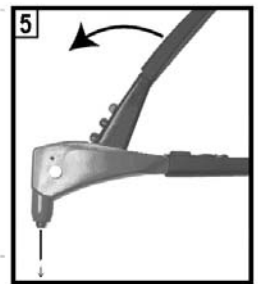
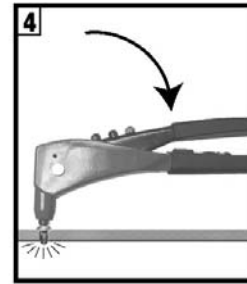
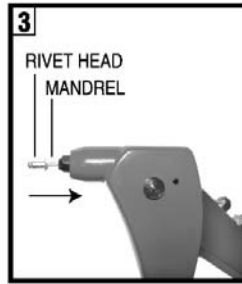
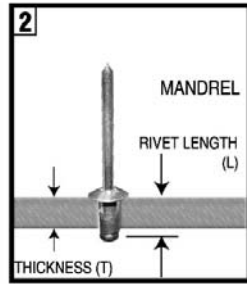
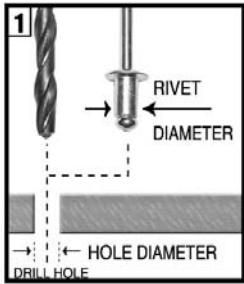




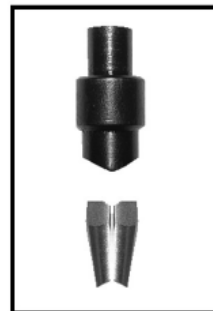
ATD-5833 Hand Riveter Instructions



1. Select appropriate rivet for application and drill same size hole through materials to be fastened.
2. Select rivet length (L) based on combined thickness (T) of materials to be fastened. It is suggested that $L - T > 0.16''$ (4.0mm)
3. Open tool handle fully and insert rivet mandrel all the way into the tool nosepiece, then insert rivet head into the prepared hole completely.
4. Squeeze tool handle until rivet mandrel breaks off. If more than one squeeze is required, open tool handle fully and squeeze again.
5. Open tool handle fully to eject rivet mandrel from tool.

HOW TO CHANGE JAWS

1. Close tool handle completely, keeping handle closed with tape or a chain.
2. Remove retaining screw with wrench then remove jaw pusher spring
3. Clean or replace jaws, oiling outside of jaws before reassemble
4. Reassembly is the reverse of above steps. Be sure that the beveled end of jaw pusher fits into bevel on the jaws.

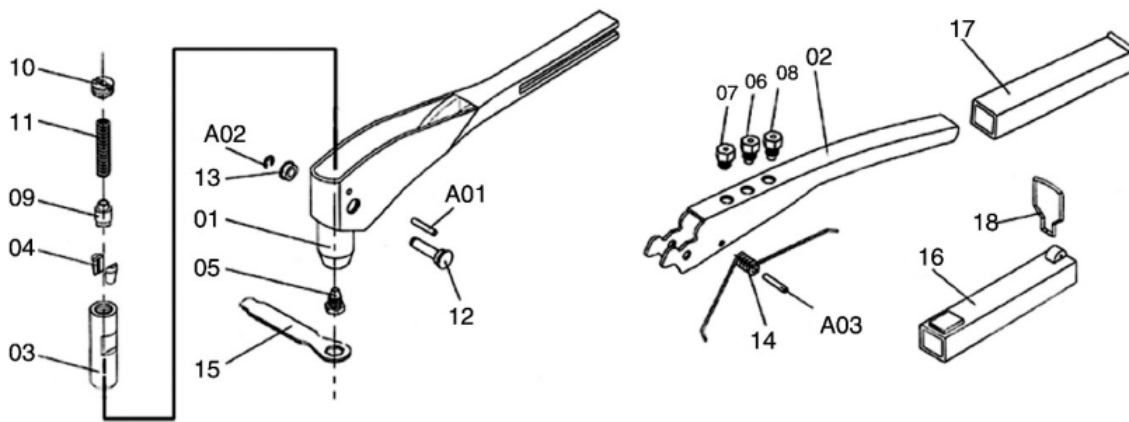


⚠ WARNING ⚠

Always wear ANSI approved safety goggles when using this product. Normal use of this product is likely to expose the user to dust and/or microscopic particles containing chemicals known to the State of California to cause cancer, birth defects or other reproductive harm. Always wear appropriate safety equipment and clothing when using this product. Study, understand, and follow all instructions provided with this product.



ATD-5833



ORDERING PART#	ITEM#	PART DESCRIPTION
PRT5833-01	01	BODY
PRT5833-02	02	HANDLE
PRT5833-03	03	JAW CARRIER
PRT5833-04	04	JAW CARRIER
PRT5833-05	05	NOSEPIECE - 3/16" (4.8 / 5.0mm)
PRT5833-06	06	NOSEPIECE - 5/32"(4.0mm)
PRT5833-07	07	NOSEPIECE - 3/32" (2.28mm)
PRT5833-08	08	NOSEPIECE - 1/8" (3.3mm)
PRT5833-09	09	PUSHER
PRT5833-10	10	SCREW
PRT5833-11	11	SPRING

ORDERING PART#	ITEM#	PART DESCRIPTION
PRT5833-12	12	CLIP PIN
PRT5833-13	13	CLIP BARREL
PRT5833-14	14	SPRING
PRT5833-15	15	WRENCH
PRT5833-16	16	PLASTIC GRIP
PRT5833-17	17	PLASTIC GRIP
PRT5833-18	18	POT HOOK
PRT5833-A01	A01	SPRING PIN
PRT5833-A02	A02	CLIP
PRT5833-A03	A03	SPRING PIN