



Ariens Company
655 W. Ryan St.
Brillion, WI 54110
www.ariens.com

Service Bulletin

Product Family: 920 Series Sno-Tek™ Snow Throwers

Subject: LCT Engine Missing Safety Shield

Dealer Action: Inspect and Correct Immediately

Model	Serial Number Range	Description
920402	000816 — 006650	Sno-Tek 24, 120V
920403	000171 — 002653	Sno-Tek 28, 120V

Ariens Company has been notified by LCT Engines (Liquid Combustion Technology) that they have identified that there is a missing safety shield on a limited number of engines used on Ariens Sno-Tek™ Sno Thros®. This condition only exists on electric start equipped winter engines with the LCT serial number range 1065HO4008325A — 1065HO4012104A.

LCT has released the enclosed Technical Service Bulletin which identifies the issue, and also explains what to do if a machine displays this defect. Please read the enclosed Bulletin, and inspect all 920402 and 920403 Sno-Tek models in your inventory per the instructions in the Bulletin.

If it is determined the proper shielding is not present, please contact LCT USA customer service at 800-552-8094 and a service kit will be provided to correct the issue.

When contacting LCT USA customer service please have the following information available: Ariens product model and serial numbers and LCT engine model and serial numbers.

Cost of kit and installation is covered by LCT. Dealers should contact LCT USA customer service at 800-552-8094 for information on any warranty claims.

Technical Service Bulletin



To: LCT Service Center

Date: 9/20/2010

LCT Model Affected: PW1HK18650781DE-ABGOQUVE1M

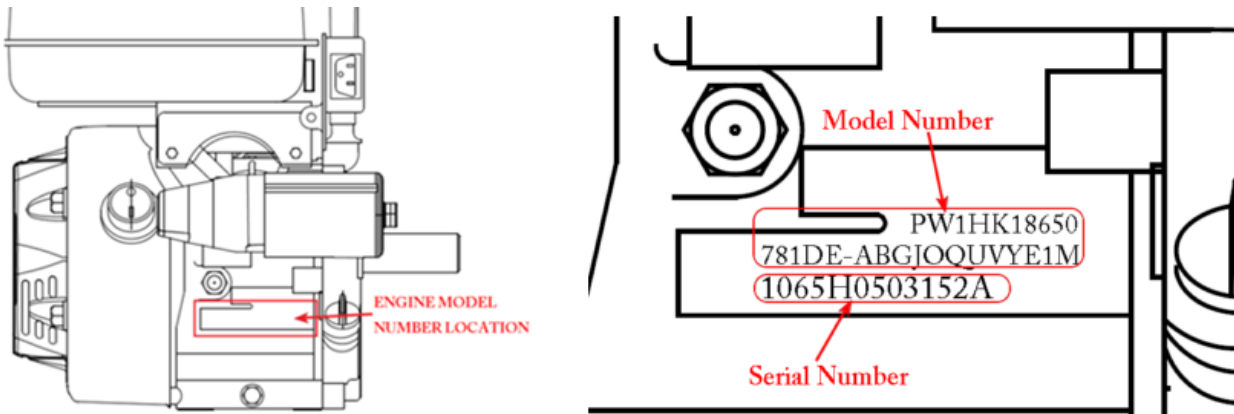
LCT Serial Range Affected: 1065H04008325A - 1065H04012104A

Ariens Sno-Tek Models: 920402 **Serial Range:** 816-868, 872, 925, 945, 951, 956, 1055, 1067, 1069, 1115, 1149, 1152, 1153, 1203, 1216, 1220, 1238, 1248, 1249, 1322, 1330, 1348, 1355, 1357, 1368, 1369, 1376, 1381, 1383-1398, 1400-1442, 1444, 1496-1499, 1501-1535, 1539, 1579, 1581, 1617-1619, 1626-1645, 1657, 1662, 1675, 1678, 1700, 1701, 1710, 1731, 1733, 1750, 1764, 1770, 1774, 1783, 1825, 1847, 1894, 1896, 1900, 1920-1922, 1930, 1934, 1942, 1989-1991, 2011, 2054, 2061, 2089, 2092, 2097, 2116, 2119, 2162, 2260, 2266, 2287, 2293, 2308, 2366, 2376, 2381, 2396, 2400, 2401, 2412, 2440, 2446, 2448, 2449, 2451, 2492-2496, 2498-2643, 2692-2701, 2753, 2773, 2796, 2802-2821, 2827, 2842-2871, 2953, 2984, 3072, 3100-3106, 3111, 3116, 3126, 3127, 3139, 3167, 3168, 3170, 3171, 3173-3175, 3194, 3196, 3198-3350, 3378, 3390-3400, 3415, 3539, 3565, 3598, 3599, 3601, 3638, 3697, 3699, 3727, 3749, 3752, 3778, 3795, 3876, 3913, 3929, 3937, 3959-4009, 4022, 4040, 4051, 4093, 4097-4099, 4101-4207, 4237-4312, 4350-4401, 4403, 4424-4440, 4475, 4496, 4521, 4543-4600, 4634-4636, 4649-4673, 4701-4737, 4749, 4768-4879, 4945, 5000-5030, 5046, 5154-5269, 5325, 5372-5496, 5611, 5618, 5629-5749, 5785, 5813-5925, 5972, 5983-6096, 6127, 6163, 6165-6234, 6262, 6266-6268, 6337, 6348, 6354-6356, 6359, 6624, 6626-6637, 6639-6650

920403 171-1043, 1062, 1066, 1073-1083, 1104-1466, 1479, 1520, 1545, 1551, 1566, 1581, 1596, 1629, 1632, 1701, 1713-1721, 1745, 1791, 1835, 1866, 1931, 1954, 2046-2050, 2052-2079, 2100-2198, 2200-2274, 2276, 2335-2354, 2400, 2421, 2487-2496, 2500-2531, 2642-2653

Dear Service Technician,

There is a possibility of a missing shield on 208cc engine model number PW1HK18650781DE-ABGOQUVE1M. This condition only exists on electric start equipped winter engines within the serial number range 1065H04008325A - 1065H04012104A.



Please see the attached inspection procedure to verify the shield in question is properly installed.

If it is determined the proper shielding is not present, please contact LCT USA customer service at 800-552-8094 and a service kit will be provided to correct the issue. We apologize for any inconvenience this may have caused. We thank you in advance for your continued patronage.

Cordially,

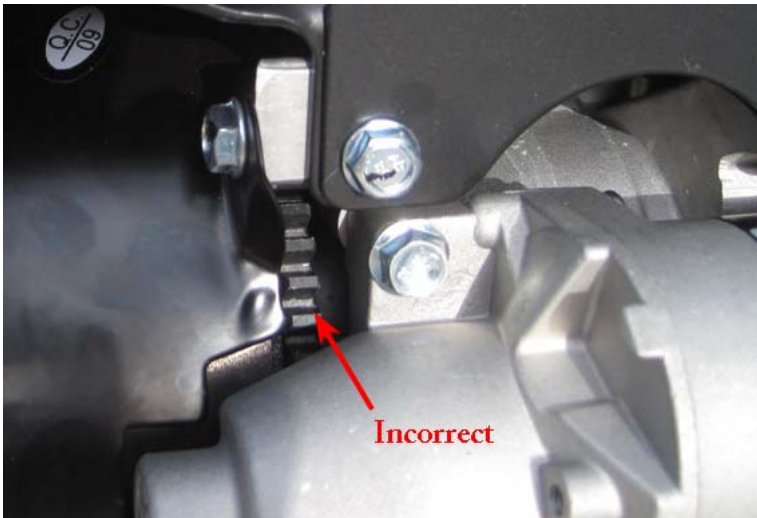
Chris Higgins
Technical Services
Liquid Combustion Technology
800-552-8094

**SHIELD INSPECTION PROCEDURE FOR LCT ENGINE MODEL NUMBER
PW1HK18650781DE-ABGOOUVE1M**

1. Visually inspect engine to verify shield is present (see picture below). If shield is present, no further action is required.



2. If it is determined the proper shielding is not present (see picture below), please contact LCT USA customer service at 800-552-8094 and a service kit will be provided to correct the issue. When contacting LCT USA customer service please have the following information available: Ariens product model and serial numbers and LCT engine model and serial numbers.

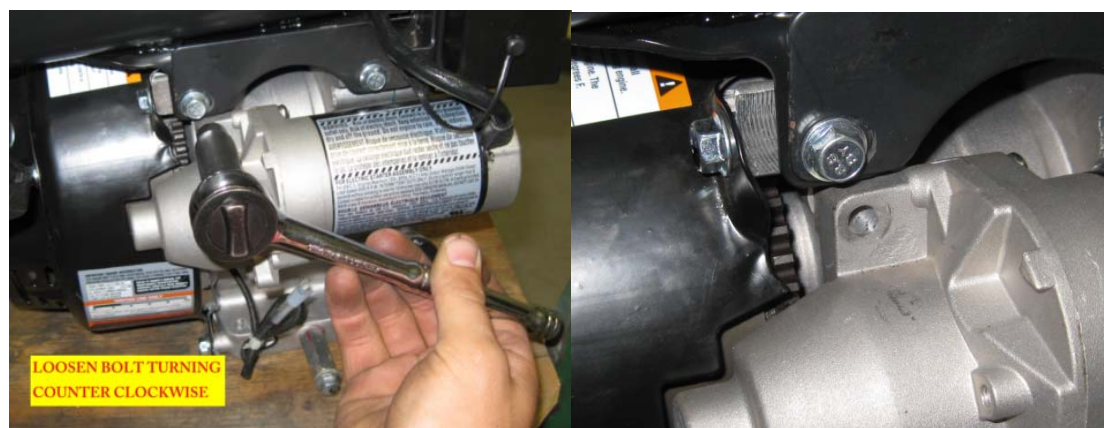


**SHIELD INSTALATION INSTRUCTIONS FOR LCT ENGINE MODEL
NUMBER PW1HK18650781DE-ABGOQUVE1M**

Tools you will need:

- Ratchet
- 10mm deep-well socket
- Ratchet extension (if deep-well socket not available)
- Torque wrench

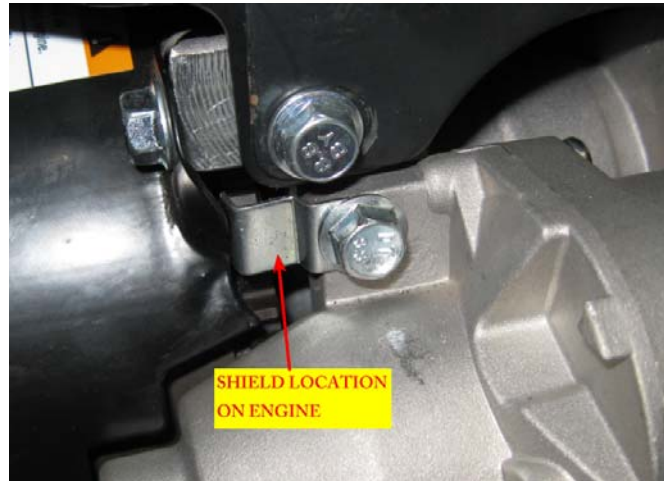
1. Remove top electric starter mounting bolt in a counter-clockwise rotation with a 10mm deep-well socket and ratchet.



2. Re-install the top electric starter mounting bolt with the supplied shield located in between mounting bolt head and starter body.



SUPPLIED
SHIELD



3. Tighten the bolt in a clockwise rotation using a torque wrench to a torque value of 10-12 n-m (86-106 in-lbs).

