



Ariens Company
655 W. Ryan St.
Brillion, WI 54110
www.ariens.com

Service Bulletin

Product Family: 917001 27-Ton Log Splitter

Subject: Wedge Mounting Hardware Replacement

Dealer Action: Install New Mounting Bolts

Model	Serial Number Range	Description
917001	000101 – 000611; 000622; 001004 – 001005; 001027; 001058; 001073; 001090; 001092 – 001096; 001098; 001113 – 001114; 001134; 001153; 001170	27-Ton Log Splitter

The Ariens Company has learned that the splitting wedge mounting bolts on the model 917001 27-Ton Log Splitter may fail under extreme loads. Replacing the two existing .38-16 hex bolts closest to the cylinder with two .50-13 x 2 Grade 8 hex bolts (p/n 05970700), two .563 x 1.38 x .109 flat steel washers (p/n 06442000), and two .50-13 center lock nuts (p/n 06536300) reduces the potential for failure under such loads.

Before putting into service any 917001 27-Ton Log Splitter in the above-listed serial number ranges, replace the two .38-16 hex bolts closest to the cylinder as indicated in the illustration on page two with two .50-13 x 2 Grade 8 hex bolts (p/n 05970700), two .563 x 1.38 x .109 flat steel washers (p/n 06442000), and two .50-13 center lock nuts (p/n 06536300). For units in these serial number ranges already sold to end users, contact the customer and replace the hardware at the customer's earliest convenience.

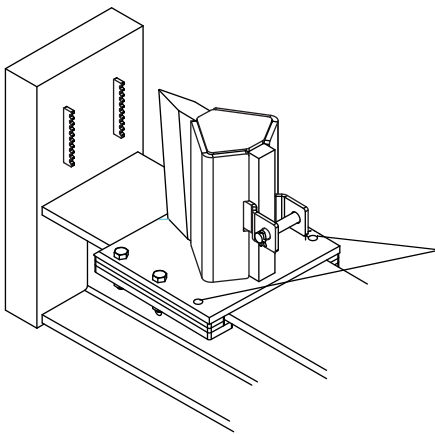
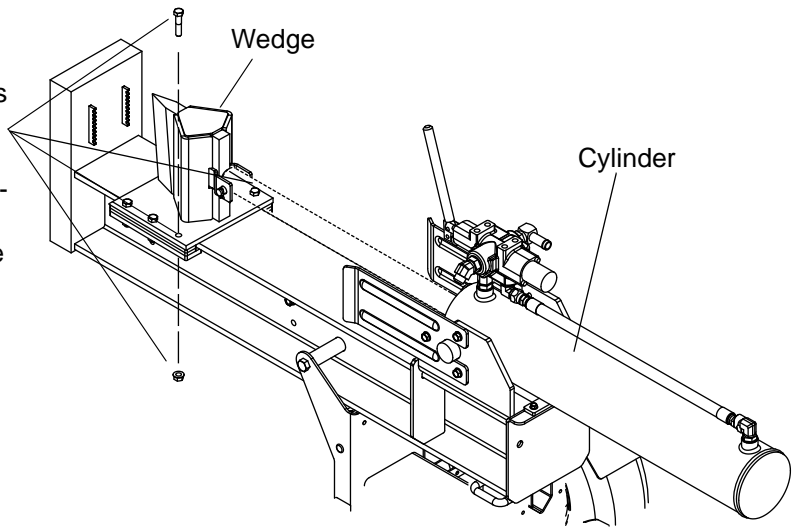
Only the units in the serial numbers listed above need to have hardware replaced. All other units will have had this change made before shipping from Ariens.

Dealers should file a warranty claim for each log splitter they service, using flat rate code 17900. Dealers will be reimbursed for 0.25 hours of labor at their standard posted shop labor rate.

Refer to the illustration on page 2 for hardware location and installation instructions.

Remove and discard the two 3/8 bolts and top locking flange nuts closest to the cylinder.

NOTE: Stroke the cylinder slightly forward to get access to the bolts. Shut down the log splitter after stroking the cylinder. **DO NOT** replace the bolts while the unit is running.



Use a 1/2" drill bit to bore out the mounting holes closest to the cylinder.

Install .50-13 x 2 Grade 8 hex bolt (p/n 05970700), .563 x 1.38 x .109 flat steel washer (p/n 06442000), and .50-13 center lock nut (p/n 06536300). Tighten to 50 lbf-ft (67.8 N•m).

.50-13 x 2 Grade 8 hex bolt (p/n 05970700)

.563 x 1.38 x .109 flat steel washer (p/n 06442000)

.50-13 center lock nut (p/n 06536300)

