

# American Standard

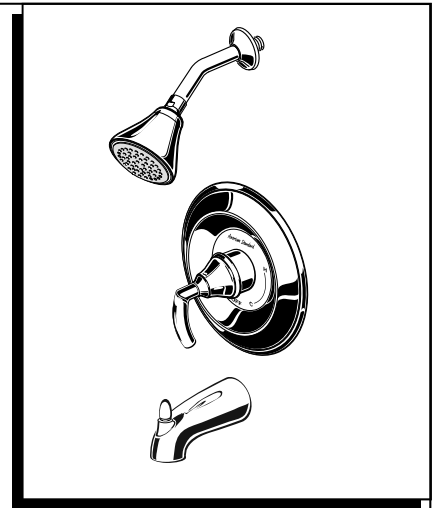
## Installation Instructions 7031

### TRIUMPH ANTI-SCALD TUB AND SHOWER SETS

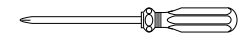
Thank you for selecting American-Standard...the benchmark of fine quality for over 100 years.

To ensure that your installation proceeds smoothly--please read these instructions carefully before you begin.

Certified to comply with ANSI A112.18.1  
M968856 Rev. 1.2



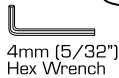
#### Recommended Tools



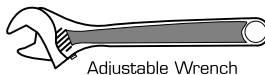
Phillips Screwdriver



Tubing Cutter



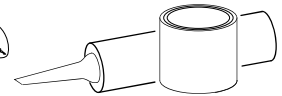
4mm (5/32")  
Hex Wrench



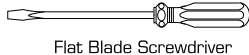
Adjustable Wrench



Channel Locks



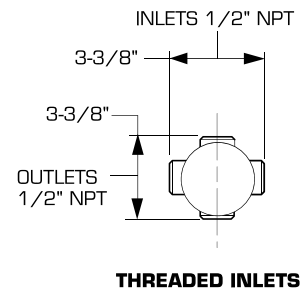
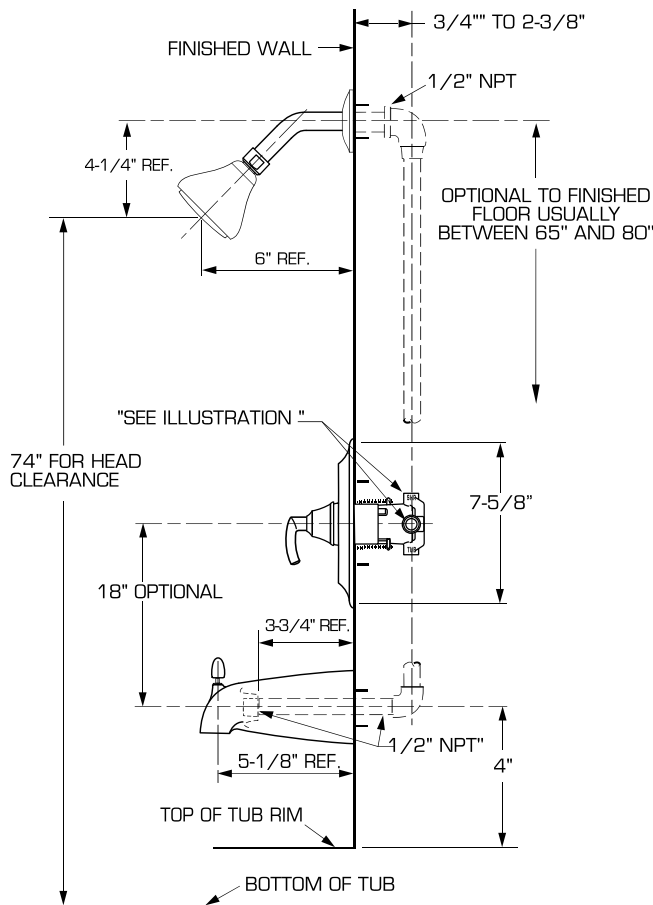
Plumbers' Putty or Caulking



Flat Blade Screwdriver

#### ROUGHING-IN DIMENSIONS

- To assure proper positioning in relation to wall, note roughing-in dimensions.

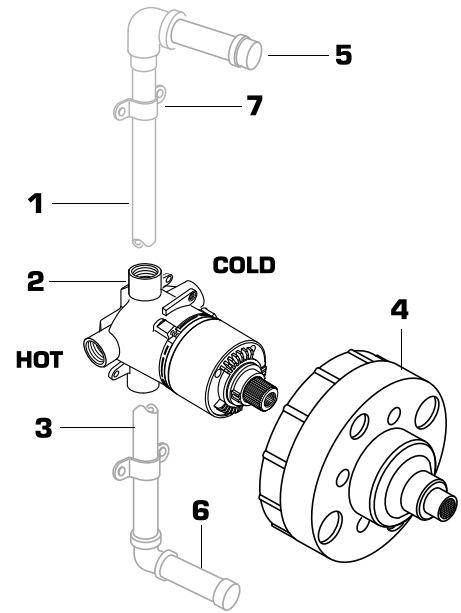


# 1 ROUGHING-IN

**CAUTION** Turn off water at main supply.

**NOTE** When soldering, remove **PLASTER GUARD, CARTRIDGES** and **CHECK STOPS (IF PRESENT)**. When finished soldering, flush valve body, replace cartridges, check stops (if present) and plaster guard to continue installation. Use thread sealant or Teflon tape on threaded connections.

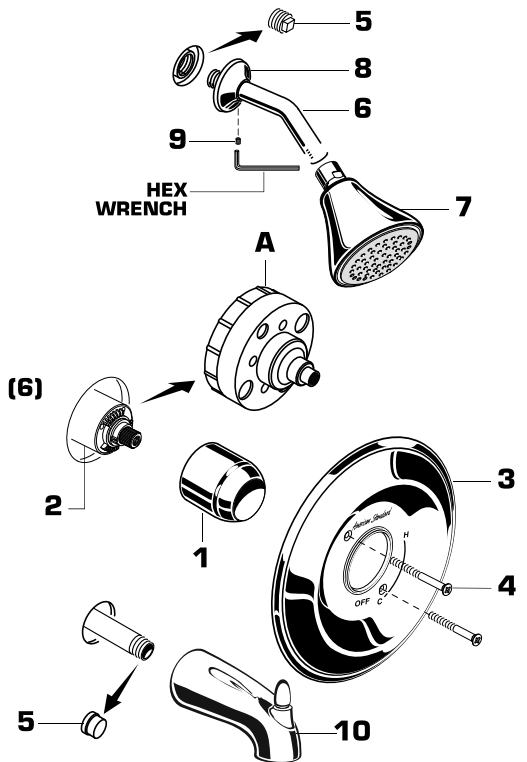
- See Roughing-in diagram before starting.  
Connections are:
  - 1/2" female NPT for threaded inlets.
- Connect **RISER PIPE (1)** to **MANIFOLD (2)** top outlet marked "SHR".
- Connect **TUB FILLER PIPE (3)** at bottom outlet marked "TUB".
- For proper positioning the finished wall must be within side wall of **PLASTER GUARD (4)**.
- If the valve is installed on a fiberglass or other thin wall application, the **PLASTER GUARD (4)** can be used as a support.
  - Cut a 3" dia. hole in the shower stall.
  - Drill two additional 1" holes to allow access to the stops.
  - Remove **PLASTER GUARD (4)**, rotate 90° so that indicated screw holes fit **MANIFOLD (2)**.
  - Push **CAP** on valve, place **ESCUTCHEON** on and attach with screws.
- Connect hot and cold water supplies.
- Cap off shower pipe **(5)** and tub filler pipe **(6)**.
- For support, use pipe **BRACES (7)** secured to wooden braces.
- With valve turned off, turn on water supplies. Check for leaks



# 2 INSTALL TRIM

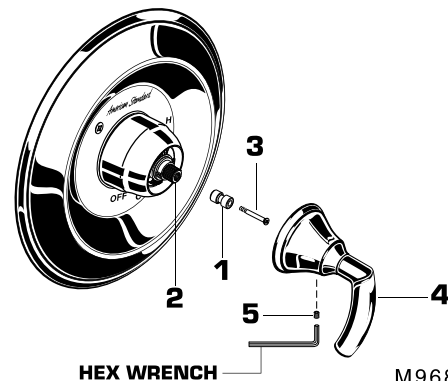
**CAUTION: Protect finish on SHOWER ARM, SHOWER HEAD and TUB SPOUT when installing.**

- When finished tiling the wall, remove **PLASTER GUARD (A)** and turn off water supply.
- Push **CAP (1)** over **VALVE CARTRIDGE (2)**.
- Mount **ESCUTCHEON (3)** and gasket to valve body with **SCREWS (4)**.
- Remove **PIPE CAP & PLUG (5)** from shower pipe and tub filler pipe.
- Apply Teflon Tape to both ends of **SHOWER ARM (6)**. Install **SHOWER ARM (6)** with **FLANGE (8)** into shower pipe and tighten.
- Thread **SHOWER HEAD (7)** onto **ARM (6)** and tighten.
- Push **SHOWER ARM FLANGE (8)** to wall and tighten **SET SCREW (9)** with 5/64" hex wrench.
- Apply Teflon Tape to spout filler pipe and install **DIVERTER SPOUT (10)**.



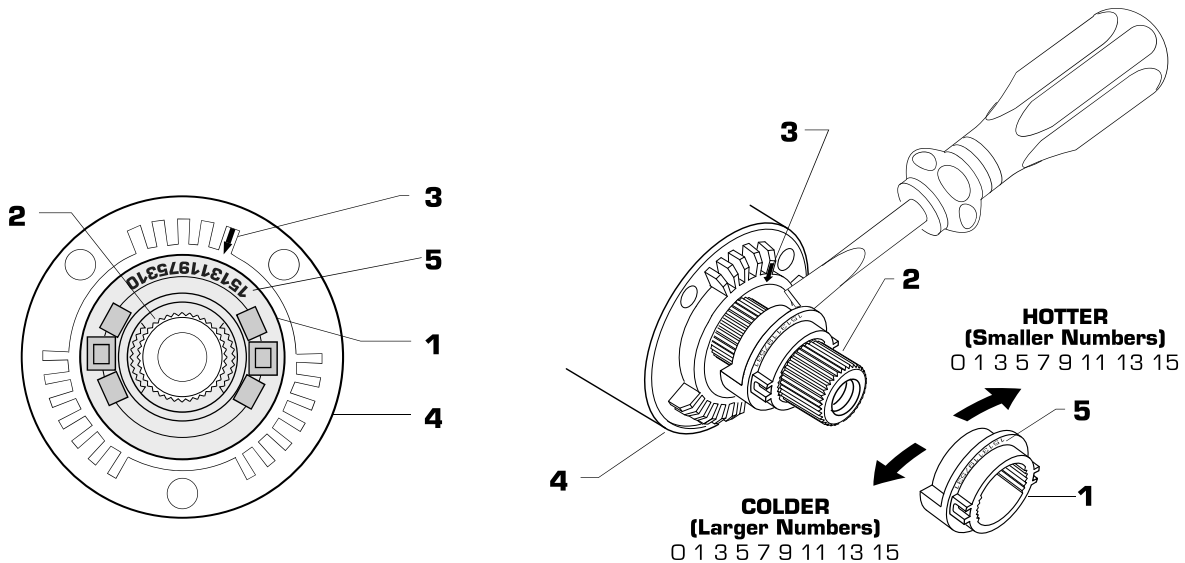
# 3 INSTALL HANDLE and TEST FITTING

- Install **ADAPTER (1)** onto **VALVE STEM (2)** using **SCREW (3)**.
- Align and install **HANDLE (4)** and tighten with **SET SCREW (5)** using 2.5mm Hex Wrench supplied.
- Check proper operation of **HANDLE (4)**.
- Turn on water supply on and test installed fitting. Operate valve and diverter spout.



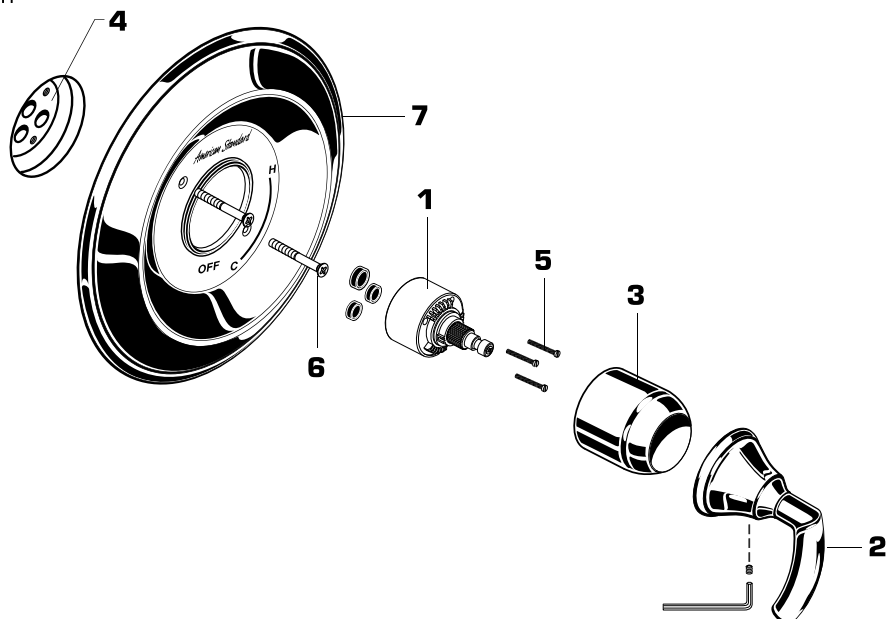
## 4 ADJUST HOT LIMIT STOP

- By restricting HANDLE rotation and limiting the amount of hot water allowed to mix with the cold, the HOT LIMIT SAFETY STOP **(1)** reduces risk of accidental scalding. To set the maximum hot water temperature of your faucet, all you need to do is adjust the setting on the HOT LIMIT SAFETY STOP **(1)**.
- Turn CARTRIDGE STEM **(2)** to the OFF position (coldest setting) before making adjustment to HOT LIMIT SAFETY STOP **(1)**. Use a flat blade screwdriver to pry free the HOT LIMIT SAFETY STOP **(1)**. Pull forward and rotate counterclockwise one number to limit hot water temperature. Use ARROW **(3)** on CARTRIDGE **(4)** and NUMBERS **(5)** on HOT LIMIT SAFETY STOP **(1)** for indication.



## 5 SERVICE

- If faucet drips, operate handle several times from "off" to "on". Do not apply excessive force.
- Clogged CARTRIDGE **(1)** inlets may cause reduced flow in "full on" hot or cold. To clean inlets, first turn off water supply, then:
  - Remove HANDLE **(2)**.
  - Remove two SCREWS **(6)** holding ESCUTCHEON **(7)** and remove ESCUTCHEON **(7)**.
  - Remove CAP **(3)**, SCREWS **(5)** and CARTRIDGE **(1)**. Clean inlets and MANIFOLD **(4)**.
  - Reassemble CARTRIDGE **(1)**, alternately tightening SCREWS **(5)**.
  - Replace CAP **(3)** and HANDLE **(2)**. Check flow.



# 5a

## SERVICE: VALVE LEAKS WHEN SHUT OFF

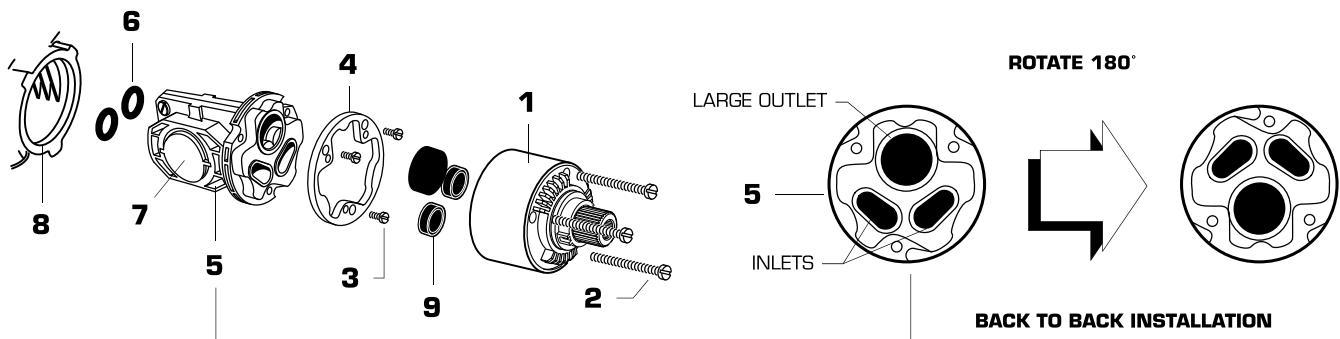
- Remove handle and trim, refer to step 5
- Remove CARTRIDGE (1) by removing CARTRIDGE SCREWS (2). Remove three SCREWS (3) from FIXATION RING (4) and pull out PRESSURE BALANCING (5) unit.
- Clean SEALS (9) on base of CARTRIDGE (1). Check base of PRESSURE BALANCING UNIT (5) and clean O-RINGS (6). Remove CAPS (7) and check O-RINGS on inside of CAPS (7). Clean inside sealing surfaces of VALVE BODY (8).
- Re-assemble PRESSURE BALANCING UNIT (5) and CARTRIDGE (1). Tighten all screws.
- Turn on water supply and see above for installing TRIM and HANDLE.

### UNABLE TO MAINTAIN CONSTANT TEMPERATURE

- Remove PRESSURE BALANCE UNIT (5).
- Remove CAPS (7) and clean valve thoroughly.
- Examine balancing unit and check condition of O-ring on end of piston. Piston should move back and forth. Order Repair Part M952100-0070A if balancing unit is defective.
- Replace CAPS (7) and install PRESSURE BALANCE UNIT (5). Make sure inlets line up with two holes in bottom of casting. Top flange should butt-up against top of casting.

### BACK TO BACK INSTALLATION

- Remove PRESSURE BALANCE UNIT (5). Rotate PRESSURE BALANCE UNIT (5) 180° so that the inlets face up and the large outlet port faces down.
- Push PRESSURE BALANCE UNIT (5) in casting make sure inlets line up with holes in bottom of casting. Top flange should butt up against top of casting.
- Reassemble FIXATION RING (4) and CARTRIDGE (1).



# 6

## CARE INSTRUCTIONS:

**DO: SIMPLY RINSE THE PRODUCT CLEAN WITH CLEAR WATER. DRY WITH A SOFT COTTON FLANNEL CLOTH.**

**DO NOT: DO NOT CLEAN THE PRODUCT WITH SOAPS, ACID, POLISH, ABRASIVES, HARSH CLEANERS, OR A CLOTH WITH A COARSE SURFACE.**

*American Standard*

**TRIUMPH**  
**ANTI-SCALD IN-WALL**  
**PRESSURE BALANCING**  
**TUB AND SHOWER**

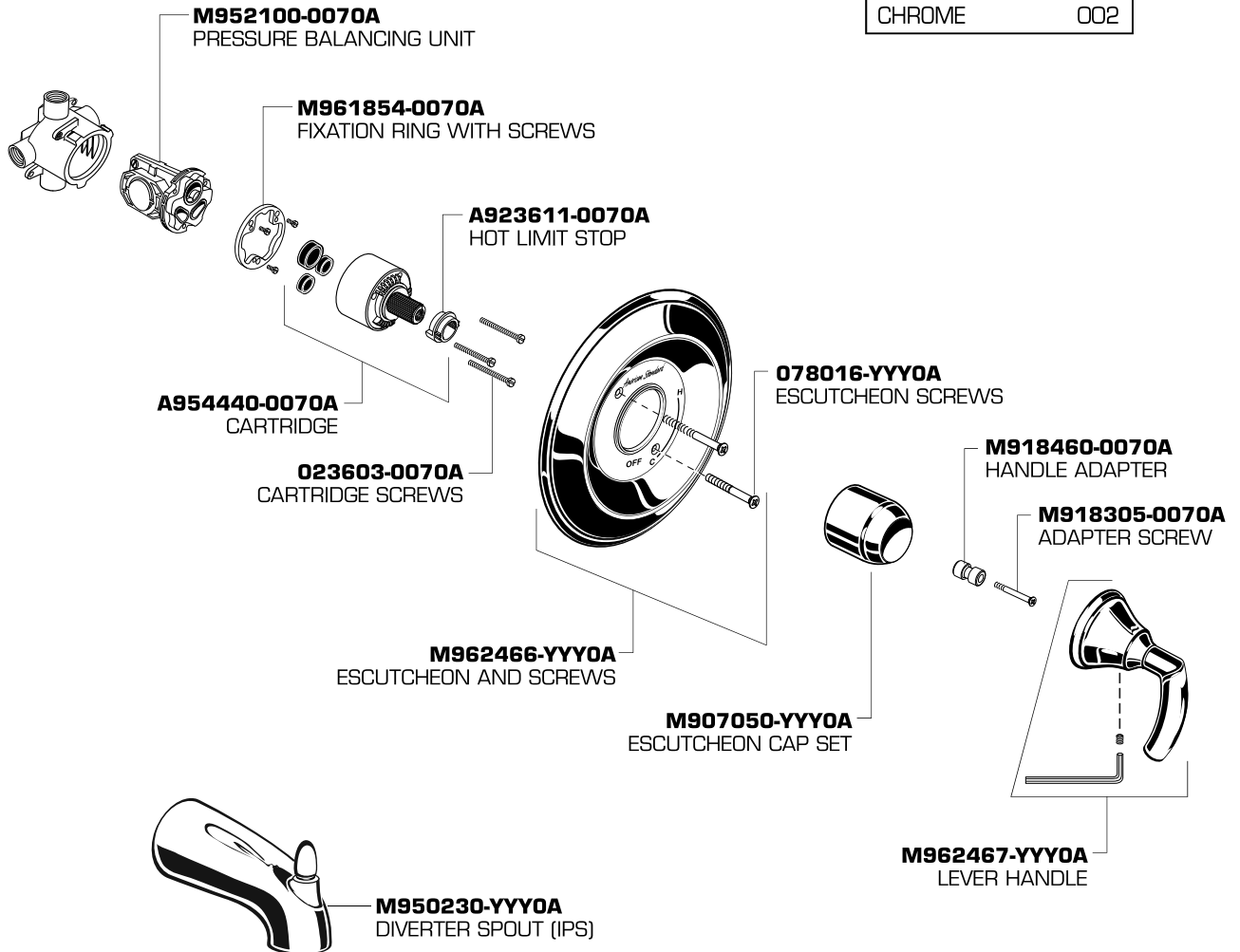
**MODEL NUMBER**

**7031**



Replace the "YYY" with appropriate finish code

CHROME	002
--------	-----



HOT LINE FOR HELP  
 For toll-free information and answers to your questions, call:  
 1 (800) 442-1902  
 Weekdays 8:00 a.m. to 6:00 p.m. EST  
 IN MEXICO 01-800-839-12-00  
 IN CANADA 1-800-387-0369 (TORONTO 1-905-306-1093)  
 Weekdays 8:00 a.m. to 7:00 p.m. EST

Product names listed herein are trademarks of American Standard Inc.  
 © American Standard Inc. 2006