



Technical Documentation

# **WASHING MACHINE**

*SW5L 70D*

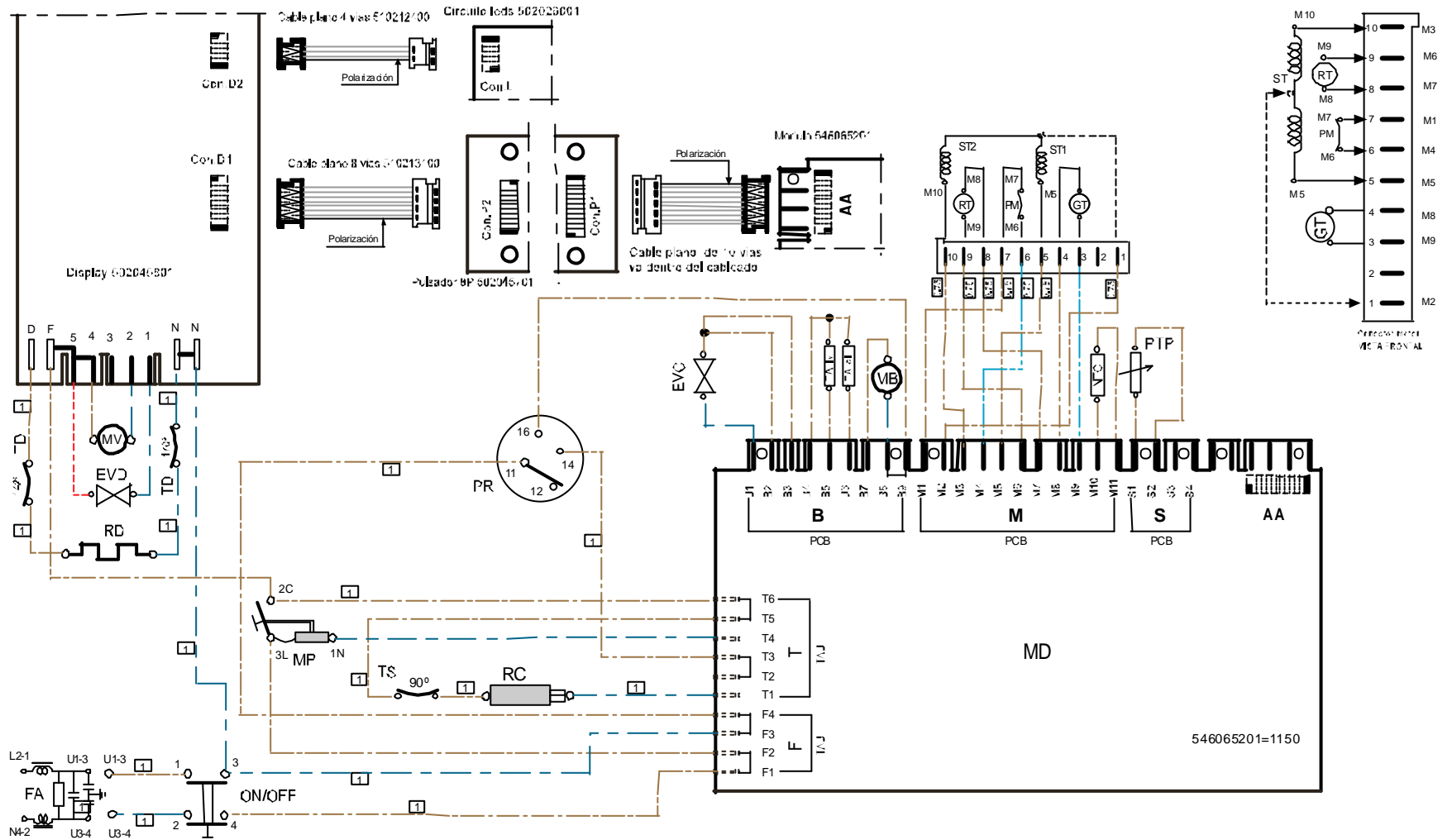
Nº : 014596005 / 996051000

MODEL : EdgeStar SW5L 70D

Velocidad de centrifugado	Máx. Spin speed	Máx. tours	<b>1200 R.p.m.</b>
Tipo de motor	Motor type	Type du Moteur	<b>Universal</b>
Módulo	Module	Module	<b>Electronico</b>
Programas	Programm	Programm	<b>Potenciometro</b>
Voltage / Frecuencia	Voltage and Hertz	Voltege et Hertz	<b>220/230 V. - 50 Hz.</b>
Potencia maxima	Maximum absorbed power	Puissance maximum absorbé	<b>2200 W.</b>
Potencia resist. Calent.	Heating element power	Résistance de chauffage	<b>2050 W.</b>
Fusible	Protective fuse	Thermo fusible	<b>10 A.</b>
Capacidad del tambor	Drum capacity	Capacité du tambour	<b>47 L.</b>
Capacidad de lavado	Wash capacity	Capacité de charge	<b>5,5Kg.</b>
Capacidad de secado	Drying capacity	Capacité d' éssorage	<b>2,75Kg.</b>
Nº de compartimientos jabonera	Nº detergent compartments	Nombre de bac à lessive	<b>4 Ud.</b>
Nº de programas	Numbers of programmes	Nombre de programmes	<b>19+1</b>
Paro / marcha	On / Off.	Marche / arrêt	<b>X</b>
Paro cuba llena	Stop H2o	Arret cuve pleine	<b>X</b>
Super aclarado	Extra rinse	Rinçage supplémentaire	<b>X</b>
Prelavado	Prewash	Pré - lavage	<b>X</b>
Programa plus	Intensive	Energique	<b>X</b>
Antiarrugas	Wash & wear	Antifroissage	<b>X</b>
Pulsador RPM	Push buton Spin	Touche Tours	<b>X</b>
Tiempo de espera	Waiting timer	Départ différé	<b>X</b>
Arranque	Start	Départ	<b>X</b>
Secado	Dry	Sechage	<b>X</b>
Lavado 60° + Secado	Wash 60° + Dry	Lavage 60° + Sechage	<b>140 min.105+105</b>
Consumo energía	Energy consumption	Consommation d' énergie	<b>1,03 Kwh.1,9+1,9</b>
Consumo de agua	Water consumption	Consommation d'eau	<b>49 L.48+48</b>
Eficiencia de centrifugado	Spin efficiency	Efficaté d'essorage	<b>53 % H.R.</b>
Clase eficiencia energética	Energy efficiency class	Classe énergétique	<b>C</b>
Clase eficiencia lavado	Wash efficiency index	Classe de lavage	<b>A</b>
Clase eficiencia centrifugado	Spin efficiency class	Classe d'essorage	
Peso lavadora embalada	Gross weight packed	Poids brut emballé	<b>84 Kg.</b>
Peso lavadora sin embalage	Net weight unpacked	Poids net sans emballage	<b>82,5 Kg.</b>
Alto, ancho, fondo embalada	Height, Width, Depth packed	Heuteur - Largeur - Profondeur emb.	<b>90 X 65 X 58 cm.</b>
Alto, ancho, fondo sin embalar	Height - Width - Depth unpacked	Heuteur - Largeur - Profondeur sans	<b>85 X 60 X 55 cm.</b>

# 460613360

SWSL 70D  
3013700

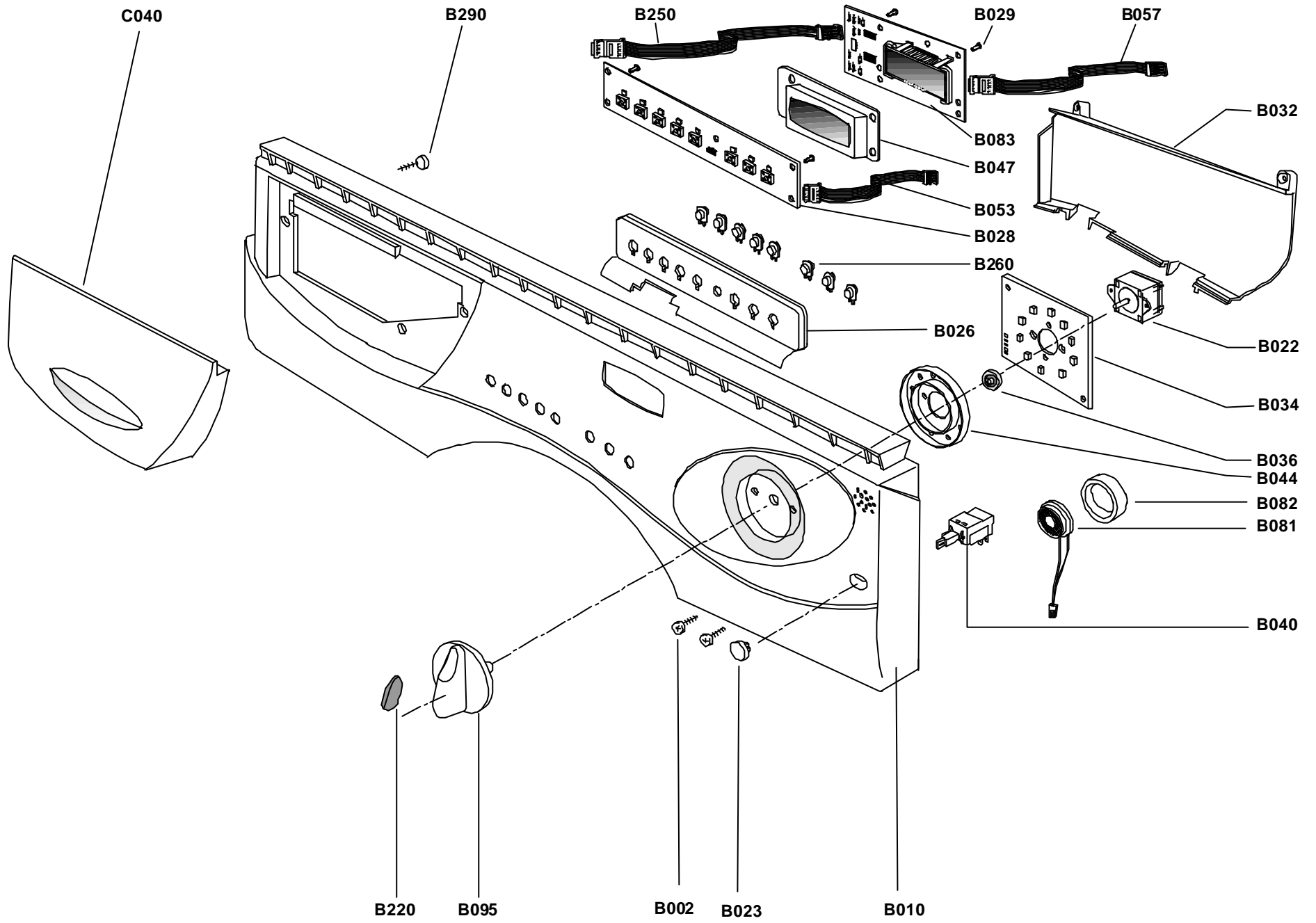


Q/N/OFF	Pulsador paro / marcha	On / off push button	Touche marche / arret
MD	Modulo ele tronico	Control unit	Module
EVC	Electrovalvula fria	Cold valve	Electrovanne froid
MB	Mo to bomba	Drain pump	Motopompe
RT	Motor centrifuga	Spin motor	Moteur essorage
MV	Motor ventilador	Dry fan motor	Moteur ventilateur
MP	Micro puerta	Door lock	Micro porte
G	Generador tacometrico	Tachomet. generator	Generateur tachometrique
RI	Motor centrifuga	Spin motor	Moteur essorage
EVD	Electrovalvula Dry	Dry valve	Electrovanne dry

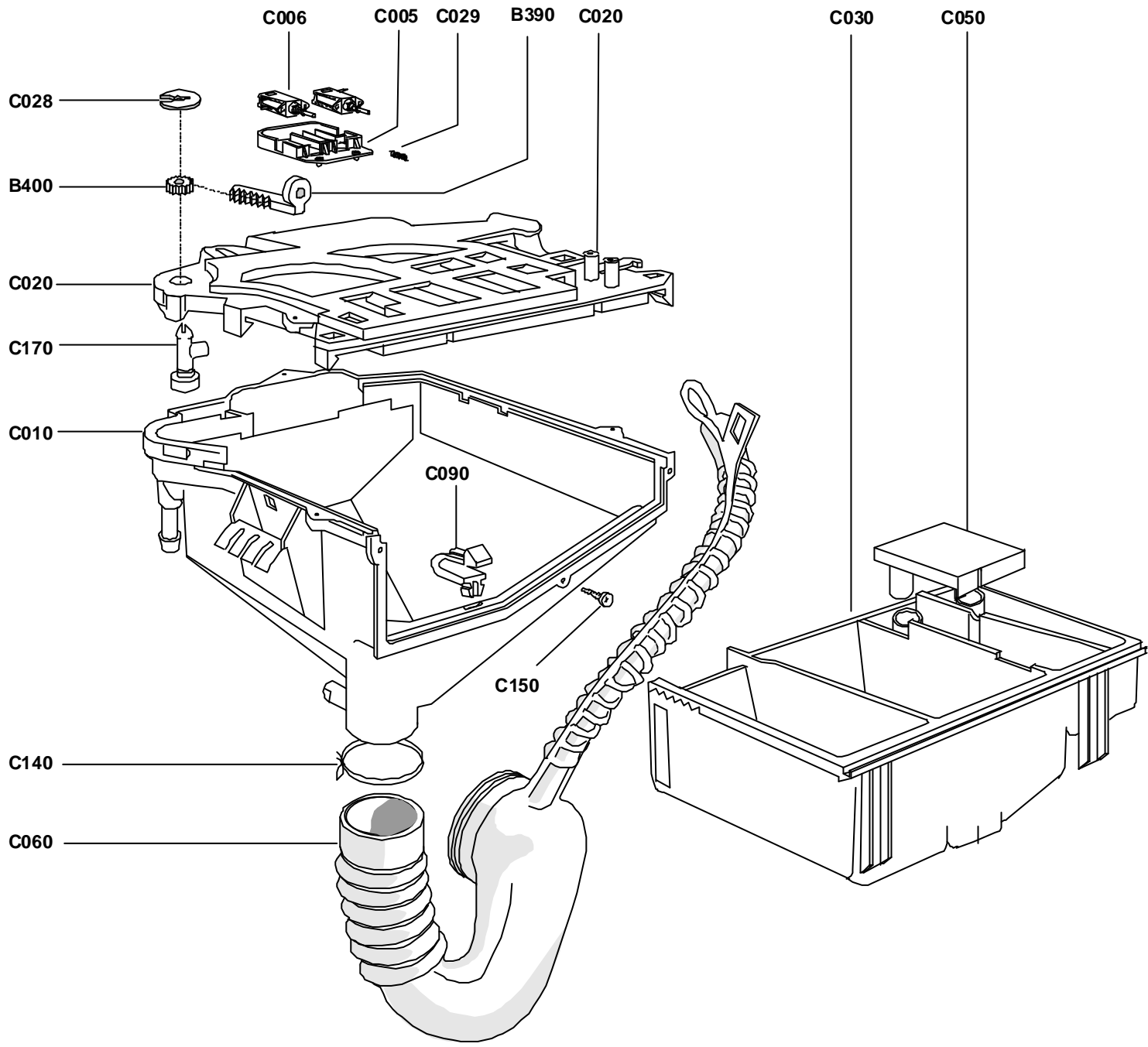
PR	Presostab	Pressure switch
FM	Protector térmico motor	Thermic protector motor
RC	Resistencia calentamiento	Heating element
TS90	Termostato fijo 90°	Klixon 90°
FA	Filtro línea	Interference filter
NTC	Termoresistencia NTC	Cold wash push-button
P1°C	Potenciometro °C	Potentiometer °C
ST	Motor stator	Klixon 142°
T3142	Termostato DRY 142°	Klixon 170°
T3170	Termostato DRY 170°	Drying Heating element
RD	Resistencia Dry	

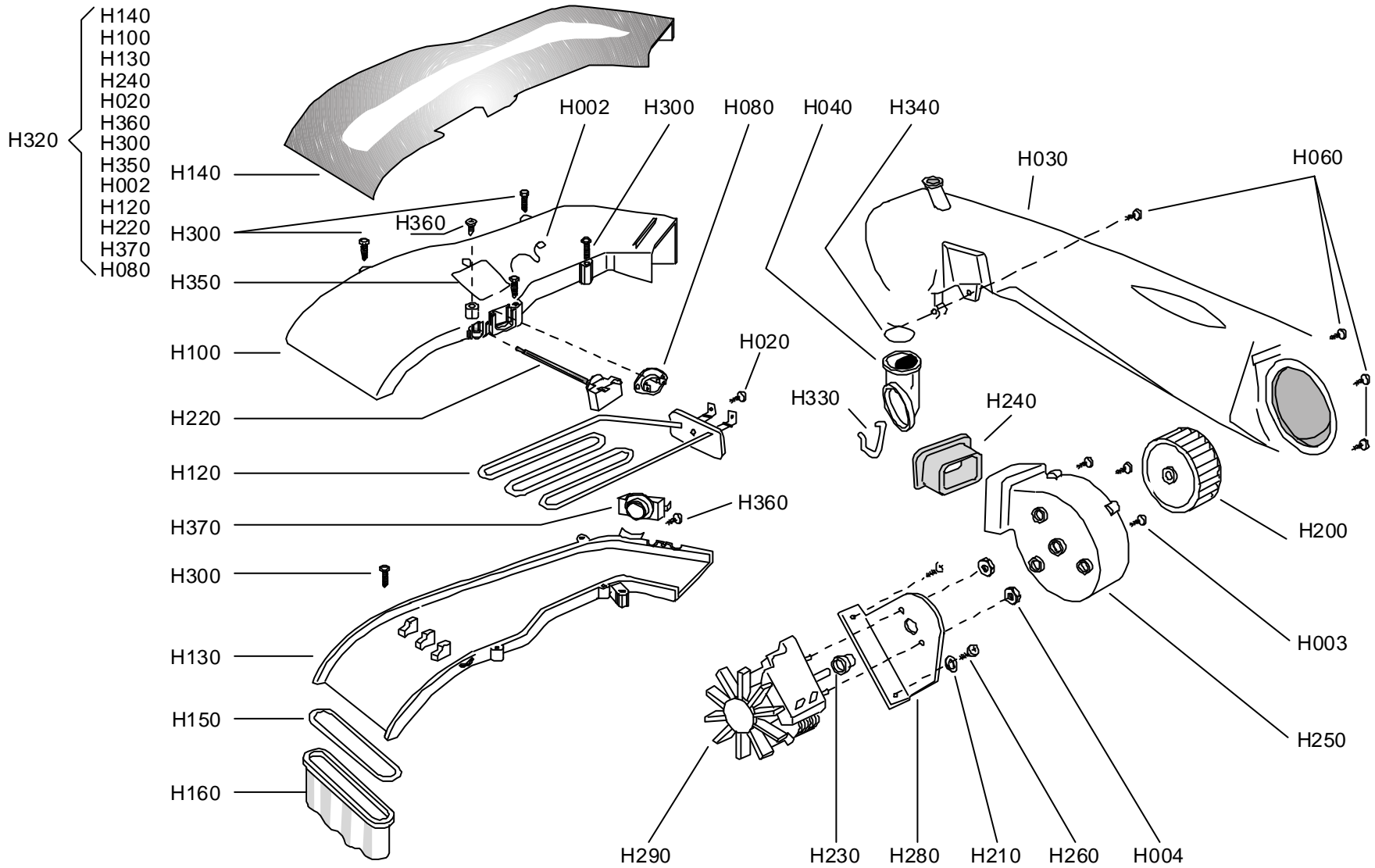
Pressostat	Proteccion térmica motor	Proteccion thermique moteur
Resistencia chauffage	Termostato 90°	Termostate 90°
Termostato 90°	Filtre antiparasitaire	Filtre antiparasitaire
Termostato 142°	Termoresistencia	Termoresistance
Termostato 170°	Thermostat temperature °C	Thermostat temperature °C
Resistence dry	Moteur stator	Moteur stator
	Thermostat 142°	Thermostat 142°
	Thermostat 170°	Thermostat 170°

999044408



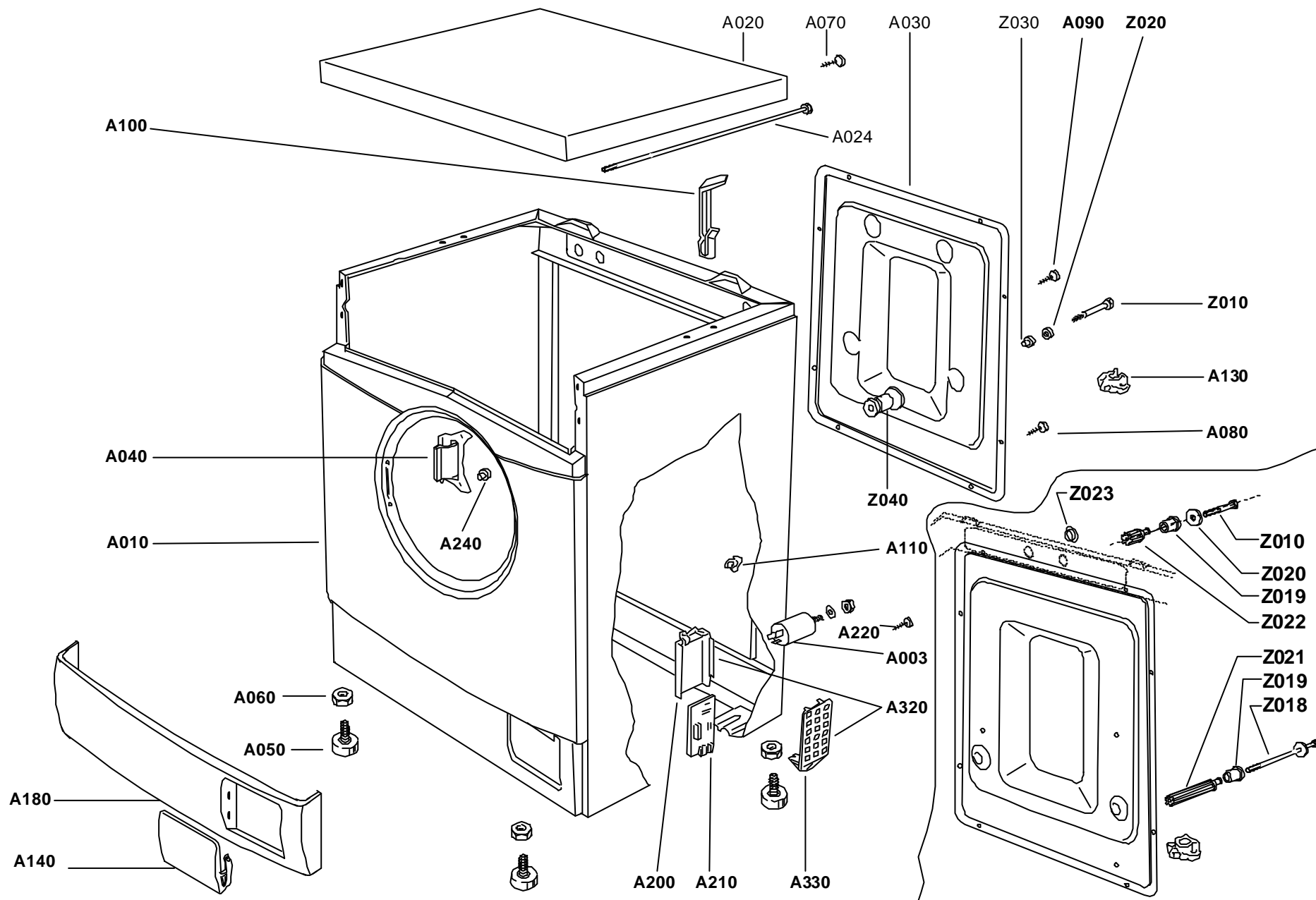
999031009



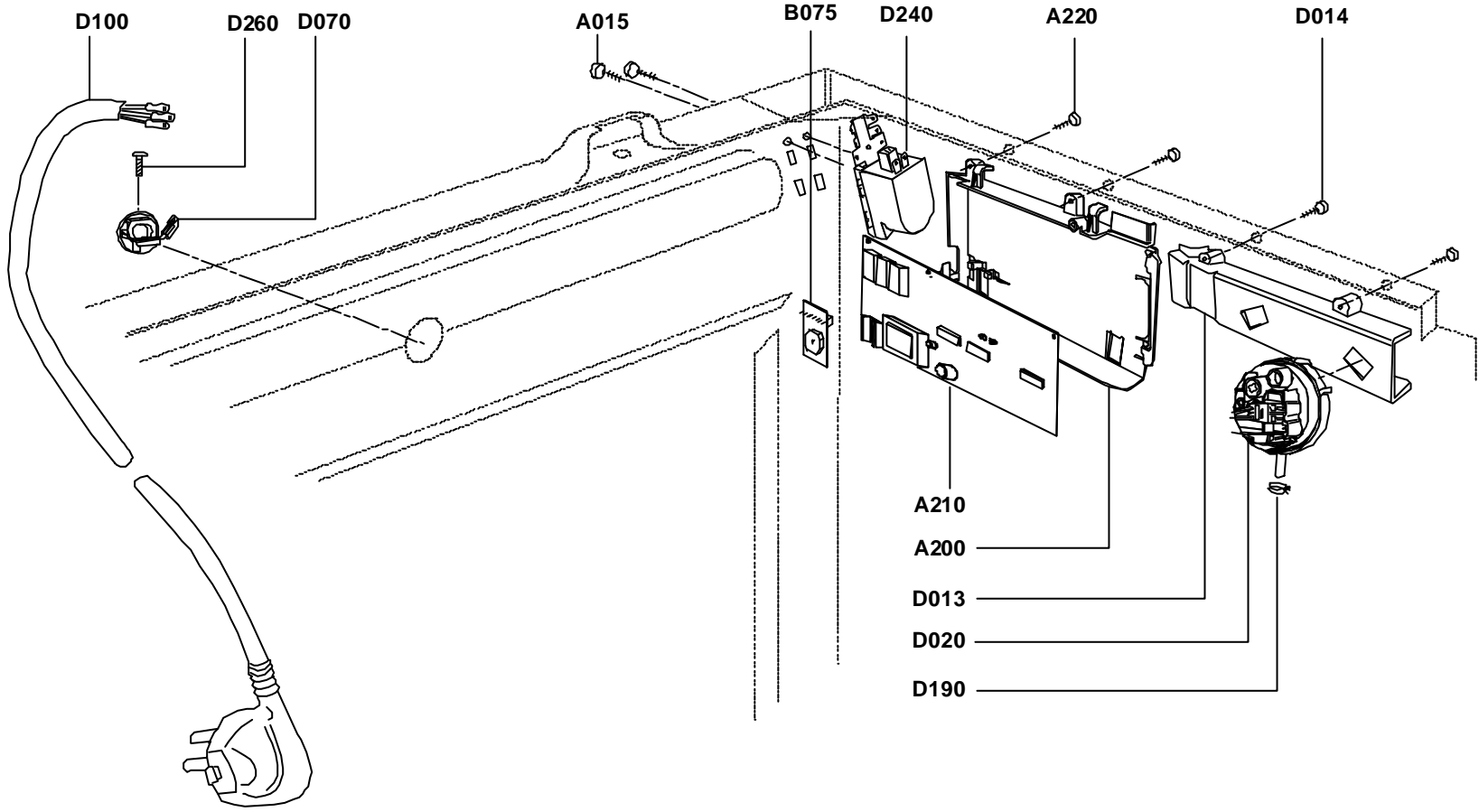


999024150

999024109

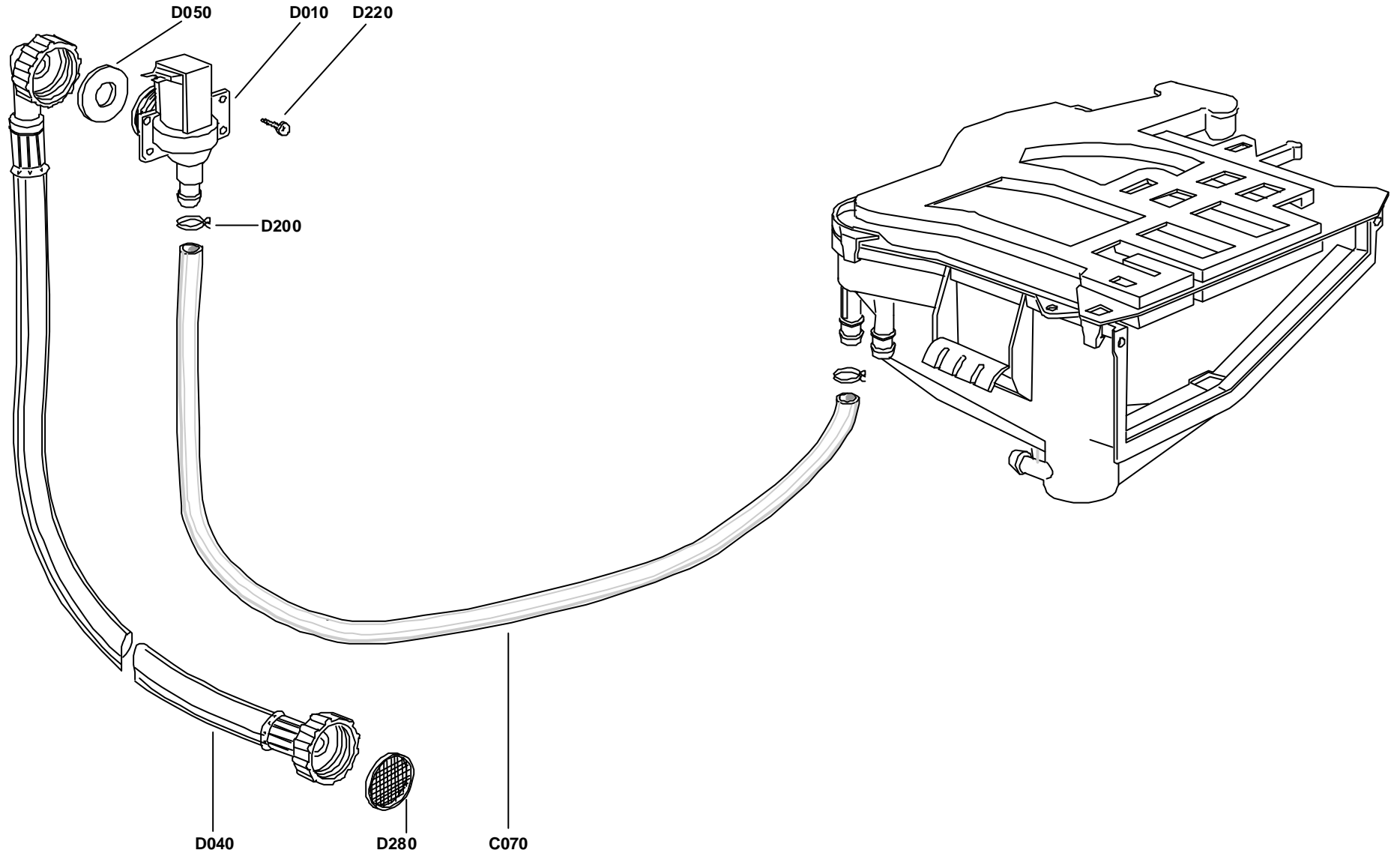


999031010

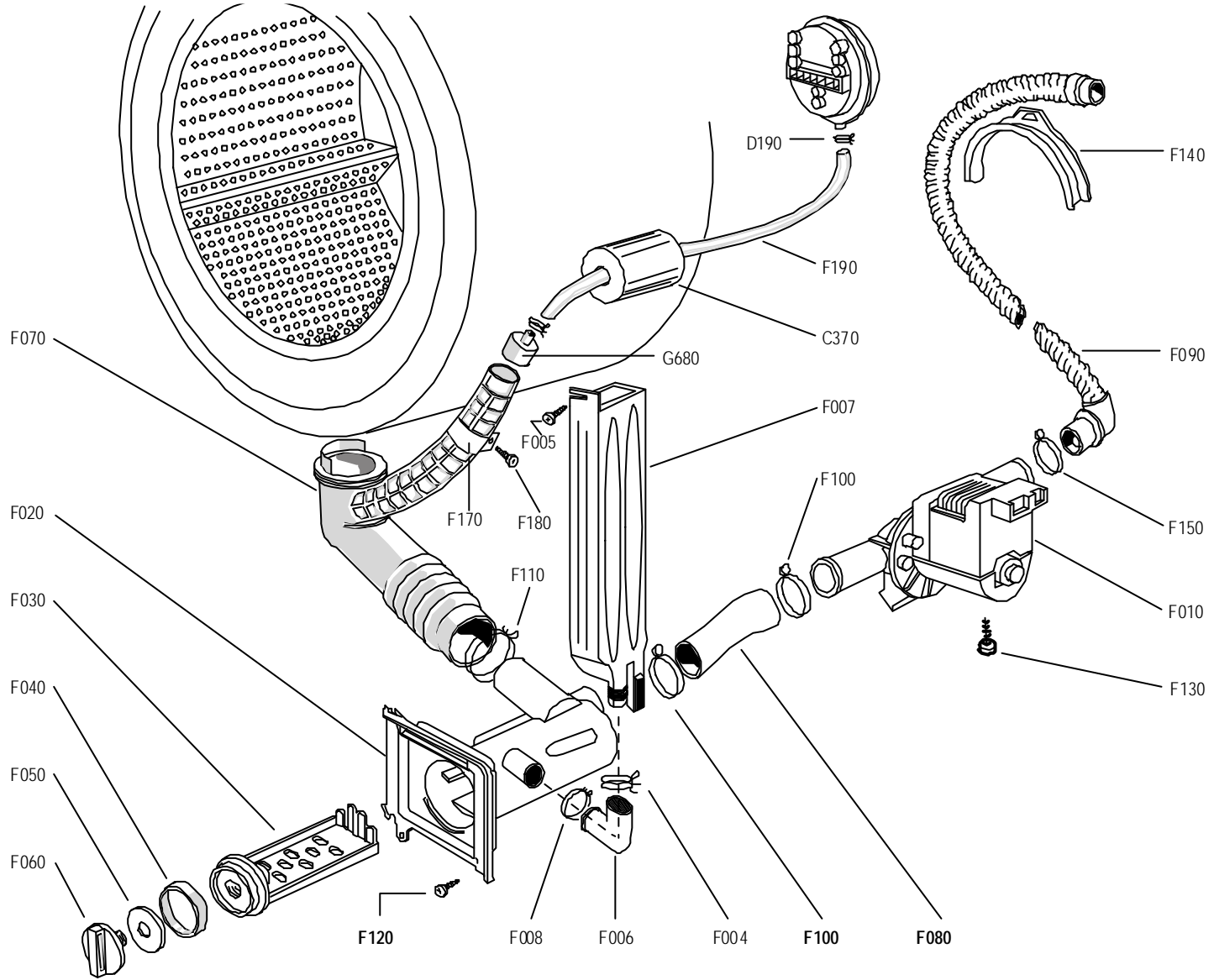


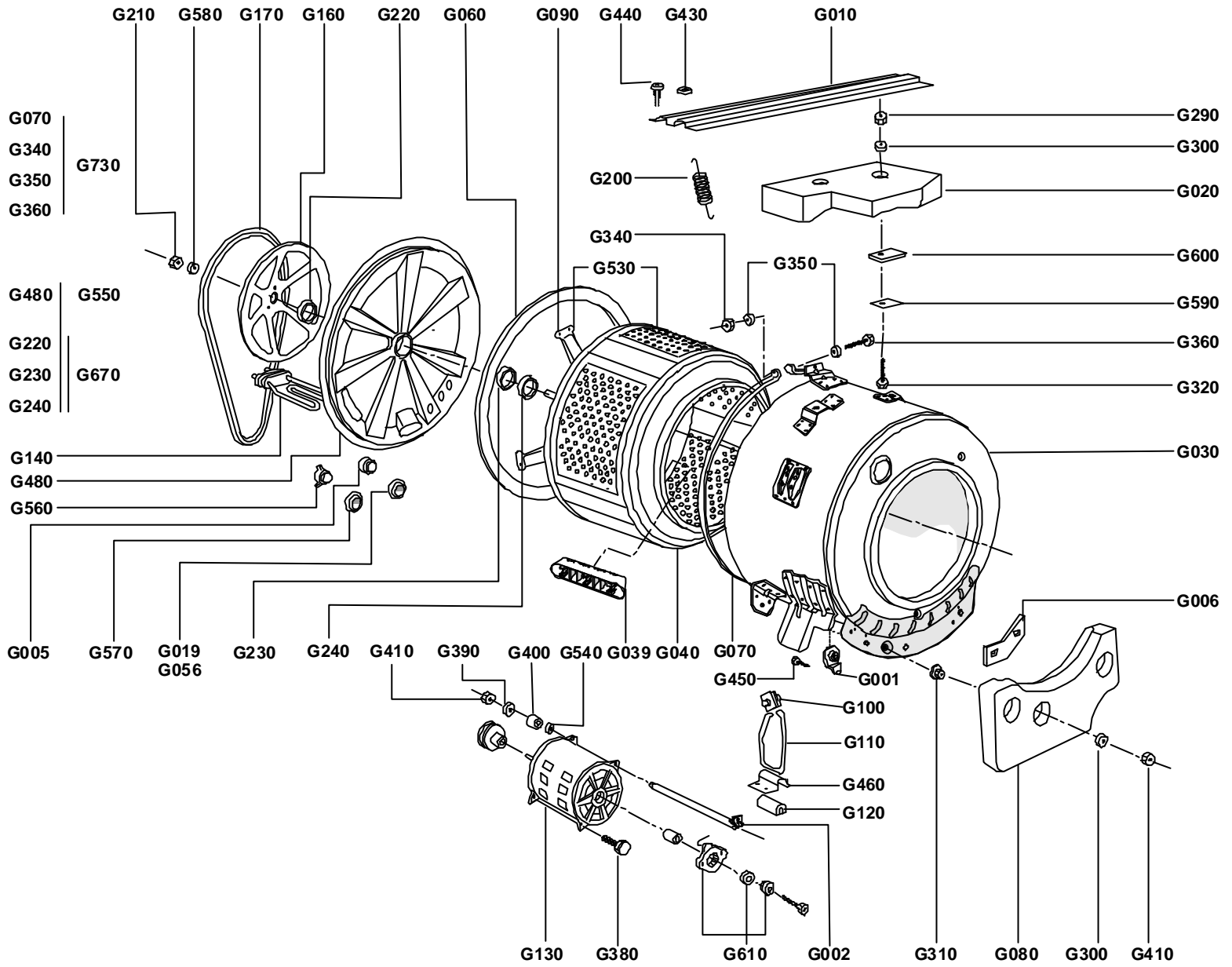


999023146

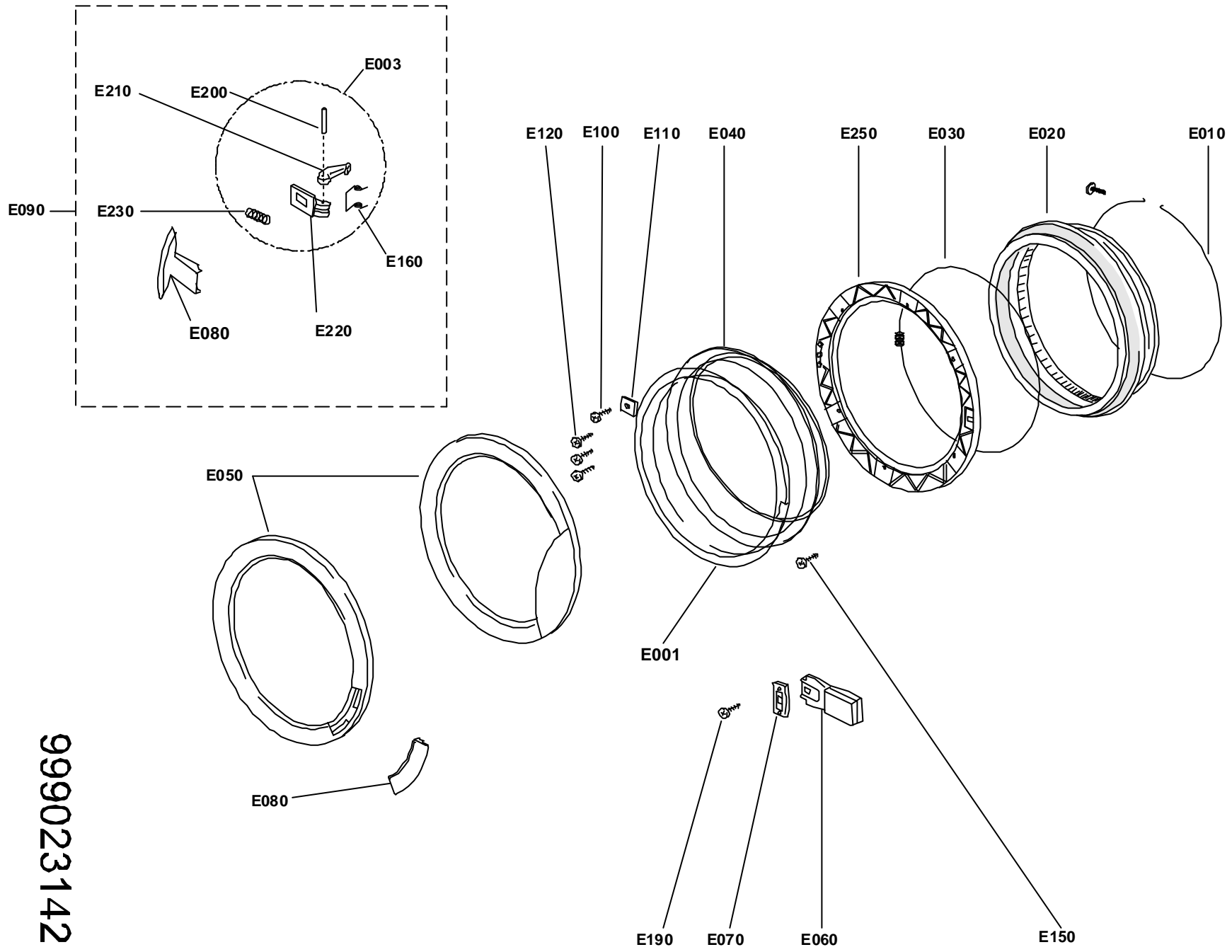


999024148





999031011



999023142

## EdgeStar SW5L 70D

Model: SW5L70D N.Ref.: 996051000 NIF: A08115800

EDGESTAR SW5L70D

Code Esp.	N.Ref.	Item Description	Quantity Of Pieces	Expiry Date	Unit Price
CFA010	D710045901	CABINET	1		68
CFA015	D432004600	NOISE FILTER FIXING SCREW	2		1
CFA020	D721079400	UPPER TOP	1		20
CFA030	D276018800	REAR TOP	1		13
CFA040	D246021700	HINGE	1		10
CFA050	D720149300	LEVELLING FOOT	4	01.04.2005	4
CFA050	D720330200	LEVELLING FOOT	4		3
CFA070	D432004900	SCREW FOR UPPER TOP	2		1
CFA080	D432004600	SCREW FOR REAR TOP	8		1
CFA100	D398143100	HOOK FOR WIRING SUPPORT	1		3
CFA110	D398026100	HOOK FOR WIRING SUPPORT	1		2
CFA110	D398106100	HOOK FOR WIRING SUPPORT	2		1
CFA110	D398106200	HOOK FOR WIRING SUPPORT	3		1
CFA130	D398105400	DRAIN SUPPLY HOSE CLAMP	1		2
CFA130	D398105500	DRAIN SUPPLY HOSE CLAMP	2		2
CFA140	D398140900	FILTER COVER	1		3
CFA180	D366010400	BASE	1		12
CFA200	D368023100	CARD HOLDER BOX	1		7
CFA210	D546074400	ELECTRONIC MODULE	1		31
CFA220	D432009400	CARD HOLDER BOX FIXING SCREW	2		1
CFA240	D438003300	DOOR HINGE RIVET	4		1
CFA320	D720310100	MODULE HOLDER BOX UNIT	1		10
CFB002	D432017100	FIXING SCREWS FOR POTENTIOMETER	2		1
CFB010	D804659685	FRONT TRIM	1		20
CFB022	D502016600	PROGRAMME SELECTOR	1		10
CFB023	D332047100	ON-OFF BUTTON	1		2
CFB026	D402044400	ELASTOMER GASKET FOR BUTTONS	1		1
CFB028	D502045701	ELECTRONIC BUTTON PCB	1		1
CFB029	D432026000	PCB FIXING SREW	9		1
CFB032	D352012000	ELECTRIC PARTS PROTECTION	1		7
CFB033	D432003900	ELECTRICAL PARTS PROTECTION FIXING SCREW	2		1
CFB034	D502039400	LED PCB	1		13
CFB036	D402027300	POTENTIOMETER GASKET	1		2
CFB040	D522005000	PUSH BUTTON SWITCH	1		7
CFB044	D368023700	PROGRAMME LED DIFFUSION BOX	1		4
CFB047	D328075700	DISPLAY	1		3
CFB053	D510213100	FLAT CABLE FOR FRONT PANEL PCB CONNECTIO	1		1
CFB057	D510212400	FLAT CABLE FOR LED PCB-BUTTON CIRCUIT BO	1		1
CFB083	D502045801	DISPLAY PCB	1		53
CFB095	D326149700	POTENTIOMETER TIMER KNOB	1		2
CFB190	D402008800	ADJUSTABLE THERMOSTAT GASKET	2		2
CFB220	D336009800	THERMOSTAT/TIMER KNOB INSERT	1		2
CFB260	D332065200	PUSHBUTTON	8	01.03.2005	2
CFB260	D332065300	PUSHBUTTON	8		2
CFB290	D432004600	FRONT TRIM FIXING SCREWS	4		1
CFB390	D398163400	SLIDER TOOTHED ROD	1		2
CFB400	D398163500	THERMOSTAT SLIDER PINION	1		2
CFC005	D354026900	THERMO-ACTUATOR BOX	1		7
CFC006	D502017400	THERMO-ACTUATORS	2		7
CFC008	D440003300	TANK-CONVEYOR HOSE CLAMP	1		2
CFC010	D728012200	DETERGENT BOX COMPARTMENT	1		10
CFC020	D330098000	DETERGENT COMPARTMENT COVER	1		10
CFC028	D398163600	DISCO TANCA ENGRANATGE PER DISTRIBUIDOR	1		2
CFC029	D444018800	MUELLE LEVA REENVIO CFE47 1V	1		2
CFC030	D398104600	DETERGENT DRAWER	1		10
CFC040	D806300000	DETERGENT DRAWER HANDLE	1		12
CFC050	D330062800	BLEACHING COMPARTMENT SHELF	1		3
CFC060	D402009400	DETERGENT SUPPLY PIPE COUPLING	1		10
CFC090	D444001800	DRAWER SPRING	1		3
CFC120	D432016900	SCREW FOR DETERGENT COMPARTMENT COVER	1		1
CFC130	D440000200	SUPPLY HOSE CLAMP	2		2
CFC140	D440000600	HOSE CLAMP FOR DETERGENT LOADING BELLOWS	1		2
CFC150	D432008800	SCREW FOR DETERGENT COMPARTMENT	4		1
CFC170	D398163700	DISPENSER	1		3

Code Esp.	N.Ref.	Item Description	Quantity Of Pieces	Expiry Date	Unit Price
CFC370	D407005400	PIPE PROTECTION SPONGE	2		1
CFD008	D398211300	DOUBLE ELECTRO-VALVE PIPE CONNECTION	1		1
CFD012	D398211400	TRANSFER FEED PIPE	1		1
CFD020	D520008000	PRESSURE CUT-OFF SWITCH	1		10
CFD021	D398213800	WATER RECIRCULATION PIPE COUPLING	1		1
CFD040	D408003900	WATER SUPPLY HOSE	1		10
CFD050	D402009100	SUPPLY PIPE GASKET	1		2
CFD070	D398025800	CABLE CLAMP	1		4
CFD100	D508000105	SUPPLY CABLE	1		48
CFD200	D440000200	ELECTROVALVE CLAMP E	3		2
CFD210	D432004600	PRESSURE CUT-OFF SWITCH-BRACKET SCREW	1		1
CFD210	D432016800	PRESSURE CUT-OFF SWITCH-BRACKET SCREW	1		1
CFD220	D430015500	SCREW FOR ELECTROVALVE	2		1
CFD240	D532003700	ANTIDISTURBANCE FILTER	1		20
CFD260	D432003700	CABLE CLAMP SCREW	1		1
CFD430	D534010400	DOUBLE ELECTROVALVE	1		10
CFE001	D398094900	DISC FOR DOOR PROTECTION	1		7
CFE010	D441006200	RING CLAMP WITH SCREW FOR DOOR GASKET	1		5
CFE020	D404001200	DOOR GASKET	1		26
CFE030	D441019600	SAFETY RING FOR DOOR GASKET	1		2
CFE040	D493001600	DOOR GLASS	1		26
CFE050	D338000105	OUTER DOOR FRAME	1		20
CFE050	D338000111	OUTER DOOR FRAME	1		36
CFE060	D530001500	MICROSWITCH OR DOOR BLOCK	1		12
CFE080	D324003642	DOOR HANDLE	1		3
CFE090	D719007503	DOOR HANDLE UNIT	1		10
CFE100	D432003400	SCREW FOR DOOR GLASS INSERT	6		1
CFE110	D266006300	DOOR GLASS INSERT	6		2
CFE120	D432026700	SCREW FOR DOOR HINGE	3	01.04.2005	1
CFE120	D432034000	SCREW FOR DOOR HINGE	3		1
CFE150	D432025700	DOOR CATCHRETURN SPRING SCREW	2		1
CFE160	D444008500	DOOR CATCH RETURN SPRING	1		2
CFE190	D432009400	SCREW FOR DOOR CATCH PLATE	2		1
CFE200	D443012200	DOOR HANDLE PIN	1		1
CFE210	D398178900	DOOR HANDLE CATCH	1		2
CFE230	D444016200	SAFETY SPRING FOR DOOR HANDLE	1		2
CFE250	D344002100	DOOR SUBFRAME	1		12
CFF004	D440003200	NON-OVERFLOW COUPLING TUBE CLAMPS	1		2
CFF005	D432004600	NON-OVERFLOW HOSE FIXING SCREWS	1		1
CFF006	D402013700	COUPLING TUBE NON-OVERFLOW-FILTER CASING	1		5
CFF007	D356002600	NON-OVERFLOW HOSE	1		10
CFF008	D440000400	COUPLING FILTER CASING CLAMPS	1		2
CFF010	D518003901	ELECTROPUMP	1		26
CFF020	D398243900	FILTER BODY	1		7
CFF030	D398019200	FILTER DRAWER	1		7
CFF040	D402004100	FILTER GASKET	1		2
CFF050	D441018400	FILTER RING	1		2
CFF060	D350003500	FILTER CAP	1		3
CFF070	D402038600	DRAIN OUTLET BEND	1		10
CFF080	D398013000	FILTER-PUMP CONNECTION	1		4
CFF090	D414004300	DRAIN PIPE	1		12
CFF100	D440000500	HOSE CLAMP CONNECTION FOR FILTER-PUMP	2		2
CFF110	D440001700	HOSE CLAMP FOR DRAIN OUTLET BEND	1		2
CFF120	D432008700	FILTER BODY SCREW	2		1
CFF130	D432009800	ELECTROPUMP SCREW	2		1
CFF140	D398019400	U BOLT FOR DRAIN PIPE BEND	1		5
CFF150	D440000400	DRAIN PIPE HOSE CLAMP	1		2
CFF190	D414013900	PRESSURE SWITCH PIPE	1		2
CFF190	D720334800	PRESSURE SWITCH PIPE	1		2
CFG001	D441028500	MOTOR FIXING SPLIT PIN	1		2
CFG002	D443013200	MOTOR FIXING PIN	1		4
CFG005	D526011900	THERMO-RESISTANCE	1	28.04.2005	10
CFG005	D526011900	THERMO-RESISTANCE	1	01.01.2005	10
CFG005	D526011900	THERMO-RESISTANCE	1		10
CFG010	D258002100	SPRING HOOK CROSSPIECE	1		7
CFG020	D490000700	UPPER COUNTERWEIGHT	1		7
CFG030	D726011400	TUB	1		63
CFG037	D432016700	MOTOR PIN FIXING SCREW	1		1

Code Esp.	N.Ref.	Item Description	Quantity Of Pieces	Expiry Date	Unit Price
CFG039	D398101400	DRUM PADDLE	4		7
CFG060	D402004300	TUB GASKET	1		10
CFG070	D441016900	LOCKING-RING FOR TUB	1		12
CFG080	D490008200	BOTTON COUNTERWEIGHT	1		12
CFG090	D236012300	DRUM FLANGE	1		50
CFG100	D499004900	FRICTION PADS	4		4
CFG110	D444000600	DAMPER SPRING	2		7
CFG120	D441009700	DAMPER BUSH	2		2
CFG130	D512018200	MOTOR	1		69
CFG140	D524018100	HEATING ELEMENT	1		13
CFG160	D268087100	PULLEY PIPING	1		10
CFG170	D416002800	BELT	1		10
CFG200	D444017600	SUSPENSION SPRING FOR TUB	1		3
CFG200	D444018700	SUSPENSION SPRING FOR TUB	1		3
CFG210	D434000300	PULLEY NUT	1		1
CFG220	D446000200	BEARING	1		10
CFG230	D446000300	BEARING	1		12
CFG240	D441017500	SEALING RING	1		5
CFG290	D434002100	NUT COUNTERWEIGHT	5		1
CFG300	D436008500	COUNTERWEIGHT WASHER	5		1
CFG300	D436013600	COUNTERWEIGHT WASHER	5	10.05.2005	1
CFG310	D398105200	BOSS COUNTERWEIGHT	3		1
CFG320	D430007100	SCREW FOR UPPER COUNTERWEIGHT	1		1
CFG320	D430007600	SCREW FOR UPPER COUNTERWEIGHT	1		1
CFG340	D434002100	TUB RING NUT	1		1
CFG350	D436000500	TUB RING WASHER	1		1
CFG360	D430025600	TUB LOCKING-RING SCREW	1		1
CFG380	D430014000	MOTOR SCREW	1		1
CFG400	D441022600	MOTOR BUSH	3	01.04.2005	2
CFG400	D441031400	MOTOR BUSH	3		2
CFG410	D434002100	MOTOR NUT	1		1
CFG430	D499003600	SPRING FIXING RING	2		3
CFG440	D432004600	SPRING CROSS PIECE SCREW	4		1
CFG450	D430018800	LOWER COUNTERWEIGHT SCREW	3		1
CFG460	D268003500	DAMPER CONNECTING PLATE	2		3
CFG480	D716008900	TUB COVER	1		53
CFG530	D720386700	FLANGE + BASKET UNIT	1		90
CFG540	D428012500	MOTOR FIXING SPACER	1		1
CFG550	D718009600	BOTTOM UNIT AND BEARING	1		66
CFG560	D526028101	FIXED THERMOSTAT	1		10
CFG580	D436001300	PULLEY WASHER	1		1
CFG590	D266005900	COUNTERWEIGHT SUPPORT PLATE	2		3
CFG600	D402006400	COUNTERWEIGHT BOLT FIXING GASKET	2		2
CFG670	D720023700	COMPLETE BEARINGS SET	1		14
CFG730	D720145600	LOCKING-RING ASSEMBLY	1		10
CFH003	D432009400	SCREW FOR FIXING SCROLL TO FAN MOTOR BRA	3		1
CFH004	D434006300	FAN MOTOR FIXING NUT	2		1
CFH020	D430013600	HEATING ELEMENT FIXATION SCREW	1		1
CFH030	D720125900	PLASTIC AIR CONVEYOR	1		13
CFH040	D402014000	RUBBER SLEEVE FOR AIR PIPE	1		10
CFH060	D432015900	STEAM CONDENSER FIXING SCREW	4		1
CFH100	D368016500	TOP ALUMINIUM AIR CONVEYOR	1		31
CFH120	D524022800	BOTTOM DRYER HEATING ELEMENT	1		10
CFH130	D368016600	BOTTOM ALUMINIUM AIR CONVEYOR	1		26
CFH140	D179001900	THERMIC CONVEYOR INSULATION	1		10
CFH150	D444020700	CONVEYOR SPRING SEAL	1		2
CFH160	D402003400	RUBBER CONVEYOR	1		10
CFH200	D268010200	WASHER-DRYER FAN	1		13
CFH210	D436001000	ARCHIMEDEAN SCREW SUPPORT WASHER	2		1
CFH220	D526029700	WORKING THERMOSTAT	1		13
CFH230	D402007800	ARCHIMEDEAN SCREW AND SHAFT GASKET	1		2
CFH240	D402017000	FAN ARCHIMEDEAN SCREW GASKET	1		2
CFH250	D398095500	FAN ARCHIMEDEAN SCREW	1		7
CFH260	D432011500	SCREWS FOR FIXING SUPPORT TO TUB	2		1
CFH280	D260002800	ARCHIMEDEAN SCREW MOTOR SUPPORT	1		4
CFH290	D512011700	FAN MOTOR	1		31
CFH300	D432006400	BOTTOM CONVEYOR TUB FIXING SCREWS	1		1
CFH300	D432006400	BOTTOM CONVEYOR TUB FIXING SCREWS	3		1

Code Esp.	N.Ref.	Item Description	Quantity Of Pieces	Expiry Date	Unit Price
CFH300	D432006600	BOTTOM CONVEYOR TUB FIXING SCREWS	1		1
CFH320	D720460100	HEATING ELEMENT BOX UNIT	1	24.05.2005	90
CFH320	D720462400	HEATING ELEMENT BOX UNIT	1		90
CFH330	D444002400	AIR PIPE SLEEVE SPRING	1		5
CFH340	D440001400	AIR PIPE SLEEVE BAND	1		2
CFH350	D444010600	THERMOSTAT FIXING SPRING	1		4
CFH360	D432004600	THERMOSTAT SCREW	2		1
CFH370	D526011300	THERMOSTAT	1		7
CFZ010	D432027500	PACKING SCREWS	4		1
CFZ030	D470006200	RUBBER PACKING CAP	4		2
CFZ040	D470004600	PLASTIC PACKING SPACER	4		3
CFZ280	D470016000	BOTTOM SHELL FOR PACKAGING	1		12
CFZ290	D470016100	TOP SHELL FOR PACKAGING	1		10
CFZ300	D476011100	FRONT RIGHT-LEFT ANGLE	2		3
CFZ300	D476026100	FRONT RIGHT-LEFT ANGLE	2		3