

- \* Depending on the software installed or your service provider or country, some of the descriptions in this guide may not match your phone exactly.
- \* Depending on your country, your phone and accessories may appear different from the illustrations in this guide.

**SAMSUNG ELECTRONICS**



© Vodafone Group 2007. Vodafone, the Vodafone logos, and Vodafone live! are trade marks of the Vodafone Group. Other product and company names mentioned herein may be the trade marks of their respective owners.

Printed in Korea  
Code No.:GH68-13682A  
English. 02/2007. Rev. 1.0

User Manual  
SGH-E250V

Designed for  
Vodafone live!





# Important safety precautions



Failure to comply with the following precautions may be dangerous or illegal.

## Copyright information

- Bluetooth<sup>®</sup> is a registered trademark of the Bluetooth SIG, Inc. worldwide.
- Java<sup>™</sup> is a trademark or registered trademark of Sun Microsystems, Inc.
- Picstel and Picstel Viewer<sup>™</sup> are trademarks of Picstel Technologies, Inc.

## Drive safely at all times

Do not use a hand-held phone while driving. Park your vehicle first.

## Switch off the phone when refuelling

Do not use the phone at a refuelling point (service station) or near fuels or chemicals.

## Switch off in an aircraft

Wireless phones can cause interference. Using them in an aircraft is both illegal and dangerous.

## Switch off the phone near all medical equipment

Hospitals or health care facilities may be using equipment that could be sensitive to external radio frequency energy. Follow any regulations or rules in force.

## Interference

All wireless phones may be subject to interference, which could affect their performance.

## Be aware of special regulations

Meet any special regulations in force in any area and always switch off your phone whenever it is forbidden to use it, or when it may cause interference or danger.


## Water resistance

Your phone is not water-resistant. Keep it dry.

## Sensible use

Use only in the normal position (held to your ear). Avoid unnecessary contact with the antenna when the phone is switched on.

## Emergency calls

Key in the emergency number for your present location, then press .

## Keep your phone away from small children

Keep the phone and all its parts, including accessories, out of the reach of small children.

## Accessories and batteries

Use only Samsung-approved batteries and accessories, such as headsets and PC data cables. Use of any unauthorised accessories could damage you or your phone and may be dangerous.

- The phone could explode if the battery is replaced with an incorrect type.
- Dispose of used batteries according to the manufacturer's instructions.



At very high volumes, prolonged listening to a headset can damage your hearing.

## Qualified service

Only qualified service personnel may repair your phone.

For more detailed safety information, see "Health and safety information" on page 36.

# About this Guide

This User's Guide provides you with condensed information about how to use your phone.

In this guide, the following instruction icons appear:



Indicates that you need to pay careful attention to the subsequent information regarding safety or phone features.



Indicates that you need to press the Navigation keys to scroll to the specified option and then select it.



Indicates a key on the phone. For example, [↶]



Indicates a soft key, whose function is displays on the phone screen. For example, <Menu>



- **Camera and camcorder**

Use the camera module on your phone to take a photo or record a video.

## *Special features of your phone*



- **Media player**

Play media files on your phone. You can enjoy high quality videos and music.



- **FM radio**

Listen to your favourite radio stations anytime, anywhere.



- **Digital data printing**  
Print images, messages, and other personal data directly from your phone.



- **Bluetooth**  
Transfer media files and personal data and connect to other devices using free, wireless Bluetooth technology.



- **Offline mode**  
Switch your phone to use its none-wireless functions in an aeroplane.



- **Multimedia Message Service (MMS)**  
Send and receive MMS messages with a combination of text, image, video, and audio.



- **Email**  
Send and receive emails with image, video, and audio attachments.



- **Postcard**  
Send photos to your family or friends as an actual postcard.



- **Java**  
Enjoy Java™-based embedded games and download new games.



- **Voice recorder**  
Record memos or sounds.

## Contents

### **Unpack 6**

---

*Make sure you have each item*

### **Get started 6**

---

*First steps to operating your phone*

Install and charge the phone .....	6
Power on or off .....	7
Phone layout .....	7
Keys and display .....	8
Access menu functions .....	11
Enter text .....	11
Customise your phone .....	12

### **Step outside the phone 15**

---

*Begin with call functions, camera, music player, web browser, and other special features*

Make or answer calls .....	15
Use the camera .....	16

Play music .....	17
Listen to the FM radio .....	18
Browse the web .....	19
Use Phonebook .....	20
Send messages .....	20
View messages .....	23
Use Bluetooth .....	24

### **Menu functions 26**

---

*All menu options listed*

### **Health and safety information 36**

---

## Overview of menu functions

To access Menu mode, press <Menu> in Idle mode.

### 1 Entertainment

- 1 Media player
- 2 Games
- 3 FM radio

### 2 Vodafone live!

- 1 Vodafone live!
- 2 Enter URL
- 3 Bookmarks
- 4 Clear cache
- 5 Browser settings
- 6 Games
- 7 Ringtones
- 8 Pictures
- 9 News
- 10 Sports

### 3 Calls

- 1 All calls
- 2 Missed calls
- 3 Dialed calls
- 4 Received calls

### 3 Calls (continued)

- 5 Call time
- 6 Delete more
- 7 Call cost<sup>1</sup>

### 4 Camera

### 5 Messaging

- 1 Create
- 2 Inbox
- 3 Drafts
- 4 Outbox
- 5 Sent messages
- 6 Email inbox
- 7 Call voicemail
- 8 Message archive
- 9 Templates
- 10 Delete more
- 11 Messaging settings
- 12 Memory status
- 13 Media album<sup>2</sup>

### 6 My files

- Pictures
- Videos
- Music
- Sounds & Ringtones
- Games
- Applications
- Other documents
- Memory card<sup>3</sup>
- Memory status

### 7 Organiser & Tools

- 1 SIM application toolkit<sup>1</sup>
- 2 Alarms
- 3 Calendar
- 4 Memo
- 5 Bluetooth
- 6 Voice recorder
- 7 World clock
- 8 Calculator
- 9 Converter
- 10 Timer
- 11 Stopwatch

### 8 Contacts

### 9 Settings

- 1 Phone settings
- 2 Display settings
- 3 Messaging settings
- 4 Call settings
- 5 Contact settings
- 6 Network settings
- 7 Security
- 8 Memory status
- 9 Key management

- 
1. Shows only if supported by your SIM card.
  2. Shows only if supported by your country.
  3. Shows only if a memory card is inserted into the phone.



## Unpack

Make sure you have each item

- Phone
- Travel Adapter
- Battery
- User's Guide
- Headset

You can obtain various accessories from your local Samsung dealer.

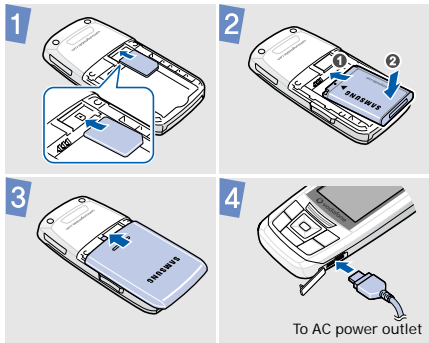


The items supplied with your phone and the accessories available at your Samsung dealer may vary, depending on your country or service provider.

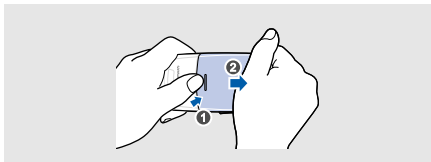
## Get started

First steps to operating your phone

### Install and charge the phone




## Removing the battery cover




## Power on or off

### Switch on

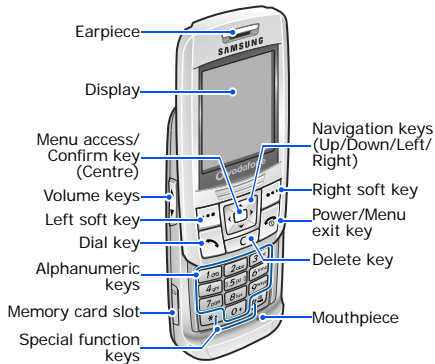
1. Open the phone.
2. Press and hold [  ].
3. If necessary, enter the PIN and press <OK>.

### Switch off

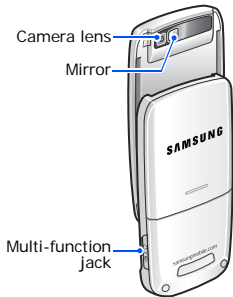
1. Open the phone.
2. Press and hold [  ].

## Phone layout

### Front view



## Rear view



When you close the phone, it locks the exposed keys to prevent any unwanted phone operations from accidentally pressing any of the keys. To unlock the keypad, press <Unlock> and then <OK>.

## Keys and display

### Keys



Perform the function indicated on the bottom line of the display.



In Idle mode, access the following menus directly:

- Up: **Vodafone live!**
- Down: **Contact list**
- Left: **Create message**
- Right: **My files**

You can assign a shortcut to a key. See p. 14.

In Menu mode, scroll through menu options.



In Idle mode, access Menu mode.  
In Menu mode, select the highlighted menu option or confirm input.



Make or answer a call.  
In Idle mode, retrieve numbers recently dialed, missed, or received.



Delete characters from the display or items in an application.



Press and hold to switch the phone on or off.  
End a call.  
In Menu mode, cancel input and return the phone to Idle mode.



Enter numbers, letters, and some special characters.



Enter special characters or perform special functions.



Adjust the phone volume.

## Icons

The following icons may appear on the top line of the screen to indicate your phone's status. Depending on your country or service provider, the icons shown on the display may vary.



Signal strength



Call in progress



Out of your service area or Offline mode



Alarm set



SOS message feature active



New message

- : Text message
- : Multimedia message
- : Voicemail
- : Email



Message inbox full



Call diverting active



Bluetooth active



Bluetooth hands-free car kit or headset connected



Synchronised with PC



GPRS (2.5G) network



EDGE network



Transferring data in EDGE network



Home Zone



Office Zone



Memory card inserted




Sound profile

- : Normal
- : Silent
- : Car
- : Meeting
- : Outdoor







Battery power level

## Access menu functions

Select an option	<ol style="list-style-type: none"><li>1. Press a desired soft key.</li><li>2. Press the Navigation keys to move to the next or previous option.</li><li>3. Press &lt;<b>Select</b>&gt; or [Centre] to confirm the function displayed or option highlighted.</li><li>4. Press &lt;<b>Back</b>&gt; to move up one level. Press [] to return to Idle mode.</li></ol>
Use menu numbers	Press the number key corresponding to the option you want.

## Enter text

Change the text input mode	<ul style="list-style-type: none"><li>• Press and hold [*] to switch between T9 mode () and ABC mode ().</li><li>• Press [*] to change case or switch to Number mode ().</li><li>• Press and hold [#] to switch to Symbol mode ().</li></ul>
ABC mode	<p>To enter a word:</p> <p>Press the appropriate key until the character you want appears on the display.</p>

T9 mode	<p>To enter a word:</p> <ol style="list-style-type: none"><li>1. Press [2] to [9] to start entering a word.</li><li>2. Enter the whole word before editing or deleting characters.</li><li>3. When the word displays correctly, press [#] to insert a space. Otherwise, press [0] to display alternative word choices.</li></ol>
Number mode	Press the keys corresponding to the digits you want.
Symbol mode	Press the corresponding number key to select a symbol.

#### Other operations

- Press [1] to enter punctuation marks or special characters.
- Press [#] to insert a space.
- Press the Navigation keys to move the cursor.
- Press [C] to delete characters one by one.
- Press and hold [C] to clear the entire display.

## Customise your phone

---

#### Display language

1. In Idle mode, press <Menu> and select **Settings** → **Phone settings** → **Language**.
2. Select a language.

---

## Call ringer melody

To change the profile properties:

1. In Idle mode, press <Menu> and select **Settings** → **Phone settings** → **Phone profiles**.
2. Scroll to the sound profile you are using.
3. Press <Options> and select **Edit**.
4. Select **Voice call ringtone** → a ringtone.
5. Press <Save>.

---

To change the sound profile:

1. In Idle mode, press <Menu> and select **Settings** → **Phone settings** → **Phone profiles**.
2. Select the profile you want.

---

## Key tone volume

In Idle mode, press [▲/▼] to adjust the key tone volume.

---

## Idle mode wallpaper

1. In Idle mode, press <Menu> and select **Settings** → **Display settings** → **Wallpaper** → **Wallpaper**.
2. Select an image category.
3. Select an image.
4. Press <Save>.



### Menu shortcuts

1. In Idle mode, press <Menu> and select **Settings** → **Phone settings** → **Shortcuts**.
2. Select a key.
3. Select a menu to be assigned to the key.

### Silent profile

You can activate Silent profile to avoid disturbing other people. In Idle mode, press and hold [#].

### Phone lock

1. In Idle mode, press <Menu> and select **Settings** → **Security** → **Change password**.
2. Enter the default password, **00000000**, and press <OK>.
3. Enter a new 4- to 8-digit password and press <OK>.
4. Enter the new password again and press <OK>.
5. Select **Phone lock**.
6. Select **Enable**.
7. Enter the password and press <OK>.





## Step outside the phone

Begin with call functions, camera, music player, web browser, and other special features



Services might not be available in all countries.

## Make or answer calls

### Make a call

1. In Idle mode, enter an area code and phone number.
2. Press [].  
Press [/] to adjust the volume.
3. Press [] to end the call.

### Answer a call

1. When the phone rings, press [].
2. Press [] to end the call.

### Use the speakerphone feature

During a call, press [Centre] and then <Yes> to activate the speaker.


Press [Centre] again to switch back to the earpiece.

### Make a multi-party call

1. During a call, call the second participant.  
The first call is put on hold.
2. Press <Options> and select **Join**.

**Make a multi-party call**

(continued)

3. Repeat step 1 and 2 to add more participants.
4. During a multi-party call:
  - Press <**Options**> and select **Split** to have a private conversation with one participant.
  - Press <**Options**> and select **Remove** to drop one participant.
5. Press [] to end the multi-party call.

## Use the camera

**Take a photo**

1. In Idle mode, press <**Menu**> and select **Camera** to turn on the camera.
2. Aim the lens at the subject and make any desired adjustments.
3. Press [Centre] to take a photo. The photo is saved automatically.
4. Press <**Back**> to take another photo.

**View a photo**

1. In Idle mode, press <**Menu**> and select **My files** → **Pictures**.
2. Select the photo you want.

---

### Record a video

1. In Idle mode, press <Menu> and select **Camera** to turn on the camera.
2. Press [1] to switch to Record mode.
3. Press [Centre] to start recording.
4. Press [Centre] or <■> to stop recording. The video is saved automatically.
5. Press <↺> to record another video.

---

### Play a video

1. In Idle mode, press <Menu> and select **My files** → **Videos**.
2. Select the video clip you want.

## Play music

---

### Copy music files to the phone

Use these methods:

- Download from Vodafone Live!
- Download from a computer using the optional Samsung PC Studio. See Samsung PC Studio User's Guide.
- Receive via Bluetooth
- Copy to a memory card and insert the card into the phone

### Create a play list

1. In Idle mode, press <**Menu**> and select **Entertainment** → **Media player** → **Music**.
2. Press <**Options**> and select **Add music from** → a memory location.
3. Press [Centre] to select the files you want and press <**Add**>.

### Play music files

1. From the music player screen, press [Centre].
2. During playback, use the following keys:
  - Centre: pause or resume playback.

- Left: return to the previous file.
- Right: skip to the next file.
- ▲/▼: adjust the volume.

3. Press [Down] to stop playback.

## Listen to the FM radio

### Listen to the radio

1. Plug the connector of the supplied headset into the multi-function jack.
2. In Idle mode, press <**Menu**> and select **Entertainment** → **FM radio**.

- 
3. Press [Centre] to turn on the radio.
  4. Press [Left] or [Right] to find available radio stations.
  5. Press [Centre] to turn off the radio.

---

### Store radio stations

1. From the station list, press <**Options**> and select **Add**.
2. Enter the title of the station and the frequency of the station and press <**Save**>.
3. Select a location in which you want to store the station.

## Browse the web

---

### Launch the web browser

In Idle mode, press <**live!**>. The Vodafone Live! homepage opens.

---

### Navigate the web

- To scroll through browser items, press [Up] or [Down].
- To select an item, press [Centre].
- To return to the previous page, press <**Back**> or [C].
- To return to the homepage, press and hold [C].
- To access other phone menus, press <**Options**>.

## Use Phonebook

---

### Add a contact

1. In Idle mode, enter a phone number and press [Centre].
2. Select a memory location → **New**.
3. For **Phone**, select a number type.
4. Specify contact information.
5. Press <**Save**> or [Centre] to save the contact.

### Find a contact

1. In Idle mode, press <**Menu**> and select **Contacts**.
2. Enter the first few letters of the name you want.

- 
3. Select a contact.
  4. Scroll to a number and press [↵] to dial, or press <**Options**> and select **Edit** to edit contact information.

## Send messages

---

### Send a text message

1. In Idle mode, press <**Menu**> and select **Messaging** → **Create** → **Message**.
2. Enter the message text, press <**Options**> and select **Send**.
3. Enter destination numbers.
4. Press [Centre] to send the message.

---

### Send a multimedia message

1. In Idle mode, press <Menu> and select **Messaging** → **Create** → **Message**.
2. Enter the message text.
3. Press <Options> and select **Add subject**.
4. Enter the message subject.
5. Press [Down] to move to the text field.
6. Press <Options> and select **Add item, Create item, Insert entry, or Attach details**.
7. Add a media file, Contacts entry, calendar item, bookmark item.

---

### Send a voice message

8. Press <Options> and select **Send**.
  9. Enter destination numbers or email addresses.
  10. Press [Centre] to send the message.
- 
1. In Idle mode, press <Menu> and select **Messaging** → **Create** → **Voice message**.
  2. Record your message and press <Save>.
  3. Press <Options> and select **Send**.
  4. Enter destination numbers.
  5. Press [Centre] to send the message.



### Send a postcard

1. In Idle mode, press <**Menu**> and select **Messaging** → **Create** → **Live! Postcard**.
2. Enter the message text.
3. Press <**Options**> and select **Add picture** → an option.
4. Select a photo or take a new photo.
5. Press <**Options**> and select **Send**.
6. Specify destination information.
7. Press [Centre] to send the postcard.



Depending on the country, this feature may not be available and be labelled differently in some countries.

### Send an email

1. In Idle mode, press <**Menu**> and select **Messaging** → **Create** → **Email**.
2. Select **Subject**.
3. Enter the email subject and press [Centre].
4. Select **Message**.
5. Enter the email text and press [Centre].
6. Select **File attach**.
7. Add image, video, sound, music, or document files.

- 
8. Press **<Options>** and select **Send**.
  9. Enter email addresses.
  10. Press [Centre] to send the email.

## View messages

---

### View a text message

1. In Idle mode, press **<Menu>** and select **Messaging** → **Inbox**.
2. Select a text message.

### View a multimedia message

- 
1. In Idle mode, press **<Menu>** and select **Messaging** → **Inbox**.
  2. Select a multimedia message.

### View an email

- 
1. In Idle mode, press **<Menu>** and select **Messaging** → **Email inbox**.
  2. Select **Check new mail**.
  3. Select an email or a header.
  4. If you selected a header, press **<Options>** and select **Retrieve** to view the body of the email.

## Use Bluetooth

Your phone is equipped with Bluetooth technology, enabling you to connect the phone wirelessly to other Bluetooth devices and exchange data with them, talk hands-free, or control the phone remotely.

### Turn on Bluetooth

1. In Idle mode, press **<Menu>** and select **Organiser & Tools** → **Bluetooth** → **Activation** → **On**.
2. Select **My phone's visibility** → **On** to allow other devices to find your phone.

### Search for and pair with a Bluetooth device

1. In Idle mode, press **<Menu>** and select **Organiser & Tools** → **Bluetooth** → **My devices** → **Search new device**.
2. Select a device.
3. Enter a Bluetooth PIN or the other device's Bluetooth PIN, if it has one, and press **<OK>**.  
When the owner of the other device enters the same code, the pairing is complete.

---

### Send data

1. Access an application, **Contacts**, **My files**, **Calendar**, or **Memo**.
2. Select the item you want to send.
3. Press **<Options>** and select **Send via/Upload** → **Bluetooth/Via Bluetooth**.
4. For sending a contact, select which data you want to send.
5. Search for and select a device.
6. If necessary, enter the Bluetooth PIN and press **<OK>**.

---

### Receive data

1. When a device attempts to access your phone, press **<Yes>** to permit the connection.
2. If necessary, press **<Yes>** to confirm that you are willing to receive.

## Menu functions

*All menu options listed*

This section provides brief explanations of menu functions on your phone.

Services might not be available in all countries.

### Entertainment

Menu	Description
Media player	Listen to music or play videos.
Games	Access the embedded Java games and download Java applications

Menu	Description
FM radio	Listen to music or news via the FM radio on your phone.

### Vodafone live!

Menu	Description
Vodafone live!	Connect your phone to the network and load the Vodafone Live! homepage.
Enter URL	Enter a URL address and access the associated web page.
Bookmarks	Save URL addresses in order to quickly access web pages.

Menu	Description
Clear cache	Clear the cache, which is a temporary memory site that stores recently accessed web pages.
Browser settings	Select a connection profile to be used for accessing the wireless web.
Games	Access Vodafone Live! to download new games.
Ringtones	Access Vodafone Live! to download ringtones and melodies.
Pictures	Access Vodafone Live! to download pictures and animated images.
News	Access Vodafone Live! to obtain the latest news.

Menu	Description
Sports	Access Vodafone Live! to check sports news and scores.

## Calls

Menu	Description
All calls, Missed calls, Dialed calls, Received calls	Check the most recent calls dialed, received, or missed.
Call time	Check the time record for calls made and received.
Delete more	Delete all of the records in each call type.

Menu	Description
Call cost	Check the cost of your calls, if supported by your SIM card.

### Camera

Use the camera embedded in your phone to take photos and record videos.

### Messaging

Menu	Description
Create	Create and send text, multimedia, voice, or email messages, and postcards.
Inbox	Access messages that you have received.

Menu	Description
Drafts	Access messages that you have saved to send at a later time.
Outbox	Access messages that the phone is attempting to send or has failed to send.
Sent messages	Access messages that you have sent.
Email inbox	Access emails that you have received.
Call voicemail	Access voicemails that you have received.
Message archive	Access messages that you have moved from other message folders.

Menu	Description
Templates	Make and use templates of frequently used messages or passages.
Delete more	Delete messages in each message folder all at once.
Messaging settings	Set up various options for using the messaging services.
Memory status	Check the amount of memory currently in use in each message folder.
Media album	Access the Media Album service, with which you can organise your own online media album.

## My files

Menu	Description
Pictures, Videos, Music, Sounds & Ringtones, Games, Applications, Other documents	Access media files and other files stored in the phone's memory.
Memory card	Access the files stored on a memory card. This menu is only available when you insert a memory card into the phone.
Memory status	Check memory information for media items.



**Organiser & Tools**

Menu	Description
SIM application toolkit	Use a variety of additional services offered by Vodafone.
Alarms	Set alarms. The alert type for a normal alarm corresponds to the call alert type setting.
Calendar	Keep track of your schedule.
Memo	Make memos for things that are important and manage them.
Bluetooth	Connect the phone wirelessly to other Bluetooth devices.

Menu	Description
Voice recorder	Record voice memos and any other sounds.
World clock	Set your local time zone and find out the current time in another part of the world.
Calculator	Perform arithmetic functions.
Converter	Do conversions, such as length and temperature.
Timer	Set a period of time for the phone to count down.
Stopwatch	Measure elapsed time.

## Contacts

Search for contact information stored in Contacts.

## Settings

Menu	Description
Phone settings → Phone profiles	Change the sound settings of the phone for different events or situations.
Phone settings → Language	Select a language for the display text.
Phone settings → Assign ringtone	Select an alert type for incoming calls or messages.
Phone settings → Shortcuts	Use the Navigation keys as shortcuts to access specific menus directly from Idle mode.

Menu	Description
Phone settings → Time and date	Change the time and date displayed on your phone.
Phone settings → Greeting message	Enter the greeting that is displayed briefly when the phone is switched on.
Phone settings → Slide settings	Set how the phone reacts when you open it for an incoming call, and when you close it while using a function.
Phone settings → Volume key	Set how the phone reacts if you press and hold [▲/▼] when a call comes in.
Phone settings → Anykey answer	Set the phone to answer a call when you press any key, except for <Reject>, [📞], and [▲/▼].

Menu	Description
Phone settings → USB settings	Select a USB mode that will be used when you connect your phone to another device via USB interface.
Phone settings → Offline mode	Switch the phone to Offline mode, in which the phone functions requiring network connection are deactivated.
Phone settings → Reset settings	Reset the phone's settings you have changed.
Display settings → Wallpaper	Change the background image that is displayed in Idle mode.
Display settings → Text display	Change the display settings for the text displayed on the idle screen.

Menu	Description
Display settings → Brightness	Adjust the brightness of the display for varying lighting conditions.
Display settings → Backlight time	Select the length of time the backlight or display stays on when the phone is not used.
Display settings → Keypad light	Set how the phone controls the use of the keypad light.
Display settings → Dialling display	Customise the settings for the display while dialling.
Display settings → Calendar	Display the calendar of the current month on the idle screen.

Menu	Description
Display settings → Show caller ID	Set the phone to display missed call notifications with the most recently missed caller's information.
Messaging settings	Set up various options for using the messaging services.
Call settings → Show my number	Set the phone to hide your phone number from the person you are calling.
Call settings → Diverts	Set the phone to reroute incoming calls to a phone number that you specify.
Call settings → Restrict calls	Set the phone to restrict calls.

Menu	Description
Call settings → Call waiting	Set the phone to inform you when someone is calling you while on another call.
Call settings → Auto redial	set the phone to make up to ten attempts to redial a phone number after an unsuccessful call.
Contact settings → Speed dialling	Assign a speed dial number for your most frequently dialled numbers.
Contact settings → Sort contacts by	Change the sort order of the contact list.
Contact settings → Save new contacts to	Select a default memory location for saving contacts.

## Menu functions

Menu	Description
Contact settings → View contacts from	Select a memory location from which Contacts shows entries.
Contact settings → Copy all to phone	Copy all of the contacts stored on the SIM card to the phone's memory
Contact settings → Copy all to SIM	Copy all of the contacts stored in the phone's memory to on the SIM card.
Contact settings → Delete more	Delete all of the contacts from your phone's memory, your SIM card, or all.
Contact settings → Memory status	Check memory information for contacts.

Menu	Description
Network settings → Network selection	Select the network to be used while roaming outside of your home area, or let the network be chosen automatically.
Network settings → Browser settings	Select a connection profile to be used for accessing the wireless web.
Network settings → Band selection	Change to an appropriate band when you travel abroad.
Security → PIN check	Activate your PIN to protect your SIM card against unauthorised use.
Security → Change PIN	Change the PIN.

Menu	Description
Security → Phone lock	Activate your phone password to protect your phone against unauthorised use.
Security → Change password	Change the phone password.
Security → Privacy	Lock access to call logs, messages, or files.
Security → SIM lock	Set the phone to work only with the current SIM card by assigning a SIM lock password.

Menu	Description
Security → FDN mode	Set the phone to restrict calls to a limited set of phone numbers, if supported by your SIM card.
Security → Change PIN2	Change your current PIN2, if supported by your SIM card.
Security → Mobile tracker	Set the phone to send the preset tracking message to your family or friends when someone tries to use your phone with another SIM card.

Menu	Description
Memory status	Check memory information for each items in the phone's memory or on a memory card.
Key management	Manage the licence keys you have acquired to activate media files locked by DRM systems.

## *Health and safety information*

### **SAR certification information**

#### **THIS MODEL MEETS INTERNATIONAL GUIDELINES FOR EXPOSURE TO RADIO WAVES**

Your mobile phone is a radio transmitter and receiver. It is designed not to exceed the limits for exposure to radio waves recommended by international guidelines. These guidelines were developed by the independent scientific organization ICNIRP and include safety margins designed to assure the protection of all persons, regardless of age and health.

The guidelines use a unit of measurement known as the Specific Absorption Rate, or SAR. The SAR limit for mobile devices is 2.0 W/kg and the highest SAR value for this device when tested at the ear was 0.702 W/kg<sup>1</sup>. As mobile phones offer a range of functions, they can be used in other positions, such as on the body as described in this user guide<sup>2</sup>. In this case, the highest tested SAR value is 0.367 W/kg.

As SAR is measured utilizing the devices highest transmitting power the actual SAR of this device while operating is typically below that indicated above. This is due to automatic changes to the power level of the device to ensure it only uses the minimum level required to reach the network.

The World Health Organization has stated that present scientific information does not indicate the need for any special precautions for the use of mobile devices. They note that if you want to reduce your exposure then you can do so by limiting the length of calls or using a 'hands-free' device to keep the mobile phone away from the head and body.

- 
1. The tests are carried out in accordance with international guidelines for testing.
  2. For body worn operation, this model phone has been tested and meets the RF exposure guidelines when used with a Samsung-supplied or approved accessory designated for this product or when used with an accessory that contains no metal and that positions the handset a minimum of 1.5 cm from the body.

## **Precautions when using batteries**

---

- Never use a charger or battery that is damaged in any way.
- Use the battery only for its intended purpose.
- If you use the phone near the network's base station, it uses less power. Talk and standby time are greatly affected by the signal strength on the cellular network and the parameters set by the service provider.
- Battery charging time depends on the remaining battery charge, the type of battery, and the charger used. The battery can be charged and discharged hundreds of times, but it will gradually wear out. When the operation time is noticeably shorter than normal, it is time to buy a new battery.
- If left unused, a fully charged battery will discharge itself over time.
- Use only Samsung-approved batteries, and recharge your battery only with Samsung-approved chargers. Disconnect the charger from the power source when it is not in use. Do not leave the



- battery connected to a charger for more than a week, since overcharging may shorten its life.
- Extreme temperatures will affect the charging capacity of your battery: it may require cooling or warming first.
  - Do not leave the battery in hot or cold places because the capacity and lifetime of the battery will be reduced. Try to keep the battery at room temperature. A phone with a hot or cold battery may not work temporarily, even when the battery is fully charged. Li-ion batteries are particularly affected by temperatures below 0° C (32° F).
  - Do not short-circuit the battery. Accidental short-circuiting can occur when a metallic object like a coin, clip or pen causes a direct connection between the + and – terminals of the battery (metal strips on the battery). For example, do not carry a spare battery in a pocket or bag where the battery may contact metal objects. Short-circuiting the terminals may damage the battery or the object causing the short-circuiting.

- Dispose of used batteries in accordance with local regulations. Always recycle. Do not dispose of batteries in a fire.

### **Road safety**

---

Your wireless phone gives you the powerful ability to communicate by voice, almost anywhere, anytime. But an important responsibility accompanies the benefits of wireless phones, one that every user must uphold.

When you are driving a car, driving is your first responsibility. When using your wireless phone while driving, follow local regulations in the country or region you are in.

### **Operating environment**

---

Remember to follow any special regulations in force in the area you are in, and always switch off your phone whenever it is forbidden to use it, or when it may cause interference or danger.

When connecting the phone or any accessory to another device, read its user's guide for detailed safety instructions. Do not connect incompatible products.

As with other mobile radio transmitting equipment, users are advised that for the satisfactory operation of the equipment and for the safety of personnel, it is recommended that the equipment should only be used in the normal operating position (held to your ear with the antenna pointing over your shoulder).

## **Electronic devices**

---

Most modern electronic equipment is shielded from radio frequency (RF) signals. However, certain electronic equipment may not be shielded against the RF signals from your wireless phone. Consult the manufacturer to discuss alternatives.

### **Pacemakers**

Pacemaker manufacturers recommend that a minimum distance of 15 cm (6 inches) be maintained between a wireless phone and a pacemaker to avoid potential

interference with the pacemaker. These recommendations are consistent with the independent research and recommendations of Wireless Technology Research. If you have any reason to suspect that interference is taking place, switch off your phone immediately.

### **Hearing aids**

Some digital wireless phones may interfere with some hearing aids. In the event of such interference, you may wish to consult your hearing aid manufacturer to discuss alternatives.

### **Other medical devices**

If you use any other personal medical devices, consult the manufacturer of your device to determine if it is adequately shielded from external RF energy.

Your physician may be able to assist you in obtaining this information.

Switch off your phone in health care facilities when regulations posted in these areas instruct you to do so.

### **Vehicles**

RF signals may affect improperly installed or inadequately shielded electronic systems in motor vehicles. Check with the manufacturer or its representative regarding your vehicle.

You should also consult the manufacturer of any equipment that has been added to your vehicle.

### **Posted facilities**

Switch off your phone in any facility where posted notices require you to do so.

### **Potentially explosive environments**

---

Switch off your phone when in any area with a potentially explosive atmosphere, and obey all signs and instructions. Sparks in such areas could cause an explosion or fire resulting in bodily injury or even death.

Users are advised to switch off the phone while at a refuelling point (service station). Users are reminded of the need to observe restrictions on the use of radio equipment in fuel depots (fuel storage and distribution

areas), chemical plants, or where blasting operations are in progress.

Areas with a potentially explosive atmosphere are often but not always clearly marked. They include the areas below decks on boats, chemical transfer or storage facilities, vehicles using liquefied petroleum gas, such as propane or butane, areas where the air contains chemicals or particles, such as grain, dust or metal powders, and any other area where you would normally be advised to turn off your vehicle engine.

### **Emergency calls**


---

This phone, like any wireless phone, operates using radio signals, wireless, and landline networks as well as user-programmed functions, which cannot guarantee connection in all conditions. Therefore, you should never rely solely on any wireless phone for essential communications like medical emergencies.

To make or receive calls, the phone must be switched on and in a service area with adequate signal strength.

Emergency calls may not be possible on all wireless phone networks or when certain network services and/or phone features are in use. Check with local service providers.

To make an emergency call:

1. Switch on the phone.
2. Key in the emergency number for your present location. Emergency numbers vary by location.
3. Press [].

Certain features like Call Barring may need to be deactivated before you can make an emergency call. Consult this document and your local cellular service provider.

### **Other important safety information**

- Only qualified personnel should service the phone or install the phone in a vehicle. Faulty installation or service may be dangerous and may invalidate any warranty applicable to the device.

- Check regularly that all wireless phone equipment in your vehicle is mounted and operating properly.
- Do not store or carry flammable liquids, gases, or explosive materials in the same compartment as the phone, its parts, or accessories.
- For vehicles equipped with an air bag, remember that an air bag inflates with great force. Do not place objects, including installed or portable wireless equipment, in the area over the air bag or in the air bag deployment area. Improperly installed wireless equipment could result in serious injury if the air bag inflates.
- Switch off your phone before boarding an aircraft. It is dangerous and illegal to use wireless phones in an aircraft because they can interfere with the operation of the aircraft.
- Failure to observe these instructions may lead to the suspension or denial of telephone services to the offender, or legal action, or both.

## **Care and maintenance**

---

Your phone is a product of superior design and craftsmanship and should be treated with care. The suggestions below will help you fulfill any warranty obligations and allow you to enjoy this product for many years.

- Keep your phone and all its parts and accessories out of the reach of small children and pets. They may accidentally damage these things or choke on small parts.
- Keep the phone dry. Precipitation, humidity, and liquids contain minerals that corrode electronic circuits.
- Do not use the phone with a wet hand. Doing so may cause an electric shock to you or damage to the phone.
- Do not use or store the phone in dusty, dirty areas, as its moving parts may be damaged.
- Do not store the phone in hot areas. High temperatures can shorten the life of electronic devices, damage batteries, and warp or melt certain plastics.
- Do not store the phone in cold areas. When the phone warms up to its normal operating temperature, moisture can form inside the phone, which may damage the phone's electronic circuit boards.
- Do not drop, knock, or shake the phone. Rough handling can break internal circuit boards.
- Do not use harsh chemicals, cleaning solvents, or strong detergents to clean the phone. Wipe it with a soft cloth.
- Do not paint the phone. Paint can clog the device's moving parts and prevent proper operation.
- Do not put the phone in or on heating devices, such as a microwave oven, stove, or radiator. The phone may explode when overheated.

- When the phone or battery gets wet, the label indicating water damage inside the phone changes colour. In this case, phone repairs are no longer guaranteed by the manufacturer's warranty, even if the warranty for your phone has not expired.
- If your phone has a flash or light, do not use it too close to the eyes of people or animals. This may cause damage to their eyes.
- Use only the supplied or an approved replacement antenna. Unauthorised antennas or modified accessories may damage the phone and violate regulations governing radio devices.
- If the phone, battery, charger, or any accessory is not working properly, take it to your nearest qualified service facility. The personnel there will assist you, and if necessary, arrange for service.



# Declaration of Conformity (R&TTE)

For the following product :

GSM900/GSM1800/GSM1900 with Bluetooth

Portable Cellular Telephone

(Product description)

SGH-E250V

(Model name)

Manufactured at :

- Samsung Electronics Co., Ltd, 94-1, Imsoo-Dong, Gumi City, Kyung-Buk, Korea,  
730-350\*

(factory name, address)

to which this declaration relates, is in conformity with the following standards and/or other normative documents.

Safety	: EN 60950-1:2001
EMC	: EN 301 489-01 v1.4.1 (08-2002)
	EN 301 489-07 v1.2.1 (08-2002)
	EN 301 489-17 v1.2.1 (08-2002)
SAR	: EN 50360:2001
	EN 50361:2001
Network	: EN 301 511 v9.0.2 (03-2003)
	EN 300 328 v1.6.1 (11-2004)

We hereby declare that [all essential radio test suites have been carried out and that] the above named product is in conformity to all the essential requirements of Directive 1999/5/EC.

The conformity assessment procedure referred to in Article 10 and detailed in Annex[IV] of Directive 1999/5/EC has been followed with the involvement of the following Notified Body(ies):

BABT, Balfour House, Churchfield Road,  
Walton-on-Thames, Surrey, KT12 2TD, UK\*  
Identification mark: 0168

CE 0168

The technical documentation kept at :

Samsung Electronics QA Lab.

which will be made available upon request.  
(Representative in the EU)

Samsung Electronics Euro QA Lab,  
Blackbushe Business Park, Saxony Way,  
Yateley, Hampshire, GU46 6GG, UK\*

2006.10.30

(place and date of issue)

Yong-Sang Park / S. Manager

(name and signature of authorised person)



\* It is not the address of Samsung Service Centre. For the address or the phone number of Samsung Service Centre, see the warranty card or contact the retailer where you purchased your phone.