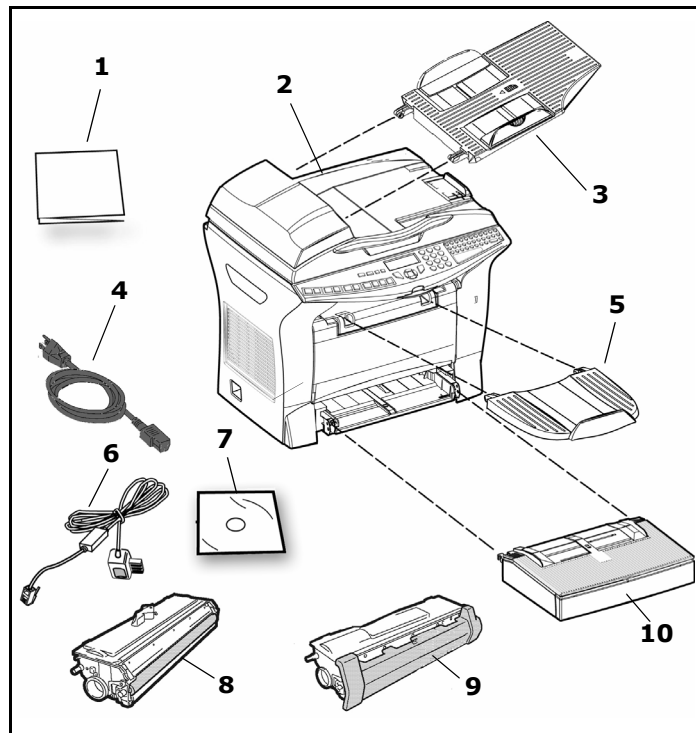


**B4545 MFP**  
**INSTALLATION GUIDE**

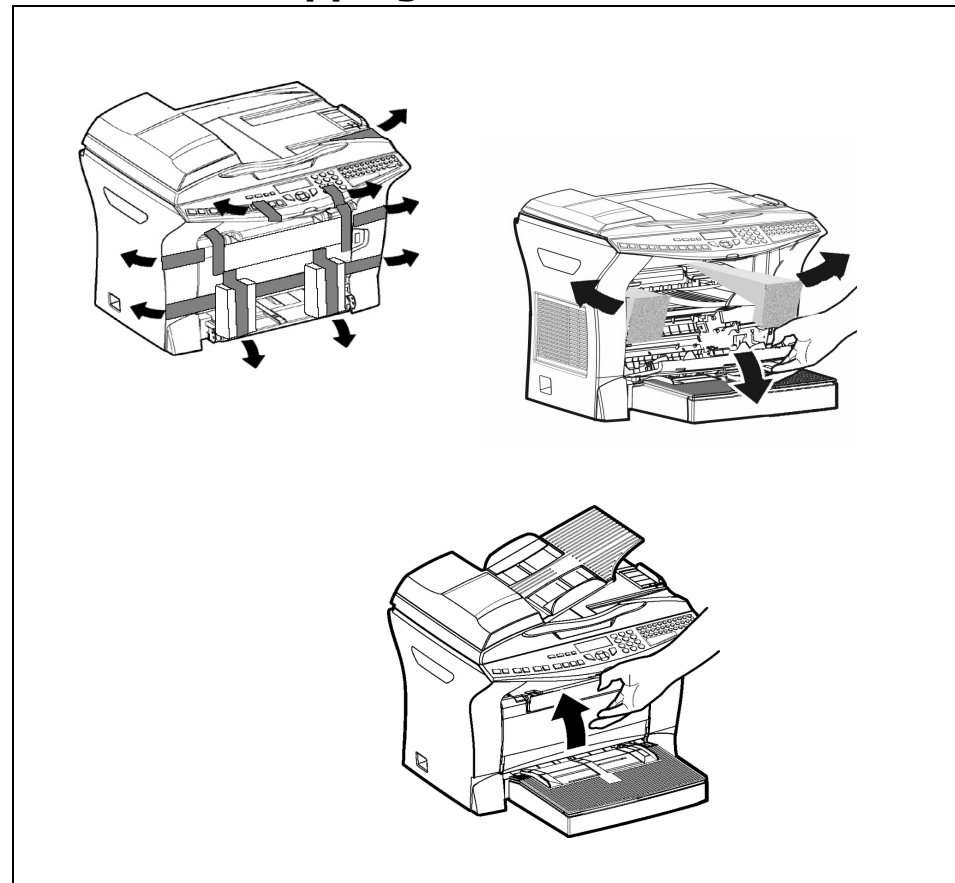
**1-Unpacking the box**

Take the protection profiles, the packing material and the machine out of the shipping box. Check that the following parts are in the box.

- 1 Warranty Guide
- 2 Terminal
- 3 Document Feeder
- 4 Power Cord
- 5 Printer Output Stacker
- 6 Phone Line Cord
- 7 CD-ROM
- 8 Image Drum Cartridge  
*Factory installed inside printer*
- 9 Toner Cartridge  
*Factory installed inside printer*
- 10 Printer Paper Tray  
*Packed separately in the shipping box.*



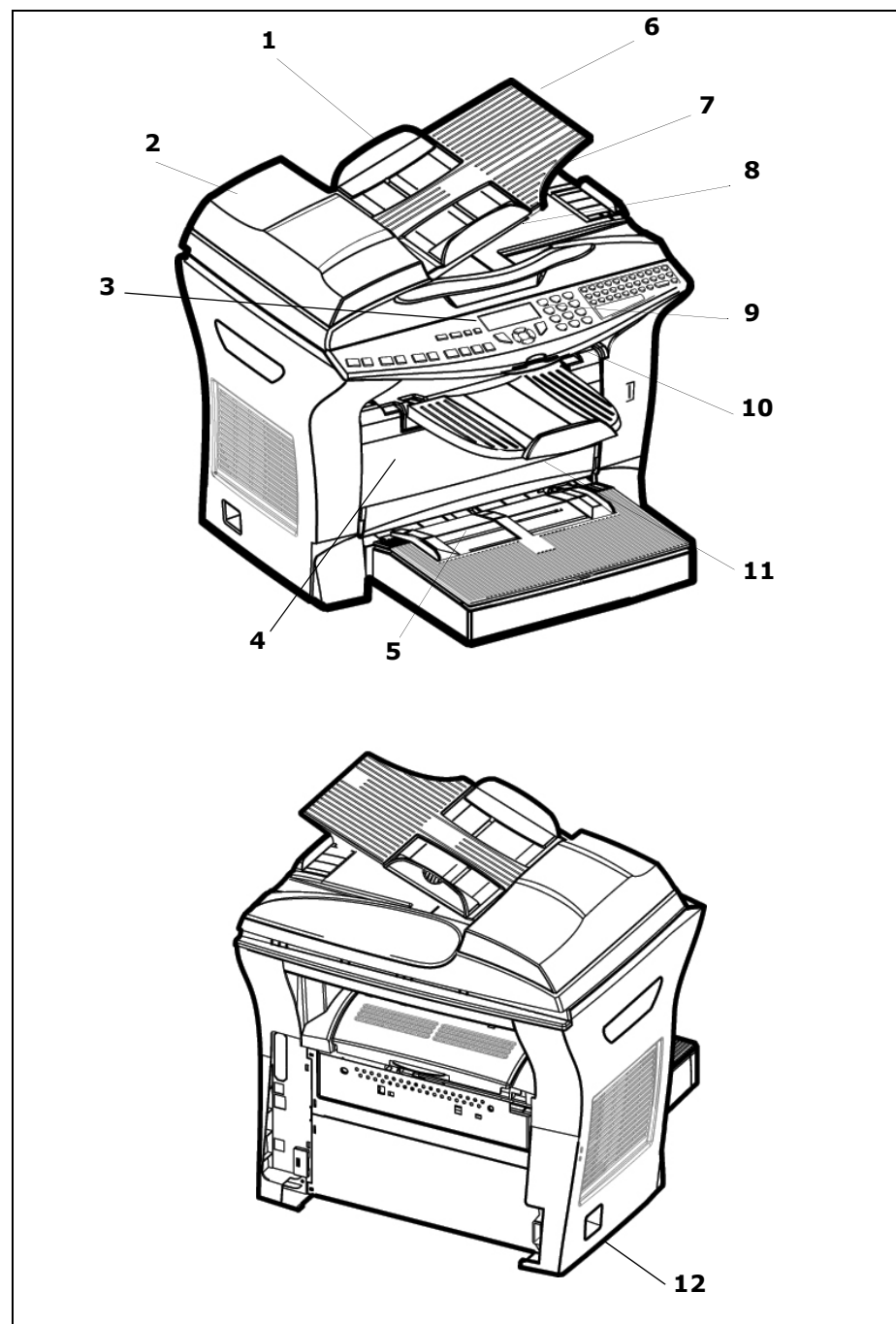
**2-Remove Shipping Restraints**



**3-Description of installation**

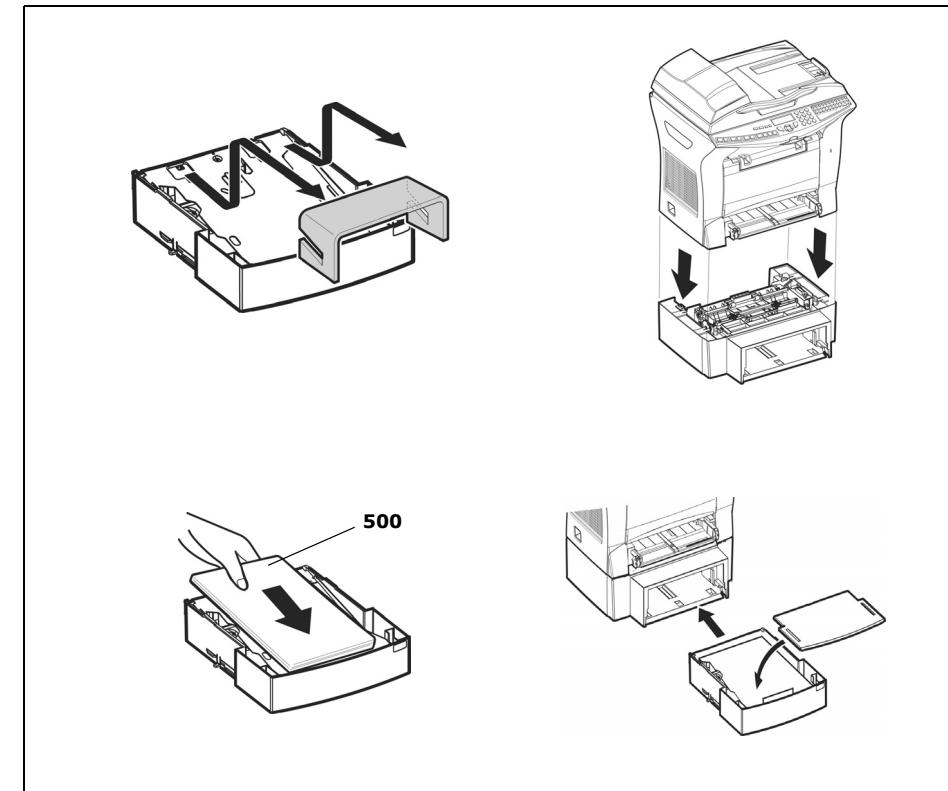
- 1 Adjustable Paper Guide
- 2 Scroll Scanner (ADF)
- 3 Panel
- 4 Printer
- 5 Printer Paper Tray
- 6 Document Feed Tray for Scanning
- 7 Original Document Output Stacker
- 8 Access Handle, Flatbed Scanner
- 9 Chip Card Reader
- 10 Printer Output Stacker
- 11 Manual Paper Feed Tray
- 12 On/Off Switch

For Detailed installation instructions, refer to the User Guide on the CD-ROM.



**4-Installing the second paper tray (Optional)**

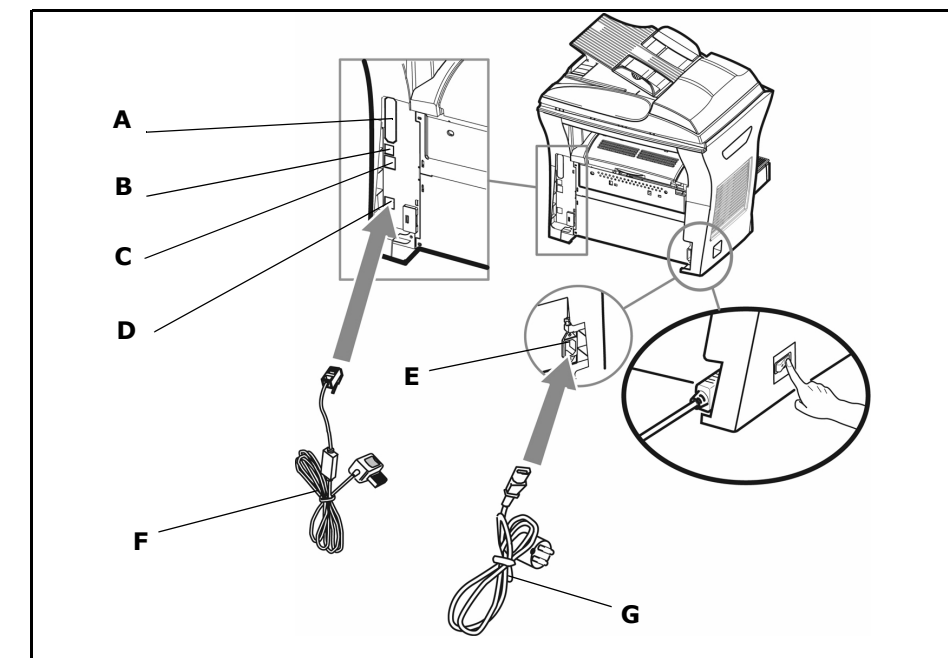
- 1. Remove the protective tape used to hold the various components in place.
- 2. Align the coupling pins of the additional paper tray unit with the corresponding notches in the bottom of the printer.



**5-Installing the duplex unit (Optional)**

For installing the duplex unit, refer to the User Guide on the CD-ROM.

**6-Connections**



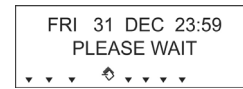
Make sure the On/Off switch is in position **0** (Off).

- A : Parallel port (not available)
- B : USB port
- C : LAN socket
- D : Telephone line socket
- E : Main plug
- F : Phone Line cord
- G : Power cord

## 7-Getting started

### First switch ON

The first time you switch on your terminal it displays



### Choose the language

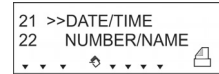
All the screens are in English. If you want to change the language, press the **2 0 3** keys. Then press **▲** or **▼** keys to choose a new language. Press **OK** to validate. Press the **Ⓢ** key.

**Attention - U.S. regulations require that all fax transmissions include the date, time it is sent, and identification of the sender.**

### Date and time settings

1. To adjust the date and time, press the **▼** and **2** keys.

2. The screen displays:



Press **OK**.

3. The screen displays:



Enter the date and time by using

the numerical keyboard. Press **OK**. Press the **Ⓢ** key to exit.

### Record your fax number and your name

First, you must set **Sending Header**.

1. Press the **▼ 2 9** keys.
2. Press **▼** key to choose **02 TX Header**. Press **OK**.
3. Press **1** to select **With**. Press **OK**. Press the **Ⓢ** key to exit.

To record your fax number and your name:

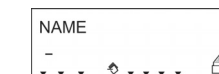
1. Press the **▼ 2 2** keys.

2. The screen displays



3. Enter the fax number by using the numerical keyboard. Press **OK**.

4. The screen displays



5. Enter your name by using the alphabetical keyboard. Press **OK** to validate. Press the **Ⓢ** key to exit.

### Functions guide

To print your terminal's functions guide, press the **i** key. This guide lists all the commands that you can carry out from your terminal's keyboard.

Consult the User Guide PDF file on the CD-ROM delivered with your terminal. We strongly recommend that you spend some time reading this booklet, in order to get the most benefit from the many features of your terminal.

## 8-Installing the Software

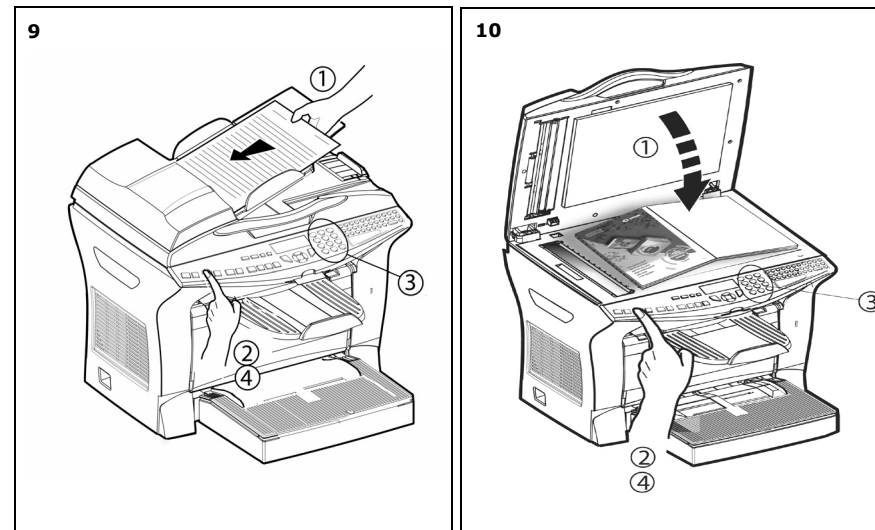
1. Insert the CD-ROM into your CD-ROM drive. The CD will autorun. If it doesn't click Start>Run>Browse. Browse to your CD-ROM drive. Double-click Install.exe. Click OK.
2. Select your language.
3. Accept the License Agreement.
4. Click All Products to install the drivers and software.
5. Follow the on-screen instructions.

## 9-Copying a document from the scanner (adf)

1. Insert your document in the document feeder of the terminal (print side up).
2. Press the **☐** key once. The screen displays **NUMBER OF COPIES**.
3. Enter the number of desired copies.
4. Press **☐** again to start the copy.

## 10-Copy a document from the flatbed

1. Position the document or a book page on the glass and close the cover.
2. Press the **☐** key once. The screen displays **NUMBER OF COPIES**.
3. Enter the number of copies desired.
4. Press **☐** again to start the copy.



**Safety warning**

Before powering on your unit, make sure the power outlet it is connected to meets the requirements printed on the warning label on your unit. **This unit must not be installed on the floor.**

**The unit's power plug may be the only way to disconnect the unit from the power network. Therefore you must respect the following:**

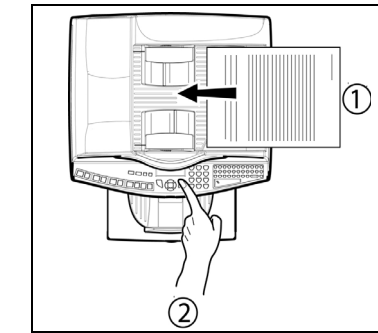
- Your unit must be connected to a power outlet located nearby.
- The power outlet must remain easily accessible.
- Your device is delivered with a grounded power cord. It is imperative to connect a grounded connector to a grounded outlet connected to the building earthing.

**If the machine is powered when you remove the upper cover, be careful with the two following dangers:**

- Laser beam interception by human eye can produce irremediable injuries.
- Human contact with parts electrically powered can produce a very dangerous electric shock.

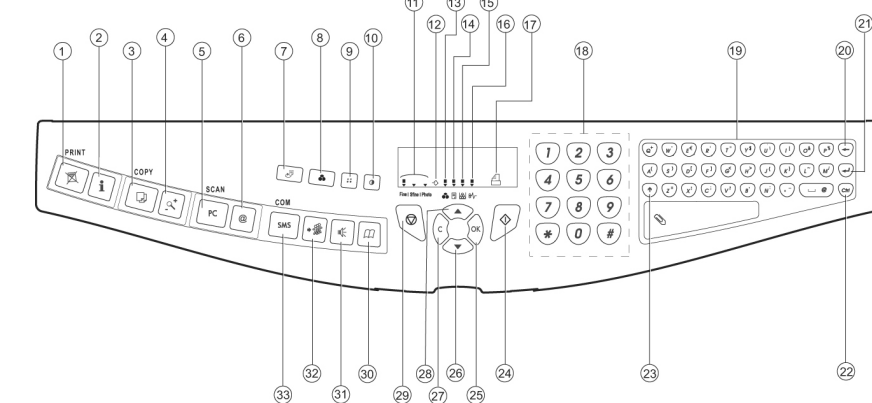
## 11-Sending a facsimile

1. Place your original documents in the document feeder (print side up). The terminal displays **READY**.
2. Enter the subscriber number. Press the **◆** key. Your document is scanned and will be sent to your addressee.



**Note:** It is the same procedure from the flatbed scanner. See the user guide on the CD ROM.

## 12-Console



- |  |   |
|--|---|
| <ol style="list-style-type: none"> <li>1. <b>Ⓢ</b> Key. Stops current printing</li> <li>2. <b>i</b> Key. Help in terminal use.</li> <li>3. <b>☐</b> Key. Local photocopy.</li> <li>4. <b>Ⓢ</b> Key. Reduce or enlarge.</li> <li>5. <b>PC</b> Key. Scan to PC / scan to FTP.</li> <li>6. <b>@</b> Key. Scan to e-mail (send an Internet fax).</li> <li>7. <b>☐</b> Key. Duplex print</li> <li>8. <b>☐</b> Key. Selection of color mode.</li> <li>9. <b>⋮</b> Key. Scan resolution.</li> <li>10. <b>⦿</b> Key. Contrast setting.</li> <li>11. Scan resolution mode (Fine, SFine, Photo).</li> <li>12. <b>↔</b> Icon. Line status. <ul style="list-style-type: none"> <li>* On: communication in progress.</li> <li>* Flashing: communication setting up.</li> </ul> </li> <li>13. <b>☐</b> Icon. Color mode selected.</li> <li>14. <b>☐</b> Indicator. Duplex print status. <ul style="list-style-type: none"> <li>* On: duplex mode activated</li> <li>* Out: duplex mode deactivated.</li> </ul> </li> <li>15. <b>☐</b> Indicator. Toner Status. <ul style="list-style-type: none"> <li>* On: end of toner.</li> <li>* Flashing: near the end of toner.</li> </ul> </li> <li>16. <b>☐</b> Indicator. Printer paper jam.</li> </ol> | <ol style="list-style-type: none"> <li>17. <b>☐</b> Icon. Fax Reception <ul style="list-style-type: none"> <li>* On: reception possible.</li> <li>* Flashing: non-printed document(s) in memory or being received</li> <li>* Off: reception impossible.</li> </ul> </li> <li>18. Digital keyboard.</li> <li>19. Alphabetical keyboard.</li> <li>20. <b>←</b> Key. Deletes the character to the left of the cursor.</li> <li>21. <b>↵</b> Key. Input or line feed.</li> <li>22. <b>Ctrl</b> Key. Access to special characters</li> <li>23. <b>↑</b> Key. Shift.</li> <li>24. <b>◆</b> Key. Send fax.</li> <li>25. <b>OK</b> Key. Validates displayed selection.</li> <li>26. <b>▼</b> Key. Access the menu and move down through the menus.</li> <li>27. <b>C</b> Key. Return to previous menu and correction of text.</li> <li>28. <b>▲</b> Key. Move up through the menus.</li> <li>29. <b>Ⓢ</b> Key. Stops current operation.</li> <li>30. <b>☐</b> Key. Access to directory and quick dial numbers.</li> <li>31. <b>☐</b> Key. Line manual connection, listen for tone during fax sending.</li> <li>32. <b>☐</b> Key. Multiple contact sending (fax, e-mail).</li> <li>33. <b>SMS</b> Key. Send an SMS. <i>This feature is not available.</i></li> </ol> |
|--|---|