

Canon

imageRUNNER®
2230 / 2830 / 3530



CORPORATE
SYSTEMS



imageRUNNER®
2230 / 2830 / 3530

CORPORATE SYSTEMS

ACHIEVE MORE WITHOUT EXHAUSTING YOUR BUDGET.

A new lineup of powerful Canon
multifunction office systems
that can take your business to
a higher level.



Your growing business is unique. You need greater productivity as well as the flexibility to shape office solutions around your specific needs. That's why you need the Canon imageRUNNER 2230/2830/3530 digital multifunction office systems.

Take command of your office productivity, starting with a standard copier configuration, and build a system to meet your printing, scanning, faxing, and document storage needs as your business dictates. The latest ImagePlatform architecture ensures concurrent processing of each task for maximum productivity every time, for every job.

And when the imageRUNNER 2230/2830/3530 devices are fully connected to your network, all users can leverage system capabilities directly from their desktops through intuitively designed drivers—complete with finishing and paper supply functions. All this in an extremely compact, cost-effective system your business can count on.



INTRODUCING THE imageRUNNER 2230/2830/3530

imageRUNNER 2230/2830

With the ability to deliver output at 22 and 28 pages per minute, respectively, the compact imageRUNNER 2230/2830 models are perfect for small businesses and workgroups.



imageRUNNER 3530

At 35 pages per minute, the imageRUNNER 3530 is an ideal solution for busier, medium-size offices and departments within larger corporations.

Feature	Standard Configuration	Available with optional Hard Disk and Additional Memory*
Memory Capacity	RAM: 128MB	RAM: 256MB Hard Disk: 20GB
Copy	Standard	Standard
Mail Box	Optional*	Standard
Network Print	Optional*	Standard (UFR II or UFR II/PCL 5e/6)
Network Scan	Optional*	Standard
Fax	Optional*†	Optional†
eCopy Suite	Optional*	Optional

* Requires additional 20GB Hard Disk and 128MB RAM (ships with the UFR II Printer Kit-E3 and UFR II/PCL Printer Kit-E2).

† Requires the Super G3 Fax Board-Q1 with optional 20GB Hard Disk and additional 128MB RAM to be installed.

A SINGLE DEVICE THAT CAN DO THE WORK OF MANY

In addition to enhancing productivity, the imageRUNNER 2230/2830/3530 devices save space and reduce costs.

Compact, Durable Design

The incredibly compact imageRUNNER 2230/2830/3530 models are built to accommodate busy office environments with limited space. High-yielding supplies and consumables keep running costs and downtime to a minimum for top-notch efficiency. And thanks to an easy-to-load bottle design, toner replenishment is quick and clean.

An optional 50-sheet Duplexing Automatic Document Feeder easily handles multiple-page originals so you can focus on other tasks. The system handles various paper formats, from Statement-R to Ledger, with a maximum paper capacity of 2,250 sheets to keep your business moving. The imageRUNNER 2230/2830/3530 devices also support a range of output options to increase productivity, including an innovative built-in finishing option that offers full sorting, stapling, and optional hole-punching, without taking up any extra space.

Ease-of-Use

The imageRUNNER 2230/2830/3530 models are designed for easy operation at the device through an intuitive touch-screen panel or at a desktop using a Remote UI™** (User Interface) that allows users to control operations via their Web browser. Canon also provides a complete set of device management and monitoring utilities embodied in the NetSpot® Suite. As an ENERGY STAR® qualified system, the imageRUNNER 2230/2830/3530 systems are designed with the environment in mind.

Image of a Leader

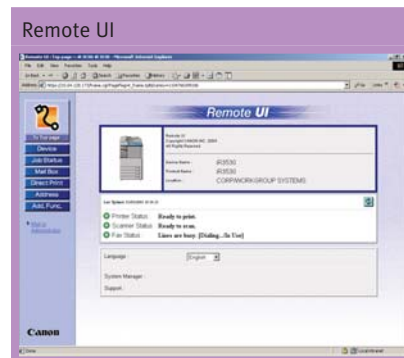
Canon continues to set new standards for quality, performance, and reliability. That's why you can trust Canon to provide you with solutions to make your business more productive and competitive.



Control Panel



Remote UI



** Requires UFR II Printer Kit-E3 or UFR II/PCL Printer Kit-E2.

A FIRST IMPRESSION ALWAYS LASTS.

Make Your Business Stand Out From All the Others.

Produce High-Quality Digital Copies with Confidence

The imageRUNNER 2230/2830/3530 models are designed to make your documents look their best. These systems can capture images at true 600 x 600 dpi resolution and produce high-quality output for both text and images—equivalent to 1200 x 600 dpi for copying and 2400 x 600 dpi for printing, with 256 gradations. Each model hosts a number of productivity-enhancing copy features that save time and money. Standard Automatic Duplexing provides two-sided printing to conserve time and paper. Also, with Canon's RAPID Fusing System™, warm-up times and energy consumption costs are kept to a minimum.

A Multifunctional Delight

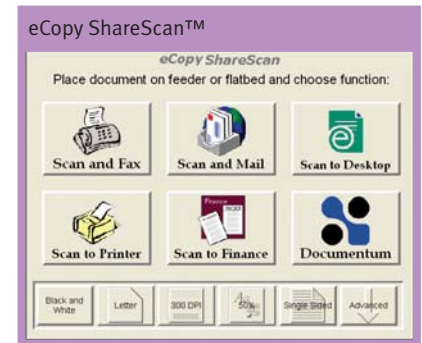
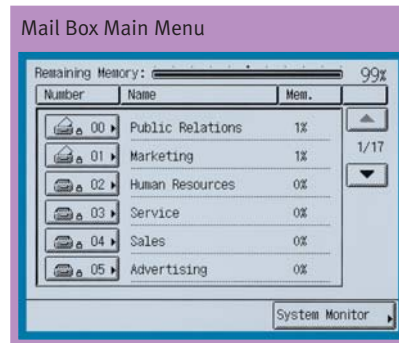
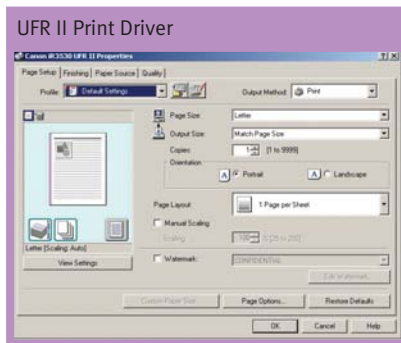
The imageRUNNER system, when equipped with an optional printer kit, is transformed into a productive multifunction device that can greatly improve your workflow. As networked printers, the imageRUNNER 2230/2830/3530 devices support the latest Canon Ultra Fast Rendering II (UFR II) technology for fast document processing, and available support for popular PCL 5e/6* page description languages. And with the Canon

Network ScanGear utility** you can easily integrate scanned images with your documents using TWAIN-compatible software.

Innovative Mail Box features** provide the ability to store scanned documents and printed files directly into device memory for later use. Each Mail Box can be customized and password-protected for complete confidentiality.

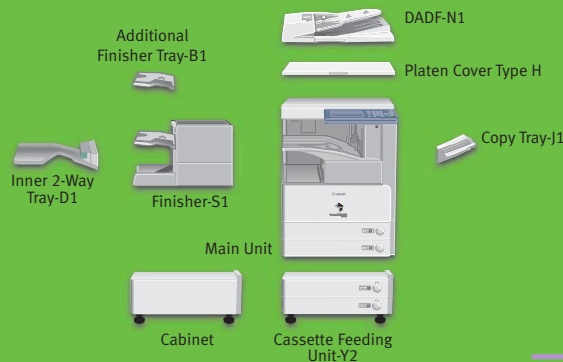
Powerful Document Distribution

The imageRUNNER 2230/2830/3530 systems can handle all your heavy-duty faxing needs when equipped with the optional Super G3 Fax Board.** Time-saving features include a high-capacity address book and auto-dialing to speed operation, as well as PC Fax capabilities that allow you to transmit fax documents easily from a networked computer. For even greater document distribution needs, you may configure the system with the powerful eCopy suite** of products that link the device to your company's e-mail and networked enterprise applications for secure, paperless distribution and management of data.



* Not available at the time of launch. Check with your local Authorized Canon Dealer for availability.

** Requires UFR II Printer Kit-E3 or UFR II/PCL Printer Kit-E2.



imageRUNNER®
2230 / 2830 / 3530

imageRUNNER 2230/2830/3530 Specifications

Type:	Digital, Multifunction Imaging System
Imaging System:	Laser Dry Electrostatic Transfer
Developing System:	Dry Mono Component Developing System
Fixing System:	RAPID Fusing System
Image Server Memory	
Standard:	128MB RAM
Optional:	256MB RAM/20GB HDD
First-copy Time	
imageRUNNER 2230/2830:	4.9 Seconds from Platen Glass
	6.9 Seconds from Feeder
imageRUNNER 3530:	3.9 Seconds from Platen Glass
	5.9 Seconds from Feeder
Warm-up Time:	10 Seconds or Less from Sleep Mode
	15 Seconds or Less from Main Power Off
	30 Seconds or Less from Main Power Off when configured with either printer kit
	22/28/35 ppm (Letter)
Copy/Print Speed:	5 Jobs
Max. Copy Reservation:	600 dpi x 600 dpi
Actual Resolution:	1200 dpi x 600 dpi (Copy)
Interpolated Resolution:	2400 dpi x 600 dpi (Print)
Halftone:	256 Gradations of Gray
Duplexing:	Standard Automatic Trayless Duplexing
Magnification Reduction/Enlargement:	25% to 400%—Platen
	25% to 200%—Feeder
	(in 1% increments)
Exposure Control:	Automatic or Manual (9 Levels)
Paper Sources	
Standard:	Dual 550-sheet Paper Cassettes (1,100 Sheets)
	Stack Bypass (50 Sheets)
Optional:	Dual 550-sheet Cassette Feeding Unit (2,250 Sheets Max.)
	1 to 999
Multiple Copies:	17 lb. to 20 lb. Bond (Cassette)
Paper Weights:	17 lb. to 32 lb. Bond (Stack Bypass)
Network Interface	
Connections:	10/100Base-T (RJ-45)
Dimensions (H x W x D):	29-7/8" x 22-1/4" x 27-5/8" (761mm x 565mm x 700mm)
Installation Space: (W x D):	34" x 27-5/8"
Weight:	152 lb. (69kg)
Power Requirements:	120V AC, 60Hz, 8A (2270/2870)
	120V AC, 60Hz, 10A (3570)
Power Consumption:	1.35kW (Max.)

Drum:	Organic Photo Conductor (OPC)
Estimated Yield:	75,000 Impressions (2230/2830)
	85,000 Impressions (3530)
Toner Yield:	21,000 @ 6% Coverage (2230/2830)
	24,000 @ 6% Coverage (3530)

Optional Accessories

Duplexing Automatic Document Feeder-N1

Acceptable Originals:	Statement to 11" x 17"
Capacity:	50 Sheets (20 lb. Bond/Letter)
Max. Paper Weight:	13 lb. to 32 lb. Bond

Cassette Feeding Unit-Y2

Paper Capacity:	Dual 550-sheet Paper Cassettes (1,100 Sheets/20 lb. Bond)
Acceptable Paper Sizes:	Statement-R to 11" x 17"
Acceptable Paper Weights:	17 lb. to 20 lb. Bond

Inner 2-Way Tray-D1*

Number of Trays:	2 Trays
Tray Capacity	
Lower Output Tray:	250 Sheets (Letter)
	100 Sheets (Other Sizes)
Upper Output Tray:	100 Sheets (Letter)
	50 Sheets (Other Sizes)
Acceptable Paper Sizes:	Statement to 11" x 17"
Attachable Accessories:	Copy Tray-J1

Finisher-S1*

Number of Trays:	1 Tray (Second Tray Optional)
Tray Capacity	
Non-collate, Collate, Group Mode:	1,000 Sheets (Letter, Statement)
Staple Mode:	1,000 Sheets/30 Sets
Tray Capacity (with Additional Finisher Tray-B1)	
Non-collate, Collate, Group Mode:	300 Sheets per Tray (Letter, Statement)
Staple Mode:	300 Sheets/30 Sets per Tray (Letter)
	150 Sheets/30 Sets (Legal, 11" x 17")
Corner Stapling (11" x 17", Legal, Letter, Letter-R)	
Max. Stapling Capacity (Up to 20 lb. Bond):	50 Sheets (Letter)
Attachable Accessories:	Additional Finisher Tray-B1
	Puncher Unit-R1
	Copy Tray-J1

Copy Tray-J1 (option for Inner 2-Way Tray and Finisher-S1)	
Tray Capacity:	150 Sheets (Letter)
	75 Sheets (All Other Sizes)

Super G3 Fax Board-Q1

Applicable Line:	Public Switched Telephone Network (PSTN)
Connection Lines:	One

Sending/Original Sizes:	Statement to 11" x 17"
-------------------------	------------------------

Recording/Printing Sizes:	Statement to 11" x 17"
---------------------------	------------------------

UFR II Printer Kit-E3, UFR II/PCL Printer Kit-E2**

Processor:	Canon Custom Processor—Shared
RAM:	256MB—Shared
Hard Disk:	20GB—Shared

PDL Support

UFR II Printer Kit-E3:	UFR II
UFR II/PCL Printer Kit-E2:	UFR II/PCL

Interface Connections

Standard:	10/100 Base-T (RJ-45), USB 2.0 High-speed
Optional:	Wireless LAN**

Network OS:

Windows® 98/Me*	
Windows 2000/XP	
Windows NT® 4.0*/Server 2003	
Solaris™ OS 10.1.5 or Later (PPD)	
Solaris™ 1.1x, 2.5x, or Later	
Novell® NetWare® v3.2, 4.1, 4.11, 4.2, 5, 5.1, 6, 6.5 (IPX/SPX™)	

Additional Optional Accessories and Utilities

Platen Cover Type H
Puncher Unit-R1
Cabinet
Envelope Feeder Attachment-C1
Accessibility Handle-A1
Braille Label Kit-A1
Document Tray-J1
Card Reader-C1
Card Sets
imageRUNNER Security Kit-A2
eCopy Suite
Wireless LAN Kit††
Removable HDD Kit††

* Requires 3-Way unit.

** Not available at time of launch. Check with your local Authorized Canon Dealer for availability.

† UFR II not supported.

© 2005 Canon U.S.A., Inc. All rights reserved.

As an ENERGY STAR® Partner, Canon U.S.A., Inc. has determined that these products meet the ENERGY STAR® guidelines for energy efficiency. ENERGY STAR and the ENERGY STAR certification mark are registered U.S. marks. eCopy ShareScan is a trademark of eCopy, Inc. Windows and Windows NT are registered trademarks of Microsoft Corporation in the United States and/or other countries. Macintosh is a registered trademark of Apple Computer, Inc. Solaris is a trademark of Sun Microsystems, Inc. in the United States and other countries. Novell and NetWare are registered trademarks of Novell, Inc. in the United States and/or other countries. IPX/SPX is a trademark of Novell, Inc. Canon, IMAGERUNNER, NetSpot, and Canon Know How are registered trademarks, and RAPID Fusing System and the GENUINE logo are trademarks of Canon Inc. in the United States and may also be registered trademarks or trademarks in other countries. Remote UI is a trademark of Canon U.S.A., Inc. IMAGEANYWARE is a service mark of Canon U.S.A., Inc. in the United States. All other terms and product names may be trademarks or registered trademarks of their respective owners and are hereby acknowledged.

All specifications are subject to change without notice.

Machines shown with optional accessories/equipment.

0050W198

0205-22/28/35-50M-PGK

PRINTED ON RECYCLED
PAPER IN THE U.S.A.



Canon KNOW HOW®

1-800-OK-CANON
www.usa.canon.com

Canon U.S.A., Inc.
One Canon Plaza
Lake Success, NY 11042