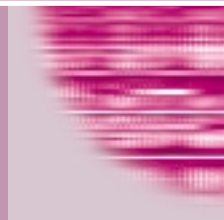
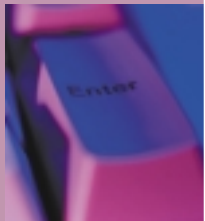
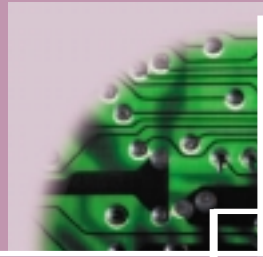
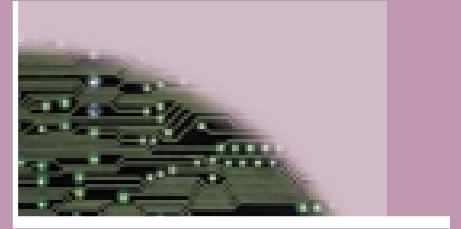


Canon

imageRUNNER™
8500



imageRUNNER™
8500



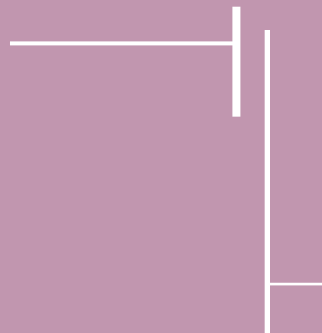
THE HIGH-VOLUME DIGITAL PRODUCTION SYSTEM OFFERING UNMATCHED SPEED, PERFORMANCE, RELIABILITY, AND DOCUMENT-FINISHING CAPABILITIES

In order to be successful in the high-volume, Print-on-Demand environment, a device must consistently deliver high levels of output while maintaining excellent image quality and machine reliability—day in and day out. Introducing the imageRUNNER™ 8500 Networked Production System...a high-volume, high-performance networked printing solution engineered to deliver the utmost in productivity.



Operating at a fast 85 pages per minute, delivering the highest output quality in its class, and offering one of the most robust digital engines in Canon's current product line, the imageRUNNER 8500 can meet the demands of high-volume copying and distributed printing with ease. Add to that the imageRUNNER 8500's extensive finishing capabilities, and you have the ideal solution for today's production environments.

So, whether you're looking for a digital replacement for a high-volume analog copier, wish to upgrade your existing digital device to a more robust digital engine, or simply want to increase your enterprises' overall productivity, the imageRUNNER 8500 is the premier device for high-performance multifunctionality.



digital

Whether your primary function is copying, printing, or scanning, the imageRUNNER 8500's advanced feature set makes even the most complex jobs simple.



Designed with the End-user in Mind

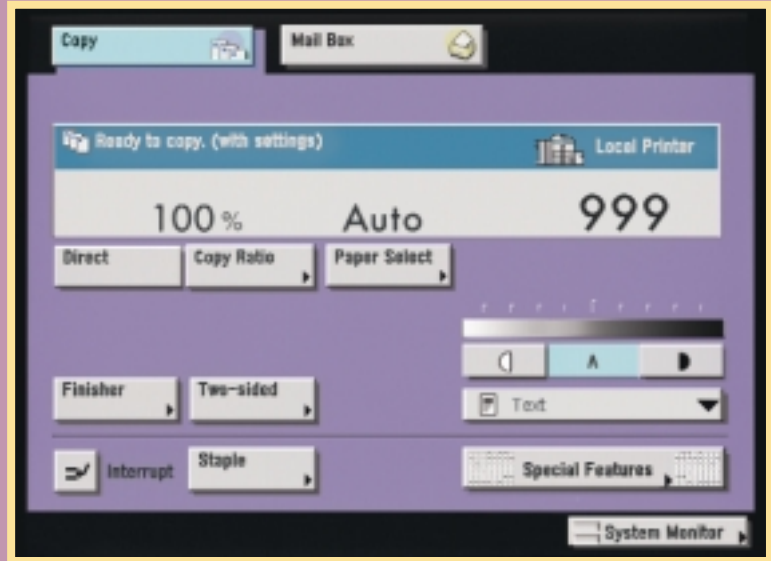
The imageRUNNER 8500 builds upon the award-winning design of Canon's current digital product line, offering a consistent user-interface while also introducing several new capabilities to enhance document workflow. With the ability to support network printing, copying, and both local and network scanning,* the imageRUNNER 8500 can help you manage all your information capture, storage, and distribution needs. And because it's a network-connected device, users can just as easily leverage system capabilities from their desktops as they can from the main unit.

Fast to the Finish

In today's fast-paced business environment, there is no such thing as too fast. The imageRUNNER 8500 pushes the

envelope when it comes to speed, delivering both copies and prints at a quick 85 impressions per minute. Unlike competitive devices, the imageRUNNER 8500 does not slow down when performing advanced functions such as duplexing, stapling, and hole-punching. Finished documents are continuously output at the machine-rated speed of 85 impressions per minute, providing significant productivity gains to your operation. Scanning, which results in a notable decrease in speed in most competitive units, is achieved at a remarkable 80 pages per minute on the imageRUNNER 8500—the fastest scanning speed of any multifunction device in the world.

*Network scanning available second half 2001. Check with your local Canon-authorized Dealer for details.



A newly designed 7.8-inch color touch-sensitive LCD Control Panel makes the imageRUNNER 8500 extremely easy to operate.

Outstanding Image Quality

The imageRUNNER 8500 delivers the exceptional image quality Canon customers have come to expect. With 600 x 600 dpi resolution that is interpolated to 1200 x 600 dpi resolution for copying, and 2400 x 600 for printing, you can always count on getting the sharpest image possible.

Feeder (SADF). Original sets that contain multiple paper sizes can be placed in the ADF for scanning provided that all pages have the same leading-edge width. The SADF is ideal for making copies of heavy- or light-weight originals that should not be subject to the bending that occurs inside the ADF.

Impressive Input

The imageRUNNER 8500 ships standard with a 100-sheet Automatic Document Feeder (ADF) designed to deliver high levels of productivity. Accepting both simplex and duplex originals in sizes up to 11" x 17," and in weights up to 110 lb. Index stock, there is little this document feeder can't handle. To meet the diverse copying needs of high-volume environments, the ADF also offers a Different Size Originals Mode and a Semi-automatic Document

Versatile Paper Supply

The imageRUNNER 8500 has a standard paper supply of 4,150 sheets, enabling it to handle most long-run, continuous jobs. Still need more? The optional 3,500-sheet Side Paper Deck-M1 can be added, increasing overall paper capacity to an unbelievable 7,650 sheets. Automatic paper tray switching and on-the-fly paper reloading further optimize production throughput.



Standard 100-sheet Automatic Document Feeder.

With up to six on-line paper sources available at a time, users have the flexibility to select a number of output choices. The imageRUNNER 8500 handles paper sizes from statement to 11" x 17," and offers support for specialty stock such as labels, transparencies, and tab paper. It also accepts paper weights from 17 lb. Bond to 110 lb. Index stock from every on-line paper source—a significant advantage for jobs requiring heavy covers or inserts. With its generous paper supply, large number of paper sources, and wide range of acceptable paper weights, sizes, and stocks, the imageRUNNER 8500 is capable of performing just about any job you can dream up.

The Ultimate Saver of Time, Money, and Space

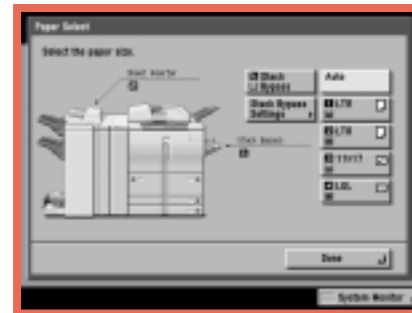
In addition to its fast operating speed, the imageRUNNER 8500 is up and ready to go

within minutes. With a warm-up speed of six minutes or less, and an incredibly fast first-copy speed of 2.9 seconds from the platen glass and 4.3 seconds from the document feeder, you won't waste time waiting for your job to begin. A long-lasting, five-million-impression amorphous silicon drum also saves users time and money through less frequent replacement. And while most high-volume production units carry a footprint to match, the imageRUNNER 8500 is surprisingly compact compared to competitive offerings, a significant advantage for locations where space is at a premium.

What's more, every primary component of the imageRUNNER 8500's main unit is fully accessible from the front, so if jam clearance and supply replenishment is required, you can do it quickly and easily.



The 50-sheet Stack Bypass is a convenient source for feeding specialty stock.



The imageRUNNER 8500's graphical control panel makes paper selection simple.



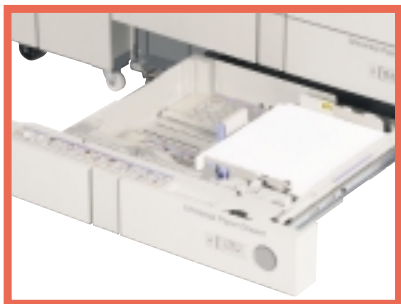
The imageRUNNER 8500's generous paper supply can handle most long-run jobs.

productivity

Innovative Capabilities to Help You Work Smarter



Produce professionally finished documents, including tabs, color covers, and insert pages.



The imageRUNNER 8500 supports tab stock in its lower two paper trays.



Users can select whether to insert blank or printed tab paper into finished documents.

Raising the Bar for Document Output

Large documents, such as presentations, proposals, and annual reports, are common to high-volume environments. To facilitate, the production of jobs with high original page-counts, the imageRUNNER 8500 offers a 10GB Internal Image Server as standard. This Hard Disk Drive hosts several unique applications that set new standards for production-level output, and allow you greater flexibility and versatility in document output and overall information management. Examples of this functionality include:

Confidential Mail Boxes –

The imageRUNNER 8500 supports the creation of up to 100 individual Mail Boxes. Each box can store up to 100 items, with a maximum document storage capacity of 7,700 pages. Mail Boxes can be used to accept scanned and printed data, permitting users to easily combine paper and electronic information.

Scan-Once-Print-Many and Automatic Page Orientation – Minimizes scanner wear and tear while rotating scanned pages to match the direction of the available paper supply.

Automatic Page Imposition – Automatically imposes pages in correct order for the creation of saddle-stitched booklets.

Copy Reservation – Allows users to store up to five copy jobs in memory while current copy or print jobs are being processed.

Job Build – Permits the building of jobs from disparate originals, easily integrating documents scanned through the document feeder with those directly placed on the glass.

SmartScan Page Recognition –

Automatically recognizes if a scanned page has been fed incorrectly, and corrects the orientation upon output.

Chapterization – Supports the creation of chapters when copying books and other materials requiring these types of separations.

Tab Copying and Insertion – Enables users to create banks of tabs for later collation, or have printed tabs automatically inserted into the body of a document.

Finishing Capabilities that Make You Shine

Your finished documents are representative of your business and, as such, should be as professional-looking as possible. The imageRUNNER 8500's extensive finishing capabilities are designed to handle the most common high-volume copying and printing applications, such as booklets, training manuals, handbooks, policy statements, and more.

The imageRUNNER 8500's optional Finisher-K1 and Punch Finisher-K2 offer two trays to manage output sizes of statement to 11" x 17". Up to 3,000 sheets can be accommodated, enough to effectively handle even the longest print or copy runs. Additionally, both Finishers can staple up to 100 sheets in any corner of the page, or place two staples in either the left- or right-hand margin. The Punch Finisher-K2 also offers hole-punching capability, as well as stapling. Output can be automatically two- or three-hole punched, depending on paper size and orientation.

If your finishing requirements are more extensive, the Saddle Finisher-K3 is another available option. Like the Finisher-K1 and Punch Finisher-K2, the Saddle Finisher-K3 holds a maximum of 3,000 sheets in two trays. It offers 100-sheet single- and double-position stapling, two- and three-hole punching, as well as saddle-stitched booklet-making as standard. The Saddle Finisher-K3 can also be equipped with an optional Document Inserter-B1 and the Paper Folding Unit-C1. The Document Inserter-B1 allows preprinted stock to be merged with finished documents post-process. The Paper Folding Unit-C1 Z-folds 11" x 17" documents so that they fit neatly within letter-sized output.



The Finisher-K1 offers multiple-position stapling as standard.



Up to 60-page booklets can be produced on the Saddle Finisher-K3.



The Saddle Finisher-K3 offers stapling, hole-punching, and saddle-stitch booklet-making.



The optional Document Inserter-B1 allows users to incorporate preprinted covers and inserts into output.

Connectivity Without Complications

documents. Through Canon's print controller, output is delivered at the rated print engine speed, thereby allowing users to experience the enhanced productivity and functionality of digital technology over analog. And with the ability to upgrade imageRUNNER 8500 functionality to include printing and scanning at a later date, you can configure the device to handle the document-management needs of your organization over time.

A Tradition of Excellence

Canon pioneered connecting digital multifunction devices to networks back in 1994. Since then, we continue to be the only vendor to deliver network connectivity at the time a product is launched. So, while other vendors are making promises about their networked capabilities, Canon is delivering them.

Like its Canon predecessors, the imageRUNNER 8500 carries on Canon's networking tradition. imageRUNNER 8500 customers can select both copying and printing capabilities at the time of their initial purchase, or they can add network printing capabilities later on.

Point-and-click Operation

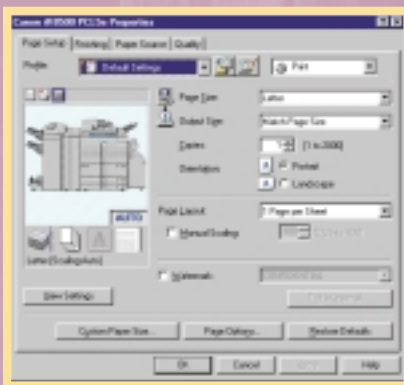
One of the reasons why Canon has become the leading provider of network-connected systems in the marketplace today is because of its intuitive printer driver software. imageRUNNER 8500 users will find that Canon's graphical printer driver software is extremely easy to use, even if they have had no prior experience using a network-connected device. Through the printer driver software, users have immediate access to all imageRUNNER 8500 output functions directly from their desktops. A dynamic image of the installed imageRUNNER 8500 is displayed on the screen and indicates all available hardware options, paper sizes, and paper levels. If these attributes change over the course of the day, the driver is updated to reflect the changes so that users are aware of the latest device capabilities.

The Ideal Solution for Production-level Environments

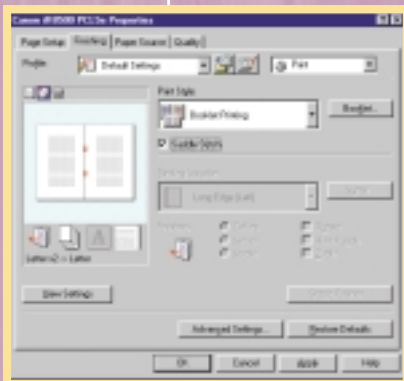
The imageRUNNER 8500 is ideally suited for volume-intensive departments, corporate in-plants, print-for-pay outlets, and digital service bureaus. With a print controller capable of handling 10/100 Ethernet or Token Ring connections, and PostScript® 3 Emulation and PCL® 6 print languages, the imageRUNNER 8500 can meet the needs of the most demanding production environments.

Canon's latest print controller design leverages the unit's Internal Image Server and memory structure, ensuring rapid first-page-out times, and quick and efficient printing of common office

More advanced capabilities of the driver include the ability to save frequently used print job parameters, insert document annotations such as names, dates, etc., add watermarks, and send sensitive or confidential documents to the imageRUNNER 8500 as a Secured Print so that it will not be output until the user enters a password at the device control



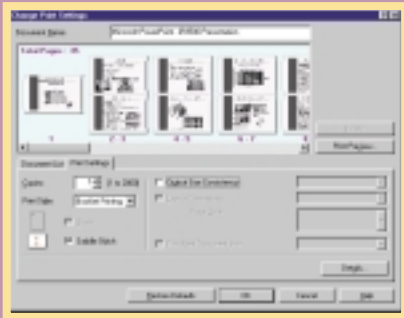
Driver Page Setup Tab



Users have access to all imageRUNNER 8500 finishing functions from their desktops.

panel. Using Canon's Page Composer, imageRUNNER 8500 users can also view page layout of a document from within the driver prior to printing to insure that their output will print as expected.

Multiple installation methods for the imageRUNNER 8500 print driver are available for the network administrator. Canon's printer driver software is the only one on the market capable of discovering devices on the network, allowing administrators to select imageRUNNER 8500 devices and automatically configure their equipped options with just a click of the mouse.



Canon's Page Composer is a make-ready tool allowing users to review and manipulate documents before printing.

Manage Information Regardless of Form

As the widespread use of electronic-based information continues to grow, office devices need to be able to easily integrate both hard-copy and electronic documents. Through its scanning capabilities, the imageRUNNER 8500 is up to the task. Users can scan documents locally to the imageRUNNER 8500 internal Mail Boxes, or over the network (network print option required) using Canon's virtual TWAIN driver. In addition, customers can leverage any TWAIN-compliant software application to drive the imageRUNNER 8500 for specific network scanning and workflow requirements.

Universal Send™

Information Sharing Without Limits

In addition to its basic local and network scanning capabilities, the imageRUNNER 8500 can be upgraded to add Canon's new Universal Send feature. Using Universal Send, hard-copy documents can be scanned at the device and "pushed" to MULTIPLE destinations using MULTIPLE formats in ONE simple operation.

Send as an E-mail – Send scanned documents as E-mail attachments in TIFF, multipage TIFF, or PDF.

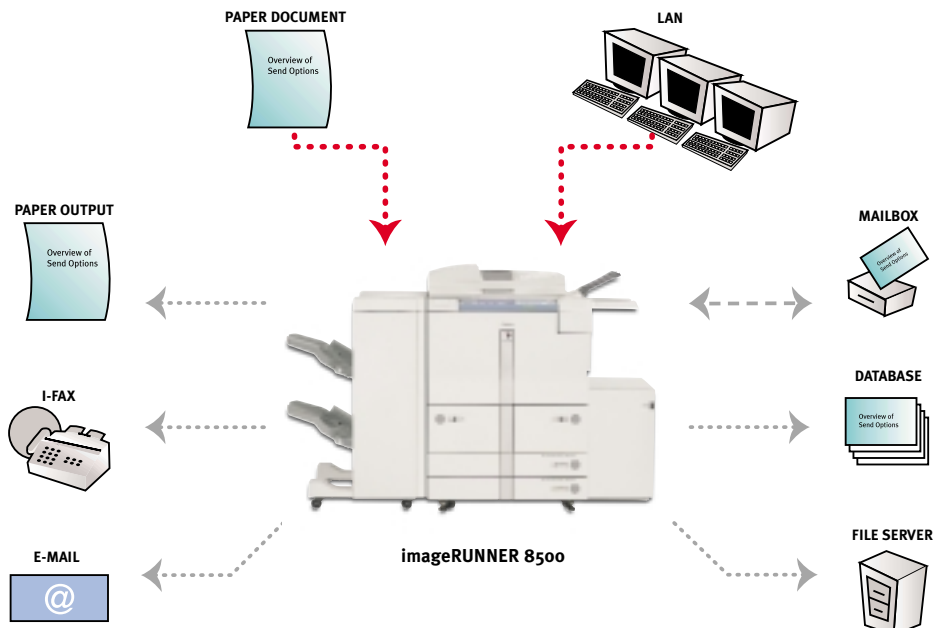
Send as an Internet Fax – Bypass the PSTN and send scanned documents over the Internet as fax transmissions at no cost.

Send to a File Server – Store scanned data in a centralized directory for archival purposes or sharing within workgroups (FTP, Windows®, NetWare®).

Send to a Mail Box – Organize and archive digital information in 100 Mail Boxes. Store files for sharing, merging, printing, or sending at a later time.

Send to a Database – Use for automatic data collection and to eliminate redundant data entry and errors.

The advanced functions of Universal Send allow users to communicate, manage, and share information as never before, and require no special server or additional software. What's more, Universal Send works simultaneously with the imageRUNNER 8500's Print and Copy functions for enhanced multitasking.



high-volume

Canon's NetSpot® Suite

NetSpot Job Monitor – To manage and track the progress of print jobs, Canon supplies NetSpot Job Monitor. NetSpot Job Monitor runs as an automated task in the Windows® System Tray, and can be configured to report job conditions based on administrator or end-user preferences. Significant to NetSpot Job Monitor is its ability to deliver end-of-job notification to end-users, ensuring that they are always informed of the completion of submitted work.

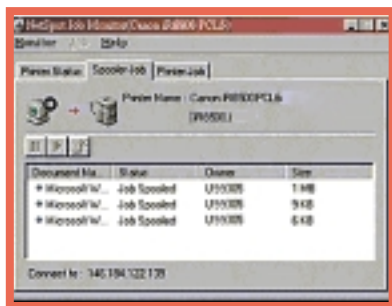
NetSpot Accountant* – NetSpot Accountant is an optional utility available for the imageRUNNER 8500 that is capable of providing comprehensive job tracking and analysis for cost accounting and workflow optimization. Using NetSpot Accountant, network administrators can track all activity at the imageRUNNER 8500, including copying, printing, and scanning, and billing internal or external clients for device utilization. A wide range of configuration settings are available for NetSpot Accountant, enabling administrators to track device usage in a myriad of ways. NetSpot Accountant is ideal for legal customers, or any customer who desires to account for imageRUNNER 8500 device utilization.

Enterprise-management Integration – In addition to the NetSpot utilities mentioned, Canon also supplies plug-in modules for the most popular enterprise-management applications in use today. Supported applications include Microsoft® Management Console, CA-Unicenter, HP OpenView, Tivoli NetView, and BMC Patrol. Through these plug-ins, Canon permits easy management of imageRUNNER 8500 and other Canon networked devices from directly within the enterprise-management system console.

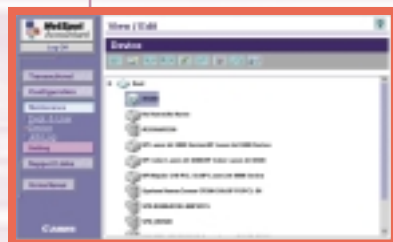
Connectivity Software Simplified

Like all Canon networked systems, the imageRUNNER 8500 comes equipped with a comprehensive set of system utilities designed to simplify operation and management for both end-users and network administrators. Through these tools, Canon eases device installation and network management while supplying a level of device status and job-management capabilities unmatched in the industry. Canon's NetSpot Suite consists of the three utilities outlined below:

NetSpot Console – NetSpot Console is a web-based utility capable of installing and managing Canon networked systems, including the imageRUNNER 8500, on most customer networks. Through NetSpot Console, network administrators are provided a convenient, platform-independent utility to install and manage Canon devices from anywhere within the enterprise. In addition to basic installation support, NetSpot Console also delivers administrator alerts, notifying administrators of device status conditions such as low toner, paper jams, and others. For added convenience, NetSpot Console is also capable of managing third-party printers complying with the standard Printer MIB, thereby consolidating network device management via one utility.



NetSpot Job Monitor Spooler Job Tab



NetSpot Accountant Device List Display

*Available second half 2001. Check with your local Canon-authorized Dealer for details.

Remote UI

The imageRUNNER 8500 ships standard with Canon's Remote User Interface feature. The Remote UI feature makes it possible for users to access device status and configuration, job status, address books, and more simply by entering the IP address of the device using a standard web browser. Users can stop, start, or reprint jobs, send images stored in mail boxes, even operate unique SEND functions for previously stored documents all from a desktop PC, with no additional software requirements.

An Impressive Line-up



The imageRUNNER 8500 joins an already impressive line-up of Canon digital multifunction products ranging in speed from 16 to 110 pages per minute.

Canon's pioneering efforts in creating the digital multifunction marketplace have provided us with a considerable advantage in identifying emerging customer needs. Our past experience, combined with our huge ongoing commitment to research and development, has allowed us to assume a commanding position in today's office and production environments.

Our goal is simple: To provide you with the best solutions to your document and information-management needs.

When considering the imageRUNNER 8500's 85-page-per-minute speed, high image quality, extensive document finishing, and seamless integration into customer networks, we think you will agree that the imageRUNNER 8500 is a solution that truly stands apart from other competitive offerings in this segment, and one that will clearly enable you to achieve greater levels of productivity, efficiency, and competitive advantage.

volume





imageRUNNER™
8500

imageRUNNER 8500 Specifications

Type: Digital, Multifunction Imaging System
 Imaging System: Laser Dry Electrostatic Transfer
 Developing System: Dry Monocomponent Toner Projection
 Image Server Memory: Standard 396MB RAM + 10GB HDD
 First-copy Time: 2.9 Seconds from Platen Glass
 4.3 Seconds from ADF
 Warm-up Time: 6 Minutes or Less
 Acceptable Originals: Sheets, Books, 3-Dimensional Items (Up to 4.4 lb.)
 Max. Original Size: 11" x 17" (Ledger)
 Max. Copy Size: 11" x 17" (Ledger)
 Min. Copy Size: 4-1/8" x 5-7/8"
 Max. Mail Boxes Supported: 100
 Max. Copy Reservation: 5 Jobs
 Copy/Scanning Resolution: 600 dpi x 600 dpi
 1200 dpi x 600 dpi Interpolated
 Printing Resolution: 600 dpi x 600 dpi
 2400 dpi x 600 dpi Interpolated
 Halftone: 256 Gradations of Gray
 Copy Speed: 85 cpm (Letter)
 42 cpm (Ledger)
 Duplexing: Standard Automatic Trayless
 Duplexing
 Magnification Reduction/
 Enlargement: 25% to 400% in 1% Increments
 Paper Supply
 Standard: Dual Front-loading Trays (1,500 Sheets Each)
 Dual Front-loading Cassettes (550 Sheets Each)
 50-sheet Stack Bypass
 3,500-sheet Paper Deck (Total: 7,650 Sheets)
 Optional:
 Multiple Copies: 1 to 999
 Paper Weights: 17 lb. Bond to 110 lb. Index (All Trays, Cassettes, and Bypass)

Supplies
 Drum: Amorphous Silicon – Estimated Yield: 5,000,000 Impressions
 400,000 Impressions per Month
 Maximum Duty Cycle: 400,000 Impressions per Month
 Toner: Magnetic Negative Toner – Estimated Yield: 36,600 Images (at 6% Coverage)

ACCESSORIES

Automatic Document Feeder
 Acceptable Originals: Statement to Ledger
 Scanning Speed: 80 ppm (Letter)
 Capacity: 100 Sheets (All Sizes/20 lb.)
 Paper Weights: 13 lb. Bond to 110 lb. Index
Finisher-K1 (Optional)
 Number of Trays: 2 Trays
 Tray Capacity
 Top Tray: 1,000 Sheets (All Sizes)
 Offset Stacking
 Lower Tray: 2,000 Sheets (Letter)
 1,000 Sheets (11" x 17", Legal)
 Offset Stacking
 Staple Position: 1 - Any Corner
 2 - Side Margin
 Max. Stapling Capacity: 100 Sheets (Letter/Statement)
 50 Sheets (Letter-R/Legal/11" x 17")
Punch Finisher-K2 (Optional)
 Number of Trays: 2 Trays
 Tray Capacity
 Top Tray: 1,000 Sheets (All Sizes)
 Offset Stacking
 Lower Tray: 2,000 Sheets (Letter)
 1,000 Sheets (11" x 17", Legal)
 Offset Stacking
 Staple Position: 1 - Any Corner
 2 - Side Margin
 Max. Staple Capacity: 100 Sheets (Letter/Statement)
 50 Sheets (Letter-R/Legal/11" x 17")
 Hole-punch: 3 Holes (11" x 17", Letter)
 2 Holes (Legal, Letter-R)
Saddle Finisher-K3 (Optional)
 Number of Trays: 3 Trays
 Tray Capacity
 Top Tray: 1,000 Sheets (All Sizes)
 Offset Stacking
 Lower Tray: 2,000 Sheets (Letter)
 1,000 Sheets (11" x 17", Legal)
 Offset Stacking
 Saddle-stitch Tray: 30 Sets
 Hole-punch: 3 Holes (11" x 17", Letter)
 2 Holes (Legal, Letter-R)
 Staple Position: 1 - Any Corner
 2 - Side Margin

Max. Stapling Capacity: 100 Sheets (Letter/Statement)
 50 Sheets (Letter-R/Legal/11" x 17")
 Saddle-stitch Capabilities
 Saddle-stitch Paper Sizes: 11" x 17", Letter
 Stapling Capacity: 15 Sheets (60 Pages)
 Folding: V-folding Standard
Side Paper Deck-M1
 Paper Capacity: 3,500 Sheets
 Paper Size: Letter
 Paper Weights: 17 lb. Bond to 110 lb. Index
Document Inserter-B1**
 Paper Sizes: Letter-R to 11" x 17"
 Paper Weights: 17 lb. Bond to 110 lb. Index
 Feeder Capacity: Letter, Letter-R: 100 Sheets
 Legal, 11" x 17": 50 Sheets
Paper Folding Unit-C1**
 Paper Sizes: 11" x 17" Only
 Paper Weights: 17 lb. Bond to 22 lb. Bond
 Fold Type: Z-fold
Network Multi PDL Printer Kit-B1 (Optional)
 PDL Support: PCL® 5e, PCL® 6
 PostScript® 3 Emulation
 Internal Fonts: 136 PostScript Fonts
 117 Adobe® Type Fonts
 19 TrueType® Fonts
 80 PCL Roman Fonts
 32 PCL Bar-code Fonts
 Interface Connections: RJ-45 (to/100 Base-T)
 IEEE 1284
 Token Ring* (Optional Card)
 IPX/SPX™: 802.2, 802.3,
 Ethernet II, 802.2 SNAP
 TCP/IP
 SMB
 AppleTalk®: 802.2 SNAP and
 AppleTalk Phase II Only
 Network OS: Novell® NetWare® v.3.2, 4.1, 4.11,
 4.2, 5 (IPX/SPX)
 Windows® 95, 98 (TCP/IP)
 Windows NT® 4.0 (TCP/IP)
 Windows® 2000 (TCP/IP)
 Solaris™ 1.x, 2.5 or Later (TCP/IP)
 Apple System 7.5 or Higher (DDP)

Dimensions Table	Dimensions (H x W x D)	Weight	Power
imageRUNNER 8500 Main Unit	44-3/4" x 30-1/8" x 31-3/8" (1,137mm x 764mm x 795mm)	617 lb. (280kg)	208V, 60Hz, 13A
Finisher-K1	39-1/4" x 26-1/4" x 27-7/8" (995mm x 667mm x 708mm)	141 lb. (64kg)	Directly from Main Unit
Punch Finisher-K2	39-1/4" x 26-1/4" x 27-7/8" (995mm x 667mm x 708mm)	145 lb. (66kg)	Directly from Main Unit
Saddle Finisher-K3	39-1/4" x 31-5/8" x 29-1/8" (995mm x 803mm x 738mm)	279 lb. (127kg)	Directly from Main Unit
Side Paper Deck-M1	22-5/8" x 12-3/4" x 23" (574mm x 323mm x 583mm)	90.3 lb. (41kg)	Directly from Main Unit
Document Inserter-B1	5-5/8" x 22-1/8" x 23" (with Auxiliary Tray Opened) (144mm x 561mm x 583mm)	35.2 lb. (16kg)	Directly from Main Unit
Paper Folding Unit-C1	39-1/4" x 7-1/4" x 26-5/8" (995mm x 184mm x 675mm)	108 lb. (49kg)	Directly from Main Unit

*Check with your local Canon-authorized Dealer for availability.
 **The Document Inserter-B1 and the Paper Folding Unit-C1 can only be used with the Saddle Finisher-K3.

Canon KNOW HOW™

1-800-OK-CANON
 www.usa.canon.com

Canon U.S.A., Inc.
 One Canon Plaza
 Lake Success, NY 11042

As an ENERGY STAR® Partner, Canon U.S.A., Inc. has determined that this product meets the ENERGY STAR® guidelines for energy efficiency. The ENERGY STAR name is a registered trademark of the U.S. Environmental Protection Agency. PCL is a registered trademark of Hewlett-Packard Company. Adobe and PostScript are trademarks of Adobe Systems Incorporated. Windows and Windows NT are registered trademarks of Microsoft Corporation. AppleTalk and TrueType are registered trademarks of Apple Computer, Inc. Novell and NetWare are registered trademarks and IPX/SPX is a trademark of Novell, Inc. in the United States and other countries. Solaris is a trademark of Sun Microsystems, Inc. Canon and NetSpot are registered trademarks, and imageRUNNER, Canon Know How, and the GENUINE logo are trademarks of Canon Inc. IMAGEANYWARE is a service mark of Canon U.S.A., Inc. All other terms and product names may be trademarks or registered trademarks of their respective owners, and are hereby acknowledged.

Specifications are subject to change without notice.

0022W316

0501-iR8500-100M

PRINTED ON RECYCLED PAPER IN THE U.S.A.

