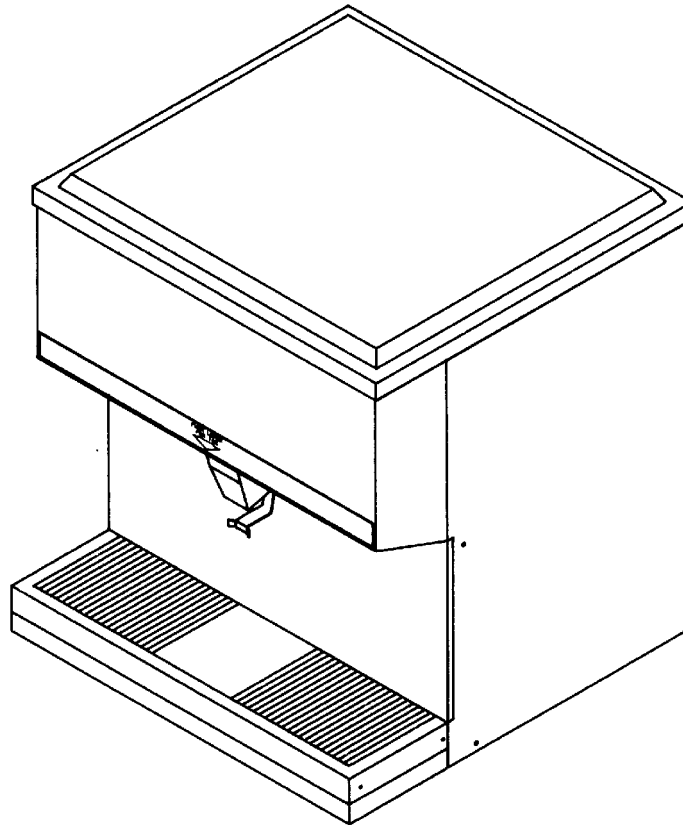




ICE/DISPENSER

Model D3030



Part No 91875.
March, 1997
Revision C

THIS DOCUMENT CONTAINS IMPORTANT INFORMATION

This Manual must be read and understood before installing or operating this equipment

TABLE OF CONTENTS

	Page
SAFETY PRECAUTIONS	1
GENERAL DESCRIPTION	1
INSTALLATION INSTRUCTIONS	2
ADJUSTMENT	2
OPERATING INSTRUCTIONS	5
MAINTENANCE	5
DAILY OR AS REQUIRED	5
WEEKLY OR AS REQUIRED	5
MONTHLY	5
CLEANING INSTRUCTIONS	5
DISPENSER	5
TROUBLESHOOTING GUIDE	7
BLOWN FUSE OR CIRCUIT BREAKER	7
GATE DOES NOT OPEN AGITATOR DOES NOT TURN.	7
GATE DOES NOT OPEN OR IS SLUGGISH. AGITATOR TURNS.	7
GATE OPENS. AGITATOR DOES NOT TURN.	7
ICE DISPENSES CONTINUOUSLY.	7
SLUSHY ICE. WATER IN HOPPER.	7
WARRANTY	13

LIST OF FIGURES

FIGURE 1. GATE RESTRICTOR PLATE	2
FIGURE 2. MOUNTING TEMPLATES	4
FIGURE 3. WIRING DIAGRAM	8
FIGURE 4. SOLENOID ASSEMBLY AND PARTS LIST	9
FIGURE 5. EXPLODED ASSEMBLY (UPPER) AND PARTS LIST	10
FIGURE 6. EXPLODED ASSEMBLY (LOWER) AND PARTS LIST	11
FIGURE 7. MOTOR ASSEMBLY DETAIL AND PARTS LIST	12

LIST OF TABLES

TABLE 1. SPECIFICATIONS	1
-------------------------------	---

Manufactured Under One or More of the Following Patent Numbers:
3,211,336, 3,274,792, 3,393,839, 3,517,860, 3,739,842, 4,215,803, 4,227,377, 4,300,359
4,346,824
Canadian Patent Numbers
912,514 (10/72), 936,855 (11,73), 4,429,543, 4,921,149
Other Patents Pending

SAFETY PRECAUTIONS

Always disconnect power to the dispenser before servicing or cleaning.

Never place hands inside of hopper or gate area without disconnecting power to the dispenser. **Agitator rotation occurs automatically when the dispenser is energized!**

This ice dispenser has been specifically designed to provide protection against personal injury and eliminates contamination of ice. To insure continued protection and sanitation, **observe the following**

ALWAYS be sure the removable lid is properly installed to prevent unauthorized access to the hopper interior and possible contamination of ice.

ALWAYS be sure the upper and lower front panels are securely fastened.

ALWAYS keep area around the dispenser clean of ice cubes.



CAUTION: Dispenser cannot be used with crushed or flaked ice. Use of bagged ice which has frozen into large chunks can void warranty. The dispenser agitator is not designed to be an ice crusher. Use of large chunks of ice which "jam up" inside the hopper will cause failure of the agitator motor and damage to the hopper. If bagged ice is used, it must be carefully and completely broken into small, cube-sized pieces before filling into the dispenser hopper.

GENERAL DESCRIPTION

The D3030 ice dispensers solve ice service needs in the sanitary, space saving, economical way. Designed to be manually filled with ice from any remote ice making source, these dispensers will dispense cubes (up to 1-1/4" in size), cubelets and hard-chipped or cracked ice.

Table 1. Specifications

Model:	D3030
Ice Storage:	220 lbs.
Electrical:	120/1/60 5.5 Amp
Drain Connection:	3/4" FPT
Electrical Connection:	6', 3-Wire Cord with 3-Prong Ground Type Plug
Dimensions:	30"W x 30"D x 36"H

INSTALLATION INSTRUCTIONS

1. The ice dispenser must be sealed to the counter. The template drawings (page 4) indicate openings which must be cut in the counter. Locate the desired position for the dispenser, then mark the outline dimensions and cut out locations using the template drawing. Cut openings in the counter.

Apply a continuous bead of NSF *International* (NSF) approved silastic sealant (DOW 732 or equal) approximately 1/4" inside of the unit outline dimensions and around all openings. Then position the unit on the counter within the outline dimensions. All excess sealant must be wiped away immediately. The sink is shipped loose and is not to be sealed to provide service access.

2. Carefully pull the drain line and power cord through the large opening in the bottom of the unit.
3. Connect the drain tube to an open drain. If additional piping is required, it must be 3/4" IPS (or equal) and must pitch downward away from the unit for proper drainage.
4. Clean the hopper interior. (See CLEANING INSTRUCTIONS on pages 5 & 5).
5. Connect the power cord to a 115 volt, 60 cycle, 3-wire grounded receptacle. All electrical wiring must conform to national and local electrical codes.

NOTE: Water pipe connections and fixtures directly connected to a potable water supply shall be sized, installed and maintained according to federal state, and local laws.

GATE RESTRICTOR PLATE



CAUTION: Disconnect power to dispenser before installing, removing or adjusting restrictor.

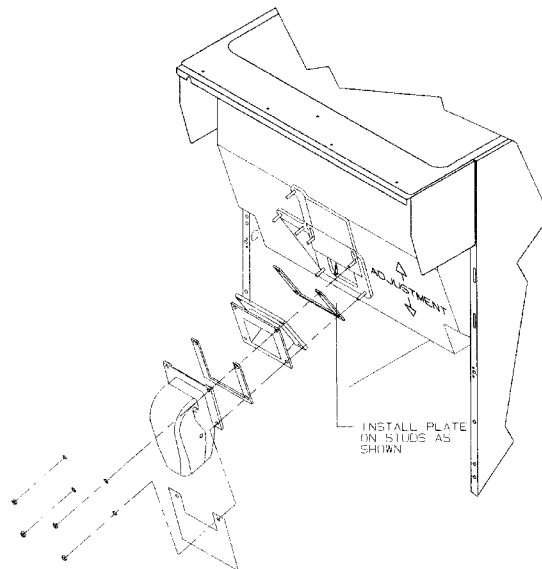
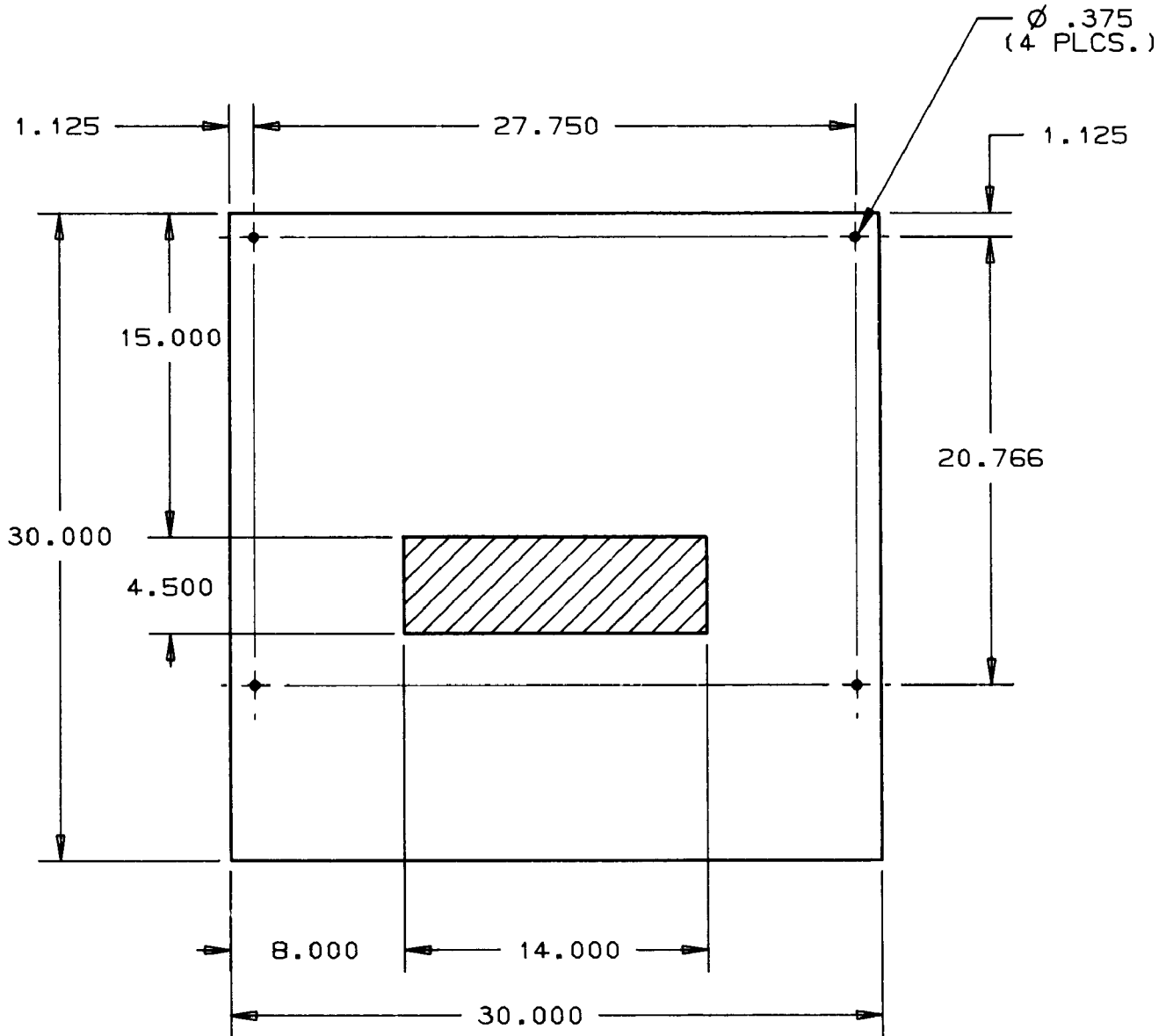


FIGURE 1. GATE RESTRICTOR PLATE

ADJUSTMENTNO TAG

This dispenser is provided with a gate restrictor plate, installed in its' highest position. This plate adjusts the rate of ice flow from the dispenser. In applications using buckets, carafes or other large containers, the plate may be removed entirely for maximum ice flow. For glasses and cups, the plate may be adjusted downward to reduce the flow of ice. The best position depends on the type of ice being used and the size container and must be found by trial and error. Adjustment is made by loosening the upper two ice chute retaining nuts, sliding the restrictor plate to the desired position and re-tightening the nuts.

If the dispenser fails to dispense the ice when operated, check for ice in the hopper and that power is being supplied to the unit. If the problem persists, refer to the troubleshooting guide (page 7).



NOTE: shaded area indicates opening in cabinet bottom needed for utilities and beverage tubing.

FIGURE 2. MOUNTING TEMPLATES

OPERATING INSTRUCTIONS

Fill the hopper with ice and replace the lid. Pushing the dispenser lever will cause ice to flow from the ice chute. Ice flow will continue until the lever is released. If ice does not dispense see the TROUBLESHOOTING GUIDE to find the cause.

NOTE: Use caution to avoid spilling ice when filling dispenser. Immediately clean up any ice spilled from filling or operating the unit. To prevent contamination of ice, the lid must be installed on the unit at all times.

MAINTENANCE

The following dispenser maintenance should be performed at the intervals indicated:

DAILY (or as required)

Remove foreign material from the vending area sink to prevent drain blockage.

WEEKLY (or as required)

Clean vending area. Check for proper water drainage from the vending area sink.

MONTHLY

Clean and sanitize the hopper interior (see CLEANING INSTRUCTIONS).

If the dispenser fails to dispense ice when operated, check that the hopper has ice in it and that power is being supplied to the unit. If the problem persists, refer to troubleshooting guide (page 7).

CLEANING INSTRUCTIONS



WARNING: DISCONNECT POWER BEFORE CLEANING! Do not use metal scrapers, sharp objects or abrasives on the ice storage hopper, top cover and the agitator disk, as damage may result. Do not use solvents or other cleaning agents, as they may attack the plastic material.

DISPENSER

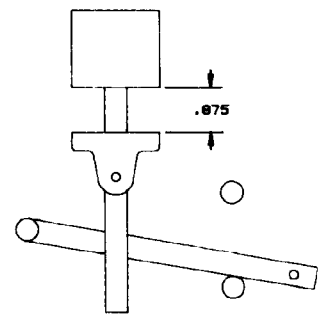
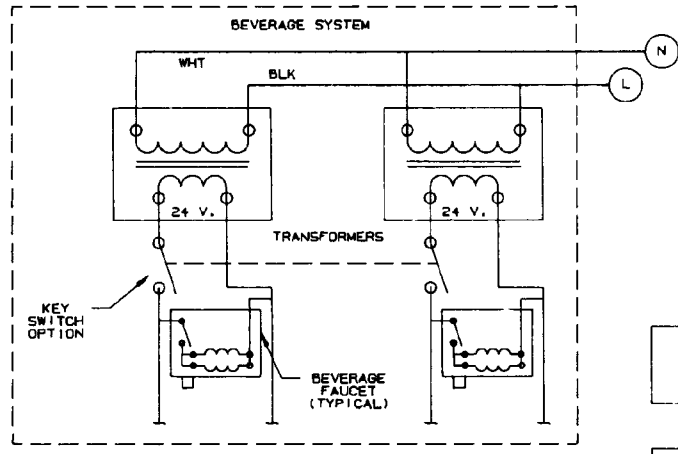
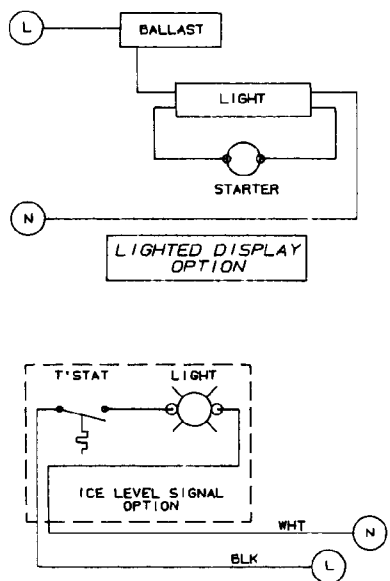
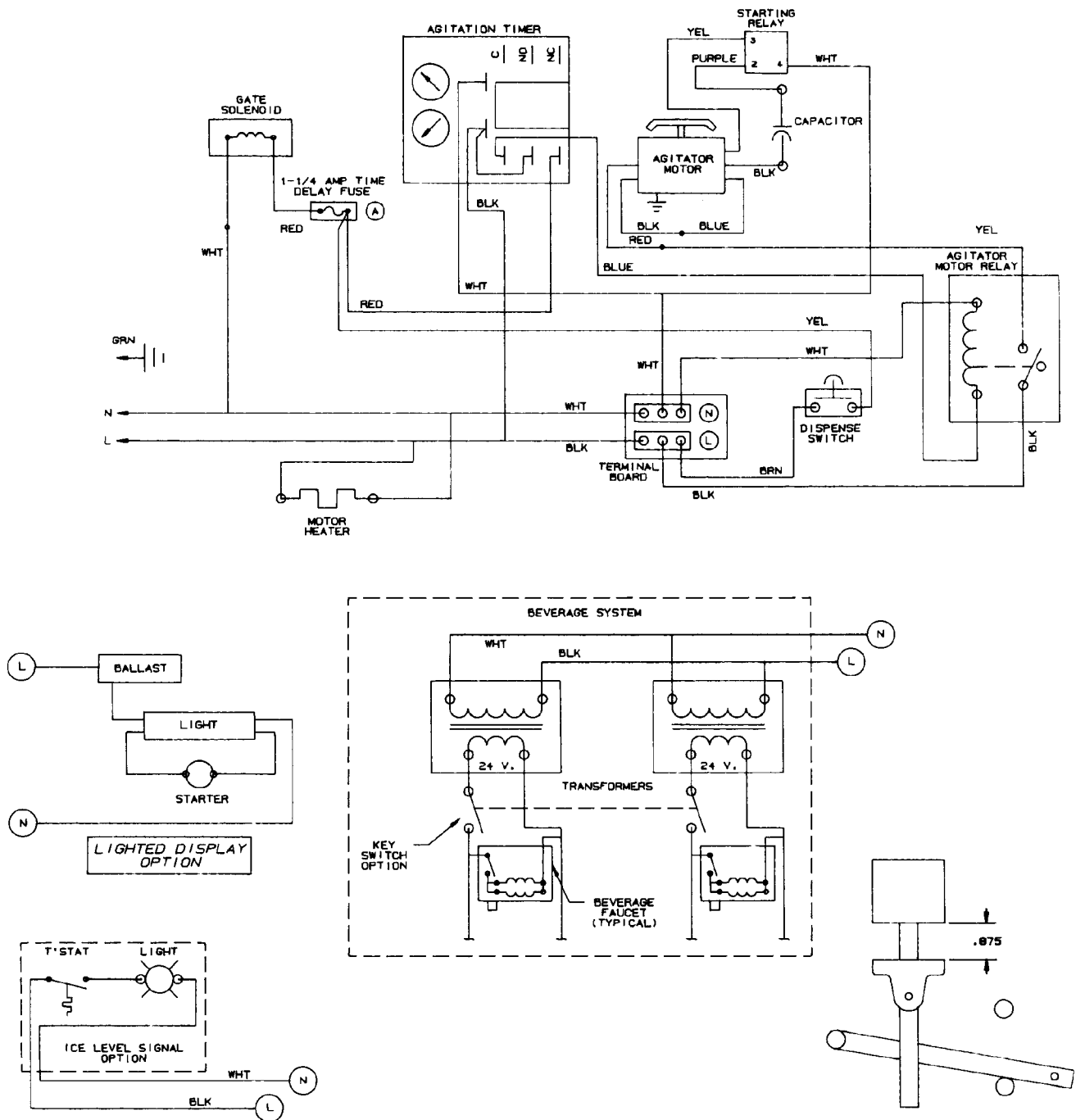
1. Clean the ice storage hopper at least once a month.
2. Remove the center screw on the agitator disk and lift off the agitator and the agitator disk assembly. Wash and rinse them thoroughly.
3. Wash down the inside of the hopper and top cover with a mild detergent solution and rinse thoroughly to remove all traces of detergent.
4. Replace the agitator.

5. Sanitize the inside of the hopper and agitator with a solution of 1/2 ounce of household bleach in 1 gallon of water. (200 PPM)
6. Replace the agitator disk. Sanitize as described in Step 5. Be sure the center screw is replaced and the screw is tight.
7. Remove Ice Chute cover as follows:
 - A. Flex sides outward to disengage lower pins.
 - B. Lift Ice Chute cover to disengage upper pins.
 - C. Lower Ice Chute cover down out of unit. Note: it may be helpful to twist cover slightly.
8. Clean the inside of the ice chute and ice chute cover with a mild detergent solution and rinse thoroughly to remove all traces of detergent.
9. Reverse steps above to reassemble ice chute.
10. Sanitize as described in Step 5.

TROUBLESHOOTING GUIDE

Should your unit fail to operate properly, check that there is power to the unit and that the hopper contains ice. If the unit does not dispense, check the following chart under the appropriate symptoms to aid in locating the defect.

Trouble	Probable Cause
BLOWN FUSE OR CIRCUIT BREAKER	<ul style="list-style-type: none"> A. Short circuit in wiring. B. Defective gate solenoid. C. Defective agitator motor.
GATE DOES NOT OPEN AGITATOR DOES NOT TURN.	<ul style="list-style-type: none"> A. No power. B. Bent depressor plate (does not actuate switch). C. Defective dispensing switch.
GATE DOES NOT OPEN OR IS SLUGGISH. AGITATOR TURNS.	<ul style="list-style-type: none"> A. Defective gate solenoid. B. Weak gate spring C. Excessive pressure against gate slide.
GATE OPENS. AGITATOR DOES NOT TURN.	<ul style="list-style-type: none"> A. Ice solidified in hopper. B. Defective agitator motor. C. Defective capacitor.
ICE DISPENSES CONTINUOUSLY.	<ul style="list-style-type: none"> A. Stuck or bent depressor plate (does not release switch). B. Defective dispensing switch. C. Improper switch installation.
SLUSHY ICE. WATER IN HOPPER.	<ul style="list-style-type: none"> A. Blocked drain. B. Unit not level. C. Poor ice quality due to water quality or icemaker problems



SERVICE INFORMATION

DANGER! ELECTRIC SHOCK HAZARD. DISCONNECT POWER BEFORE SERVICING UNIT.

STANDARD SOLENOID ADJUSTMENT

WHEN REPLACING SOLENOID, ADJUST TO 7/8 INCH AS SHOWN BEFORE TIGHTENING MOUNTING SCREWS.

FIGURE 3. WIRING DIAGRAM

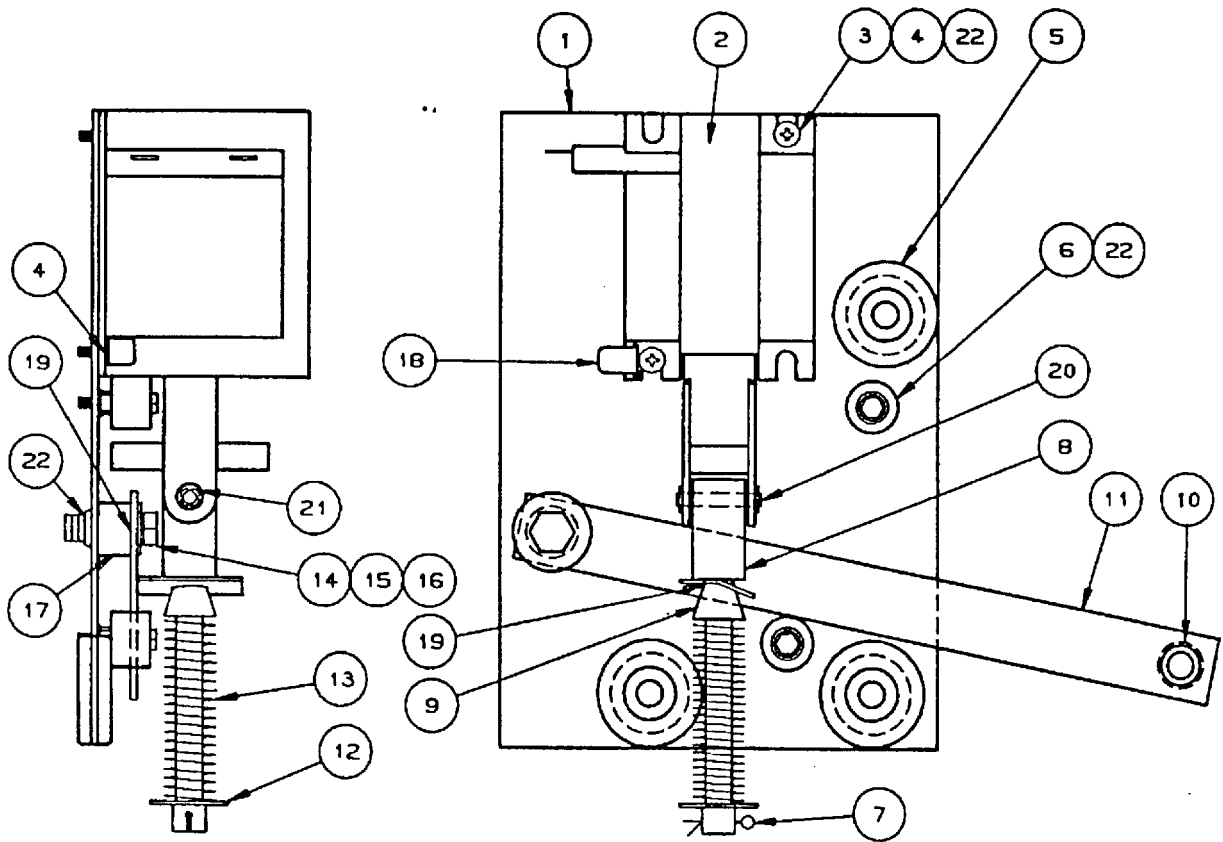


FIGURE 4. SOLENOID ASSEMBLY

Index No.	Part No.	Qty.	Name
1	21493	1	Solenoid mounting plate
2#	31551	1	Solenoid service kit
3	70171	2	8-32 x 3/8 Phil Tr HD Screw
4	70121	2	No. 8 lockwasher
5	50752	3	Isolator
6*	50789	2	Bumper Assembly
7*	70423	1	Cotter Pin
8*	10080	1	Gate Lift Rod
9	10081	1	Gate Lift Rod Bushing
10	50754	1	Gate Arm Bearing
11	21492	1	Gate lift Arm
12	70043	1	Flatwasher
13*	70422	1	Spring
14	70263	1	1/4-20 x 3/4 Hex Hd Screw
15	70048	1	1/4 Lockwasher
16	70066	1	1/4 Flatwasher
17	10077	1	Pivot Bearing
18	30227	1	1/4 Quick Connect Tab
19	50305	--	Lubricant
20*	21592	1	Solenoid Linkage Pin
21*	70433	2	Retainer Ring
22	51088	--	Loctite
--*	70438	--	Rebuilding Kit

NOTE: * Parts supplied with rebuilding kit.
 # 31551 solenoid supplied with items 20 & 21.

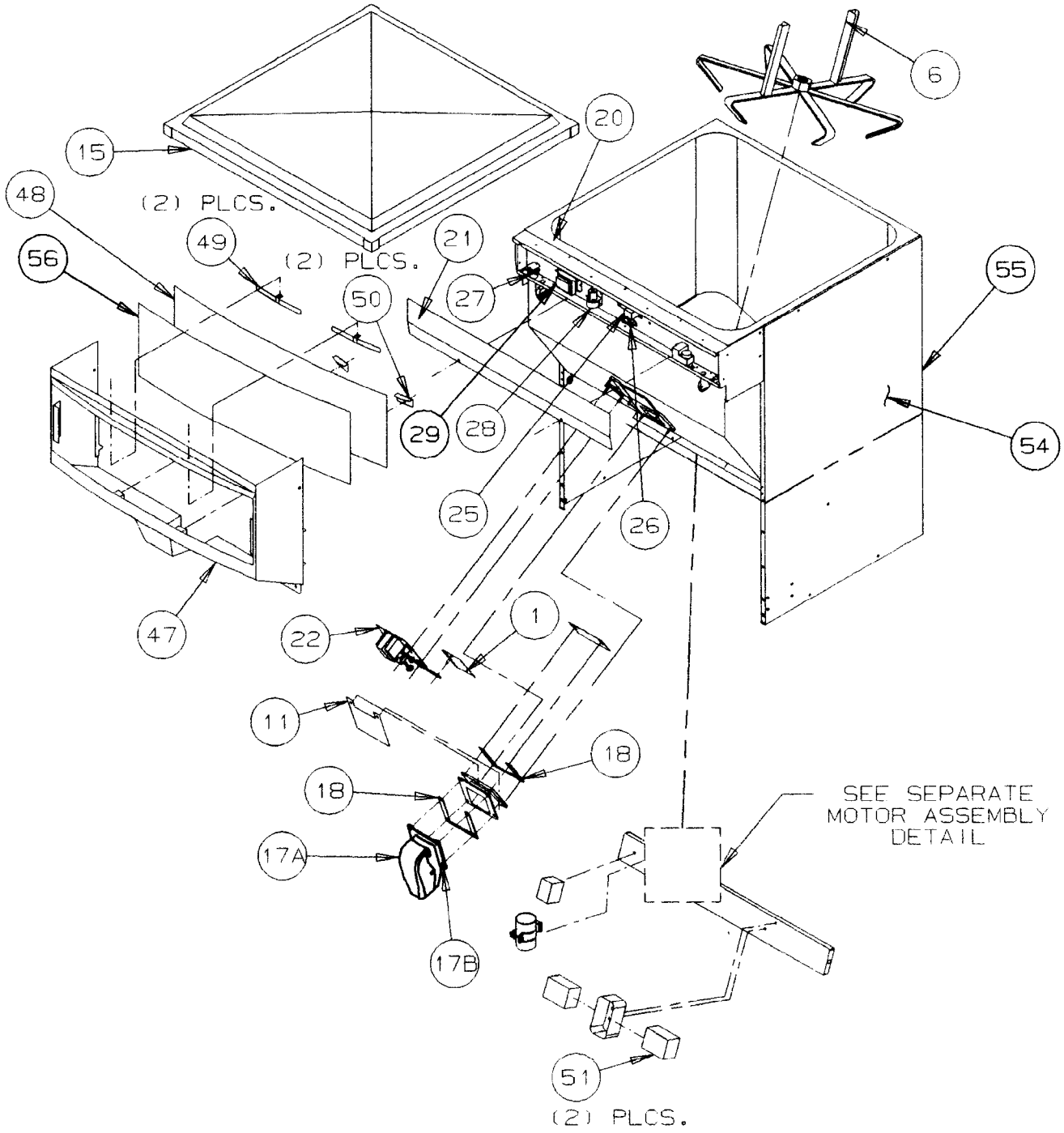


FIGURE 5. EXPLODED ASSEMBLY (UPPER)

PARTS LIST

Item No.	Part No.	Name
1	21491	Gate Slide
2	21515	Depressor Lever - Cup Activated
3	22644	Depressor Retainer (for 21515)
4	27126	Depressor Push Lever
5	27107	Depressor Retainer (for 27126)
6	28075	Agitator
7	02070	Depressor Switch Kit
*8	31007	Switch Boot
*9	31163	Switch Insert
*10	70847	Switch Spacer
11	52239	Foam Shield
12	32939	Agitator Motor
13	51101	Motor Shaft Seal
14	52205	Motor Gasket
15	52152	Lid Black
	52154	Grey
16	52170	Sink Black
	52216	Sink Grey
17	53015	Ice Chute Back Section
	53016	Ice chute Cover
18	51891	Gate Gasket
19	70912	Sink Grill
20	90295	Cleaning Label
21	91680	Wiring Diagram
22	31093	Gate Solenoid Assembly
23	70438	Rebuilding Kit
24	30794	Agitator Motor Heater
25	31763	Agitation Timer
26	31406	Fuse, Gate Solenoid
27	31620	Florescent Starter
28	31375	Relay, Mercury
29	31621	Ballast
30	28080	Panel Lower
31	52203	Tube, Cold Plate Drain
32	52201	Insulation, Cold Plate Drain
33	10145	Pin, sink Extension
34	70032	1/4-20 x 1/2 Zinc Plated HH Screw
35	28377	Bracket, Back, Motor Plate
36	28378	Bracket, Motor Plate
37	70250	1/4-20 x 1/2 Truss Hd Phl Ms Screw
38	70048	1/4 int Tooth Lw Plated
39	70341	Spring
40	52193	Insulation, Motor
41	28210	Bracket, Motor
42	70061	5/16 ID x 3/4 OD x 1/16 Washer
43	52172	Insulation, Motor Plate
44	52260	Merchandiser: Black, DB200
	52265	Gray, DB200
	52187	Black, DB220
	52194	Gray, DB220
	52156	Black, DB275
	52157	Gray, DB275
45	52180	Panel DB200
	52237	DB220
	52171	DB275
46	28235	Assembly, Retainer
47	28313	Hold Down, Graphics
48	31363	Transformer Assembly

* Parts supplied with Dispense Switch Kit, #02070

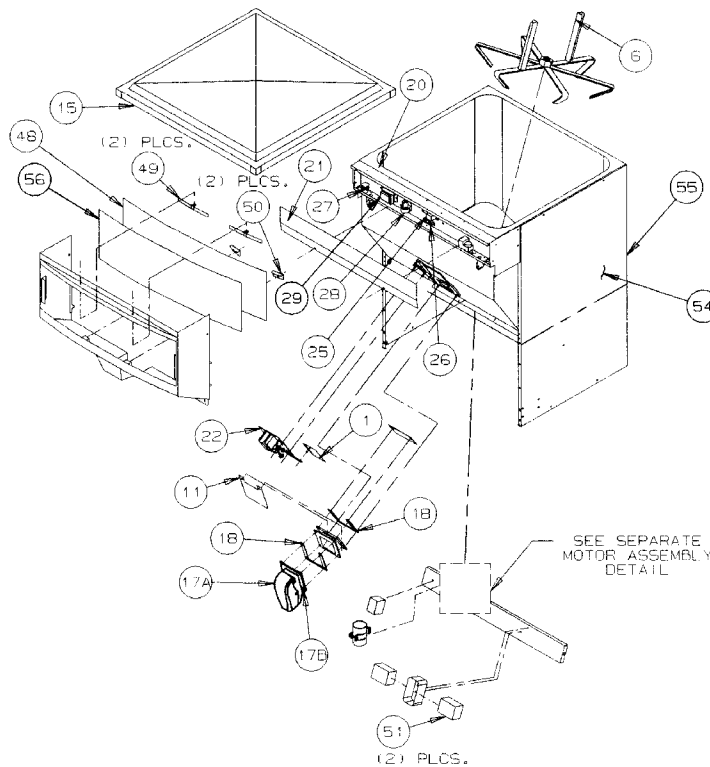


FIGURE 6. EXPLODED VIEW - UPPER SECTION AND PARTS LIST

Item No.	Part No.	Name
1	21491	Gate Slide
6	28075	Agitator
11	52239	Foam Shield
15	52154	Lid - Gray
17	53015	Ice Chute (Clear) Back Section
	53016	Ice Chute Cover
18	51891	Gate Gasket
20	90295	Cleaning label
21	91680	Wiring Diagram (Pull Solenoid)
	91699	Wiring Diagram (Rotary Solenoid See Figure NO TAG)
22	31093	Gate Solenoid Assembly (See Figure NO TAG)
	32954	Rotary Gate Solenoid (See Figure NO TAG)
25	31763	Agitation Timer
26	31406	Fuse, Gate Solenoid
27	31620	Fluorescent Starter
28	31375	Relay Mercury
29	31521	Ballast
48	52180	Panel, Plexiglass DB200
	52171	DB275
49	28235	Assembly, Retainer
50	28313	Hold Down, Graphics
51	32682	Transformer Ass'y (See Note)
54	91888	Decal,, Side Coke DB200
	91697	DB275
55	91889	Decal, Rear Coke DB200
56	91691	Graphics, Coca-Cola DB200
	91683	DB275

NOTE: For units manufactured before October 15, 1993 order part number 33087 transformer kit. This includes a 32682 transformer and two (2) 33084 harnesses.

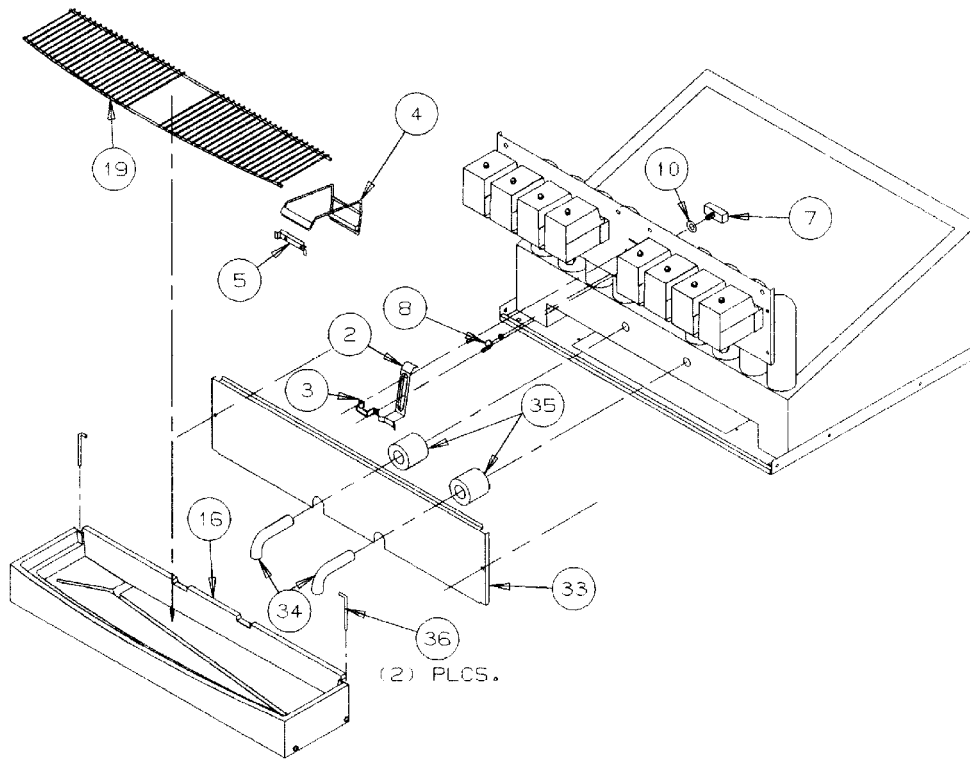


FIGURE 7. EXPLODED VIEW - LOWER SECTION AND PARTS LIST

Item No.	Part No.	Name
2	21515	Depressor Lever - Cup Activated
3	22644	Depressor Retainer (for 21515)
4	27126	Depressor Push Lever
5	27107	Depressor Retainer (for 27126)
7	02070	Depressor Switch Kit
8*	31007	Switch Boot
10*	70847	Switch Spacer
16	52216	Sink - Gray
19	70912	Sink Grill
33	28080	Panel Lower
34	52203	Tube, Cold Plate Drain
35	52201	Insulation, Cold Plate Drain
36	10145	Pin, Sink Extension
Faucet Assembly		
	28223	Panel, 6 Beverage Valves
	28079	Panel, 8 Beverage Valves
	28843	Panel, 10 Beverage Valves
	40944	Beverage Valve, Lancer Lever
	41050	Beverage Valve - Lancer Push Button
	41084	Fitting 90° Inlet
	40704	Plain Water Plug
	40408	Block Mounting Screw 10-32 x 1-1/4

NOTE: * Parts supplied with Dispenser Switch Kit, P/N 02070.

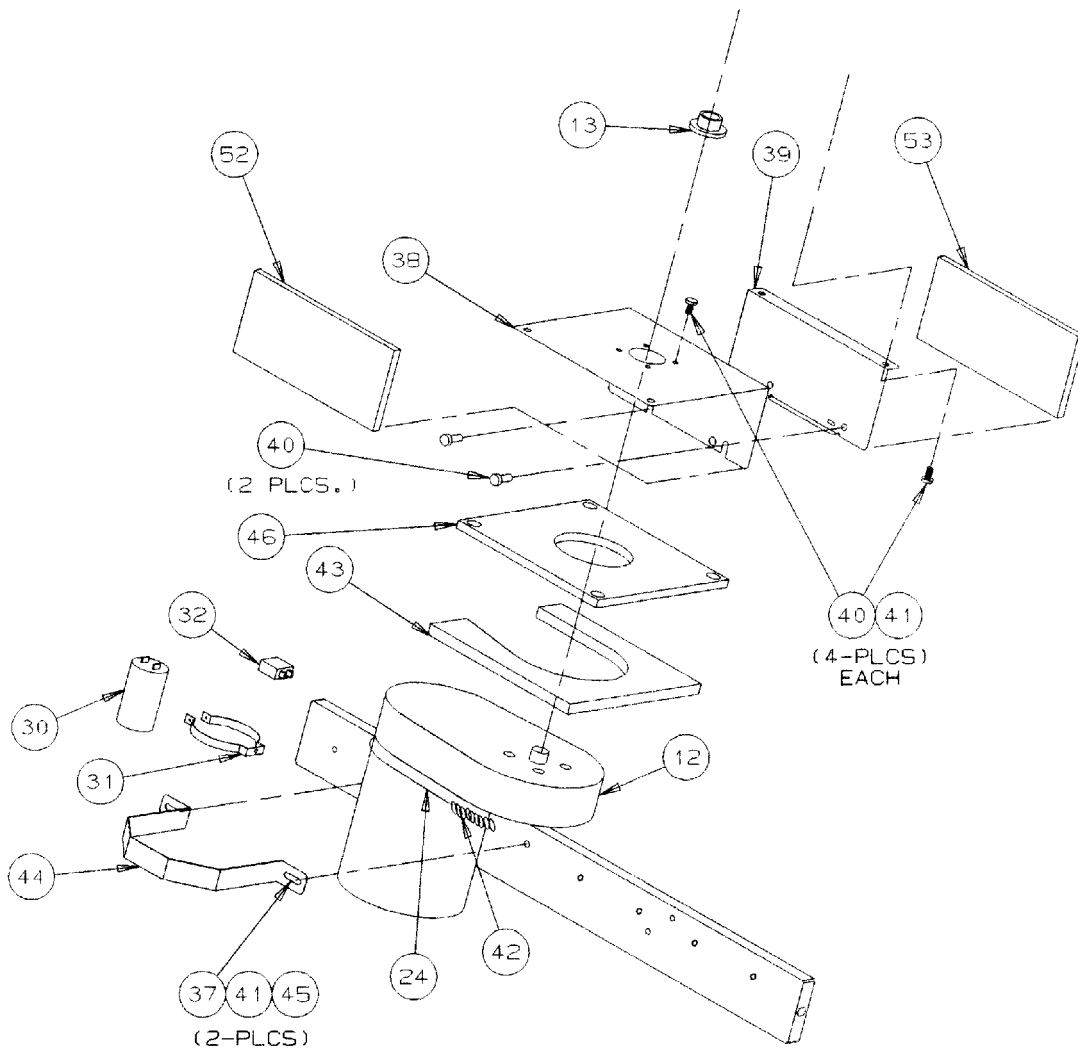


FIGURE 8. MOTOR ASSEMBLY DETAIL AND PARTS LIST

Item No.	Part No.	Name
12	32939	Agitator Motor
13	51101	Motor Shaft Seal
24	30794	Agitator Motor Heater
30	33160	Capacitor
31	70963	Clamp
32	33162	Relay
37	70032	1/4-20 x 1/2 Zinc Plated HH Screw
38	28377	Bracket, Back, Motor Plate
39	28378	Bracket, Motor Plate
40	70250	1/4-20 x 1/2 Truss Hd Phl MS Screw
41	70048	1/4 Int tooth Lw Plated
42	70341	Spring
43	52777	Insulation, Motor
44	28210	Bracket, Motor
45	70061	5/16 ID x 3/4 OD x 1/16 Washer
46	52776	Insulation, Motor plate
52	52778	Motor Plate Insulation, 3/8 Thick
53	52779	Motor Plate Insulation, 3/4 Thick



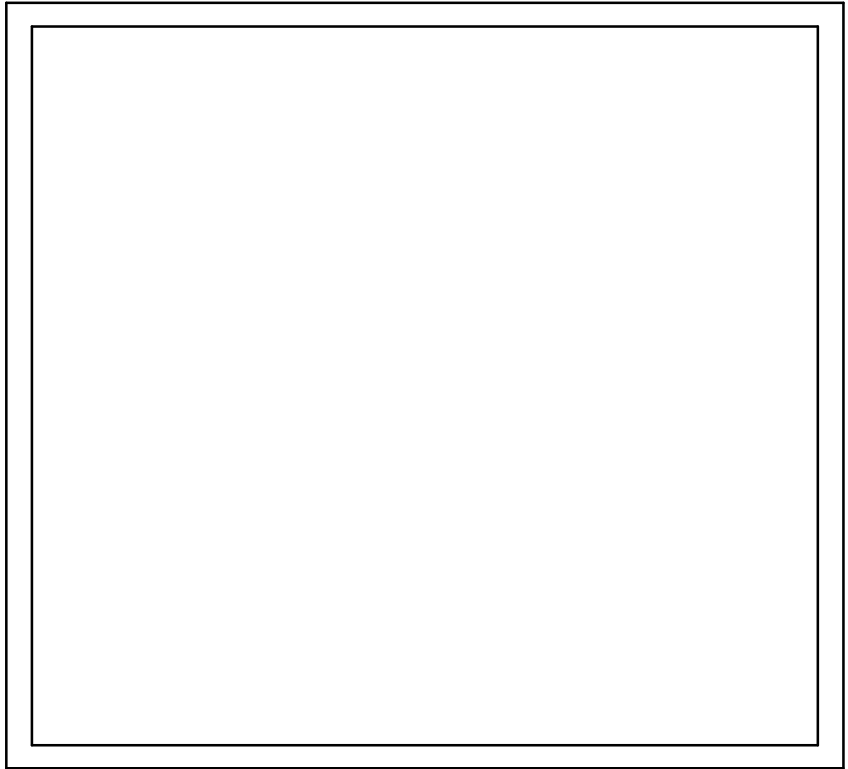
IMI CORNELIUS INC.
ONE CORNELIUS PLACE
ANOKA, MN. 55303-6234
TELEPHONE (800) 238-3600
FACSIMILE (612) 422-3232

WARRANTY

IMI Cornelius Inc. warrants that all equipment and parts are free from defects in material and workmanship under normal use and service. For a copy of the warranty applicable to your Cornelius product, in your country, please write, fax or telephone the IMI Cornelius office nearest you. Please provide the equipment model number and the date of purchase.

IMI Cornelius Offices

AUSTRALIA ● P.O. 210, ● RIVERWOOD, ● NSW 2210, AUSTRALIA ● (61) 2 533 3122 ● FAX (61) 2 534 2166
AUSTRIA ● AM LANGEN FELDE 32 ● A-1222 ● VIENNA, AUSTRIA ● (43) 1 233 520 ● FAX (43) 1-2335-2930
BELGIUM ● BOSKAPPELLEI 122 ● B-2930 BRAASCHAAT, BELGIUM ● (32) 3 664 0552 ● FAX (32) 3 665 2307
BRAZIL ● RUA ITAOCARA 97 ● TOMAS COELHO ● RIO DE JANEIRO, BRAZIL ● (55) 21 591 7150 ● FAX (55) 21 593 1829
ENGLAND ● TYTHING ROAD ALCESTER ● WARWICKSHIRE, B49 6 EU, ENGLAND ● (44) 789 763 101 ● FAX (44) 789 763 644
FRANCE ● 71 ROUTE DE ST. DENIS ● F-95170 DEUIL LA BARRE ● PARIS, FRANCE ● (33) 1 34 28 6200 ● FAX (33) 1 34 28 6201
GERMANY ● CARL LEVERKUS STRASSE 15 ● D-4018 LANGENFELD, WEST GERMANY ● (49) 2173 7930 ● FAX (49) 2173 77 438
GREECE ● 488 MESSOGION AVENUE ● AGIA PARASKEVI ● 153 42 ● ATHENS, GREECE ● (30) 1 600 1073 ● FAX (30) 1 601 2491
HONG KONG ● 1104 TAIKOTSUI CENTRE ● 11-15 KOK CHEUNG ST ● TAIKOKTSUE, HONG KONG ● (852) 789 9882 ● FAX (852) 391 6222
ITALY ● VIA PELLIZZARI 11 ● 1-20059 ● VIMARCATI, ITALY ● (39) 39 608 0817 ● FAX (39) 39 608 0814
NEW ZEALAND ● 20 LANSFORD CRES. ● P.O. BOX 19-044 AVONDALE ● AUCKLAND 7, NEW ZEALAND ● (64) 9 8200 357 ● FAX (64) 9 8200 361
SINGAPORE ● 16 TUAS STREET ● SINGAPORE 2263 ● (65) 862 5542 ● FAX (65) 862 5604
SPAIN ● POLIGONO INDUSTRIAL ● RIERA DEL FONOLLAR ● E-08830 SANT BOI DE LLOBREGAT ● BARCELONA, SPAIN ● (34) 3 640 2839 ● FAX (34) 3 654 3379
USA ● ONE CORNELIUS PLACE ● ANOKA, MINNESOTA ● (612) 421-6120 ● FAX (612) 422-3255



IMI CORNELIUS INC.

Corporate Headquarters:

One Cornelius Place
Anoka, Minnesota 55303-6234
(612) 421-6120
(800) 238-3600