

# Brookstone®

## PowerPlate™

Wireless Charging Receiver for  
BlackBerry® Curve™ 8900



**BlackBerry®**

RECEIVER

## **TABLE OF CONTENTS**

Warnings and Cautions .....	2
Location of Controls.....	5
Attaching the Receiver Door.....	5
Charging .....	6
Care and Maintenance.....	7
Specifications .....	7
Troubleshooting .....	8
Warranty.....	9

## CAUTION

- TO REDUCE THE RISK OF ELECTRIC SHOCK, DO NOT REMOVE COVER. THERE ARE NO SERVICEABLE PARTS INSIDE.
- TO REDUCE THE RISK OF FIRE OR ELECTRIC SHOCK, DO NOT EXPOSE THIS UNIT TO RAIN OR MOISTURE.



The lightning flash with arrow-head symbol within an equilateral triangle is intended to alert the user to the presence of uninsulated “dangerous voltage” within the unit’s enclosure that may be of sufficient magnitude to constitute a risk of electric shock.



The exclamation point within an equilateral triangle is intended to alert the user to the presence of important operating and maintenance (servicing) instructions in the literature accompanying the unit.

## IMPORTANT SAFETY INSTRUCTIONS

All of the safety and operating instructions should be read, adhered to and followed before the unit is operated.

## SAVE THESE INSTRUCTIONS

## **DANGER**

To reduce the risk of electric shock, burns, fire or injury:

1. Do not use while bathing or in a shower.
2. Do not place or store unit where it can fall or be pulled into a tub or sink.
3. Do not place in, drop or submerge in water or other liquid.
4. Do not reach for unit that has fallen into water. Unplug it immediately.
5. Care should be taken so that objects do not fall and liquids are not spilled onto the unit.

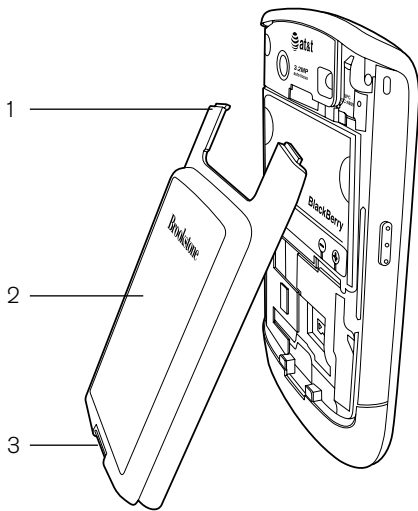
## **WARNING**

1. Close supervision is necessary when this appliance/product is used by or near children or mentally disabled individuals.
2. Use this unit only for its intended use as described in this manual.
3. Unplug this unit during lightning storms or when unused for long periods of time.
4. Never drop or insert an object into any opening.
5. Protect the power cord from being walked on or pinched, particularly at plug outlets, convenience receptacles and the point where it exits the unit.
6. Do not allow the cord to touch hot surfaces. Wrap the cord loosely around the unit when storing.
7. The unit should be situated away from direct sunlight or heat sources such as radiators, electric heaters, heat registers, stoves or other units (including amplifiers) that produce heat. Avoid placing on top of stereo equipment that radiates heat.

8. Never block the air openings of the unit with materials such as clothing, plastic bags or papers, or place it on a soft surface such as a bed or couch, where the air openings may be blocked.
9. Do not overload the electrical outlet. Use only the power source as indicated.
10. Do not carry this unit by its cord or use the cord as a handle.
11. Never operate this unit if it has a damaged cord or plug, if it is not working properly, or if it has been dropped or damaged, or dropped into water. If the unit's power supply cord or plug is damaged, do not attempt to fix it yourself.
12. To avoid the risk of electric shock, do not disassemble or attempt to repair the unit. Incorrect repair can cause risk of electric shock or injury to persons when unit is used.
13. Do not operate in the presence of explosive and/or flammable fumes.
14. Never remove the plug from the outlet by pulling the power cord.
15. Check the voltage indicated on the AC adapter and make sure it corresponds to the local voltage before you connect the adapter to an electrical outlet.
16. Never use the AC adapter, charging pad or receiver sleeve if any of them are damaged in any way.
17. Only use the official AC adapter (supplied together with the receiver sleeve and charging pad).
18. Do not use the charging pad outdoors or near heated surfaces.
19. If you have a pacemaker or other implanted device, consult your doctor or the manufacturer of the implanted device before using the charging pad.

## LOCATION OF CONTROLS

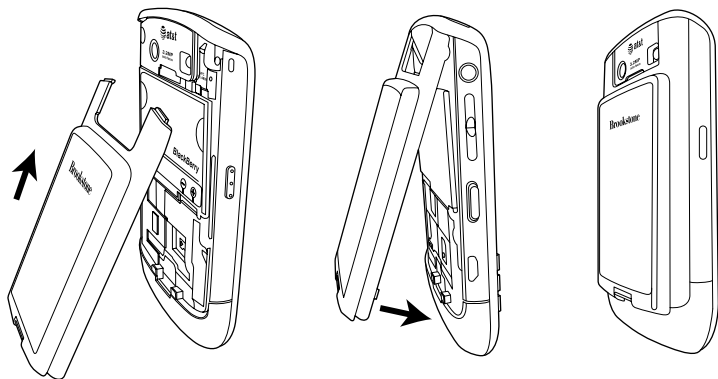
1. Receiver Door
2. Top of Receiver Door
3. Base of Receiver Door



## ATTACHING THE RECEIVER DOOR

1. Remove the original battery door from the back of your BlackBerry® Curve™ 8900 according to the directions in its manual.
2. Attach the RECEIVER DOOR to the back of your BlackBerry® Curve™ 8900 by inserting the top of the RECEIVER DOOR into the top slots on the back of the BlackBerry® Curve™ 8900 first.

3. Press the base of the RECEIVER DOOR onto the back of the BlackBerry® Curve™ 8900 (see below for correct sequence) to secure.



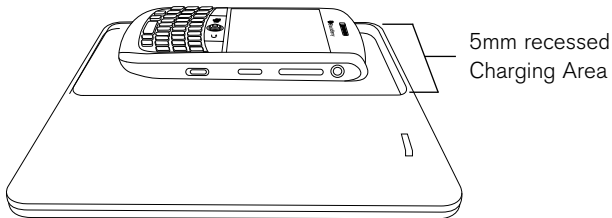
4. The RECEIVER DOOR can be left on the BlackBerry® Curve™ 8900 indefinitely.

## CHARGING

1. Place the BlackBerry® Curve™ 8900 with the RECEIVER DOOR face down on the Power Plate™ CHARGING PAD (not included) in the center of the recessed charging area (see below). The BlackBerry® Curve™ 8900 can be ON or OFF while charging.
2. The CHARGING LIGHT on the CHARGING PAD will illuminate during the charging process.

3. When the BlackBerry® Curve™ 8900 is fully charged, the blue light will turn off.
4. Use your BlackBerry® Curve™ 8900 device as normal.

**WARNING!** Do not plug any adapter or computer into your BlackBerry® Curve™ 8900 while it's charging on the CHARGING PAD. However, you may use your BlackBerry® Curve™ 8900 as you normally would while it's charging.



## CARE AND MAINTENANCE

- Clean the RECEIVER DOOR with a soft, dry, clean cloth.
- Store in a cool, dry place, away from any moisture.

## SPECIFICATIONS

Rated Output ..... DC 5.0V/500mA  
Operation Temperature:..... from 40° to 85° F  
Compatibility..... BlackBerry® Curve™ 8900



# TROUBLESHOOTING

## ISSUE

## SOLUTION

---

Blue charging light will not illuminate, or it's blinking rapidly.

BlackBerry® Curve™ 8900 may be fully charged.

---

Incorrect AC Adapter is connected to the device. Please check the AC Adapter.

---

Device is placed on a vibrating object. The blue light will illuminate and the BlackBerry® Curve™ 8900 will begin to charge after 2 minutes.

---

My BlackBerry® Curve™ 8900 will not charge.

Check the connection tab and make sure a connection is being made to the BlackBerry® Curve™ 8900.

---

Make sure the outlet you have the AC Adapter plugged into is live (i.e.; via wall switch).

---

Check the connection between the AC Adapter jack and the Charging Pad port.

---

Make sure the BlackBerry® Curve™ 8900 is placed in the center of the charging area.

The Trademarks BlackBerry® and Curve™ are owned by Research In Motion Limited and are registered in the United States and may be pending or registered in other countries.

# ONE (1) YEAR LIMITED WARRANTY

Brookstone® warrants this product against defects in materials and/or workmanship under normal use for a period of ONE (1) YEAR from the date of purchase by the original purchaser ("Warranty Period"). If a defect arises and a valid claim is received within the Warranty Period, at its option, Brookstone will either 1) repair the defect at no charge, using new or refurbished replacement parts, or 2) replace the product with a new product that is at least functionally equivalent to the original product, or 3) provide a store credit in the amount of the purchase price of the original product. A replacement product or part, including a user-installable part installed in accordance with instructions provided by Brookstone, assumes the remaining warranty of the original product. When a product or part is exchanged, any replacement item becomes your property and the replaced item becomes Brookstone's property. When a store credit is given, the original product must be returned to Brookstone and becomes Brookstone's property.

**Obtaining Service:** To obtain warranty service, call Brookstone Limited Warranty Service at 1-800-292-9819. Please be prepared to describe the product that needs service and the nature of the problem. A purchase receipt is required. All repairs and replacements must be authorized in advance. Service options, parts availability and response times will vary. You are responsible for delivery and the cost of delivery of the product or any parts to the authorized service center for replacement, per our instructions.

**Limits and Exclusions:** Coverage under this Limited Warranty is limited to the United States of America, including the District of Columbia and the U.S. Territories of Guam, Puerto Rico, and the U.S. Virgin Islands. This Limited Warranty applies only to products manufactured for Brookstone that can be identified by the "Brookstone" trademark, trade name, or logo affixed to them or their packaging. The Limited Warranty does not apply to any non-Brookstone products. Manufacturers or suppliers other than Brookstone may provide their own warranties to the purchaser,

but Brookstone, in so far as permitted by law, provides these products "as is." This warranty does not apply to: a) damage caused by failure to follow instructions relating to product's use or the installation of components; b) damage caused by accident, abuse, misuse, fire, floods, earthquake or other external causes; c) damage caused by service performed by anyone who is not a representative of Brookstone; d) accessories used in conjunction with a covered product; e) a product or part that has been modified to alter functionality or capability; f) items intended to be periodically replaced by the purchaser during the normal life of the product including, without limitation, batteries or light bulbs; g) any product sold "as is" including, without limitation, floor demonstration models and refurbished items; or h) a product that is used commercially or for a commercial purpose.

**BROOKSTONE SHALL NOT BE LIABLE FOR INCIDENTAL OR CONSEQUENTIAL DAMAGES RESULTING FROM THE USE OF THIS PRODUCT, OR ARISING OUT OF ANY BREACH OF THIS WARRANTY. TO THE EXTENT PERMITTED BY APPLICABLE LAW, BROOKSTONE DISCLAIMS ANY AND ALL STATUTORY OR IMPLIED WARRANTIES, INCLUDING, WITHOUT LIMITATION, WARRANTIES OF MERCHANTABILITY, FITNESS FOR A PARTICULAR PURPOSE AND WARRANTIES AGAINST HIDDEN OR LATENT DEFECTS. IF BROOKSTONE CANNOT LAWFULLY DISCLAIM STATUTORY OR IMPLIED WARRANTIES, THEN TO THE EXTENT PERMITTED BY LAW, ALL SUCH WARRANTIES SHALL BE LIMITED IN DURATION TO THE DURATION OF THIS EXPRESS WARRANTY.**

Some states disallow the exclusion or limitation of incidental or consequential damages or how long an implied warranty lasts, so the above exclusions or limitations may not apply to you. This warranty gives you specific legal rights and you may also have other rights, which vary from state to state.

# Brookstone®

A WORLD OF INNOVATION

Since 1965, people have come to Brookstone to see what's new, discover smart solutions to everyday problems—and have some fun. At Brookstone, we believe there's always a better way to do things. And we created a world of innovation to prove it.

Merrimack, New Hampshire USA 03054 • 800-846-3000 • [www.Brookstone.com](http://www.Brookstone.com)

648006