

htc S740
Quick Start Guide

Please Read Before Proceeding

THE BATTERY IS NOT CHARGED WHEN YOU TAKE IT OUT OF THE BOX.
DO NOT REMOVE THE BATTERY PACK WHEN THE DEVICE IS CHARGING.
YOUR WARRANTY IS INVALIDATED IF YOU OPEN OR TAMPER WITH THE DEVICE'S OUTER CASING.

PRIVACY RESTRICTIONS

Some countries require full disclosure of recorded telephone conversations, and stipulate that you must inform the person with whom you are speaking that the conversation is being recorded. Always obey the relevant laws and regulations of your country when using the recording feature of your PDA Phone.

Disclaimers

THE WEATHER INFORMATION, DATA AND DOCUMENTATION ARE PROVIDED "AS IS" AND WITHOUT WARRANTY OR TECHNICAL SUPPORT OF ANY KIND FROM HTC. TO THE MAXIMUM EXTENT PERMITTED BY APPLICABLE LAW, HTC AND ITS AFFILIATES expressly disclaim any and all representations and warranties, express or implied, arising by law or otherwise, regarding the Weather Information, Data, Documentation, or any other Products and services, including without limitation any express or implied warranty of merchantability, express or implied warranty of fitness for a particular purpose, non-infringement, quality, accuracy, completeness, effectiveness, reliability, usefulness, that the Weather Information, Data and/or Documentation will be error-free, or implied warranties arising from course of dealing or course of performance.

Without limiting the foregoing, it is further understood that HTC and its Providers are not responsible for Your use or misuse of the Weather Information, Data and/or Documentation or the results from such use. HTC and its Providers

make no express or implied warranties, guarantees or affirmations that weather information will occur or has occurred as the reports, forecasts, data, or information state, represent or depict and it shall have no responsibility or liability whatsoever to any person or entity, parties and non-parties alike, for any inconsistency, inaccuracy, or omission for weather or events predicted or depicted, reported, occurring or occurred. WITHOUT LIMITING THE GENERALITY OF THE FOREGOING, YOU ACKNOWLEDGE THAT THE WEATHER INFORMATION, DATA AND/OR DOCUMENTATION MAY INCLUDE INACCURACIES AND YOU WILL USE COMMON SENSE AND FOLLOW STANDARD SAFETY PRECAUTIONS IN CONNECTION WITH THE USE OF THE WEATHER INFORMATION, DATA OR DOCUMENTATION.

Limitation of Damages

TO THE MAXIMUM EXTENT PERMITTED BY APPLICABLE LAW, IN NO EVENT SHALL HTC OR ITS PROVIDERS BE LIABLE TO USER OR ANY THIRD PARTY FOR ANY INDIRECT, SPECIAL, CONSEQUENTIAL, INCIDENTAL OR PUNITIVE DAMAGES OF ANY KIND, IN CONTRACT OR TORT, INCLUDING, BUT NOT LIMITED TO, INJURY, LOSS OF REVENUE, LOSS OF GOODWILL, LOSS OF BUSINESS OPPORTUNITY, LOSS OF DATA, AND/OR LOSS OF PROFITS ARISING OUT OF, OR RELATED TO, IN ANY MANNER, OR THE DELIVERY, PERFORMANCE OR NONPERFORMANCE OF OBLIGATIONS, OR USE OF THE WEATHER INFORMATION, DATA OR DOCUMENTATION HEREUNDER REGARDLESS OF THE FORESEEABILITY THEREOF.

Contents

1. Welcome to the HTC S740 Quick Start Guide	6
2. Inside the Box	6
3. Getting to Know the Phone.....	7
4. Installing the SIM Card and Battery	8
5. Charging the Battery.....	11
6. Starting Up.....	11
7. The Home Screen	13
8. Quick List.....	14
9. Making Your First Call.....	14
10. Entering Information	15
11. Adding Contacts to Your Phone	16
12. Sending a Text Message	17
13. Sending an MMS Message.....	17
14. Setting Up Wi-Fi.....	18
15. Setting Up an Internet E-mail Account	19
16. Surfing the Web.....	20
17. Changing Phone Settings.....	21
18. Bluetooth	24

19. Keeping Track of Appointments.....	26
20. Keeping Track of Things to Do.....	27
21. Taking Photos and Shooting Videos	28
22. Viewing Photos and Videos.....	30
23. Synchronizing Your Phone with Your PC	31
24. Copying Files to Your Phone	33
25. Synchronizing Music Files	34
26. Listening to Music on Your Phone	35

1. Welcome to the HTC S740 Quick Start Guide

Congratulations on your purchase of the HTC S740 phone. This **Quick Start Guide** will help you get started with your Windows Mobile® 6.1 Standard powered phone.

We've arranged this Quick Start Guide in such a way that it starts from when you open the box and then it walks you through the features we feel that you want to know or use right away when you turn on your phone for the first time.

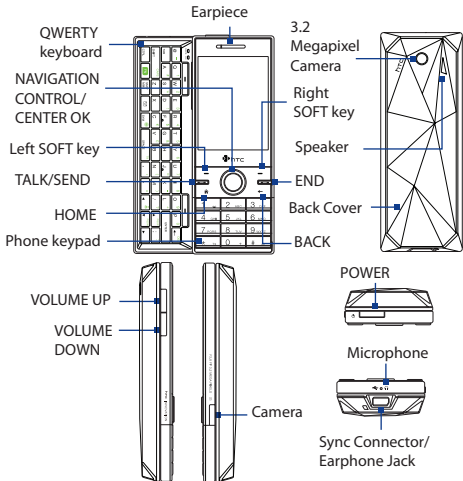
For a more complete guide in using your phone, please refer to the **User Manual PDF** that we have included in the **Getting Started disc** that came with the phone.

2. Inside the Box

You should find the following items inside the box.

- HTC S740 phone
 - Battery
 - AC adapter
 - Wired stereo headset
 - USB sync cable
 - Quick Start Guide
 - Getting Started disc
-

3. Getting to Know the Phone

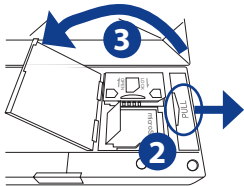


4. Installing the SIM Card and Battery

Make sure your phone is turned off before installing the SIM card and battery. You need to remove the back cover before you can install the battery.

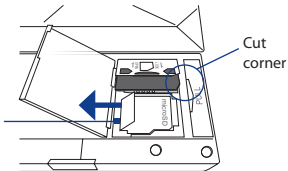
To install the SIM card

1. Slide open the QWERTY keyboard by pushing the front panel of the phone to the right.
2. Flip the phone upside down and then unlock the SIM card and storage card compartment by gently pulling on "PULL". The compartment slightly opens.
3. Open the compartment.
4. Push the SIM card holder to the direction of "OPEN" and then lift the edge of the SIM card holder.
5. Insert the SIM card with its gold contacts facing down (check the SIM card slot for the correct orientation when inserting the SIM card).



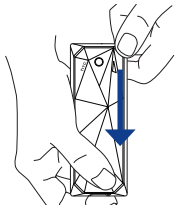
6. Push down the SIM card holder and then lock the SIM card holder by pushing the SIM card holder to the direction of "LOCK."

Make sure to pull this flap back before you push down the SIM card holder.



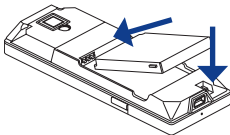
To remove the back cover

1. Hold the phone with both hands and the front panel facing down.
2. Push the back cover down with your thumb until it disengages from the phone and then slide it out to remove.



To install the battery

1. Align the battery's exposed copper contacts with the battery connectors inside the battery compartment.
2. Insert the side of the battery with the contacts first and then gently push the battery into place.
3. Replace the back cover.



You can also install a microSD card™ (not included in the box) on your phone. To learn how to install a microSD card, refer to the User Manual PDF on the Getting Started disc.

5. Charging the Battery

New batteries are shipped partially charged. Before you start using your phone, it is recommended that you install and charge the battery.

To charge the battery

1. Connect the USB connector of the AC adapter to the sync connector at the bottom of your phone.
2. Plug in the AC adapter to an electrical outlet to start charging the battery.

The battery is fully charged after about **3 hours** of charging.

6. Starting Up

After installing your SIM card and battery and charging the battery, you can now power on and start using your phone.

To turn on the power

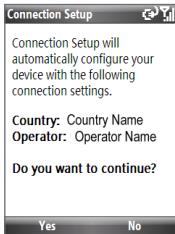
Press and hold the POWER button for a few seconds. When you turn on the phone the first time, the phone installs customization settings and then restarts.

Configure data connection settings

After the phone restarts, you will be asked if you want to automatically configure your phone's data connections. By letting the phone configure the data connection settings, you do not need to enter the settings for 3G/GPRS and WAP manually.

To automatically configure data connection settings

1. When you see the Connection Setup screen, click **Yes**. Connection Setup then starts to configure your phone's data connection settings.
2. After the Connection Setup completes the configuration, click **Restart**.

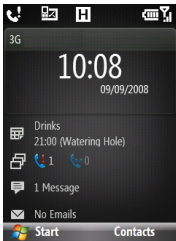


Note For step 1, if your SIM card supports multiple network operator profiles, a message will appear with network profile choices. Select the profile you want to use and click **OK**.

7. The Home Screen

After the phone restarts from configuring your data connections, you are taken to the HTC Home™. HTC Home lets you quickly access various information, applications, and settings on the phone.

Slide open the keyboard while on the Home screen to open the Tasks Screen. The screen automatically switches to landscape mode.



Navigate through the items on the HTC Home by pressing NAVIGATION up or down. When an item is selected, press NAVIGATION left/right to go through the available options of that particular HTC Home item. Open the item by pressing CENTER OK.

For more information about HTC Home and the Tasks Screen, refer to the User Manual PDF in the Getting Started disc.

8. Quick List

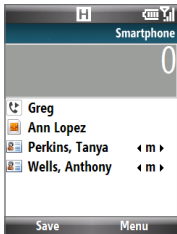
The Quick List offers convenient access to a list of functions, such as locking your phone and keypad, opening Comm Manager, and choosing a different profile.

To access the Quick List

1. Briefly press (press and quickly release) the POWER button.
2. Select the desired option and click **Select**.

9. Making Your First Call

1. Enter the phone number by pressing the keys on the keypad. Press the BACK key if you need to delete a number.
2. Press TALK/SEND.



10. Entering Information

You can enter text, numbers, and symbols using the keypad or QWERTY keyboard.



Use the keypad to dial phone numbers or type short text messages.



Use the QWERTY keyboard to type e-mails and long messages.

Note When you slide open the QWERTY keyboard, the display orientation of the screen automatically changes to landscape mode; when you close it, the screen orientation switches back to portrait mode.

For more information about the keypad and QWERTY keyboard, see Chapter 1 of the User Manual PDF.

11. Adding Contacts to Your Phone

Save the contact information of the people you stay in touch with on your phone.

To add a contact to your phone

1. On the Home screen **Home** item, click **Contacts > New > Outlook Contact**.

Tip Select **SIM Contact** to create the contact on the SIM card.

2. Enter information for the new contact.
3. Click **Done**.

To copy SIM card contacts to your phone

Copying the contacts on your SIM card to the phone will result in duplicate contacts in the Contacts list.

1. On the Home screen, click **Start > All Programs > Accessories > SIM Manager**.
 2. Select a SIM contact or select all SIM contacts by clicking **Menu > Select All**.
 3. Click **Menu > Save to Contacts**.
-

12. Sending a Text Message

Create and send SMS messages from your phone.

1. On the Home screen, scroll to the **Messages** item and then press CENTER OK.

Note If you have unread messages, you will need to press NAVIGATION right until you see **New Message** before pressing CENTER OK.

2. Click **Text message**.
3. Enter the mobile phone number of one or more recipients, separating them with a semicolon (;).
4. Enter your message. You can enter up to 160 characters in one message.
5. Click **Send**.

13. Sending an MMS Message

Create and send multimedia messages from your phone.

1. On the Home screen, scroll to the **Messages** item and then press CENTER OK.

Note If you have unread messages, you will need to press NAVIGATION right until you see **New Message** before pressing CENTER OK.

2. Click **Media message**.
3. In **To**, enter the recipient's phone number or e-mail address.
4. In **Subject**, enter a subject for your message.
5. Fill in the MMS message components by clicking **Insert Picture/Video**, **Insert Text**, and **Insert Audio**.
6. Click **Send**.

14. Setting Up Wi-Fi

Connect to a Wi-Fi hotspot to browse the Internet.

To connect to an open Wi-Fi network

1. On the Home screen, click **Start > All Programs > Accessories > Comm Manager** and click the Wi-Fi icon. The button on this item is then highlighted to indicate that WLAN is turned on.
2. After a few seconds, a message asks you if you want to see the list of available networks, click **Yes**.
3. In **Select network**, choose an open (unsecured) WLAN network to connect to and then click **Connect**.

To learn how to connect to a secured network, please refer to Chapter 8 of the User Manual PDF.

15. Setting Up an Internet E-mail Account

Set up your personal e-mail account such as Gmail or Yahoo! on your phone.

1. Click **Start > All Programs > Messaging > New Email Account**.
2. Enter the E-mail address and Password for the e-mail account and select the **Save password** option. Click **Next**.
3. Click **Next**.

Note E-mail Setup searches your phone for preloaded e-mail configuration settings. If the phone cannot find the server settings for the specified e-mail account, your phone needs to connect to the Internet and try to download the settings. If it cannot find the settings online, you need to enter the settings manually.

4. Enter **Your name** and the **Account display name** and then click **Next**.
5. In the **Automatic Send/Receive list**, choose how frequent you want e-mail messages to be automatically sent and downloaded on your phone.

Note Click **Review all download settings** to select download options, set the e-mail format as HTML or plain text, and more.

6. Click **Finish**.
-

To send e-mail using the Internet e-mail account

1. Click **Start > All Programs > Messaging** and then select the e-mail account you have just created.
2. Click **Menu > New**.
3. Enter the e-mail address of one or more recipients, separating them with a semicolon.
4. Enter a subject and compose your message.
5. Click **Send**.

16. Surfing the Web

Internet Explorer Mobile is a full-featured Internet browser, optimized for use on your phone.

Browse the web with Internet Explorer

1. On the Home screen, click **Start > All Programs > Internet Explorer**.
 2. In Internet Explorer, click **Menu > Address Bar**.
 3. Enter the address and click **Go**.
 4. Use the NAVIGATION CONTROL to browse the web page. Press CENTER OK when a link is highlighted to access it.
-

17. Changing Phone Settings

Customize your phone settings to suit your personal preferences.

To change the ringtone

1. On the Home screen, scroll down to the **Settings** item.
2. Press NAVIGATION right until you see **Ringtone** and then press CENTER OK.
3. On the Sounds screen, select a ringtone in **Ring tone** and then click **Done**.

To set an alarm

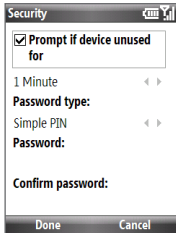
You can set 2 different alarms on your phone.

1. On the Home screen, scroll to the **Home** item (date/time display) and then press CENTER OK.
 2. Click **Alarm 1** or **Alarm 2**.
 3. Set the Alarm settings you want and then click **Done**.
An Alarm icon appears on the **Home** item of the HTC Home.
-

To enable device lock

Enabling device lock requires you to enter a password to unlock the phone after it has been left idle for a set period of time.

1. On the Home screen, click **Start > All Programs > Settings > Security > Device lock**.
2. Select **Prompt if device unused for**, then select the amount of time for the phone to be inactive before automatically locking.
3. Select the **Password type**, then enter and confirm your password.
4. Click **Done**.



To enable the SIM card PIN

Enabling the SIM card PIN requires you to enter a password first before you can use the phone features of the device.

1. On the Home screen, click **Start > All Programs > Settings > Security > Enable SIM PIN**.
2. Enter the PIN you want to use and click **Done**.

To change battery and backlight settings

Conserve battery power by adjusting the battery and backlight settings.

On the Home screen, click **Start > All Programs > Settings > Power Management**, and adjust the backlight, display, or light sensor settings.

- Tip** If you do not want to charge the battery while the phone is connected to the computer, in **When device is turned on, do not charge the battery when connected to the PC**, select **On**.
-

18. Bluetooth

Pair your phone with other Bluetooth-enabled devices or a Bluetooth headset if you have one.

To pair your phone with a Bluetooth device

1. On the Home screen, click **Start > All Programs > Settings > Connections > Bluetooth**.
 2. Click **Bluetooth > Add new device**. Your phone searches for other Bluetooth-enabled devices and lists them.
 3. Select the desired device name in the list and click **Next**.
 4. Enter a passcode (1 up to 16 characters) to establish a secure connection, then click **Next**.
 5. Wait for the paired device to accept the partnership:
 6. On your phone, a message will appear, indicating that your phone has connected with the paired device. Click **OK**.
 7. The name of the paired device is then displayed. You may edit and enter a new name for that device, then click **Next**.
 8. Select the check boxes of services that you want to use from the paired device and click **Done**.
-

To pair your phone with a Bluetooth headset

1. Make sure that both your phone and the Bluetooth headset are turned on and that the headset is visible.
2. Click **Start > All Programs > Settings > Connections**.
3. Click **Bluetooth > Add new device**.
4. Select the name of the Bluetooth headset, then click **Next**.
The phone will automatically pair with the Bluetooth headset.

Windows Mobile will automatically try one of the preconfigured passcodes (0000, 1111, 8888, 1234) to pair the Bluetooth headset with the phone. If this fails, you have to enter the passcode delivered with your headset manually.

For more information about Bluetooth, refer to Chapter 8 of the User Manual PDF.

19. Keeping Track of Appointments

Use Calendar to help remind you of your upcoming appointments.

To enter an appointment into your phone

- 1.** On the Home screen, click **Start > All Programs > Calendar**.
- 2.** Click **Menu > New Appointment**.
- 3.** Enter information about the appointment.
- 4.** Click **Done**.

The upcoming appointment will show on the **Appointment** item of the HTC Home.

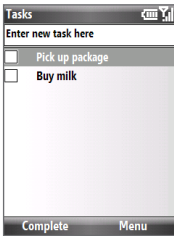
20. Keeping Track of Things to Do

Use Tasks to help you remember things that you have to do.

To create a to-do list

1. On the Home screen, click **Start > All Programs > Tasks**.
2. Click **Menu > New Task**.
3. Enter the necessary task information and click **Done**.

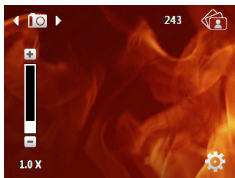
Refer to Chapter 5 of the User Manual PDF to learn more about Tasks.



21. Taking Photos and Shooting Videos

Use the 3.2 megapixel camera of the phone to take photos and shoot videos.

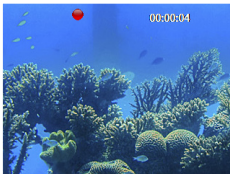
Note The screen orientation automatically switches to landscape mode when you open Camera.



To take a photo

1. Press the CAMERA button on the right side of the phone.
 2. Aim the phone at the subject.
 3. Press the CENTER OK or CAMERA button to take the shot.
-

To shoot video



1. On the Home screen, click **Start > All Programs > Multimedia > Video Recorder**.
2. Aim the phone at the subject.
3. Press the CENTER OK or CAMERA button to start capturing video.
Press the CENTER OK or CAMERA button again to stop recording video.

To learn more about the other capture modes and functions of the Camera, refer to Chapter 10 of the User Manual PDF.

22. Viewing Photos and Videos

Use Album to browse photos and play back video.

Note Camera Album can only display files using the JPEG, MPEG4 or H.263 file formats.

To view photos

1. On the Home screen, click **Start > All Programs > Multimedia > Camera Album**.
2. On the main Camera Album screen, use the NAVIGATION CONTROL to select the image you want to view and then press CENTER OK.
3. Press NAVIGATION right or left to go to the next or previous image.

To view videos in Camera Album, you need to open Camera Album from the Camera program.

For more information about how to open Camera Album from Camera and how to use Camera Album, refer to Chapter 10 of the User Manual PDF.

23. Synchronizing Your Phone with Your PC

Synchronize information and files between your PC and phone.

Note You can refer to Chapter 3 of the User Manual PDF to know which information and files you can synchronize.

Set up synchronization software on your PC

Depending on the Operating System of your PC, you will need either Microsoft ActiveSync® 4.5 (or later) or Windows Mobile® Device Center to synchronize your phone with your PC.

To synchronize your phone with a Windows XP PC

1. Insert the Getting Started Disc into the disc drive on your PC.
 2. Follow the on-screen instructions to install ActiveSync.
 3. After installation is completed, connect your phone to your PC.
 4. The Synchronization Setup Wizard automatically starts and guides you to create a synchronization relationship. Click **Next** to proceed.
 5. To synchronize your phone with your computer, clear the **Synchronize directly with a server running Microsoft Exchange Server** check box then click **Next**.
-

6. Select the information types that you want to synchronize and then click **Next**.
7. Click **Finish**.

To synchronize your phone with a Windows Vista PC

1. Connect your phone to your PC. Windows Mobile Device Center configures itself and then opens.
2. On the license agreement screen, click Accept.
3. On the Windows Mobile Device Home screen, click **Set up your device**.
4. Select the information types that you want to synchronize then click **Next**.
5. Enter a phone name for your phone and click **Set Up**.

For more information about synchronization, refer to Chapter 3 of the User Manual PDF.

24. Copying Files to Your Phone

You can install a microSD™ card into your phone to have additional storage to store files.

To copy files from the PC to the phone's storage card

1. Connect your phone to your PC using the supplied USB cable.
2. Click **File Management > Browse the contents of your device** in Windows Mobile Device Center or click **Explore** in ActiveSync on your PC. This opens Windows Explorer on your PC and displays the contents of your phone.
3. Browse the folders on your PC, right-click the file you want to copy and then click **Copy**.
4. Go to **My Windows-Based Mobile Device > Storage Card** and then right-click on the screen and click **Paste**.

When you want to copy media files such as music and videos to your phone from your PC, it is recommended that you use Windows Media Player to copy the media files.

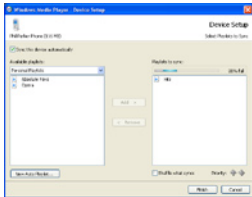
25. Synchronizing Music Files

Synchronize music files on your PC and the phone so you can listen to them while on the go.

1. On your computer, open Windows Media® Player and then connect your phone to your computer.
2. On the Device Setup dialog box, enter a name for your phone and click **Finish**.
3. On the left panel of Windows Media® Player, right-click the name of your phone and click **Set Up Sync**.

Note You can also sync your storage card if you have one installed on your phone. To sync, right-click **Storage Card**.

4. Select the music playlist(s) that you want to sync between your computer and the phone and then click **Add**.
5. Click **Finish**.

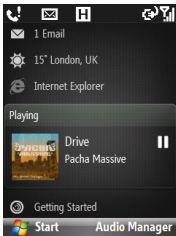


26. Listening to Music on Your Phone

After synchronizing music files to your phone, you can use the **Music** item on the HTC Home to play back music on your phone.

To listen to music

1. On the Home screen, scroll down to the **Music** item.
2. Press the CENTER OK button to play back the songs.



For more information about the **Music** item, refer to the User Manual PDF.

Important Health Information and Safety Precautions

When using this product, the safety precautions below must be taken to avoid possible legal liabilities and damages.

Retain and follow all product safety and operating instructions. Observe all warnings in the operating instructions on the product.

To reduce the risk of bodily injury, electric shock, fire, and damage to the equipment, observe the following precautions.

ELECTRICAL SAFETY

This product is intended for use when supplied with power from the designated battery or power supply unit. Other usage may be dangerous and will invalidate any approval given to this product.

SAFETY PRECAUTIONS FOR PROPER GROUNDING INSTALLATION

CAUTION: Connecting to an improperly grounded equipment can result in an electric shock to your device.

This product is equipped with a USB Cable for connecting with desktop or notebook computer. Be sure your computer is properly grounded (earthed) before connecting this product to the computer. The power supply cord of a desktop or notebook computer has an equipment-grounding conductor and a grounding plug. The plug must be plugged into an appropriate outlet which is properly installed and grounded in accordance with all local codes and ordinances.

SAFETY PRECAUTIONS FOR POWER SUPPLY UNIT

- **Use the correct external power source**

A product should be operated only from the type of power source indicated on the electrical ratings label. If you are not sure of the type of power source required, consult your authorized service

provider or local power company. For a product that operates from battery power or other sources, refer to the operating instructions that are included with the product.

- **Handle battery packs carefully**

This product contains a Li-ion battery. There is a risk of fire and burns if the battery pack is handled improperly. Do not attempt to open or service the battery pack. Do not disassemble, crush, puncture, short external contacts or circuits, dispose of in fire or water, or expose a battery pack to temperatures higher than 60°C (140°F).



WARNING: Danger of explosion if battery is incorrectly replaced. To reduce risk of fire or burns, do not disassemble, crush, puncture, short external contacts, expose to temperature above 60° C (140° F), or dispose of in fire or water. Replace only with specified batteries. Recycle or dispose of used batteries according to the local regulations or reference guide supplied with your product.



- **Take extra precautions**

- Keep the battery or device dry and away from water or any liquid as it may cause a short circuit.
- Keep metal objects away so they don't come in contact with the battery or its connectors as it may lead to short circuit during operation.
- Do not use a battery that appears damaged, deformed, or discolored, or the one that has any rust on its casing, overheats, or emits a foul odor.

- Always keep the battery out of the reach of babies and small children, to avoid swallowing of the battery. Consult the doctor immediately if the battery is swallowed.
- If the battery leaks:
 - Do not allow the leaking fluid to come in contact with skin or clothing. If already in contact, flush the affected area immediately with clean water and seek medical advice.
 - Do not allow the leaking fluid to come in contact with eyes. If already in contact, DO NOT rub; rinse with clean water immediately and seek medical advice.
 - Take extra precautions to keep a leaking battery away from fire as there is a danger of ignition or explosion.

SAFETY PRECAUTIONS FOR DIRECT SUNLIGHT

Keep this product away from excessive moisture and extreme temperatures. Do not leave the product or its battery inside a vehicle or in places where the temperature may exceed 60°C (140°F), such as on a car dashboard, window sill, or behind a glass that is exposed to direct sunlight or strong ultraviolet light for extended periods of time. This may damage the product, overheat the battery, or pose a risk to the vehicle.

PREVENTION OF HEARING LOSS



CAUTION: Permanent hearing loss may occur if earphones or headphones are used at high volume for prolonged periods of time.

Note For France, Earphone (listed below) for this device have been tested to comply with the Sound Pressure Level requirement laid down

in the applicable NF EN 50332-1:2000 and/or NF EN 50332-2:2003 standards as required by French Article L. 5232-1.

- Earphone, manufactured by HTC, Model HS S300.

SAFETY IN AIRCRAFT

Due to the possible interference caused by this product to an aircraft's navigation system and its communications network, using this device's phone function on board an airplane is against the law in most countries. If you want to use this device when on board an aircraft, remember to turn off your phone by switching to Airplane Mode.

ENVIRONMENT RESTRICTIONS

Do not use this product in gas stations, fuel depots, chemical plants or where blasting operations are in progress, or in potentially explosive atmospheres such as fuelling areas, fuel storehouses, below deck on boats, chemical plants, fuel or chemical transfer or storage facilities, and areas where the air contains chemicals or particles, such as grain, dust, or metal powders. Please be aware that sparks in such areas could cause an explosion or fire resulting in bodily injury or even death.

EXPLOSIVE ATMOSPHERES

When in any area with a potentially explosive atmosphere or where flammable materials exist, the product should be turned off and the user should obey all signs and instructions. Sparks in such areas could cause an explosion or fire resulting in bodily injury or even death. Users are advised not to use the equipment at refueling points such as service or gas stations, and are reminded of the need to observe restrictions on the use of radio equipment in fuel depots, chemical plants, or where blasting operations are in progress. Areas with a potentially explosive atmosphere are often, but not always, clearly

marked. These include fueling areas, below deck on boats, fuel or chemical transfer or storage facilities, and areas where the air contains chemicals or particles, such as grain, dust, or metal powders.

ROAD SAFETY

Vehicle drivers in motion are not permitted to use telephony services with handheld devices, except in the case of emergency. In some countries, using hands-free devices as an alternative is allowed.

SAFETY PRECAUTIONS FOR RF EXPOSURE

- Avoid using your phone near metal structures (for example, the steel frame of a building).
- Avoid using your phone near strong electromagnetic sources, such as microwave ovens, sound speakers, TV and radio.
- Use only original manufacturer-approved accessories, or accessories that do not contain any metal.
- Use of non-original manufacturer-approved accessories may violate your local RF exposure guidelines and should be avoided.

INTERFERENCE WITH MEDICAL EQUIPMENT FUNCTIONS

This product may cause medical equipment to malfunction. The use of this device is forbidden in most hospitals and medical clinics.

If you use any other personal medical device, consult the manufacturer of your device to determine if they are adequately shielded from external RF energy. Your physician may be able to assist you in obtaining this information.

Turn your phone OFF in health care facilities when any regulations posted in these areas instruct you to do so. Hospitals or health care facilities may be using equipment that could be sensitive to external RF energy.

HEARING AIDS

Some digital wireless phones may interfere with some hearing aids. In the event of such interference, you may want to consult your service provider, or call the customer service line to discuss alternatives.

NONIONIZING RADIATION

Your device has an internal antenna. This product should be operated in its normal-use position to ensure the radiative performance and safety of the interference. As with other mobile radio transmitting equipment, users are advised that for satisfactory operation of the equipment and for the safety of personnel, it is recommended that no part of the human body be allowed to come too close to the antenna during operation of the equipment.

Use only the supplied integral antenna. Use of unauthorized or modified antennas may impair call quality and damage the phone, causing loss of performance and SAR levels exceeding the recommended limits as well as result in non-compliance with local regulatory requirements in your country. To assure optimal phone performance and ensure human exposure to RF energy is within the guidelines set forth in the relevant standards, always use your device only in its normal-use position. Contact with the antenna area may impair call quality and cause your device to operate at a higher power level than needed. Avoiding contact with the antenna area when the phone is IN USE optimizes the antenna performance and the battery life.

General Precautions

- **Avoid applying excessive pressure to the device**
Do not apply excessive pressure on the screen and the device to prevent damaging them and remove the device from your pants' pocket before sitting down. It is also recommended that you store the device in a protective case. Cracked display screens due to improper handling are not covered by the warranty.
 - **Device getting warm after prolonged use**
When using your device for prolonged periods of time, such as when you're talking on the phone, charging the battery or browsing the web, the device may become warm. In most cases, this condition is normal and therefore should not be interpreted as a problem with the device.
 - **Heed service markings**
Except as explained elsewhere in the Operating or Service documentation, do not service any product yourself. Service needed on components inside the device should be done by an authorized service technician or provider.
 - **Damage requiring service**
Unplug the product from the electrical outlet and refer servicing to an authorized service technician or provider under the following conditions:
 - Liquid has been spilled or an object has fallen onto the product.
 - The product has been exposed to rain or water.
 - The product has been dropped or damaged.
 - There are noticeable signs of overheating.
-

- The product does not operate normally when you follow the operating instructions.
 - **Avoid hot areas**
The product should be placed away from heat sources such as radiators, heat registers, stoves, or other products (including amplifiers) that produce heat.
 - **Avoid wet areas**
Never use the product in a wet location.
 - **Avoid using your device after a dramatic change in temperature**
When you move your device between environments with very different temperature and/or humidity ranges, condensation may form on or within the device. To avoid damaging the device, allow sufficient time for the moisture to evaporate before using the device.
- NOTICE:** When taking the device from low-temperature conditions into a warmer environment or from high-temperature conditions into a cooler environment, allow the device to acclimate to room temperature before turning on power.
- **Avoid pushing objects into product**
Never push objects of any kind into cabinet slots or other openings in the product. Slots and openings are provided for ventilation. These openings must not be blocked or covered.
-

- **Mounting accessories**

Do not use the product on an unstable table, cart, stand, tripod, or bracket. Any mounting of the product should follow the manufacturer's instructions, and should use a mounting accessory recommended by the manufacturer.

- **Avoid unstable mounting**

Do not place the product with an unstable base.

- **Use product with approved equipment**

This product should be used only with personal computers and options identified as suitable for use with your equipment.

- **Adjust the volume**

Turn down the volume before using headphones or other audio devices.

- **Cleaning**

Unplug the product from the wall outlet before cleaning. Do not use liquid cleaners or aerosol cleaners. Use a damp cloth for cleaning, but NEVER use water to clean the LCD screen.

Regulatory Agency Identifications

For regulatory identification purposes, your product is assigned a model number of **ROSE100**.

To ensure continued reliable and safe operation of your device, use only the accessories listed below with your **ROSE100**.

The Battery Pack has been assigned a model number of **ROSE160**.

Note This product is intended for use with a certified Class 2 Limited Power Source, rated 5 Volts DC, maximum 1 Amp power supply unit.

Telecommunications & Internet Association (TIA) safety information

- **Pacemakers**

The Health Industry Manufacturers Association recommends that a minimum separation of six inches be maintained between a handheld wireless phone and a pacemaker to avoid potential interference with the pacemaker. These recommendations are consistent with the independent research by and recommendations of Wireless Technology Research. Persons with pacemakers:

- Should ALWAYS keep the phone more than six inches from their pacemaker when the phone is turned ON.
- Should not carry the phone in a breast pocket.
- Should use the ear opposite the pacemaker to minimize the potential for interference. If you have any reason to suspect that interference is taking place, turn the phone OFF immediately.

- **Hearing Aids**

Some digital wireless phones may interfere with some hearing aids. In the event of such interference, you may want to consult your service provider, or call the customer service line to discuss alternatives.

- **Other Medical Devices**

If you use any other personal medical device, consult the manufacturer of your device to determine if they are adequately shielded from external RF energy. Your physician may be able to assist you in obtaining this information.

Turn the phone OFF in health care facilities when any regulations

posted in these areas instruct you to do so. Hospitals or health care facilities may be using equipment that could be sensitive to external RF energy.

WEEE Notice

The Directive on Waste Electrical and Electronic Equipment (WEEE), which entered into force as European law on 13th February 2003, resulted in a major change in the treatment of electrical equipment at end-of-life.

The purpose of this Directive is, as a first priority, the prevention of WEEE, and in addition, to promote the reuse, recycling and other forms of recovery of such wastes so as to reduce disposal.



The WEEE logo (shown at the left) on the product or on its box indicates that this product must not be disposed of or dumped with your other household waste. You are liable to dispose of all your electronic or electrical waste equipment by relocating over to the specified collection point for recycling of such hazardous waste. Isolated collection and proper recovery of your electronic and electrical waste equipment at the time of disposal will allow us to help conserving natural resources. Moreover, proper recycling of the electronic and electrical waste equipment will ensure safety of human health and environment. For more information about electronic and electrical waste equipment disposal, recovery, and collection points, please contact your local city center, household waste disposal service, shop from where you purchased the equipment, or manufacturer of the equipment.

RoHS Compliance

This product is in compliance with Directive 2002/95/EC of the European Parliament and of the Council of 27 January 2003, on the restriction of the use of certain hazardous substances in electrical and electronic equipment (RoHS) and its amendments.

