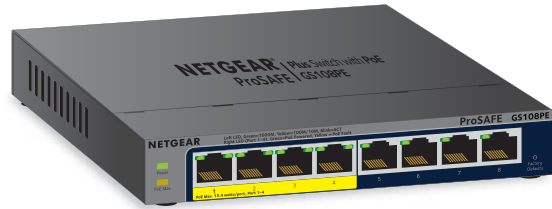
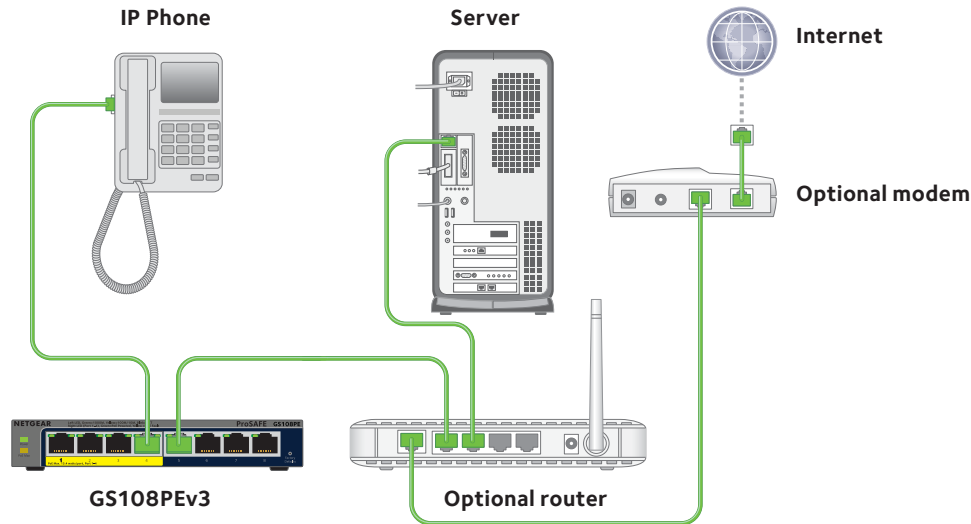


# Installation

## ProSAFE Plus 8-Port Gigabit Switch with 4-Port PoE GS108PEv3

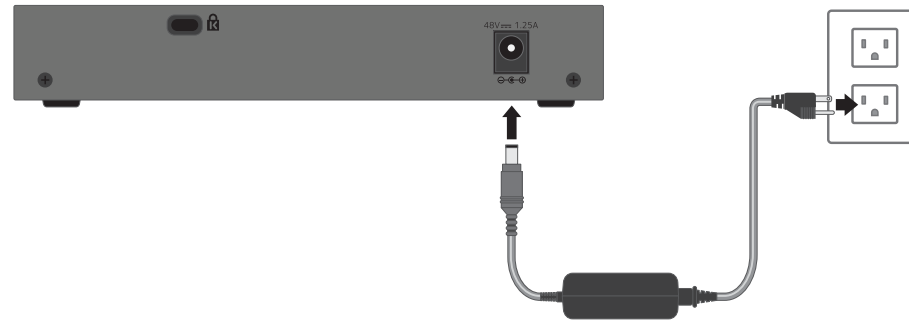


### Step 1. Connect the equipment.

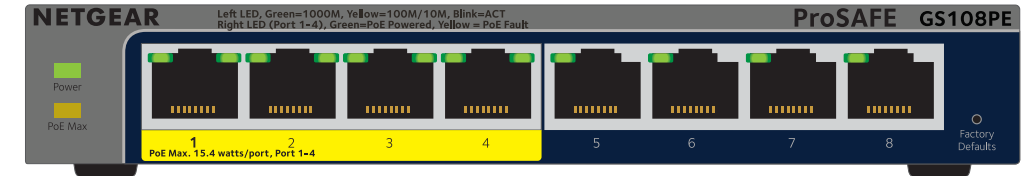


**NETGEAR**

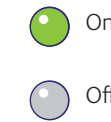
### Step 2. Connect to power.



### Step 3. Check the status.



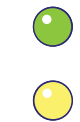
#### Power LED



On

Off

#### Right PoE LEDs (Ports 1-4)



PoE in use

PoE halted

No PoE use (off)

#### Left Port LEDs (Ports 1-8)



1000 Mbps link

10/100 Mbps

Activity (blinking)

No link (off)

#### PoE Max. LED



Less than 7W of PoE power is available.

PoE Max. LED was activated in the previous two minutes (blinking).

PoE ports are working normally (off).

## Set Up the Switch Configuration Utility

Plus switches are plug and play. You can install a configuration utility to select additional options to manage and customize the switch for your network. This utility is on the resource CD that was shipped with the switch.

**Note:** The configuration utility is installed on your computer and is supported only on Windows.

### ➤ To install the configuration utility:

1. Insert the resource CD into a computer that is connected to the switch.
2. Click the **Install ProSAFE Plus Utility** link and follow the prompts to install the program.

The switch configuration utility is installed in the program directory of your computer and a ProSAFE Plus Utility icon is placed on your desktop.

### ➤ To configure the switch:

1. Double-click the **ProSAFE Plus Utility** icon.

The configuration home screen displays a list of plus switches that it discovers on the local network.

2. Select the switch that you want to configure.  
You are asked to enter the password for the switch.
3. Enter the switch's password in the **password** field.  
The switch's default password is password.

4. Use the utility to configure the switch.

For a description of Plus features, see the *ProSAFE Plus Switch Configuration Utility User Guide*. You can access the user guide through links on the Help tab of the utility or on the resource CD.

**Note:** You can also access and configure the switch directly through its web-based user interface.

## Specifications

Specification	Description
Network interface	RJ-45 connector for 10BASE-T, 100BASE-TX, or 1000BASE-T
Network cable	Category 5e (Cat 5e) or better Ethernet cable
Ports	8
Power adapter	48V @ 1.25 A DC input
Power consumption	60W max.
PoE power budget	53W max. all PoE ports (1–4), 15.4W max. per PoE port
Weight	0.538 kg (1.19 lb)
Dimensions (W x D x H)	158 mm x 101 mm x 29 mm 6.2 in. x 4 in. x 1.14 in.
Operating temperature	0–40°C (32–104°F)
Operating humidity	10%–90% relative humidity, noncondensing
Electromagnetic compliance	CE Class A, FCC 15 Class A, VCCI Class A, RCM Class A, EAC, KCC, CCC
Safety agency approvals	CE mark, CB, CCC, EAC

## Support

Thank you for selecting NETGEAR products.

After installing your device, locate the serial number on the label of your product and use it to register your product at <https://my.netgear.com>.

You must register your product before you can use NETGEAR telephone support. NETGEAR recommends registering your product through the NETGEAR website. For product updates and web support, visit <http://support.netgear.com>.

NETGEAR recommends that you use only the official NETGEAR support resources.

For the current EU Declaration of Conformity, visit [http://support.netgear.com/app/answers/detail/a\\_id/11621/](http://support.netgear.com/app/answers/detail/a_id/11621/).

For regulatory compliance information, visit <http://www.netgear.com/about/regulatory/>.

See the regulatory compliance document before connecting the power supply.



201-18051-02

May 2014

**NETGEAR, Inc.**  
350 East Plumeria Drive  
San Jose, CA 95134, USA

NETGEAR, the NETGEAR logo, and Connect with Innovation are trademarks and/or registered trademarks of NETGEAR, Inc. and/or its subsidiaries in the United States and/or other countries. Information is subject to change without notice. © NETGEAR, Inc. All rights reserved.