

# OWNER'S GUIDE

GALAXY NEXUS



# GALAXY nEXUS

A L L   D I G I T A L  
A N D R O I D   S M A R T P H O N E

## **Owner's Guide**

Please read this guide before operating your  
phone, and keep it for future reference.

# Important Customer Information

## **DATA PLANS AND FEATURES: Content and Internet Access**

Many services and applications offered through your device may be provided by third parties. Before you use, link to or download a service provided by a third party, or an application such as a non-Verizon Wireless location-based GPS-type service, chat room, marketplace or social network from your device, you should review the terms of such service or application and applicable privacy policy. Personal information you submit may be read, collected or used by the service or application provider and/or other users of those forums.

Verizon Wireless is not responsible for any information, content or services you access, download or use from the Internet. You are responsible for maintaining virus and other Internet security protections when accessing service. For additional information, visit the Verizon Content Policy at [responsibility.verizon.com/contentpolicy](https://responsibility.verizon.com/contentpolicy). Your Verizon Wireless Customer Agreement terms and conditions and certain other specially identified terms govern your use of any Verizon Wireless products and services.

## **Intellectual Property**

All Intellectual Property, as defined below, owned by or which is otherwise the property of Samsung or its respective suppliers relating to the SAMSUNG Phone, including but not limited to, accessories, parts, or software relating there to (the "Phone System"), is proprietary to Samsung and protected under federal laws, state laws, and international treaty provisions. Intellectual Property includes, but is not limited to, inventions (patentable or unpatentable), patents, trade secrets, copyrights, software, computer programs, and related documentation and other works of authorship. You may not infringe or otherwise violate the rights secured by the Intellectual Property. Moreover, you agree that you will not (and will not attempt to) modify, prepare derivative works of, reverse engineer, decompile, disassemble, or otherwise attempt to create source code from the software. No title to or ownership in the Intellectual Property is transferred to you. All applicable rights of the Intellectual Property shall remain with SAMSUNG and its suppliers.

# Samsung Telecommunications America (STA), LLC

Headquarters:

1301 E. Lookout Drive

Richardson, TX 75082

Toll Free Tel:

Customer Care Center:

1000 Klein Rd.

Plano, TX 75074

1.888.987.HELP (4357)

Internet Address: <http://www.samsungusa.com>

© 2011 Samsung Telecommunications America, LLC is a registered trademark of Samsung Electronics America, Inc. and its related entities.

Do you have questions about your Samsung Mobile Phone?

For 24 hour information and assistance, we offer a new FAQ/ARS System (Automated Response System) at:

<http://www.samsung.com/us/support>

GH68-36149A

Printed in USA

# Legal

© 2011 Google Inc. All rights reserved.

Google, the stylized Google logo, Android, the stylized Android logo, Nexus, and the stylized Nexus logo are trademarks of Google Inc. All other company and product names may be trademarks of the companies with which they are associated.

Availability of Google applications, services, and features may vary by country, carrier, and manufacturer.

For more information about your Galaxy Nexus phone, visit [www.vzw.com/galaxynexus](http://www.vzw.com/galaxynexus).

© Samsung Telecommunications America, LLC ("Samsung"). Samsung, Galaxy, and Super AMOLED are all trademarks of Samsung Electronics Co., Ltd. and/or its related entities. All product and brand names are trademarks or registered trademarks of their respective companies. Screen images simulated. Appearance of the phone may vary.

© Verizon Wireless. Verizon Wireless, and the Verizon Wireless logos are trademarks of Verizon Trademark Services LLC. All company names, trademarks, logos and copyrights not property of Verizon Wireless are the property of their respective owners.

## Open Source Software

Some software components of this product incorporate source code covered under GNU General Public License (GPL), GNU Lesser General Public License (LGPL), OpenSSL License, BSD License and other open source licenses. To obtain the source code covered under the open source licenses, please visit:

<http://opensource.samsung.com>.

## **Disclaimer of Warranties; Exclusion of Liability**

EXCEPT AS SET FORTH IN THE EXPRESS WARRANTY CONTAINED ON THE WARRANTY PAGE ENCLOSED WITH THE PRODUCT, THE PURCHASER TAKES THE PRODUCT "AS IS", AND SAMSUNG MAKES NO EXPRESS OR IMPLIED WARRANTY OF ANY KIND WHATSOEVER WITH RESPECT TO THE PRODUCT, INCLUDING BUT NOT LIMITED TO THE MERCHANTABILITY OF THE PRODUCT OR ITS FITNESS FOR ANY PARTICULAR PURPOSE OR USE; THE DESIGN, CONDITION OR QUALITY OF THE PRODUCT; THE PERFORMANCE OF THE PRODUCT; THE WORKMANSHIP OF THE PRODUCT OR THE COMPONENTS CONTAINED THEREIN; OR COMPLIANCE OF THE PRODUCT WITH THE REQUIREMENTS OF ANY LAW, RULE, SPECIFICATION OR CONTRACT PERTAINING THERETO. NOTHING CONTAINED IN THE INSTRUCTION MANUAL SHALL BE CONSTRUED TO CREATE AN EXPRESS OR IMPLIED WARRANTY OF ANY KIND WHATSOEVER WITH RESPECT TO THE PRODUCT. IN ADDITION, SAMSUNG SHALL NOT BE LIABLE FOR ANY DAMAGES OF ANY KIND RESULTING FROM THE PURCHASE OR USE OF THE PRODUCT OR ARISING FROM THE BREACH OF THE EXPRESS WARRANTY, INCLUDING INCIDENTAL, SPECIAL OR CONSEQUENTIAL DAMAGES, OR LOSS OF ANTICIPATED PROFITS OR BENEFITS.

SAMSUNG IS NOT LIABLE FOR PERFORMANCE ISSUES OR INCOMPATIBILITIES CAUSED BY YOUR EDITING OF REGISTRY SETTINGS, OR YOUR MODIFICATION OF OPERATING SYSTEM SOFTWARE.

USING CUSTOM OPERATING SYSTEM SOFTWARE MAY CAUSE YOUR DEVICE AND APPLICATIONS TO WORK IMPROPERLY.

# Contents

## **Your phone and accessories 2**

Phone and accessories 3

4G LTE SIM card 4

## **Getting to know your phone 5**

## **Inserting the 4G LTE SIM card and battery 7**

Remove the phone's back cover 7

Replace the phone's back cover 8

Insert or remove a 4G LTE SIM card 9

Insert the battery 11

Remove the battery 12

## **Charging your phone 13**

## **Turning the phone on and off 15**

Turn on the phone 15

Turn off the phone 15

# Your phone and accessories

Your Galaxy™ Nexus™ phone comes with a number of accessories, including a headset and wall/USB charger. For safety reasons, the battery is not shipped inside the phone, so you need to insert it and charge it fully before using your phone. This guide describes the parts of your phone, how to install and charge the battery, how to turn the phone on and off, and other useful information.

For more information about using the Android™ mobile technology platform that runs on your phone, including the basics of using it to place phone calls and how to use its applications to browse the web, read email, and so on, visit your carrier's support site, or refer to the *Android User's Guide*, available from [www.vzw.com/galaxynexus](http://www.vzw.com/galaxynexus).

## In this section

**Getting to know your phone**

**Inserting the 4G LTE SIM card and battery**

**Charging your phone**

**Turning the phone on and off**



# Phone and accessories

Your Galaxy™ Nexus™ phone comes with the following accessories.

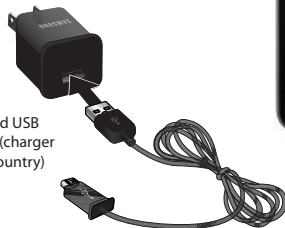
Quick Reference Guide,  
RF Brochure,  
Health & safety  
and Warranty  
booklet &  
Important  
Customer  
Information



Galaxy Nexus  
phone



Battery



Charger and USB  
data cable (charger  
varies by country)



Headset

\*Images simulated, actual contents may vary

## 4G LTE SIM card

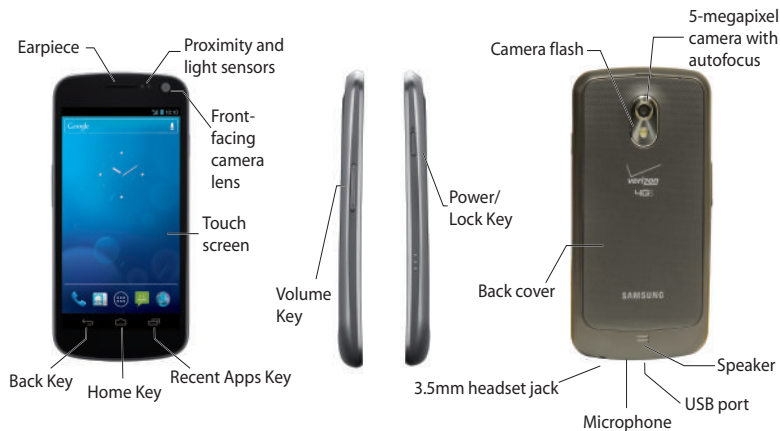
Your phone uses a 4G LTE SIM (Subscriber Identity Module). The 4G LTE SIM is a small, rectangular plastic card that stores your phone number, information about your wireless service, and other information such as messages and contacts.

If you purchased your phone at a Verizon Wireless store, the SIM card is activated and ready to use. If you ordered a new phone, the card may need to be activated before you can use it. For more information about activating the SIM card, visit: <http://www.verizonwireless.com/4GSIM>.

**Warning!** Do not bend or scratch the SIM card. Take care when handling, installing, or removing the SIM card, and avoid exposing the SIM card to static electricity, water, or dirt. Keep the SIM card out of reach of small children.

See “Inserting the 4G LTE SIM card and battery” on page 7 to learn how to insert or remove the battery and 4G LTE SIM card.

# Getting to know your phone



Before you use the phone, insert the battery and charge it fully. (See "Inserting the 4G LTE SIM card and battery" on page 7 and "Charging your phone" on page 13.)

Other sections in this chapter describe the use and function of the headset, turning the phone on and off, and more.

Your carrier's support site and the *Android User's Guide* (available from [www.vzw.com/galaxy nexus](http://www.vzw.com/galaxy nexus)) describe how to place calls and other basic features of the phone, including turning it on for the first time.

Be sure to keep the front and back camera lenses clean with a lint-free cloth. Smudges and fingerprints can distort your pictures. The back camera's LED flash is next to the lens. Taking pictures and shooting videos are described in the *Android User's Guide*.

# Inserting the 4G LTE SIM card and battery

To install or replace the battery or 4G LTE SIM card, you must remove the phone's back cover. You must insert the battery and 4G LTE SIM card before you can use the phone.

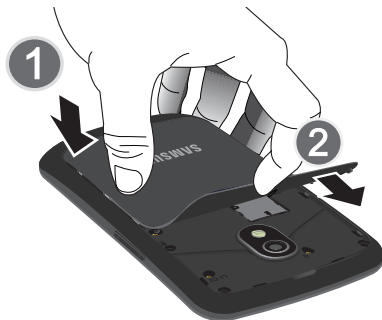
## Remove the phone's back cover

- ▶ To remove the battery cover, pull up using the slot provided, while lifting the cover off the phone.



## Replace the phone's back cover

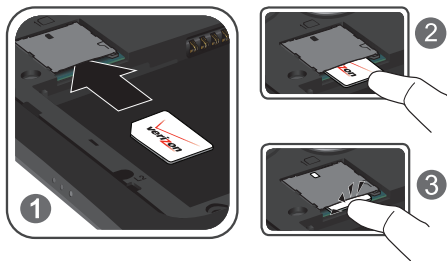
- ▶ To replace the battery cover, align the tabs, then press down on the bottom and top of the battery cover. Continue to press the edges of the cover until the cover snaps into place.



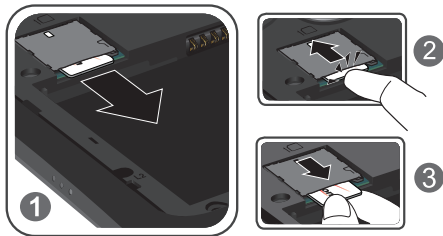
## Insert or remove a 4G LTE SIM card

You must remove the phone's back cover and remove the battery to insert or remove the 4G LTE SIM card. If the phone is on, turn it off before removing the battery or 4G LTE SIM card.

- ▶ Insert the 4G LTE SIM card by aligning it with the notch to the upper right and gold contacts facing down, then sliding it into the slot.



- Remove the 4G LTE SIM card by pressing in gently with the tip of your finger, then sliding it out of the slot.





## Insert the battery

You must open the phone's back cover to insert the battery.

- 1** Remove the back cover.  
See "Remove the phone's back cover" on page 7.
- 2** Align the gold contacts on the battery with the gold contacts on the phone, then gently press the battery into place.



## Remove the battery

You must open the phone's back cover to remove the battery. If the phone is on, turn it off before removing the battery.

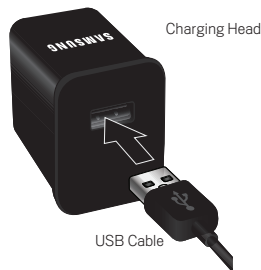
- 1** Turn off the phone.  
See "Turning the phone on and off" on page 15.
- 2** Remove the back cover.  
See "Remove the phone's back cover" on page 7.
- 3** Use your finger to lift the battery by the notch on the battery.

# Charging your phone

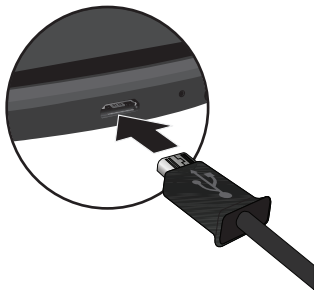
Before you can use your phone, you must charge it fully.

In addition to charging from an AC outlet, the phone also charges when it is connected to a computer's USB port with the included USB cable. For information about connecting the phone to a computer, see the Android User's Guide.

- 1 Carefully slide the USB cable into the Charging Head. Make sure the connection is secure.



- 2 Insert the USB cable into the USB Power/Accessory Port.



**3** Plug the Charging Head into a standard AC power outlet.

**Warning!** Please use only an approved charging accessory to charge your phone. Improper handling of the charging port, or use of an incompatible charger, may cause damage to your phone and void the warranty.

# Turning the phone on and off

It's important to fully charge the battery before turning on your phone.

Use the  **Power/Lock Key** on the top right side of your phone to turn the phone on and off.


## Turn on the phone

- ▶ Press and hold the  **Power/Lock Key**.

The first time you turn on the phone, you are welcomed to Android and prompted to sign into your Google Account. For more information, consult your carrier and the *Android User's Guide*.

Depending on your phone's settings, you may be prompted to enter a Personal Identification Number (PIN) to unlock your 4G LTE SIM card when you turn on the phone.

## Turn off the phone

- 1 Press and hold the  **Power/Lock Key** until a menu displays.
- 2 Touch **Power off** in the menu.
- 3 Touch **OK** when asked to confirm that you want to turn off the phone.

For more about working with the touchscreen and menus, see the *Android User's Guide*.