

The book for your **Vodafone Simply** mobile phone



A reassuringly brief
guide to using your
new mobile phone



Vodafone Simply
Sagem VS1

Vodafone Simply

Vodafone Group Services Ltd, The Connection, Newbury, Berkshire, RG14 2FN.

© The Vodafone Group 2005. VODAFONE, the Vodafone logos and Vodafone Simply are trade marks of the Vodafone Group.





Vodafone Simply

The phone with
common sense
as a feature

Contents

- 2. How to insert the SIM card
- 4. How to charge the battery
- 6. So what do all these buttons do?
- 8. How to use the buttons on the phone
- 10. What does everything on my Home Screen mean?
- 12. How do I add people to my Phone Book?
- 14. How to make and receive calls
- 16. How to send a text message
- 17. How to receive a text message
- 18. How do I set reminders?
- 19. How do I ask for help?
- 20. How do I adjust the clock and other settings?
- 21. What is my Phone Book Manager?
- 22. How do I use my Phone Book Manager?
- 24. How do I create new contacts and transfer them to my phone?
- 25. How are my contacts saved?
- 26. The importance of regularly backing up
- 27. How do I restore my contacts?
- 28. How do I close my Phone Book Manager safely
- 29. What's in the box
- 30. A closer look at the detail

How to insert the SIM card

You wanted a mobile phone that's sophisticated yet easy to use and here it is in your hands! Naturally you're eager to start using it, but first you need to **insert the SIM card**.

The SIM card lives under the battery. Here's how to insert it:

- Ensure that the phone is switched off and the charger is disconnected from the bottom of the phone.
- Turn the phone over and push the lock button upwards.
- Remove the back cover by lifting the bottom end first.
- If the battery is already inside remove it.
- Hold your SIM card with the cut corner oriented as shown and then slide it into the card holder face down.
- Replace the battery first.
- Replace the back cover clicking in the top edge then the lower end and push the catch downwards into the locked position.



Lock

What is a SIM card?

Every mobile phone has a SIM card. (Subscriber Identity Module). This is a microchip that holds your personal information such as your phone number, and the names and numbers of your friends and family. Your phone won't work without it. If you already have contacts on your SIM card these can be transferred across in most cases.

How to charge the battery

Your phone is powered by a rechargeable battery. This needs to be **charged** for at least **4 hours** before you can make your first call. Ready? Charge!

Charging the battery

- Plug the charger into the mains and the phone.
- The phone is now charging. The battery icon moves from left to right.
- When the icon stops moving and the percentage of charge shows 100% the battery is fully charged.
- Disconnect the charger.



Charging
cradle



You can always check the battery icon to see how much power you have left. When it's red you know it's time to recharge. You will also see a message on the screen when you need to recharge it.

Recharge for at least 15 minutes before making another call so your phone doesn't cut out in the middle of a call! (Your battery has a standby time of up to 12 days or you can make calls of up to 4 hours before recharging again.)

When you are at home, just sit the phone in the charging cradle and plug it into the mains. That way your phone will always be charged when you need it and you will always be able to find it.

So what do all these buttons do?

At the top of the phone you'll see **three special buttons**, each of which has a dedicated function. Basically this means less searching through menus.

- **On/off** – Turns the phone on and off, just press and hold down the button on the top.
- **Home** – Returns you to the 'Home Screen', the original screen that you see when you switch on the phone.
- **Contacts** – Opens your phone book where you keep your family and friends' details.
- **Log** – Where you can find all your messages in one place. Just press this button and you can access your voice and text messages, missed calls, and reminders.



How to use the buttons on the phone

On the side of the phone you'll see three more buttons:

- **Ringer Setting (right side)** – Easily set the ringer to loud, **normal**, vibrate or silent.
- **Volume Key (left side)** – While you are in a call you can use this button to adjust the volume.
- **Button Lock (right side)** – Lock the keypad to avoid making accidental calls!

Below the screen you'll find the main function keys:

- **Hello** – Answer incoming calls with this key.
- **Goodbye** – Hang up with this key*.
- **Up/Down** – To navigate through menus and phone book entries.
- **Menu Keys** – Press these buttons to select the command written above them on the screen.
- **Back** – Brings you back to the previous screen.



*This key is only used for ending a call.

What does everything
on my Home screen mean?

On the '**Home**' screen you will see the following settings:

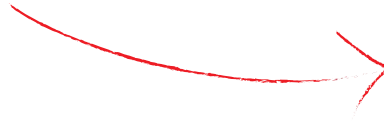
Clock – Displays the time.

Ringer Setting – Loud, **normal**, vibrate or silent as set by the button on the side of the phone.

Battery Indicator – Shows the amount of power left.

Network Signal – Shows the strength of your connection to the mobile phone network.

Your Number – Handy when someone asks you for your phone number and you go, "It's... oh, wait a minute, what is it again?"



Home



How do I add people to my Phone book?

There are some phone numbers you'll want to call again and again so it makes sense to add these to your **Phone book**. Then you can access them easily.

- Press the 'Contacts' button (the one with people on it.)
- Select 'ADD NEW CONTACT'.
- Enter a name using the number keys and confirm by clicking 'OK'.
- Enter the contacts' phone number.
- Choose 'SAVE'.

You can also save a number right after you've made or received a phone call, or a text message from someone who is not yet in your 'Phone book'.

A prompt will come up asking if you want to save that number. Simply click on 'YES' and enter a name to go with the number.

- To delete someone from your phone book first select the name then choose 'DELETE CONTACT'.

Contacts



How to make and receive calls

The most basic way to **make a call** is to key in the number and press the green **'Hello'** key. One advantage of a mobile phone is that you can also store people's names and numbers in your mobile phone book and call them more easily.

To call someone

- Remember the **'Contacts'** button? (It's the one with people on it.) One click opens your Phone book. From here use the **'Up/Down'** button to find the name of the person you want to call. You can also type in the first letters of the name of the person you want to call.
- Now simply press the green **'Hello'** key.
- End the call by pressing the red **'Goodbye'** key.
- Make sure you are in an area with sufficient coverage to make calls. The strength of the network is indicated on the **'Home'** screen.

To answer a call:

- Answer incoming calls by pressing the same green **'Hello'** key.

You can also make a hands-free call using the speakerphone.

To do this:

- Dial the number.
- Press the green **'Hello'** key.
- Activate the hands-free speaker functionality by selecting the **'Speaker'** command which will appear on your screen.

You can receive and make calls when the phone is sitting in the charging cradle.



How to send a text message

You might think **text messaging** is strictly for the kids, but why should they have all the fun? It's also great at times when you can't (or don't want to) speak to someone, just send a text message.

To do this:

- Press the '**Contacts**' button (the one with the people on it) to open your Phone book.
- Select the person you want to text. (If that person is not in your Phone book, why not add the contact now? see "How do I add people to my Phone book")
- Choose '**TEXT**'.
- Write your message using the number buttons*. Each button shows several letters.
- Press the button once to select the first letter, twice to select the second letter and so on.
- Press the '**#**' key to access punctuation and special symbols. Press the '**0**' key to insert a blank space.
- Press the '**CLEAR**' key to correct mistakes.
- When you're happy with the message go to '**OPTIONS**' and select '**SEND**'.
- You can take your time writing a message as you will not be charged until the message is sent.

Predictive text is also available on this phone. To change from non-predictive to predictive text press the '' key.

How to receive a text message

You can access all new messages by pressing the '**Log**' button.

When someone sends you a text message you'll be alerted by a short tone*. Also the '**Log**' button (at the top of the phone) will flash blue.

To read the message:

- Press the '**Log**' button.
- Select the message and open.
- Select '**OPTIONS**' to save, delete or forward the message.

Voice messages: When someone leaves you a voice message, you can listen to it by pressing the '**Log**' button and selecting '**Voice mail**' and then '**Call**'. You can also access your voicemail with the usual shortcode. To listen to a voicemail again, press the '**Log**' button and choose '**Voice mail**'.



*Only when ringer setting loud or normal is chosen.

How do I set reminders?

You might forget someone's birthday, but you can instruct the phone to **remind you** of any important date.

- Press the 'Contacts' button.
- Select a person.
- Choose 'ADD REMINDER'.
- Select the type of reminder and follow the instructions on the screen.
- You will be reminded at 9am on the reminder date.



How do I ask for help?

When you're lost it makes sense to ask for directions, but what if you get lost in your own phone? Well, this phone can help you. There are a number of built in **tips** that should help you on your way.

- To access the full collection of tips from the 'HOME' screen press 'Settings' and then 'All Tips'.



How do I adjust the clock
and other settings?

- From the 'Home' screen select 'SETTINGS'.
- Choose the setting you want to adjust, for example 'ALARM CLOCK' or 'RING TONE', etc.
- Follow the prompts.



What is my Phone Book Manager?

The Vodafone Simply mobile phone includes PC software that helps you safely store all your contacts on your PC, so that you can recover them if you ever lose or misplace your phone.

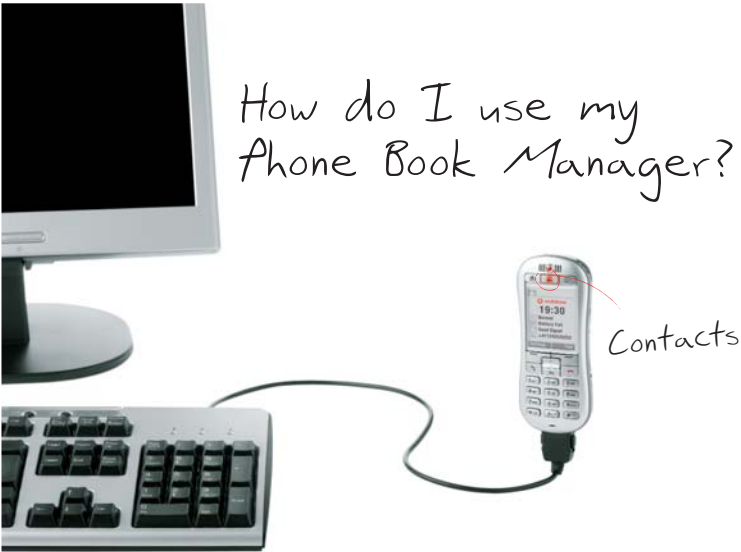
What's more, this feature allows you to edit contacts on your PC and transfer them to your phone. So instead of spending hours punching in numbers into your new phone you can now use your PC's large keyboard and screen to update contacts easily!

You've spent time building up a list of contacts on your phone, the last thing you want to do is lose them all! That's why you should back up your contacts on a PC. This manual will help you do it.

PC cable



How do I use my Phone Book Manager?

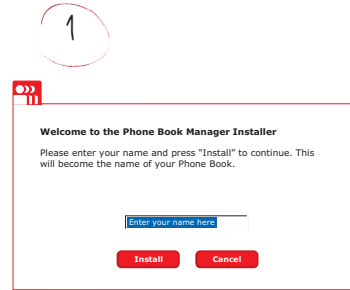


1. Turn on your phone (and enter your PIN if you need to).
2. Connect your phone to your PC* using the PC cable supplied in the box.
3. The Phone Book Manager that accompanies your Vodafone Simply mobile phone will automatically install on your PC. It might take several minutes to complete when you connect for the first time.

4. Is the middle 'Contacts' button illuminated red on your phone?
Good. This means you are properly connected.
If not, check that the cable is properly connected to both the phone and the PC and that the phone is switched on.

*You will need a PC running Windows XP or Windows 2000 with Service Pack 3 and above to operate the Phone Book Manager.

Accessories in the box vary by country



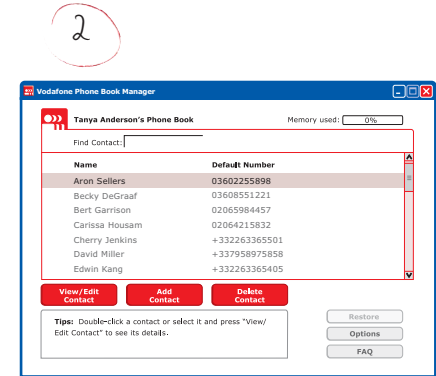
Please note that while connected, you will only have limited access to your phone's functions.

5. Enter your name and click 'Install'. (See figure 1)

Now you will see the Phone Book Manager on your screen. (See figure 2)

At this stage, all contacts that already exist on your phone will automatically be transferred to your PC. Every time you connect your phone to your PC, your contacts will be updated from your phone onto your PC and vice versa.

Note: Detection of your phone may take up to 30 seconds each time you plug it in.



To enter new numbers, click 'Add Contact'. A blank contact page like the one above will appear where you can enter the name and telephone number(s), and then click 'Save'. As soon as you save contacts on your PC they are automatically transferred to your phone.

How do I create new contacts and transfer them to my phone?

3

Now let's work on transferring your paper address book contents to your phone via your PC. (See figure 3)

4

You can also enter birthday, anniversary, and customised reminders by clicking the 'Reminders' tab. Your Vodafone Simply mobile phone will then alert you of important dates in your life (at 9.00am on the reminder date). (See figure 4)

5

If you want to add more numbers for each contact, like 'mobile' or 'office number', click on 'Add Number' and select the pre-defined labels and type in the number. You can customise these labels, too; e.g. 'School', 'Country', etc. You can add up to 6 numbers per contact. (See figure 5)

6

Always remember to press the 'Save' button. Your contacts are saved to your phone every time you click the 'Save' button. If you want to view or edit your contacts, click 'View/Edit Contact'. If you want to delete, click 'Delete Contact'. (See figure 6)



The importance of regularly 'Backing Up'

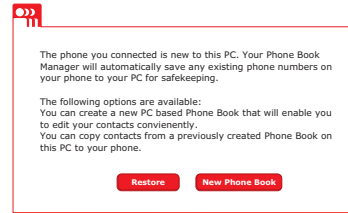


Once you've been using your mobile phone for a while you may have entered a lot of new contacts onto your phone directly. It's important that you 'Back Up' your contacts regularly to your PC in case you ever lose your phone. How? Just connect your phone to your PC and all your contacts on your phone will be automatically backed up onto your PC. It's that simple.



How do I restore my contacts?

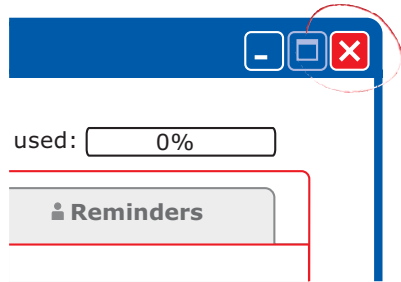
7



What if you accidentally delete your contacts or lose your phone? Well, fortunately you have a 'Back Up' of your contacts safely stored on your PC. To restore, connect your replaced Vodafone Simply mobile phone to your PC and you will be prompted to restore your old 'Phone Book'. (See figure 7)

Alternatively, you can access the 'Back Up' file containing your contact list from your 'My Documents' folder on your PC and print it out for your convenience. There is no need to connect your phone to access this file (file name [phonebook name and date e.g. luke140105.csv]).

How do I close my Phone Book Manager safely?



To close the application click the 'X' in the top right corner of the screen and then disconnect your phone from the PC cable. As long as you pressed 'Save' all, your contacts will be safely stored!

If you accidentally disconnected the cable first, you will be prompted to close the application safely.

It is possible to connect more than one Vodafone Simply mobile phone on the same PC if for example another member of your family is also using a Vodafone Simply mobile phone. You do not need to go through the installation process again as you will be connected to your Phone Book Manager automatically.

What's in the box?*

Your phone comes with several useful accessories.



The charging cradle. You can assemble it quite easily. As soon as you take the cradle out of the box, follow the indications on the sticker on your cradle to see how to connect your charging cable to the cradle.



A hands-free headset.



A PC cable for connecting to a personal computer so that you can back up your contacts and numbers.

For more information visit
www.vodafone.com

*Accessories in the box may vary by country.

A closer look at the detail

Exposure to Radio Frequency Signals

Your wireless handheld portable phone is a low power radio transmitter and receiver. When it is ON, it receives and also sends out frequency (RF) signals.

In August, 1996, the Federal Communications Commissions (FCC) adopted RF exposure guidelines with safety levels for handheld wireless phones. Those guidelines are consistent with the safety standards previously set by both U.S. and international standards bodies:

ANSI C95.1 (1992)*

NCPR Report 86 (1986)*

ICNIRP (1996)*

(*) American National Standards Institute; National Council on Radiation Protection and Measurements; International Commission on Non-Ionizing Radiation Protection.

Those standards were based on comprehensive and periodic evaluations of the relevant scientific literature. For example, over 120 scientists, engineers, and physicians from universities, government health agencies, and industry reviewed the available body of research to develop the ANSI Standard (C95.1).

The design of your phone complies with the FCC guidelines (and those standards).

For body worn operation, this phone has been tested and meets FCC RF exposure guidelines when used with an accessory that contains no metal and that positions the handset a minimum of 1.5 cm from the body.

Use of other accessories may not ensure compliance with FCC RF exposure guidelines.

Care and safety information

SAR

This phone complies with European requirements governing exposure to radio waves. Your phone is a transmitter/receiver. It has been designed and manufactured to comply with radio frequency energy exposure limits recommended by the Council of the European Union and the ICNIRP for the entire population. These limits were established by independent scientific agencies on the basis of in-depth and regular evaluations of scientific studies. The limits include a large safety margin that is intended to guarantee the safety of all, irrespective of age or state of health.

The exposure standard for phones uses a unit of measure called the SAR, or Specific Absorption Rate. The SAR limit recommended by the Council of the European Union and the ICNIRP is 2 W/kg. Tests were conducted on a standardised usage position basis, with the phone transmitting at its maximum level certified in all its frequency bands. Although the standardised measurement is done at maximum power, the real SAR of the phone in use is generally very far below the maximum value.

The phone was designed to operate at the power level strictly necessary to ensure communication with the network. In general, the closer you are to a base station, the lower the power at which the phone will transmit.

Validation of conformity with European directive 1999/5 (directive R&TTE) is a pre-requisite for introducing any model of phone onto the market. Protection of health and the safety of the public and the user are a vital requirement of this directive. This model's maximum SAR value measured at the compliance test for use at the ear was 0.64 W/kg. Although differences may exist from one phone to the other and depending on position, all comply with European regulations.

Advice for limiting exposure to radiofrequency (RF) fields

For individuals concerned about limiting their exposure to RF fields, the World Health Organization (WHO) provides the following advice:

Precautionary measures: Present scientific information does not indicate the need for any special precautions for the use of mobile phones. If individuals are concerned, they might choose to limit their own or their

children's' RF exposure by limiting the length of calls, or using "hands-free" devices to keep mobile phones away from the head and body.

Further information on this subject can be obtained from the WHO home page <http://www.who.int/peh-emf> WHO Fact sheet 193: June 2000.

Safety

Never attempt to disassemble your phone. You alone are responsible for how you use your phone and any consequences of its use.

As a general rule, always switch off your phone wherever the use of a phone is prohibited.

Use of your phone is subject to safety measures designed to protect users and their environment.

Do not use your phone in damp areas (bathroom, swimming pool...). Protect it from liquids and other moisture.

Do not expose your phone to extreme temperatures lower than - 10°C and higher than + 55°C.

The physicochemical processes created by chargers impose temperature limits when charging the battery. Your phone automatically protects the batteries in extreme temperatures.

Do not leave your phone within the reach of small children (certain removable parts may be accidentally ingested).

Electrical safety

Only use the chargers listed in the manufacturer's catalogue. Using any other charger may be dangerous; it would also invalidate your warranty. Line voltage must be exactly the one indicated on the charger's serial plate.

Aircraft safety

When travelling by plane, you will need to switch your phone off when so instructed by the cabin crew or the warning signs.

Using a mobile phone may be dangerous to the operation of the aircraft and may disrupt the phone network.

Its use is illegal and you could be prosecuted or banned from using cellular networks in the future if you do not abide by these regulations.

Explosive materials

Please comply with warning signs at petrol station asking you to switch your phone off. You will need to comply with radio equipment usage restrictions in places such as chemical plants, fuel depots and at any location where blasting operations are under way.

Electronic equipment

To avoid the risk of demagnetisation, do not let electronic devices close to your phone for a long time.

Electronic medical equipment

Your phone is a radio transmitter which may interfere with electronic medical equipment or implants, such as hearing aids, pacemakers, insulin pumps, etc. It is recommended that a minimum separation of 15 cm be maintained between the phone and an implant. Your doctor or the manufacturers of such equipment will be able to give you any advice you may need in this area.

Hospitals

Always make sure that your phone is switched off in hospitals when so instructed by warning signs or by medical staff.

Road safety

Do not use your phone when driving. In order to give your full attention to driving, stop and park safely before making a call. You must comply with any current legislation.

SIM card

The SIM card must be handled and stored with care in order not to be damaged. If you should lose your SIM card, contact your operator immediately.

Please keep your SIM card out of reach of young children.

Freeing the antenna

The antenna is integrated in your phone, under the back cover at the top.

Avoid putting your fingers on this area when the phone is switched ON.

If your fingers obstruct the antenna, the phone may have to operate with a higher power level than usual; decreasing its efficiency quickly. It could also affect the quality of your communications.

Non ionising radiation

To obtain maximum satisfaction from your phone, use it in a vertical position. Your personal safety can only be improved by doing so.

Warranty

You must always use your phone for the purpose for which it was designed, under normal operating conditions. SAGEM SA declines all responsibility for any use outside of the scope of its designed purpose and for any consequences of this use.

The software program developed by SAGEM remains the exclusive property of SAGEM SA. It is therefore highly prohibited to modify, translate, de-compile or disassemble this software program or any part thereof.

Use precautions

Your phone allows you to download ring tones, icons and animated screensavers. Some of these items may contain data that may cause malfunctions of your phone or data losses (virus for example).

For this reason, SAGEM SA rejects all responsibility concerning (1) the reception of downloaded data or losses of the said data, (2) the impact on the operation of the phone and (3) damages resulting from receiving the said downloaded data or loss of said data. In addition, SAGEM SA states that a failure caused by receiving downloaded data that do not comply with the specifications set by SAGEM SA is excluded from the warranty. Consequently, the diagnosis and repair of a phone infected by the said downloaded data will be at the expense of the customer.

Any content that you download to your phone may be protected by copyright belonging to third parties and consequently you may not have the right to use this content or its use may be restricted. Consequently it is up to you to ensure that you have permission, such as under the terms of a license agreement, to use any content that you download. Furthermore, SAGEM SA does not guarantee the accuracy nor the quality of any content that you download. You alone are responsible for the content that you download to your mobile phone and how you use it. SAGEM SA cannot be held responsible for this content nor for its use.

It is your responsibility to ensure compliance, at your own expense, with the laws and regulations applicable in the country where you use your phone.

Warranty conditions

Whenever you wish to make use of the warranty, please contact your vendor and present him with the purchasing paperwork that he gave you.

If a fault occurs, he will advise you.

1. The new phone (excluding consumables), including new accessories bundled with the phone, are guaranteed by SAGEM SA, parts and labour (apart from travel) against any manufacturing fault for a period of twelve (12) months with effect from the sale of the phone to the customer, on presentation of the paperwork stating the purchase date of the phone.

Phones that have been repaired or replaced as standard during the warranty period stated above are guaranteed (parts and labour) until the later of these two dates:

Expiry of the guarantee period of twelve (12) months stated above or three (3) months with effect from the date of support provided by SAGEM SA.

Your legal rights under the terms of applicable national law as well as your rights in relation to your retailer, as set out in the sales contract, remain applicable and are not in any way affected by this guarantee.

In any disputes, the phone is covered by the legal warranty against the consequences of faults or hidden defects in compliance with articles 1641 and subsequent of the French civil code.

2. All faulty phones under warranty will be replaced or repaired free of charge at SAGEM SA's option (with the exclusion of repair of any other damage), once it has been specified that the work required for the application of the warranty will be done in a workshop and that the return costs (transport and insurance) of the phone to the address to be indicated to it by the SAGEM SA after-sales service, whose phone number will appear on the delivery note, will be charged to the customer.

Subject to essential legal provisions, SAGEM SA does not accept any warranty, explicit or implicit, other than the warranty provided expressly in this chapter, nor shall SAGEM SA accept responsibility for any immaterial and/or indirect damages (such as loss of orders, loss of profit or any other financial or commercial damage) under the warranty or not.

3. The acceptance of a phone under warranty demands that a purchase document that is legible and without modification, stating vendor's name and address, date and place of purchase, type of phone and IMEI, are attached to the warranty, and that the information on the phone identification label is legible and that this label or any other seal has not been tampered with.

The warranty applies in normal conditions of use.

Prior to sending the phone for repair, it is the customer's responsibility to backup at his expense the customized data stored in the phone (phonebook, settings, wallpapers). A list of backup facilities can be provided by SAGEM SA on request. The responsibility of SAGEM SA cannot be invoked if damage occurs to customer files, programs or data. The information or operating elements and the contents of files will not be re-installed in any case in the event of loss.

SAGEM SA may decide, at its option, to repair the phone with new or reconditioned parts, replace the phone with a new phone or, in any dispute, a phone in good working condition. During its work SAGEM SA reserves the facility to make, where necessary, any technical modifications to the phone where these modifications do not adversely affect its initial purpose.

Faulty parts to be replaced during a repair under warranty will become the property of SAGEM SA.

The phone repair and standstill time during the warranty period may not lead to an extension of the warranty period as stated in article 1 above, provided no other vital provisions have been agreed.

The application of the warranty is subject to the full payment of the sums due for the phone when the request for support is made.

4. The following are excluded from the warranty:

Breakdowns or malfunctions due to non-compliance with the installation and use instructions, to an external cause of the phone (shock, lightning, fire, vandalism, malice, water damage of any type, contact with various

liquids or any harmful agent, unsuitable electric current...), to modifications of the phone made without the written consent of SAGEM SA, to a servicing fault, as described in the documentation supplied with the phone, to lack of supervision or care, to poor environmental conditions of the phone (especially temperature and hygrometry, effects of variations in electric voltage, interference from the mains network or earth) or even due to a repair, a call-out (opening or trying to open the phone) or to servicing done by personnel not approved by SAGEM SA.

Damage resulting from inadequate packaging and/or poor packing of the phone sent back to SAGEM SA.

Normal wear and tear of the phone and accessories.

Communication problems linked with a poor environment, especially:

Problems accessing and /or logging onto the Internet, such as breakdowns of the access network, the failure of the subscriber's or his correspondent's line, transmission fault (poor geographic coverage by radio transmitters, interference, disturbance, failure or poor quality of phone lines...), a fault inherent to the local network (cabling, file server, user phone) and/or transmission network fault (interference, disturbance, failure or poor quality of the network...).

Change of parameters of the cellular network made after the phone was sold.

Supply of new software versions.

Current servicing work: delivery of consumables, installation or replacement of these consumables...

Call-outs for phone or software modified or added without the written consent of SAGEM SA.

Faults or disruptions resulting from the use of products or accessories not compatible with the phone.

Phones returned to SAGEM SA without having complied with the return procedure specific to the phone covered by this warranty.

The opening or closing of a SIM operator key and call-outs resulting in the non-operation of the phone resulting from the opening or closing of SIM operator key done without the agreement of the original operator.

5. In the cases of warranty exclusion and of expiry of the warranty period, SAGEM SA shall draw up an estimate to be given to the customer for acceptance before any call-out. The repair and carriage costs (there and back) given in the accepted estimate will be charged to the customer.

These provisions are valid unless a special written agreement has been made with the customer. If one of the provisions turns out to infringe a legally essential rule that consumers could have the benefit of under the national legislation, this provision will not be applied, but all other provisions will remain valid.

End User Licence Agreement (EULA), for the software

CONTEXT AND ACCEPTATION OF THE AGREEMENT

You have acquired a Mobile Phone device ("DEVICE"), manufactured by SAGEM SA (SAGEM), that includes software either developed by SAGEM itself or licensed third party Software suppliers ("SOFTWARE COMPANIES") to SAGEM with the rights to sub-license it to the purchaser of the device. Those installed software products whatever their company of origin, and wherever the name of the company of origin is indicated or not in the DEVICE documentation, as well as associated media, printed materials, and "online" or electronic documentation ("SOFTWARE") are protected by international intellectual property laws and treaties. The SOFTWARE is licensed, not sold. All rights reserved.

IF YOU DO NOT AGREE TO THIS END USER LICENSE AGREEMENT ("EULA"), DO NOT USE THE DEVICE OR COPY THE SOFTWARE. INSTEAD, PROMPTLY CONTACT SAGEM FOR INSTRUCTIONS ON RETURN OF THE UNUSED DEVICE(S) FOR A REFUND. ANY USE OF THE SOFTWARE, INCLUDING BUT NOT LIMITED TO USE ON THE DEVICE, WILL CONSTITUTE YOUR AGREEMENT TO THIS EULA (OR RATIFICATION OF ANY PREVIOUS CONSENT).

SOFTWARE includes software already installed on the DEVICE ("DEVICE Software") and Software contained on the CD-ROM disk ("Companion CD"), if any is supplied with the product.

GRANT OF SOFTWARE LICENCE

This EULA grants you the following licence:

DEVICE Software. You may use the DEVICE Software as installed on the DEVICE. All or certain portions of the DEVICE Software may be inoperable if you do not have and maintain a service account with an appropriate Mobile Operator, or if the Mobile Operator's network facilities are not operating or configured to operate with the DEVICE software.

COMPANION CD. If any is supplied, additional software for your personal computer is included with your DEVICE. You may install and use the software component(s) contained in the Companion CD only in accordance with the terms of the printed or online end user license agreement(s) provided with such component(s). In the absence of an end user license agreement for particular component(s) of the Companion CD, you may install and use only one (1) copy of such component(s) on the DEVICE or a single computer with which you use the DEVICE.

Security Updates. The SOFTWARE may include digital rights management technology. If SOFTWARE does contain digital rights management technology, content providers are using the digital rights management technology ("DRM") contained in the SOFTWARE to protect the integrity of their content ("Secure Content") so that their intellectual property, including copyright, in such content is not misappropriated. Owners of such Secure Content ("Secure Content Owners") may, from time to time, request manufacturers or SOFTWARE SUPPLIERS to provide security related updates to the DRM components of the SOFTWARE ("Security Updates") that may affect your ability to copy, display and/or play Secure Content through the SOFTWARE or

third party applications that utilise the DRM. You therefore agree that, if you elect to download a licence from the Internet which enables your use of Secure Content, Suppliers may, in conjunction with such licence, also download onto your DEVICE such Security Updates that a Secure Content Owner has requested that SOFTWARE SUPPLIERS distribute. SAGEM and SOFTWARE SUPPLIERS will not retrieve any personally identifiable information, or any other information, from your DEVICE by downloading such Security Updates.

DESCRIPTION OF OTHER RIGHTS AND LIMITATIONS

COPYRIGHT. All title and intellectual property rights in and to the SOFTWARE (including but not limited to any images, photographs, animations, video, audio, music, text and "applets," incorporated into the SOFTWARE), the accompanying printed materials, and any copies of the SOFTWARE, are owned by SAGEM or the SOFTWARE SUPPLIERS. You may not copy the printed materials accompanying the SOFTWARE. All title and intellectual property rights in and to the content which may be accessed through use of the SOFTWARE is the property of the respective content owner and may be protected by applicable copyright or other intellectual property laws and treaties. This EULA grants you no rights to use such content. All rights not specifically granted under this EULA are reserved by SAGEM and the SOFTWARE SUPPLIERS

Limitations on Reverse Engineering, Decompilation and Disassembly. You may not reverse engineer, decompile, or disassemble the SOFTWARE, except and only to the extent that such activity is expressly permitted by applicable law notwithstanding this limitation.

Single DEVICE. The DEVICE Software is licensed with the DEVICE as a single integrated product. The DEVICE Software installed in the memory of the DEVICE may only be used as part of the DEVICE.

Single EULA. The package for the DEVICE may contain multiple versions of this EULA, such as multiple translations and/or multiple media versions (e.g., in the user documentation and in the software). Even if you receive multiple versions of the EULA, you are licensed to use only one (1) copy of the DEVICE Software.

Software Transfer. You may not permanently transfer any of your rights under this EULA with regard to the DEVICE Software or Companion CD, except as permitted by the applicable Mobile Operator. In the event that the Mobile Operator permits such transfer, you may permanently transfer all of your rights under this EULA only as part of a sale or transfer of the DEVICE, provided you retain no copies, you transfer all of the SOFTWARE (including all component parts, the media and printed materials, any upgrades, this EULA and, if applicable, the Certificate(s) of Authenticity), and the recipient agrees to the terms of this EULA. If the SOFTWARE is an upgrade, any transfer must include all prior versions of the SOFTWARE.

Software Rental. You may not rent or lease the SOFTWARE.

Speech/Handwriting Recognition. If the SOFTWARE includes speech and/or handwriting recognition component(s), you should understand that speech and handwriting recognition are inherently statistical processes; that recognition errors are inherent in the processes; and that errors can occur in the component's

recognition of your handwriting or speech, and the final conversion into text.. Neither SAGEM nor its suppliers shall be liable for any damages arising out of errors in the speech and handwriting recognition processes.

NOTICE REGARDING THE MPEG-4 VISUAL STANDARD. The SOFTWARE may include MPEG-4 visual decoding technology. MPEG LA, L.L.C. requires the following notice:

USE OF THIS SOFTWARE IN ANY MANNER THAT COMPLIES WITH THE MPEG-4 VISUAL STANDARD IS PROHIBITED, EXCEPT FOR USE DIRECTLY RELATED TO (A) DATA OR INFORMATION (i) GENERATED BY AND OBTAINED WITHOUT CHARGE FROM A CONSUMER NOT THEREBY ENGAGED IN A BUSINESS ENTERPRISE, AND (ii) FOR PERSONAL USE ONLY; AND (B) OTHER USES SPECIFICALLY AND SEPARATELY LICENSED BY MPEG LA, L.L.C.

If you have questions regarding this Notice, please contact MPEG LA, L.L.C., 250 Steele Street, Suite 300, Denver, Colorado 80206; Telephone 303 331.1880; FAX 303 331.1879

Termination. Without prejudice to any other rights, SAGEM may terminate this EULA if you fail to comply with the terms and conditions of this EULA. In such event, you must destroy all copies of the SOFTWARE and all of its component parts.

Consent to Use of Data. You agree that SOFTWARE SUPPLIERS may collect and use technical information gathered in any manner as part of product support services related to the SOFTWARE. SOFTWARE SUPPLIERS may use this information solely to improve their products or to provide customised services or technologies to you. SOFTWARE SUPPLIERS may disclose this information to others, but not in a form that personally identifies you.

Internet Gaming/Update Features. If the SOFTWARE provides, and you choose to utilise, the Internet gaming or update features within the SOFTWARE, it is necessary to use certain computer system, hardware, and software information to implement the features. By using these features, you explicitly authorise SOFTWARE SUPPLIERS to use this information solely to improve their products or to provide customised services or technologies to you. SOFTWARE SUPPLIERS may disclose this information to others, but not in a form that personally identifies you.

Internet-Based Services Components. The SOFTWARE may contain components that enable and facilitate the use of certain Internet-based services. You acknowledge and agree that SOFTWARE SUPPLIERS may automatically check the version of the SOFTWARE and/or its components that you are utilising and may provide upgrades or supplements to the SOFTWARE that may be automatically downloaded to your Device.

Links to Third Party Sites. The SOFTWARE may provide you with the ability to link to third party sites through the use of the SOFTWARE. The third party sites are not under the control of SAGEM. Neither SAGEM nor its affiliates are responsible for (i) the contents of any third party sites, any links contained in third party sites, or any changes or updates to third party sites, or (ii) webcasting or any other form of transmission received from any third party sites. If the SOFTWARE provides links to third party sites, those links are provided to you only

as a convenience, and the inclusion of any link does not imply an endorsement of the third party site by SAGEM or its affiliates.

Additional Software/Services. The SOFTWARE may permit SAGEM to provide or make available to you SOFTWARE updates, supplements, add-on components, or Internet-based services components of the SOFTWARE after the date you obtain your initial copy of the SOFTWARE ("Supplemental Components").

If SAGEM provides or makes available to you Supplemental Components and no other EULA terms are provided along with the Supplemental Components, then the terms of this EULA shall apply.

SAGEM reserves the right to discontinue any Internet-based services provided to you or made available to you through the use of the SOFTWARE.

EXPORT RESTRICTIONS. You acknowledge that SOFTWARE is subject to U.S. export jurisdiction. You agree to comply with all applicable international and national laws that apply to the SOFTWARE, including the U.S. Export Administration Regulations, as well as end-user, end-use and destination restrictions issued by U.S. and other governments.

UPGRADES AND RECOVERY MEDIA

DEVICE Software. If the DEVICE Software is provided by SAGEM separate from the DEVICE on media such as a ROM chip, CD ROM disk(s) or via web download or other means, and is labelled "For Upgrade Purposes Only", you may install one copy of such DEVICE Software onto the DEVICE as a replacement copy for the existing DEVICE Software and use it in accordance with this EULA, including any additional EULA terms accompanying the upgrade DEVICE Software.

COMPANION CD. If any Companion CD component(s) is provided by SAGEM separate from the DEVICE on CD ROM disk(s) or via web download or other means, and labelled "For Upgrade Purposes Only", you may (i) install and use one copy of such component(s) on the computer(s) you use to exchange data with the DEVICE as a replacement copy for the existing Companion CD component(s).

RESPONSIBILITIES

SUPPORT AND INFORMATION Should you have any questions concerning this EULA, or if you desire to contact SAGEM for any other reason, please refer to the address provided in the documentation for the DEVICE.

NO LIABILITY FOR CERTAIN DAMAGES. EXCEPT AS PROHIBITED BY LAW, SAGEM SHALL HAVE NO LIABILITY FOR ANY INDIRECT, SPECIAL, CONSEQUENTIAL OR INCIDENTAL DAMAGES ARISING FROM OR IN CONNECTION WITH THE USE OR PERFORMANCE OF THE SOFTWARE. THIS LIMITATION SHALL APPLY EVEN IF ANY REMEDY FAILS OF ITS ESSENTIAL PURPOSE. FOR APPLICABLE LIMITED WARRANTIES AND SPECIAL PROVISIONS PERTAINING TO YOUR PARTICULAR JURISDICTION, PLEASE REFER TO YOUR WARRANTY BOOKLET INCLUDED WITH THIS PACKAGE OR PROVIDED WITH THE SOFTWARE PRINTED MATERIALS.

SAGEM is a trademark of SAGEM SA.

T9 is protected by one or more of the following US patents: 5,818,437, 5,953,541, 5,187,480, 5,945,928, 6,011,554 and other patents are being applied for worldwide.

© Vodafone Group 2005. Vodafone, the Vodafone logos, and Vodafone live! are trade marks of the Vodafone Group.

Other product and company names mentioned herein may be the trade marks of their respective owners. The information contained in this publication is correct at the time of going to print. Such information may be subject to change and products and services may be modified, supplemented or withdrawn by Vodafone without prior notice. All products and services are subject to terms and conditions, copies of which may be obtained upon request.

FCC Conformance Document

FCC Part 24

Network NAPRD03.ver 2.11.2

HealthDraft IEEE Std 1528-200x

