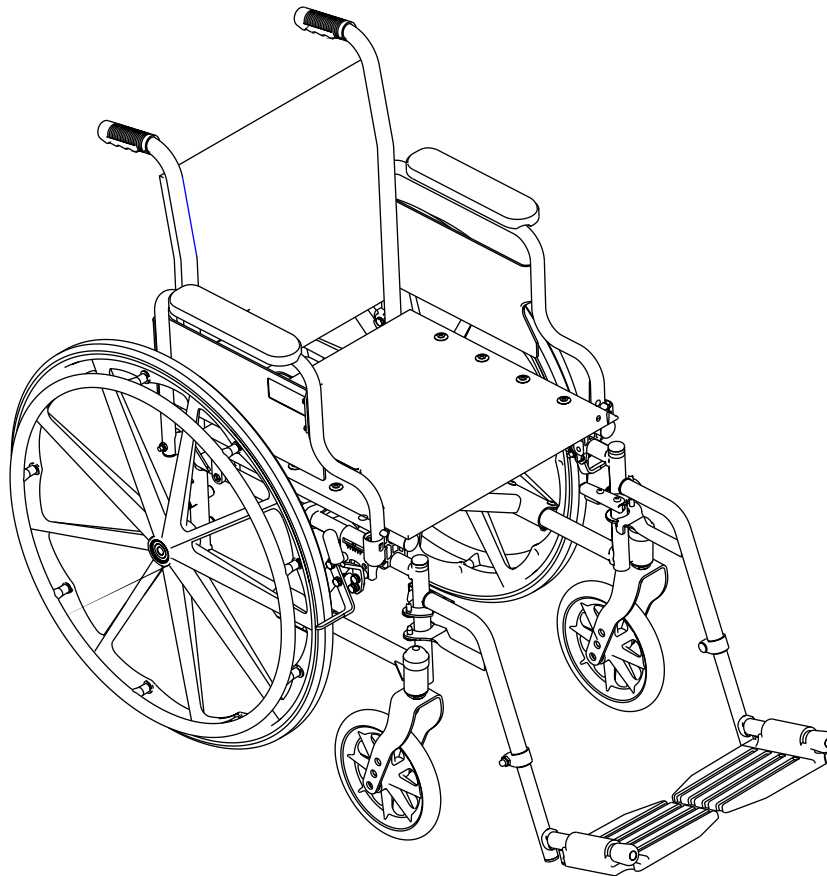


Owner's Operator And Maintenance Manual

Invacare[®] MX



DEALER: THIS MANUAL MUST BE GIVEN TO THE USER OF THE WHEELCHAIR.

USER: BEFORE USING THIS WHEELCHAIR, READ THIS MANUAL AND SAVE FOR FUTURE REFERENCE.



Yes, you can.™

WARNING

DO NOT OPERATE THIS EQUIPMENT WITHOUT FIRST READING AND UNDERSTANDING THIS MANUAL. IF YOU ARE UNABLE TO UNDERSTAND THE WARNINGS, CAUTIONS, AND INSTRUCTIONS, CONTACT A HEALTHCARE PROFESSIONAL, DEALER OR A QUALIFIED TECHNICIAN BEFORE ATTEMPTING TO USE THIS EQUIPMENT - OTHERWISE INJURY OR DAMAGE MAY RESULT.

SAVE THESE INSTRUCTIONS

TABLE OF CONTENTS

SPECIAL NOTES	4
LABEL LOCATIONS	5
SECTION 1 - GENERAL GUIDELINES	6
STABILITY	6
OPERATING INFORMATION	7
WEIGHT TRAINING	7
WEIGHT LIMITATION	7
SAFETY/HANDLING OF WHEELCHAIRS	8
SECTION 2 - SAFETY INSPECTION	13
SAFETY INSPECTION CHECKLIST	13
MAINTENANCE SAFETY PRECAUTIONS	14
SECTION 3 - FRONT RIGGINGS	15
INSTALLING/REMOVING THE FOOTREST	15
FOOTREST HEIGHT ADJUSTMENT	15
RAISING/LOWERING THE ELEVATING LEGREST ASSEMBLY	16
SECTION 4 - ARMS	17
USING FLIP BACK ARMRESTS	17
SECTION 5 - SEAT AND BACK	18
REPLACING BACK UPHOLSTERY	18
REPLACING SEAT UPHOLSTERY	18
SECTION 6 - REAR WHEELS	19
REMOVING/INSTALLING THE REAR WHEELS	19
SECTION 7 - FRONT CASTERS	20
ADJUSTING FORKS	20
REPLACING FRONT CASTERS	21
SECTION 8 - WHEEL LOCKS	22
WHEEL LOCK ADJUSTMENT	22
SECTION 9 - SEAT-TO-FLOOR HEIGHT	23
CHANGING SEAT-TO-FLOOR HEIGHT	23
SECTION 10 - OPTIONS	24
INSTALLING THE SEAT POSITIONING STRAP	24
NOTES	25
LIMITED WARRANTY	27

SPECIAL NOTES

WARNING/CAUTION notices as used in this manual apply to hazards or unsafe practices which could result in personal injury or property damage.

NOTICE

THE INFORMATION CONTAINED IN THIS DOCUMENT IS SUBJECT TO CHANGE WITHOUT NOTICE.

WHEELCHAIR USER

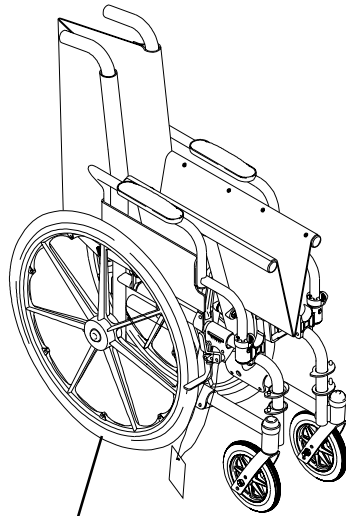
As a manufacturer of wheelchairs, Invacare endeavors to supply a wide variety of wheelchairs to meet many needs of the end user. However, final selection of the type of wheelchair to be used by an individual rests solely with the user and his/her healthcare professional capable of making such a selection.

This wheelchair has not been approved as a seat surface to be used within a vehicle of any kind. Always transfer wheelchair user to an approved vehicle seat with the appropriate restraints for this application.

Rear anti-tipper kit number 1058836 can be purchased for this wheelchair. Invacare strongly recommends the use of rear anti-tippers as an additional safeguard for the wheelchair user.

AS REGARDS TO RESTRAINTS - SEAT POSITIONING STRAPS - IT IS THE OBLIGATION OF THE DME DEALER, THERAPISTS AND OTHER HEALTHCARE PROFESSIONALS TO DETERMINE IF A SEATING RESTRAINT IS REQUIRED TO ENSURE THE SAFE OPERATION OF THIS EQUIPMENT BY THE USER. SERIOUS INJURY CAN OCCUR IN THE EVENT OF A FALL FROM A WHEELCHAIR. SEAT POSITIONING STRAP KIT NUMBER 1004310 CAN BE PURCHASED FOR THIS WHEELCHAIR. INVACARE STRONGLY RECOMMENDS THE USE OF SEAT POSITIONING STRAPS AS AN ADDITIONAL SAFEGUARD FOR THE WHEELCHAIR USER.

LABEL LOCATIONS



○

IMPORTANT NOTICE

The wheel locks on this wheelchair have been pre-set at the factory to comply with the Veterans Administration functional Standard 8320.01 of the Federal Register, paragraph 3.2.4.5.3. If these wheel locks do not meet your needs, follow instructions below.

CAUTION

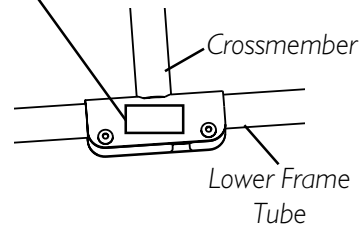
Any wheel lock adjustments should embed wheel lock shoe at least 1/8" into tire when locked (3/16" on pneumatic tires).

INSTRUCTIONS FOR WHEEL LOCK ADJUSTMENTS

1. Loosen wheel lock mounting fastener, which runs through mounting bracket and frame.
2. Slide clamp toward rear wheel until wheel lock shoe is embedded into tire material at least 1/8" when handle is engaged to the lock position (3/16" for pneumatic tires).
3. Tighten mounting fastener to secure mounting bracket in desired location and recheck lock shoe embedding.
4. Inspect for correct locking action BEFORE actual use.

00078X021-0394

WEIGHT CAPACITY
250 LBS. (114 kgs.)
 REFER TO OWNER'S MANUAL
P/N 1111013



Section I - General Guidelines includes the following:

Stability

Operating Information

Weight Training

Weight Limitation

Safety/Handling of Wheelchairs

STABILITY

WARNING

The position of the front casters, position of the rear wheels, as well as the user condition directly relate to the stability of the wheelchair. Any change to one (1) or any combination of the three (3) may cause the wheelchair to decrease in stability. These adjustments **MUST** be performed by a qualified technician.

	Caster Position	Wheel Position	User Condition
Caster Position	•	✓	✓
Wheel Position	✓	•	✓
User Condition	✓	✓	•

NOTE: When changes to the left hand column occur, follow across the chart and refer to the procedure that is checked (✓) to maintain the proper stability, safety and handling of the wheelchair.

OPERATING INFORMATION

WARNING

ALL Warnings and cautions in this manual must be followed unless otherwise noted.

DO NOT TRAVERSE, CLIMB or GO DOWN ramps or slopes greater than 9°.

DO NOT operate on roads, streets or highways.

DO NOT attempt to move up or down an incline with a water, ice or oil film.

DO NOT attempt to ride over curbs or obstacles. Doing so may cause your wheelchair to tip over and cause bodily harm to you or damage to the wheelchair.

DO NOT stand on the frame of the wheelchair.

DO NOT use the footplate as a platform. When getting in or out of the wheelchair, make sure that the footplates are in the upward position.

ALWAYS use the handrims for self-propulsion. **DO NOT** grip the rear wheels themselves.

DO NOT use parts, accessories, or adapters other than those authorized by Invacare.

WEIGHT TRAINING

Invacare **DOES NOT** recommend the use of its wheelchairs as a weight training apparatus. Invacare wheelchairs have **NOT** been designed or tested as a seat for any kind of weight training. If occupant uses said wheelchair as a weight training apparatus, Invacare shall **NOT** be liable for bodily injury and the warranty is void.

WEIGHT LIMITATION

The Invacare **MX** wheelchair has a weight limitation of 250 lbs. (114 kg.).

SAFETY/HANDLING OF WHEELCHAIRS

“Safety and Handling” of the wheelchair requires the close attention of the wheelchair user as well as the assistant. This manual points out the most common procedures and techniques involved in the safe operation and maintenance of the wheelchair. It is important to practice and master these safe techniques until you are comfortable in maneuvering around the frequently encountered architectural barriers.

Use this information only as a “basic” guide. The techniques that are discussed on the following pages have been used successfully by many users.

Individual wheelchair users often develop skills to deal with daily living activities that may differ from those described in this manual. Invacare recognizes and encourages each individual to try what works best for him/her in overcoming architectural obstacles that they may encounter, however ALL WARNINGS and CAUTIONS given in this manual MUST be followed. Techniques in this manual are a starting point for the new wheelchair user and assistant with “safety” as the most important consideration for all.

STABILITY AND BALANCE

To assure stability and proper operation of your wheelchair, you must at all times maintain proper balance. Your wheelchair has been designed to remain upright and stable during normal daily activities as long as you do not move beyond the center of gravity.

Virtually all activities which involve movement in the wheelchair have an effect on the center of gravity. Invacare recommends using seat/chest positioning straps for additional safety while involved in activities that shift your weight.

DO NOT lean forward out of the wheelchair any further than the length of the armrests. Make sure the casters are pointing in the forward position whenever you lean forward. This can be achieved by advancing the wheelchair and then reversing it in a straight line.

COPING WITH EVERYDAY OBSTACLES

Coping with the irritation of everyday obstacles can be alleviated somewhat by learning how to manage your wheelchair. Keep in mind your center of gravity to maintain stability and balance.

A NOTE TO WHEELCHAIR ASSISTANTS

When assistance to the wheelchair user is required, remember to use good body mechanics. Keep your back straight and bend your knees whenever tipping the wheelchair or traversing curbs, or other impediments.

When learning a new assistance technique, have an experienced assistant help you before attempting it alone.

WARNING

DO NOT attempt to lift the wheelchair by any removable (detachable) parts. Lifting by means of any removable (detachable) parts of a wheelchair may result in injury to the user or damage to the wheelchair.

Always verify that hand grips on the rear cane are secure **PRIOR** to use when an assistant is used to propel or lift the chair. Check for any signs of looseness or deterioration and if found, contact a qualified technician. **DO NOT** attempt to move the wheelchair by pulling on the hand grips if they are found to be unsecure or have deteriorated.

PERCENTAGE OF WEIGHT DISTRIBUTION**WARNING**

To determine and establish your particular safety limits, practice bending, reaching and transferring activities in several combinations in the presence of a qualified healthcare professional **BEFORE** attempting active use of the wheelchair.

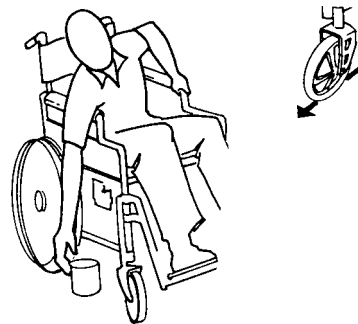
Many activities require the wheelchair owner to reach, bend and transfer in and out of the wheelchair. These movements will cause a change to the normal balance, the center of gravity, and the weight distribution of the wheelchair.

Proper positioning is essential for your safety. When reaching, leaning, or bending forward, it is important to use the front casters as a tool to maintain stability and balance.

Reaching, Leaning and Bending - Forward.**WARNING**

DO NOT attempt to reach objects if you have to move forward in the seat or pick them up from the floor by reaching down between your knees.

Position the front casters so that they are extended as far forward as possible and engage wheel locks.

**Reaching, Leaning - Backwards.****WARNING**

DO NOT lean over the top of the back upholstery. This will change your center of gravity and may cause you to tip over.

Position wheelchair as close as possible to the desired object. Point front casters forward to create the longest possible wheelbase. Reach back only as far as your arm will extend without changing your sitting position.



TIPPING**WARNING**

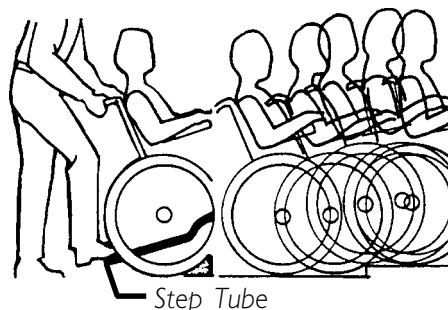
DO NOT tip the wheelchair without assistance.

When tipping the wheelchair, an assistant should grasp the back of the wheelchair on a non-removable (non-detachable) part. Inform the wheelchair occupant before tipping the wheelchair and remind him/her to lean back. Be sure the occupant's feet and hands are clear of all wheels and/or pinch points.

After mastering the techniques of tipping the wheelchair, use the following method to tackle curbs, short stairs, etc.

TIPPING - CURBS:

Place foot on the step tube and begin to tilt the wheelchair toward you. Apply a continuous downward motion until the balance point is achieved and the front casters clear the curb. At this point, the assistant will feel a difference in the weight distribution.



METHOD 1 - WHEELCHAIR WITH STEP TUBES

WARNING

When lowering the front casters of the wheelchair, DO NOT let the wheelchair drop the last few inches to the ground. This could result in injury to the occupant and/or damage to the wheelchair.

Roll the wheelchair forward and slowly lower the front of the wheelchair in one continuous movement onto the sidewalk. Do not let the wheelchair drop the last few inches to the ground. This could result in injury to the occupant. Push the wheelchair forward until the rear wheels roll up and over the curb.

ESCALATORS? SORRY!

DO NOT use an escalator to move a wheelchair between floors. Serious bodily injury may occur.

STAIRWAYS? SORRY!

DO NOT carry an occupied wheelchair up a stairway. Serious bodily injury may occur.

TRANSFERRING TO AND FROM OTHER SEATS

WARNING

BEFORE attempting to transfer in or out of the wheelchair, every precaution should be taken to reduce the gap distance. Turn both casters parallel to the object you are transferring onto. Also be certain the wheel locks are engaged to help prevent the wheels from moving.



CAUTION

When transferring, position yourself as far back as possible in the seat. This will help prevent broken screws, damaged upholstery and the possibility of the wheelchair tipping forward.

NOTE: This activity may be performed independently provided you have adequate mobility and upper body strength.

Position the wheelchair as close as possible along side the seat to which you are transferring, with the front casters pointing parallel to it. Remove or flip up the armrest. Engage wheel locks. Shift body weight into seat with transfer.

During independent transfer, little or no seat platform will be beneath you. Use a transfer board if at all possible.

UNFOLDING AND FOLDING THE WHEELCHAIR

WARNING

Keep hands and fingers clear of moving parts to avoid injury.

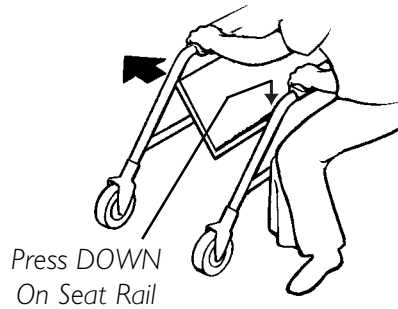
DO NOT sit or transfer into the wheelchair unless it is fully open and the seat frame rails are fully seated into the side frame H-blocks.

Unfolding.

1. Open the wheelchair by grasping the back cane of the wheelchair closest to you.
2. Tilt the wheelchair towards you (raising the opposite wheel and caster off the ground/floor).
3. Push downward on the TOP of the seat rail closest to you where the seat upholstery is attached until the wheelchair is fully open.
4. Engage both wheel locks, open the footrest/legrest for clearance and transfer into the wheelchair. Refer to TRANSFERRING TO AND FROM OTHER SEATS in this section of the manual.

Folding.

1. Swing footrest/legrest and calfpads (if equipped) in locked position to the front of the wheelchair.
2. Pivot footplates upward to vertical position.
3. With both hands, grasp the middle of the seat upholstery at the front and back edge and lift up.
4. Continue to close the wheelchair by grasping the back cane furthest from you and pulling the armrest towards you.

UNFOLDING**FOLDING**

Section 2 - Safety Inspection includes the following:**Safety Inspection Checklist****Maintenance Safety Precautions**

NOTE: Every six (6) months or as necessary, take your wheelchair to a qualified technician for a thorough inspection and servicing. Regular cleaning will reveal loose or worn parts and enhance the smooth operation of your wheelchair. To operate properly and safely, your wheelchair must be cared for just like any other vehicle. Routine maintenance will extend the life and efficiency of your wheelchair.

SAFETY INSPECTION CHECKLIST

Initial adjustments should be made to suit your personal body structure needs and preference. Thereafter follow these maintenance procedures:

ITEM	Initially	Weekly	Monthly	Periodically
GENERAL				
• Wheelchair rolls straight (no excessive drag or pull to one side).	X			X
• Inspect for loose/missing/broken hardware in all locations.	X			X
FRAME AND CROSSBRACES				
• Inspect for bent frame or crossbraces.	X			X
WHEEL LOCKS				
• Do not interfere with tires when rolling.	X		X	
• Pivot points free of wear and looseness.	X		X	
• Wheel locks easy to engage.	X			X
• Wheel locks prevent wheelchair from moving when engaged.	X	X		
SEAT AND BACK				
• Inspect upholstery for rips or sagging.	X			X
• Inspect for loose or broken hardware.	X		X	
• Inspect cane hand grips for wear/looseness/deterioration.	X		X	
TIRES				
• Inspect for flat spots, cracks and wear.	X	X		
CAUTION: As with any vehicle, the wheels and tires should be checked periodically for cracks and wear, and should be replaced if damaged.				
REAR WHEELS				
• No excessive side movement or binding when lifted and spun.	X			X
• Inspect wheels for cracks and wear (hub and rim).	X			X
• Inspect for cracked, bent or broken spokes.	X	X		
HANDRIMS				
• Inspect for signs of rough edges or peeling.	X			X
FRONT CASTERS/FORKS				
• Inspect wheel/fork assembly for proper tension by spinning caster; caster should come to a gradual stop.	X	X		
• Adjust bearing system if wheel wobbles noticeably or binds to a stop. Ensure wheel bearings are clean and free of moisture.	X		X	
• Check headtube locknuts for tightness.	X		X	
• Inspect casters for cracks and wear (hub and rim).	X			X
• Inspect for cracked or broken spokes.	X	X		
CAUTION: As with any vehicle, the wheels and tires should be checked periodically for cracks and wear, and should be replaced if damaged.				
CLEANING				
• Clean upholstery and armrests.	X			X

MAINTENANCE SAFETY PRECAUTIONS**WARNING**

Unless otherwise noted, all service adjustments should be performed while the wheelchair is unoccupied.

After **ANY** adjustments, repair or service and **BEFORE** use, make sure all attachment hardware is tightened securely - otherwise, injury or damage may result.

When cleaning rear cane or hand grip areas use only a clean towel lightly dampened with cool water. Verify that grips are dry prior to use. **DO NOT** use soap or ammonia based cleaning solutions otherwise the hand grips will slide off the cane assembly. Failure to observe this warning may result in injury to the user or bystanders.

CAUTION

DO NOT overtighten hardware attaching to the frame. This could cause damage to the frame tubing.

Section 3 - Front Riggings includes the following:

Installing/Removing the Footrest

Footrest Height Adjustment

Raising/Lowering the Elevated Legrest Assembly

INSTALLING/REMOVING THE FRONT RIGGINGS (FIGURE 1)

NOTE: This procedure applies to the swingaway front riggings and the elevating front riggings.

INSTALLING

1. Turn the front rigging to the side (open footplate is perpendicular to wheelchair).
2. Install the front rigging hinge plates onto the hinge pins on the wheelchair frame.
3. Push the front rigging towards the inside of the wheelchair until it locks into place.

NOTE: The footplate will be on the inside of the wheelchair when locked in place.

4. Repeat STEPS 1 - 3 for the opposite side of wheelchair.
5. To release the front rigging, push the footrest release lever inward, rotate footrest outward.

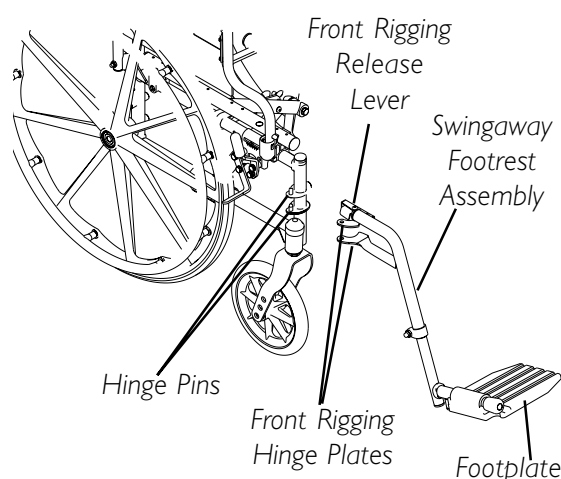


FIGURE 1 - INSTALLING/REMOVING THE FRONT RIGGINGS

REMOVING

1. Push the rigging release lever inward and rotate the front rigging outward.
2. Lift up on front rigging and remove from wheelchair.
3. Repeat STEPS 1-2 for the opposite side of the wheelchair.

FOOTREST HEIGHT ADJUSTMENT (FIGURE 2)

NOTE: This procedure applies to the swingaway footrest and elevating legrest.

1. Loosen, but do not remove the bolt and locknut that secure the lower footrest assembly to the upper footrest support.
2. Reposition the lower footrest assembly to the desired height.
3. Securely tighten lug bolt and locknut that secure the lower footrest to the footrest support.
4. Repeat STEP 1-3 for the opposite side of wheelchair, if necessary

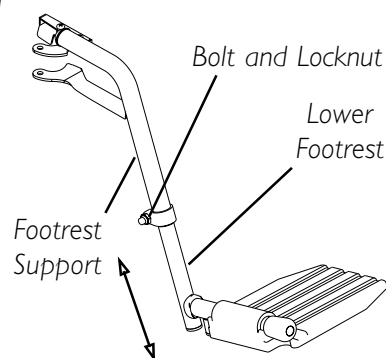


FIGURE 2 - FOOTREST HEIGHT ADJUSTMENT

RAISING/LOWERING THE ELEVATING LEGREST ASSEMBLY (FIGURE 3)

1. To raise the elevating legrest, the assistant or user should grab hold of the support tube and raise elevating legrests until the desired height is obtained.
2. To lower the elevating legrest, perform the following:
 - A. Support user leg with one (1) hand.
 - B. Push release lever downward with other hand.
 - C. Gently, lower user leg down and rest against the legrest.

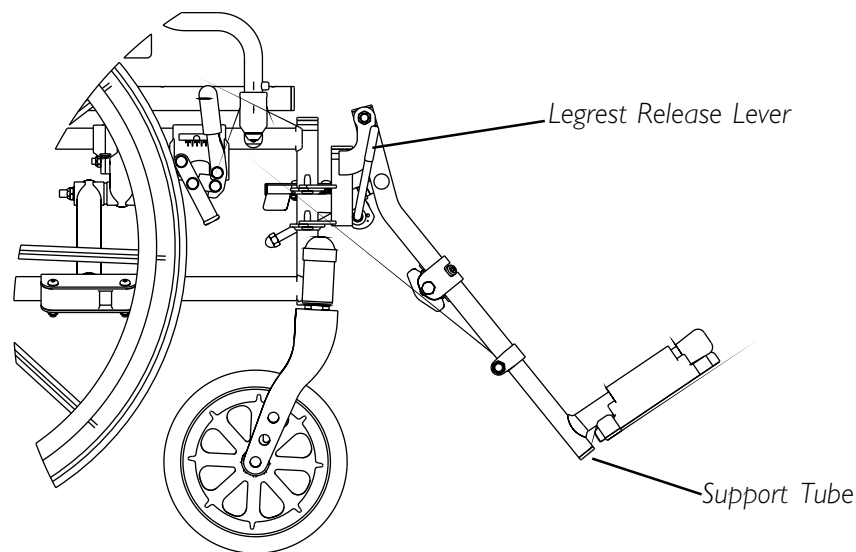


FIGURE 3 - RAISING/LOWERING THE ELEVATING LEGREST ASSEMBLY

Section 4 - Arms includes the following:

Using Flip Back Armrest

USING FLIP-BACK ARMREST (FIGURE 1)

WARNING

DO NOT operate flip-back armrest when wheelchair is folded - otherwise injury or damage may result.

Ensure armrest is securely locked into arm socket and armrest release button locks into place **BEFORE** using.

1. Push down on front of armrest to ensure it is fully seated in front socket.

NOTE: This step is needed to prevent the release button from hanging up on the socket.

2. Press in armrest release button located on armrest front tube.
3. Rotate front of armrest UP and OUT of arm socket.

NOTE: Armrest can rotate back approximately 90°.

4. To prepare armrest for use, rotate armrest downward, making sure front tube of armrest inserts into arm socket.
5. Push armrest down until release button snaps into arm socket.
6. Ensure armrest is securely locked into arm socket and armrest release button locks into place **BEFORE** using.

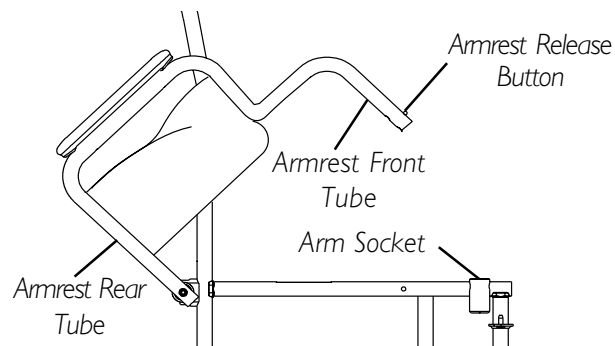


FIGURE 1 - USING FLIP-BACK ARMREST

Section 5 - Seat and Back includes the following:

Replacing Back Upholstery

Replacing Seat Upholstery

REPLACING BACK UPHOLSTERY (FIGURE 1)

1. Remove the eight (8) phillips screws and eight (8) washers that secure the existing back upholstery to the back canes.
2. Remove existing back upholstery from the back canes.
3. Securely tighten the new back upholstery to the back canes with the phillips screws and washers.

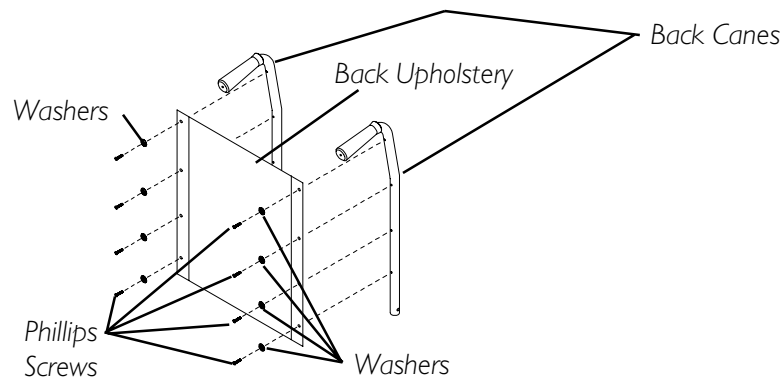


FIGURE 1 - REPLACING BACK UPHOLSTERY

REPLACING SEAT UPHOLSTERY (FIGURE 2)

1. Remove the eight (8) phillips screws and eight (8) washers that secure the existing seat upholstery to the crossbraces.
2. Remove the EXISTING seat upholstery from the crossbraces.
3. If used, ensure position of seat positioning strap. Refer to INSTALLING THE SEAT POSITIONING STRAP in SECTION 10 of this manual.
4. Install NEW seat upholstery by reversing STEPS 1-2.

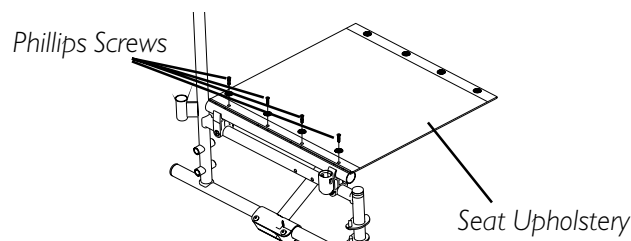


FIGURE 2 - REPLACING SEAT UPHOLSTERY

Section 6 - Rear Wheels includes the following:

Removing/Installing the Rear Wheels

REMOVING/INSTALLING THE REAR WHEELS (FIGURE 1)

WARNING

If a change in the SEAT-TO-FLOOR HEIGHT is desired, this procedure **MUST** be performed by a qualified technician.

Make sure both rear wheels are the same size and are installed into the same respective mounting hole **BEFORE** using the wheelchair, otherwise injury may occur.

1. Remove the dust cap, hex screw, washer, spacer and locknut that secure the rear wheel to the wheelchair frame.
2. Repeat STEP 1 for the opposite rear wheel.
3. To reinstall the rear wheel(s) onto the wheelchair, reverse STEPS 1-2. Torque down locknut to 40 FT-LBS.
4. Adjust wheel locks. Refer to WHEEL LOCK ADJUSTMENT in SECTION 8 of this manual.

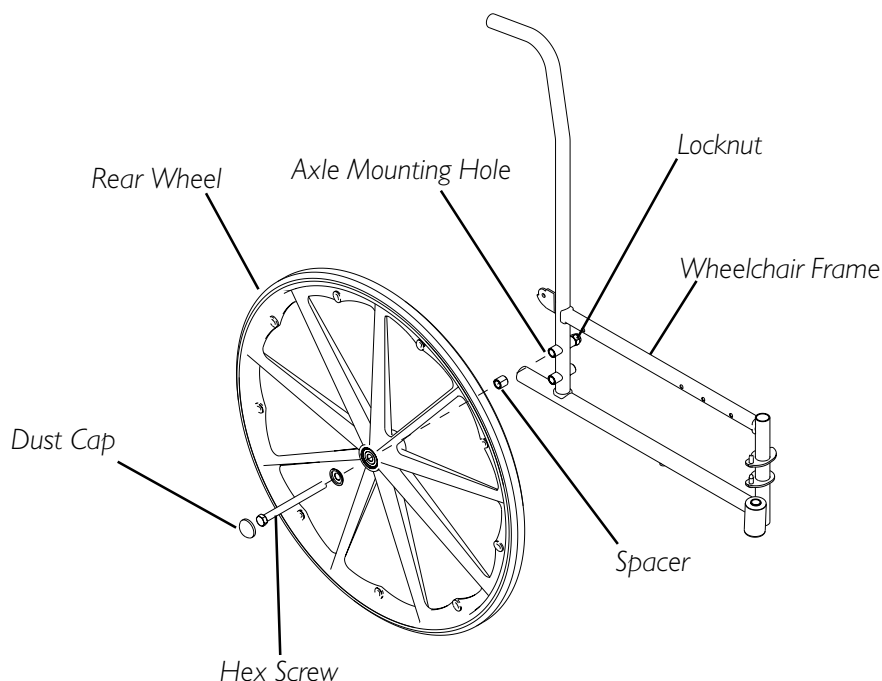


FIGURE 1 - REMOVING/INSTALLING THE REAR WHEELS

Section 7 - Front Casters includes the following:

Adjusting Forks

Replacing Front Casters

ADJUSTING FORKS (FIGURE 1)

1. To properly tighten caster journal system and guard against flutter, perform the following check:
 - A. Tip back of wheelchair to floor.
 - B. Pivot both forks and casters to top of their arc simultaneously.
 - C. Let casters drop to bottom of arc (wheels should swing once to one-side, then immediately rest in a straight downward position).
 - D. Adjust locknuts according to freedom of caster swing.
 - E. Repeat STEPS C-D until wheels swing once to one-side.
 - F. Return wheelchair to an upright position.
2. Test wheelchair for maneuverability.
3. Readjust locknuts if necessary, and repeat STEPS 1-2 until correct.
4. Snap dust cover over the locknut and stem.

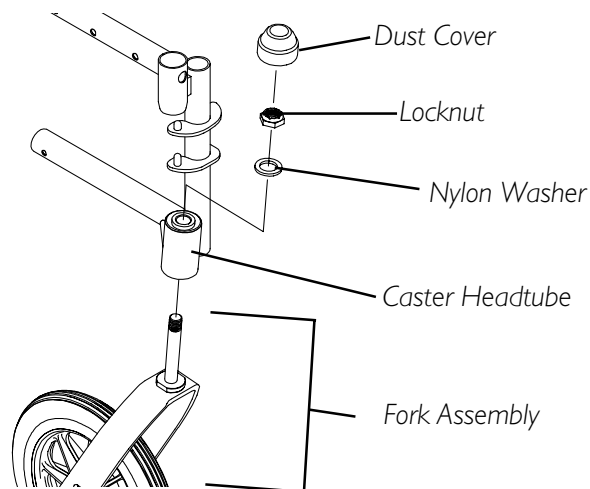


FIGURE 1 - ADJUSTING FORKS

REPLACING FRONT CASTERS (FIGURE 2)**WARNING**

Make sure both front casters are the same size and are installed into the same respective mounting hole **BEFORE using the wheelchair, otherwise injury may occur.**

1. Remove the hex screw, washers and locknut that secure the front caster to the fork.

NOTE: Washers are only used with casters with precision bearings.

2. To reinstall the new front caster onto the fork, reverse STEP 1.

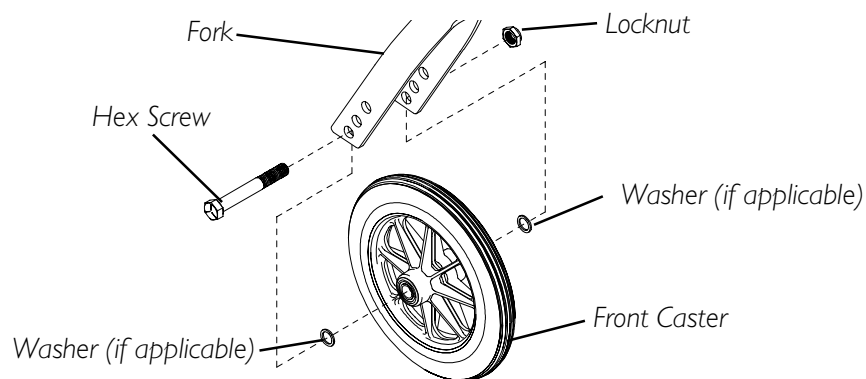


FIGURE 2 - REPLACING FRONT CASTERS

Section 8 -Wheel Locks includes the following:

Wheel Lock Adjustment

WHEEL LOCK ADJUSTMENT (FIGURE 1)

WARNING

DO NOT attempt to stop a moving wheelchair with the wheel locks. WHEEL LOCKS ARE NOT BRAKES.

1. Disengage the wheel locks.
2. Loosen the bolt and locknut that secure the wheel lock to the wheelchair frame.
3. Reposition the wheel lock so that when engaged, the wheel lock shoe embeds the tire 1/8-inch and **HOLDS** the occupied wheelchair in place when pushed.
4. Securely tighten the bolt and locknut securing the wheel lock to the wheelchair frame.
5. Engage the wheel lock.
6. Measure the distance the wheel lock is embedded into the tire as shown in DETAIL "A" of FIGURE 1.

NOTE: Any wheel lock adjustment should embed the wheel lock shoe at least 1/8-inch into the tire when engaged.

7. Repeat STEPS 1-6 until the wheel lock shoe embeds the tire 1/8-inch (and **HOLDS** the occupied wheelchair in place when pushed).
8. Repeat STEPS 1-7 for the opposite wheel lock.
9. If the measurement of 1/8-inch can not be achieved, remove the bolt and locknut that secure the wheel lock to the wheelchair frame and mount the wheel lock in one (1) of two (2) mounting positions.
10. Repeat STEPS 1-9 until the wheel lock **HOLDS** the occupied wheelchair in place when pushed. If the correct measurement still cannot be achieved, contact a qualified technician.

DETAIL "A" - WHEEL LOCK SHOE ENGAGEMENT

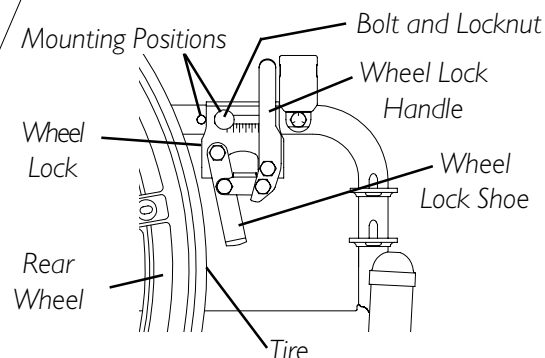
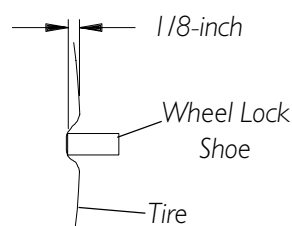


FIGURE 1 - WHEEL LOCK ADJUSTMENT

Section 9 - Seat-to-Floor Height includes the following:

Changing Seat-To-Floor Height

CHANGING SEAT-TO-FLOOR HEIGHT (FIGURE 1)

WARNING

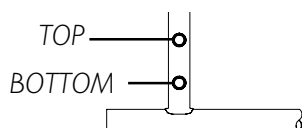
Seat-to-floor heights have specific positions depending on rear wheel size, rear wheel position, and front caster position. These adjustments **MUST** be performed by a qualified technician.

1. Refer to the following chart in FIGURE 1 to determine mounting positions for front casters/forks and rear wheels for the desired obtainable seat-to-floor height.
2. Remove the rear wheels from the wheelchair. Refer to REMOVING/INSTALLING THE REAR WHEELS in SECTION 6 of this manual.
3. Remove the front casters from the wheelchair. Refer to REPLACING FRONT CASTERS in SECTION 7 of this manual.
4. Reinstall the rear wheels onto the wheelchair in the mounting position indicated in the chart. Refer to REMOVING/INSTALLING THE REAR WHEELS in SECTION 6 of this manual.
5. Re-install the front casters onto the wheelchair in the mounting position indicated in the chart. Refer to REPLACING FRONT CASTERS in SECTION 7 of this manual.

8-INCH FRONT CASTERS

SEAT-TO-FLOOR HEIGHT (in inches)	FRONT CASTER MOUNTING POSITION	REAR WHEEL SIZE	REAR WHEEL MOUNTING POSITION
17-1/2	TOP	24-inch	TOP
19-1/2	BOTTOM	24-inch	BOTTOM

REAR WHEEL MOUNTING POSITIONS



FORK MOUNTING POSITIONS

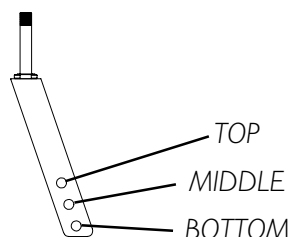


FIGURE 1 - CHANGING SEAT-TO-FLOOR HEIGHT

SECTION 10 - Options includes the following:

Installing Seat Positioning Strap

INSTALLING SEAT POSITIONING STRAP (FIGURE 1)

1. Remove the bottom back upholstery screw from the wheelchair.
2. Position the seat positioning strap half between the back cane and back upholstery.
3. Secure the back upholstery and seat positioning strap to the wheelchair with the existing back upholstery screw.
4. Repeat STEP 1 - 3 for the opposite side of the wheelchair.

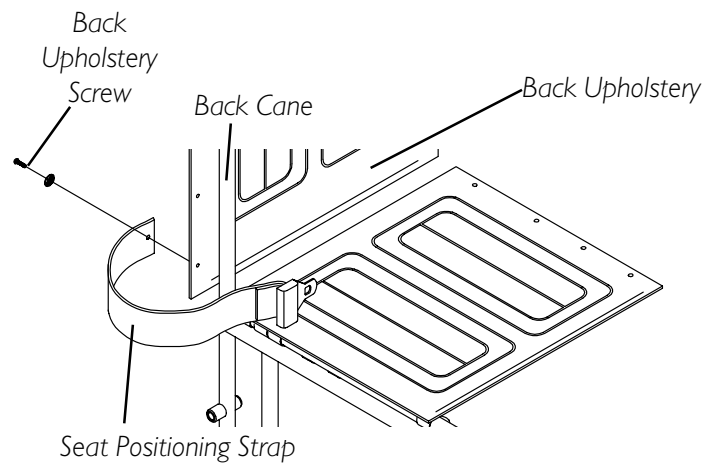


FIGURE 1 - INSTALLING THE SEAT POSITIONING STRAP

NOTES

NOTES

NOTES

NOTES

LIMITED WARRANTY

PLEASE NOTE: THE WARRANTY BELOW HAS BEEN DRAFTED TO COMPLY WITH FEDERAL LAW APPLICABLE TO PRODUCTS MANUFACTURED AFTER JULY 4, 1975.

This warranty is extended only to the original purchaser/user of our products.

This warranty gives you specific legal rights and you may also have other legal rights which vary from state to state.

Invacare warrants its product to be free from defects in materials and workmanship for a period of one (1) year from date of purchase. The side frames and crossmembers are warranted to be free from defects in materials and workmanship of the original purchaser/users for a period of three (3) years. If within such warranty period any such product shall be proven to be defective, such product shall be repaired or replaced, at Invacare's option. This warranty does not include any labor or shipping charges incurred in replacement part installation or repair of any such product. Invacare's sole obligation and your exclusive remedy under this warranty shall be limited to such repair and/or replacement.

For warranty service, please contact the dealer from whom you purchased your Invacare product. In the event you do not receive satisfactory warranty service, please write directly to Invacare at the address at the bottom of this page. Provide dealer's name, address, the product model number, date of purchase, indicate nature of the defect and, if the product is serialized, indicate the serial number. Do not return products to our factory without our prior consent.

LIMITATIONS AND EXCLUSIONS: THE FOREGOING WARRANTY SHALL NOT APPLY TO SERIAL NUMBERED PRODUCTS IF THE SERIAL NUMBER HAS BEEN REMOVED OR DEFACED, PRODUCTS SUBJECTED TO NEGLIGENCE, ACCIDENT, IMPROPER OPERATION, MAINTENANCE OR STORAGE, PRODUCTS MODIFIED WITHOUT INVACARE'S EXPRESS WRITTEN CONSENT INCLUDING, BUT NOT LIMITED TO, MODIFICATION THROUGH THE USE OF UNAUTHORIZED PARTS OR ATTACHMENTS; PRODUCTS DAMAGED BY REASON OF REPAIRS MADE TO ANY COMPONENT WITHOUT THE SPECIFIC CONSENT OF INVACARE, OR TO A PRODUCT DAMAGED BY CIRCUMSTANCES BEYOND INVACARE'S CONTROL, AND SUCH EVALUATION WILL BE SOLELY DETERMINED BY INVACARE. THE WARRANTY SHALL NOT APPLY TO PROBLEMS ARISING FROM NORMAL WEAR OR FAILURE TO ADHERE TO THESE INSTRUCTIONS.

THE FOREGOING EXPRESS WARRANTY IS EXCLUSIVE AND IN LIEU OF ANY OTHER WARRANTIES WHATSOEVER, WHETHER EXPRESS OR IMPLIED, INCLUDING THE IMPLIED WARRANTIES OF MERCHANTABILITY AND FITNESS FOR A PARTICULAR PURPOSE, AND THE SOLE REMEDY FOR VIOLATIONS OF ANY WARRANTY WHATSOEVER, SHALL BE LIMITED TO REPAIR OR REPLACEMENT OF THE DEFECTIVE PRODUCT PURSUANT TO THE TERMS CONTAINED HEREIN. THE APPLICATION OF ANY IMPLIED WARRANTY WHATSOEVER SHALL NOT EXTEND BEYOND THE DURATION OF THE EXPRESS WARRANTY PROVIDED HEREIN. INVACARE SHALL NOT BE LIABLE FOR ANY CONSEQUENTIAL OR INCIDENTAL DAMAGES WHATSOEVER.

THIS WARRANTY SHALL BE EXTENDED TO COMPLY WITH STATE/PROVINCIAL LAWS AND REQUIREMENTS.



Yes, you can.™

Invacare Corporation www.invacare.com

USA

One Invacare Way
Elyria, Ohio USA
44036-2125
800-333-6900

Canada

570 Matheson Blvd E Unit 8
Mississauga Ontario
L4Z 4G4 Canada
800-668-5324

MADE IN MEXICO

Invacare is a registered
trademark of Invacare Corporation.
Yes, you can. is a trademark of Invacare
Corporation.

© 2003 Invacare Corporation
Part No. 1119240 Rev A 03/03