

QUICK RELEASE CASTER

Assembly, Installation, and Operating Instructions



SAFETY SUMMARY

The following recommendations are made for the safe use of the Quick-Release Caster:

WARNING

Check the quick-release caster for shipping damage before using. In case of damage, DO NOT use. Contact the dealer/carrier for further instructions.

Make certain all screws and nuts are tight at all times.

Pull on quick release casters each time BEFORE using the wheelchair to make sure they are securely locked onto the chair frame.

Make sure the detent pin of the quick release caster head tube cap is fully released BEFORE operating the wheelchair.

There are several configurations of the quick release caster. If caster fork stem DOES NOT look like the drawing in FIGURE 2 when installed, DO NOT USE. Contact Customer Service, 1-(800)-333-6900.

TOOLS REQUIRED:

Two (2) Open Head Wrenches
One (1) Socket Head Wrench

A NOTE ABOUT QUICK-RELEASE CASTERS

Quick-release casters are an option that allow for quick and easy removal of the casters from the wheelchair so the wheelchair can be stored and transported conveniently. When using the quick-release caster option, a spring loaded caster head tube cap will be used instead of a stem nut to secure the front caster to the chair frame. Unlike the stem nut, the caster head tube cap is not adjustable and thus caster flutter will be more evident with the quick-release caster option than it would be with the standard caster attaching hardware.

REMOVING THE EXISTING CASTER FORK (FIGURE 1)

1. Remove the bolt and locknut that secure the front caster and the two (2) spacers to the fork.
2. Remove the dust cover on the top of the head tube.

3. While holding the fork and using a socket head wrench, remove the locknut that secures the fork, and washer in the head tube of the chair.

NOTE: The dust cover and locknut are not used with the quick release casters. Keep them for future use.

4. Remove the existing fork from the head tube of the chair.

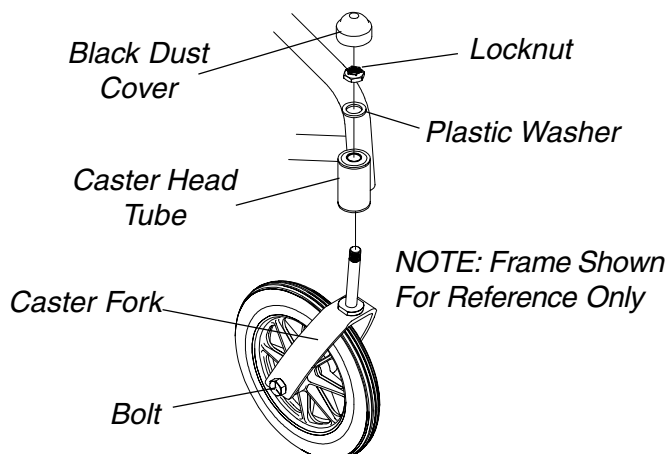


FIGURE 1 - REMOVING THE EXISTING CASTER FORK

INSTALLING THE QUICK RELEASE CASTER (FIGURE 2)

WARNING

Pull on quick release casters each time BEFORE using the wheelchair to make sure they are securely locked onto the chair frame.

Make sure the detent pin of the quick release caster head tube cap is fully released BEFORE operating the wheelchair.

There are several configurations of the quick release caster. If caster fork stem DOES NOT look like the drawing in FIGURE 2 when installed, DO NOT USE. Contact Customer Service, 1-(800)-333-6900.

1. Install the quick release caster fork through the head tube of the chair making sure the caster fork stem is approximately 1/4-inch above the caster head tube.

2. Depress the detent pin of the quick release caster head tube cap and install over the top of the quick release caster fork stem.
3. Release the detent pin of the quick release caster head tube cap and pull on the caster fork to make sure the fork is securely attached to the chair.
4. Reinstall and securely tighten the bolt and locknut that secure the two (2) spacers and caster onto the quick release caster fork.
5. Repeat this procedure for the opposite side.

WARNING

There are several configurations of the quick release caster. If caster fork stem DOES NOT look like the drawing in FIGURE 2 when installed, DO NOT USE. Contact Customer Service, 1-(800)-333-6900.

NOTE: When removing the quick release casters for any reason, reinstall the quick release caster head tube cap onto the fork stem so it can be located easily for future use.

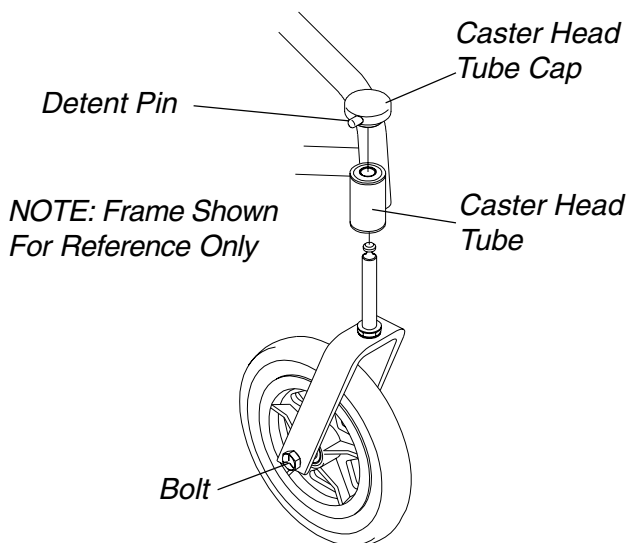
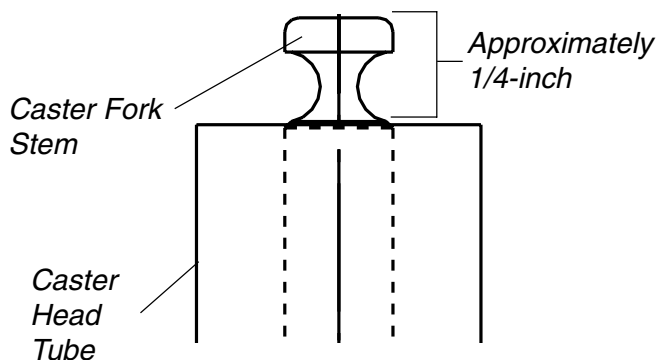


FIGURE 2 - INSTALLING THE QUICK-RELEASE CASTER



Invacare Corporation www.invacare.com

One Invacare Way
Elyria, Ohio USA
44036-2125
800-333-6900

Technical Support
800-832-4707

Invacare is a registered trademark of Invacare Corporation
© 1999 Invacare Corporation

Form No. 94-150 P/N 1050205 Rev. A (1) - 11/99