

automatic clothes washer model WWA8330V OPERATING INSTRUCTIONS

**SAVE THESE INSTRUCTIONS
WITH YOUR USE AND CARE BOOK**

Before operating your washer,
READ YOUR USE AND CARE BOOK.

It contains valuable information about sorting and loading, laundry additives, stain removal and **IMPORTANT CAUTIONS FOR THE PERSONAL SAFETY OF THOSE USING THIS APPLIANCE.**

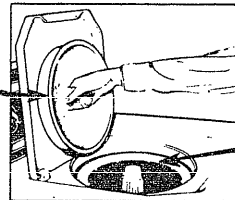
SORT AND LOAD

- Remove filter pan. (The underside of the lid provides a convenient resting place for the filter pan while loading and unloading clothes.)

- Add sorted laundry to wash basket. See your Use and Care Book for sorting details.

- A typical full load:

| | |
|------------------------------|--------------------|
| 3 double sheets | 5 T-shirts |
| 4 long sleeve shirts | 3 pair of trousers |
| 5 bath towels | 7 wash cloths |
| 4 standard size pillow cases | 6 handkerchiefs |



- Clothes level should be below the clothes retaining ring.

- Replace Filter Pan and add measure amount of detergent as recommended on detergent package. Note: Because of variations in contents, some granular detergents may be

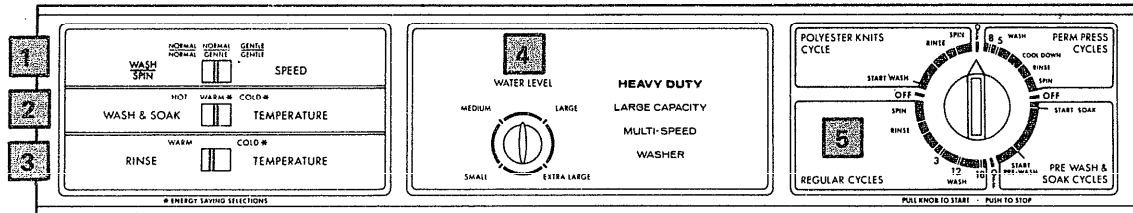
difficult to dissolve. If this is a problem:

- After loading the clothes, put the detergent in the wash basket next to the agitator, or,
- Use a liquid detergent.

- For Use of Beach Dispenser and Fabric Softener Dispenser, see page 4.

SET THE CONTROLS

Refer to CONTROLS SETTING GUIDE on next page



- Close lid and set controls as follows:

Lid must be closed for washer to operate. Washer will fill but will not agitate or spin with lid open.

- Select WASH/SPIN SPEED.

- Select WASH & SOAK TEMPERATURE.

- Select RINSE TEMPERATURE.

Cold rinse will be automatically provided when:

- Cold Wash is selected, OR,
 - Permanent Press Cycle is selected.
- (Cool-down spray rinse and cold-water deep rinse are provided to minimize the setting of wrinkles.)

- Select WATER LEVEL:

Load Size Setting

Small
Medium
Large
Extra Large

Amount Of Clothes In Washer

Less than 1/3 full
Between 1/3 - 1/2 full
Between 1/2 - 3/4 full
Over 3/4 full

- Push Cycle Selector Knob in and turn clockwise to your selected wash cycle. See wash cycles on page 3.

- Pull Cycle Selector Knob out to start washer.



The wash cycle setting can be changed at any time. Push in the Cycle Selector knob to stop the washer and reset to the new position.

EFFDATE 10-11-88

UC18

49-9341

CONTROLS SETTING GUIDE

| | COTTONS & LINENS | | | | PERMANENT PRESS | | POLYESTER KNITS SYNTHETICS & BLENDS | |
|----------------------------------|---|--|-----------------------|-------------------|-----------------------|-------------------------|--|-------------------------|
| | Work Clothes, dungarees, etc. with heavy soil | Work clothes, dungarees, etc. with normal soil | White or Colorfast | Bright Colors | Heavy or Oily Soil | Normal or Light Soil | Heavy or Oily Soil | Normal or Light Soil |
| 1 WASH & SPIN SPEED | Normal/ Normal | Normal/ Normal | Normal/ Normal | Normal/ Normal | Normal/ Gentle | Normal/ Gentle | Normal/ Gentle | Gentle/ Gentle |
| 2 *WASH TEMP. | Hot | Hot or Warm | Hot or Warm | Warm | Hot | Warm | Warm | Warm |
| 3 RINSE TEMP. | Cold | Cold | Cold | Cold | Cold | Cold | Cold | Cold |
| 4 CYCLE | Regular | Regular | Regular | Regular | Perm Press | Perm Press | Polyester Knit | Polyester Knit |
| 5 **CYCLE SELECTOR SETTING | 18 Min. | 14 Min. | 10 Min. | 10 Min. | 8 Min. | 5-8 Min. | Start Wash | Start Wash |

*The cooler wash settings (not below 80° F./27° C.) will save energy. See your Use and Care Book for more complete instructions.

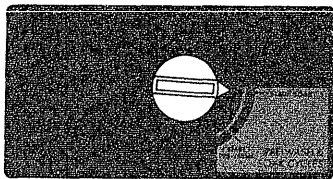
**The wash times suggested here apply to laundering an average weight of clothes under typical home conditions. You may find that some adjustment in these times is desirable.

HOW TO USE THE AUTOMATIC SOAK CYCLE

Do not use the FABRIC SOFTENER DISPENSER with the Prewash & Soak Cycles.

AUTOMATIC SOAK

- Load clothes into the washer.
- Put soaking-agent in the filter pan.
- Select desired speed, water temperatures and water level.
- Set Cycle Selector to "Start Soak" position.
- Pull Cycle Selector knob out to start washer. The SOAK CYCLE will be completed automatically.



The Soak Cycle will NOT progress automatically into the REGULAR wash cycle.

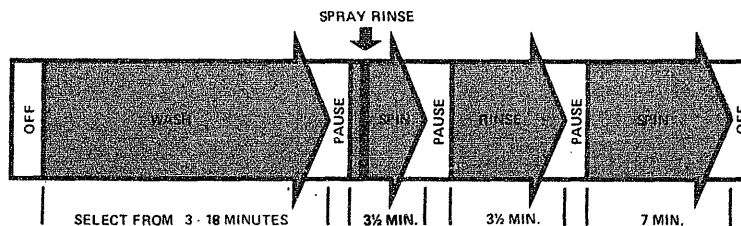
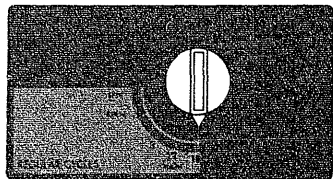
EXTENDED SOAK

- Follow procedure at the left except - allow washer to agitate for a few minutes to dissolve soaking agent, then —
- Push in Cycle Selector knob to stop washer and allow to soak for as long as desired.
- After desired soak period,
— Pull Cycle Selector knob out to re-start washer. The SOAK CYCLE will be completed automatically.
- You are now ready to proceed with regular washing.

WHAT HAPPENS IN EACH CYCLE

REGULAR CYCLES

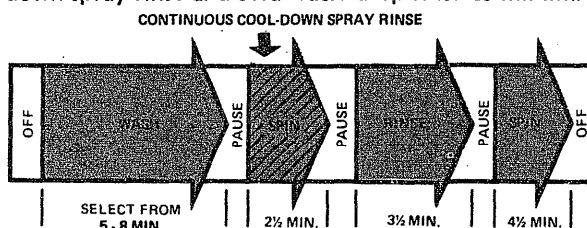
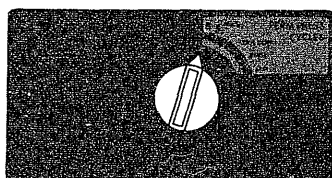
Provides longer washing time for most cottons, linens, work and play clothes.



TOTAL CYCLE TIME: Varies from 22 to 37 minutes plus fill time depending on selected wash time.

PERM PRESS CYCLES

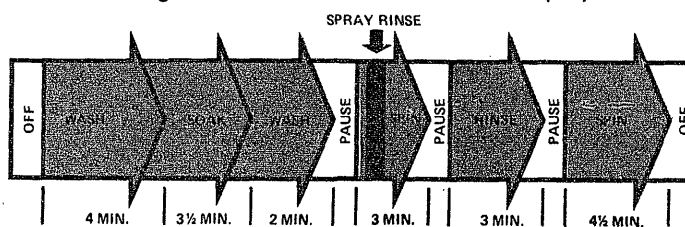
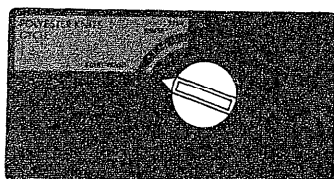
Cool-down spray rinse and cold-water deep rinse to minimize the setting of wrinkles.



TOTAL CYCLE TIME: Varies from 21 to 24 minutes plus fill time depending on selected wash time.

POLYESTER KNITS CYCLE

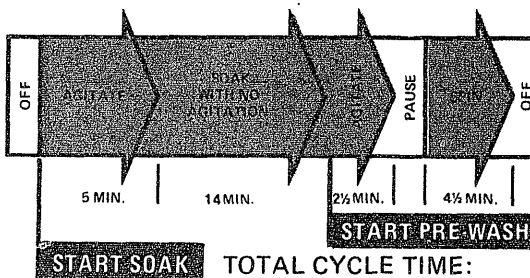
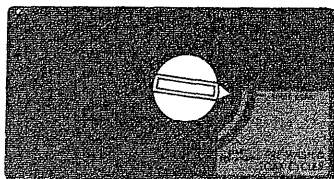
A combination of agitation and soak for more effective polyester knit laundering.



TOTAL CYCLE TIME: 25 minutes plus fill time.

PRE WASH & SOAK CYCLES

May be used with most soaking aids to loosen deeply embedded soils or stains.



TOTAL CYCLE TIME:
28 minutes plus fill time.

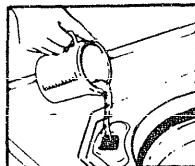
TOTAL CYCLE TIME: 9 minutes
plus fill time.

All times are approximate.

HOW TO USE THE BLEACH DISPENSER

The Bleach Dispenser is designed for use with liquid bleach only! If you prefer to use powdered bleach, pour it into the filter pan, NOT into the bleach dispenser.

- Do NOT overflow—Avoid splashing. Undiluted bleach will cause fabric damage.



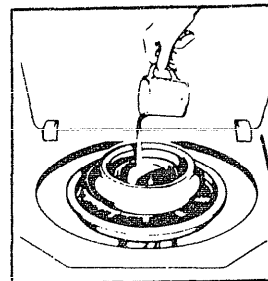
- Pour measured amount of liquid bleach directly into the BLEACH DISPENSER.

- Maximum recommended amount of liquid bleach . . .
 - Full wash: 1 1/4 cup (310 ml) liquid
 - Small wash: 2/3 cup (170 ml) liquid

NEVER POUR LIQUID BLEACH DIRECTLY ONTO CLOTHES

HOW TO USE THE FABRIC SOFTENER DISPENSER

- Position Fabric Softener Dispenser on filter-pan.
- Pour the manufacturer's recommended amount of fabric softener into a standard measuring cup.
- Add enough water to fill the cup 1/2 full.
- Pour the diluted softener into the dispenser.
- The fabric softener will automatically be dispensed at the proper time.



Stopping the washer during the first spin period will cause the dispenser to empty too soon.

Do not use the FABRIC SOFTENER DISPENSER with the PRE-WASH & SOAK CYCLES.

BEFORE YOU CALL FOR SERVICE . . . Check the TROUBLE-SHOOTING GUIDE on the back cover of your USE AND CARE BOOK. It lists many minor causes of operating failure that you can correct yourself and may save you an unnecessary service call.

GENERAL ELECTRIC

GENERAL ELECTRIC COMPANY
HOME LAUNDRY PRODUCTS
APPLIANCE PARK
LOUISVILLE, KENTUCKY 40225

Product improvement is a continuing endeavor at General Electric. Therefore, specifications are subject to change without notice. A General Electric Warranty applies to this product.

