

User
Manual

Washing
machine



ZWG 5120
ZWG 5140
ZWG 5160

Thank you for selecting our appliance

We wish you lots of enjoyment with your new appliance and we hope that you will consider our brand again when purchasing household appliances. Please read this user manual carefully and keep it throughout the product life cycle as a reference document. The user manual should be passed on to any future owner of the appliance.

The following symbols are used in this manual:



Important information concerning your personal safety and information on how to avoid damaging the appliance.



General information and tips



Environmental information

Content

Safety information	3	Care and cleaning	17
Description of the appliance	5	Something not working	19
Detergent dispenser drawer	5	Technical data	22
Control panel and functions	6	Consumption values	23
Programme table	8-9	Installation instruction	24
Programme information	10	Environmental concerns	27
Washing Hints	11		
Before the first use	13		
Operating Sequence	14		

Safety information

In the interest of your safety and to ensure the correct use, before installing and first using the appliance, read this user manual carefully, including its hints and warnings. To avoid unnecessary mistakes and accidents, it is important to ensure that all people using the appliance are thoroughly familiar with its operation and safety features. Save these instructions and make sure that they remain with the appliance if it is moved or sold, so that everyone using it through its life will be properly informed on appliance use and safety.

General safety

- It is dangerous to alter the specifications or attempt to modify this product in any way.
- During high temperature wash programmes the door glass may get hot. Do not touch it!
- Make sure that small pets do not climb into the drum. To avoid this, please check into the drum before using.
- Any objects such as coins, safety pins, nails, screws, stones or any other hard, sharp material can cause extensive damage and must not be placed into the machine.
- Only use the advised quantities of fabric softener and detergent. Damage to the fabric can ensue if you over-fill. Refer to the manufacturer's recommendations of quantities.
- Wash small items such as socks, laces, washable belts etc in a washing bag or pillow case as it is possible for such items to slip down between the tub and the inner drum.
- Do not use your washing machine to wash articles with whalebones, material without hems or torn material.
- Always unplug the appliance and turn off the water supply after use, clean and maintenance.
- Under no circumstances should you attempt to repair the machine yourself. Repairs carried out by inexperienced persons may cause injury or serious malfunctioning. Contact your local Service Centre. Always insist on genuine spare parts.

Installation

- This appliance is heavy. Care should be taken when moving it.
- When unpacking the appliance, check that it is not damaged. If in doubt, do not use it and contact the Service Centre.
- All packing and transit bolts must be removed before use. Serious damage can occur to the product and to property if this is not adhered to. See relevant section in the user manual.
- After having installed the appliance, check that it is not standing on the inlet and drain hose and the worktop is not pressing the electrical supply cable.
- If the machine is situated on a carpeted floor, please adjust the feet in order to allow air to circulate freely
- Always be sure, that there is no water leakage from hoses and their connections after the installation.
- If the appliance is installed in a location subject to frost, please read the «**dangers of freezing**» chapter.
- Any plumbing work required to install this appliance should be carried out by a qualified plumber or competent person.
- Any electrical work required to install this appliance should be carried out by a qualified electrician or competent person.

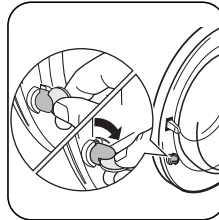
Use

- This appliance is designed for domestic use. It must not be used for purposes other than those for which it was designed.
- Only wash fabrics which are designed to be machine washed. Follow the instructions on each garment label.
- Do not overload the appliance. See the relevant section in the user manual.
- Before washing, ensure that all pockets are empty and buttons and zips are fastened. Avoid washing frayed or torn articles and treat stains such as paint, ink, rust, and grass before washing. Underwired bras must NOT be machine washed.
- Garments which have been in contact with volatile petroleum products should not be machine washed. If volatile cleaning fluids are used, care should be taken to ensure that the fluid is removed from the garment before placing in the machine.
- Never pull the power supply cable to remove the plug from the socket; always take hold of the plug itself.
- Never use the washing machine if the power supply cable, the control panel, the working surface or the base are damaged so that the inside of the washing machine is accessible.

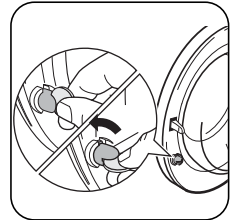
Child safety

- This appliance is not intended for use by person (including children) with reduced physical sensory or mental capabilities or lack of experience and knowledge unless they have been given supervision or instruction concerning use of the appliance by a person responsible for their safety.
- This washing machine is not intended for use by young children or infirm persons without supervision.
- Young children should be supervised to ensure that they do not play with the appliance.

- The packaging components (e.g. plastic film, polystyrene) can be dangerous to children - danger of suffocation! Keep them out of children's reach
- Keep all detergents in a safe place out of children's reach.
- Make sure that children or pets do not climb into the drum. To avoid this the machine incorporates special feature.



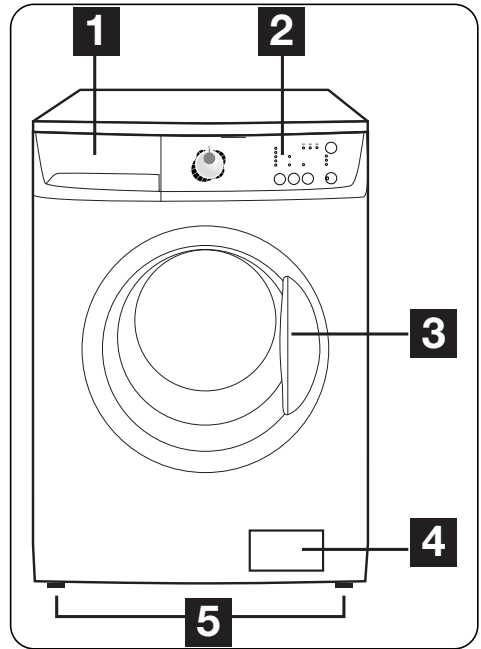
To **activate** this device, rotate the button (without pressing it) inside the door clockwise until the groove is horizontal. If necessary use a coin.



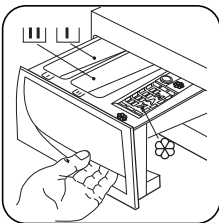
To **disable** this device and restore the possibility of closing the door, rotate the button anti-clockwise until the groove is vertical.

Description of the appliance

- 1** Detergent dispenser drawer
- 2** Control panel
- 3** Door opening handle
- 4** Drain pump
- 5** Adjustable feet



Detergent dispenser drawer



 Prewash

 Wash

 Fabric Softener

5 Start/Pause button	<ul style="list-style-type: none"> • This button allows to start the selected programme; the corresponding green pilot light stops flashing. • This button interrupts also a programme which is running, the corresponding green pilot light starts to flash.
6 Programme progress display	<ul style="list-style-type: none"> • The different pilot lights illuminate depending on the running programme phase.
7 Delay Start button	<ul style="list-style-type: none"> • This button allows to delay the starting of the washing programme by 3, 6, and 9 hours.

Buttons

RINSE HOLD - Button 2

By selecting this option the water of the last rinse is not emptied out to prevent the fabrics from creasing. When the programme has finished, the pilot light of button **5** is off and the door is blocked to indicate that the water must be emptied out.

OPTIONS - Button 3

Prewash

Select this option if you wish your laundry to be prewashed at 30°C before the main wash. The prewash ends with a short spin in programmes for Cotton and Synthetic fabrics, whereas in the programmes for Delicate fabrics the water is only drained.

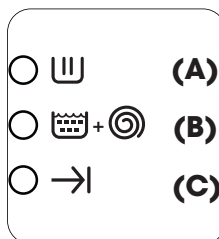
Super Quick

Short cycle for lightly soiled items or for laundry which needs only freshening up. We recommend you to reduce the fabrics loading.

Extra Rinse - Button 4

The machine performs some additional rinses during the washing cycle. This option is recommended for people who are allergic to detergents, and in areas where the water is very soft.

Programme progress display (6)



The light **A** illuminates after pressing button **5**.

The light **B** is on when the machine is rinsing or spinning.

The light **C** illuminates at the end of the washing cycle.

Programme table

Programme/ Temperature	Type of laundry	Options	Description of programme
WHITE/COLOURED COTTONS 95°	White (heavily soiled items)	Spin red./ Rinse Hold, Super Quick, Prewash, Extra Rinse	Main wash Rinses Long spin at the max spin speed
WHITE/COLOURED COTTONS 60°Eco	White and fast coloured cotton (normally soiled cotton items) ECONOMY	Spin red./Rinse Hold, Prewash, Extra Rinse	Main wash Rinses Long spin at the max spin speed
WHITE/COLOURED COTTONS 60° - 40° - 30°	White and coloured cotton (normally soiled cotton items)	Spin red./Rinse Hold, Super Quick, Prewash, Extra Rinse	Main wash Rinses Long spin at the max spin speed
SYNTHETICS 60° - 40° - 30°	Synthetic or mixed fabrics	Spin red./Rinse Hold, Super Quick, Prewash, Extra Rinse	Main wash Rinses Short spin at 900 rpm
SYNTHETICS EASY IRON 40°	Synthetic or mixed fabrics (delicate items) EASY IRON	Spin red./Rinse Hold, Prewash, Extra Rinse	Main wash RInses Short spin at 900 rpm
DELICATES 40° - 30°	Delicate items	Spin red.*/Rinse Hold, Super Quick, Prewash, Extra Rinse	Main wash Rinses Short spin at 700 rpm
HANDWASH 40°-30°	Special programme for delicate fabrics with the «hand washing» care symbol	Spin red./Rinse Hold	Main wash Rinses Short spin at 900 rpm
WOOL 40°	Programme for wool «Pure new wool, non- shrink, machine washable» label	Spin red./Rinse Hold	Main wash Rinses Short spin at 900 rpm

* In the model ZWG 5160 the **Spin Reduction** cannot be selected

Programme table

Programme/ Temperature	Type of laundry	Options	Description of programme
SPORT INTENSIVE 40°	Special programme for heavily soiled sportswear items	Spin red./ Rinse Hold, Extra Rinse	Prewash Main wash Rinses Short spin at 900 rpm
CURTAINS 40°	Special delicate washing cycle for curtains	Spin red.*/Rinse Hold, Extra Rinse	Prewash Main wash Rinses Short spin at 700 rpm
SOAK 30°	Heavy soiled laundry (not for wool and handwash)		Soak for about 20 minutes at 30°C Stop with water in the tub
RINSES	Separate rinses cycle with softener, if needed, for hand washed cotton items	Spin red./ Rinse Hold, Extra Rinse	Rinses Long spin at the max speed
DRAIN	For emptying out the water		Draining of water
SPIN	Long spin at the max speed for hand washed cotton items	Spin reduction	Drain and long spin
O Cancelling / Switching off of the machine	To interrupt a running programme, to cancel an incorrect option selection or to switch the machine off,		

Max load for Cottons6 kg
 Max load for Synthetics and Delicates3 kg
 Max load for Easy Iron1 kg
 Max load for Wool and Handwash2 kg
 Max load for Sport Intensive2 kg
 Max load for Curtains 2 kg
 Max load for Soak6 kg

Max load for Cottons + Super Quick3 kg
 Max load for Synthetics
 and Delicates + Super Quick1,5 kg

* The **Spin Reduction** can NOT be selected for model ZWG 5160.

Programme information

Easy Iron	Selecting this programme the laundry is gently washed and spun to avoid any creasing. In this way ironing is easier. Furthermore the machine will perform additional rinses.
Sport Intensive	This programme is suitable for washing heavily soiled sport items. The machine will add automatically a prewash phase before the main wash to eliminate mud stains. We recommend you NOT to put the detergent into the compartment II of the detergent drawer.
Soak	<p>This is a special programme for heavily soiled laundry. The machine performs a soak at 30°C. At the end of the soak time the machine will stop automatically with water left in the tub. This programme cannot be used for very delicate fabrics as silk or wool. Before starting a new washing phase, it is necessary to empty out the water by:</p> <ul style="list-style-type: none"> ● Draining only: turn the programme selector dial to Drain programme. (Depress the button 5). ● Draining and spin: turn the programme selector dial to programme Spin, reduce the spin speed by means of button 2, and then depress button 5. <p>Important! Pour the detergent for the soak programme into the compartment marked II. At the end of the soak (after having emptied out the water) you can select the washing programme. First turn the programme selector dial to «O», then select the programme and depress the button 5.</p>
Rinse	With this separate programme it is possible to rinse and spin cotton garments which have been washed by hand. The machine performs 3 rinses, followed by a final spin at maximum speed. The spin speed can be reduced by depressing button 2 .
Drain	For emptying out the water of the SOAK programme or at the end of a programme with Rinse Hold option. Turn first the programme selector dial to « O », then select programme Drain and depress the button 5 .
Spin	Separate spin for cotton items washed by hand. According to the type of fabric, it is possible to choose a different speed by means of the relevant button from one proposed by the machine. This programme can be selected for emptying out the water of the SOAK programme or at the end of a programme with Rinse Hold option.

Washing hints

Sorting the laundry

Follow the wash code symbols on each garment label and the manufacturer's washing instructions. Sort the laundry as follows: whites, coloureds, synthetics, delicates, woolen.

Temperatures

90° or 95°	for normally soiled white cottons and linen (e.g. tea cloths, towels, tablecloths, sheets...)
50°/60°	for normally soiled, colour fast garments (e.g. shirts, night dresses, pyjamas....) in linen, cotton or synthetic fibres and for lightly soiled white cotton (e.g. underwear).
30°-40°	for delicate items (e.g. net curtains), mixed laundry including synthetic fibres and woolen bearing the label «pure new wool, machine washable, non-shrink».

Before loading the laundry

Never wash whites and coloureds together. Whites may lose their «whiteness» in the wash.

New coloured items may run in the first wash; they should therefore be washed separately the first time.

Make sure that no metal objects are left in the laundry (e.g. hair clips, safety pins, pins). Button up pillowcases, close zip fasteners, hooks and poppers. Tie any belts or long tapes.

Remove persistent stains before washing.

Rub particularly soiled areas with a special detergent or detergent paste.

Treat curtains with special care. Remove hooks or tie them up in a bag or net.

Maximum loads

Recommended loads are indicated in the programme charts.

General rules:

Cotton, linen: drum full but not too tightly packed;

Synthetics: drum no more than half full;

Delicate fabrics and woolen: drum no more than one third full.

Washing a maximum load makes the most efficient use of water and energy.

For heavily soiled laundry, reduce the load size.

Laundry weights

The following weights are indicative:

bathrobe	1200 g
napkin	100 g
quilt cover	700 g
sheet	500 g
pillow case	200 g
tablecloth	250 g
towelling towel	200 g
tea cloth	100 g
night dress	200 g
ladies' briefs	100 g
man's work shirt	600 g
man's shirt	200 g
man's pyjamas	500 g
blouse	100 g
men's underpants	100 g

Removing stains

Stubborn stains may not be removed by just water and detergent. It is therefore advisable to treat them prior to washing.

Blood: treat fresh stains with cold water. For dried stains, soak overnight in water with a special detergent then rub in the soap and water.

Oil based paint: moisten with benzine stain remover, lay the garment on a soft cloth and dab the stain; treat several times.

Dried grease stains: moisten with turpentine, lay the garment on a soft surface and dab the stain with the fingertips and a cotton cloth.

Rust: oxalic acid dissolved in hot water or a rust removing product used cold. Be careful with rust stains which are not recent since the cellulose structure will already have been damaged and the fabric tends to hole.

Mould stains: treat with bleach, rinse well (whites and fast coloureds only).

Grass: soap lightly and treat with bleach (whites and fast coloureds only).

Ball point pen and glue: moisten with acetone (*), lay the garment on a soft cloth and dab the stain.

Lipstick: moisten with acetone as above, then treat stains with methylated spirits. Remove any residual marks from white fabrics with bleach.

Red wine: soak in water and detergent, rinse and treat with acetic or citric acid, then rinse. Treat any residual marks with bleach.

Ink: depending on the type of ink, moisten the fabric first with acetone (*), then with acetic acid; treat any residual marks on white fabrics with bleach and then rinse thoroughly.

Tar stains: first treat with stain remover, methylated spirits or benzine, then rub with detergent paste.

(*) do not use acetone on artificial silk.

Detergents and additives

Good washing results also depend on the choice of detergent and use of the correct quantities to avoid waste and protect the environment. Although biodegradable, detergents contain substances which, in large quantities, can upset the delicate balance of nature.

The choice of detergent will depend on the type of fabric (delicates, woolen, cottons, etc.),

the colour, washing temperature and degree of soiling.


All commonly available washing machine detergents may be used in this appliance:


- powder detergents for all types of fabric,
- powder detergents for delicate fabrics (60°C max) and woolen,
- liquid detergents, preferably for low temperature wash programmes (60°C max) for all types of fabric, or special for woolen only.

The detergent and any additives must be placed in the appropriate compartments of the dispenser drawer before starting the wash programme.

If using concentrated powder or liquid detergents, a programme **without** prewash must be selected.

The washing machine incorporates a recirculation system which allows an optimal use of the concentrated detergent.

Pour liquid detergent into the dispenser drawer compartment marked  **just before** starting the programme.

Any fabric softener or starching additives must be poured into the compartment marked  before starting the wash programme.

Follow the product manufacturer's recommendations on quantities to use and **do not exceed the «MAX» mark in the detergent dispenser drawer.**

Quantity of detergent to be used

The type and quantity of detergent will depend on the type of fabric, load size, degree of soiling and hardness of the water used. Water hardness is classified in so-called «degrees» of hardness. Information on hardness of the water in your area can be obtained from the relevant water supply company, or from your local authority. Follow the product manufacturers' instructions on quantities to use.

Degrees of water hardness

Follow the product manufacturers' instructions on quantities to use.

Level	Characteristic	Degrees	
		German °dH	French °T.H.
1	soft	0-7	0-15
2	medium	8-14	16-25
3	hard	15-21	26-37
4	very hard	> 21	> 37

Use less detergent if:

- you are washing a small load,
- the laundry is lightly soiled,
- large amounts of foam form during washing.

Before the first use

WARNING!

Ensure that the electrical and water connections comply with the installation instructions.

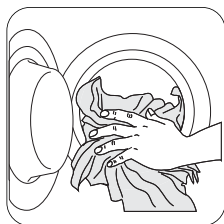
IMPORTANT!

Remove the polystyrene block and any material from the drum.

IMPORTANT!

We recommend you to pour 2 litres of water into the main wash compartment **[11]**, of the detergent drawer in order to activate the ECO valve. Then run a cotton cycle at 95°C, without any laundry in the machine, to remove any manufacturing residue from the drum and tub. Pour 1/2 a measure of detergent into the dispenser drawer and start the machine.

Operating sequence

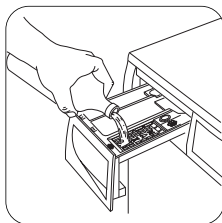
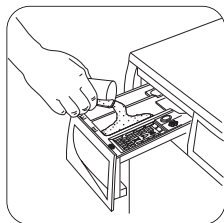




Load the laundry


Open the door by carefully pulling the door handle outwards. Place the laundry in the drum, one item at a time, shaking them out as much as

possible. Close the door.

Measure out the detergent and the fabric softener




Pull out the dispenser drawer until it stops. Measure out the amount of detergent required, pour it into the main wash compartment  and, if you wish to carry out a programme with the prewash or soak phase, pour it into the compartment marked .

If required, pour fabric softener into the compartment marked  (the amount used must not exceed the «MAX» mark in the drawer). Close the drawer gently.

Select the required programme by means of the programme selector dial (1)

Turn the programme selector dial to the required programme. The green light of button **5** starts to flash. It can be turned either clockwise or anticlockwise.

On position  the programme is reset and the machine is switched OFF.

At the end of the programme the selector dial must be turned to position , to switch the machine off.

ATTENTION!

If you turn the programme selector dial to another programme when the machine is working, the **red** pilot light of button will flash 3 times to indicate a wrong selection. The machine will not perform the new selected programme.

Select the spin speed or Rinse Hold option by pressing button **2**

The relevant light will light up.

When selecting a programme, the light corresponding to the maximum speed allowed for that programme will illuminate (refer to the section «Programme table» for the maximum allowed spin speed).

Select the desired option by means of buttons **3** and **4**

Depending on the programme, different functions can be combined. These must be selected after choosing the desired programme and before pressing the button **5**.

For the compatibility of the options with the washing programmes, refer to the section «Programme table».

Start the programme by pressing button **5**

To start the selected programme, press this button; the corresponding green pilot light stops flashing.

On programme progress display the pilot light **A** illuminates to indicate that the appliance starts operating and the door is locked.

IMPORTANT!

If an option which is not compatible with the set wash programme is selected, the **red** light of this button flashes for 3 times.

Select the delayed start by pressing button 7

This option permits to delay the start of the wash programme by 3, 6, 9 hours.

Press this button repeatedly to select the required delay. The relevant light illuminates.

You must select this option after you have set the programme and before you press the button 5.

Canceling the delayed start:

You can cancel the delay time at any moment, before you press the button 5.

If you have already pressed the button 5, and you wish to cancel the delay time, proceed as follows:

- set the washing machine to PAUSE by pressing the button 5;
- press the button 7 once, the light relevant to the selected delay goes off.
- press the button 5 again to start the programme.

IMPORTANT!

- The selected delay can be modified only after you have turned the programme selector dial to the «O» position and after you have selected the programme again.
- The door will be locked throughout the delay time. If you need to open the door, you must first set the washing machine to PAUSE by pressing the button 5 and wait few minutes before opening the door. After you have closed the door, press the button 5 again.

Note!

The Delay Start cannot be selected with DRAIN programme.

Altering an option or a running programme

It is possible to change any option before the programme carries it out.

Before you make any change, you must pause the washing machine by pressing the button 5.

Changing a running programme is possible only by resetting it. Turn the programme selector dial to «O» and then to the new programme position. Start the new programme by depressing the button 5 again.

The washing water in the tub will not empty out.

Interrupting a programme

Press the button 5 to interrupt a programme which is running, the corresponding light starts to flash. Press the button again to restart the programme.

Canceling a programme

Turn the selector dial to «O» to cancel a programme which is running. Now you can select a new programme.

Opening the door after the programme has started

First set the machine to pause by pressing the button 5.

After some minutes, the door can be opened.

If the machine is already heating, that the water level is above the bottom edge of the door, the door cannot be opened.

If you cannot open the door but you need to open it you have to switch the machine off by turning the selector dial to «O». After few minutes the door can be opened

(Pay attention to the water level and temperature!).

After this procedure, it will be necessary to set the programme and the options again and then press the button 5.

At the end of the programme

The machine stops automatically.

The pilot light of button **5** goes off while the phase light **C** illuminates. The door can be opened.

If at the end of a programme there is water in the tub, **to empty out the water follow the following instructions:**

- turn the programme selector dial to «**O**»
- select the DRAIN or SPIN programme
- reduce the spin speed if needed, by means of the relevant button
- press button **5**

At the end of the cycle, turn the programme selector dial to «**O**» to switch the machine off.

Remove the laundry from the drum and carefully check that the drum is empty.

If you do not intend to carry out another wash, close the water tap.

Leave the door open to prevent the formation of mildew and unpleasant smells.

Care and cleaning

IMPORTANT!

You must DISCONNECT the appliance from the electricity supply, before you can carry out any cleaning or maintenance work.

Descaling

The water we use normally contains lime. It is a good idea to periodically use a water softening powder in the machine. Do this separately from any laundry washing, and according to the softening powder manufacturer's instructions. This will help to prevent the formation of lime deposits.

Maintenance Wash

With the use of low temperature washes it is possible to get a build up of residues inside the drum.

We recommend that a maintenance wash be performed on a regular basis.

To run a maintenance wash:

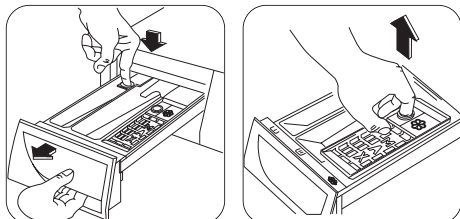
- The drum should be empty of laundry.
- Select the hottest cotton wash programme.
- Use a normal measure of detergent, must be a powder with biological properties.

External cleaning

Clean the exterior cabinet of the appliance with soap and water only, and then dry thoroughly.

Cleaning the dispenser drawer

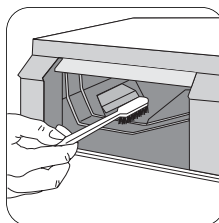
The washing powder and additive dispenser drawer should be cleaned regularly.



To aid cleaning, the top part of the additive compartment should be removed.

Remove the drawer by pressing the catch downwards and by pulling it out. Flush it out under a tap, to remove any traces of accumulated powder.

Cleaning the drawer recess



Having removed the drawer, use a small brush to clean the recess, ensuring that all washing powder residue is removed from the upper and lower

part of the recess.

Replace the drawer and run the rinse programme without any clothes in the drum.

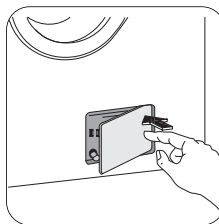
Cleaning the pump

The pump should be inspected if

- the machine does not empty and/or spin
- the machine makes an unusual noise during draining due to objects such as safety pins, coins etc. blocking the pump.

Proceed as follows:

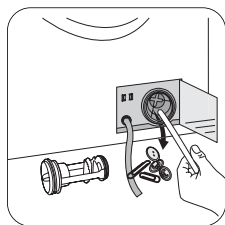
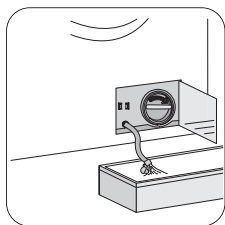
- Disconnect the appliance.
- If necessary wait until the water has cooled down.



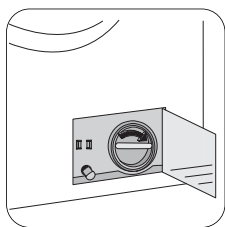
- Open the pump door.
- Place a container close to the pump to collect any spillage.
- Pull out the emergency emptying hose, place it in the

container and remove its cap.

- When no more water comes out, unscrew the pump cover and remove it. Always keep a rag nearby to dry up spillage of water when removing the cover.



- Remove any objects from the pump impeller by rotating it.
- Put the cap back on the emergency emptying hose and place the latter back in its seat.



- Screw the pump cover fully in.
- Close the pump door.

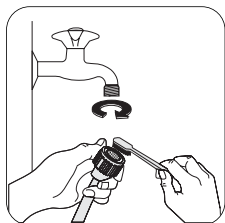
! IMPORTANT!

When the appliance is in use and depending on the programme selected there can be hot water in the pump.

Never remove the pump cover during a wash cycle, always wait until the appliance has finished the cycle, and is empty. When replacing the cover, ensure it is securely retightened so as to stop leaks and young children being able to remove it.

Cleaning the water inlet filter

If your water is very hard or contains traces of lime deposit, the water inlet filter may become clogged. It is therefore a good idea to clean it from time to time.



Turn off the water tap. Unscrew the water inlet hose. Clean the filter using a hard bristle brush. Tighten up the inlet hose.

The dangers of freezing

If the machine is exposed to temperatures below 0°C, certain precautions should be taken.

- Turn off the water tap.
- Unscrew the inlet hose.
- Place the end of the emergency emptying hose and that of the inlet hose in a bowl placed on the floor and let water drain out.
- Screw the water inlet hose back on and reposition the emergency emptying hose after having put the cap on again.
- When you intend to start the machine up again, make sure that the room temperature is above 0°C.

IMPORTANT!

Every time you drain the water through the emergency emptying hose you must pour 2 litres of water into the main wash compartment of the detergent drawer and then run the drain programme. This will activate the ECO VALVE device avoiding that part of the detergent remains unused at next washing.

Emergency emptying out

If the water is not discharged, proceed as follows to empty out the machine:

- pull out the plug from the power socket;
- close the water tap;
- if necessary, wait until the water has cooled down;
- open the pump door;
- place a bowl on the floor and place the end of the emergency emptying hose into the bowl. Remove its cap. The water should drain by gravity into the bowl. When the bowl is full, put the cap back on the hose. Empty the bowl. Repeat the procedure until water stops flowing out;
- clean the pump if necessary as previously described;
- replace the emergency emptying hose in its seat after having plugged it;
- screw the pump cover again and close the door.

Something not working

IMPORTANT!

Certain problems are due to lack of simple maintenance or oversights, which can be solved easily without calling out an engineer. Before contacting your local Service Centre, please carry out the checks listed below.

During machine operation it is possible that the **red** pilot light of button **5** flashes to indicate that the machine is not working.

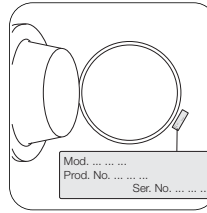
Once the problem has been eliminated, press the button **5** to restart the programme. If after all checks, the problem persists, contact your local Service Centre.

Malfunction	Possible Cause / Solution
<p>The washing machine does not start:</p>	<p>The door has not been closed. (Red pilot light flashes)</p> <ul style="list-style-type: none"> ● Close firmly the door. <p>The plug is not properly inserted in the power socket.</p> <ul style="list-style-type: none"> ● Insert the plug into the power socket. <p>There is no power at the socket.</p> <ul style="list-style-type: none"> ● Please check your domestic electrical installation. <p>The main fuse has blown.</p> <ul style="list-style-type: none"> ● Replace the fuse. <p>The selector dial is not correctly positioned and the button 5 has not been pressed.</p> <ul style="list-style-type: none"> ● Please turn the selector dial and press the button 5 again. <p>The button 7 has been selected.</p> <ul style="list-style-type: none"> ● If the laundry are to be washed immediately, cancel the delay start
<p>The machine does not fill:</p>	<p>The water tap is closed. (Red pilot light flashes)</p> <ul style="list-style-type: none"> ● Open the water tap. <p>The inlet hose is squashed or kinked. (Red pilot light flashes)</p> <ul style="list-style-type: none"> ● Check the inlet hose connection. <p>The filter in the inlet hose is blocked. (Red pilot light flashes)</p> <ul style="list-style-type: none"> ● Clean the water inlet hose filter. <p>The door is not properly closed. (Red pilot light flashes)</p> <ul style="list-style-type: none"> ● Close firmly the door.

Malfunction	Possible Cause / Solution
The machine fills then empties immediately:	<p>The end of the drain hose is too low.</p> <ul style="list-style-type: none"> Refer to relevant paragraph in «water drainage» section.
The machine does not empty and/or does not spin:	<p>The drain hose is squashed or kinked. (Red pilot light flashes)</p> <ul style="list-style-type: none"> Check the drain hose connection. <p>The drain pump is clogged. (Red pilot light flashes)</p> <ul style="list-style-type: none"> Clean the drain pump. <p>The laundry is not evenly distributed in the drum.</p> <ul style="list-style-type: none"> Redistribute the laundry. <p>The RINSE HOLD option or SOAK programme have been selected.</p> <ul style="list-style-type: none"> Disable the option. Select the option DRAIN or SPIN.
There is water on the floor:	<p>Too much detergent or unsuitable detergent (creates too much foam) has been used.</p> <ul style="list-style-type: none"> Reduce the detergent quantity or use another one. <p>Check whether there are any leaks from one of the inlet hose fittings. It is not always easy to see this as the water runs down the hose; check to see if it is damp.</p> <ul style="list-style-type: none"> Check the water inlet hose connection. <p>The inlet hose is damaged.</p> <ul style="list-style-type: none"> Change it with a new one. <p>The cap on the emergency emptying hose has not been replaced after cleaning the pump.</p> <ul style="list-style-type: none"> Put the cap back on the emergency emptying and place the latter back in its seat.
Unsatisfactory washing results:	<p>Too little detergent or unsuitable detergent has been used.</p> <ul style="list-style-type: none"> Increase the detergent quantity or use another one. <p>Stubborn stains have not been treated prior to washing.</p> <ul style="list-style-type: none"> Use commercial products to treat the stubborn stains. <p>The correct temperature was not selected.</p> <ul style="list-style-type: none"> Check if you have selected the correct temperature. <p>Excessive laundry load.</p> <ul style="list-style-type: none"> Introduce into the drum less laundry.

Malfunction	Possible Cause / Solution
<p>The door will not open:</p>	<p>The programme is still running.</p> <ul style="list-style-type: none"> • Wait the end of washing cycle. <p>The door lock has not been released.</p> <ul style="list-style-type: none"> • Wait until the door is released. <p>There is water in the drum.</p> <ul style="list-style-type: none"> • Select drain or spin programme to empty out the water.
<p>The machine vibrates or is noisy:</p>	<p>The transit bolts and packing have not been removed.</p> <ul style="list-style-type: none"> • Check the correct installation of the appliance. <p>The support feet have not been adjusted.</p> <ul style="list-style-type: none"> • Check the correct levelling of the appliance. <p>The laundry is not evenly distributed in the drum.</p> <ul style="list-style-type: none"> • Redistribute the laundry. <p>Maybe there is very little laundry in the drum.</p> <ul style="list-style-type: none"> • Load more laundry.
<p>Spinning starts late or the machine does not spin:</p>	<p>The electronic unbalance detection device has cut in because the laundry is not evenly distributed in the drum. The laundry is redistributed by reverse rotation of the drum. This may happen several times before the unbalance disappears and normal spinning can resume. If, after 10 minutes, the laundry is still not evenly distributed in the drum, the machine will not spin. In this case, redistribute the load manually and select the spin programme.</p> <ul style="list-style-type: none"> • Redistribute the laundry.
<p>The machine makes an unusual noise</p>	<p>The machine is fitted with a type of motor which makes an unusual noise compared with other traditional motors. This new motor ensures a softer start and more even distribution of the laundry in the drum when spinning, as well as increased stability of the machine.</p>
<p>No water is visible in the drum</p>	<p>Machines based on modern technology operate very economically using very little water without affecting performance.</p>

If you are unable to identify or solve the problem, contact our service centre. Before telephoning, make a note of the model, serial number and purchase date of your machine: the Service Centre will require this information.



Technical data

Dimensions	Width	60 cm
	Height	85 cm
	Depth (including the porthole)	63 cm
Electrical connection Voltage - Overall power - Fuse	Information on the electrical connection is given on the rating plate on the inner edge of the appliance door	
Water supply pressure	Minimum	0,05 MPa
	Maximum	0,8 MPa
Maximum Load	Cotton	6 kg
Spin Speed	Maximum	1200 rpm (ZWG 5120)
		1400 rpm (ZWG 5140)
		1600 rpm (ZWG 5160)

Consumption values

Programme	Energy consumption (in kWh)	Water consumption (in litres)	Programme duration
Cotton 95°	2.0	61	135
Cotton 60°E	1.02	54	155
Cotton 60°	1.3	58	120
Synthetics 60°	1.0	54	90
Synthetics 40° Easy Iron	0.35	60	90
Delicates 40°	0.55	60	65
Handwash 40°	0.4	53	60
Wool 40°	0.4	53	60
Sport Intensive 40°	0.65	59	100
Curtains 40°	0.55	75	90
Soak 30°	0.4	19	45
Rinse	0.1	42	45
Drain	-	-	2
Spin	-	-	10

Infos

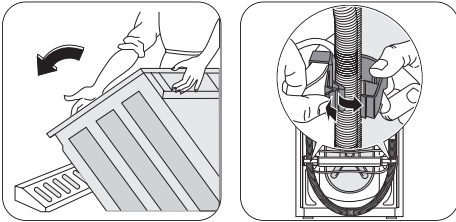
The consumption data shown on this chart is to be considered purely indicative, as it may vary depending on the quantity and type of laundry, on the inlet water temperature and on the ambient temperature. It refers to the highest temperature for each wash programme.

(*) The **COTTON 60°Eco** with a load of 6 kg is the reference programme for the data entered in the energy label, in compliance with EEC 92/75 standards.

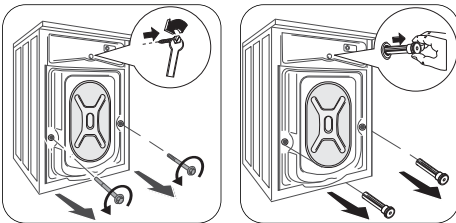
Installation instruction

Unpacking

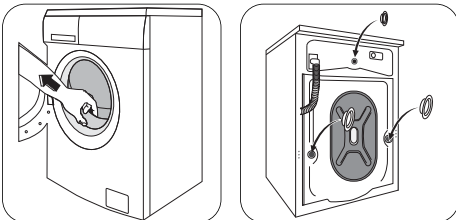
All transit bolts and packing must be removed before using the appliance. You are advised to keep all transit devices so that they can be refitted if the machine ever has to be transported again.



1. After removing all the packaging, carefully lay machine on it's back to remove the polystyrene base from the bottom.
2. Remove the power supply cable and the hoses from the hose holders on the rear of the appliance.



3. Unscrew the three bolts.
4. Slide out the relevant plastic spacers.



5. Open the porthole and remove the polystyrene block fitted on the door seal.
6. Fill the smaller upper hole and the two large ones with the corresponding plastic

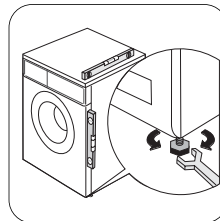
plugcaps supplied in the bag containing the instruction booklet.

Positioning

Install the machine on a flat hard floor. Make sure that air circulation around the machine is not impeded by carpets, rugs etc. Check that the machine does not touch the wall or other kitchen units. Level the washing machine by raising or lowering the feet. The feet may be tight to adjust as they incorporate a self locking nut, but the machine **MUST** be level and stable.

Any necessary adjustment can be made with a spanner.

Accurate levelling prevents vibration, noise and displacement of the machine during operation. Never place cardboard, wood or similar materials under the machine to compensate for any unevenness in the floor.

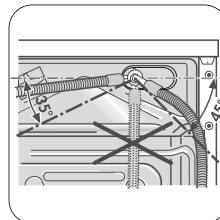


If necessary, check the setting with a spirit level.

Water inlet

An inlet hose is supplied and can be found inside the machine drum.

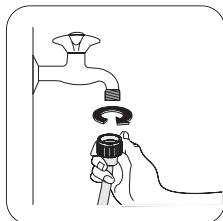
Do not use the hose from your previous machine to connect to the water supply.



! Attention !

Do not place the inlet hose downwards. Angle the hose to the left or right depending on the position of your water tap.

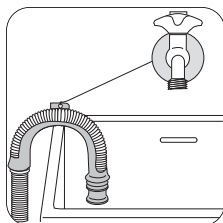
1. Set the hose correctly by loosening the ring nut. After positioning the inlet hose, be sure to tighten the ring nut again to prevent leaks.



2. Connect the hose to a tap with a 3/4" thread. Always use the hose supplied with the appliance.

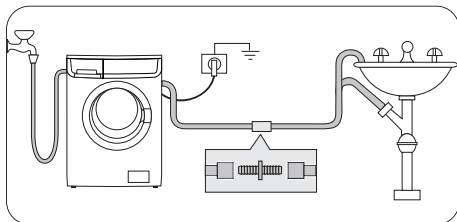
Water drainage

The end of the drain hose can be positioned in three ways:



Hooked over the edge of a sink using the plastic hose guide supplied with the machine. In this case, make sure the end cannot come unhooked when the machine is emptying. This could be done by

tying it to the tap with a piece of string or attaching it to the wall.



In a sink drain pipe branch. This branch must be above the trap so that the bend is at least 60 cm above the ground.

Directly into a drain pipe at a height of not less than 60 cm and not more than 90 cm. The

end of the drain hose must always be **ventilated**, i.e. the inside diameter of the drain pipe must be larger than the outside diameter of the drain hose.

The drain hose must not be kinked.

Electrical connection

This machine is designed to operate on a 230 V, single-phase, 50 Hz supply.

Check that your domestic electrical installation can take the maximum load required (2.2 kW), also taking into account any other appliances in use.

! Attention!

Connect the machine to an earthed socket.

The manufacturer declines any responsibility for damage or injury through failure to comply with the above safety precaution.

! Attention!


Should the appliance power supply cable need to be replaced, this **MUST** be carried out by our Service Centre.

NOTE

Please ensure that when the appliance is installed it is easily accessible for the engineer in the event of a breakdown.

Environmental concerns

Packaging materials

The materials marked with the symbol  are recyclable.

>PE<=polyethylene


>PS<=polystyrene

>PP<=polypropylene

This means that they can be recycled by disposing of them properly in appropriate collection containers.

Old machine

Use authorised disposal sites for your old appliance. Help to keep your country tidy!

The symbol  on the product or on its packaging indicates that this product may not be treated as household waste. Instead it shall be handed over to the applicable collection point for the recycling of electrical and electronic equipment. By ensuring this product is disposed of correctly, you will help prevent potential negative consequences for the environment and human health, which could otherwise be caused by inappropriate waste handling of this product. For more detailed information about recycling of this product, please contact your local city office, your household waste disposal service or the shop where you purchased the product.

Ecological hints

To save water, energy and to help protect the environment, we recommend that you follow these tips:

- Normally soiled laundry may be washed without prewashing in order to save detergent, water and time (the environment is protected too!).
- The machine works more economically if it is fully loaded.
- With adequate pre-treatment, stains and limited soiling can be removed; the laundry can then be washed at a lower temperature.
- Measure out detergent according to the water hardness, the degree of soiling and the quantity of laundry being washed.

www.electrolux.com

www.zanussi.be