

Contents

Getting started 4

Assemble the phone, SIM card, battery, make a call, replace covers.

Getting to know your phone 9

Phone overview, use the menus, enter letters, activity menu, and file manager.

Calling 18

Calls, contacts, voice control, call options.

Messaging 34

Text messaging, picture messaging, voice messaging, email, My friends.

Imaging 43

Camera, video recorder, pictures, PhotoDJ™.

Entertainment 48

Media player, PlayNow™, ringtones, MusicDJ™, VideoDJ™, sound recorder, themes, games.

Sony Ericsson Z520i

Connectivity 56

Internet and email settings, synchronizing, Bluetooth, infrared, and optional USB cable.

More features 65

Time and date, alarm clock, calendar, tasks, Java™ applications, SIM card lock, etc.

Troubleshooting 73

Why doesn't the phone work the way I want?

Important information 77

Sony Ericsson Consumer Web site, safe and efficient use, warranty, declaration of conformity.

Icons 86

Icon descriptions.

Index 88

Sony Ericsson

GSM 900/1800/1900

This user guide is published by Sony Ericsson Mobile Communications AB, without any warranty.

Improvements and changes to this user guide necessitated by typographical errors, inaccuracies of current information, or improvements to programs and/or equipment, may be made by Sony Ericsson Mobile Communications AB at any time and without notice. Such changes will, however, be incorporated into new editions of this user guide.

All rights reserved.

©Sony Ericsson Mobile Communications AB, 2005

Publication number: EN/LZT 108 8066 R1A

Please note:

Some of the services in this user guide are not supported by all networks. *This also applies to the GSM International Emergency Number 112.*

Please contact your network operator or service provider if you are in doubt whether you can use a particular service or not.

Please read the *Guidelines for safe and efficient use* and the *Limited warranty* chapters before you use your mobile phone.

Your mobile phone has the capability to download, store and forward additional content, e.g. ringtones. The use of such content may be restricted

or prohibited by rights of third parties, including but not limited to restriction under applicable copyright laws. You, and not Sony Ericsson, are entirely responsible for additional content that you download to or forward from your mobile phone. Prior to your use of any additional content, please verify that your intended use is properly licensed or is otherwise authorized. Sony Ericsson does not guarantee the accuracy, integrity or quality of any additional content or any other third party content. Under no circumstances will Sony Ericsson be liable in any way for your improper use of additional content or other third party content.

The Bluetooth word mark and logos are owned by the Bluetooth SIG, Inc. and any use of such marks by Sony Ericsson is under license.

QuickShare™, PlayNow™, MusicDJ™, VideoDJ™ and Style-Up™ are trademarks or registered trademarks of Sony Ericsson Mobile Communications AB.

Microsoft, Windows and PowerPoint are either registered trademarks or trademarks of Microsoft Corporation in the U.S and other countries.

Mac OS is a trademark of Apple Computer, Inc., registered in the U.S. and other countries.

T9™ Text Input is a trademark or a registered trademark of Tegic Communications.

T9™ Text Input is licensed under one or more of the following: U.S. Pat. Nos. 5,818,437, 5,953,541,

5,187,480, 5,945,928, and 6,011,554; Canadian Pat. No. 1,331,057, United Kingdom Pat. No. 2238414B; Hong Kong Standard Pat. No. HK0940329; Republic of Singapore Pat. No. 51383; Euro.Pat. No. 0 842 463(96927260.8) DE/DK, FI, FR, IT, NL, PT, ES, SE, GB; and additional patents are pending worldwide.

Java and all Java based trademarks and logos are trademarks or registered trademarks of Sun Microsystems, Inc. in the U.S. and other countries.

End-user license agreement for Sun™ Java™ J2ME™.

- 1** Restrictions: Software is confidential copyrighted information of Sun and title to all copies is retained by Sun and/or its licensors. Customer shall not modify, decompile, disassemble, decrypt, extract, or otherwise reverse engineer Software. Software may not be leased, assigned, or sublicensed, in whole or in part.
- 2** Export Regulations: Software, including technical data, is subject to U.S. export control laws, including the U.S. Export Administration Act and its associated regulations, and may be subject to export or import regulations in other countries. Customer agrees to comply strictly with all such regulations and acknowledges that it has the responsibility to obtain licenses to export, re-export, or import Software. Software may not be downloaded, or otherwise exported or re-exported (i) into, or to a national or resident of, Cuba, Iraq, Iran, North Korea, Libya, Sudan, Syria (as such listing may be revised from

time to time) or any country to which the U.S. has embargoed goods; or (ii) to anyone on the U.S. Treasury Department's list of Specially Designated Nations or the U.S. Commerce Department's Table of Denial Orders.

- 3** Restricted Rights: Use, duplication or disclosure by the United States government is subject to the restrictions as set forth in the Rights in Technical Data and Computer Software Clauses in DFARS 252.227-7013(c) (1) (ii) and FAR 52.227-19(c) (2) as applicable.

Part of the software in this product is copyright © SyncML initiative Ltd. (1999-2002). All rights reserved.

Other product and company names mentioned herein may be the trademarks of their respective owners. Any rights not expressly granted herein are reserved.

Getting started

Assemble the phone, SIM card, battery, make a call, replace covers.

More information and downloads are available at www.SonyEricsson.com/support.

Instruction symbols

The following instruction symbols appear in this user guide:



Note




Indicates that a service or function is network- or subscription-dependent. Contact your network operator for details.



See also page ...



Use the selection keys or the navigation key to scroll and select,  *11 Keys and navigation*.



Press the navigation key centre.



Press the navigation key up.



Press the navigation key down.



Press the navigation key to the left.



Press the navigation key to the right.

Assembling the phone

Before you can use your phone you need to:

- Insert the SIM card.
- Attach and charge the battery.

SIM card

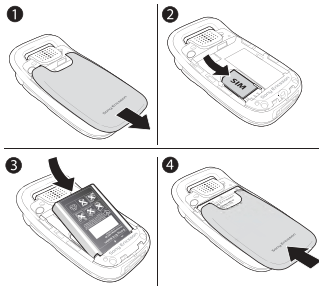
When you register as a subscriber with a network operator, you get a SIM (Subscriber Identity Module) card. The SIM card contains a computer chip that keeps track of your phone number, the services included in your subscription, and names and numbers in your contacts, among other things.



If you have been using a SIM card in another phone, make sure that your information is saved to the SIM card before you remove it from the other phone. For example, contacts may have been saved in the phone memory.

SIM card and battery information

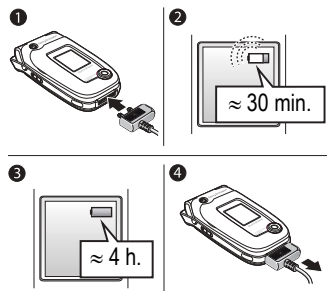
Always turn off the phone and detach the charger before you insert or remove a SIM card.

To insert SIM card and battery

- 1 Remove the battery cover by sliding it as shown in the picture. You may need to apply significant pressure the first time you remove the back cover.
- 2 Slide the SIM card into its holder. Make sure that the gold contacts of the SIM card are facing down, and the cut off corner is correctly aligned.
- 3 Place the battery on the back of the phone with the label side up and the connectors facing each other.
- 4 Place the battery cover as shown in the picture and slide it into place.


To charge the battery

It may take up to 30 minutes before the battery icon appears when charging.



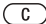
- 1 Connect the charger to the phone. The symbol on the charger plug must face upwards.
- 2 It may take up to 30 minutes before the battery icon appears on the screen.
- 3 Wait approximately 4 hours or until the battery icon indicates that the battery is fully charged. If you do not see the battery icon after this time, press a key to activate the screen.
- 4 Remove the charger by pulling it straight out.


Getting started

 *Some functions use more battery power than others and may cause a need for more frequent re-charging. However, talk-time or standby time may become noticeably shorter due to wear and you may have to replace your battery. Only use approved batteries from Sony Ericsson ➤ 80 Battery use and care.*

PIN

You may need a PIN (Personal Identity Number) to activate the services in your phone. The PIN is associated with your SIM card, and not with the phone. Your PIN is provided by your network operator. When you enter your PIN, each digit appears as *, unless your PIN starts with the same digits as an emergency number, for example 112. This is so that you can see and call an emergency number without entering a PIN.

If you make a mistake while entering your PIN, delete the number by pressing .


 *If you enter the wrong PIN three times in a row, the SIM card is blocked and the message PIN blocked appears. To unblock it, you need to enter your PUK (Personal Unblocking Key), ➤ 70 SIM card lock.*

Turning on the phone and making calls

Make sure that the phone is charged and your SIM card is inserted before you turn it on. When you have turned the phone on, you can use the setup wizard to quickly and easily prepare your phone for use.

To turn on the phone



- 1** Open the flip.
- 2** Press and hold .
- 3** Enter your SIM card PIN, if requested.
- 4** At first start-up, select the language you want for your phone menus.

- 5 ▶ Yes if you want the setup wizard to help you get started, and follow the instructions that appear. You can start the wizard from the menu system at any time, ▶ **Settings** ▶ the **General** tab ▶ **Setup wizard**.



The setup wizard function is operator-dependent.

To make and receive calls

Enter the phone number (with international prefix and area code if applicable) ▶ **Call** to make the call.

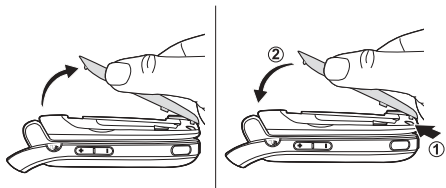
- ▶ **End call** to end the call. When the phone rings
- ▶ **Answer**.

Replacing Style-Up™ covers



Some kits may include additional Style-Up™ covers. Follow these instructions to replace covers.

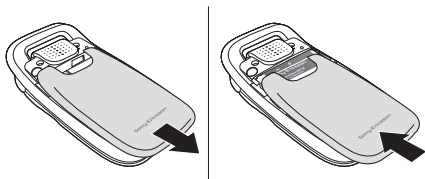
To replace the front cover



- 1 Locate the notches along the sides of the front cover, as shown.
- 2 Use your thumbnail to lift the front cover off the phone. It may be necessary to lift up on both sides of the front cover.
- 3 Locate the notches on the bottom of the front cover and the slots on the bottom of the frame of the phone.
- 4 Place the notches into the slots and snap the cover in place.

Getting started

To replace the back cover

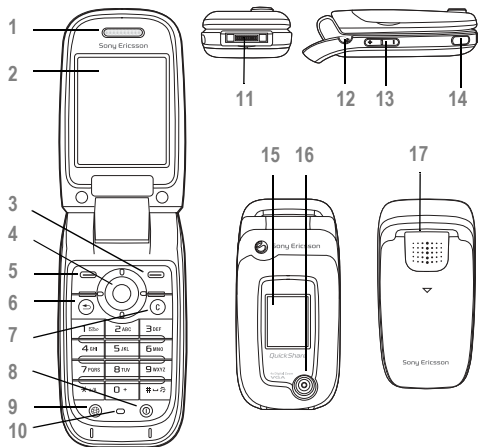




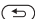
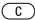



- 1** Apply pressure with the heel of one hand while pushing away with the thumb of your other hand. You may need to apply significant pressure the first time you remove the back cover.
- 2** Slide the back cover away from the hinge.
- 3** Remove the back cover.
- 4** Locate the notches along each side of the phone. Using the notches as a guide, slide the back cover upward applying pressure with the heel of your hand until it clicks in place.

Getting to know your phone

Phone overview, use the menus, enter letters, activity menu, and file manager.

Phone overview



- 1 Ear speaker
- 2 Screen
- 3, 5  Selection keys
- 4  Navigation key
- 6  Back key
- 7  Clear key
- 8  Power on/off
- 9  Internet key
- 10 Microphone
- 11 Stereo headset and charger connector
- 12  Camera/video button
- 13 Volume
- 14 Infrared port
- 15 External display
- 16 Camera
- 17 Loudspeaker

Overview, menu

1. PlayNow™*

2. Internet services*

3. Entertainment

- Games
- VideoDJ™
- PhotoDJ™
- MusicDJ™
- Remote control
- Record sound
- Demo tour

4. Camera

5. Messaging

- Write new
- Inbox
- My friends*
- Email
- Call voicemail
- Drafts
- Outbox
- Sent messages
- Saved messages
- Templates
- Settings

6. Media player

7. File manager

- Pictures
- Videos
- Sounds
- Themes
- Web pages
- Games
- Applications
- Other

8. Contacts**

- Contacts****
- Options:
- Speed dial
- My business card
- Groups**
- SIM contacts**
- Special numbers
- Advanced
- New contact

9. Alarms

- Alarm
- Recurrent alarm
- Alarm signal

10. Calls*

11. Organizer

- Applications
- Calendar
- Tasks
- Notes
- Synchronization
- Timer
- Stopwatch
- Calculator
- Code memo

12. Settings

- General**
- Profiles
- Time & date
- Language
- Voice control
- New events
- Phone status
- Shortcuts
- Locks
- Setup wizard
- Tips and tricks
- Master reset

Sounds & alerts

- Ring volume
- Ringtone
- Silent mode
- Increasing ring
- Vibrating alert
- Message alert
- Light effects
- Key sound

Display

- Main wallpaper
- External wallpaper
- Themes
- Start-up screen
- Screen saver
- Brightness
- Sleep mode clock
- Edit line names*

Calls

- Divert calls
- Switch to line 2*
- Manage calls
- Time & cost
- Show or hide no.
- Handsfree*

Connectivity


- Bluetooth
- Infrared port
- Synchronization
- Device mgmt.
- Mobile networks
- Data comm.
- Internet settings
- Streaming settings
- Settings for Java™
- Accessories

** Please note that some menus are operator-, network- and subscription-dependent.
** The menu depends on which contacts application is selected as default.*

Keys and navigation

Standby screen and main menu and status bar

The *standby screen* is displayed when you are not calling or using the menus. This is where you can see, for example, the name of your operator, the time and the date.

From standby, press  to enter the *main menu*, where the menus are shown as icons. Some submenus include tabs. Scroll to a tab using the navigation key and select an option.








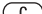

The status bar at the top of the screen contains icons, which give information related to the phone and its activities, ➡ *86 Icons*.

External display

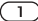
The external display of your phone shows the service provider, time, date, signal strength and the battery charge level.

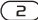
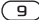
Relevant status information is shown on the external display. When the camera button is pressed and held with the flip closed, the external display functions as a viewfinder. Zoom is controlled with the upper and lower side volume keys.

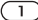
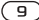
Keys and buttons


	Press to enter the main menu from standby. Press to select highlighted items. During a call, press to view a list of options.
 	Move through menus and tabs.
 	Press up to access the activity menu.
	Press to select the options shown immediately above these keys on the screen.
	Press to go back one level in the menus. Press and hold to return to standby or end a function.
	Press to delete text and items, such as pictures, sounds and contacts. During a call, press and hold to mute the microphone.
	Press to take a picture or to record a video clip.


Getting to know your phone


	Press and hold to call your voicemail service (if set).
---	---

 — 	Press and hold any of these keys to reach a contact beginning with a specific letter.
---	---

 — 	Press any of these keys and press Call to speed dial.
---	--

	<p>In standby, press to view status information.</p> <p>To reject a call, quickly press twice when receiving a call.</p> <p>Press once to turn off the ringtone when receiving a call.</p> <p>During a call, press to increase or decrease the volume.</p> <p>When using the media player, press to increase or decrease the volume.</p> <p>Press and hold to go forward or back one track.</p> <p>When using the camera, press to zoom in or out.</p> <p>Press and hold to voice dial, alternatively say your magic word (if set), ➤ <i>26 Voice dialling</i>.</p>
---	---

	Right selection key. To reject a call, quickly press the right selection key twice when receiving a call. Press the right selection key once to turn off the ringtone when receiving a call.
---	--

	Press and hold to set the phone to silent. The alarm signal rings even if the phone is set to silent. Press once to turn off the ringtone when receiving a call.
---	--

▶ Info	Get more information, explanations or tips about selected features, menus or functions available in your phone. Scroll to a menu item ▶ Info .
---------------	---

▶ More	Enter a list of options. There are different alternatives in the list of options depending on where you are in the menus.
---------------	---

Phone language

Most SIM cards automatically set the language used in the menu to the language of the country where you bought your SIM card. If this is not the case, the predefined language is English.



You can always choose language according to SIM by pressing 8888 in standby. You can always choose English by pressing 0000 in standby.

To change the phone language

- 1 ▶ Settings ▶ the General tab ▶ Language ▶ Phone language.
- 2 Select a language.

Shortcuts

A quicker way to move through the menus is to use shortcuts. You can use keypad shortcuts to quickly go to a menu, and you can use predefined navigation key shortcuts to quickly reach certain functions. You can edit the navigation key shortcuts to suit your own needs.

Using keypad shortcuts

Enter the menus by pressing and then enter the number of the menu to which you want to go. For example, to reach the fifth menu item, press . To reach the tenth, eleventh and twelfth menu items, press , and respectively. To go back to standby, press and hold .

Using navigation key shortcuts

In standby, press to go to a shortcuts menu, or , or to go directly to a function.

To edit a navigation key shortcut

▶ Settings ▶ the General tab ▶ Shortcuts and select which shortcut you want to edit ▶ Edit.

Entering letters

There are two ways of entering letters, for example, when writing a message or writing a name in contacts:

- Multitap text input

Press each key as many times as needed to show the letter you want.

- T9™ Text Input

The T9 Text Input method uses a built-in dictionary to recognize the most commonly used word for each sequence of key presses. This way, you press each key only once, even if the letter you want is not the first letter on the key.

Getting to know your phone

Writing languages

Before you start entering letters, select the languages you want to use when writing.

When writing, you can switch to one of your selected languages by pressing and holding (#↵).

To select writing language

- ▶ Settings ▶ the General tab ▶ Language ▶ Writing language.
- Scroll to each language that you want to use and mark it. ▶ Save to exit the menu.

To enter letters using multitap text input

- To enter text, you have to be in a function where text input is possible, for example ▶ Messaging ▶ Write new ▶ Text message.
- Press the appropriate key, (1) — (9), (0+) or (#↵), repeatedly until the character you want appears on the screen. You can see which characters you can choose in the box in the top right corner of the screen.





Example:

- To enter an 'A', press (2) once.
- To enter a 'B', quickly press (2) twice.
- To shift between capital and lower-case letters, press (*a/A), then enter the letter.
- You can use the volume buttons as a shortcut to certain letters. To enter a 'B', press and hold the (+) volume button and press (2). To enter a 'C', press and hold the (-) volume button and press (2).

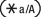
To enter letters using T9™ Text Input

- To enter text, you have to be in a function where text input is possible, for example ▶ Messaging ▶ Write new ▶ Text message.
- For example, if you want to write the word "Jane", press (5), (2), (6), (3).
- If the word shown is the one you want, press (#↵) to accept and add a space. To accept a word without adding a space, press (⊙). If the word shown is not the one you want, press (⊙) or (⊙) to view alternative words. Accept a word and add a space by pressing (#↵).
- Continue writing your message. To enter a full stop or other punctuation marks, press (1) and then (⊙) or (⊙) repeatedly. Accept by pressing (#↵).



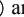

To add words to the T9 Text Input dictionary

- 1 While entering letters ► **More** ► **Spell word**.
- 2 Edit the word by using multitap input. Navigate between the letters with  and . To delete a character, press . To delete the entire word, press and hold .
- 3 When you have edited the word ► **Insert**. The word is added to the T9 Text Input dictionary. Next time you enter this word using T9 Text Input, it will appear as one of the alternative words.

To select another writing method

Before, or while entering letters, press and hold  to select another writing method.

Options list

- **More** to view a list of options. The list may contain some or all of the following:
- **Add symbol** — symbols and punctuation marks such as ? and , are shown. Move between the symbols by using , ,  and .
 - **Add item** — pictures, melodies, sounds, etc.
 - **Spell word** — for T9 Text Input only. Edit the suggested word by using multitap text input.


- **Writing language** — a list of available languages is shown.
- **Writing method** — a list of methods available for the current language is shown.
- **Dictionary (T9)** — turn T9 Text Input dictionary on or off.
- **Word suggestions** — select to view, or not, word suggestions when writing a word.
- **My words** — manage the words that you have added to the dictionary.
- **National chars.** — turn off language-specific characters to save space. This option appears only for some writing languages.



Activity menu

You can open the activity menu almost anywhere in the phone to view and handle new events, and access bookmarks and shortcuts.



Activity menu tabs

- **New events** — this shows new events such as missed calls and messages. When a new event occurs, the tab appears on the screen. Press  to dismiss or delete an event from the event tab.

Getting to know your phone

- **My shortcuts** — this shows your shortcuts. You can add, delete and change the order of shortcuts. When you select a shortcut and the application opens, other programs are closed or minimized.
- **Bookmarks** — this shows your own Internet bookmarks. When you select a bookmark and the browser opens, other programs are closed or minimized.

To open and close the activity menu

From anywhere in the phone, .
Press  to exit the activity menu.


To view events

- 1 ▶ View.
- 2 ▶ More to see additional options.

To set notification for new events

- 1 ▶ Settings ▶ General ▶ New events.
- 2 Select how new events will show.

To add a shortcut

- 1 .
- 2 ▶ Add shortcut ▶ Add.
- 3 Select the menu you want to add to your shortcuts list.

File manager

Use the file manager to handle files (for example, pictures, video clips and sounds) saved in the phone memory. Items such as **Pictures**, **Videos**, **Sounds**, **Themes**, **Web pages**, **Games** and **Applications** are saved as files in folders. All files that the phone cannot recognize are saved in the **Other** folder. You can create your own subfolders in some predefined folders, to which you can move your saved files.

When handling files, you can select several or all files in a folder at the same time.

To use a file from the file manager

- 1 Highlight a file in the **Pictures** or **Sounds** folder.
- 2 ▶ More ▶ Use as. Select what you want to use the file for.

To move a file to a folder

- 1 ▶ File manager and open a folder.
- 2 Scroll to a file, for example, a picture that you want to move ▶ More ▶ Manage files ▶ Move to folder.
- 3 Select the folder you want to move the file to, or select **New folder** and name the folder ▶ OK.

To create a subfolder

- 1 ▶ **File manager** and open a folder.
- 2 ▶ **More** ▶ **New folder** and enter a name for the folder.
- 3 ▶ **OK** to save the folder.

To select several files

- 1 ▶ **File manager** and select a file ▶ **More** ▶ **Mark** ▶ **Mark several**.
- 2 Scroll and select more files by pressing **Mark** or **Unmark**.

To select all files in a folder

- ▶ **File manager** and select a file ▶ **More** ▶ **Mark** press **Mark all** or **Unm. all** to remove the selection.

File information

Items that are downloaded, or received using one of the available transfer methods, may be copyright-protected. If a file is protected, you may not be able to copy or send that file. You can select to view information for the file.

Light effects

Use the Light effects feature to personalize your phone. Light effects will notify you of an event, such as an incoming call or a new message. You can also associate light effects with your contacts.

Certain light effects cannot be turned off, such as open and close the phone, and attach and detach an accessory.



Please note that the light effects could be distracting when driving at night. Please exercise caution.

*To turn off the light effects, go to **Settings***

*▶ **Sounds & alerts** ▶ **Light effects**.*

Calling

Calls, contacts, voice control, call options.

Making calls


Before you can make or receive any calls, you must turn on the phone and be within range of a network.

➡ *6 Turning on the phone and making calls.*

Networks

When you turn on the phone, it automatically selects your home network if this is within range. If it is not within range, you may use another network, provided your network operator has an agreement that allows you to do so. This is called roaming.

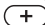

You can select the network you want to use, or you can add a network to your list of preferred networks. You can also change the order in which networks are selected during an automatic search. For all such options ▶ **Settings** ▶ the **Connectivity** tab ▶ **Mobile networks**.

 You can call numbers from the call list and contacts, ➡ *24 Call list*, and ➡ *20 Contacts*. You can also use your voice to make calls, ➡ *25 Voice control*.

To make a call

- 1 Enter the phone number (with international country code and area code if applicable).
- 2 ▶ **Call** to make the call.
- 3 ▶ **End call** to end the call.

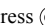
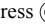
To change the ear speaker volume


Press  or  to increase or decrease the ear speaker volume during a call.

To activate the loudspeaker before a call is answered

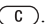

Press the left selection key.

To use the loudspeaker during a voice call

- 1 Press  and select **Turn on speaker** to turn on the loudspeaker.
- 2 Press  and select **Turn off speaker** to turn off the loudspeaker.

 Do not hold the phone to your ear while using the loudspeaker. This could damage your hearing.

To turn off the microphone

- 1 Press and hold .
- 2 To resume the conversation, press  again.

Receiving calls

When you receive a call, the phone rings and the caller's number is displayed (if your subscription includes the Calling Line Identification service and the caller's number is identified).

If the number is in your contacts, the name, number, picture and light effect (if assigned) are displayed. If the number is a restricted number, **Withheld** is displayed.

To answer a call

- Open your phone.
- If your phone is already open ► **Answer**.
- Press the portable handsfree button, if applicable.

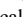
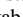


To reject a call

- Close your phone.
- ► **Busy**.
- Quickly press either side volume key twice.

Missed calls

If you have missed a call, and the activity menu is set to off, **Missed calls:** appears in standby, indicating the number of missed calls. To view the missed calls in the call list ► **Yes**. If you want to view the missed calls later ► **No**.

To check your missed calls

- 1 From standby ► **Calls** and scroll to the missed calls tab. Use  or  to scroll between the tabs.
- 2 Use  or  to scroll to a number and ► **Call** to call a number.

Automatic redialling

To redial a number

If the connection of the call failed and **Retry?** is displayed ► **Yes**.



Do not hold the phone to your ear while waiting. When the call is connected, the phone gives a loud signal.

The phone redials the number up to ten times or until:

- The call is connected
- You press **Cancel**
- You receive a call


Automatic redialling is not available for data calls.

Making international calls

When you make an international call, the + sign replaces the international prefix number of the country from which you are calling. You can make a call from abroad, using another network, provided your network operator has an agreement with that network.


Calling

To make international calls

- 1 Press and hold  until a + sign appears on the screen.
- 2 Enter the country code, area code (without the leading zero) and phone number ► Call.

Emergency calls

Your phone supports the international emergency numbers, for example, 112 or 911. This means that these numbers can normally be used to make an emergency call in any country, with or without a SIM card inserted, if a GSM network is within range.

 *In some countries, other emergency numbers may also be promoted. Your network operator may therefore have saved additional local emergency numbers on the SIM card.*

To make an emergency call

Enter the emergency number ► Call.

To view your local emergency numbers

- Contacts ► Options ► Special numbers
- Emergency nos.

Contacts

You can save your contact information in the phone memory as contacts, or on the SIM card as names and numbers. You can choose which contacts information — **Phone contacts** or **SIM contacts** — is shown as default.

For useful information and settings ► **Contacts** ► **Options**.

Default contact



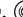
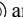
If you select to use **Phone contacts** as default, your contacts will show all information saved in **Contacts**. If you select **SIM contacts** as default, the contacts will only show names and numbers saved on the SIM card.

To select default contacts

- 1 ► **Contacts** ► **Options** ► **Advanced** ► **Default contacts**.
- 2 Select **Phone contacts** or **SIM contacts**.

Contacts

Contacts is like an address book, in which you can store names, phone numbers and email addresses. You can also add pictures, ringtones, light effects and personal information, such as birthday, email, Web and street addresses, to the contacts.

When you add information to a contact, the information is organized under five tabs. Use , ,  and  to scroll between the tabs and their information fields.

SIM contacts

On your SIM card, you can save entries as a name with a single number. The number of entries you can save depends on the amount of memory available on the SIM card, see **Contacts** ► **Options** ► **Advanced** ► **Memory status**.



Contact your network operator for more information.

To add a phone contact

- 1 ► **Contacts** ► **New contact** ► **Add**.
- 2 Enter the name directly or press **Add** and enter the name ► **OK**.
- 3 Enter the number directly or press **Add** and enter the number ► **OK**.

- 4 Select a number type.
- 5 Scroll between the tabs and select fields to enter more information. To enter symbols, for example, @ in an email address ► **Symbols** and select a symbol ► **Insert**.
- 6 When you have entered the information ► **Save**.

To add a SIM contact





If SIM contacts are default contacts, follow the same steps as for adding a phone contact. You can add only name and number to SIM contacts.

Pictures and personal ringtones

You can add a picture and a personal ringtone to a phone contact. When that person calls, the picture is displayed (provided your subscription supports the Calling Line Identification service) and the ringtone is played.

Calling

To add a picture, light effect or a ringtone to a phone contact

- 1 ▶ **Contacts** and select the contact you want to add a picture, ringtone or light effect to ▶ **More** ▶ **Edit contact**.
- 2 Use , ,  and  to scroll to the relevant tab. ▶ **Picture**; **Ringtone**; or **Light effects** ▶ **Add**.
- 3 Select a picture, sound or light effect ▶ **Save** to save the contact.



Calling contacts

You can call one of the numbers saved for one of your contacts, or a number on your SIM card.

If phone contacts are set as default, you can choose to call from contacts or from the SIM card.

If SIM contacts are set as default, you can only call the numbers on the SIM card.

To call a phone contact

- 1 ▶ **Contacts**. Scroll to, or enter the first letter or letters of the contact you want to call.
- 2 When the contact is highlighted, press  or  to select a number ▶ **Call**.

To call a SIM contact

- 1 ▶ **Contacts**. If SIM contacts are set as default, select the name and number you want to call from the list ▶ **Call**.
- 2 If phone contacts are set as default ▶ **Contacts** ▶ **Options** ▶ **SIM contacts** and select the name and number you want to call from the list ▶ **Call**.

Ask to save

When you end a call or receive a message, the phone can prompt you to add a phone number to your contacts.





To activate ask to save

- ▶ **Contacts** ▶ **Options** ▶ **Advanced**
- ▶ **Ask to save** ▶ **On**.

Updating contacts

You can easily update and edit any information in your contacts.

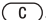
To edit a phone contact

- 1 ▶ **Contacts** and select a contact ▶ **More** ▶ **Edit contact**.
- 2 Use , ,  and  to scroll to the relevant tab and edit the information you want to edit ▶ **Save**.

To edit a SIM contact

- 1 If SIM contacts are set as default ► **Contacts** and select the name and number you want to edit. If phone contacts are set as default ► **Contacts** ► **Options** ► **SIM contacts**. Select the name and number you want to edit.
- 2 ► **More** ► **Edit** and edit the name and number.

To delete a contact

► **Contacts** and scroll to the contact you want to delete, press .

To delete all contacts

- 1 ► **Contacts** ► **Options** ► **Advanced**
► **Delete all contacts**.
- 2 ► **Yes** and enter the phone lock code ► **OK**.
The default phone lock code is 0000. Names and numbers that are saved on the SIM card are not deleted.

Default items for phone contacts

A default item is displayed in the first position for a phone contact, and is therefore quicker to access. You can set the default item — a phone number, email address or a Web address — to be displayed first for each contact. If you do not set your own default item, the mobile phone number is the default item.

To set the default item for a contact

- 1 ► **Contacts** and scroll to a contact ► **More**
► **Default number**.
- 2 Select the phone number, email address or Web address that you want as default item.

Sending contacts

You can send contacts using one of the available transfer methods.

To send a contact

- **Contacts** and select a contact ► **More**
- **Send contact** and select a transfer method.

To send all contacts

- **Contacts** ► **Options** ► **Advanced**
- **Send all contacts** and select a transfer method.

Checking the memory

With the memory status function, you can check how many positions you have left in the phone memory and SIM memory.

To check the memory

- **Contacts** ► **Options** ► **Advanced**
- **Memory status**.

Calling

Synchronizing contacts


You can back up and synchronize your contacts with a contacts application on the Web. For more information, please contact your service provider. You can also synchronize your contacts with a computer application, ➡ *59 Synchronizing*.

To synchronize contacts

- 1 ▶ **Contacts** ▶ **Options** ▶ **Sync. contacts**.
- 2 If you have more than one account, select which account to use ▶ **Select**. If you do not have an account in the phone, ➡ *60 To enter the remote synchronization settings*.

Copying contacts

You can copy names and numbers to and from your phone contacts and the SIM card. Choose if you want to copy all numbers, or a single number.

 *When you select to copy all contacts from the phone to the SIM card, all existing information on the SIM card will be replaced.*

You can also set the phone to save entries automatically to the SIM card. With this setting, names and phone numbers that you add to or edit in your phone contacts in the phone memory are

also saved on the SIM card. The number of phone numbers that can be saved depends on the type of SIM card.

To copy names and numbers to the SIM card

- 1 ▶ **Contacts** ▶ **Options** ▶ **Advanced**
▶ **Copy to SIM**.
- 2 Select **Copy all** or **Copy a number**.

To copy names and numbers to phone contacts

- 1 ▶ **Contacts** ▶ **Options** ▶ **Advanced**
▶ **Copy from SIM**.
- 2 Select **Copy all** or **Copy a number**.





To automatically save names and phone numbers to the SIM card

- 1 ▶ **Contacts** ▶ **Options** ▶ **Advanced**
▶ **Auto save on SIM**.
- 2 Select **On**.

Call list

The numbers of the most recent calls are saved in the call list. Dialed, answered and missed calls are listed under separate tabs.

To call a number from the call list

- 1 ▶ Calls from standby and select a tab.
- 2 Use , ,  and  to scroll to the name or number you want to call ▶ Call.

To add a number from the call list to contacts

- 1 ▶ Calls from standby and select a tab.
- 2 Scroll to the number you want to add ▶ More ▶ Save number.
- 3 ▶ New contact to create a new contact, or select an existing contact to add the number to.

To clear the call list

- ▶ Calls and scroll to the tab with all calls ▶ More
▶ Delete all.

Speed dialling

You can save the phone numbers that you want to reach easily in positions 1-9 in your phone.

To speed dial

From standby, enter the position number and ▶ Call.


To set or replace speed dialling numbers

- 1 ▶ Contacts ▶ Options ▶ Speed dial.
- 2 Scroll to the position in the list ▶ Add or ▶ Replace.

Voicemail

If your subscription includes an answering service, callers can leave a voicemail message when you cannot answer a call.

Calling your voicemail service

You can easily call your voicemail service by pressing and holding . If you have not set your voicemail number, you will be asked if you want to enter the number. ▶ Yes to enter the number. You get the number from your network operator.

To enter your voicemail number

▶ Messaging ▶ Settings ▶ Voicemail number.

Voice control

With your phone, you can use your voice to:

- Voice dial — call someone by saying the name.
- Activate voice control by saying a “magic word”.
- Answer or reject calls when using a handsfree kit.



Calling

Voice commands can only be saved in the internal phone memory, not on the SIM card. When recording, make sure that you are in a quiet environment and try to use names that are distinct from each other, **► 28 Tips when recording and using voice commands.**

Before voice dialling

You must first activate the voice dialling function and record your voice commands. Phone numbers must be in your list of contacts before adding voice commands. An icon next to the contact name indicates a voice command is associated with that contact.

To activate voice dialling and record names

- 1 ► Settings ► the General tab ► Voice control ► Voice dialling ► Activate ► Yes ► New voice and select a contact.
- 2 If the contact has more than one number, use  and  to view the numbers. Select the phone number to which you want to add the voice command. Now you are going to record a voice command such as “John mobile” for the phone number you selected.

- 3 Instructions appear. Wait for the tone and say the command that you want to record. The voice command is played back to you.
- 4 If the recording sounds ok ► Yes. If not ► No and repeat step 3.
- 5 To record another voice command for a contact ► New voice ► Add again and repeat steps 2-4 above.

Caller name

You can choose whether you want to hear the recorded contact name when you receive a call from that contact.

To turn the caller name on or off

- Settings ► the General tab ► Voice control ► Play caller name.

Voice dialling

You can voice dial by saying a pre-recorded voice command. Start voice dialling from standby using the phone, a portable handsfree, a Bluetooth headset or by saying your magic word.

To make a call from the phone


- 1 From standby, press and hold one of the volume buttons.
- 2 Wait for the tone and say the name you recorded earlier, for example “John mobile”. The name is played back to you and the call is connected.

To make a call with a handsfree

From standby, press the handsfree button, or the Bluetooth headset button.

The magic word

You can record a magic word and use it as a voice command to allow totally handsfree access to voice dialling. Instead of pressing and holding a volume button to voice dial, you say the magic word and then one of your recorded voice commands. The magic word is especially suitable when using a car handsfree kit.

 Choose a long, unusual word or phrase that can easily be distinguished from ordinary background speech.

To activate and record the magic word

- 1 ▶ **Settings** ▶ the **General** tab ▶ **Voice control** ▶ **Magic word** ▶ **Activate**.
- 2 Instructions appear. ▶ **Continue**. Wait for the tone and say the magic word.

- 3 Instructions appear. ▶ **Continue** and select the environments in which you want your magic word to be activated. You can select several alternatives.

Voice answering

You can answer or reject incoming calls by using your voice, when using a portable or car handsfree kit.



You can only use a MIDI, WAV, EMY or IMY file as a ringtone with voice answering.

To activate voice answering and record voice answer commands

- 1 ▶ **Settings** ▶ the **General** tab ▶ **Voice control** ▶ **Voice answer** ▶ **Activate**.
- 2 Instructions appear. ▶ **Continue**. Wait for the tone and say “Answer”, or another word. If the recording sounds ok ▶ **Yes**. If not ▶ **No** and repeat step 2.
- 3 Say “Busy”, or another word ▶ **Yes**.
- 4 Instructions appear. ▶ **Continue** and select the environments in which you want voice answering to be activated. You can select several alternatives.

Calling

To answer a call using voice commands

When the phone rings, say “Answer” and the call is connected.

To reject a call using voice commands

When the phone rings, say “Busy”. The call is rejected. The caller is diverted to voicemail, if activated, or hears a busy tone.

Editing your voice commands

You can edit all your voice commands saved in **Contacts**. Select the contact you want to edit a voice command for ► **More** ► **Edit contact**. Scroll to the relevant tab and edit your voice command.

To re-record a voice command

- 1 ► **Settings** ► the **General** tab ► **Voice control** ► **Voice dialling** ► **Edit names**.
- 2 Select a voice command ► **More** ► **Replace voice**.
- 3 Wait for the tone and say the command.

Tips when recording and using voice commands

If your phone cannot detect your voice command, one of the following might have happened:

- You spoke too softly — try speaking louder.
- You held the phone too far away — hold it as you do during a call.
- The voice command was too short — it should be around one second long and more than one syllable.
- You spoke too late or too soon — speak immediately after the tone.
- You did not record the voice command when the handsfree was attached — for voice control with a handsfree kit, record when the handsfree is attached.
- You used another intonation — use the same intonation as in the recorded voice command.



Diverting calls

If you cannot answer incoming calls, you can divert them to another number, for example, your answering service.



When the Restrict calls function is activated, some Divert calls options are not available.

You can choose between the following divert options:

- **Divert always** — divert all calls.
- **When busy** — divert calls if you are already on the phone.
- **Not reachable** — divert calls if your phone is turned off or if you are unreachable.
- **No reply** — divert calls that you do not answer within a specified time limit.

To activate a call divert

- 1 ▶ Settings ▶ the Calls tab ▶ Divert calls.
- 2 Select a call type and then one of the divert options ▶ Activate.
- 3 Enter the phone number to which you want your calls to be diverted, or press **Look up** to find the contact ▶ OK.

To deactivate a call divert

Scroll to the divert option ▶ Deactivate.

To check all divert options

- ▶ Settings ▶ the Calls tab ▶ Divert always
- ▶ Check all.

More than one call

You can handle more than one call simultaneously.

Call waiting service

When the service is activated, you hear a beep if you receive a second call.

To activate or deactivate the call waiting service

- ▶ Settings ▶ the Calls tab ▶ Manage calls
- ▶ Call waiting.

To make a second call

- 1 ▶ More ▶ Hold call to put the ongoing call on hold.
- 2 Enter the number you want to call
▶ More ▶ Call.

Receiving a second voice call




When you receive a second call, you can do the following:

- ▶ **Answer** and put the ongoing call on hold.
- ▶ **Busy** to reject the second call and continue the ongoing call.
- ▶ **Replace active call** to answer the second call and end the ongoing call.

Calling

Handling two voice calls

When you have one ongoing call and one call on hold, you can do the following:

- Press  ► **Switch calls** to switch between the two calls.
- Press  ► **Join calls** to join the two calls into a conference call.
- Press  ► **Transfer call**, to connect the two calls. You are disconnected from both calls.
- ► **End call** to end the ongoing call, then press **Yes** to retrieve the held call.
- ► **End call** twice to end both calls (operator dependent).
- You cannot answer a third call without ending one of the first two calls or joining them into a conference call.

Conference calls

In a conference call, you can have a joint conversation with up to five other people. You can also put a conference call on hold and make another call.






There may be additional charges for calls involving multiple parties, contact your network operator for more information.


To join the two calls into a conference call

Press  ► **Join calls**.


To add a new participant

- 1 Press  ► **Hold call** to put the joined calls on hold.
- 2 Press  ► **Add call** and call the next person you want to include in the conference call.
- 3 Press  ► **Join calls**.
- 4 Repeat steps 1-3 to include more participants.

To release a participant

Press  ► **Release part** and select the participant that you want to release from the conference call.

To have a private conversation

- 1 Press  ► **Talk to** and select the participant that you want to talk to.
- 2 ► **Join calls** to resume the conference call.



Two voice lines

If you have a subscription that supports an alternate line service, your phone may have two voice lines with different phone numbers.

To select a line for outgoing calls

► Settings ► the Calls tab and select line 1 or 2.

To change the name of a line

► Settings ► the Display tab ► Edit line names and select one of the lines to edit the name.

My numbers

View, add and edit your own phone numbers.

To check your phone numbers

► Contacts ► Options ► Special numbers
► My numbers and select one of the options.

Accept calls

With the accept calls service, you can choose to receive calls only from certain phone numbers. Other calls are automatically rejected by a busy tone. If the call divert option **When busy** is activated, calls are diverted instead of rejected by a busy tone. The phone numbers of calls you have rejected are saved in the call list.

To add numbers to the accepted callers list

- Settings ► the Calls tab ► Manage calls ► Accept calls ► Only from list ► Edit ► Add. Select a contact.
- To add a group of contacts to the accepted callers list ► **Groups** (requires that you have created groups, ➔ 33 *Groups*).

To accept all calls

► Settings ► the Calls tab ► Manage calls
► Accept calls ► All callers.

**Restricted dialling**

You can use the restrict calls service to restrict outgoing and incoming calls. You need a password which you get from your service provider.



If you divert incoming calls, you cannot activate some Restrict calls options.

The following calls can be restricted:

- **All outgoing** — All outgoing calls.
- **Outgoing intl** — All outgoing international calls.
- **Outgoing intl roam.** — All outgoing international calls except to your home country.
- **All incoming** — All incoming calls.
- **Inc. when roaming** — All incoming calls when you are abroad (when roaming).

Calling

To activate or deactivate a call restriction

- ▶ Settings ▶ the Calls tab ▶ Manage calls ▶ Restrict calls and select an option.
- Select **Activate** or **Deactivate**, enter your password ▶ **OK**.



Fixed dialling

The fixed dialling function allows calls to be made only to certain numbers saved on the SIM card. The fixed numbers are protected by your PIN2.



You can still call the international emergency numbers even when the fixed dialling function is activated.

Partial numbers can be saved. For example, saving 0123456 allows calls to be made to all numbers starting with 0123456.



When fixed dialling is activated, you cannot view or manage any phone numbers that are saved on the SIM card.

To activate or deactivate fixed dialling

- ▶ Contacts ▶ Options ▶ Special numbers ▶ Fixed dialling and select **Activate** or **Deactivate**.
- Enter your PIN2 ▶ **OK** and then ▶ **OK** again to confirm.

To save a fixed number

- ▶ Contacts ▶ Options ▶ Special numbers
- ▶ Fixed dialling ▶ Fixed numbers ▶ New number and enter the information.



Call time and cost

During a call, the duration of the call is shown on the screen. You can check the duration of your last call, outgoing calls and the total time.

To check the call time

- ▶ Settings ▶ the Calls tab ▶ Time & cost
- ▶ Call timers.

Additional calling functions

Tone signals

You can use telephone banking services or control an answering machine by sending tone signals during a call.

- To send the tones, press the keys **[0+]** — **[9]**, **[*a/A]** or **#[←→]**.
- To clear the screen after the call is finished, press **[C]**.
- To turn the tones on or off during the call, press **[⊙]** and select **Disable tones** or **Enable tones**.

Notepad

You can use the phone to make a note of a phone number during a call. When you press the number keys, the person you are talking to hears tone signals. When you end the call, the number remains on the screen. ▶ **Call** to call the number. ▶ **More** ▶ **Save number** and select a contact to save the number. If you want to create a new contact and save the number ▶ **New contact**.

Showing or hiding your number

If your subscription supports the Calling Line Identification Restriction (CLIR) service, you can hide your phone number when making a call.

To always show or hide your phone number

- ▶ **Settings** ▶ the **Calls** tab ▶ **Show or hide no.**
- Select **Show number**, **Hide number** or **Network default**.

Groups

You can create a group of numbers and email addresses. By doing so, you can send messages to several recipients at the same time,

- ➡ *34 Messaging*. You can also use groups (with numbers) when you create accepted callers lists,
- ➡ *31 Accept calls*.

To create a group of numbers and email addresses

- ▶ **Contacts** ▶ **Options** ▶ **Groups**
▶ **New group** ▶ **Add**.
- Enter a name for the group ▶ **Continue**.
- ▶ **New** ▶ **Add** to find and select a contact number.
- Repeat step 3 to add more numbers. ▶ **Done**.

Business cards

You can add your own business card as a contact.

To add your own business card

- ▶ **Contacts** ▶ **Options** ▶ **My business card** and add information for your business card ▶ **Save**.

To send your business card

- ▶ **Contacts** ▶ **Options** ▶ **My business card**
- ▶ **Send my card** and select a transfer method.

Messaging

Text messaging, picture messaging, voice messaging, email, My friends.



Your phone supports various messaging services. Please contact your service provider about the services you can use or for more information, visit www.SonyEricsson.com/support.

Text messaging (SMS)

Text messages can contain simple pictures, animations, melodies and sound effects.



If you send a text message to a group, you are charged for each member of that group. Check with your service plan or service provider for details.

Before you start

First make sure that the number of your service centre is set. The number is supplied by your service provider and is usually saved on the SIM card.

To set the service centre number

- 1 ▶ **Messaging** ▶ **Settings** ▶ **Text message** ▶ **Service centre**. If the service centre number is saved on the SIM card, it is shown in the list.

- 2 If there is no number in the list ▶ **Add** and enter the number, including the international “+” sign and country code ▶ **Save**.


Sending text messages

For information about entering letters, ▶ **13 Entering letters**.



Some language-specific characters use more space. For some languages you can deactivate National chars. to save space.

To write and send a text message

- 1 ▶ **Messaging** ▶ **Write new** ▶ **Text message**.
- 2 Write your message ▶ **Continue**. If you want to save the message for later, press . ▶ **Yes** to save it in **Drafts**.
- 3 ▶ **Enter phone no.** and enter the recipient's phone number, or ▶ **Contacts look-up** to retrieve a number or a group from **Contacts**. To enter an email address ▶ **Enter email addr**. A list below the send options shows the last used recipients. You can also select a recipient from this list. ▶ **Send**.



*To send a message to an email address, you need to set an email gateway number; ▶ **Messaging** ▶ **Settings** ▶ **Text message** ▶ **Email gateway**. The number is supplied by your service provider.*

To insert an item in a text message

- 1 While writing your message ► **More**
► **Add item**.
- 2 Select an item type and then select an item.

Receiving text messages

► **View** or ► **Yes** to read the text message. If you do not want to read the message now, press ► **No** (if available).

When you have read the text message ► **More** to view a list of options. Press (↩) to close the text message.

To call a number in a text message

Select the phone number ► **Call**.

Saving and deleting text messages

Text messages are saved in the phone memory. When the phone memory is full, you must delete messages or move them to the SIM card to be able to receive new messages. Messages that you have saved on the SIM card remain there until you delete them.

To save a message to the SIM card

- **Messaging** ► **Inbox** ► **More** ► **Save message**
- **Saved messages**.

To save an item from a text message

- 1 Select the phone number, Web address, picture or sound that you want to save in the message
► **More**.
- 2 If you have selected to save a phone number
► **Use** ► **Save number**. If you have selected a Web address ► **Save bookmark**, a picture
► **Save picture**, a melody ► **Save sound**.

To save or delete several messages

- 1 ► **Messaging** and select a folder.
- 2 Select a message ► **More** ► **Mark several**.
- 3 Scroll and select more messages by pressing **Mark** or **Unmark**.
- 4 ► **More** ► **Save messages** or ► **More**
► **Delete messages** or ► **Delete all msgs**.

To delete a message

- 1 ► **Messaging** and select a folder.
- 2 Select the message that you want to delete and press (C).

Messaging

Long messages

The number of characters that a text message can contain depends on the language you are writing in. You can send a longer message by linking two or more messages. You are charged for each of the messages linked in a long message. You may not receive all parts of a long message at the same time.



Check with your service provider for the maximum number of messages that can be linked.

To turn long messages on or off

- ▶ Messaging ▶ Settings ▶ Text message
- ▶ Max. msg length ▶ Max. available.

Templates

If you have messages that you send often, you can save these as templates. You can create your own templates.

To create a template

- 1 ▶ Messaging ▶ Templates ▶ New template
▶ Add ▶ Text.
- 2 Write the message ▶ OK.
- 3 Enter a title for the message ▶ OK.

Message options

You can set a default value for several message options or choose the settings each time you send a message.

To set a default text message option

▶ Messaging ▶ Settings ▶ Text message and select an option.

To set a message option for a specific message

- 1 When you have selected a recipient to send your text message to ▶ More ▶ Advanced.
- 2 Select the option that you want to change
▶ Edit and select a new setting.
- 3 ▶ Done when you have changed the options.

To check the delivery status of a sent message

▶ Messaging ▶ Sent messages and select a text message ▶ View ▶ More ▶ Details.

Picture messages (MMS)

Picture messages can contain text, pictures, video clips, camera pictures, sound recordings and business cards. You must have a subscription that supports picture messaging, and the receiver of the picture message must also have support for picture messaging. You can send picture messages to a mobile phone or an email address.

Before you start

Before sending a picture message, make sure that:

- 1 The address of your message server is set
 ► **Messaging** ► **Settings** ► **Picture message**
 ► **Message server**.
- 2 You have entered the correct settings
 ► **Messaging** ► **Settings** ► **Picture message**
 ► **Internet profile**. If no Internet profile exists
 ► **New profile** and enter the required settings.
 You can also automatically receive all the settings in a message from your network operator or from
www.SonyEricsson.com/support.

Creating and sending picture messages

When composing a picture message, you can select different items such as: **Picture**, **Text**, **Sound**, **Video**, **Sound recording** and **Signature**. You can also select **Use camera** to take a new picture or record a new video clip.

Before sending a picture message, you can select from different options to adjust and enhance your message.

To create and send a picture message

- 1 ► **Messaging** ► **Write new** ► **Picture msg** ► **Add** to view a list of items to add to your message. Select an item.
- 2 ► **Add** to add more items to the message. You can view and select options to enhance the message by highlighting items in the message and pressing the left selection key.
- 3 When you have finished composing your message ► **More** ► **Send**.
- 4 ► **Enter phone no.** and enter the recipient's phone number, or ► **Contacts look-up** to retrieve a number or a group from Contacts. To enter an email address ► **Enter email addr.** A list below shows the last 10 recipients. You can also select a recipient from this list.
 ► **Send**.

Messaging

To make a call while creating a picture message

- 1 While writing your message ► **More**.
- 2 ► **Make a call** and enter or retrieve a phone number ► **Call**. You return to the message.
- 3 To end the call ► **More** ► **End call**.

To set a default message option

► **Messaging** ► **Settings** ► **Picture message** and select one of the options.

Additional send options


You can request a read report, a delivery report and set a priority for a specific message. You can also add more recipients to the message.

To select additional send options

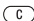
- 1 When you have entered the recipient's phone number ► **More**.
- 2 Select **Add recipient** or **Edit recipients** to add more recipients, **Add attachment**, or **Advanced** to select additional send options.

Receiving picture messages

When you receive an automatically downloaded picture message, a message alert sounds.

► **View** or ► **Yes** to read or play the message. ► **Stop** to stop the message. When you have read the message, select **Reply** to reply immediately or select **More** to view a list of options. Press  to close the message.



You can select a message from the list of messages and press  to delete the entire message.

To save items from a picture message

When you have viewed a picture message ► **More** ► **Save items** and select an item from the list that appears.

Delete picture messages

Picture messages are saved in the phone memory. When the phone memory is full, you must delete messages to be able to receive new messages, ► **35 Saving and deleting text messages**.

Templates

You can base your message on one of the templates. You can also add new templates.

To use a template for a picture message

- 1 ▶ **Messaging** ▶ **Templates** and select a template.
- 2 ▶ **Use** ▶ **Add** to add new items.
- 3 ▶ **More** ▶ **Send** to send the message.

Automatic download

You can select how you want your picture messages to be downloaded.

- ▶ **Messaging** ▶ **Settings** ▶ **Picture message**
- ▶ **Auto download** to view the following:
 - **Always** — your phone automatically downloads messages to your phone as soon as they come to your network operator's server. This is default.
 - **Ask in roaming** — you will be asked if you want to download messages sent from a network other than your home network.
 - **Not in roaming** — the messages are never downloaded when they are sent from a network other than your home network.
 - **Always ask** — you will always be asked if you want to download messages, regardless of network used.
 - **Off** — new messages appear in the inbox as icons. Select the message ▶ **View** to download.

Voice messages

Voice messages offer a quick way to send and receive sound recordings as messages. A voice message can only contain one sound recording. To send voice messages must have a subscription that supports picture messaging, and the receiver of the voice message must also have support for picture messaging.

To record and send a voice message


- 1 ▶ **Messaging** ▶ **Write new** ▶ **Voice message**.
The sound recorder starts.
- 2 Record your message. ▶ **Stop** to end the recording.
- 3 ▶ **Send** to send the message.
- 4 ▶ **Enter phone no.** and enter the phone number of the recipient, or ▶ **Contacts look-up** to retrieve a number or a group from Contacts. To enter an email address ▶ **Enter email addr.** A list below the send options shows the last 10 recipients. You can also select a recipient from this list. ▶ **Send.**

Messaging

Receiving voice messages

When you receive a voice message, a message alert sounds and you are asked if you want to play the message.

Select **Play** or **Yes** to listen to the voice message. If you do not want to listen to the message at once, select **No** (if available).

When you have listened to the voice message ▶ **More** to view a list of options. Press  to close the message.

Email

You can use your phone to send and receive email messages. You can use the same email settings in your phone as in your computer email program. For more information, contact your network or service provider.

Before you start

First make sure that:

- Settings are in your phone, if not, ➡ *56 Settings*.
- You have set up and selected an email account. To download the email account settings visit www.SonyEricsson.com/support. Have your email account details at hand.

Default email account

If you have both an office and a home email account, you can set one of them as default:

▶ **Messaging** ▶ **Email** ▶ **Settings** ▶ **Account settings** and select an account.

To write and send an email message

- 1 ▶ **Messaging** ▶ **Email** ▶ **Write new**.
- 2 Write the subject for your message ▶ **Continue** and then write the text ▶ **Continue**.
- 3 ▶ **Enter email addr.** to enter an email address or ▶ **Contacts look-up** to retrieve an address from Contacts.
- 4 Select **Send** to send your email message or select **More** to view a list of options for your message.

To send, receive and read email messages

- 1 ▶ **Messaging** ▶ **Email** ▶ **Inbox** ▶ **Send&rec** (when inbox is empty) or ▶ **Messaging** ▶ **Email** ▶ **Inbox** ▶ **More** ▶ **Send & receive** to send or download new messages.
- 2 Select a message ▶ **View** to read it.

To reply to an email message

- 1 Open the email message ► **Reply**.
- 2 ► **Include message** to include the original message in your reply or ► **Write new** to exclude the original message. Write your message. ► **More** to view options for the message ► **Continue**.
- 3 ► **Send** to send the message or ► **More** to view a list of options for your message.

To save an email address or a phone number in an email message

- 1 Select the email address or phone number that you want to save ► **More**.
- 2 To save an email address ► **Save address**.
To save a phone number ► **Use** ► **Save number**.

To save an email message

- 1 Open the email message ► **More** ► **Save message** ► **Saved email**.
- 2 The message is saved in **Saved email** in the **Email** menu.



The number of email messages that can be saved depends on how much memory there is left in the phone. All email messages are also saved on your email server, and you can view both older and newer messages on the server.

To save several email messages

- 1 ► **Messaging** ► **Email** ► **Inbox**.
- 2 Select a message ► **More** ► **Mark several**.
- 3 Scroll and select more messages by pressing **Mark** or **Unmark**.
- 4 ► **More** ► **Save messages**.

To delete an email message (POP3 users)

- 1 ► **Messaging** ► **Email** ► **Inbox** and select the message ► **More**.
- 2 ► **Mark for deletion**. The message is deleted the next time you connect to your email server. If you want to delete several messages ► **Mark several**. Scroll and select more messages by pressing **Mark** or **Unmark**. ► **More** ► **Mark for deletion**.

To delete an email message (IMAP4 users)

- 1 ► **Messaging** ► **Email** ► **Inbox** and select the message ► **More**.
- 2 ► **Mark for deletion**. The message is marked for deletion on the server. If you want to delete several messages ► **Mark several**. Scroll and

Messaging

select more messages by pressing **Mark** or **Unmark**. ▶ **More** ▶ **Mark** for deletion.

- ▶ **More** ▶ **Clear inbox**. and press **With send & rec.** or **No send & rec.** to delete messages.



My friends

Connect and log in to the My friends server to communicate online with your favourite contacts. If your subscription supports instant messaging services, you can see contact status if they are online, and send and receive instant messages. For more information, contact your service provider or see www.SonyEricsson.com/support.

To log in to your My friends server

- ▶ **Messaging** ▶ **My friends** ▶ **Myself** ▶ **Log in**.

List of contacts

You can create a list of contacts from your My friends server, people you want to send messages to on a regular basis.

To add a contact

- ▶ **Messaging** ▶ **My friends** ▶ **More** ▶ **Add contact** and select an option.

To send an instant message from My friends

- ▶ **Messaging** ▶ **My friends** and select a contact.
- ▶ **Send IM** and type your message ▶ **Send**.

Status

You can change your status shown to others. You can also choose to display it for your contacts only or for all users on the My friends server.

To change your own status

- ▶ **Messaging** ▶ **My friends** ▶ **Myself** ▶ **Change**.

Chatroom

A chatroom can be started by your service provider, by an individual My friends user or by yourself. You can save chatrooms either by saving a chat invitation or by searching for a specific chatroom.

To start a chatroom

- ▶ **Messaging** ▶ **My friends** ▶ **More** ▶ **Start chatroom**.
- Select contacts to invite to the chatroom from your list of contacts ▶ **Continue**.
- Enter a short invitation text ▶ **Continue** ▶ **Send**.

Area information

Area information is a type of text message that is sent to all subscribers within a certain network area. When you receive an area information message, the message automatically appears on the screen. Press **Save** to save the message in your inbox, or **Discard** to delete the message.



Please consult your service provider for more information about area information.

To turn area information on or off

► Messaging ► Settings ► Area info ► Reception.

Cell information

The cell information channel is used by some network operators to send messages about a certain network area to their subscribers within that area.

To turn on cell information

► Messaging ► Settings ► Area info
► Cell information.

Imaging

Camera, video recorder, pictures, PhotoDJ™.

Camera and video recorder

Your phone has a digital camera which also works as a digital video recorder. You can take pictures, record video clips, save and view them and send them as email attachments or in picture messages via picture messaging.

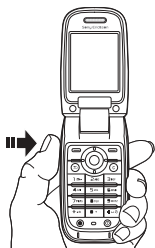
Before you start



The receiving phone needs to support data transmission and picture messaging in order to receive and show the picture or video clip.


- Before you send a picture or video clip using picture messaging make sure that you have set the address of your message server for picture messaging, ➤ *37 Picture messages (MMS)* and that Internet settings are entered in your phone, ➤ *56 Settings*.
- Before you send a picture or video clip using email make sure that you have entered settings for a data account and for an email account in your phone, ➤ *40 Email*.

Imaging

To take pictures and video clips



- 1 Press and hold  to start the camera.
- 2 Press  again to take the picture or start the video.
- 3 To end video recording, press again.

 *If you try to record a strong light source such as direct sunlight or a lamp, the screen may black out or the picture may be distorted.*

To switch between video and photo

Press  or .

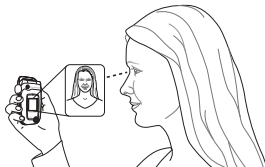
To use the zoom



Use the volume buttons on the side of the phone to zoom in and zoom out.


To adjust brightness

Use the navigation key to increase or decrease brightness.

To take a self-portrait



- 1 Close the phone and hold it with the external display and the camera turned towards you.
- 2 Press and hold  to start the camera.
- 3 Press  again to take the picture.

 *Make sure that you have selected the camera, and not the video recorder.*

Camera and video options

When the camera or video is activated ► **More** to view more options. Options before you take a picture:

- **View all clips** (video).
- **Video size** — choose between **Large 176x144** and **Small 128x96**.
- **Night mode** — enhance picture quality in poor lighting conditions with longer exposure time.
- **Effects** — select different effects for your picture or video.
- **Recording time** — **For picture msg** or **Unlimited**.
- **View all pictures** (camera).
- **Picture size** — choose between 1280x960, 640x480, 320x240 and 160x120.
- **Shoot mode** (camera) — select from **Normal** for no frame, **Panorama** to combine several pictures into one wide picture, **Frames** to add a frame to your picture and **Burst** to take four pictures in rapid succession.
- **Picture quality** — choose between **Normal** and **Fine** picture quality.
- **Self-timer** — the picture is taken a few seconds after you press the camera button.

Saving pictures and video clips

When you have taken a picture or recorded a video clip, the phone automatically saves it to a subfolder in **File manager**.

Sending pictures and video clips

When you have taken a picture or recorded a video clip, you can send it as a picture message if the file size has not exceeded the limit. To exchange pictures and video clips using other transfer methods

► *47 Exchanging pictures.*

To send a picture

When you have taken a picture ► **Send** to send the picture.

To send and play video clips

When you have finished your recording, ► **Send** to send the video clip. ► **More** ► **Play** to play or press **(C)** to delete the video clip.

Pictures

Your phone comes with a number of pictures and animations. You can delete these pictures if you want to free memory. All pictures are saved in **File manager** ► **Pictures**. You can:

- Use a picture as wallpaper (screen and external display) and as a screen saver.
- Assign a picture to a contact. ➔ *22 To add a picture, light effect or a ringtone to a phone contact.*
- Exchange pictures using one of the available transfer methods.

Handling pictures

You can add, edit or delete pictures in **File manager**. The number of pictures that you can save depends on the size of the pictures. File types supported are GIF, JPEG, PNG, SVG, WBMP and BMP.

To view your pictures

- 1 ► **File manager** ► **Pictures**.
- 2 The pictures are shown in thumbnail view. To get a full view ► **View**.

To display pictures in a slide show

- 1 ► **File manager** ► **Pictures** and scroll to a picture.
- 2 ► **View** ► **More** ► **Slide show**.

To view information about a picture or video clip

- 1 ► **File manager** ► **Pictures** or **Videos**, select the picture or video clip.
- 2 ► **More** and select **Information**.





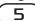
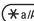

Using pictures

You can use a picture for several purposes, for example, add it to a contact, use it in the start-up screen, or use it as a screen saver. The screen saver is activated automatically when the phone has been in idle mode for a few seconds. After a few more seconds, the screen saver changes to sleep mode, to save power. Press any key on the keypad and the screen turns on again. If you have a picture as wallpaper, this picture is shown in standby mode. You can select wallpaper both for the screen and for the external display.

To use a picture

- 1 ► **File manager** ► **Pictures** and scroll to the picture you want to use ► **More** ► **Use as**.
- 2 Select what you want to use the picture for.

PhotoDJ™

When editing pictures press , , ,  and the following keys:  to activate the tool,  to select the tool and  to select a colour.

To edit and save a picture

- 1 ▶ **File manager** ▶ **Pictures** and scroll to the picture you want ▶ **View**.
- 2 ▶ **More** ▶ **Edit**. Some pictures you have taken with the camera can be edited.
- 3 After editing, ▶ **More** ▶ **Save picture** to save the picture.

Exchanging pictures

You can exchange pictures using one of the available transfer methods. Please note that you are not allowed to exchange copyright-protected material. For more information on sending pictures in messages
 ➔ *34 Messaging*.

To send a picture

▶ **File manager** ▶ **Pictures** and scroll to the picture you want. ▶ **More** ▶ **Send** and select a transfer method.

To receive and save a picture

- 1 Open the message you received the picture in, or turn on Bluetooth or the infrared port if one of these transfer methods was used to send the picture.
- 2 If you received the picture in a message, select the picture and save it. If you received the picture via Bluetooth or infrared, follow the instructions that appear on the screen.

Entertainment

Media player, PlayNow™, ringtones, MusicDJ™, VideoDJ™, sound recorder, themes, games.

Media player

The media player works as a music player and video player all in one. You can play music and video clips that you receive in a picture message, or that you download to your phone. The following file types are supported by the media player: MP3, MIDI, SP-MIDI, AAC, AMR and WAV (with 16 kHz as maximum sample rate). You can also stream music and videos from Web sites. When streaming, links have to be 3GPP compatible.

Playlists

To organize the media files that are stored in the **File manager** you can create playlists. Files in a playlist can be sorted by artist, title or by the order in which the files were added to the playlist. You can add a file to more than one playlist.

The playlists **All music** and **All videos** are automatically generated and contain all music and video files that are saved in the phone memory. You cannot delete or rename these playlists.



When you delete a playlist or a file from the playlist, it is not deleted permanently from the phone memory. You can add the file to another playlist.

To create a playlist

- 1 ▶ **Media player** ▶ **New playlist** enter the name of the playlist ▶ **OK**.
- 2 Select among the files that are available in the **File manager**. You can add several files at a time and you also add folders. All files in the selected folders will be added to the playlist.

To add files to a playlist

- 1 ▶ **Media player** select a playlist ▶ **Open** ▶ **More** ▶ **Add media**.
- 2 Select among the files that are available in the **File manager**.

To remove files from a playlist

▶ **Media player** select a playlist ▶ **Open**.
Select the file ▶ **More** ▶ **Delete**.

To delete playlists

▶ **Media player** select a playlist ▶ **More**
▶ **Delete playlist**.

Music and video clips

To play music and videos

► **Media player** and select a playlist ► **Open** ► **Play**. The playlist keeps on playing until you ► **Pause** or **Stop**.




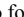
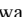

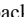
To change play mode

► **Media player** ► **More** ► **Play mode**. Select **Shuffle on** to play the playlist files in random order, or **Loop on** to restart the playlist when the last file has been played.



You can also change the play mode from within the playlists.

Media player control

- ► **Pause** to pause the playback.
- Press  or  to go forward or back to the next music track or video clip.
- Press and hold  or  to fast forward or rewind.
- Press  and  to scroll through the playlist during playback. Files that are highlighted will not be selected until you press ► **Stop** ► **Play**.
- When a video clip is paused, press  to play the video clip one frame at a time.

Media player options

- **More** to view the following options:
 - **Play mode** — change the playback order of songs and videos. Select **Loop** or **Shuffle**.
 - **Equalizer** — change the settings of the treble and bass when playing music.
 - **Rename** — rename the playlist. You can only rename user-created playlists.
 - **Delete playlist** — delete the playlist. Only the playlist is deleted; the files are still listed in the **File manager**. You can only delete user-created playlists.

Media options

When you have opened a playlist, ► **More** to view the following options:

- **Information** — view information about the current track or video.
- **Add media** — add files or folders to the playlist.
- **Minimize** — minimize the media player and return to standby. The music continues to play and you can use other applications and functions in the phone.
- **Play mode** — change the playback order of songs and videos.
- **Equalizer** — change the settings of the treble and bass when playing music.

Entertainment

- **Sort** — sort the playlist by artist, title or by the order in which files were added to the playlist.
- **Send** — send a sound or video file.
- **Delete** — remove the file from the playlist.
- **Capture frame** — capture a picture from the video clip.

Online music and videos

You can view videos and listen to music that you find on a Web site by streaming them to your phone. When browsing and when you have found a link for streaming, the media player will open automatically when the link is selected.

In order to stream you must have a data account. Your phone may be pre-configured with a data account. If it is not, please contact your network operator or visit www.SonyEricsson.com/support
➡ 56 Settings.

To select a data account

- 1 ▶ Settings ▶ Connectivity tab
▶ Streaming settings.
- 2 Select the data account you want to use.

To stream video and audio

- 1 ▶ File manager ▶ Videos ▶ More videos.
- 2 Follow the instructions to stream.

To stream saved music and videos

- 1 ▶ Internet services ▶ More ▶ Bookmarks.
- 2 Select a link to stream. The media player will open and play the streamed music or video.

PlayNow™



This function is network- or operator-dependent. Please contact your network operator for information about your subscription and PlayNow™. In some countries you may be able to purchase music tones from some of the world's top musical artists.

With the PlayNow™ service, you can listen to music tones before you decide to purchase and download them to your phone. Each music tone is part of an original song and is optimized for your Sony Ericsson mobile phone.

Before you start

First make sure that:

- You have a phone subscription that supports GPRS data transmission.
- You have entered the correct settings in your phone, ➡ 56 Settings.
- You may also have to register as a WAP user with your service provider or network operator.
- You have free memory in your phone.

Accessing the PlayNow™ music tone list

By selecting the PlayNow™ icon, you download the PlayNow™ music tone list to your phone. You can now listen to a music tone in the list.

To listen to a music tone

► PlayNow™ and select a music tone that you want to listen to.


Downloading a music tone from the PlayNow™ list

The total price for the download is the price appearing on the screen when you select to download and save a music tone. Your phone bill or prepay phone card will be charged by your network operator after you have purchased the tone.

To download a music tone


1 When you have listened to a music tone that you want to download, first verify the purchase details above, then read the terms and conditions provided in the phone kit. By agreeing to purchase in the phone, you also agree to accept these conditions.

2 ► Yes to download the music tone. You will receive a text message that confirms that the music tone is paid for and made available. The music tone is automatically saved in **File manager** ► **Sounds**.

 *The service may not always be available in all countries or when you are using a network other than your network operator's — a message will appear to inform you about this when selecting the PlayNow™ icon.*

Ringtones and melodies

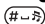
Your phone comes with a number of standard and polyphonic melodies that can be used as ringtones. You can exchange melodies using one of the available transfer methods. Please note that you are not allowed to exchange copyright-protected material.

 *If you select an MP3 file as a ringtone, you cannot use voice answering, ► 27 Voice answering.*

To select a ringtone



► **Settings** ► the **Sounds & alerts** tab ► **Ringtone**.

To turn the ringtone on or off

Press and hold  from standby. All signals except the alarm signal are turned on or off.

Entertainment

To set the ringtone volume

- ▶ Settings ▶ the Sounds & alerts tab
▶ Ring volume and press  or 
to decrease or increase the volume.
- ▶ Save to save the setting.

Caller-specific ringtones

If your subscription includes the Calling Line Identification (CLI) service, you can assign a personal ringtone to callers, ➤ 22 *To add a picture, light effect or a ringtone to a phone contact.*

Vibrating alert

You can choose to be notified of an incoming call by the buzzing of the vibrating alert. You can set:

- **On** — all the time.
- **On if in Silent** — on when the ring volume is turned off or when you have set the phone to silent.
- **Off** — all the time.

To set the vibrating alert

- ▶ Settings ▶ the Sounds & alerts tab
- ▶ Vibrating alert and select the setting you want.

Sounds and alerts options





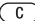
From Settings ▶ the Sounds & alerts tab, you can set:

- **Message alert** — select how you want to be notified of an incoming message.
- **Key sound** — select what sound you want the keys to make when you press them.
- **Light effects** — select which light effects to use.

MusicDJ™

You can compose and edit melodies to use as ringtones using the MusicDJ™. A melody consists of four types of tracks — **Drums**, **Basses**, **Chords** and **Accents**. A track contains a number of music blocks. The blocks consist of pre-arranged sounds with different characteristics. The blocks are grouped into **Intro**, **Verse**, **Chorus** and **Break**. You compose a melody by adding music blocks to the tracks.

To compose a melody


- ▶ Entertainment ▶ MusicDJ™.
- Choose to **Insert**, **Copy** and **Paste** blocks to compose your melody. Use , ,  or  to move between the blocks. Press  to delete a block. ▶ **More** to view more options.

To edit a previously created melody

- ▶ File manager ▶ Sounds and select the melody
- ▶ More ▶ Edit.

Sending and receiving

You can send and receive melodies using one of the available transfer methods. Please note that you are not allowed to exchange copyright-protected material.

 *You cannot send a polyphonic melody or an MP3 file in a text message.*

To send a melody

- 1 ▶ File manager ▶ Sounds and select a melody.
- 2 ▶ More ▶ Send and select a transfer method.

To receive a melody

- 1 Open the message you received the melody in, or turn on Bluetooth or the infrared port if these transfer methods are being used to send the melody.
- 2 When you receive the melody, follow the instructions that appear on the screen.

VideoDJ™

With the VideoDJ™, you can create movies by combining video clips and pictures that you have saved in your phone. You can also use VideoDJ™ to trim video clips and edit video items.

To create a movie

- 1 ▶ Entertainment ▶ VideoDJ™.
- 2 ▶ Add. Select to add a Video clip, a Picture or Text ▶ Select.

To edit a video clip

- 1 ▶ File manager ▶ Videos ▶ Open and choose the video clip you want to open.
- 2 ▶ More ▶ Edit ▶ Edit to Trim, Replace or Delete a clip from the current movie.

To edit a picture

- 1 ▶ Entertainment ▶ VideoDJ™.
- 2 ▶ Add ▶ Picture. Choose the picture you want to edit and ▶ Select.
- 3 ▶ Edit ▶ Replace to replace a picture, ▶ Duration to change the picture duration in the movie or ▶ Delete to delete the picture from the current movie.

Entertainment

To edit text

► **Edit** to change a text string, ► **Background** to change the text background, ► **Text colour** to change the font colour, ► **Duration** to change the duration of the text in the movie or ► **Delete** to delete the text from the current movie.

VideoDJ™ options

When a movie is selected, ► **More** to view more options:

- **Preview** — to view the movie.
- **Insert** — to insert an item.
- **Save** — to save the current movie.
- **Send** — to send the current movie.
- **New** — to open another movie.
- **Soundtrack** — to add a soundtrack to the current movie.

Sending and receiving movies

You can send a movie using one of the available transfer methods. Short movies can be sent using picture messaging. If a movie is too long, you can use the **Trim** function to make a movie shorter.

Movies that you receive and save are saved in the file manager.

To trim a video clip

- 1 Select a video from the storyboard ► **Edit** ► **Trim**.
- 2 ► **Set** to set the start point and ► **Start**.
- 3 ► **Set** to set the end point and ► **End**.
- 4 You can repeat steps 2 and 3 until you are satisfied. ► **Done** to finish the trim.

Sound recorder

With the sound recorder, you can record either your own memos or calls. If your network operator or service provider supports it, recorded sounds can also be set as ringtones. Recording of a conversation is stopped if a participant ends the call. Recording of all sounds stops automatically if you receive a call. If the recordings are saved in the phone, they can be accessed even if you change your SIM card.



In some countries or states it is required by law that you inform the other person before recording the call.

To start a sound recording

- 1 ► **Entertainment** ► **Record sound**.
- 2 Wait until you hear a tone. When the recording starts, **Recording** is displayed together with the time of the current recording (increasing).

- 3** ▶ **Save** to end the recording, and ▶ **Play** to listen to the recording. ▶ **More** to view the following options: **Record new**, **Send**, **Rename**, **Delete**, **Recorded sounds**.

To listen to your recordings

- 1** ▶ **File manager** ▶ **Sounds** and select the recording you want to hear.
- 2** ▶ **Play** to listen to the recording and ▶ **Stop** to stop playback.

Themes

You can change the appearance of the screen, for example, the colours and wallpaper, by using themes. Your phone comes with some predefined themes. You cannot delete these, but you can create new themes and download them to your phone. For more information, visit www.SonyEricsson.com/support.

To select or change a theme

- ▶ **File manager** ▶ **Themes** and select a theme.

Exchanging themes

You can exchange themes using one of the available transfer methods.

To send a theme

- 1** ▶ **File manager** ▶ **Themes** and select a theme.
- 2** ▶ **More** ▶ **Send** and select a transfer method.

To receive and save a theme

- 1** Open the message you received the theme in, or turn on Bluetooth or the infrared port if these transfer methods are being used to send the theme.
- 2** When you receive the item, follow the instructions that appear on the screen.


To download a theme

- ▶ **File manager** ▶ **Themes** ▶ **Sony Ericsson**.

Games

Your phone has several entertaining games. You can also download games and applications directly to the folders in your phone. Help texts are available for most games.

To start and end a game

- 1** ▶ **Entertainment** ▶ **Games** and select a game ▶ **Select**.
- 2** Press and hold  to end the game.

To download a game

- ▶ **Entertainment** ▶ **Games** ▶ **Sony Ericsson**.

Connectivity

Internet and email settings, synchronizing, Bluetooth, infrared, and optional USB cable.

Settings

Before you start using Internet, messaging, My friends or PlayNow™, settings are required in your phone.

Settings may already be entered when you buy your phone. If not, contact your network operator or service provider for more information. Settings are also available at www.SonyEricsson.com/support.

In order to use the Internet, and send and receive picture and email messages, you need the following:

- A phone subscription that supports data transmission.
- Settings entered in your phone.
- You may also have to register as an Internet and email user with your network operator or service provider.

Entering Internet and email settings

If the settings are not already entered in your phone, you can:

- Receive settings from your network operator or service provider. Settings are also available at www.SonyEricsson.com/support.
- Enter or edit settings manually.

Using Internet

Your phone has a browser that uses WAP (Wireless Application Protocol) or HTTP (Hyper Text Transfer Protocol) to access the Internet.

To select an Internet profile

► Settings ► the Connectivity tab ► Internet settings ► Internet profiles and select the profile you want to use.

To start browsing

► Internet services and select a service or ► Internet services ► More and select an option.


To stop browsing

► More ► Exit browser.

Options when browsing

► **More** to view different browsing options.

The options may vary depending on which site you are visiting.

 *If you select an email address when browsing a Web site, you can send a text message to that address.*

The options menu always contains the following:

- **Exit browser** — disconnect and go to standby.
- Go to the homepage set for the current Internet profile, for example, **Sony Ericsson**.
- **Bookmarks** — add the site you are currently browsing to your list of bookmarks, or view the list of bookmarks. Select to stream music or videos.
- **Enter address** — enter the Web page address of a site you want to visit. ► **New address** to enter a new Web page address or select one of the 10 latest entered addresses. When you enter a Web page address, the normal http:// prefix is not needed.
- **Clear cache** — clear all temporary stored Internet files saved in the phone.
- **History** — list of previously visited sites.
- **Refresh page** — refresh the contents of the Web page.

- **Save** — save the Web page or a picture from the current Web page.
- **Send link** — send a link to the current site to another phone.
- **Status** — display current status information, for example, profile, access type, security, address.
- **Appearance** — select to play the sounds or show the pictures on visited pages.
- **Make a call** — if your subscription supports it, you can make a call while browsing the Internet.
 - **More** ► **End call** to end the call and continue browsing.

Using bookmarks

You use bookmarks in your mobile phone just as you do with a computer Internet browser.

You can create and edit bookmarks.

To work with bookmarks

- 1 ► **Internet services** ► **More** ► **Bookmarks** and select a bookmark ► **More**.
- 2 Select an option.

Connectivity

Downloading

You can download, for example, pictures, themes, games and ringtones from Web sites directly to your phone.



Contact your network operator or service provider for more information if menu options are not available.

To download from wap.sonyericsson.com

- 1 ▶ Internet services ▶ More ▶ Sony Ericsson.
- 2 Select what you want to download and follow the instructions that appear.

Stored information

When browsing, you can save information in your phone.



It is advisable to clear any sensitive information about previously visited Internet services. This is to avoid a security risk if your phone is misplaced, lost or stolen.

The following information can be saved:

- Cookies — improve site access efficiency.
- Passwords — improve server access efficiency.

To allow or clear cookies in your phone

Press **Settings** ▶ the **Connectivity** tab ▶ **Internet settings** ▶ **Cookies** and select an option and confirm.

To clear the password list

▶ **Settings** ▶ the **Connectivity** tab ▶ **Internet settings** ▶ **Clear passwords** and ▶ **Yes** to confirm.

Internet profile for Java™ applications

Some Java™ applications need to connect to the Internet to receive information, for example, games that download new levels from a game server.

You need an HTTP Internet profile to allow Java™ applications to connect to the Internet. Please contact your network operator or service provider for the correct settings.

To select a profile for Java™

- 1 ▶ **Settings** ▶ the **Connectivity** tab ▶ **Settings for Java™**.
- 2 Select the HTTP profile you want to use.

Internet security

Your phone has support for both WAP and HTTP secure browsing. To activate a secure connection to the WAP gateway, you need to turn on security in your Internet profile. If your Internet profile is an HTTP profile, the connection will be secure if the URL starts with https://.



Security for a connection between a WAP gateway and a WAP service provider is the responsibility of the WAP service provider.

To turn on a secure connection (WAP)

- 1 ▶ Settings ▶ the Connectivity tab
▶ Internet settings ▶ Internet profiles
and select a profile ▶ More ▶ Settings.
- 2 Turn on security.

Trusted certificates

To establish a secure connection when using certain Internet services, for example, banking, you need certificates in your phone.

Trusted certificates are used to verify the WAP gateway or the HTTP server that you are connecting to. Your phone may already contain trusted certificates when you buy it. You can also download new certificates using the browser.

To check the certificates in your phone

- ▶ Settings ▶ the Connectivity tab ▶ Internet settings
- ▶ Security ▶ Trusted cert.

Synchronizing

You can synchronize your phone contacts, appointments, tasks and notes with similar programs in, for example, a computer or mobile phone using Bluetooth, the infrared port or the optional USB cable (synchronization with nearby devices).

You can also synchronize with programs on the Internet using WAP or HTTP (remote synchronization with Internet services).

Please visit www.SonyEricsson.com/support to download the synchronization software and getting started guides on synchronization.

To select sync order for names

- ▶ Contacts ▶ Options ▶ Advanced ▶ Sync. order
- to select the order in which first and last name appear in the phone when you synchronize contacts.

Connectivity

Synchronization with nearby devices


Download and install the synchronization program from *www.SonyEricsson.com/support*. For detailed information, please refer to the computer synchronization software help.

Remote synchronization with Internet programs

Contact your network operator for more information about the programs on the Internet with which you can synchronize, and to receive username, password and addresses for the different programs. You must also have an Internet profile set in your mobile phone
► *56 Settings*.

To enter the remote synchronization settings

- **Organizer** ► **Synchronization** ► **New account**.
If you do not have an account, you will be asked if you want to create an account. ► **Yes** to create a new account.
- Enter a name for the new account ► **Continue**.
A list of items to enter will appear. Add the server address of the synchronization server, a server username and a server password. ► **OK** when you have entered each setting.


- **Connection** and select the WAP or HTTP profile that you want to use for the synchronization.
- **Remote initiation** to set whether to allow the synchronization server or other device to initiate a synchronization or not.
You can also choose to always be asked.
- **Sync. interval** to set how often you want the phone to automatically connect to the server and start synchronization.
- **Applications** and mark the applications that you want to synchronize, for example, **Contacts** ► **OK**.
- **App. settings** and select an application.
Enter the name of the database and, if required, your username and password ► **OK**.
- Press  ► **Save** to save your new account.

To start the remote synchronization

- **Organizer** ► **Synchronization** and select a remote account ► **Start**.


Bluetooth™ wireless technology

Your phone has built-in Bluetooth which makes it possible for you to connect your phone wirelessly to other Bluetooth devices. You are able to be connected to several Bluetooth devices at the same time. You can automatically synchronize information in your phone and your computer and use the remote control functionality to control applications on your computer. You can also exchange, for example, business cards, calendar items and pictures.

 *We recommend that your phone and the Bluetooth device you are communicating with are within a range of 10 metres. The connection may be improved if there are no solid objects between your phone and the other Bluetooth device.*

Before you start

To communicate with another Bluetooth device, you first need to turn Bluetooth on. You can also add the device to the list of devices in your phone. You can exchange items, use a remote screen and play games without adding the device to the list. To synchronize with your computer and browse the Internet, you also need to install software on your computer. Download it from www.SonyEricsson.com/support.

 *Please check if local laws or regulations restrict the use of Bluetooth. If Bluetooth is not allowed, you must ensure that the Bluetooth function is turned off. The maximum allowed Bluetooth radio output power in the phone is automatically adjusted according to possible local restrictions. This means that the range may vary.*

To turn Bluetooth on

- ▶ Settings ▶ the Connectivity tab
- ▶ Bluetooth ▶ Turn on.

To add a device to your phone

- 1 ▶ Settings ▶ the Connectivity tab ▶ Bluetooth ▶ My devices ▶ New device. The Bluetooth function of the other device must also be on and not hidden.
- 2 ▶ Add and your phone will search for all types of available Bluetooth devices.
- 3 The phone searches for Bluetooth devices. A list of available devices is displayed. Select a device.
- 4 If the device you are adding to your phone has its own passcode, enter this passcode in your phone. If not, create a passcode of digits yourself and enter it in both devices.

Connectivity

To organize your list of devices

- 1 ▶ Settings ▶ the Connectivity tab ▶ Bluetooth ▶ My devices and select a device from the list.
- 2 ▶ More to view a list of options.

Power save

You can choose to turn this feature on or off if you do not want to use several Bluetooth functions at the same time. If you turn it on, the phone will save power and it will prevent other devices from connecting to your phone when you are already connected to one.

To save power

- ▶ Settings ▶ the Connectivity tab ▶ Bluetooth ▶ Powersave ▶ On.

Phone name

Choose a unique name for your phone. This name is shown in other devices when your phone is found.

To enter a phone name

- ▶ Settings ▶ the Connectivity tab ▶ Bluetooth ▶ Phone name.

Visibility

In order for your phone to be found when searched for by other Bluetooth devices, you must make sure that Bluetooth is turned on and your phone is visible to other devices.

To hide or show your phone when using Bluetooth

- 1 ▶ Settings ▶ the Connectivity tab ▶ Bluetooth ▶ Visibility.
- 2 ▶ Show phone or Hide phone.

Sending and receiving

To send or receive an item using Bluetooth, you need to make sure that the devices are within range.

After you select Bluetooth as the transfer method for sending, a list of possible receiving devices is presented. The phone also searches for other devices that are shown in the list.

To send an item

- 1 Select the item that you want to send, ▶ Contacts and select a contact.
- 2 ▶ More ▶ Send contact ▶ Via Bluetooth. The phone searches for devices.
- 3 Select the device you want to send the item to ▶ Select.

To receive an item

- ▶ Settings ▶ the Connectivity tab ▶ Bluetooth
- ▶ Turn on. Make sure that your phone is visible to other devices. When you receive the item, follow the instructions that appear on the screen.


To add a Bluetooth handsfree to your phone

- 1 ▶ Settings ▶ the Connectivity tab ▶ Bluetooth ▶ Handsfree.
- 2 The first time you add a handsfree, Add a handsfree device to use with the phone? is displayed ▶ Yes.
- 3 If you already have a handsfree in your list of devices, ▶ Settings ▶ the Connectivity tab ▶ Bluetooth ▶ Handsfree ▶ My handsfree ▶ New handsfree ▶ Add. You should ensure that your Bluetooth handsfree is in pairing mode.

Transferring sound

When you are using a Bluetooth handsfree with your phone, you can choose where the sound should be transferred during a call. You can also select where the sound should be handled when answering an incoming call with the keypad.

To transfer sound when using a handsfree

During a call, press  ▶ Transfer sound. Select to transfer sound either to the phone or to other handsfree devices that have been added to your phone.

Directing sound

You can select where the sound should be handled when answering an incoming call with the keypad on the phone. If you use the button on the handsfree, the sound will always be in the handsfree.

To direct sound when answering a call with a handsfree

- 1 ▶ Settings ▶ the Connectivity tab ▶ Bluetooth ▶ Handsfree ▶ Incoming call.
- 2 ▶ In phone if you always want to have the sound in the phone or In handsfree if you want to direct the sound to the handsfree.

Remote control

You can use your phone as a remote control device to control computer applications such as a media player or Microsoft® PowerPoint® presentations. Your computer must support Bluetooth HID Profile.

Connectivity

To select remote control

- 1 ▶ Entertainment ▶ Remote control.
- 2 Select the application you want to use and the computer you want to connect to.


File transfer

You can use a computer to view and transfer content in the file manager. You can use the drag-and-drop function of your computer to:

- Transfer files between your phone and the computer.
- Delete files from the phone.

Infrared port

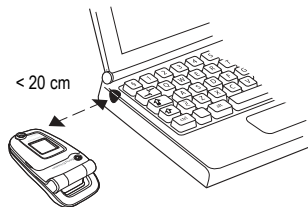
You can use the infrared port to establish contact between your phone and a computer or another device equipped with an infrared port. You can, for example, synchronize calendar items, ➤ *59 Synchronizing*, and send items such as pictures and contacts.

 *If you are connecting to a computer, please refer to its user documentation. Make sure that the infrared speed in the computer is set to 115200 bps.*

To turn the infrared port on

- ▶ Settings ▶ the Connectivity tab ▶ Infrared port
- ▶ On or ▶ 10 minutes to turn on infrared for 10 minutes only.

To connect two devices



- 1 Turn on the infrared port of both devices.
- 2 Make sure that the infrared port on your phone faces the infrared port on the other device.
- 3 Your phone now establishes contact with the other device.

To send an item using the infrared port (example: a contact)

- 1 Make sure that the infrared ports of both devices are on. ▶ Contacts and select a contact.
- 2 ▶ More ▶ Send contact ▶ Via infrared.

More features

Time and date, alarm clock, calendar, tasks, Java™ applications, SIM card lock, etc.

Time and date

The time is always displayed in standby.

- To set the time ► **Settings** ► the **General** tab ► **Time & date** ► **Time**. Enter the time ► **Save**.
- To set the time format ► **Format** and select an option.
- To set the date and date format ► **Settings** ► the **General** tab ► **Time & date** ► **Date**.

Alarm clock

The alarm can be set to ring at a specific time within 24 hours, or recurrently at a specific time on several days. You can have both these alarms set at the same time. The alarm signal rings even if the phone is set to silent or turned off.

To set an alarm

- **Organizer** ► **Alarms** ► **Alarm** and enter the time
- **Save**.

Using the alarm

- To change the alarm time ► **Organizer** ► **Alarms** ► **Alarm** and enter a new time.
- To turn the alarm signal off when it rings, press any key. If you do not want the alarm to be repeated ► **Turn off**.
- To cancel the alarm ► **Organizer** ► **Alarms** ► **Alarm** ► **Turn off**.
- To set a recurrent alarm ► **Organizer** ► **Alarms** ► **Recurrent alarm**. Enter the time and select the days that you want the alarm to recur on by scrolling and pressing **Mark**. ► **Done** to exit the menu.
- To select an alarm signal ► **Organizer** ► **Alarms** ► **Alarm signal**. Select a sound.

Calendar

You can use the calendar to keep track of important meetings. The calendar can be synchronized with a computer calendar or with a calendar on the Web, ► *59 Synchronizing*.

Appointments

You can choose to add a new appointment or use an old one as a template by copying and editing it. You can also set reminders for appointments.

More features

To add a new appointment

- 1 ▶ Organizer ▶ Calendar and highlight the date for the appointment ▶ Select ▶ New appointment ▶ Add.
- 2 Enter details and confirm each entry.

To view an appointment

- 1 Organizer ▶ Calendar and select a day on which you have an appointment (marked in bold).
- 2 Scroll to the appointment ▶ View.

To view your calendar content

- ▶ Organizer ▶ Calendar. Days on which you have appointments are marked in bold. ▶ More ▶ View week to view a certain week.

To set when reminders should sound

- 1 ▶ Organizer ▶ Calendar ▶ More ▶ Advanced ▶ Reminders.
- 2 ▶ Always if you want the reminder to sound even though the phone is turned off. When the reminder sounds ▶ Yes to read the appointment. ▶ No to turn off the reminder. A reminders option set in the calendar affects a reminders option set in tasks.

Navigating in your calendar

Use the navigation key to move between days or weeks. In the monthly and weekly views, you can also use the keypad as follows.

- | | |
|---|---|
| <input type="button" value="1"/> Back a week | <input type="button" value="3"/> Next week |
| <input type="button" value="4"/> Back a month | <input type="button" value="6"/> Next month |
| <input type="button" value="7"/> Back a year | <input type="button" value="9"/> Next year |
| <input type="button" value="C"/> Today's date | |

Calendar settings

- ▶ Organizer ▶ Calendar ▶ More and select an option.
- View week — select, add, edit or delete appointments.
 - New appointment — add a new appointment.
 - Change date — change the date of your calendar.
 - Advanced — for options to find, delete all, set reminders or select a start day for the week.

Exchanging appointments

You can send and receive appointments using one of the available transfer methods.

To send an appointment

In the list of appointments for a certain day, select the item you want to send ▶ More ▶ Send and select a transfer method.

Tasks

You can keep track of phone calls you need to make or tasks that you need to do. You can choose to add a new task or use an old one as a template by copying and editing it. You can also set a reminder for a task.

To add a new task

- 1 ▶ Organizer ▶ Tasks ▶ New task ▶ Add.
- 2 Select a category. If the category is a phone call, enter the phone number ▶ Continue.
- 3 Enter a subject ▶ Continue.
- 4 If you want to set a reminder for your task ▶ Yes.

To view a task

▶ Organizer ▶ Tasks and select a task ▶ View.

To set when reminders should sound

- 1 ▶ Organizer ▶ Tasks and select a task ▶ More ▶ Reminders.
- 2 ▶ Always if you want the reminder to sound even though the phone is turned off. When the reminder sounds ▶ Yes to read the task, or to call the phone number in a phone task. ▶ No to turn off the reminder. A reminders option set in tasks affects a reminders option set in the calendar.

Exchanging tasks

You can send and receive tasks using one of the available transfer methods. You can also synchronize tasks with a computer, ➔ 59 *Synchronizing*.

To send a task

- 1 In the list of tasks for a certain day, select the item you want to send ▶ More ▶ Send.
- 2 Select a transfer method.

Notes

If you need to remember something, you can make a note of it in your phone.

To add a note

▶ Organizer ▶ Notes ▶ New note ▶ Add and enter the note ▶ Save.

To handle notes

- 1 ▶ Organizer ▶ Notes and a list of notes appears.
- 2 Select the note that you want to handle. ▶ More to edit, show a note in standby (or hide it), send or delete a note.

More features

Exchanging notes

You can send and receive notes using one of the available transfer methods. You can also synchronize notes with a computer, ➤ *59 Synchronizing*.

To send a note

► **Organizer** ► **Notes** and select the note that you want to send ► **More** ► **Send** and select a transfer method.

Profiles

Your phone has predefined profiles that are set to suit a certain environment. You can reset all profile settings to the way they were set when you bought your phone.

To select a profile

► **Settings** ► the **General** tab ► **Profiles**
► **Select profile**.

To change a profile setting

► **Settings** ► the **General** tab ► **Profiles** ► **Edit profile** and select the setting that you want to change.

To rename a profile

► **Settings** ► the **General** tab ► **Profiles** ► **Edit profile**
► **Profile name**. You cannot rename the normal profile.

Stopwatch

Your phone has a stopwatch that can save several laps. The stopwatch continues to run when you answer an incoming call.

To use the stopwatch

- 1 ► **Organizer** ► **Stopwatch** ► **Start**.
- 2 ► **Stop** or ► **New lap** if you want a lap time.
- 3 To reset the stopwatch ► **Reset**.


Timer

To set the timer

► **Organizer** ► **Timer** and enter the hours, minutes and seconds after which you want the timer to go off. When the signal rings, press any key to turn it off.

Brightness

You can adjust the brightness of the screen.

 *Some functions use more battery power than others and may cause a need for more frequent re-charging.*

To set the brightness

► Settings ► the Display tab ► Brightness.



Start-up screen

When you turn your phone on, the start-up screen appears. You can also set your own start-up screen.

To select a start-up screen





► Settings ► the Display tab ► Start-up screen and select an option for the start-up screen.

Calculator

The calculator can add, subtract, divide and multiply.

To use the calculator

► Organizer ► Calculator.

- Press  or  to select \div \times $-$ $+$ $.$ $\%$ $=$.
- Press  to delete the figure.
- Press  to enter a decimal point.

Java™ applications

You can run Java™ applications on your phone. Games and other Java applications can be downloaded to your phone from the Internet.

Java application security

Java applications are automatically installed as “Trusted” or “Untrusted”. Trusted applications are allowed to, for example, connect to networks, send messages or use the camera without asking for permission. Untrusted applications, however, must always confirm such actions with you first. You can set different permission levels for your Java applications.

To set permissions for a Java™ application

- 1 ► File manager ► Applications or ► Games.
- 2 Select an application or a game ► More ► Permissions.
- 3 ► Internet access, Messaging or Multimedia.
- 4 ► No, Always ask or Ask once to set the permission level you want for the application.

More features

Java application screen size

Some Java applications are designed for a specific screen size. In some cases, applications may not be able to start because the phone cannot adapt the application to the screen. Contact the application vendor to find out what screen size the application is designed for, and change the screen settings for the application in the phone.

To set the screen size for a Java application

- 1 ▶ File manager ▶ Applications or ▶ Games.
- 2 Select an application or a game ▶ More ▶ Screen size.
- 3 Select one of the listed options. If you selected **User defined** you can edit the **Width:** and **Height:** values.

SIM card lock

The SIM card lock protects your subscription, but not your phone itself, from unauthorized use. If you change SIM cards, your phone still works with the new SIM card.

Most SIM cards are locked at the time of purchase. If the SIM card lock is on, you have to enter a PIN

(Personal Identity Number) every time you turn on your phone.

If you enter your PIN incorrectly three times in a row, the SIM card is blocked. This is indicated by the message **PIN blocked**. To unblock it, you need to enter your PUK (Personal Unblocking Key). Your PIN and PUK are supplied by your network operator. You can edit your PIN and select a new four- to eight-digit PIN.



*If the message **Codes do not match** appears when you edit your PIN, you entered the new PIN incorrectly. If the message **Wrong PIN** appears, followed by **Old PIN:**, you entered your old PIN incorrectly.*

To unblock your SIM card

- 1 When **PIN blocked** is displayed, enter your PUK ▶ OK.
- 2 Enter a new four- to eight-digit PIN ▶ OK.
- 3 Re-enter the new PIN to confirm ▶ OK.

To edit your PIN

- 1 ▶ Settings ▶ the **General** tab ▶ Locks ▶ SIM lock ▶ Change PIN.
- 2 Enter your PIN ▶ OK.
- 3 Enter a new four- to eight-digit PIN ▶ OK.
- 4 Re-enter the new PIN to confirm ▶ OK.

To turn the SIM card lock on or off

- ▶ Settings ▶ the General tab ▶ Locks
▶ SIM lock ▶ Protection and select On or Off.
- Enter your PIN ▶ OK.

Phone lock

The phone lock protects your phone against unauthorized use if it is stolen and the SIM card is exchanged. You can change the phone lock code (0000) to any four- to eight-digit personal code.

Automatic phone lock

If the phone lock is set to automatic, you do not need to enter your phone lock code until a different SIM card is inserted in the phone.



It is important that you remember your new code. If you should forget it, you have to hand in your phone to your local Sony Ericsson retailer.

To set the phone lock

- ▶ Settings ▶ the General tab ▶ Locks
▶ Phone lock ▶ Protection and select an alternative.
- Enter the phone lock code ▶ OK.

To unlock the phone

If the phone lock is on, enter your code ▶ OK.

To edit your phone lock code

- ▶ Settings ▶ the General tab ▶ Locks ▶ Phone lock
- ▶ Change code.

Code memo

Instead of having to remember security codes for credit cards, for example, you can save them in the code memo in your phone. All you need to remember is the passcode to open the code memo.

Checkword and security

To confirm that you have entered the correct passcode for the code memo and to prevent unauthorized access to your codes, you must enter a checkword.

When you enter your passcode to open the code memo, the checkword is shown for a short time. If the passcode is correct, the correct codes are shown. If you enter the incorrect passcode, the checkword and the codes that are shown are also incorrect.

More features

To open code memo for the first time

- 1 ▶ **Organizer** ▶ **Code memo**. A message with instructions is displayed ▶ **Continue**.
- 2 Enter a four-digit passcode to open code memo ▶ **Continue**.
- 3 Re-enter the new passcode to confirm.
- 4 Enter a checkword (maximum 15 characters) ▶ **Done**. The checkword can consist of both letters and numbers.

To add a new code

- 1 ▶ **Organizer** ▶ **Code memo** and enter your passcode ▶ **New code** ▶ **Add**.
- 2 Enter a name associated with the code, ▶ **Continue**.
- 3 Enter the code ▶ **Done**.

To change the passcode

- 1 Open code memo as described above ▶ **More** ▶ **Change passcode**.
- 2 Enter your new passcode ▶ **Continue**.
- 3 Re-enter the new passcode ▶ **Continue**.
- 4 Enter a checkword ▶ **Done**.

Forgot your passcode?

If you forget your passcode, you must reset the code memo.

To reset code memo

- 1 ▶ **More** ▶ **Reset**.
- 2 **Reset code memo?** is displayed ▶ **Yes**.
The code memo is reset and all entries are cleared. The next time you enter the code memo, you must start by opening the code memo for the first time.

Troubleshooting

Why doesn't the phone work the way I want?

This chapter lists some problems that you might encounter while using your phone. Some problems require you to call your network operator, but you can easily correct most of the problems yourself.

However, if you need to hand in your phone for repair, please note that you may lose information and content that you have saved in your phone. You are advised to make a copy of such information before handing your phone in for repair.

For more support go to www.SonyEricsson.com/support.

I have problems with memory capacity or the phone working slowly

Possible cause: The phone memory is full.

Solution: Restart your phone every day to free memory and increase the capacity of your phone. You also have the option to do a **Master reset**. Some of your personal data and settings you have made will be lost when doing this.

➡ 75 *Master reset.*

No battery icon appears when I start charging the phone

Possible cause: The battery is empty or has not been used for a long time.

Solution: It may take up to 30 minutes before the battery icon appears on the screen.

Some menu options appear in grey

Possible cause: Grey text indicates a function that is temporarily unavailable. A service is not activated or your subscription does not support the function.

Solution: Contact your network operator.

Possible cause: Since you cannot send themes, pictures and sounds that are copyright-protected, the **Send** menu is sometimes unavailable.

The wrong language appears on my phone

Possible cause: The wrong language is set in the phone.

Solution: Change the language,

➡ 13 *Phone language.*

I cannot turn on the phone

Possible cause: The battery is discharged.

Solution: Recharge the battery,

➡ 5 *To charge the battery.*

Troubleshooting

Solution: Make sure you attached the charger correctly. Turn the phone on with the charger attached. If the phone starts, restart the phone with no charger attached.

I cannot charge the phone or battery capacity is low

Possible cause: The charger is not properly connected to the phone.

Solution: Make sure that the charger connector clicks properly into place when connected. The battery icon flashes when charging is in progress, and stops when the battery is fully charged,

➡ *5 To charge the battery.*

Possible cause: The battery connection is bad.

Solution: Remove the battery and clean the connectors. You can use a soft brush, cloth or cotton swab, soaked with alcohol. Make sure that the battery is completely dry before you put it back. Check that the battery connectors in the phone are undamaged.

Possible cause: The battery is worn out and needs to be replaced.

Solution: Try another battery and charger for the same phone model, or visit your retailer and ask them to verify if the battery and charger are working properly.

The phone turns itself off

Possible cause: The battery connection is bad.

Solution: Make sure the battery is inserted correctly,

➡ *5 To insert SIM card and battery.*

I cannot use SMS/text messages on my phone

Possible cause: Settings are missing or incorrect.

Solution: Contact your network operator to find out the correct SMS service centre setting,

➡ *34 Text messaging (SMS).*

I cannot use MMS/picture messages on my phone

Possible cause: Your subscription does not include data capability.

Solution: Please contact your network operator.

Possible cause: Settings are missing or incorrect.

Solution: Go to www.SonyEricsson.com/support, choose your phone model, then choose “Phone setup — MMS” and follow the instructions.

➡ *56 Settings.*

I cannot use the Internet/WAP

Possible cause: Your subscription does not include data capability.

Solution: Please contact your network operator.

Possible cause: Internet settings are missing or incorrect.

Solution: Go to www.SonyEricsson.com/support, choose your phone model, then choose “Phone setup — WAP” and follow the instructions.

➡ 56 Settings.

The phone cannot be detected by other users via Bluetooth

Possible cause: You have not turned Bluetooth on.

Solution: Make sure that Bluetooth is turned on and that your phone is visible to other users.

➡ 62 To hide or show your phone when using Bluetooth.

Master reset

The changes that you have made to settings and the content that you have added or edited, will be deleted.

- If you select **Reset settings**, the changes that you have made to settings will be deleted.
- If you select **Reset all**, in addition to your changes to settings, all contacts, messages, personal data, and content that you have downloaded, received or edited will also be deleted.

To reset the phone

- 1 ▶ Settings ▶ the General tab ▶ Master reset.
- 2 ▶ Reset settings or ▶ Reset all.
- 3 ▶ Yes to continue.
- 4 Enter the phone lock code (0000 or the new code if you have changed it) ▶ OK.



*If you select **Reset all**, content such as melodies and pictures that you have downloaded, received or edited is also deleted.*

Error messages

Insert SIM

Possible cause: There is no SIM card in the phone or you may have inserted it incorrectly.

Solution: Insert a SIM card. ➡ 5 To insert SIM card and battery.

Possible cause: The SIM card connectors need cleaning.

Solution: Remove the SIM card and clean it. Also check that the card is not damaged in a way that may prevent connection to the phone connectors. In that case, contact your network operator for a new SIM card.

Troubleshooting

Insert correct SIM card

Possible cause: The phone is set to work only with certain SIM cards.

Solution: Check if you are using the correct operator SIM card for your phone.

Wrong PIN/Wrong PIN2

Possible cause: You have entered your PIN or PIN2 incorrectly.

Solution: Enter the correct PIN or PIN2

► Yes. ➡ 70 SIM card lock.

PIN blocked/PIN2 blocked

Possible cause: You have entered your PIN or PIN2 code incorrectly three times in a row.

Solution: To unblock, ➡ 70 SIM card lock.

Codes do not match

Possible cause: The two codes that you have entered do not match.

Solution: When you want to change a security code (for example your PIN) you have to confirm the new code by entering exactly the same code again.

➡ 70 SIM card lock.

No netw. coverage

Possible cause: Your phone is not receiving any radio signal, or the received signal is too weak.

Solution: Contact your network operator and make sure that the network has coverage where you are. If so, try to do a new search.

Possible cause: The SIM card is not working properly.

Solution: Insert your SIM card in another phone. If you still get the same or a similar message, please contact your network operator.

Possible cause: The phone is not working properly.

Solution: Insert your SIM card in another phone.

If this works, it is probably the phone that is causing the problem. Please contact the nearest Sony Ericsson service location.

Emerg. calls only

Possible cause: You are within range of a network, but you are not allowed to use it. However, in an emergency, some network operators allow you to call the international emergency number 112.

Solution: You have to move to get a signal that is strong enough. Contact your network operator and make sure your subscription is ok.

➡ 20 Emergency calls.

Phone locked

Possible cause: The phone is locked.

Solution: To unlock the phone, ➡ 71 Phone lock.

Phone lock code:

Possible cause: The phone lock code is required.

Solution: Enter the phone lock code. Your phone comes with the default phone lock code 0000.

You can change it to any four- to eight-digit code.

➡ 71 Phone lock.

PUK blocked

Possible cause: You entered your personal unblocking key code (PUK) incorrectly 10 times in a row.

Solution: Contact your network operator.

Charging, alien battery

Possible cause: The battery that you are using is not a Sony Ericsson approved battery.

Solution: ➡ 80 Battery use and care.

Important information

Sony Ericsson Consumer Web site, safe and efficient use, warranty, declaration of conformity.

Sony Ericsson Consumer Web site

On www.SonyEricsson.com/support there is a support section where help and tips are only a few clicks away. Here you find the latest computer software updates and tips on how to use your product more efficiently.

Guidelines for Safe and Efficient Use

Please read this information before using your mobile phone.



Recommendations

- Always treat your product with care and keep it in a clean and dust-free place.
- Do not expose your product to liquid or moisture or humidity.
- Do not expose your product to extreme high or low temperatures.
- Do not expose your product to open flames or lit tobacco products.
- Do not drop, throw or try to bend your product.



Important information

- Do not close your product with an object inserted between keypad and display; this may damage your product.
- Do not paint your product.
- Do not use your product near medical equipment without requesting permission.
- Do not use your product when in, or around aircraft, or areas posted “turn off two-way radio”.
- Do not use your product in an area where a potentially explosive atmosphere exists.
- Do not place your product or install wireless equipment in the area above your car’s air bag.
- Do not attempt to disassemble your product. Only Sony Ericsson authorized personnel should perform service.



Antenna

Only use an antenna that has been specifically designed by Sony Ericsson for your mobile phone. Use of unauthorized or modified antennas could damage your mobile phone and may violate regulations, causing loss of performance and SAR levels above the recommended limits (see below).

Efficient use

Hold your mobile phone as you would any other phone. Do not cover the top of the phone when in use, as this affects call quality and may cause the phone to operate at a higher power level than needed, thus shortening talk and standby times.

Radio frequency (RF) exposure and SAR

Your mobile phone is a low-power radio transmitter and receiver. When it is turned on, it emits low levels of radio frequency energy (also known as radio waves or radio frequency fields).

Governments around the world have adopted comprehensive international safety guidelines, developed by scientific organizations, e.g. ICNIRP (International Commission on Non-Ionizing Radiation Protection) and IEEE (The Institute of Electrical and Electronics Engineers Inc.), through periodic and thorough evaluation of scientific studies. These guidelines establish permitted levels of radio wave exposure for the general population. The levels include a safety margin designed to assure the safety of all persons, regardless of age and health, and to account for any variations in measurements.

Specific Absorption Rate (SAR) is the unit of measurement for the amount of radio frequency energy absorbed by the body when using a mobile phone. The SAR value is determined at the highest certified power level in laboratory conditions, but the actual SAR level of the mobile phone while operating can be well below this value. This is because the mobile phone is designed to use the minimum power required to reach the network.

Variations in SAR below the radio frequency exposure guidelines do not mean that there are variations

in safety. While there may be differences in SAR levels among mobile phones, all Sony Ericsson mobile phone models are designed to meet radio frequency exposure guidelines.

A separate leaflet with SAR information for this mobile phone model is included with the material that comes with this mobile phone. This information can also be found, together with more information on radio frequency exposure and SAR, on: www.sonyericsson.com.

Driving

Please check if local laws and regulations restrict the use of mobile phones while driving or require drivers to use handsfree solutions. We recommend that you use only Sony Ericsson handsfree solutions intended for use with your product. Please note that because of possible interference to electronic equipment, some vehicle manufacturers forbid the use of mobile phones in their vehicles unless a handsfree kit with an external antenna supports the installation.

Always give full attention to driving and pull off the road and park before making or answering a call if driving conditions so require.

Personal medical devices

Mobile phones may affect the operation of cardiac pacemakers and other implanted equipment. Please avoid placing the mobile phone over the pacemaker, e.g. in your breast pocket. When using the mobile phone, place it at the ear opposite the pacemaker. If a minimum distance of 15 cm (6 inches) is kept between the mobile phone and the pacemaker, the risk of interference is limited. If you have any reason to suspect that interference is taking place, immediately turn off your mobile phone. Contact your cardiologist for more information.

For other medical devices, please consult the manufacturer of the device.

CHILDREN

DO NOT ALLOW CHILDREN TO PLAY WITH YOUR MOBILE PHONE OR ITS ACCESSORIES. THEY COULD HURT THEMSELVES OR OTHERS, OR COULD ACCIDENTALLY DAMAGE THE MOBILE PHONE OR ACCESSORY. YOUR MOBILE PHONE OR ITS ACCESSORY MAY CONTAIN SMALL PARTS THAT COULD BE DETACHED AND CREATE A CHOKING HAZARD.



Important information

Disposal of old electrical & electronic equipment

This symbol on the product or on its packaging indicates that this product shall not be treated as household waste.

Instead it shall be handed over to the applicable collection point for the recycling of electrical and electronic equipment. By ensuring this product is disposed of correctly, you will help prevent potential negative consequences for the environment and human health, which could otherwise be caused by inappropriate waste handling of this product. The recycling of materials will help to conserve natural resources. For more detailed information about recycling of this product, please contact your local city office, your household waste disposal service or the shop where you purchased the product.



Power supply

Connect the AC power adapter only to designated power sources as marked on the product. Make sure the cord is positioned so that it will not be subjected to damage or stress. To reduce risk of electric shock, unplug the unit from any power source before attempting to clean it. The AC power adapter must not be used outdoors or in damp areas. Never alter the cord or plug. If the plug will not fit into the outlet, have a proper outlet installed by a qualified electrician.

Emergency calls

Mobile phones operate using radio signals, which cannot guarantee connection under all conditions. Therefore you should never rely solely upon any mobile phone for essential communications (e.g. medical emergencies).

Emergency calls may not be possible on all cellular networks or when certain network services and/or mobile phone features are in use. Check with your local service provider.

Battery use and care

We recommend that you fully charge the battery before you use your mobile phone for the first time. The battery should only be charged in temperatures between +5°C (+41°F) and +45°C (+113°F).

A new battery or one that has not been used for a long time could have reduced capacity the first few times it is used.

The talk and standby times depend on the actual transmission conditions when using the mobile phone. If the mobile phone is used near a base station, less power is required and talk and standby times are prolonged.

- **Warning!** May explode if disposed of in fire.
- Use only Sony Ericsson branded original batteries and chargers intended for use with your mobile phone. Other chargers may not charge sufficiently or may produce excessive heat. Using other batteries and chargers could be dangerous.

- Do not expose the battery to liquid.
- Do not let the metal contacts on the battery touch another metal object. This could short-circuit and damage the battery.
- Do not disassemble or modify the battery.
- Do not expose the battery to extreme temperatures, never above +60°C (+140°F). For maximum battery capacity, use the battery in room temperature.
- Turn off your mobile phone before removing the battery.
- Keep out of children's reach.
- Use the battery for the intended purpose only.
- Do not allow the battery to be put into the mouth. Battery electrolytes may be toxic if swallowed.



Disposing of the battery

Please check local regulations for disposal of batteries or call your local Sony Ericsson Call Center for information.

The battery should never be placed in municipal waste. Use a battery disposal facility if available.



End User Licence Agreement

This wireless device ("Device") contains software owned by Sony Ericsson Mobile Communications AB ("Sony Ericsson") and its third party suppliers and licensors ("Software").

As user of this Device, Sony Ericsson grants you a non-exclusive, non-transferable, non-assignable license to use the Software solely in conjunction with the Device on which it is installed. Nothing herein shall be construed as a sale of the Software to a user of this Device.

You shall not reproduce, modify, distribute, reverse engineer, decompile, otherwise alter or use any other means to discover the source code of the Software or any component of the Software. For avoidance of doubt, you are at all times entitled to transfer all rights and obligations to the Software to a third party, solely together with the Device with which you received the Software, provided always that such third party agrees in writing to be bound by these rules.

You are granted this license for a term of the useful life of this Device. You can terminate this license by transferring all your rights to the Device on which you have received the Software to a third party in writing. If you fail to comply with any of the terms and conditions set out in this license, it will terminate with immediate effect.

Important information

Sony Ericsson and its third party suppliers and licensors are the sole and exclusive owner of and retain all rights, title and interest in and to the Software. Sony Ericsson, and, to the extent that the Software contains material or code of a third party, such third party, shall be entitled third party beneficiaries of these terms.

The validity, construction and performance of this license shall be governed by the laws of Sweden. The foregoing shall apply to the full extent permitted by, when applicable, statutory consumer rights.

Limited Warranty

Sony Ericsson Mobile Communications AB, S-221 88 Lund, Sweden, (Sony Ericsson), provides this Limited Warranty for your mobile phone and original accessory delivered with your mobile phone (hereinafter referred to as "Product").

Should your Product need warranty service, please return it to the dealer from whom it was purchased, or contact your local Sony Ericsson Call Center (national rates may apply) or visit www.SonyEricsson.com to get further information.

Our warranty

Subject to the conditions of this Limited Warranty, Sony Ericsson warrants this Product to be free from defects in design, material and workmanship at the time of its original purchase by a consumer, and for a subsequent period of one (1) year.

What we will do

If, during the warranty period, this Product fails to operate under normal use and service, due to defects in design, materials or workmanship, Sony Ericsson authorised distributors or service partners, in the country/region* where you purchased the Product, will, at their option, either repair or replace the Product in accordance with the terms and conditions stipulated herein.

Sony Ericsson and its service partners reserve the right to charge a handling fee if a returned Product is found not to be under warranty according to the conditions below.

Please note that some of your personal settings, downloads or other information may be lost when your Sony Ericsson Product is repaired or replaced. At present Sony Ericsson may be prevented by applicable law, other regulation or technical restrictions from making a backup copy of certain downloads. Sony Ericsson does not take any responsibility for any lost information of any kind and will not reimburse you for any such loss. You should always make backup copies of all the information stored on your Sony Ericsson Product such as downloads, calendar and contacts before handing in your Sony Ericsson Product for repair or replacement.

Conditions

- 1** The warranty is valid only if the original proof of purchase issued to the original purchaser by an, for this Product, Sony Ericsson authorised dealer, specifying the date of purchase and serial number**, is presented with the Product to be repaired or replaced. Sony Ericsson reserves the right to refuse warranty service if this information has been removed or changed after the original purchase of the Product from the dealer.
- 2** If Sony Ericsson repairs or replaces the Product, the repaired or replaced Product shall be warranted for the remaining time of the original warranty period or for ninety (90) days from the date of repair, whichever is longer. Repair or replacement may involve the use of functionally equivalent reconditioned units. Replaced parts or components will become the property of Sony Ericsson.
- 3** This warranty does not cover any failure of the Product due to normal wear and tear, or due to misuse, including but not limited to use in other than the normal and customary manner, in accordance with the Sony Ericsson instructions for use and maintenance of the Product. Nor does this warranty cover any failure of the Product due to accident, software or hardware modification or adjustment, acts of God or damage resulting from liquid. A rechargeable battery can be charged and discharged hundreds of times. However, it will eventually wear out – this is not a defect. When the talk-time or standby time is noticeably shorter, it is time to replace your battery. Sony Ericsson recommends that you use only batteries and chargers approved by Sony Ericsson. Minor variations in display brightness and color may occur between phones. There may be tiny bright or dark dots on the display. These are called defective pixels and occur when individual dots have malfunctioned and cannot be adjusted. Two defective pixels are deemed acceptable. Minor variations in camera image appearance may occur between phones. This is nothing uncommon and is not regarded as a defective camera module.
- 4** Since the cellular system on which the Product is to operate is provided by a carrier independent from Sony Ericsson, Sony Ericsson will not be responsible for the operation, availability, coverage, services or range of that system.
- 5** This warranty does not cover Product failures caused by installations, modifications, or repair or opening of the Product performed by a non-Sony Ericsson authorised person.
- 6** The warranty does not cover Product failures which have been caused by use of accessories or other peripheral devices which are not Sony Ericsson branded original accessories intended for use with the Product.
- 7** Tampering with any of the seals on the Product will void the warranty.

Important information

8 THERE ARE NO EXPRESS WARRANTIES, WHETHER WRITTEN OR ORAL, OTHER THAN THIS PRINTED LIMITED WARRANTY. ALL IMPLIED WARRANTIES, INCLUDING WITHOUT LIMITATION THE IMPLIED WARRANTIES OF MERCHANTABILITY OR FITNESS FOR A PARTICULAR PURPOSE, ARE LIMITED TO THE DURATION OF THIS LIMITED WARRANTY. IN NO EVENT SHALL Sony Ericsson OR ITS LICENSORS BE LIABLE FOR INCIDENTAL OR CONSEQUENTIAL DAMAGES OF ANY NATURE WHATSOEVER, INCLUDING BUT NOT LIMITED TO LOST PROFITS OR COMMERCIAL LOSS; TO THE FULL EXTENT THOSE DAMAGES CAN BE DISCLAIMED BY LAW.

Some countries/states do not allow the exclusion or limitation of incidental or consequential damages, or limitation of the duration of implied warranties, so the preceding limitations or exclusions may not apply to you.

The warranty provided does not affect the consumer's statutory rights under applicable legislation in force, nor the consumer's rights against the dealer arising from their sales / purchase contract.

*EUROPEAN UNION (EU)

If you have purchased your Product in an EU country you can have your Product serviced, under the conditions set out above, within the warranty period in any EU country where an identical Product is sold by an authorized Sony Ericsson distributor. To find out if your Product is sold in the EU country you are in, please call the local Sony Ericsson Call Center. Please observe that certain services may not be possible elsewhere than in the country of original purchase, for example due to the fact that your Product may have an interior or exterior which is different from equivalent models sold in other EU countries. It may not be possible to repair SIM-locked Products.

** In some countries/regions additional information is requested. If so, this is clearly shown on the valid proof of purchase.

FCC Statement

This device complies with Part 15 of the FCC rules. Operation is subject to the following two conditions:

(1) This device may not cause harmful interference, and (2) This device must accept any interference received, including interference that may cause undesired operation.



Declaration of Conformity

We, **Sony Ericsson Mobile Communications AB** of
Nya Vattentorget
S-221 88 Lund, Sweden

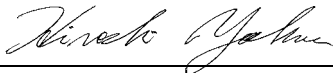
declare under our sole responsibility that our product

Sony Ericsson type AAC-1052011-BV

and in combination with our accessories, to which this
declaration relates is in conformity with the appropriate
standards 3GPP TS 51.010-1, EN 301489-7,
EN 300328, EN 301489-17 and EN 60950, following
the provisions of, Radio Equipment and
Telecommunication Terminal Equipment directive
99/5/EC with requirements covering EMC directive
89/336/EEC, and Low Voltage directive **73/23/EEC**.

Lund, June 2005

 0682














*Hiroshi Yoshioka, Head of Product Business Unit
GSM/UMTS.*

We fulfill the requirements of the R&TTE Directive
(**99/5/EC**).














Icons

Icon descriptions.













Icon Description

	Tells the strength of the GSM network signal
	GPRS is available
	You are in a premium charge zone
	Tells you the status of the battery
	You cannot receive any incoming calls
	You have missed an incoming call
	All incoming calls are diverted to a defined number
	All signals are off, except the alarm
	The alarm clock has been set and is on
	The timer has been set and is on
	The stopwatch is activated



Icon Description

	You have set a reminder for an appointment
	You have set a reminder for a task
	A profile other than Normal has been chosen
	The magic word is activated
	Speaker phone is activated
	The card lock or phone lock is on A secure Internet connection is established
	You have received a text message
	You have received an email message
	Your phone is receiving a picture message
	Your phone is sending a picture message
	You have received a picture message
	You have received a voice message
	You have received a WAP push message

Icon Description

-  The infrared port is on
-  Infrared communication is in progress
-  Bluetooth is turned on
-  Bluetooth headset is connected to your phone
-  Data is being downloaded to the phone
-  Data is being uploaded from the phone
-  Line 1 is in use for outgoing calls
-  Line 2 is in use for outgoing calls
-  Ciphering is currently not being provided by the network
-  An ongoing call
-  The media player is running
-  **Java** A Java™ application is running

Icon Description

-  Your movie can be sent using picture messaging
-  Your movie is too large and cannot be sent using picture messaging

Index

A

- accept calls 31
- account settings, email 40
- activity menu 15
- alarm clock 65
- alerts 52
- animations 46
- answering
 - calls 19
 - using voice control 27
- answering service 25
- appointments 65
- area information 43
- ask to save 22
- assembling, phone 5
- automatic redialling 19

B

- back cover, replace 8
- battery
 - charging 5
 - inserting 5

use and care 80

- bookmarks
 - Internet 57
- bookmarks, Internet 57
- brightness 44
 - display 69
- business cards 33
- buttons 9

C

- calculator 69
- calendar 65–66
- call list 24
- call time 32
- call waiting 29
- caller-specific ringtones 52
- calling
 - from call list 25
 - from contacts 22
 - numbers in message 35
 - using voice dialling 27

calls

- accepting 31
- answering 19
- automatic redialling 19
- diverting 28
- emergency 20
- fixed dialling 32
- handling two calls 30
- international 19
- making 7, 18
- making notes during 33
- missed 19
- putting on hold 29
- receiving 7, 19
- recording 54
- rejecting 19
- restricting 31
- speed dialling 25
- camera 43–45
- cell information 43
- certificates, Internet security 59
- charging, battery 5

- code memo 71
- codes
 - PIN 6
 - PUK 6
- conference calls 30
- connectors 9
- contacts 20, 21
 - adding phone contacts 21
 - checking memory 23
 - default contacts 20
 - groups of 33
 - synchronizing 59
- cookies 58
- copying
 - to/from SIM card 24
- cover, replace 7
- D**
- date, setting 65
- declaration of conformity 85
- directing sound 63
- display
 - brightness 69
- diverting calls 28

- E**
- email
 - using 40–41
- events, set notification 16
- events, view 16

- F**
- file manager 16
- fixed dialling 32
- front cover, replace 7

- G**
- games 55
- groups 33

- H**
- handsfree 63
- help texts, in phone 12
- hiding number 33

- I**
- icons 86
- infrared port 64
- instant messaging *See*
- My friends 42

- international calls 19
- Internet
 - bookmarks 57
 - cookies 58
 - security 59
 - settings 56

- J**
- Java™, settings 58

- K**
- key sound 52
- keys 9
- keys and navigation 11

- L**
- language
 - changing 13
 - in phone 13, 73
- letters
 - entering 13–15
- light effects 17, 21, 22
- locks
 - SIM card 70
- long messages 36

Index

loudspeaker, activate
before answer 18
loudspeaker, using 18

M

magic word 27
main menu 11
media player 48–50
melodies 51–52
message alert 52
messages
 area information 43
 cell information 43
 email 40
 instant 42
 picture 37, 39
 text 34
 voice 39
microphone, turning off/
on 18 missed calls 19
MMS *See* picture messages 37, 39
multitap text input
 entering 14
music, playing 48

MusicDJ™ 52
My friends 42

N

navigating menus 11
networks, selecting 18
night mode 45
notepad 33
notes 67–68
notification for events 16
number
 hiding 33
 my own 31

O

on if silent 52

P

passcodes
 Bluetooth 61
 code memo 71
passwords, Internet 58
phone language 13, 73
phone lock 71
phone overview 9

PhotoDJ™ 47
picture messages 37–39
picture sizes 45
pictures 46–47

 edit 47
 screen saver 46
 wallpaper 46

PIN code

 changing 70
 entering 6

PlayNow™ 50

profiles 68

PUK 70

R

recording
 calls 54
 sounds 54
 video clips 44
 voice commands 26–28
redialling 19
remote control 63
replacing covers 7
resetting phone 75

restricted dialling 31
ringtones 51–52
roaming 18

S

safety guidelines 84
saving
 from picture messages 38
 from text messages 35
screen 69
screen saver 46
security
 code memo 71
 Internet 59
 SIM card lock 70
self-portrait 44
sending
 appointments 66, 67
 business cards 33
 contacts 23
 melodies and ringtones 53
 notes 68
 pictures 47
 tasks 66, 67
 themes 55

settings for Java™ 58
setup wizard 6
shortcuts 13
SIM card
 copying to/from 24
 inserting 5
 lock 70
 unblocking 70
SIM contacts 21
SIM numbers 22
SMS *See* text messages 34
SOS *See* emergency numbers 20
sound
 directing 63
 transferring 63
sound recorder 54
speaker volume 18
speed dialling 25
standby screen 11
start-up screen 46, 69
status bar 11
stopwatch 68
streaming media 50
Style-Up™ *See* replacing covers 7
synchronizing 59–60

T

T9™ Text Input
 entering letters 14
tasks 67
templates
 for picture messages 39
 for text messages 36
text messages 34–36
themes 55
time, setting 65
timer 68
transferring sound 63
turning on/off
 Bluetooth 61
 infrared port 64
 key sound 52
 phone 6
 phone lock 71
 ringtones, melodies 51
 SIM lock protection 71
two voice lines 30

Index

U

unblocking

PIN 6

SIM card 70

V

vibrating alert 52

video clips 48

video recorder 43–45

VideoDJ™ 53

view events 16

voice answering 27–28

voice control 25–28

voice dialling 26–27

voice messages 39

voicemail 25

volume

changing 18

setting ringtone 52

vibrating alert 52

W

wallpaper 46

WAP *See* Internet 56

warranty 82

wizard

setup 6

writing

using multitap input 14

using T9™ Text Input 14

writing languages 14

Z

zoom 44