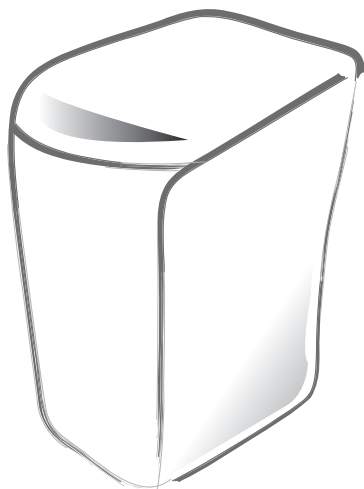




WASHING MACHINE

User's Manual

WA70R3 / WA80R3



- *Please read this manual before using and note how to use in the proper manner.
Please be careful of keeping the manual.
Otherwise, it should be bought separately.*
- *The User's Manual is for common use.
Make use of the User's Manual depending upon your washing machine model.*

FEATURES	2
SAFETY INSTRUCTIONS	3
DESCRIPTION OF PARTS	4
CHECKING BEFORE WASHING AND CARING FOR GARMENTS	5
CONTROL PANEL	6
HOW TO WASH AUTOMATICALLY DEPENDS ON THE LAUNDRY	7
MANUAL FUNCTIONS	9
INSTALLATION & MAINTENANCE	9
Environment.....	9
Levelling.....	9
Connecting the water supply hose.....	10
Assembling the rat protection panel.....	11
How to connect the drain hose	11
How to add the fabric softener	12
How to put the detergent in.....	12
Water supply connector filter	12
Cleaning the filter.	12
How to clean the pump filter	12
TROUBLESHOOTING	13
WASHING MACHINE WON'T WORK	13
SPECIFICATIONS	14

CODE NO.: DC68-01921F
(220V/50-60Hz)

FEATURES

■ CAS SYSTEM option

- CHILD LOCK FUNCTION
- AUTO RESTART

The power is turned on automatically after power failure.

- SAVING ENERGY

The ECO+ COURSE, it is a wash course to saving the energy reduces laundry time for frequent and soiled clothes.

■ DIGITAL CONTROL

Digital control operates with best washing course by sensing the washload like artificial intelligence.

■ TRANSPARENT WINDOW option

This Transparent Window is the new concept to solve the curiosity of users to see inside of washing machine while operation.

While operation, the laundry progress inside of washing machine can be checked by looking through the transparent window.

■ PULSATOR option

The Pulsator helps water and detergent to go through fabrics efficiently while providing both the powerful water action to clean larger and heavier clothes and the gentle water action to clean all delicates with less wear and tear on clothes.

■ WATERFALL FLOW

The Waterfall Flow injected from under the pulsator cascades with full force back into the tub, pushing down any clothes that float right under the water surface. It is this Waterfall Flow that enables this washing machine to effectively wash large and heavy items, such as bluejeans and blankets.

■ MAGIC FILTER option

This unique magic Filter ensures that all the lint inside the tub is captured for top quality filtering results to deliver consistently effective cleaning results.

■ SOFTENER DISPENSER option

The Softener Dispenser releases the fabric softener at the appropriate time when the last rinsing proceeds.

■ SUPER CLEAN option

SUPER CLEAN adjust the level of water by 5 steps so as to enhance detergent efficiency by adjusting the density of detergent to normal density.

■ CHILD-LOCK FUNCTION

This is a device to protect children from being accidentally hurt while playing with the washer.

How to start Child-Lock function:

- Press the “Power” button to go to an initial washing mode.
- By pressing “Start/Hold” button, you start washing and in case Child Lock function is needed during the laundry
- Press both the “WATER LEVEL” and “WASH” buttons in simultaneously and get the function started.
(Note: You cannot perform the function without the “Power” button on.)

To release the function of Child-Lock:

- In case the “Child-Lock” is programmed, press both the “WATER LEVEL” and “WASH” buttons in simultaneously.

SAFETY INSTRUCTIONS

Please note that the following precautions for safety intend to prevent unpredictable danger and damage by helping the proper use in safety.

When using hot water in washing, please make sure that the water should not exceed 50°C.

☞ Plastic parts may be deformed or damaged, and an electric shock or a fire may take place.

WARNING

There might be serious injury or fatal accident when you violate this instruction.

If the power supply cord or plug is damaged or loosened, do not use.

☞ An electric shock or a fire may take place.

Do not pull the cord off or touch it with moist hands.

☞ An electric shock or a fire may take place.

Do not bend the power supply cord by force or press it with heavy things.

☞ An electric shock or a fire may take place.

Do not install the washer nearby electric implement or don't put a candle light or cigarette light on the washer.

☞ A fire may take place.

Do not disassemble, repair or remodel it recklessly.

☞ When you need to repair it, please call service agent. An electric shock or a fire may take place.

During operation, do not put your hands or metal materials under the washer.

☞ You may be hurt by spinning board beneath the washer.

Stay away from the washer when the bottom of the washer sinks into the water.

☞ There might be an electric shock. Please wait until the water drains out completely.

Do not put laundry stained with gasoline, benzene, or alcohol in the washer, and keep the materials away from the washer.

☞ An explosion or a fire may take place.

During spinning, don't put your hand in the spinning tub.

☞ It may hurt your hands. If it does not stop within 15 seconds after you open the lid, call service agent immediately.

CAUTIONS

There might be a slight injury or damage when you violate this instruction.

Don't install it in the area with moisture or outdoor where it has rain or snow.

☞ An electric shock or a fire may take place.

Please unplug the power supply cord when you do not use it.

☞ An electric shock or a fire may take place.

If there is dust or water on the power supply plug and its connected part, please remove it completely.

☞ An electric shock or a fire may take place.

Do not make your kids look into the inside of the washer.

☞ If your kid falls into the washer, his life could be in danger.

Ventilate immediately without touching the power plug if gas is leaking.

☞ An electric shock or a fire may take place if it catches flame.

If the washer makes strange noise, smell or smoke, unplug it promptly and call service agent.

☞ An electric shock or a fire may take place.

When cleaning, don't spray water to the parts of the washer directly.

☞ It may make it's life span shorten.

Also an electric shock or fire may take place.

Don't use several appliances together with an outlet.


☞ A fire may take place due to unusual heat.

Don't press the button with an awl or pin.

☞ An electric shock or a fire may take place.

Use the new hose-sets and old hose-sets should not be reused.

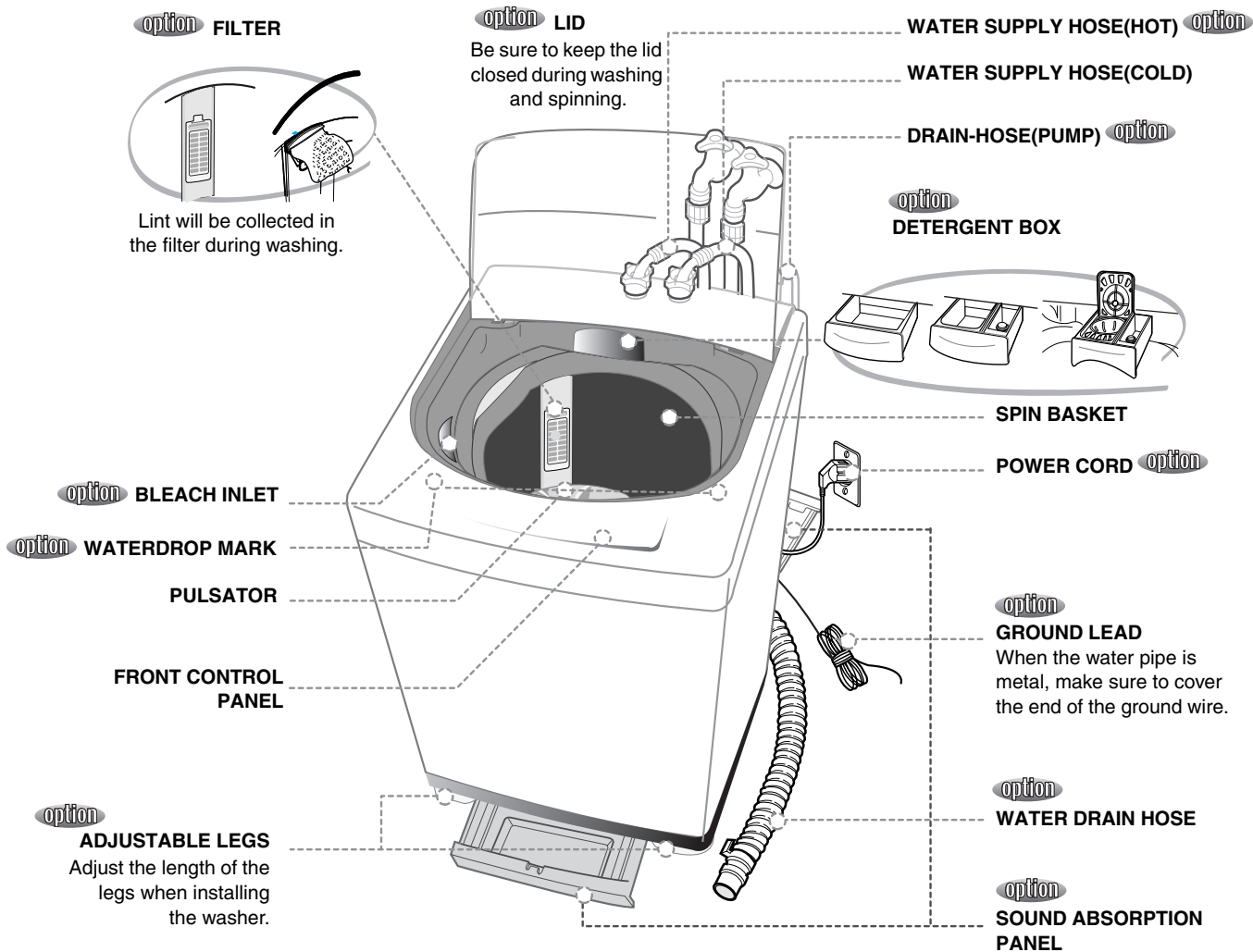
If the damage is found on the current cord in use, it should be replaced by manufacturer, service center or authorized person in order to avoid the risk.

Connect the grounding wire to the shell plate, and bury it under at least 25cm of earth:alternatively, connect the ground wire to the appropriate pin on a properly grounded power receptacle. Never connect the wire to a telephone line, lightning rod, or gas pipe. 

DESCRIPTION OF PARTS

The User's Manual is for common use.

Make use of the User's Manual depending upon your washing machine model.



CHECKING BEFORE WASHING AND CARING FOR GARMENTS

Must follow the checkpoints in order to avoid machine problems or damages on garments.

- ☞ If the below problems are caused by customer's faults, separate service fee will be charged.

Checkpoints Before Starting Washing

Check if the clothes are bleaching or not.

- ☞ Add liquid detergent to a white towel and the garment where you can't notice well. Then, rub together strongly. Check if the color transferred to the towel.
- ☞ Be careful for scarves and imported clothes since they are easily discoloring.
- ☞ Check for stains or partial dirt.
- ☞ If stains are found, use the towel wet with detergents to rub on in a single direction.
- ☞ Before washing, the sleeves, collar, dress hem and pockets are pre-treated by brushing with detergents.

The wrinkle-processed clothes made of wool are specially treated by fixing them with threads before washing. The threads shall be removed after the clothes are dried.

Not washable laundry

Clothes those are easily transformable even by soaking in water.

- ☞ Even by soaking in water, neckties, brassieres, jackets, suits and coats can be easily transformed like shrinking and discoloring on the garment surfaces because they are mostly made of rayon, polynosic, cuff and their blend fabrics.
- ☞ The wrinkle-processed, embossed, or resin processed products are easy to transform even by soaking in water.
- ☞ Easily discoloring products made of cotton and wool, wrinkled silk, leather products, leather accessory, leather ornamented clothes and its accessory.
- ☞ Don't wash those clothes without handling guideline or material indication tag.

About Detergent

- ☞ When detergents are not dissolving well, use warm water (about 40°C) to dissolve the detergent.

Caution

- ☞ Use an appropriate amount.
- ☞ Even if excess amount of detergent is used, there is not much difference in washing result. It may cause damages to the garments because rinsing is not enough.

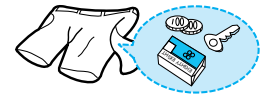
- ☞ The bleaching agent may cause damages to garments since it is strong alkali.
- ☞ Do sufficient rinsing because the powder detergent is easily remained on the garments causing bad odors.
- ☞ If too much detergent is used or cold water is used, it doesn't dissolve completely and remain on the garments, hose or spin basket, causing contamination on clothes.
- ☞ In case of reserved washing, detergents must be put in the detergent box. If the powder detergents are spread on laundry directly, it may cause discoloration.

CARING FOR CLOTHES BEFORE WASHING

- ☞ Must follow the checkpoints in order to avoid machine problems or damages on garments.
- ☞ If the below problems are caused by customer's faults, separate service fee will be charged.

Take out personal belongings from pockets.

- ☞ Caution, Check the pockets! Hairpins and coins cause damages to clothes and washing machine. They make noise and problems to the machine. Must check the pocket.



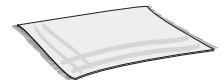
If pants zippers are open while washing, the spin basket may be damaged. The zipper should be closed and fixed with a string before washing.

- ☞ If blue jeans and working uniform's zippers or hooks are made of steel, they must be closed before washing.
- ☞ Wash winter jumpers, working uniforms, bed cover sheets, and blue jeans separately.
- ☞ Fold clothes well into the spin basket. Must remove the curtain hooks before washing.
- ☞ Turn inside out the button decorated and embroidered clothes before washing.
- ☞ Be careful those metal decorations because they cause heavy damages while washing.
- ☞ The long stringed clothes may tangle with other clothes. Must fix the strings before washing.
- ☞ The metal from brassieres may stick out and damage other clothes or the spin basket. Must use the commercial laundry net for washing brassieres. (Use a laundry net of fine mesh.)



Waterproof clothes (Ski Wear, Diaper Covers, Footboards) are not allowed for washing.

- ☞ The waterproof sheet, clothes, and non water permeable fabrics shouldn't be washed, rinsed, or put in a spin basket. The laundry may pop out and cause severe vibration so that a person may get damaged and the machine, wall, and floor may break out in addition to clothes. (Examples are diaper cover, waterproof wear, raincoat, umbrella cover, ski wears, car cover sheet, and sleeping bags.)



Cautions During Spinning

- ☞ Spinning of regular garments
 - The water from garments is drained out through the spin basket holes.
- ☞ Spinning of waterproof clothes and fabrics
 - Even if the spin basket spins, water can't drain out from the waterproof clothes and fabrics. Therefore, water gathers to one side and this cause a severe vibration. If the spin basket spins at a high speed, water still can't drain out from the waterproof clothes and fabrics. As a result, garments move up and pop out with a big vibration.

Shake the dirt or soils from clothes.

- ☞ Soil and sands may rub delicate garments to cause damages and the washing result may be unsatisfactory.



For protection of baby skin

- ☞ Wash diapers and baby wears (baby clothes, baby towels etc) separately. Dirt may get to baby's clothes from adult's clothes if washing them together.

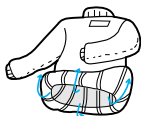
Do pre-washing for white socks, sleeves, and collars before the main washing.

- ☞ Use powder and liquid detergents.
- ☞ Don't use soap. It may leave dirt to the spin basket.



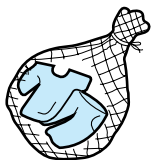
Turn inside out for those nappy clothes before washing.

- ☞ If clothes have too much foreign matter, separate them for washing. Other clothes may pick up those dirty matters (dirt, thread).
- ☞ Wash black colored clothes and cotton towels separately. If they are washed together, towels may pick up dirty matters. Check before washing.



Cashmilon and those garments having big volume and lightweight (eg. lace-decorated clothes, lingerie, nylon stocking, synthetic fabrics etc.) may rise and cause damages to the clothes and problems to the machine. Use the laundry net or wash them separately.

- ☞ Must put those long stringed clothes, lace-worked clothes, bed cover sheet, wool clothes into a laundry net before washing.
- ☞ Put delicate clothes in the laundry net.
- ☞ Use only those commercial laundry net for washing.



Curtains, floating garments or blue jeans shall be pressed not to float on the water.

- ☞ If they are floated on the water, press Start/Hold button to stop and press them to sock in the water. If the washing goes on with clothes floating on the water, it may cause damages to the clothes and the washing machine as well as unsatisfactory washing result.

CONTROL PANEL

For more details, see control panel of your washing machine.

■ POWER BUTTON

Press this button once to operate. Press once again to turn the power off.



■ START/HOLD BUTTON

Use to pause and restart the operation. To change the washing procedure during operation, press this button to stop, and once again to restart after changing the procedure.



■ DELAY START BUTTON

Press this button when delay start washing is needed.



■ COURSE SELECT BUTTON

With every press of this button, the washing course changes;

DIGITAL → BLANKET → ECO+ → SPEEDY → WOOL → DIGITAL



■ SUPER CLEAN BUTTON

Press the button once to perform SUPER CLEAN. Press the button again to perform normal cleaning.



■ FUNCTION SELECT BUTTON

With every press of this button, the function changes;

WASH&WASH+&RINSE&SPIN → SOAK&WASH&WASH+&RINSE&SPIN → SOAK&WASH&RINSE&SPIN → WASH → RINSE → SPIN → WASH&RINSE → RINSE&SPIN → WASH&RINSE&SPIN.



■ WATER LEVEL SELECT BUTTON

According to the washload, select the water level; MEDIUM → HIGH → MAXIMUM → EXTRA LOW → LOW



■ WATER SUPPLY SELECT BUTTON option

As you press this button, the type of water is selected as follows.

COLD → COLD + HOT → HOT → COLD



■ REMAINING TIME INDICATOR LIGHT

The indicator light shows the remaining time (in minutes) of each wash cycle. At the end of the cycle, the power automatically switches off.

HOW TO WASH AUTOMATICALLY DEPENDS ON THE LAUNDRY

Before starting washing, check the following;

- Connect the water supply hose to the water tap. Leave a tap open. Plug the power cord in. Make sure to lay down the drain hose.

SPECIAL NOTES!

Automatic Sensing Function

- At every course (except, wool course) the amount of laundry is automatically sensed and then appropriate water level, washing time, rinsing cycle, and spinning time are automatically selected for automatic washing.
- After the power is on, a course is selected and Start/Hold button is pressed. Then, the washing board starts spinning without water. This action senses how much laundry is in the washing basket, not a machine problem. After this sensing process, water supplies automatically.

Adding Detergent and Softener

- It senses the amount of laundry and indicates the water level and amount of detergent. Then, it starts water supply right away.
- During the water supply, it is possible to open the detergent box and add detergent. However, it is better to press Start/Hold button to stop water supply and add detergent. Close the lid and press Start/Hold button again. This way is much more convenient.
- If the softener is inserted in the softener dispenser, it automatically adds in at the last rinsing cycle.

Put the laundry into the washer and add detergent, too.

- Be careful not to overload. Use right detergent for the fabrics you are washing.



- If the lid is open while running, the washing machine is stopped automatically for safety. (Except, water supply continues while the lid is open.)
- When hot water is selected, both cold and hot water are supplied for the first 20 seconds in order to protect the clothes.
- Possible to control the washing time, rinsing cycle, and spinning time at every course during the washing.

■ DIGITAL COURSE

Selects the best washing course automatically.



1. Press the POWER Button to "ON".
2. Press the START/HOLD button.

Water level is selected automatically. Washing rinsing, and spinning follow. If you want to pause, press the START/HOLD button again. You can change the course when paused.

3. Close the lid.

■ BLANKET COURSE

(Big volume laundry like blanket and bed cover sheets)



1. Press the power button to "ON".
2. Press the course select button once.
3. Press the START/HOLD button.

Water level is selected automatically. Washing, rinsing, and spinning follow. If you want to pause, press the START/HOLD button again. You can change the course when paused.

4. Close the lid.

- Fold those big volume laundry (blanket and bed cover sheets) in the following way before adding into the spin basket.



- Do not wash the electric blanket and carpets.
- Get a laundry net for those light and big volume laundry (eg. Cashmeres) because they might rise in the water and get damaged.

■ ECO+ COURSE option



1. Press the power button to "ON".
2. Press the course select button two times.
3. Press the START/HOLD button.

Water level is selected automatically. Washing, rinsing, and spinning follow. If you want to pause, press the START/HOLD button again. You can change the course when paused.

4. Close the lid.

■ SPEEDY COURSE

If you want to wash those frequently used towels or less dirty laundry time.



Because washing is speedy, it is good for light or less stained laundry.

1. Press the power button to "ON".
2. Press the course select button three times.
3. Press the START/HOLD button.

Water level is selected automatically. Washing, rinsing, and spinning follow. If you want to pause, press the START/HOLD button again. You can change the course when paused.

4. Close the lid.

■ WOOL COURSE

Washable sweater, cardigan, delicate clothes etc.



1. Press the power button to "ON".
2. Press the course select four times.
3. Press the START/HOLD button.

Washing, rinsing, and spinning follow. If you want to pause, press the START/HOLD button again. You can change the course when paused.

4. Close the lid.

CAUTION...

- Do not use water above 30°C For WOOL washing.
- Refer to the tag attached on the clothes for washing information.

- Fasten buttons and turn inside out before washing.
- Use the detergent indicated in the laundry.
- When the degree of dirt is extreme, soak the laundry in warm water for about 10 minutes before pressing the WOOL course button in order to enhance washing efficiency.

■ DELAY START

How to reserve washing?

Select this course when you have to go out or do something else.



1. Press the power button to "ON".
2. Press the course select button.
3. Press the DELAY START button once.

*You may change the delay start time with use the DELAY START button.
(from 3 hours to 18 hours)*

4. Press the START/HOLD button and put the proper amount of detergent into tub.
5. Close the lid.

The washing finishes by the time you reserved.

Add detergent and softener in proportion to the water level. Then, close the lid.

- Must add the detergent in the detergent box.
- If the detergent is spread on the laundry directly, some clothes may get discolored as the start delays.
- If the Delay Start needs to be canceled, press the power button.
- The reserved finish time may be changed depends on the water pressure.

■ SUPER CLEAN option

Use for cleaner washing.



1. Press the power button to "ON".
2. Press the SUPER CLEAN button.
3. Press the START/HOLD button and put the proper amount of detergent into tub.
 - Water level is selected automatically.
 - Water level is only selected MAXIMUM~MEDIUM.
4. Close the lid.
 - The washing finishes by the time you reserved.

MANUAL FUNCTIONS

Each washing course changes manually.

Ex) If you want to wash in the speedy course : Power - Select speedy course - Wash - Start/Hold button



Blanket course includes SOAK Function basically.

<p>once</p>	<p>WASH+ FUNCTION (If you want to add more wash-time, use to this wash+ function) Press the POWER button. Select the course(Press the course button). → BLANKET, ECO+, SPEEDY, WOOL Press the FUNCTION button once. Press the START/HOLD button once. Water level is selected automatically. Washing,rinsing, and spinning follow.</p>
<p>twice</p>	<p>SOAK & WASH+ FUNCTION Press the POWER button. Select the course(Press the course button). → BLANKET, ECO+, SPEEDY, WOOL Press the FUNCTION button twice. Press the START/HOLD button once. Water level is selected automatically. Soaking, Washing, rinsing, and spinning follow.</p>
<p>three times</p>	<p>SOAK FUNCTION Press the POWER button. Select the course(Press the course button). → BLANKET, ECO+, SPEEDY, WOOL Press the FUNCTION button three times. Press the START/HOLD button once. Water level is selected automatically. Soaking, Washing, rinsing, and spinning follow.</p>
<p>four times</p>	<p>WASH ONLY Press the POWER button. Press the FUNCTION SELECT button four times. Press the START/HOLD button once. When the FUNCTION button is pressed during washing, the wash time can be changed to between 3 and 25 minutes in duration.</p>
<p>five times</p>	<p>RINSE ONLY Press the FUNCTION button five times. Press the START/HOLD button once. When the FUNCTION button is pressed during rinsing, the rinse times can be changed to between 1 to 5 times in duration.</p>
<p>six times</p>	<p>SPIN ONLY Press the FUNCTION button six times. Press the START/HOLD button once. When the FUNCTION button is pressed during spinning, the spin time can be changed to from 1 to 7 minutes.</p>
<p>seven times</p>	<p>WASH AND RINSE Press the FUNCTION button seven times. Press the START/HOLD button once. When the FUNCTION button is pressed during working, the rinse times can be changed to between 1 to 5 times in duration.</p>
<p>eight times</p>	<p>RINSE AND SPIN Press the FUNCTION button eight times. Press the START/HOLD button once. Rinsing and spin drying follow. When the FUNCTION button is pressed during working, the rinse times can be changed to between 1 and 5 times in duration.</p>

INSTALLATION & MAINTENANCE

The User's Manual is for common use.

Make use of the User's Manual depending upon your washing machine model.

■ ENVIRONMENT

Leave some space

Maintain at least 10cm between the washer and the wall.

Place the washer on a sturdy flat surface.

If the washer is placed on an uneven or weak surface, noise or vibration occurs. (Allowable is 1°)

Adjust the legs for even placement.

Never install the washer near water.

Do not place the washer in steamy rooms or where the washer is directly exposed to rain. Moisture may destroy the electrical insulation causing an electrical shock hazard.

Avoid direct sunlight or heaters.

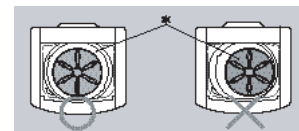
As plastic an electrical components are affected by direct heat, never place the washer near furnaces, boilers, etc. Do not place under direct sunlight.

■ LEVELLING

- If the washer is not leveled with the ground, it makes the machine tremble more or be out of order. So, make sure that the washer is leveled properly.

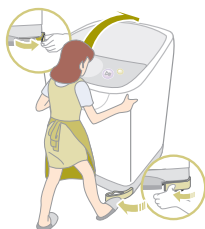
SEE IF THE MACHINE IS PLACED LEVEL BY CHECKING THE POSITION OF THE WASHING TUB.

- Open the lid of the machine, pour water into the tub up to the level just below the pulsator, and adjust the legs so that the pulsator is positioned at the center of the water as shown in the figure.
- Place the machine more than 10cm away from the wall.
- Adjust the legs on feet



ADJUSTMENT THE HEIGHT OF THE MACHINE option

Adjust the legs to level the washer
Be careful not to put in your hand under the legs.



Pull the handles located at the right and left of the front side and slide off.

Adjust the height of the machine upward or downward.

When the adjustment is finished, push the handles to fix the adjusting legs.

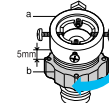
Waterdrop mark	Cause	How to level
	The front part is lower	Level it by adjustable legs.
	The back part is lower	Adjust the height by using the adjustable rubber or prop at the back.
	The left part is lower	Adjust the left part by using the adjustable legs at the front and the adjustable rubber at the back.
	The right part is lower	Adjust the right part of the washer by using the adjustable leg at the front and the adjustable rubber at the back.

■ CONNECTING THE WATER SUPPLY HOSE

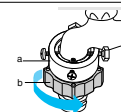
1. Remove the adaptor from the water supply hose.



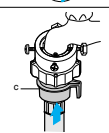
2. First, using a "+" type screw driver, loosen the four screws on the adaptor. Next, take the adaptor and turn part(b) following the arrow for gap about 5mm between them.



3. Connect adaptor to the water tap by tightening the screws firmly. Then, turn part(b) following the arrow and put (a) and (b) together.



4. Connect the water supply hose to the adaptor. Pull down the part (c) of the water supply hose. When the part (c) is released, the hose is automatically connected to the adaptor making a 'click' sound.



5. Connect the other end of the water supply hose to the inlet water valve at the back of the washer. option Screw the hose clockwise all the way in.

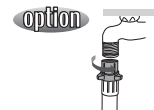


- 5-1. Connect the other end of the water supply hose to the inlet water valve at the top of the washer. option



Screw the hose clockwise all the way in.

- ☞ If the water tap is a screw type, assemble a water supply hose that fits to the tap as shown. option



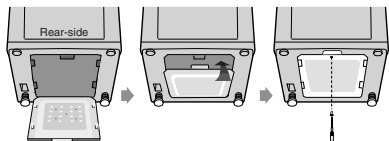
After completing connection, if water leaks from the hose, then repeat the same steps.

Use the most conventional type of faucet for water supply.

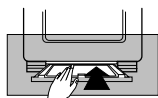
In case the faucet is square or too big, remove the spacing ring before inserting the faucet into the adaptor.

■ ASSEMBLING THE RAT PROTECTION PANEL option

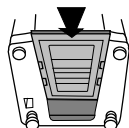
Tilt the washer a little and lift up the panel until it clicks, finally fix the panel with screw to the base as shown in the figure.



1. Insert the sound absorbing panel to the assembling hole on back side to the end



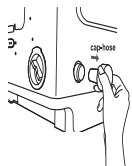
2. If you have difficulty inserting the panel lift up the washer a little and insert it.



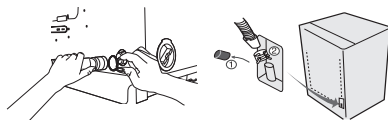
■ HOW TO CONNECT THE DRAIN HOSE option

☞ IN CASE OF PUMP-DRAINED WASHER

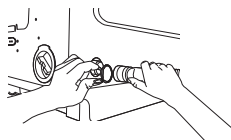
Take out the cap-hose and connect the outlet-hose.



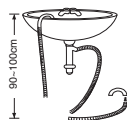
Be sure to join tightly the drain hose into the drain-outlet on the back of the machine.



Be sure to join tightly the drain hose into the drain-outlet on the side of the machine.

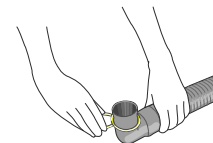


Install the drain hose in the position of about 90~100cm above the ground.

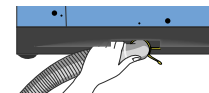


☞ IN CASE OF GENERAL WASHER

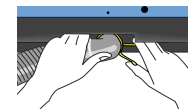
1. After pressing the joint ring, insert to the drain hose.



2. After directing the drain hose to a drain, join to the drain-outlet of the washing machine.

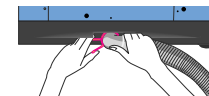


3. Be sure to join them tightly by pressing the joint ring and pushing it into the drain-outlet.
 - The length of drain hose is adjustable so that you can extend the length appropriately.



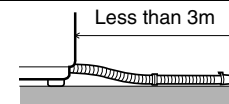
HOW TO CHANGE THE DRAIN HOSE DIRECTION

- The handle of joint ring is pressed to pull out the drain hose. Change the direction of the drain hose and follow the above guideline again.

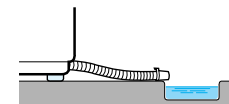


CAUTIONS WHEN INSERTING THE DRAIN HOSE

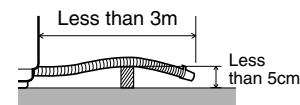
1. Don't exceed more than 3m when the drain hose is used by connecting with other hoses.



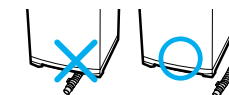
2. Be careful to drain water out at the end of the drain hose.



3. The doorsill shouldn't be more than 5cm.

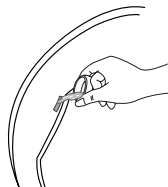


4. Don't install the drain hose underneath the wash machine.



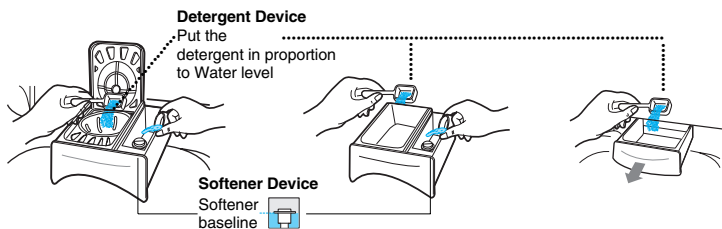
■ HOW TO ADD THE FABRIC SOFTENER option

- When a proper amount (one time does) of fabric softener is stored in the softener inlet, it is automatically put in at the last rinsing cycle.
- Do not use detergent, bleach or starch into the Softener Inlet.
- Using too much softener may produce unsatisfactory results.
- Do not open the lid during the Spin Dry cycle. If added too early, its effectiveness will decrease.
- Do not leave the softener into the Softener Dispenser for a long time. Because softener became stiff.



■ HOW TO PUT THE DETERGENT IN option

1. Open the detergent box by pulling in the direction of the arrow as shown in the figure and then put the powder detergent in the detergent box.
2. Put in one-time amount of detergent evenly so the detergent may not brim over the box.



CAUTION : If softener is stored over the above base line, it may flow down at any time.

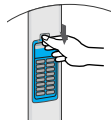
■ WATER SUPPLY CONNECTOR FILTER

<ol style="list-style-type: none"> 1. Pull out the filter and wash well. 	<ol style="list-style-type: none"> 2. Pull in the filter and connect the hose to the inlet water valve tightly. 	<ol style="list-style-type: none"> 3. Check if there is a leakage. Note to tighten up the connector.
---	--	---

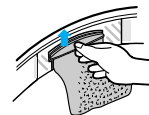
■ CLEANING THE FILTER option

Clean the filter net often to keep the washer clean.

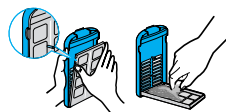
1. Push the upper part of the Magic filter and pull in.



1. Push up and pull out the filter net.



2. Open the cover as shown in the figure.



2. Remove the collected lint from the filter net.



3. Clean the Magic filter.



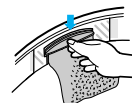
3. Clean the filter net.



4. Close the cover and insert the lower part of the filter in the basket first and then push the filter with "click" sound.

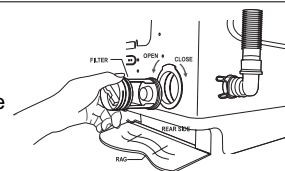


4. Pull down the filter net.



■ HOW TO CLEAN THE PUMP FILTER option

1. Place a rag under the washer filter not to wet the floor.
2. Rotate the filter counterclockwise and pull out the filter.
3. Remove dirt and rotate the filter clockwise until it locks in position.



TROUBLESHOOTING

➤ Washing machine won't work

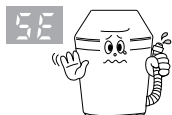
- Is the water tap opened?
- Is the washer plugged in?
- Is the power cut off?
- Is there enough water?



➤ Water does not drain

- Is the drain hose down? (No pump)
- Is the drain hose frozen?
- Is the drain hose clogged?

If the water does not drain in 15 minutes, a buzzer will sound, and the remaining time indicator will show "5E".



➤ Water is not supplied

- Is the water tap opened?
- Is the water cut off?
- Is the water supply hose or hose connection clogged?

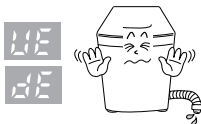
Is the water tap frozen?

If water is not supplied in 1 hour, a buzzer will sound, and the remaining time indicator will show "4E".



➤ Spinning does not work

- Is the laundry spread out evenly in the washer?
- Is the washer set on a sturdy flat surface?



➤ Water is overflowed

- Restart after spinning.
- If the error sign still indicates, call agency.



WASHING MACHINE WON'T WORK?

The power is cut off.

- Check 1>** Is the electric voltage normal?
- Check 2>** Is the washer plugged in? Plug in the electric cord.
 - Water does not drain.
- Check 3>** Is the drain hose down? Put the drain hose down.
- Check 4>** Is the drain hose folded? Unfold the drain hose.
- Check 5>** Is the drain hose outlet clogged? Remove the waste cleanly.

Washing machine won't work.

- Check 1>** Is the washer lid open?
 - Close the lid.
- Check 2>** Is the Hold button on?
 - Press the Start/Hold button one more time and check if the washer starts.
- Check 3>** Is enough water filled to the water level?
 - If the water pressure is low, it takes a long time to start washing.
- Check 4>** Is the faucet closed?
 - Open the faucet to supply water.

If the drain hose and spin basket are frozen, do as follows.

- Add hot water to the frozen water tap and remove the drain hose. Soak into hot water.
- Pour hot water into the spin basket for about 10 minutes.
- Put a hot water towel on the drain hose connector.
- If the drain hose defrosts, connect again and check for proper water draining.

The water drains out immediately.

- The drain is clogged with coins or pins. The drain hose is hung over the drain hose hook. Half fill the spin basket with water and try for spinning again.

WASHING MACHINE WON'T WORK? (Continue)

The water leaks at the water supply hose connector.

- Check 1>** If the faucet connecting part is loose, water may leak.
 → Repeat the assembling steps again.
 (Refer to “Connecting the water supply hose”)
- Check 2>** Check if the rubber packing of water supply hose is in the right position.
 → Screw tightly again.
- Check 3>** Is the water supply hose folded?
 → Unfold the hose.
- Check 4>** If the water supply is too strong, water may leak.
 → Close the faucet a little.
- Check 5>** Is water leaking from the faucet itself?
 → Fix the faucet. Water is not supplied.
- Check 6>** Did you press the Start/Hold button after selecting the water supply?
 → If the Start/Hold button is not pressed, water is not supplied.
 Press the Start/Hold button.
- Check 7>** Is the faucet closed?
 → Turn on the faucet.
- Check 8>** Is the filter net at the water supply hose connector clogged with dirty matters?
 → Clean the filter net by brushing with a toothbrush.
- Check 9>** Is the water supply cut off?
 → If the water supply is suspended, turn off the faucet and power off.

Spinning makes loud noises and vibrations.

- Check 1>** Check if the laundry is spread evenly in the washer.
 → Spread out the laundry evenly and start again.
- Check 2>** Check if the washing machine levels on a sturdy flat floor.
 → Set the machine at level.
- Check 3>** Is the handle for leveling legs loose?
 → Adjust the legs on the feet for leveling.
- Check 4>** Is around the washing machine filled with unnecessary stuffs?
 → Remove those unnecessary things away from the wash machine.

IN CASE THE NEED FOR SERVICING ARISES.

If any problem occurs with your products, do not hesitate to call any nearby.
 Name, address, telephone number is required.

SAMSUNG ELECTRONICS CO.,LTD 416, MAETAN-3DONG, SUWON, KOREA



SPECIFICATIONS

WA70R3

NORMAL CAPACITY	WASHING	5.0 kg (DRY LAUNDRY)	STANDARD WATER LEVEL	MAXIMUM	55 /
	SPINNING	5.0 kg (DRY LAUNDRY)		HIGH	49 /
DIMENSIONS (mm)		W540xD560xH850 (L) W540xD560xH910 (H)		MEDIUM	43 /
WEIGHT		31 kg		LOW	35 /
WATER PRESSURE		0.05-0.78 MPa (0.5 ~ 8.0 kg • f/cm ²)	E/LOW	27 /	
WASHING TYPE		Stirring Type	WATER USAGE		140 /
MOTOR INPUT		330W	POWER SUPPLY		220V/50-60Hz
MOTOR MAX INPUT	WASHING	330W	PLUSATOR ROTATING SPEED		113 rpm
	SPINNING	246W	SPINNING TUB ROTATING SPEED		660 rpm
MOTOR MAX INPUT	WASHING	330W	RATING TIME	WASHING	Continue
	SPINNING			SPINNING	15 Minutes

For operating VOLTAGE and FREQUENCY, see the LABEL-RATING on the back of washing machine.

WA80R3

NORMAL CAPACITY	WASHING	6.0 kg (DRY LAUNDRY)	STANDARD WATER LEVEL	MAXIMUM	55 /
	SPINNING	6.0 kg (DRY LAUNDRY)		HIGH	49 /
DIMENSIONS (mm)		W540xD560xH850 (L) W540xD560xH910 (H)		MEDIUM	43 /
WEIGHT		31 kg		LOW	35 /
WATER PRESSURE		0.05-0.78 MPa (0.5 ~ 8.0 kg • f/cm ²)	E/LOW	27 /	
WASHING TYPE		Stirring Type	WATER USAGE		140 /
MOTOR INPUT		330W	POWER SUPPLY		220V/50-60Hz
MOTOR MAX INPUT	WASHING	330W	PLUSATOR ROTATING SPEED		113 rpm
	SPINNING	246W	SPINNING TUB ROTATING SPEED		660 rpm
MOTOR MAX INPUT	WASHING	330W	RATING TIME	WASHING	Continue
	SPINNING			SPINNING	15 Minutes

For operating VOLTAGE and FREQUENCY, see the LABEL-RATING on the back of washing machine.