

**PARTS LIST
LISTA DE PIEZAS**



Quickie® Turbo 60



TARGET®

Better Products, Better Solutions

Diamant Boart Group

17400 West 119th Street
Olathe, Kansas 66061, USA

Customer Service 800-288-5040
Corporate Office 913-928-1000
Customer Service FAX 800-825-0028
Corporate Office FAX 913-438-7951
International FAX 913-438-7938
Internet www.targetblue.com

0A7860

© Copyright, February 27, 2002, Diamant Boart, Inc.
Printed in U.S.A.

SAFETY FIRST!!

WARNINGS

WARNING: FAILURE TO COMPLY WITH THESE WARNINGS AND INSTRUCTIONS COULD RESULT IN DEATH OR SERIOUS INJURY.



Each machine is supplied with an operating instruction manual. Operators and maintenance people of this equipment must read and be familiar with the safety warnings in the operation manual. Failure to obey the warnings may result in serious injury or death. Follow instructions strictly to ensure long service in normal operation. If you do not have an operator's manual (P/N 0A7844), call TOLL FREE 1-800-288-5040.



Read the entire operator's manual before operating this machine. Understand all the warnings, instructions and controls. If you do not have an operator's manual (P/N 0A7844), call TOLL FREE 1-800-288-5040.



The manufacturer accepts no responsibility caused by unsuitable use or modifications.



For repairs and service parts, contact you authorized Target dealer.



This saw was designed for certain applications only DO NOT modify this saw or use for any application other than for which it was designed. If you have any questions relative to its application, DO NOT use the saw until you have contacted Diamant Boart, Inc. and we have advised you.

Diamant Boart, Inc.
17400 West 119th Street
Olathe, Kansas 66061
1-800-288-5040

¡SEGURIDAD ANTE TODO!



ADVERTENCIAS



ADVERTENCIA: EL NO RESPETAR ESTAS ADVERTENCIAS E INSTRUCCIONES DE OPERACION PUEDE PROVOCAR GRAVES LESIONES O LA MUERTE.



Cada máquina se suministra con un manual de instrucciones de operación. Los operadores y los mecánicos de este equipo deben leer y familiarizarse con las advertencias de seguridad dadas en este manual. El no respetar las advertencias puede provocar graves lesiones o la muerte. Siga las instrucciones al pie de la letra para asegurar una larga vida de servicio durante operación normal. Si no tiene un manual del operador (N/P 0A7844), llame a su concesionario Target más cercano. Si se necesitan ejemplares adicionales, llamar SIN CARGO al 1-800-288-5040.



Lea todo este manual y familiarícese con el funcionamiento de la máquina antes de ponerla en marcha. Entienda todas las advertencias, instrucciones y controles. Si no tiene un manual del operador (N/P 0A7844), llame a su concesionario Target más cercano. Si se necesitan ejemplares adicionales, llamar SIN CARGO al 1-800-288-5040.



El fabricante no se hace responsable del uso o modificaciones indebidas!



Para reparaciones y piezas de repuesto, póngase en contacto con el concesionario DB/T autorizado.



Esta sierra fue diseñada para ciertas aplicaciones solamente. **NO** la modifique ni utilice para ninguna otra aplicación salvo aquéllas para las cuales fue diseñada. En caso de dudas respecto a su aplicación, **NO** use la sierra sin antes haber consultado por escrito a Diamant Boart, Inc. y haber recibido nuestras indicaciones.

Diamant Boart, Inc.
17400 West 119th Street
Olathe, Kansas 66061
1-800-288-5040

Figure 1 – Starter & Ignition Assembly

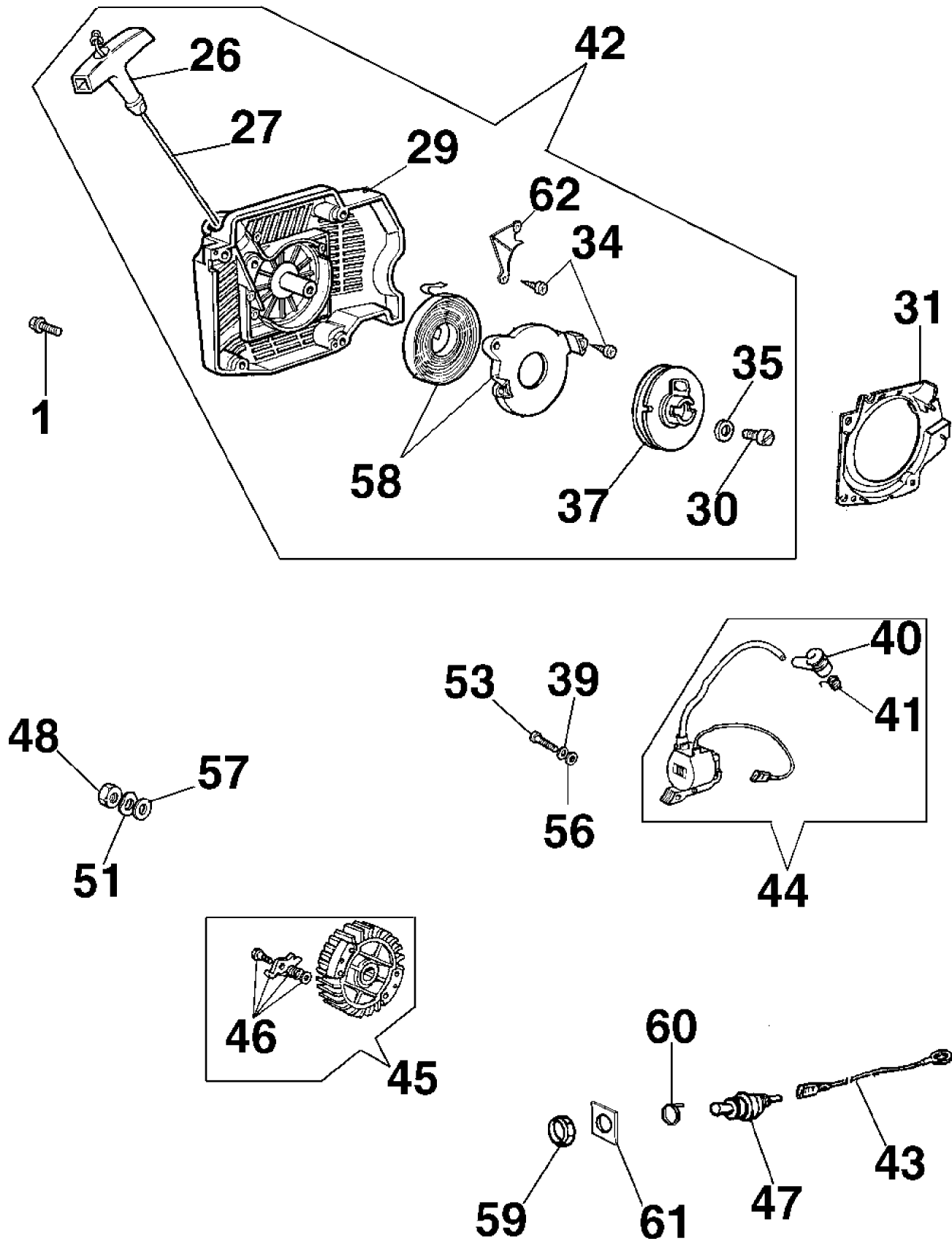


Figure 1 – Starter & Ignition Assembly

Loc.	P/N	Description	Qty	Level
1	187438	Screw, Soc Wash Hd M5 x 14mm	4	A
26	187431	Handle	1	C
27	168723	Rope, 4mm x 1.1m	1	A
29	192170	Starter Case - Blue	1	C
30	187435	Screw, Pan Hd M6 x 12mm	1	C
31	192171	Cover, Dust	1	C
34	168335	Screw, AF M3.5x13	4	B
35	187433	Washer	1	C
37	187440	Pulley	1	B
39	168337	Washer	2	A
40	168600	Boot, Spark Plug	1	D
41	168601	Spring	1	D
42	192174	Starter Assy - Blue	1	B
43	187443	Wire, Ground	1	D
44	192175	Ignition Module	1	B
45	192176	Flywheel Assy	1	C
46	187446	Pawl Kit	1	C
47	168599	Switch	1	C
48	187448	Nut, M8	1	C
51	187439	Washer, Wave M8	1	B
53	187441	Screw, Soc Hd M4 x 20mm	2	C
56	187449	Washer, Flat M4	2	C
57	168474	Washer, Flat M8	1	C
58	187451	Spring w/ Case	1	B
59	168469	Nut, Special	1	D
60	187447	Spade, Ground	1	D
61	168346	Plate On/Off	1	D
62	192126	Cover, Rope	1	C

Items Not Shown

Loc.	P/N	Description	Qty	Level
-	192000	Scrench, Turbo Quickie	1	A
-	192001	Wrench, Allen 4 mm	1	A

Level Key

- A – Commonly Replaced / Maintained Components (i.e. Air Filters, V-belts)
- B – "A" Level Dealer Items (i.e. Carburetors, Ignition Modules, Cylinder Assemblies, Flanges)
- C – Slow Moving Components (i.e. Filter Covers, Mufflers, Bushings, Fasteners)
- D – Service Parts / Non-Moving Yet Available (i.e. Crank Case Assemblies, Rear Handle Covers)

Figure 2 – Power Assembly

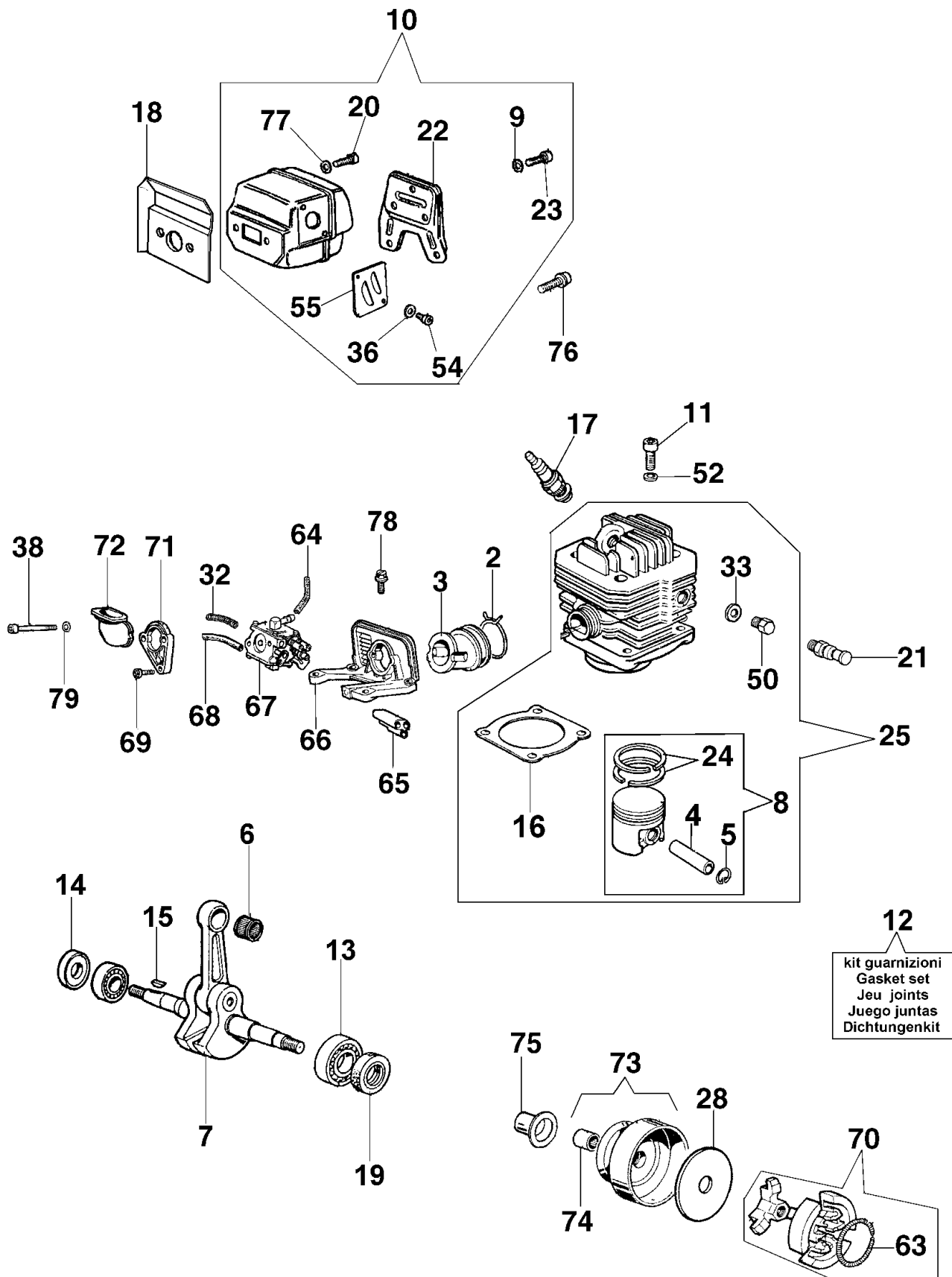


Figure 2 – Power Assembly

Loc.	P/N	Description	Qty	Level
2	187452	Snap Ring	1	C
3	192155	Manifold	1	C
4	192156	Piston Pin	1	C
5	168420	Snap Ring	2	C
6	192157	Bearing, WP	1	C
7	192158	Crankshaft	1	C
8	192159	Piston, Complete Ø48	1	C
9	168483	Washer	3	D
10	192160	Muffler, Complete	1	C
11	187459	Screw, Soc Hd M6 x 25mm	4	C
12	192161	Gasket Set	1	A
13	168484	Bearing	2	C
14	187461	Sealing Ring	1	C
15	187462	Key - Flywheel	1	C
16	192163	Gasket - Cylinder	1	A
17	015080	Spark Plug - RCJ7Y	1	A
18	192164	Gasket	1	A
19	192165	Sealing Ring	1	C
20	187465	Screw, Soc Hd M5 x 18mm	2	C
21	187466	Decompressor	1	B
22	192166	Bracket, Muffler	1	C
23	187468	Screw, Soc Hd M5 x 10mm	3	C
24	192167	Piston Ring Ø48	2	B
25	192168	Cylinder Assy Ø48	1	B
28	192169	Washer	1	D
32	192172	Spring, Impulse	1	B
33	192173	Washer, Special	1	B
36	187611	Washer, Wave M5	2	C
38	168383	Screw	2	D
50	192178	Screw, Cylinder Plug	1	D
52	168494	Washer, Wave M6	4	C
54	168409	Screw, Soc Hd M5 x 12mm	2	A
55	192179	Deflector, Muffler	1	C
63	168366	Spring, Clutch	1	D
64	168651	Tube, Fuel	1	C
65	192182	Screw Guide	1	C
66	192183	Support, Manifold	1	C
67	192184	Carburetor	1	B
68	192185	Tube, Impulse	1	B
69	187528	Screw, Special	1	C
70	192186	Clutch Complete	1	C
71	192187	Flange, Manifold	1	C
72	192188	Manifold	1	C
73	192189	Clutch Drum w/ Bearing	1	B
74	192190	Bearing, Clutch	1	C
75	192191	Spacer	1	C
76	187438	Screw, Soc Wash Hd M5 x 14mm	2	A
77	168483	Washer	2	D
78	187438	Screw, Soc Wash Hd M5 x 14mm	4	A
79	187611	Washer, Wave M5	2	C

Figure 3 – Crank Case Assembly

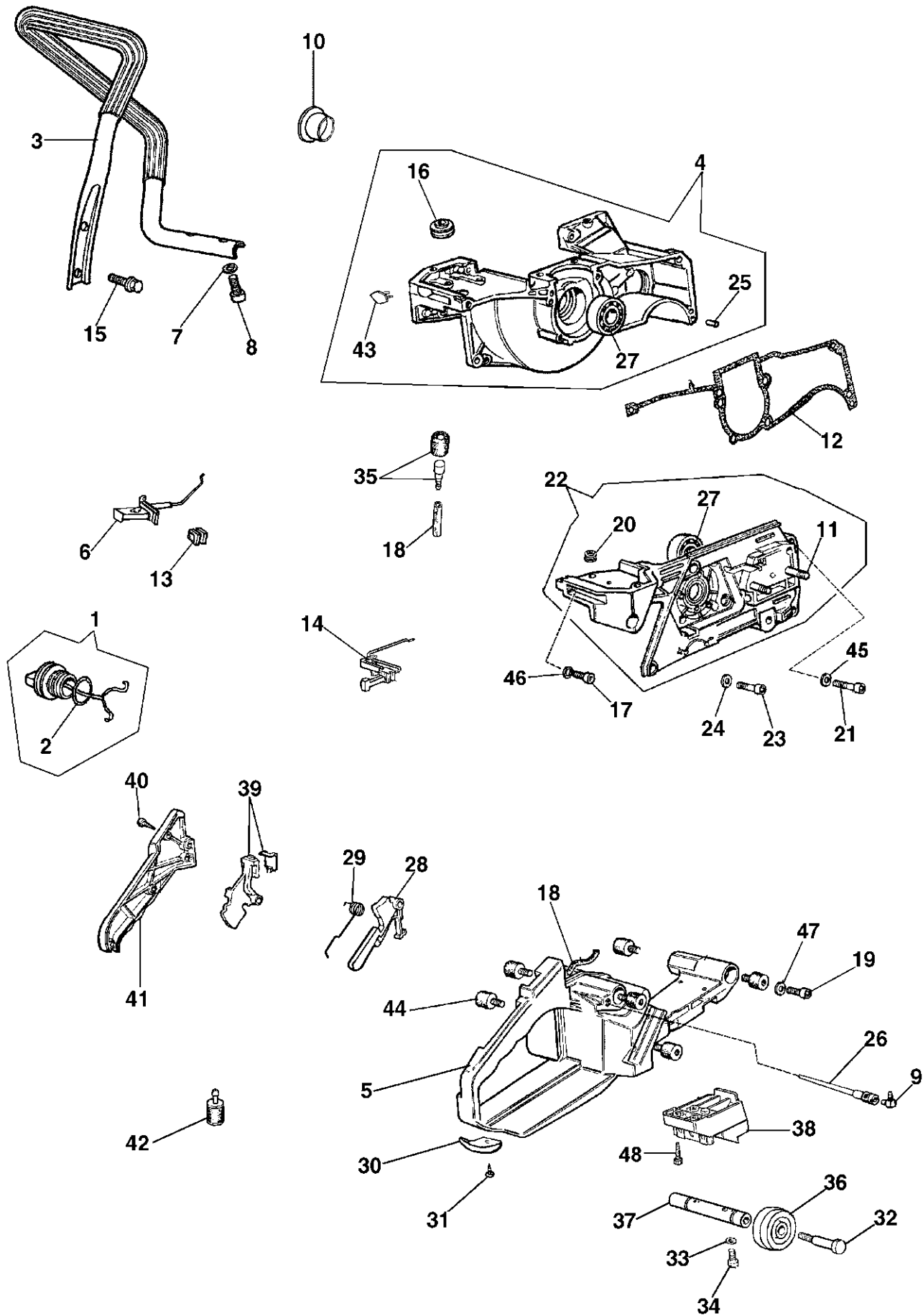


Figure 3 – Crank Case Assembly

Loc.	P/N	Description	Qty	Level
1	192192	Complete Cap - Fuel	1	B
2	168621	O-Ring	1	A
3	192193	Handle	1	C
4	192194	Crankcase, LH - Blue	1	C
5	192195	Fuel Tank - Blue	1	C
6	192196	Starter, Choke Lever	1	B
7	192197	Washer, Serrated M6	2	C
8	187481	Screw, Soc Hd M6 x 10mm	1	C
9	168579	Union	1	C
10	192198	Cap	1	C
11	187487	Stud	2	B
12	192199	Gasket	1	C
13	187483	Bushing	1	C
14	192200	Throttle Linkage	1	C
15	187480	Screw, Special	2	C
16	192201	Grommet	1	D
17	187489	Screw, Soc Hd M5 x 22mm	1	C
18	168651	Tube, Fuel	1	C
19	168409	Screw, Soc Hd M5 x 12mm	3	A
20	192202	Grommet, Vent	1	D
21	187497	Screw, Soc Hd M5 x 55mm	2	C
22	192203	Crankcase, RH - Blue	1	D
23	192204	Screw	4	C
24	187611	Washer, Wave M5	4	C
25	168480	Pin	2	D
26	168674	Breather, Fuel Tank	1	D
27	168484	Bearing	2	C
28	187495	Lever	1	C
29	187494	Spring	1	C
30	192205	Guard	1	D
31	192206	Screw, Self Tapping	1	D
32	171870	Bolt, Shoulder 3/8-16 x 1 1/4	2	B
33	192197	Washer, Serrated M6	2	C
34	192207	Screw, Soc Hd M6 x 16mm	2	D
35	187490	Tank Breather	1	C
36	192208	Wheel	2	B
37	192209	Axle	1	B
38	187505	Support, Wheel	1	C
39	192210	Throttle Lever	1	C
40	187496	Screw, Self Tapping	3	C
41	192211	Cover, Rear Handle - Blue	1	C
42	168245	Filter, Fuel	1	A
43	192212	Cap	1	C
44	187498	Shock Absorber	4	B
45	187611	Washer, Wave M5	1	C
46	187611	Washer, Wave M5	1	C
47	187611	Washer, Wave M5	1	C
48	187480	Screw, Special	2	C

Figure 4 – Air Filter Assembly

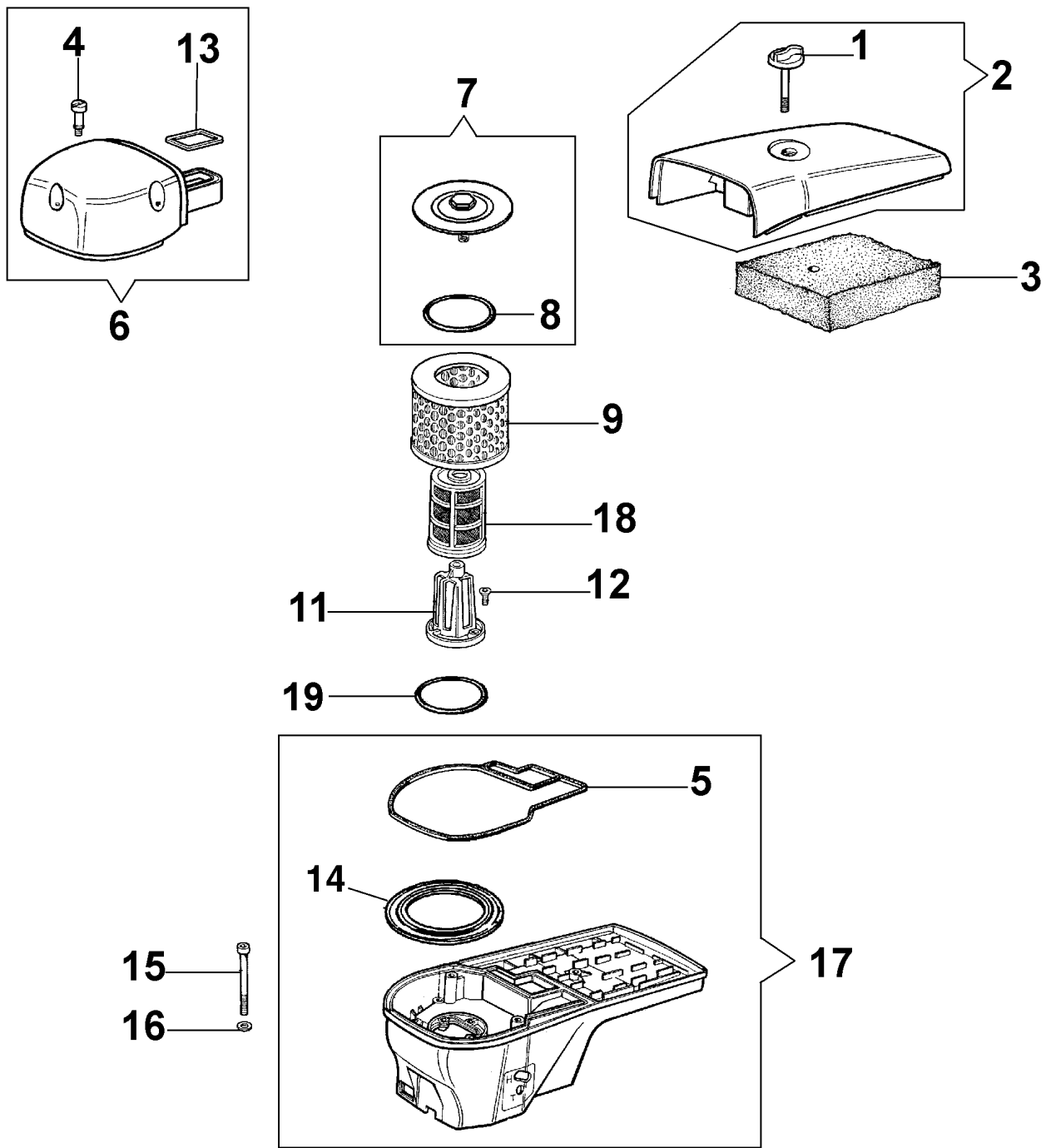


Figure 4 – Air Filter Assembly

Loc.	P/N	Description	Qty	Level
1	187510	Knob	1	B
2	187511	Filter Cover, Foam	1	C
3	192127	Air Filter - Foam	1	A
3	192128	Air Filter - Foam (6-Pack)	1	A
4	187513	Screw, Special	3	B
5	187514	Gasket	1	B
6	192213	Filter Cover w/ Screws	1	A
7	168442	Flange Nut	1	B
8	168470	O-Ring, Filter Cannister	1	C
9	168323	Air Filter, Paper	1	A
11	187516	Filter Tower	1	B
12	187517	Screw, Flat Hd M5 x 14mm	3	C
13	187518	Gasket	1	B
14	168444	Gasket	1	B
15	187519	Screw, Soc Hd M5 x 65mm	3	C
16	187611	Washer, Wave M5	3	C
17	192214	Base, Air Filter	1	C
18	168443	Air Filter, Screen	1	A
19	168470	O-Ring, Filter Cannister	1	C

Figure 5 – Blade Guard & Arm Assembly

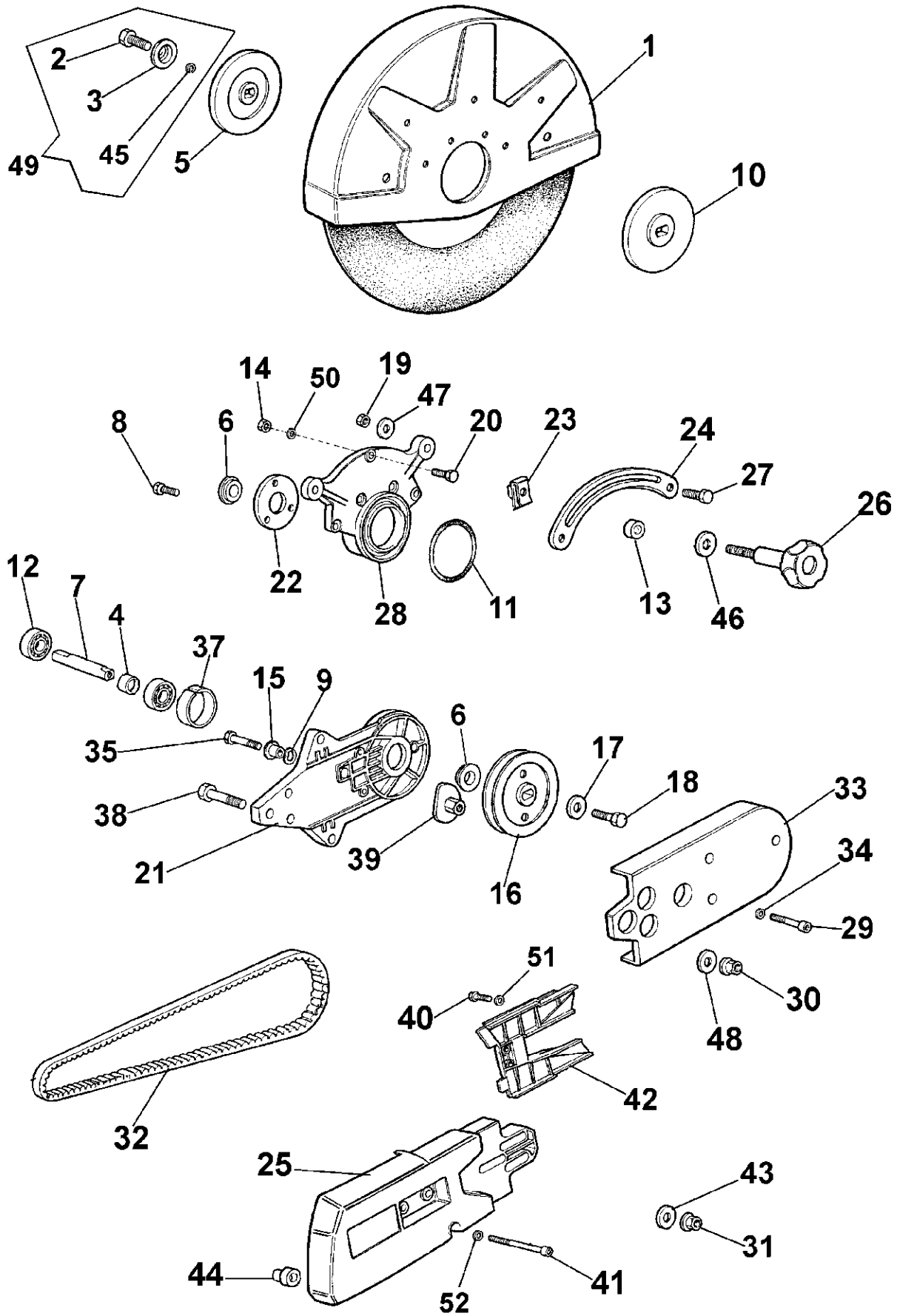


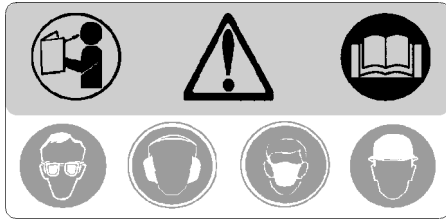
Figure 5 – Blade Guard & Arm Assembly

Loc.	P/N	Description	Qty	Level
-	192219	Arm Assy, Complete - 12" **	1	C
-	192220	Arm Assy, Complete - 14" **	1	C
1	187530	Blade Guard - 12" Black	1	B
1	187531	Blade Guard - 14" Black	1	B
2	187532	Screw, Hex Hd M8 x 25mm	1	C
3	168839	Washer, Special	1	C
4	187534	Spacer	1	C
5	168924	Flange, Outer	1	B
6	187535	Spacer	2	B
7	168817	Blade Shaft	1	C
8	168345	Screw, M5 x 15mm	3	C
9	168377	Washer	1	B
10	168925	Flange, Inner 1" - 20mm	1	B
11	168869	O-Ring	1	B
12	187672	Bearing	2	B
13	187536	Spacer	1	C
14	168597	Nut, M5	5	C
15	187537	Spacer	1	C
16	168881	Pulley	1	B
17	187538	Washer, Wide M8	1	C
18	168874	Screw, Hex Hd M8x20	1	C
19	192215	Nut, M6	2	C
20	187540	Screw, Hex Hd M5 x 15mm	5	C
21	187541	Arm	1	B
22	187542	Flange	1	C
23	187543	Guide Lock	1	B
24	187544	Adjust Guide	1	C
25	192216	Belt Cover	1	C
26	187546	Knob	1	B
27	187547	Screw, Hex Hd M6 x 22mm	2	C
28	187548	Support	1	C
29	187549	Screw, Soc Hd M5 x 30mm	2	B
30	168465	Nut, Flange Hd M8	3	A
31	187551	Nut, Fiberlock M8	2	B
32	192137	V-Belt, XPZ862	1	A
33	187553	Cover	1	B
34	187611	Washer, Wave M5	2	C
35	187554	Screw, Hex Hd M6 x 25mm	1	C
37	187555	Bushing	1	C
38	187556	Screw, Hex Hd M8 x 30mm	3	C
39	187557	Belt Adjust	1	C
40	187540	Screw, Hex Hd M5 x 15mm	2	C
41	187559	Screw, Hex Hd M5 x 80mm	1	C
42	192218	Cover	1	C
43	187561	Washer, Flat M8	2	C
44	168411	Grommet	1	C
45	168836	Ring	1	C
46	187439	Washer, Wave M8	1	B
47	187658	Washer, Fender M6	2	C
48	187538	Washer, Wide M8	3	C
49	187533	Screw Assy	1	B
50	187611	Washer, Wave M5	5	C
51	187611	Washer, Wave M5	2	C
52	187611	Washer, Wave M5	1	C

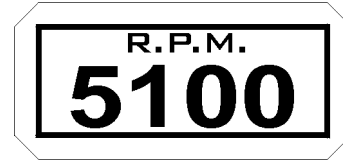
** Arm Assy includes all items except 31, 41, 43, & 52

Notes:

DECAL DESCRIPTIONS AND LOCATIONS DESCRIPCIÓN DE CALCAMONIAS Y UBICACIONES



P/N 168900
Location: Filter Cover



P/N 187688
Location: Blade Guard



P/N 192024
Location: Blade Guard
Qty 2



P/N 174881
Location: Blade Guard



P/N 192139
Location: Side
Qty 2



P/N 187676
Location: Filter Cover



P/N 187677
Location: Blade Guard

Target Corporate Office

Customer Service 800-288-5040
 Corp. Office 913-928-1000
 Cust. Service FAX 800-825-0028
 Corp. Office FAX 913-438-7951
 Cust. Service, Int'l. 913-928-1300
 Int'l. E-mail rcoats@db-inc.com

Target Latin America, Mexico, Caribbean, Central and South America

17400 West 119th Street
 Olathe, Kansas 66061
 Phone 913-928-1255
 FAX 913-438-7938
 E-mail hleon@db-inc.com

Target Canada

17400 West 119th Street
 Olathe, Kansas 66061
 Customer Service 800-288-5040
 E-mail rbaker@db-inc.com

Target Hong Kong, China

Diamant Boart Pte Ltd.
 Unit E, 13/F., Infotech Centre,
 21 Hung To Road, Kwun Tong,
 Hong Kong
 Phone 852-2516-6602
 FAX 852-2516-6605
 E-mail targethk.netvigator.com

Target Japan, Korea, Taiwan

1803-36 Oyama-Machi
 Machida-Shi, Tokyo 194-0212
 Japan
 Phone 8142-797-0212
 FAX 8142-798-7515
 E-mail fwnh9794@mb.infoweb.ne.jp

Target Australia, New Zealand/Dembicon Pty. Ltd

29 Kinkaid Avenue
 North Plympton, Adelaide SA 5037
 Australia
 Phone 61-83751000
 FAX 61-83710990
 E-mail enquiries@dembicon.com.au
 Internet www.dembicon.com.au

Target Brazil

Pix Do Brasil
 Rua José de Oliveira Coutinho
 São Paulo, Brazil CEP 01144-020
 Phone 55 11 3611-8383
 FAX 55 11 3619-3022
 E-mail pixbrasil@uol.com.br



Target Singapore, Thailand, Vietnam, Malaysia, Indonesia

Phone 65-9628-6175
 FAX 65-234-2896
 e-mail reeh@singnet.com.sg

European Headquarters

DB Construction Business Group
 Avenue Du Pont De Luttre, 74
 1190 Brussels, Belgium
 Phone (32-2) 348-3669
 FAX (32-2) 348-3136
 Internet www.diamant-boart.com

Target Internet www.targetblue.com


WARNING


The engine exhaust from this product contains chemicals known to the State of California to cause cancer, birth defects or other reproductive harm.

