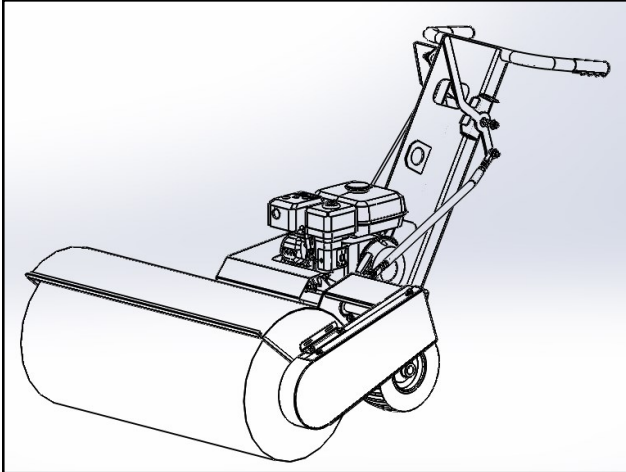


GS 36 Sweeper

OPERATORS' INSTRUCTION MANUAL

Per OSHA 1926.503 it is the machine owner's responsibility to ensure that all workers using this Sweeper are thoroughly trained in its' use and limitations.



Garlock provides this Operators' Manual as a tool to help instruct the owner/worker in the proper use of this machine. Garlock expects the reseller and machine owner to make every effort to abide by OSHA 1926.503 and educate the worker in the proper use and limitations of this machine before putting it into service.

Keep this Manual with the Sweeper at all times. This will allow new users to read it before operating the Sweeper.

It is the Sweeper owner's responsibility to ensure that all workers using this machine are thoroughly trained. Provide workers with this Operators' Manual and make sure they understand its' contents. Read it to them if necessary. Letting poorly trained workers use this machine can result in property or machine damage and/or serious injury or death to personnel.

WARNING! THIS MACHINE IS DESIGNED FOR USE ON FLAT, LEVEL SURFACES ONLY. ANY OTHER USE CAN CAUSE INJURY OR DEATH TO OPERATOR.



Thank you for purchasing this Garlock product. With proper use and care, the Sweeper will serve you for many years. For safety of the operator and other people on the jobsite, it is imperative the operator read and understand the contents of this Operators' Manual before using the Sweeper.

Date of Purchase_____ Serial Number(if applicable)_____

WARNING! Before beginning work on the roof, install OSHA approved Perimeter Guarding Systems around all roof edges and openings. This includes all Skylights (whether they are left in place or removed) and any Roof Hatches which are left open or have been removed.

It is against Federal Law to leave these areas unguarded and will result in fines against the Contractor if any unguarded openings are on the roof.

In the event of **injury or death of a worker** due to falling from an unguarded edge or through an unguarded opening, **legal prosecution** may be brought against the Contractor, Equipment Owner and Building Owner.

WARNING! Working at or near the roof edge is dangerous and can subject the Worker to serious injury or death from falls. The Roofing Contractor and the Worker must make every effort to ensure the area where he/she will be working is as safe as possible. This means taking only the tools you need to the roof edge, removing all trip hazards and loose material, the wearing and proper use of OSHA approved Fall Arrest Devices, Harnesses and Life-Lines, making no sudden or unplanned moves and being constantly aware of your surroundings and your position/location relative to the roof edge.

It is also imperative that the Worker read the Operators' Manual for this Sweeper and thoroughly understand how to set up and use this system. This includes knowledge of what the Sweeper can do and also how avoid situations this Sweeper was not designed to handle. Garlock provides this Operators' Manual at the time of sale as a tool to help instruct the owner/worker in the proper use of the Sweeper and expects the reseller and owner/worker to make every effort to educate themselves before putting this Sweeper into service.

Operator Preparation:

Read Instructions

Reading the instructions completely is the first step to safe operation. An uninformed operator can subject themselves and others to serious injury or death.

Wear Proper Attire

Wear safety glasses and protective clothing if any cutting, scraping, or sweeping is being done in the work area during operation. Wear safety shoes. Hard hat must be worn by operator when work is being done overhead. When working with hot stuff, long sleeved cotton shirt buttoned at sleeves and collar must be worn (or other suitable protective clothing). Long pants without cuffs, and a face shield are also required when working with hot bitumen.



TO PREVENT FALLS
THROUGH HOLES IN ROOF,
INSTALL OSHA APPROVED
GUARDS AND COVERS
OVER ALL ROOF OPENINGS.



USE PROPER GUARD RAIL
SYSTEM AND COMPLY WITH
ALL OSHA PERIMETER
GUARDING REGULATIONS!

Roof Preparation:

Inspect Roof Deck

Before allowing equipment and personnel access to roof, make certain roof is strong enough to support the weight of the machine, operator and all personnel working near the machine. Clear the area of all potentially dangerous obstacles that could cause personal injury to the operator or others. Keep unauthorized people away from construction area. **WARNING! Check to see that all roof openings are guarded per OSHA regulations. Failing to do so may cause injury or death.**

Maintain Warning Line System

Operation of Sweeper must comply with Federal OSHA standards governing perimeters with respect to the use of power equipment. When operating parallel to roof edge, warning line system must be at least six feet from the edge. When operating perpendicular to edge, warning line must be ten feet from roof edge.

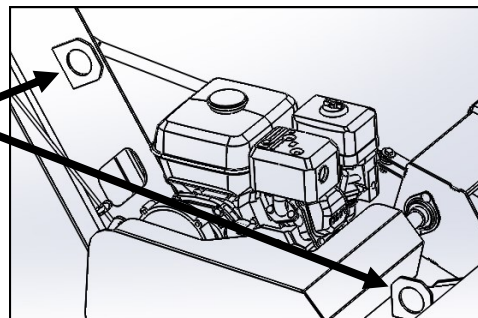
Hoisting machine to the Roof:

Inspect the Hoist

Make certain hoist is in safe operating condition and operated by trained personnel. The hoist should be clear of ground objects, such as power lines; it should be secure and properly counter-balanced. Hoist should be inspected for frayed cables, bent frame members or faulty mechanical parts. Make sure everyone on the ground is completely clear of the hoisting area.

Attach Hoist Hooks the (2) Lift Rings along center of Frame.

The machine weighs 280 lbs. Do not attach Hook to any other part of this machine. Use only Hooks equipped with a spring loaded catch.



Operator Controls:

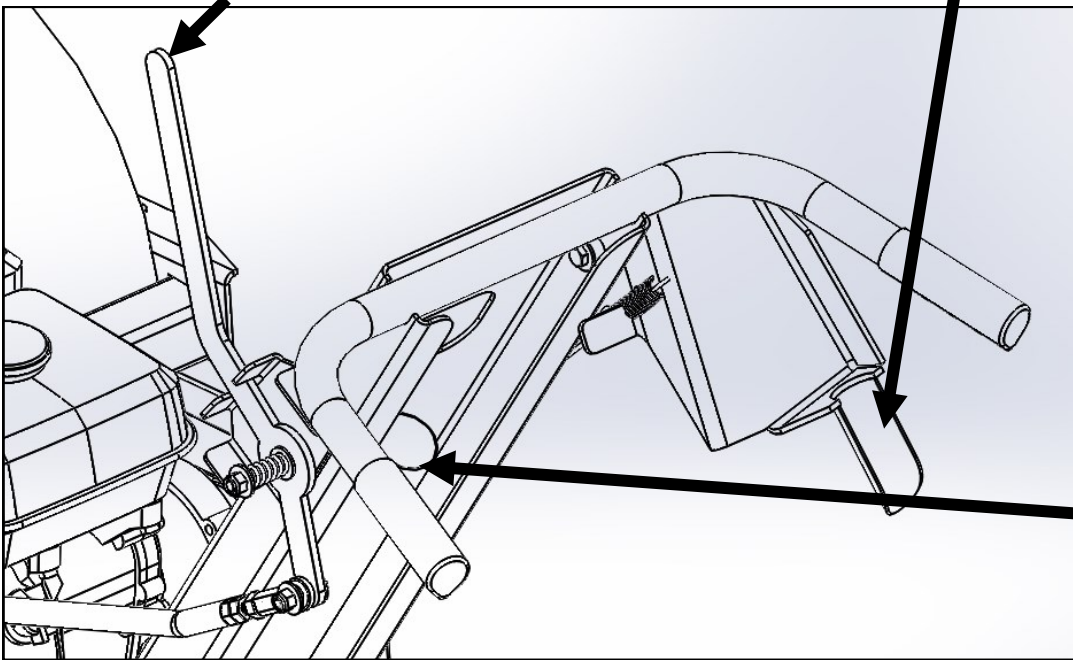
Make sure all workers who may operate this machine fully understand what each control does and how to operate them.

Brush Angle Adjustment Lever

Palanca de ajuste angular del cepillo:

Clutch Engagement Lever

Palanca de acoplamiento del embrague:



Instruction Manual is
inside this Tube.
*Manual de instrucciones se
encuentra dentro de este
tubo.*

Clutch Engagement Lever:

Pulling this Lever UP engages both the drive system and the brush; **Sweeper will move FORWARD.**
Release this Lever to **STOP** the machine.

Brush Angle Adjustment Lever:

To angle the Brush to the left, move Lever forward. To angle the Brush to the right, move Lever back.

Make sure Lever is inserted firmly in the Slot before letting go of Lever!

Palanca de acoplamiento del embrague:

Halando esta palanca hacia arriba se acopla sistema para poner en marcha y el cepillo; la barredora se moverá hacia adelante. Suelte la palanca para detener la máquina.

Palanca de ajuste angular del cepillo:

Para mover el Cepillo hacia la izquierda, mueva la palanca hacia adelante. Para mover el Cepillo hacia la derecha, mueva la palanca hacia atrás.

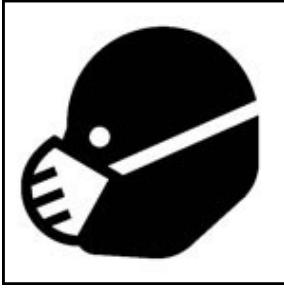
Asegúrese de que la palanca esté firmemente insertada en la ranura antes de soltar la palanca!



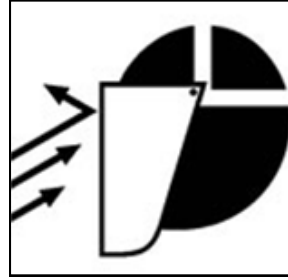
ON/OFF Switch: Turn to "ON" before pulling Recoil Rope. *Interruptor de encendido / apagado (ON / OFF): coloque el interruptor en "ON" antes de tirar de la cuerda.*

Throttle/Choke Switch: Move gray lever forward to "Choke" engine. *Interruptor acelerador / estrangulador: Mueva la palanca gris hacia adelante para "Ahogar" el motor.*





ALWAYS WEAR
BREATHING MASK
WHILE OPERATING
THIS MACHINE.



ALWAYS WEAR EYE
PROTECTION WHILE
OPERATING THIS
MACHINE.

Machine Operation:

BEFORE OPERATING, Check to see that engine has been serviced properly. Read operating instruction and safety warnings. Make certain that belt guards, chain guard, brush cover are in place. Check oil and fuel levels. Check to see that spark plug is tight.

Start-up

Before operating the Sweeper, read and understand all Operator Controls and Warnings. When operating the machine for the first time, position the machine on the ground or in an open area away from obstructions and roof edges. Without sweeping any material, practice maneuvering the machine by operating controls as described on page 4.

Use slow engine speed until you are well-practiced at maneuvering the Sweeper. It is up to each operator to make certain that the machine functions properly. When the operator releases the Belt clutch lever, the GS 36 sweeper should be in neutral and should not “creep” forward or backward. **WARNING! If the machine “creeps”, do not operate the machine until adjustments or repairs have been made.**

Puesta en marcha

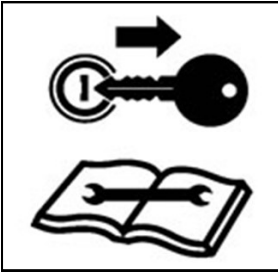
Antes de operar la barredora, leer y entender todos los controles del operador y advertencias. Al utilizar la máquina por primera vez, coloque la máquina en el suelo o en un área abierta, lejos de obstrucciones y bordes del techo. Antes de barrer material, practicar maniobrando la barredora utilizando los controles de operación como se describe en la página 4.

*Practique en una velocidad lenta del motor hasta que esté bien familiarizado con el funcionamiento de la barredora GS 36. Corresponde a cada operador el asegurarse de que la máquina funciona correctamente. Cuando el operador suelta la palanca del embrague de la correa, la barredora GS 36 debe estar en neutro y no debe moverse hacia adelante o hacia atrás. **ADVERTENCIA! Si la máquina “flene movimiento en neutro,” no utilice la máquina hasta que se hayan hecho ajustes o reparaciones.***

WARNING! DO NOT OPERATE WITHIN TEN FEET OF ROOF EDGE OR SIX FEET IF OPERATING PARALLEL TO ROOF.

If the machine is operated near a roof edge material handling area, operator must comply with OSHA regulations in regard to use of a Motion-Stopping-Safety (MSS) system.

WARNING! Never allow untrained personnel to operate the Sweeper! Keep well clear of other people on the roof while operating. Turn off the machine when not in actual use by a qualified operator.



This machine is to be serviced by a qualified Service Technician only.

The Sweeper operates in a very dusty environment. Clean off Engine, especially the cooling fins regularly to avoid Engine overheating during operation.

Machine Maintenance:

Lubrication recommendations

Grease Brush drive shaft U-joint weekly. Grease zerk is located at the center of joint.

The brush pivot has oil-less bushings and therefore does not need grease.

Engine Lubrication

Read engine maintenance instructions. Change engine oil after 5 hours of first use.

To prolong the life of your engine in this dusty working environment, change engine oil after every 8 hours of use.

It is advisable to change oil in gear reducer, located at engine output shaft every time you change engine oil.

Engine Service

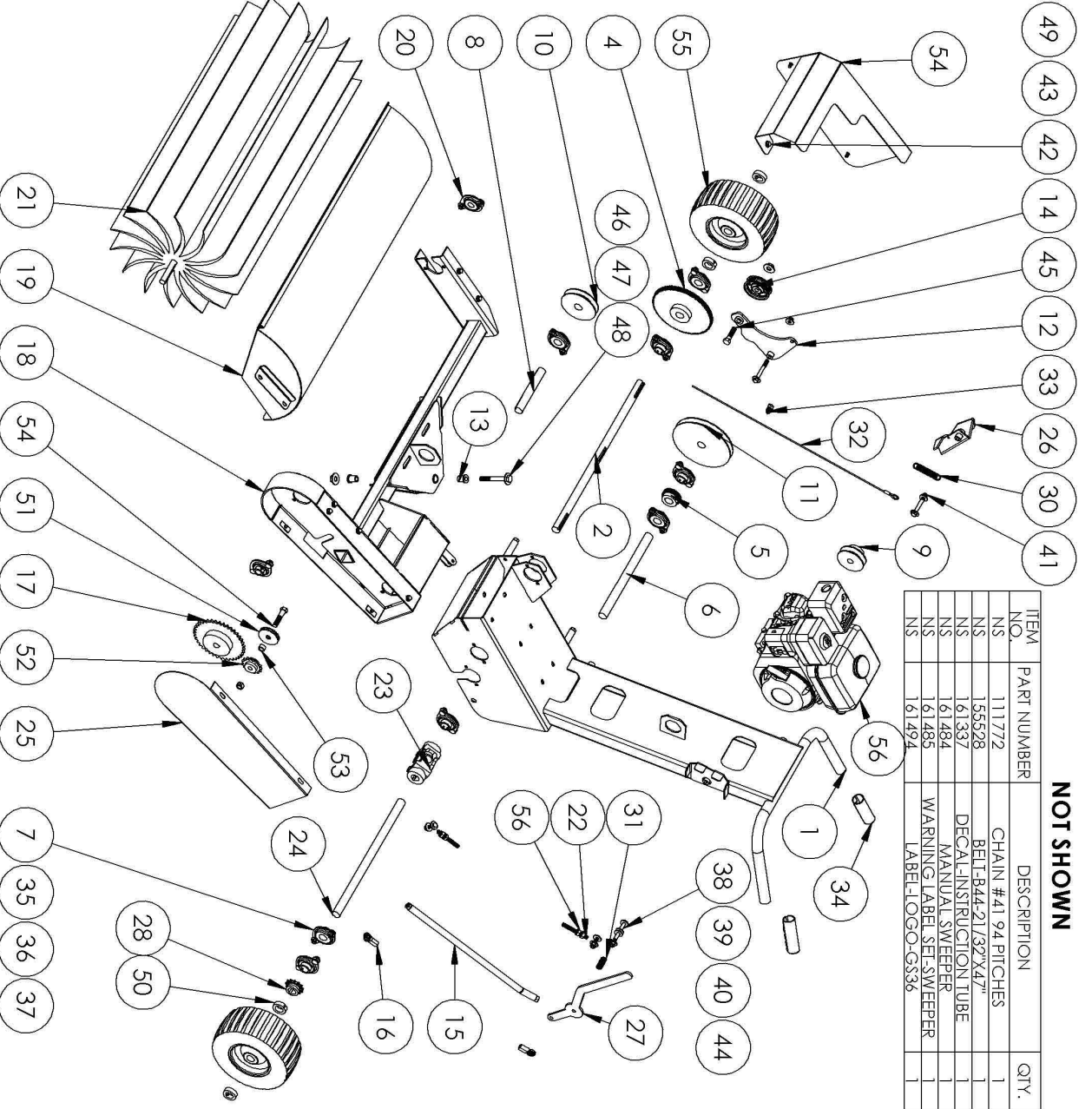
If service or repair of engine is needed, contact a Honda service center near you. You will need the model, type and code number of your engine, located on blower housing.

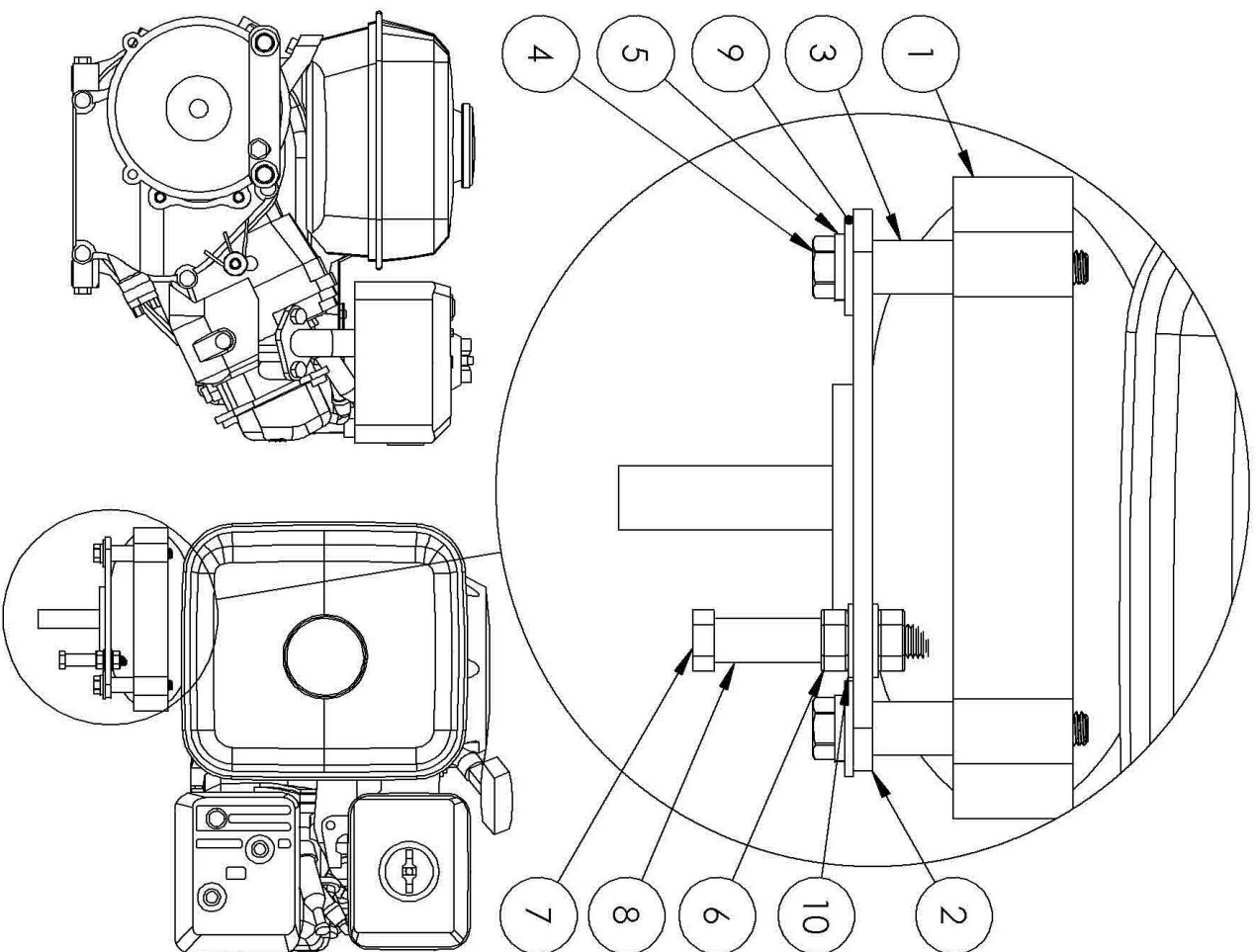
NOTE: Garlock Equipment Company warranty does not cover the engine. This is covered by a separate warranty from Honda.

PARTS LIST AND TUNING PROCEDURE

ITEM NO.	PART NUMBER	DESCRIPTION	QTY
1	408069	SWEOPER FRAME WELD	1
2	427911	SHAFT-DRIVE WHEELS	1
4	111460	GEAR 120 TOOTH	1
5	111461	GEAR 32 TOOTH	1
6	427912	SHAFT - DRIVE SHORT	1
7	402459	FLANGE BEARING ASSEMBLY	8
8	427913	SHAFT - SWEOPER DRIVE	1
9	111462	PULLEY 3 INCH	1
10	111463	PULLEY 4 INCH	1
11	111464	PULLEY 7 INCH	1
12	408073	IDLER WELD	1
13	111468	BUSHING	2
14	110125	IDLER PULLEY	1
15	408075	ADJUSTER ROD	1
16	110982	ROD END FEMALE .38 PIVOT	2
17	111355	SPROCKET 41B40 .75 BORE	1
18	408070	BRUSH FRAME WELD	1
19	408071	BRUSH COVER WELD	1
20	402558	BEARING ASSEMBLY	2
21	401600	BRUSH ASSEMBLY	1
22	425978	THREADED ROD	2
23	111467	U JOINT	1
24	421914	SHAFT - SWEOPER DRIVE	1
25	427909	GUARD-C-CHAIN	1
26	408074	BROOM CONTROL WELDMENT	1
27	421915	ANGLE ADJUST HANDLE	1
28	111354	SPROCKET 41B13H 1" BORE	1
30	154283	SPRING WITH ENDS	1
31	111608	SPRING	1
32	402003	30 IN CABLE	1
33	150555	CABLE CLAMP	1
34	150473	GRIP- BLACK-1.25	2
35	100254	CARRIAGE BOLT 5/16 X 3/4	20
36	100181	NUT PLASTIC LOCK	24
37	100125	WASHER-FLAT .31	20
38	100564	WASHER-38 X 3/75	1
39	100126	WASHER-FLAT .38	12
40	100169	3/8 LOCK NUT	5
41	100326	HHCS-38 X 3.25	1
42	100005	HHCS .31 X .75	11
43	100092	WASHER-SPLITLOCK .31	7
44	100008	HHCS .31 X 1.5	2
45	100034	HHCS 1/2 X 2	1
46	100170	NUT-PLASTIC LOCK .5	3
47	100457	1/2" SPLIT WASHER	3
48	100226	HHCS 1/2 X 4	1
49	100463	WASHER-FLAT-SAE .38	15
50	110115	SET COLLAR 1510 1.00	4
51	100196	1/2 X2.5 OD WASHER	2
52	110950	15T IDLER SPROCKET & BUSHING	1
53	425697	TUBE-SPROCKET BUSHING	1
54	100036	HHCS 1/2 X 2-1/2	1
56	100978	NUT-HEX-HEAVY .38-24 UNF UNP	4
54	427905	PLATE-BELT COVER	1
55	140697	WHEEL FOAM FILLED	2
56	200586	5.5 HP HONDA ENGINE	1

NOT SHOWN





ITEM NO.	PART #	DESCRIPTION	QTY.
1	110484	5.5HP HONDA FLIPPED REDUCER	1
2	428268	PLATE-IDLER MOUNT	1
3	111773	BUSHING .31 X .50 X .75	2
4	100908	HHCS M8 X 60MM	2
5	100092	WASHER-SPLITLOCK .31	2
6	100068	NUT-HEX .31	2
7	100010	HHCS .31 X 2.0 GRADE 8	1
8	111606	BUSHING .31 X 1	1
9	100125	WASHER-FLAT .31	2
10	100463	WASHER-FLAT-SAE .38	2

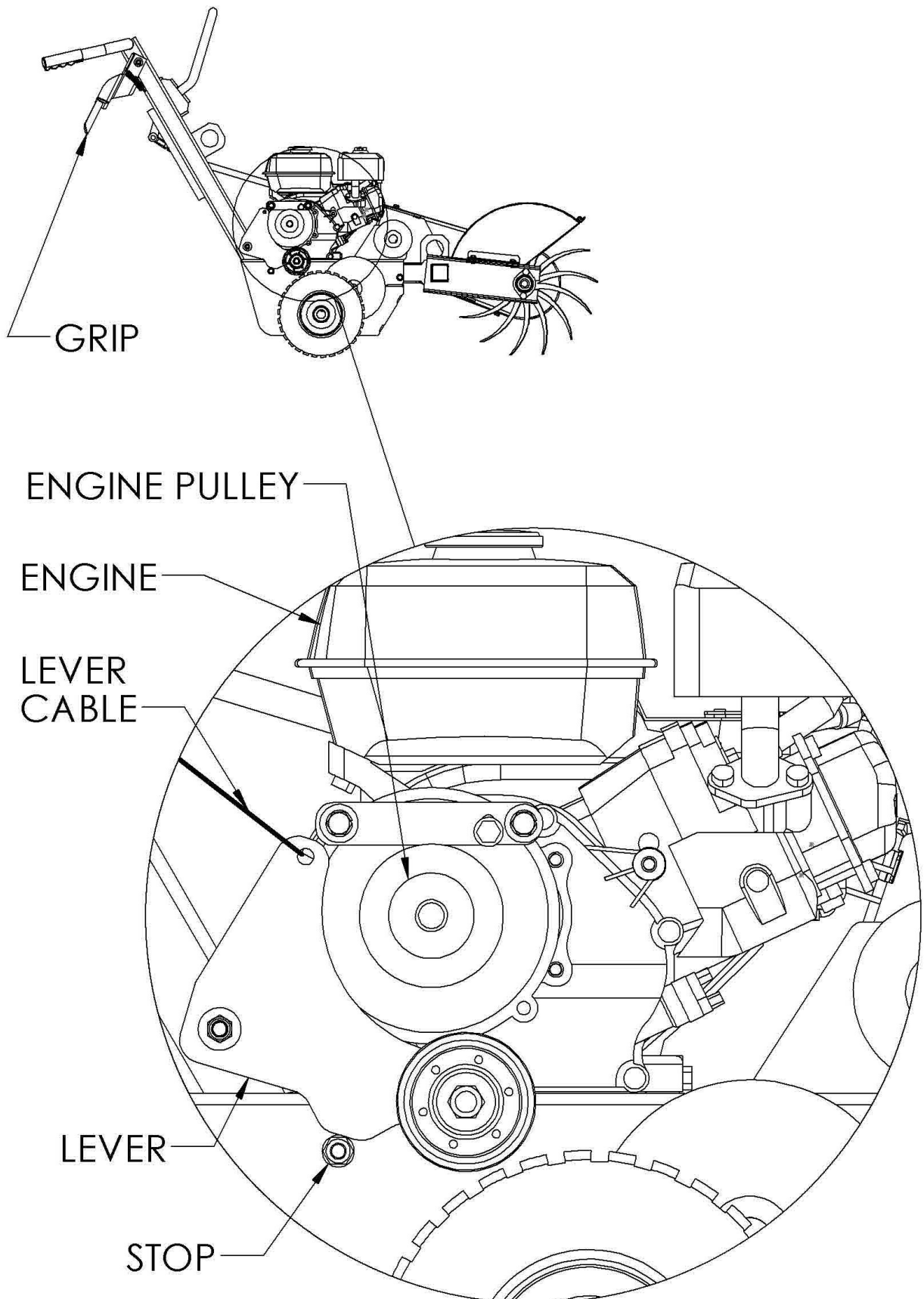
Belt Tightening/Replacement Procedure:

It is common for belts on a new machine to stretch after a few hours of use and require re-tensioning. Re-tensioning may also be necessary after belts have worn from prolonged use. Follow the procedure below when re-tensioning becomes necessary or when replacing an old belt.

WARNING! This procedure requires you to drive the Sweeper around. To ensure your own safety and that of others, perform this task outdoors in a large area clear of obstacles, potholes and trip hazards!

1. With Engine off and Engine mounting bolts loose, move Engine to the rear-most position.
2. Make sure Engine Drive Pulley is parallel to the other Pulleys. Use a straight edge to check this.
3. Tighten all 4 Engine bolts making sure not to move Engine and Pulleys out of alignment.
4. Adjust Lever Cable tension so Lever rotates down and rests against the Stop.
5. Raise Grip on Handle Bar and make sure Cable moves Lever up to tension the Belt.
6. Start Engine.
7. Pull Sweeper backward. It should move easily.
8. Pull Grip up and drive Sweeper forward.
9. As you move along, SLOWLY pull up on Handle Bar to load Brush. **WARNING! DO NOT RAISE TIRES OFF THE GROUND OR SWEEPER WILL BACK UP SUDDENLY!**
10. SHUT OFF ENGINE
11. If sweeper is not easy to pull backward, move engine towards front of sweeper by no more than 1/8" at a time, repeating steps 1-3 and 6-7.
12. If Brush stalls, increase Cable tension slightly; repeating steps 5-9. Lever no longer needs to touch Stop.
13. Tuning is complete when Sweeper is easy to pull backward with Engine on AND Brush does not stall.

WARNING! Shut off Engine before removing Guards or making adjustments.



NOTES:

This page intentionally left blank.

Fill out Warranty information on form on next page. Remove last page from this Manual and send it in to the Manufacturer.



This card must be filled out completely and mailed within ten (10) days from date equipment is delivered or warranty is null and void.

EQUIPMENT PURCHASED SERIAL NO.

DATE DELIVERED NAME OF PURCHASER

ADDRESS CITY STATE ZIP

PURCHASED FROM (DEALERS NAME)

ADDRESS CITY STATE

Was a copy of the owner's manual and operating instructions included with the above equipment? YES NO

Will the owner of the equipment provide instruction and copies of the owner's manual for all operators of the equipment?

YES NO

Was the equipment specified above, received in good condition? YES NO

If there was some defect or damage to the equipment, please indicate the nature of the same

Please send product catalog ☐

SIGNATURE OF PURCHASER.....
(If purchaser is a corporation, this card must be signed by corporate officer)

CUT ALONG DOTTED LINES AND MAIL TO GARLOCK EQUIPMENT CO., 2601 NIAGARA LN., MINNEAPOLIS, MN 55447

GARLOCK EQUIPMENT COMPANY
2601 Niagara Lane
Plymouth, Minnesota 55447

- (A) **EXPRESS WARRANTY:** Manufacturer warrants each product to be free from defective material and workmanship for a period of 12 months from date of delivery to purchaser except that the materials and workmanship on electrical equipment and hydraulic equipment are warranted for a period of 120 days from date of shipment to the purchaser. This warranty does not cover the engine or tires which are covered by separate warranties of the respective manufacturers.

This warranty does not apply to brushes, v-belts, cutting tools, cable or wire ropes, and impellers.

The manufacturer makes no other express warranties and no affirmation by manufacturer or its representatives by word or action shall constitute a warranty.

CONDITIONS: Since manufacturer is shipping equipment designed for specific purposes, any shop modifications made to said equipment by the owner, freight damage, collisions, overturn, dropping, water damage or damage to the machine or equipment after shipment by manufacturer voids the warranty. Warranty is further void if the equipment is subject to unusual, improper use or abuse or for purpose for which it was not intended.

The warranty is void if the machine or equipment is transferred to the possession of another by the original purchaser.

PARTS & SERVICE: During the warranty period as set forth in the express warranty parts found defective by the manufacturer's inspection and covered by the warranty will be replaced free of charge, F.O.B. Plymouth, Minnesota. Should service such as erection, demonstration or repairing of the machine or equipment be requested beyond that covered by the warranty, such service will be rendered at a charge, plus transportation and expenses of the factory service representative.

The warranty card must be filled out and returned to the manufacturer at the time the product is put into service for the warranty to be valid. Warranty claims are limited to the machine or equipment sold by the manufacturer and under no conditions do they extend to work spoilage, contracts lost, or other costs that may accrue to the user or owner of the equipment and in no event shall the manufacturer be liable for any special or consequential damages.

Model

Serial No.

Date Purchased