

The test strips provide qualitative and semi-quantitative tests in urine.

For Professional *In Vitro* Diagnostic Use Only

REF	P080007	English
Type of Strip	7P	

INTENDED USE

The Pro Advantage® Urine Reagent Strips are for the qualitative and semi-quantitative detection of one or more of the following analytes in urine: Leukocytes, Nitrite, Blood, pH, Protein, Ketone (Acetoacetic acid) and Glucose. The Pro Advantage® Urine Reagent Strips are for single use in professional near-patient (point-of-care) and centralized laboratory locations, and are intended for professional use only. The strips are intended for use in screening at-risk patients to assist diagnosis in the following areas: kidney function, urinary tract infections, carbohydrate metabolism (e.g. diabetes mellitus), liver function, acid-base balance and urine concentration. The results can be used along with other diagnostic information to rule out certain disease states and to determine if microscopic analysis is needed.

The Pro Advantage® Urine Reagent Strips can be read visually and on the Pro Advantage® Urine Analyzer.

SUMMARY

Urine undergoes many changes during states of disease or body dysfunction before blood composition is altered to a significant extent. Urinalysis is a useful procedure as an indicator of health or disease, and as such, is a part of routine health screening. The Pro Advantage® Urine Reagent Strips can be used in general evaluation of health, and aids in the diagnosis and monitoring of metabolic or systemic diseases that affect kidney function, endocrine disorders and diseases or disorders of the urinary tract.^{1,2}

PRINCIPLE AND EXPECTED VALUES

Leukocytes: This test reveals the presence of granulocyte esterases. The esterases cleave a derivatized pyrazole amino acid ester to liberate derivatized hydroxy pyrazole. This pyrazole then reacts with a diazonium salt to produce a beige-pink to purple color. Normal urine specimens generally yield negative results. Trace results may be of questionable clinical significance. When trace results occur, it is recommended to retest using a fresh specimen from the same patient. Repeated trace and positive results are of clinical significance.

Nitrite: This test depends upon the conversion of nitrate to nitrite by the action of Gram negative bacteria in the urine. In an acidic medium, nitrite in the urine reacts with p-arsanilic acid to form a diazonium compound. The diazonium compound in turn couples with 1 N-(1-naphthyl) ethylenediamine to produce a pink color. Nitrite is not detectable in normal urine.⁹ The nitrite area will be positive in some cases of infection, depending on how long the urine specimens were retained in the bladder prior to collection. Retrieval of positive cases with the nitrite test ranges from as low as 40% in cases where little bladder incubation occurred, to as high as approximately 80% in cases where bladder incubation took place for at least 4 hours.

Blood: This test is based on the peroxidase-like activity of hemoglobin which catalyzes the reaction of diisopropylbenzene dihydroperoxide and 3,3',5,5'-tetramethylbenzidine. The resulting color ranges from orange to green to dark blue. Any green spots or green color development on the reagent area within 60 seconds is significant and the urine specimen should be examined further. Blood is often, but not invariably, found in the urine of menstruating females. The significance of a trace reading varies among patients and clinical judgment is required in these specimens.

pH: This test is based on a double indicator system which gives a broad range of colors covering the entire urinary pH range. Colors range from orange to yellow and green to blue. The expected range for normal urine specimens from newborns is pH 5-7.⁹ The expected range for other normal urine specimens is pH 4.5-8, with an average result of pH 6.⁹

Protein: This reaction is based on the phenomenon known as the "protein error" of pH indicators where an indicator that is highly buffered will change color in the presence of proteins (anions) as the indicator releases hydrogen ions to the protein. At a constant pH, the development of any green color is due to the presence of protein. Colors range from yellow to yellow-green for negative results and green to green-blue for positive results. 1-14 mg/dL of protein may be excreted by a normal kidney.¹⁰ A color matching any block greater than trace indicates significant proteinuria. Clinical judgment is required to evaluate the significance of trace results.

Ketone: This test is based on ketones reacting with nitroprusside and acetoacetic acid to produce a color change ranging from light pink for negative results to a darker pink or purple color for positive results. Ketones are normally not present in urine. Detectable ketone levels may occur in urine during physiological stress conditions such as fasting, pregnancy and frequent strenuous exercise.^{4,6} In starvation diets, or in other abnormal carbohydrate metabolism situations, ketones appear in the urine in excessively high concentration before serum ketones are elevated.⁷

Glucose: This test is based on the enzymatic reaction that occurs between glucose

oxidase, peroxidase and chromogen. Glucose is first oxidized to produce gluconic acid and hydrogen peroxide in the presence of glucose oxidase. The hydrogen peroxide reacts with potassium iodide chromogen in the presence of peroxidase. The extent to which the chromogen is oxidized determines the color which is produced, ranging from green to brown. Glucose should not be detected in normal urine. Small amounts of glucose may be excreted by the kidney.³ Glucose concentrations as low as 100 mg/dL may be considered abnormal if results are consistent.

REAGENTS AND PERFORMANCE CHARACTERISTICS

Based on the dry weight at the time of impregnation, the concentrations given may vary within manufacturing tolerances. The following table below indicates read times and performance characteristics for each parameter. The sensitivities are based on visual read studies.

Reagent	Read Time	Composition	Description
Leukocytes (LEU)	120 seconds	derivatized pyrrole amino acid ester; diazonium salt; buffer; non-reactive ingredients	Detects leukocytes as low as 9-15 white blood cells Leu/ μ L in clinical urine.
Nitrite (NIT)	60 seconds	p-arsanilic acid; N-(1-naphthyl) ethylenediamine; non-reactive ingredients	Detects sodium nitrite as low as 0.05-0.1 mg/dL in urine with a low specific gravity and less than 30 mg/dL ascorbic acid.
Blood (BLO)	60 seconds	3,3',5,5'-tetramethylbenzidine (TMB); diisopropylbenzene dihydroperoxide; buffer and non-reactive ingredients	Detects free hemoglobin as low as 0.018-0.060 mg/dL or 5-10 Ery/ μ L in urine specimens with ascorbic acid content of < 50 mg/dL.
pH	60 seconds	methyl red sodium salt; bromthymol blue; non-reactive ingredients	Permits the quantitative differentiation of pH values within the range of 5-9.
Protein (PRO)	60 seconds	tetrabromophenol blue; buffer and non-reactive ingredients	Detects albumin as low as 7.5-15 mg/dL (0.075-0.15 g/L).
Ketone (KET)	40 seconds	sodium nitroprusside; buffer	Detects acetoacetic acid as low as 2.5-5 mg/dL (0.25-0.5 mmol/L).
Glucose (GLU)	30 seconds	glucose oxidase; peroxidase; potassium iodide; buffer; non-reactive ingredients	Detects glucose as low as 50-100 mg/dL (2.5-5 mmol/L).

The performance characteristics of the Pro Advantage® Urine Reagent Strips have been determined in both laboratory and clinical tests. Parameters of importance to the user are sensitivity, specificity, accuracy and precision. Generally, this test has been developed to be specific for the parameters to be measured with the exceptions of the interferences listed. Please refer to the Limitations section in this package insert.

Interpretation of visual results is dependent on several factors: the variability of color perception, the presence or absence of inhibitory factors, and the lighting conditions when the strip is read. Each color block on the chart corresponds to a range of analyte concentrations.

The reading value range for parameters of pH, protein and glucose are different between visual and analyzer methods, please refer to the Pro Advantage® Urine Analyzer Manual for the respective parameters reading range.

The sensitivities of parameters are based on the visual read studies and may vary between visual reading and the results obtained from Pro Advantage® Urine Analyzer.

PRECAUTIONS

- For *in vitro* diagnostic use only. Do not use after the expiration date.
- The strip should remain in the closed canister until use.
- Do not touch the reagent areas of the strip.
- Discard any discolored strips that may have deteriorated.
- All specimens should be considered potentially hazardous and handled in the same manner as an infectious agent.
- The used strip should be discarded according to local regulations after testing.

STORAGE AND STABILITY

Store as packaged in the closed canister at room temperature or refrigerated (2-30°C or 36-86°F). Keep out of direct sunlight. The strip is stable through the expiration date printed on the canister label. Do not remove the desiccant. Remove only enough strips for immediate use. Replace cap immediately and tightly. **DO NOT FREEZE.** Do not use beyond the expiration date.

Note: Once the canister has been opened, the remaining strips are stable for up to 3 months. Stability may be reduced in high humidity conditions.

SPECIMEN COLLECTION AND PREPARATION

A urine specimen must be collected in a clean and dry container and tested as soon as possible. Do not centrifuge. The use of urine preservatives is not recommended. If testing cannot be done within an hour after voiding, refrigerate the specimen immediately and let it return to room temperature before testing.

Prolonged storage of unpreserved urine at room temperature may result in microbial proliferation with resultant changes in pH. A shift to alkaline pH may cause false positive results with the protein test area. Urine containing glucose may decrease in pH as organisms metabolize the glucose.

Contamination of the urine specimen with skin cleansers containing chlorhexidine may affect protein test results.

MATERIALS

Materials Provided

- Strips
- Package insert

Materials Required But Not Provided

- Specimen collection container
- Timer

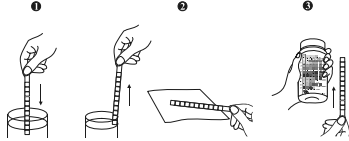
DIRECTIONS FOR USE

Allow the strip, urine specimen, and/or controls to reach room temperature (15-30°C) prior to testing.

- Remove the strip from the closed canister and use it as soon as possible. Immediately close the canister tightly after removing the required number of strip(s). Completely immerse the reagent areas of the strip in fresh, well-mixed urine and immediately remove the strip to avoid dissolving the reagents. See illustration 1 below.
- While removing the strip from the urine, run the edge of the strip against the rim of the urine container to remove excess urine. Hold the strip in a horizontal position and bring the edge of the strip into contact with an absorbent material (e.g. a paper towel) to avoid mixing chemicals from adjacent reagent areas and/or soiling hands with urine. See illustration 2 below.
- Compare the reagent areas to the corresponding color blocks on the color chart at the specified times. Hold the strip close to the color blocks and match carefully. See illustration 3 below.

Note: Results may be read up to 2 minutes after the specified times.

Results may also be read on Pro Advantage® Urine Analyzer. Refer to Pro Advantage® Urine Analyzer Instruction Manual for instructions of using the test strips with the analyzer.



INTERPRETATION OF RESULTS

Results are obtained by direct comparison of the color blocks printed on the color chart. The color blocks represent nominal values; actual values will vary close to the nominal values. In the event of unexpected or questionable results, the following steps are recommended: confirm that the strips have been tested within the expiration date printed on the canister label, compare results with known positive and negative controls and repeat the test using a new strip. If the problem persists, discontinue using the strip immediately. **Call 1-800-838-9502 for technical assistance.**

QUALITY CONTROL

For best results, performance of reagent strips should be confirmed by testing known positive and negative specimens/controls in the following conditions.

- Test QC per your laboratory policies and follow local, state and federal regulations.
- Test commercially available positive and negative quality controls with each new lot, each new shipment of strips, and when you open a new bottle of reagent strips. Please note: Water is NOT an appropriate negative control.
- Test the strips monthly that are stored for more than 30 days.
- Run QC tests to ensure reagent storage integrity; train new users; confirm test performance; and when patients' clinical conditions or symptoms do not match the results obtained on the test strips.

Call 1-800-838-9502 for technical assistance.

LIMITATIONS

Note: As with all laboratory tests, diagnostic and therapeutic decisions should not be based on any single result or method and must be considered with other clinical information available to the physician.

The Pro Advantage® Urine Reagent Strips may be affected by substances that cause abnormal urine color such as drugs containing azo dyes (e.g. Pyridium®, Azo Gantrisin®, Azo Ganfano®), nitrofurantoin (Microdantin®, Furodantin®), and riboflavin.⁸ The color development on the test pad may be masked or a color reaction may be produced that could be interpreted as false results.

Leukocytes: The result should be read between 60-120 seconds to allow for complete color development. The intensity of the color that develops is proportional to the number of leukocytes present in the urine specimen. High specific gravity or elevated glucose concentrations (\geq 2,000 mg/dL) may cause test results to be artificially low. The presence of cephalixin, cephalothin, or high concentrations of oxalic acid may also cause test results to be artificially low. Tetracycline may cause decreased reactivity, and high levels of the drug may cause a false negative reaction. High urinary protein may diminish the intensity of the reaction color. This test will not react with erythrocytes or

bacteria common in urine.⁸

Nitrite: The test is specific for nitrite and will not react with any other substance normally excreted in urine. Any degree of uniform pink to red color should be interpreted as a positive result, suggesting the presence of nitrite. Color intensity is not proportional to the number of bacteria present in the urine specimen. Pink spots or pink edges should not be interpreted as a positive result. Comparing the reacted reagent area on a white background may aid in the detection of low nitrite levels, which might otherwise be missed. Ascorbic acid above 30 mg/dL may cause false negatives in urine containing less than 0.05 mg/dL nitrite ions. The sensitivity of this test is reduced for urine specimens with highly buffered alkaline urine or with high specific gravity. A negative result does not at any time preclude the possibility of bacteruria. Negative results may occur in urinary tract infections from organisms that do not contain reductase to convert nitrate to nitrite; when urine has not been retained in the bladder for a sufficient length of time (at least 4 hours) for reduction of nitrate to nitrite to occur; when receiving antibiotic therapy or when dietary nitrate is absent.

Blood: A uniform blue color indicates the presence of myoglobin, hemoglobin or hemolyzed erythrocytes.⁸ Scattered or compacted blue spots indicate intact erythrocytes. To enhance accuracy, separate color scales are provided for hemoglobin and for erythrocytes. Positive results with this test are often seen with urine from menstruating females. It has been reported that urine of high pH reduces sensitivity, while moderate to high concentration of ascorbic acid may inhibit color formation. Microbial peroxidase, associated with urinary tract infection, may cause a false positive reaction. The test is slightly more sensitive to free hemoglobin and myoglobin than to intact erythrocytes.

pH: If the procedure is not followed and excess urine remains on the strip, a phenomenon known as "runover" may occur, in which the acid buffer from the protein reagent will run onto the pH area, causing the pH result to appear artificially low. pH readings are not affected by variations in urinary buffer concentration.

Protein: Any green color indicates the presence of protein in the urine. This test is highly sensitive for albumin, and less sensitive to hemoglobin, globulin and mucoprotein.⁸ A negative result does not rule out the presence of these other proteins. False positive results may be obtained with highly buffered or alkaline urine. Contamination of urine specimens with quaternary ammonium compounds or skin cleansers containing chlorhexidine may produce false positive results.⁸ The urine specimens with high specific gravity may give false negative results.

Ketone: The test does not react with acetone or β -hydroxybutyrate.⁸ Urine specimens of high pigment, and other substances containing sulphydryl groups may occasionally give reactions up to and including trace (\pm).⁹

Glucose: The reagent area does not react with lactose, galactose, fructose or other metabolic substances, nor with reducing metabolites of drugs (e.g. salicylates and nalidixic acid). Sensitivity may be decreased in specimens with high specific gravity (>1.025) and with ascorbic acid concentrations of \geq 25 mg/dL. High ketone levels \geq 100 mg/dL may cause false negative results for specimens containing a small amount of glucose (50-100 mg/dL).

BIBLIOGRAPHY

- Free AH, Free HM. *Urinalysis, Critical Discipline of Clinical Science*. CRC Crit. Rev. Clin. Lab. Sci. 3(4): 481-531, 1972.
- Yoder J, Adams EC, Free, AH. *Simultaneous Screening for Urinary Occult Blood, Protein, Glucose, and pH*. Amer. J. Med Tech. 31:285, 1965.
- Shchersten B, Fritz H. *Subnormal Levels of Glucose in Urine*. JAMA 201:129-132, 1967.
- McGarry JD, Lilly. Lecture, 1978: *New Perspectives in the Regulation of Ketogenesis*. Diabetes 28: 517-523 May, 1978.
- Williamson DH. *Physiological Ketoses, or Why Ketone Bodies?* Postgrad. Med. J. (June Suppl.): 372-375, 1971.
- Paterson P, et al. *Maternal and Fetal Ketone Concentrations in Plasma and Urine*. Lancet: 862-865; April 22, 1967.
- Fraser J, et al. *Studies with a Simplified Nitroprusside Test for Ketone Bodies in Urine, Serum, Plasma and Milk*. Clin. Chem. Acta II: 372-378, 1965.
- Henry JB, et al. *Clinical Diagnosis and Management by Laboratory Methods, 20th Ed. Philadelphia*. Saunders. 371-372, 375, 379, 382, 385, 2001.
- Tietz NW. *Clinical Guide to Laboratory Tests*. W.B. Saunders Company. 1976.
- Burtis CA, Ashwood ER. *Tietz Textbook of Clinical Chemistry 2nd Ed*. 2205, 1994.

Index of Symbols

	 2°C 36°F	 30°C 86°F	Store between 2-30°C (36-86°F)	REF	Catalog #
	For professional <i>in vitro</i> diagnostic use only				Consult instructions for use

CLIA Category **WAIVED**

NDC, Inc.
407 New Sanford Road
La Vergne, TN 37086
www.ProAdvantagebyNDC.com

Technical Support: (800) 838-9502

