

AUTOMATIC DRUM WASHING MACHINE

USER MANUAL

HW-D1270TVE

HW-D1270TVE ME

HW-D1470TVE

HW-D1470TVE ME



Haier

01 - 07

08 - 13

14 - 18

TABLE OF CONTENTS**BEFORE USE**

>COMPONENTS	3
>PREPARATION	4
>SAFETY INSTRUCTIONS	5
>INSTALLATION	6
>CONTROL PANEL	8

USING THE APPLIANCE

>PROGRAM SELECTION	10
>CONSUMPTION AND TECHNICAL DATA	11
>WASHING METHODS	12

MAINTENANCE

>CLEANING & CARE	16
>DISPLAY CODES	18
>TROUBLESHOOTING	19

LEGEND

For your safety, any instructions in this manual with this "Warning" sign must be followed strictly.

DISPOSAL

As a responsible retailer we care about the environment. As such we urge you to follow the correct disposal procedure for your product and packaging materials.

This will help conserve natural resources and ensure that it is recycled in a manner that protects health and the environment.

You must dispose of this product and its packaging according to local laws and regulations. Because this product contains electronic components, the product and its accessories must be disposed of separately from household waste when the product reaches its end of life.

Contact your local authority to learn about disposal and recycling. The product and packaging should be taken to your local collection point for recycling. Some collection points accept products free of charge.

We apologise for any inconvenience caused by minor inconsistencies in these instructions, which may occur as a result of product improvement and development.

COMPONENTS

Please read these instructions carefully before using this appliance. The instructions contain important information which will help you get the best out of the appliance and ensure safe and proper installation, use and maintenance.

Keep this manual in a convenient place so you can always refer to it for the safe and proper use of the appliance.

If you sell the appliance, give it away, or leave it behind when you move house, make sure you also pass on this manual so that the new owner can become familiar with the appliance and safety warnings.

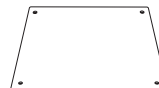
ACCESSORIES

Check the accessories and literature in accordance with this list:

1x Inlet hose assembly



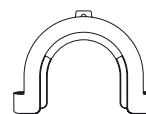
1x Bottom cover



1x User manual



1x Drain hose bracket



3x Blanking plugs



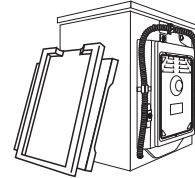
4

BEFORE USE

PREPARATION

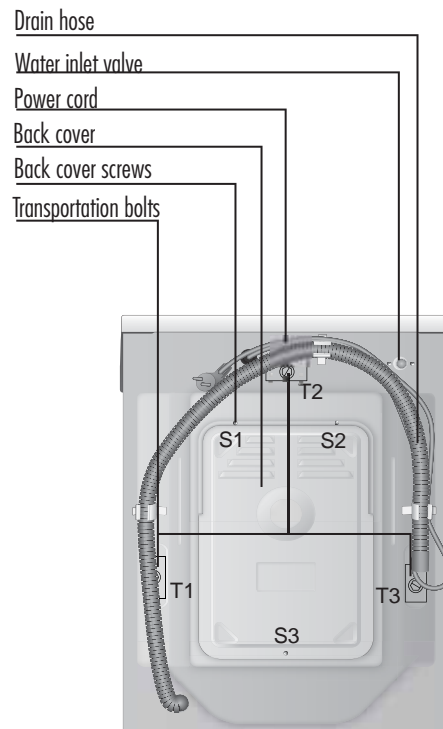
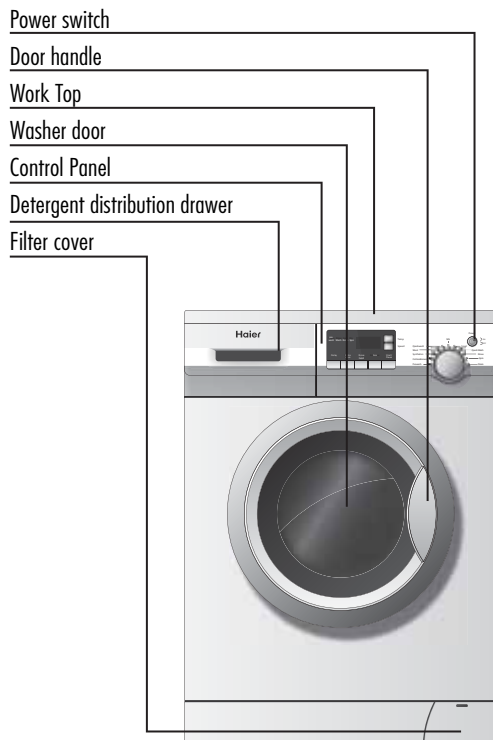
PREPARING THE MACHINE

Remove all the packing materials to prevent unsteadiness, including the polystyrene base. Upon opening the package, water drops may be seen on the plastic bag and the porthole. This is normal phenomenon resulting from water tests in the factory.



DESCRIPTION

This diagram may be slightly different from the layout of the washing machine you have just purchased due to technical improvements.



SAFETY INSTRUCTIONS**BEFORE SWITCHING THE APPLIANCE ON FOR THE FIRST TIME****DO ...**

- ... make sure that the transport bolt are removed.
- ... Use a separate earthed socket for the power supply.
- ... Make sure that the plug is accessible.
- ... Hold the plug and not the electric cable when unplugging the power supply.
- ... Make sure that the fuses in the power circuit are rated for 15A.
- ... Keep away from heat sources and direct sun light to prevent plastic and rubber components from aging.
- ... Make sure that the power cord is not caught under or in the appliance and avoid damage to the power cable.
- ... Check that hose joints and connections are firm and no water can leak. If joints are loose or there is leakage, turn off the water supply and repair. Do not use the washing machine until the hoses are properly fixed.

DO NOT ...

- ... Touch or use the appliance when barefoot or with wet or damp hands or feet.
- ... Use flammable detergent or dry cleaning agent.
- ... Use any flammable sprays in close vicinity to the appliance.
- ... Remove or insert the plug in the presence of flammable gas.
- ... Allow children or infirm persons to play with the appliance or packing materials.
- ... Install the appliance outdoors in a damp place, or in an area which may be prone to water leaks such as under or near a sink unit. In the event of a water leak allow the machine to dry naturally.
- ... Place the washing machine directly on a carpet, or close to a wall or furniture.

DURING DAILY USE OF THE APPLIANCE**DO ...**

- ... Pull up zips and fix loose threads to prevent the items from being entangled. If necessary, put small items into a net bag or pillow.
- ... Turn off the machine after each wash program and switch it off at the mains to save electricity and for safety. Wipe clean the lower part of the porthole.
- ... Keep the door slightly open when the washing machine is not in use to prevent formation of odours.
- ... Let the power cord be replaced by the manufacturer, his service agent or other accordingly qualified persons, in case it is damaged.
- ... Ensure that the appliance is not used by persons with reduced physical, sensory or mental capabilities, lack of experience and knowledge without supervision or instruction by a person responsible for their safety.
- ... Supervise children to ensure that they do not play with the appliance.

DO NOT ...

- ... Touch the washer door during the washing process - it gets hot!
- ... Place heavy objects or sources of heat or damp on top of the appliance.
- ... Hot wash foam rubber or sponge-like materials.
- ... Open the detergent distribution drawer during the wash cycle.
- ... Force the washer door open. The door is fitted with a self-lock device and will open shortly after the washing procedure is ended.
- ... Open the washer door if the water level is visibly over the porthole.
- ... Cover the washing machine with plastic cover so that inside dampness cannot be kept in.

6

BEFORE USE

INSTALLATION

ADJUSTING THE BOTTOM COVER

When open the shrink package, you will find a calcium plastic board which is laid on the top of washing machine as shown in fig.1. The board is used for reducing noise by pasting it under the cabinet when setting as shown in fig.2.

It keeps out the dampness and reduces the noise.



Fig.1

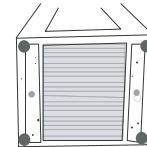


Fig.2

DISMANTLE THE TRANSPORTATION BOLTS

The transportation bolts are designed for clamping anti-vibration components inside of the washing machine during the transportation process.

1. Remove the back cover.
2. Remove the three bolts on the rear side and take out the synthetic stabilisers from within the machine.
3. Replace the back cover.
4. Fill the holes left by the bolts with blanking plugs.

Note:

1. When you replace the back cover, the convexity must face to outside, and you have to insert the back cover from the two gaps as shown in fig.3.

2. Keep the transportation bolts and synthetic stabilisers in a safe place for later use.

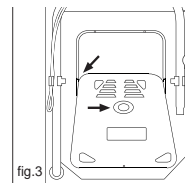
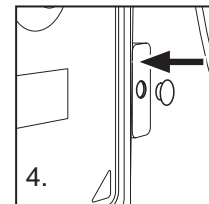
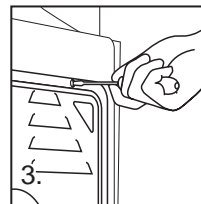
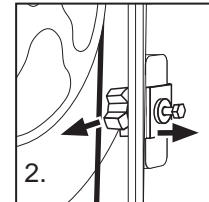
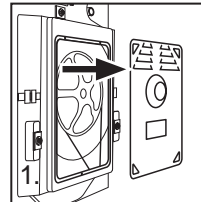
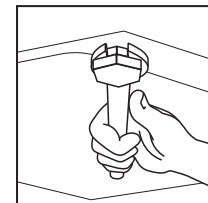


fig.3

Adjusting the washing machine

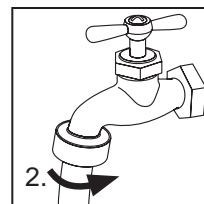
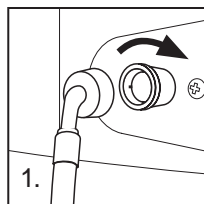
There are adjustable feet under the bottom of the washing machine. Before use, they should be adjusted so that the machine is level. This will minimise vibrations and thus noise during use. It will also reduce wear and tear. We recommend using a spirit level to level the appliance.



INLET HOSE

1. Connect the nut on the inlet hose to the connector on the water valve.
2. Apply inlet hose to a water tap with cold, fresh water.

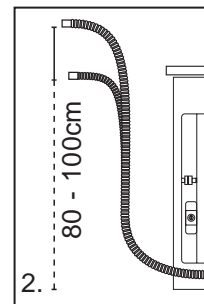
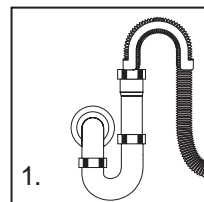
Note: Use the hose-set supplied with the appliance. Old hose-sets should not be reused.



DRAIN HOSE

1. Use the drain hose bracket to keep the end of the drain hose retained and prevent the outflow of water. Don't extend the length of the drain hose; if an extended hose is required, please consult a serviceman.
2. The height of the drainage outlet must be 80-100 cm. Fix the drain hose to the clip at the back of the washing machine to prevent it from dropping off.

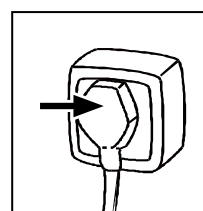
Note: The drain hose should not be submerged in water and should be securely fixed and leak-free. If the drain hose is placed on the ground or if the pipe is at a height of less than 80cm, the washing machine will continuously drain while being filled (self-siphoning).



CONNECTING TO THE POWER SUPPLY

Before connecting to the power supply, check:

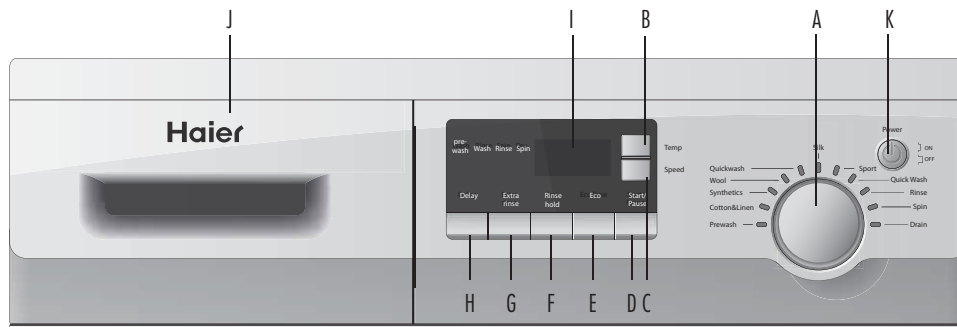
- The socket is adequate for the maximum power of the washing machine (For safety, fuses in the power circuit should be rated for no less than 15A).
- The voltage should meet the requirement.
- The power outlet should be capable of accepting the washing machine plug.
- Connect the machine to an earthed socket outlet.



8

BEFORE USE

CONTROL PANEL

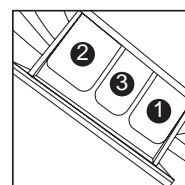


A	Program knob	F	Rinse hold button	K	Power button
B	Temperature button	G	Extra rinse button		
C	Speed button	H	Delay button		
D	Start/pause button	I	Display		
E	Eco button	J	Detergent distribution drawer		

OPERATIONAL FUNCTIONS

A	→ Program knob	_ Select program by turning the knob .
B	→ Temperature button	_ Select the desired washing temperature (-,30,40,50, 60,90°C) by pressing and holding down this button. When selected, the temperature is shown on the display. Cold wash is selected when the symbol "-" is displayed.
C	→ Speed button	_ Select the desired spin speed (0, 400, 600, 800, 1000, 1200,) by pressing and holding down this button. When selected, the speed value is shown on the display. The washing machine does not spin when "0" is displayed. The washing machine spins at 1200 rpm when "1200" is displayed.
D	→ Start/pause button	_ If you press this button, ":" will be displayed and operation will start. If you press this button during a wash cycle, the ":" sign will start blinking and operation will pause. Press it again to resume operation. Note: After operation is suspended, the washing temperature, spinning speed and other functions can not be reset.

E	→ Eco button	<p>— Before a washing program, press this button to set the required washing load (1 :3-Full), the washing machine will automatically adjust the water consumption, heating time and washing time. Users can select the washing load as required for economical operation.</p> <p>Note:1."1 :3-Full"refers to the four levels of washing load. If the laundry is more than half of the drum content, it is recommended to select 2:3-Full: otherwise, select 1:3-1:2 2.For"synthetics","sport" ,you can only select 1:3-1 :2-2:3. 3.Please adjust the detergent quantity according to the washing load selected.</p>
F	→ Rinse hold button	<p>— If you press this button, the washing machine will not drain the water after the last rinsing operation, but start a soaking cycle. The indicator light goes on. To spin the laundry, press this button again. The indicator light turns off and the program continues to the end. Note: Press only when "Prewash", "Cotton&linen", "Synthetics" or "Rinse" is selected.</p>
G	→ Extra rinse button	<p>— Press this button, the washing machine will perform additional rinses. The light turns off and the display disappears when the extra rinse ends.</p> <p>Note:Select this function when programe 1-6 or 9 is selected</p>
H	→ Delay button	<p>— Press the button repeatedly before starting the program to enter the time you want the machine to be finished in, the start will delay from 0.5 to 24 hours in 30-minute intervals. This also includes the length of the program itself, so the delay time must be longer than the program length selected.</p>
I	→Display	<p>— The display shows the washing time remaining, the selected temperature and speed, the options, the alarm warning, etc.</p>
J	→ Detergent distribution drawer	<p>— Instructions are printed on the handle of the drawer. Open the drawer, three compartments can be seen: Compartment 1: Pre-wash detergent Compartment 2: Detergent for programs 1 to 8 Compartment 3: Softener, conditioning agent, perfume, and other additives.</p>
K	→ Power button	<p>— Press this button to turn the machine on and off.</p>

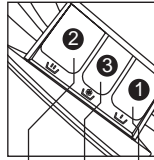


10

USING THE APPLIANCE

PROGRAM SELECTION

PROGRAM MODES



- 1 Detergent compartment for prewash mode
- 2 Detergent compartment
- 3 Compartment for softener and other additives

Program	Temperature Maximum	Preset	2	3	1	Recommended Laundry	Preset spin speed
1 → Prewash	- to 90 °C	40 °C	<input checked="" type="checkbox"/>	<input type="checkbox"/>	<input checked="" type="checkbox"/>	Cotton fabrics	1000 rpm
2 → Cotton- & linen	- to 90 °C	40 °C	<input checked="" type="checkbox"/>	<input type="checkbox"/>	<input checked="" type="checkbox"/>	Cotton fabrics	1000 rpm
3 → Synthetics	0 ° to 60 °C	40 °C	<input checked="" type="checkbox"/>	<input type="checkbox"/>	<input checked="" type="checkbox"/>	Fast colours / Medium soiled	1000 rpm
4 → Wool	0 ° to 40 °C	/	<input checked="" type="checkbox"/>	<input type="checkbox"/>	<input checked="" type="checkbox"/>	Wool fabrics	/
5 → Handwash	0 ° to 40 °C	/	<input checked="" type="checkbox"/>	<input type="checkbox"/>	<input checked="" type="checkbox"/>	Cotton or synthetic	/
6 → Silk	0 ° to 40 °C	/	<input checked="" type="checkbox"/>	<input type="checkbox"/>	<input checked="" type="checkbox"/>	/	/
7 → Sport	0 ° to 40 °C	40 °C	<input checked="" type="checkbox"/>	<input type="checkbox"/>	<input checked="" type="checkbox"/>	/	1000 rpm
8 → Quick wash	0 ° to 40 °C	40 °C	<input checked="" type="checkbox"/>	<input type="checkbox"/>	<input checked="" type="checkbox"/>	/	1000 rpm
9 → Rinse	/	/	<input checked="" type="checkbox"/>	<input checked="" type="checkbox"/>	<input checked="" type="checkbox"/>	/	1000 rpm
10 → Spin	/	/	<input checked="" type="checkbox"/>	<input checked="" type="checkbox"/>	<input checked="" type="checkbox"/>	/	1000 rpm
11 → Drain	/	/	<input checked="" type="checkbox"/>	<input checked="" type="checkbox"/>	<input checked="" type="checkbox"/>	/	/

Yes No Optional

CONSUMPTION AND TECHNICAL DATA

CONSUMPTION TABLE

The wash cycle times are intended as a guide only. The actual time used may vary due to different water pressure, initial water temperature, etc.

PROGRAM	MAX. LOAD	ENERGY CONSUMPTION	WATER CONSUMPTION	WASHING TIME
→ Prewash	7 kg	0.89 kWh	87L	2:32 h
→ Cotton 60 °C ^{*)}	7 kg	1.19 kWh	60 L	2:58 h
→ Cotton 40 °C	7 kg	0.66kWh	79 L	2:12 h
→ Synthetics	3 kg	0.475 kWh	55L	1:35 h
→ Wool	2kg	0.055kWh	44L	0:41 h
→ Handwash	3.5 kg	0.017 kWh	44L	0:39 h
→ Silk	2 kg	0.03 kWh	44L	0:41 h
→ Sport	3.5 kg	0.3 kWh	34 L	0:25 h
→ Quick	3.5 kg	0.37 kWh	34L	0:29 h
→ Hand wash	4 kg	0.147 kWh	41.8 L	0:57 h

^{*)} EN 60456 test program / Energy label program with Cotton 60 °C and max. spin speed.

TECHNICAL DATA

	HW-D1270TVE/ME	HW-D1470VE/ME
Power source	220 - 240 V / 50 Hz	220 - 240 V / 50 Hz
Max. working current (A)	10	10
Water pressure (MPa)	$0.03 \leq P \leq 1$	$0.03 \leq P \leq 1$
Nominal load (kg)	7	7
Spinning speed (r/min)	1200	1400
Washing programs	12	12
Max. power (W)	2000	2000
Dimensions (HxDxW mm)	840 x 610 x 595	840 x 610 x 595
Net weight (kg)	72	72

WASHING METHODS**PLEASE NOTE**

This washing machine is for domestic use only. Do not use it for purposes other than that for which it was designed. Follow the instructions given on the label of each garment and wash only machine-washable garments.

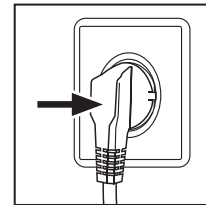
**POWER SUPPLY**

Connect the washing machine to the power supply (220V to 240V~/50Hz).

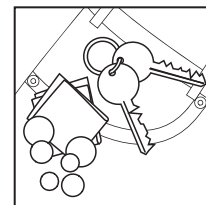
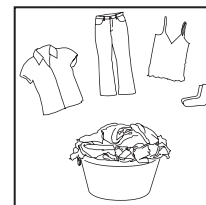
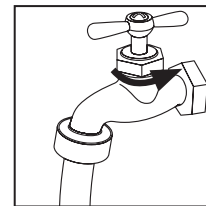
WATER CONNECTION

Turn on the tap. The water must be clean and clear.

Note: Before use, check for leakage in the joints between the tap and the inlet hose by turning on the tap.

**PREPARING THE LAUNDRY**

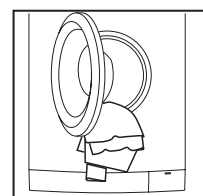
- Sort out clothes according to fabric (cotton, synthetics, wool or silk) and to how dirty they are.
- Separate white clothes from coloured ones. Wash them first by hand to check if they fade or run.
- Empty pockets (keys, coins, etc.) and remove the harder decorative objects (e.g. brooches).
- Garments without hems, underwear, finely woven textile such as fine curtains are to be put into wash bag (it is better not to wash them in a washing machine).
- Close zippers and hooks, make sure the buttons are sewn on tightly and place small items such as socks, belts, bras, etc. in the wash bag.
- Unfold large pieces of fabric such as bed sheets, bedspreads, etc.
- Turn shirts inside out.



LOADING THE MACHINE

Open the washer door, put in the laundry piece by piece. Close the door tightly.

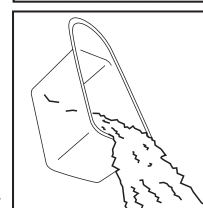
- When first using the washing machine, let it run unloaded for one program to prevent the laundry from being tainted by oil or dirty water from the washing machine.
- Do not overload the washing machine.



SELECTING DETERGENT

The washing efficiency and the performance is determined by the quality of detergent used. Special non-foaming detergent produces good washing results. Use specific detergents for synthetic and woollen goods. Do not use dry cleaning agents such as trichloroethylene and similar products.

Note: Do not add more detergent than needed. Please follow the dosage recommendation on the detergent package.

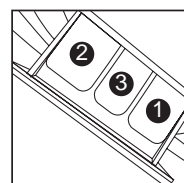


ADDING DETERGENT

Slide out the detergent drawer and put the required detergent and softening agent into the corresponding compartments. Push back the drawer gently. (Refer to the instructions on the drawer)

Caution:

- For pre-washing program, detergent should be added to both compartments 1 and 2. For other programs, do not add detergent to compartment 1.
- Use liquid detergent according to the instructions on its package. Do not use liquid detergent if the pre-wash mode or "Start delay" is selected.
- Do not overuse softener; otherwise, it will damage the artificial fibers.

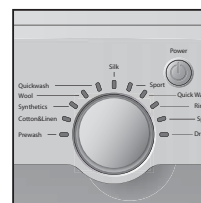


SELECTING PROGRAM

To get the best washing results, an appropriate washing program should be selected according to the laundry type. There are instructions on the handle of the detergent distribution drawer. Please turn the program knob to select the right program.

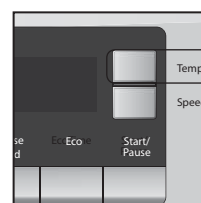
SELECTING FUNCTIONAL

Select the required options. (Refer to the "Control panel" pages 08 and 09)

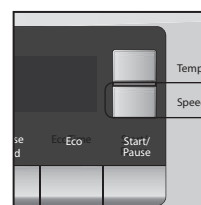


SETTING WASHING TEMPERATURE

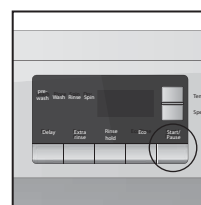
Press and hold down the temperature button until the desired temperature is selected or the symbol "-" for no water heating.

**SETTING SPIN SPEED**

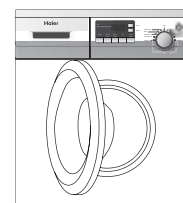
Press and hold down the speed button until the desired speed is selected or the symbol "0" is selected for no spin. See "Operational functions" on the "Control panel" pages (08 and 09) for selecting temperature and spin speed. It is advisable to select the recommended value.

**WASHING**

Press the Start/Pause button. The washing machine will operate according to the pre-set programs. The washing machine will stop operation automatically when a washing cycle ends. The "End" sign will appear on the display. Open the washer door and take out the laundry.


























**AFTER WASHING**

Turn off the water supply and unplug the power cord. Open the washer door to prevent formation of moisture and odours. Let the door open while not used.

**TIPS FOR SAVING ENERGY**

1. Collect clothes for one full wash load.
2. Avoid overloading the washing machine.
3. Pre-wash only heavily soiled clothes.
4. Reduce the amount of detergent or choose the speed up wash programs for slightly soiled clothes.
5. Choose a proper washing temperature. Modern detergents can wash with very good result already in lower temperature than 60°C. Only use higher temperature than 60°C for heavily soiled laundry.
6. Follow the dosage recommendation on the detergent package to avoid using too much detergent.

CARE CHART

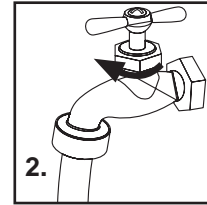
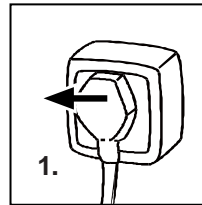
	Resistant material		Bleachable in cold water		Don't dry clean
	Delicate fabric		Do not bleach		Dry flat
	Washable at 95 °C		Iron at 200 °C		Hung to dry
	Washable at 60 °C		Iron at 150 °C		Dry on clothes hanger
	Washable at 40 °C		Iron at 100 °C		Tumble dry, normal heat
	Washable at 30 °C		Don't iron		Tumble dry, reduced heat
	Hand wash		Dry cleaning with any solvent		Don't tumble dry
	Dry clean only		Dry cleaning with perchloride		
	Wool Seal		Dry cleaning with aviation fuel		

LOAD REFERENCE

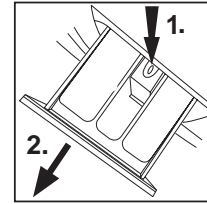
Bed sheet (single)	Cotton	Approximately 800g
Blanket	Wool	Approximately 3000g
Blended fabric clothes	/	Approximately 800g
Jackets	Cotton	Approximately 800g
Jeans	/	Approximately 800g
Overalls	Cotton	Approximately 950g
Ladies Pyjamas	/	Approximately 200g
Shirts	/	Approximately 300g
Socks	Blended fabrics	Approximately 50g
T-Shirts	Cotton	Approximately 300g
Underwear	Blended fabrics	Approximately 70g

CLEANING & CARE**AFTER WASHING**

Turn off the water supply and pull out electricity plug after each wash. Open the washer door to prevent formation of moisture and odours. If the washing machine is left idle for a long period, drain the water in the machine and replace the drain hose.

**CLEANING THE DETERGENT DRAWER**

Clean the detergent distribution drawer regularly. Swing out the drawer, flush it clean with water and then replace it.

**CLEANING THE MACHINE**

Unplug the machine during cleaning and maintenance. Use a soft cloth dampened with soap liquid to clean the machine case and rubber components. Do not use organic chemicals or corrosive solvents.

CLEANING THE FILTER

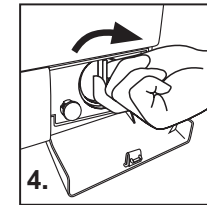
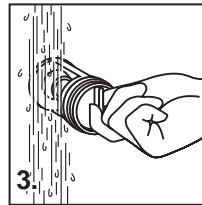
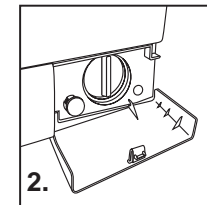
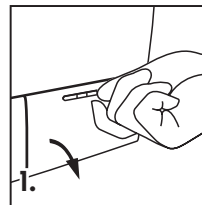
Clean the filter once a month:

1. Open the bottom cover.
2. Remove the filter by turning counterclockwise.
3. Flush the filter clean with running water.
4. Replace the filter by turning clockwise and remount the cover.

Caution:

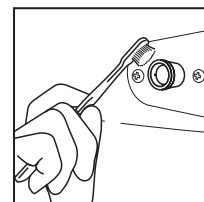
1. The filter must be in place, or it may lead to leakage.

2. Place a container under the drain pump filter, to collect any excess water that may come out of the drain pump when the filter is removed.



WATER INLET AND INLET FILTER

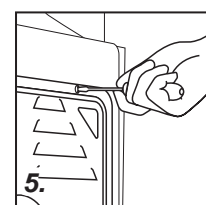
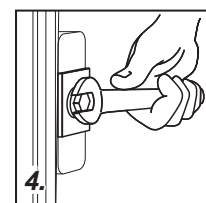
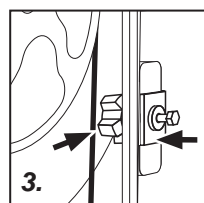
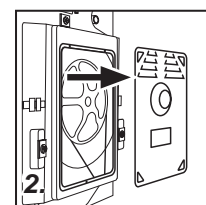
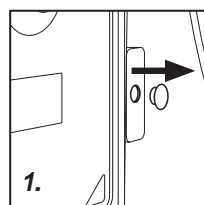
To prevent blockage to the water supply by ingress of foreign substances, clean the water inlet and inlet filter regularly.



MOVING THE MACHINE

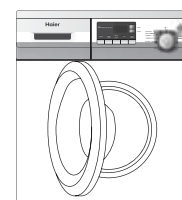
If the machine is to be moved to a distant location, replace the transportation locks removed before installation to prevent damage as shown below.

1. Remove the blanking plugs.
2. Remove the back cover
3. Insert the synthetic stabilisers and the transportation bolts.
4. Tighten the bolts with a spanner.
5. Replace the back cover.



LONG PERIODS OF DISUSE

If the washing machine is left idle for a long period, pull out the electrical plug and turn off the water supply. Open the washer door to prevent formation of moisture and odours. Let the door open while not used.



DISPLAY CODES

DISPLAY CODES AND SPECIAL FUNCTIONS

CODES	CAUSES	SOLUTIONS
Err1	→ Washer door is not properly shut.	_ Close the washer door properly
Err2	→ Drainage error.	_ Clean the filter and check the drain hose for blockage.
Err3	→ Temperature sensor error (Appears at the end of a cycle).	_ Please contact the Service Center.
Err4	→ Heater error (Appears at the end of a cycle).	_ Please contact the Service Center
Err5	→ Water inlet error.	_ Check the tap and the water pressure.
Err6	→ Motor error.	_ Please contact the Service Center.
Err7	→ Motor error.	_ Please contact the Service Center.
Err8	→ Water exceeds protective level.	_ Please contact the Service Center.
unb	→ Laundry is unevenly distributed.	_ Redistribute laundry to balance the drum.
End	→ End of wash cycle.	
1:16	→ Remaining time is 1 hour and 16 minutes.	
0:01	→ Remaining time is 1 minute.	
60	→ Preset washing temperature is 60° C.	
-	→ Cold wash.	
800	→ Preset spinning speed is 800rpm.	

→ **Control panel lock function:** Press the "Delay" and the "Start/Pause" buttons simultaneously for 3 seconds after starting a program. It can no longer be changed by operating buttons or knobs. The washing machine emits an audible signal while the control panel is locked. To unlock press the "Delay" and "Start/Pause" buttons again for 3 seconds.

→ **Power-off memory function:** In case of abrupt power failure or the need to cut off the power during a program cycle, the present settings will be saved and the preset operation will resume when the power is on again.

→ To cancel a program or select a new program and options during the wash cycles.

a) Press the "Start/Pause" button, then switch off the power and the program is automatically cancelled. Turn the program selector again to choose another program.

b) If you wish to select an option during the wash cycle, press the "Start/Pause" button, then select the desired option and press the "Start/Pause" button again.

Note: 1.The Rinse hold function can be selected directly without pressing first the "Start/Pause" button, but before the machine starts the spin program.

2.Alarm sound can be cancelled if it is needed. Please follow the instruction as below:

Switch on the washing machine and turn the program knob to spin cycle, then press the delay button and hold on for 3 seconds. The "b OFF" will be displayed on the screen which indicates that alarm sound has been canceled. To operate the above steps again so the alarm sound can be recovered and the display will show "b ON"

3.CLRF:Too much foam used in wash cycle.Washing machine can eliminate the foam automatically during spin cycle.If the washing machine fails to eliminate the excessive foam, it will end the cycle without spinning.

TROUBLESHOOTING

TROUBLESHOOTING

The following circumstances do not constitute problems. Do not contact the Service Center until the problem has been confirmed.

PROBLEM	CAUSES	SOLUTIONS
Washing machine fails to operate.	<ul style="list-style-type: none"> → Poor connection to the power supply. → Power failure. → The washer door is not properly closed. → Machine has not been switched on. 	<ul style="list-style-type: none"> _ Check connection to the power supply. _ Check the power supply. _ Close the washer door properly. _ Make sure the machine is switched on.
Washing machine cannot be filled with water.	<ul style="list-style-type: none"> → The "Start/Pause" button is not pressed. → Water tap is not turned on. → Water pressure is less than 0,03 MPa. → The inlet hose is kinked. → Water supply failure. → The program knob is not properly set. → The washer door is not properly closed. → The inlet hose filter is blocked. 	<ul style="list-style-type: none"> _ press the "Start/Pause" button. _ Turn on the water tap. _ Check water pressure. _ Check the inlet hose. _ Ensure the water supply. _ Set the program knob properly. _ Close the washer door properly. _ Unblock the inlet hose filter.
Machine is draining while being filled.	<ul style="list-style-type: none"> → The height of the drain hose is below 80 cm. → The drain hose is in water. 	<ul style="list-style-type: none"> _ Install drain hose within 80-100 cm of height. _ Make sure the drain hose is not in water.
Drainage failure.	<ul style="list-style-type: none"> → Drain hose is blocked. → Drain hose end is higher than 100 cm above the floor level. → The filter is blocked. 	<ul style="list-style-type: none"> _ Unblock the drain hose. _ Make sure the drain hose end is lower than 100 cm above floor level. _ Unblock the filter.
Strong vibration while spinning.	<ul style="list-style-type: none"> → Not all transportation bolts have been removed. → Washing machine is located on an uneven surface or is not level. → Machine load is over 7 kg. 	<ul style="list-style-type: none"> _ Remove all transportation bolts. _ Make sure the washing machine is on an even surface and levelled. _ Reduce amount of laundry in the drum.
Operation stops before completing wash cycle.	<ul style="list-style-type: none"> → Water or electricity failure. → Washing machine is in rinse hold cycle. → Washing machine gives an error message. 	<ul style="list-style-type: none"> _ Check the power supply. _ Press the rinse hold button _ Check display codes.
Excessive foam in the drum, which is spilled to the distribution drawer.	<ul style="list-style-type: none"> → The detergent is not a low-foaming type or for manual wash. → Excessive use of detergent. 	<ul style="list-style-type: none"> _ Check if your detergent is appropriate. _ Reduce amount of detergent in the distribution drawer.
Automatic adjustment of the washing time.	<ul style="list-style-type: none"> → The washing program duration will be adjusted according to the laundry load and the initial water temperature. 	<ul style="list-style-type: none"> _ This is normal and doesn't affect the functionality.
Spinning fails	<ul style="list-style-type: none"> → Unbalance of the laundry 	<ul style="list-style-type: none"> _ Add clothes or run a spinning program again.



Haier

Haier Europe Trading S.r.l.
Via De Cristoforis 12
21100 Varese - Italy

Tel + 39 0332 24511
Fax +39 0332 245146
E-mail het.srl@haiereurope.com