

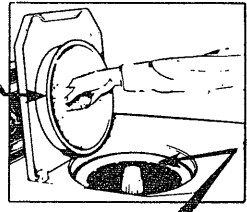
automatic clothes washer
model WWA7059V
OPERATING INSTRUCTIONS
SAVE THESE INSTRUCTIONS
WITH YOUR USE AND CARE BOOK

Before operating your washer,
READ YOUR USE AND CARE BOOK.

It contains valuable information about sorting and loading, laundry additives, stain removal and **IMPORTANT CAUTIONS FOR THE PERSONAL SAFETY OF THOSE USING THIS APPLIANCE.**

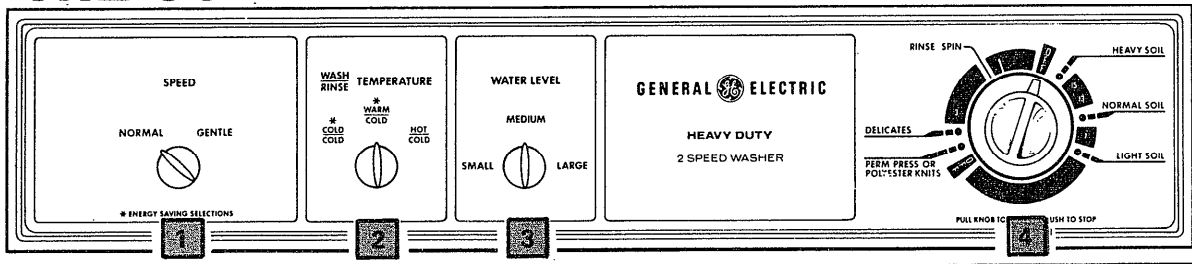
SORT AND LOAD

- Remove filter pan. (The underside of the lid provides a convenient resting place for the filter pan while loading and unloading clothes.)
- Add sorted laundry to wash basket. See your Use and Care Book for sorting details.
- A typical full load:
 - 3 double sheets
 - 3 long sleeve shirts
 - 3 bath towels
 - 4 standard size pillow cases
 - 4 T-shirts
 - 2 pair of trousers
 - 7 wash cloths
 - 5 handkerchiefs



- Replace Filter Pan and add measured amount of detergent as recommended on detergent package. NOTE: Because of variations in contents, some granular detergents may be difficult to dissolve. If this is a problem:
 - After loading the clothes, put the detergent in the wash basket next to the agitator, or,
 - Use a liquid detergent.
- Clothes level should be below the clothes retaining ring.
- For use of Bleach Dispenser and Fabric Softener Dispenser, see back page. See your Use and Care Book for use of other laundry aids.

SET THE CONTROLS Refer to **CONTROLS SETTING GUIDE** below



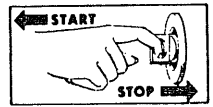
- Close lid and set controls as follows:

Lid must be closed for washer to operate. Washer will fill but will not agitate or spin with lid open.

- 1 Select WASH/SPIN SPEED.
 - 2 Select WASH/RINSE TEMPERATURE.
 - 3 Select WATER LEVEL.
- | | |
|----------------|--|
| SWITCH SETTING | CLOTHES LOAD SIZE |
| Small | Washer is less than 1/2 full of clothes. |
| Medium | Washer is 1/2 to 2/3 full. |
| Large | Washer is more than 2/3 full. |

- 4 Push Cycle Selector Knob in and turn clockwise to your selected wash cycle. See wash cycles on back page.

- Pull Cycle Selector Knob out to start washer.



The wash cycle setting can be changed at any time. Push in the Cycle Selector knob to stop the washer and reset to the new position.

CONTROLS SETTING GUIDE

	COTTONS & LINENS				PERMANENT PRESS POLYESTER KNITS SYNTHETICS & BLENDS		SPECIAL
	Work clothes dungarees, etc. with heavy soil	Work clothes dungarees, etc. with normal soil	White or Colorfast	Bright Colors	Heavy or Oily Soil	Normal or Light Soil	Delicates, Sheers or Knits
SPEED	Normal	Normal	Normal	Normal	Gentle	Gentle	Gentle
*WASH/RINSE TEMPERATURE	Hot/Cold	Hot/Cold or Warm/Cold	Hot/Cold or Warm/Cold	Warm/Cold	Hot/Cold	Warm/Cold	Warm/Cold or Cold/Cold
CYCLE SELECTOR SETTING	Heavy Soil (18 Min.)	15 Min.	Normal Soil (9 Min.)	Normal (9 Min.) or Light Soil (4 Min.)	Perm Press or Polyester Knits (9 Min.)	Delicates Setting (6 Min.)	Delicates Setting (6 Min.)

*The cooler wash settings (not below 80°F./27°C.) will save energy. See your Use and Care Book for more complete instructions.

**The wash times suggested here apply to laundering an average weight of clothes under typical home conditions. You may find that some adjustment in these times is desirable.

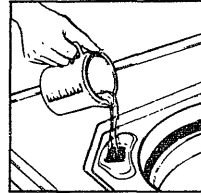
49-9353

HOW TO USE THE BLEACH DISPENSER

The Bleach Dispenser is designed for use with liquid bleach only! If you prefer to use powdered bleach, pour it into the filter pan, NOT into the bleach dispenser.

- Do NOT overflow - Avoid splashing. Undiluted bleach will cause fabric damage.

- Pour measured amount of liquid bleach directly into the BLEACH DISPENSER.

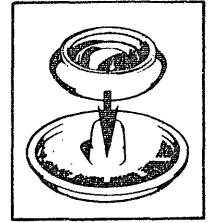


- Maximum recommended amount of liquid bleach . . .
 - Full wash: 1 1/4 cup (310 ml) liquid
 - Small wash: 2/3 cup (170 ml) liquid

NEVER POUR LIQUID BLEACH DIRECTLY ONTO CLOTHES.

HOW TO USE THE FABRIC SOFTENER DISPENSER

- Position Fabric Softener Dispenser on filter-pan.

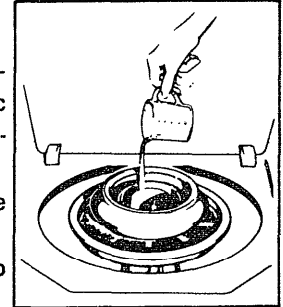


- Pour the manufacturer's recommended amount of fabric softener into a standard measuring cup.

- Add enough water to fill the cup 1/2 full.

- Pour the diluted softener into the dispenser.

- The fabric softener will automatically be dispensed at the proper time.



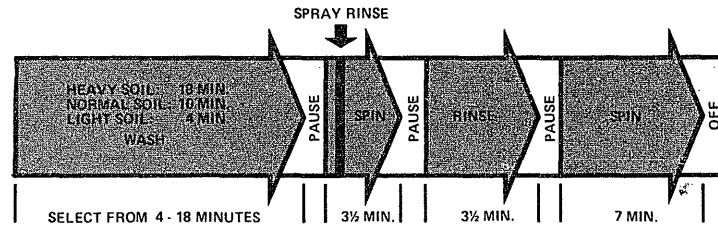
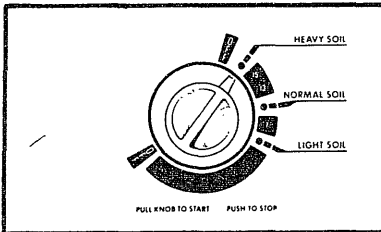
Stopping the washer during the first spin period will cause the dispenser to empty too soon.

WHAT HAPPENS IN EACH CYCLE

All times are approximate.

NORMAL CYCLES

Provides longer washing time for most cottons, linens, work and play clothes.

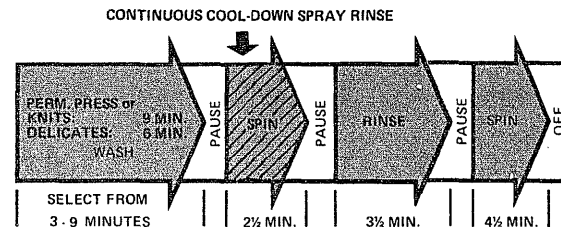
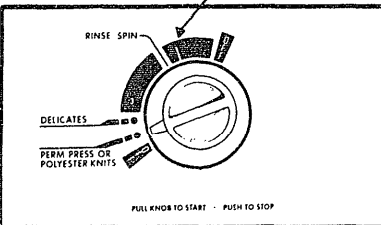


TOTAL CYCLE TIME: Varies from 20 to 34 minutes plus fill time depending on selected wash time.

POLYESTER KNITS OR PERM PRESS CYCLES

For polyester knits, delicates and permanent press. An extended cool-down spray rinse is provided to minimize the setting of wrinkles.

To use only the SPIN portion of the cycle, set dial to indicator and pull knob out to start.



TOTAL CYCLE TIME: Varies from 16 to 22 minutes plus fill time depending on selected wash time.

BEFORE YOU CALL FOR SERVICE . . . Check the TROUBLE-SHOOTING GUIDE on the back cover of your USE AND CARE BOOK. It lists many minor causes of operating problems that you can correct yourself and may save you an unnecessary service call.

GENERAL ELECTRIC COMPANY • LOUISVILLE, KENTUCKY 40225