



automatic clothes washer
model WWA7079V
OPERATING INSTRUCTIONS

**SAVE THESE INSTRUCTIONS
WITH YOUR USE AND CARE BOOK**

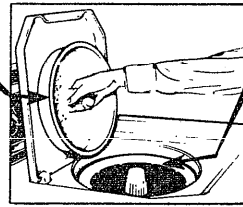
Before operating your washer,
READ YOUR USE AND CARE BOOK.

It contains valuable information about sorting and loading, laundry additives, stain removal and **IMPORTANT CAUTIONS FOR THE PERSONAL SAFETY OF THOSE USING THIS APPLIANCE.**

SORT AND LOAD

- Remove filter pan and Mini-Basket™ tub. (The underside of the lid provides a convenient resting place for the filter pan.) Do not use the Mini-Basket tub when doing regular loads. (See page 2 for use of Mini-Wash® system.)
- Add sorted laundry to wash basket. See your Use and Care Book for sorting details.
- A typical full load:

3 double sheets	4 T-shirts
3 long sleeve shirts	2 pair of trousers
3 bath towels	7 wash cloths
4 standard size pillow cases	5 handkerchiefs

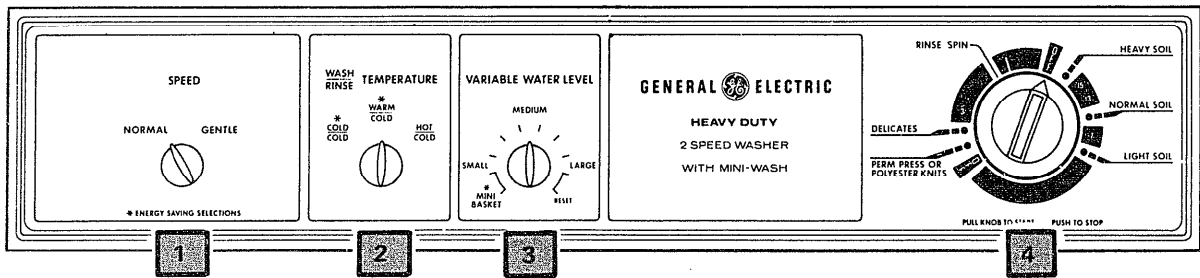


- Clothes level should be below the clothes retaining ring.
- Replace Filter Pan and add measured amount of detergent as recommended on detergent package. NOTE: Because of variations in contents, some granular detergents may be difficult to dissolve. If this is a problem:

- After loading the clothes, put the detergent in the wash basket next to the agitator, or,
- Use a liquid detergent.
- For use of Bleach Dispenser and Fabric Softener Dispenser, see page 4.

SET THE CONTROLS

Refer to CONTROLS SETTING GUIDE on next page.



- Close lid and set controls as follows:

Lid must be closed for washer to operate. Washer will fill but will not agitate or spin with lid open.

- 1 Select WASH/SPIN SPEED.

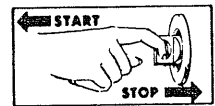
- 2 Select WASH/RINSE TEMPERATURE.

- 3 Select WATER LEVEL.

SMALL — Washer is less than 1/3 full of clothes.
MEDIUM — Between 1/3 and 2/3 full.
LARGE — Over 2/3 full.
RESET — To increase level, turn Knob to "Reset" and then to new level.
MINI-BASKET — See page 2 for use of MINI-WASH system.

- 4 Push Cycle Selector Knob in and turn clockwise to your selected wash cycle. See wash cycles on page 3.

- Pull Cycle Selector Knob out to start washer.



The wash cycle setting can be changed at any time. Push in the Cycle Selector knob to stop the washer and reset to the new position.

49-9354

CONTROLS SETTING GUIDE

	COTTONS & LINENS				PERMANENT PRESS POLYESTER KNITS SYNTHETICS & BLENDS	SPECIAL	
	Work clothes dungarees, etc. with heavy soil	Work clothes dungarees, etc. with normal soil	White or Colorfast	Bright Colors	Heavy or Oily Soil	Normal or Light Soil	Delicates, Sheers or Knits
SPEED	Normal	Normal	Normal	Normal	Gentle	Gentle	Gentle
*WASH/RINSE TEMPERATURE	Hot/Cold	Hot/Cold or Warm/Cold	Hot/Cold or Warm/Cold	Warm/Cold	Hot/Cold	Warm/Cold	Warm/Cold or Cold/Cold
**CYCLE SELECTOR SETTING	Heavy Soil (18 Min.)	15 Min.	Normal Soil (9 Min.)	Normal (9 Min.) or Light Soil (4 Min.)	Perm Press or Polyester Knits (9 Min.)	Delicates Setting (6 Min.)	Delicates Setting (6 Min.)

*The cooler wash settings (not below 80°F./27°C.) will save energy. See your Use and Care Book for more complete instructions.

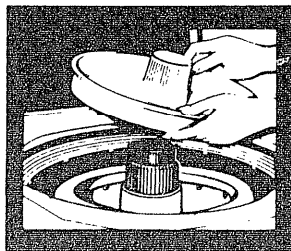
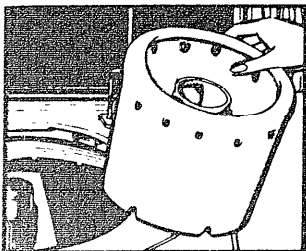
**The wash times suggested here apply to laundering an average weight of clothes under typical home conditions. You may find that some adjustment in these times is desirable.

HOW TO USE THE MINI-WASH® SYSTEM

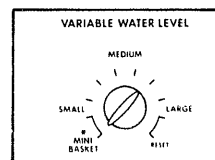
The Mini-Wash system is especially designed for easy and economical laundering of delicate hand-washables and for small loads (up to 2 lbs.) of regular fabrics. It may be used for articles such as lingerie, ladies hosiery, foundation garments, blouses, sweaters, socks, shirts, baby clothes, and similar items. Also, special articles such as canvas tennis shoes and stuffed toys may be washed in the Mini-Basket tub.

Ladies hosiery and other easily tangled items should always be washed separately. To minimize tangling, use of a net Laundry Bag is recommended.

- The MINI-BASKET TUB can be used with the REGULAR, POLYESTER KNITS or PERM PRESS CYCLES.
- When using the MINI-BASKET TUB, DO NOT wash clothes in the regular basket at the same time.



- Remove filter pan.
- Place Mini-Basket tub on agitator. (Pulling the agitator toward the front of the machine will provide for easier installation and removal of the Mini-Basket tub.)
- Load clothes in Mini-Basket tub. Observe sorting details in Use and Care Book.
- Replace filter pan.
- Put ¼ to ⅓ cup (60 to 80 ml) detergent in filter pan.
- For use of BLEACH and FABRIC SOFTENER, see instructions on page 4.
- Close lid and set controls.
 - WATER LEVEL, set to "Mini-Basket" position.
 - SPEED, TEMPERATURE, and CYCLE, follow instructions on page 1.
- Pull Cycle Selector Knob out to start washer.

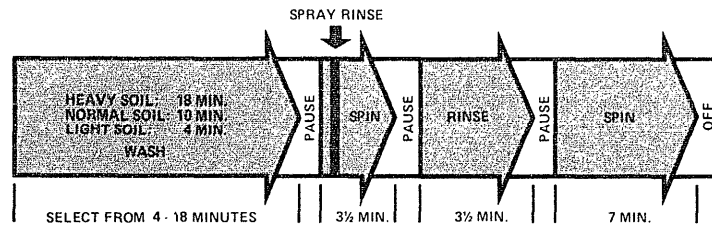
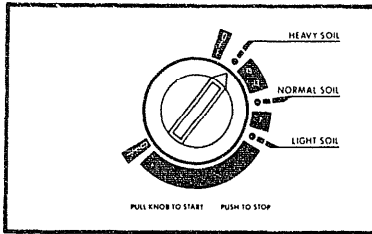


WHAT HAPPENS IN EACH CYCLE

All times are approximate.

REGULAR CYCLES

Provides longer washing time for most cottons, linens, work and play clothes.

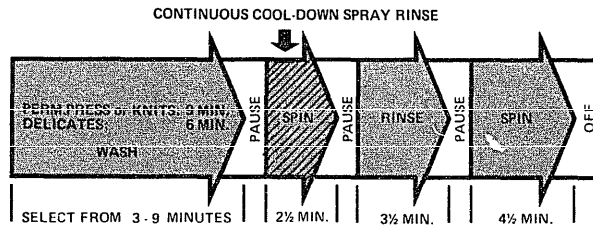
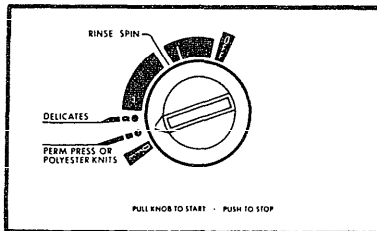


TOTAL CYCLE TIME: Varies from 20 to 34 minutes plus fill time depending on selected wash time.

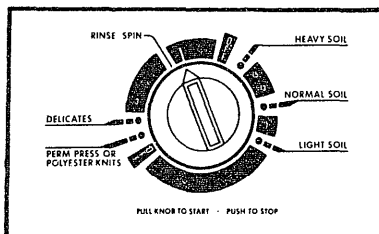
POLYESTER KNITS OR PERM PRESS CYCLES

For polyester knits, delicates and permanent press.

An extended cool-down spray rinse is provided to minimize the setting of wrinkles.



TOTAL CYCLE TIME: Varies from 16 to 22 minutes plus fill time depending on selected wash time.

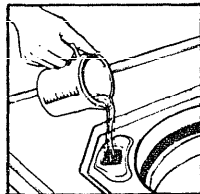


TO USE ONLY THE SPIN PORTION OF THE CYCLE, set cycle selector to indicator as shown and pull knob out to start.

HOW TO USE THE BLEACH DISPENSER

The Bleach Dispenser is designed for use with liquid bleach only! If you prefer to use powdered bleach, pour it into the filter pan, NOT into the bleach dispenser.

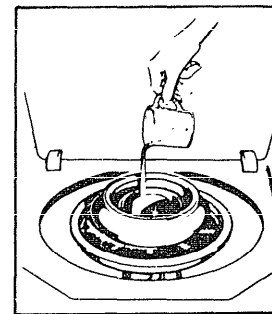
- Do NOT overflow-Avoid splashing. Undiluted bleach will cause fabric damage.
- Pour measured amount of liquid bleach directly into the BLEACH DISPENSER.
- Maximum recommended amount of liquid bleach . . .
 - Full wash: 1 1/4 cup (310 ml) liquid
 - Small wash: 2/3 cup (170 ml) liquid
 - Mini-Wash*: 1/4 cup (60 ml) liquid



*NEVER POUR LIQUID BLEACH DIRECTLY ONTO CLOTHES OR INTO THE MINI-BASKET TUB.

HOW TO USE THE FABRIC SOFTENER DISPENSER

- Position Fabric Softener Dispenser on filter-pan.
- Pour the manufacturer's recommended amount of fabric softener into a standard measuring cup.
- Add enough water to fill the cup 1/2 full.
- Pour the diluted softener into the dispenser.
- The fabric softener will automatically be dispensed at the proper time.



Stopping the washer during the first spin period will cause the dispenser to empty too soon.

For use with Mini-Wash system:

- Use only one teaspoon of concentrated softener or one tablespoon of diluted softener.

BEFORE YOU CALL FOR SERVICE . . . Check the TROUBLESHOOTING GUIDE on the back cover of your USE AND CARE BOOK. It lists many minor causes of operating problems that you can correct yourself and may save you an unnecessary service call.

Product improvement is a continuing endeavor at General Electric. Therefore, specifications are subject to change without notice. A General Electric Warranty applies to this product.



GENERAL ELECTRIC COMPANY
LOUISVILLE, KENTUCKY 40225

GENERAL  ELECTRIC

WWA7079V

Part No. 141A7449P350 10-79

Pub. No. 49-9354