

**automatic clothes washer
model WWA5509V
OPERATING INSTRUCTIONS**

**SAVE THESE INSTRUCTIONS
WITH YOUR USE AND CARE BOOK**

Before operating your washer,
READ YOUR USE AND CARE BOOK.

It contains valuable information about sorting and loading, laundry additives, stain removal and **IMPORTANT CAUTIONS FOR THE PERSONAL SAFETY OF THOSE USING THIS APPLIANCE.**

SORT AND LOAD

- Remove filter pan. (The underside of the lid provides a convenient resting place for the filter pan while loading or unloading clothes.)

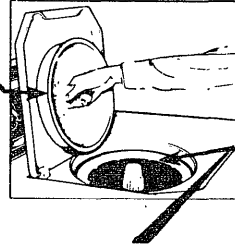
- Add sorted laundry to wash basket. See your Use and Care Book for sorting details.

- A typical full load:

- 3 double sheets
- 3 long sleeve shirts
- 3 bath towels
- 4 standard size pillow cases

- 4 T-shirts
- 2 pair of trousers
- 7 wash cloths
- 5 handkerchiefs

- Replace Filter Pan and add measured amount of detergent as recommended on detergent package. **NOTE:** Because of variations in contents, some granular detergents may be difficult to dissolve. If this is a problem:



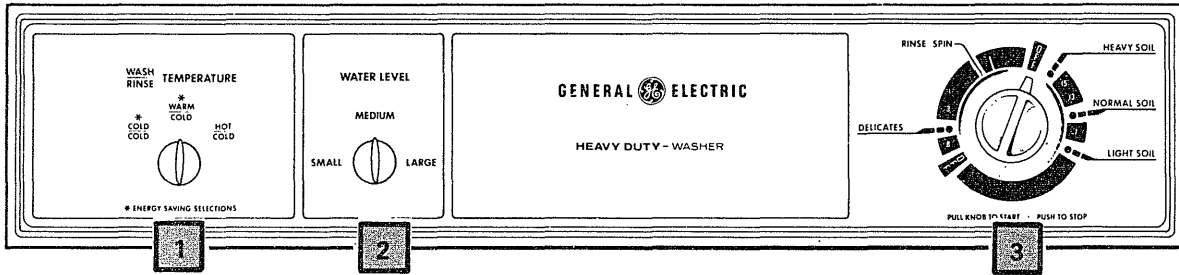
After loading the clothes, put the detergent in the wash basket next to the agitator, or,

- Use a liquid detergent.

- Clothes level should be below the clothes retaining ring.
- For use of your **FABRIC SOFTENER DISPENSER**, see back page. For use of bleach and other laundry aids, see your Use and Care Book.

SET THE CONTROLS

Refer to **CONTROLS SETTING GUIDE** below.



- Close lid and set controls as follows:

Lid must be closed for washer to operate. Washer will fill but will not agitate or spin with lid open.

1 Select **WASH/RINSE TEMPERATURE.**

2 Select **WATER LEVEL.**

3 Push **Cycle Selector Knob** in and turn clockwise to your selected wash cycle. See wash cycles on back page.

- Pull **Cycle Selector Knob** out to start washer.



SWITCH SETTING	CLOTHES LOAD SIZE
Small	Washer is less than 1/2 full of clothes.
Medium	Washer is 1/2 to 2/3 full.
Large	Washer is more than 2/3 full.

The wash cycle setting can be changed at any time. Push in the Cycle Selector knob to stop the washer and reset to the new position.

CONTROLS SETTING GUIDE

	COTTONS & LINENS				PERMANENT PRESS SYNTHETICS AND BLENDS		SPECIAL Delicates, Sheers, or Knits
	Work clothes dungarees, etc. with heavy soil	Work clothes dungarees, etc. with normal soil	White or Colorfast	Bright Colors	Heavy or Oily Soil	Normal or Light Soil	
*WASH/RINSE TEMPERATURE	Hot/Cold	Hot/Cold or Warm/Cold	Hot/Cold or Warm/Cold	Warm/Cold	Hot/Cold	Warm/Cold	Warm/Cold or Cold/Cold
**CYCLE SELECTOR SETTING	Heavy Soil (18 Min.)	15 Min.	Normal Soil (9 Min.)	Normal (9 Min.) or Light Soil (4 Min.)	8 Min. (Delicates Cycle)	Delicates Setting (6 Min.)	Delicates Setting (6 Min.)

*The cooler wash settings (not below 80°F./27°C.) will save energy. See your Use and Care Book for more complete instructions.

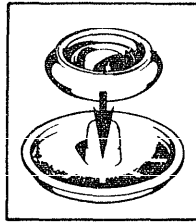
**The wash times suggested here apply to laundering an average weight of clothes under typical home conditions. You may find that some adjustment in these times is desirable.

UC17

49-9352

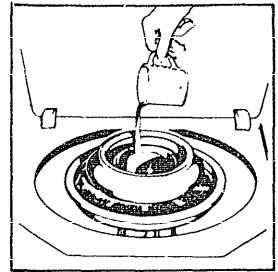
HOW TO USE THE FABRIC SOFTENER DISPENSER

- Position Fabric Softener Dispenser on filter-pan.



Stopping the washer during the first spin period will cause the dispenser to empty too soon.

- Pour the manufacturer's recommended amount of fabric softener into a standard measuring cup.
- Add enough water to fill the cup 1/2 full.
- Pour the diluted softener into the dispenser.
- The fabric softener will automatically be dispensed at the proper time.

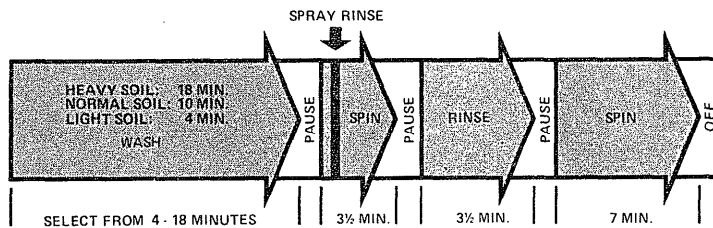
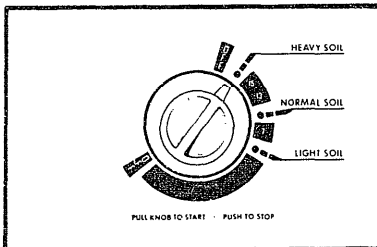


WHAT HAPPENS IN EACH CYCLE

All times are approximate.

NORMAL CYCLES

Provides longer washing time for most cottons, linens, work and play clothes.

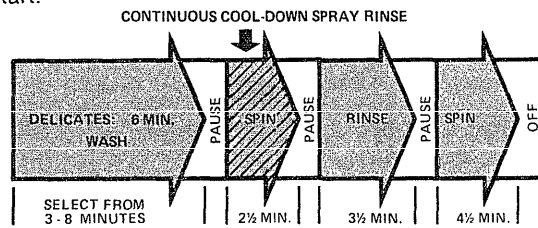
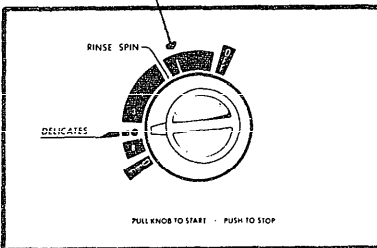


TOTAL CYCLE TIME: Varies from 20 to 34 minutes plus fill time depending on selected wash time.

DELICATE CYCLES

For delicates and permanent press. An extended cool-down spray rinse is provided to minimize the setting of wrinkles.

To use only the SPIN portion of the cycle, set dial to **indicator** and pull knob out to start.



TOTAL CYCLE TIME: Varies from 16 to 21 minutes plus fill time depending on selected wash time.

BEFORE YOU CALL FOR SERVICE . . . Check the TROUBLE-SHOOTING GUIDE on the back cover of your USE AND CARE BOOK. It lists many minor causes of operating problems that you can correct yourself and may save you an unnecessary service call.

GENERAL ELECTRIC COMPANY
LOUISVILLE, KENTUCKY 40225

GENERAL  ELECTRIC

WWA5509V

Product improvement is a continuing endeavor at General Electric. Therefore, specifications are subject to change without notice. A General Electric Warranty applies to this product.

