



# COVERT ASSAULT

.68 CALIBER PAINTBALL MARKER

## OWNER'S MANUAL

US PATENTS PENDING

**Contains:**

- Safety Information
- Annotated Diagram
- Warranty Information
- Trouble Shooting Guide
- Operating Instructions

This safety alert symbol indicates important safety messages in this manual. When you see this symbol, be alert to the possibility of personal injury and carefully read the message that follows.

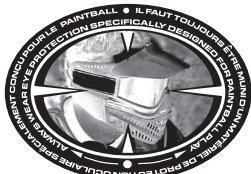
**WARNING:** DO NOT LOOK DOWN THE BREACH OR BARREL OF THE MARKER WHILE GAS SOURCE IS ATTACHED. WHEN PROPERLY INSTALLED THE BARREL PLUG PROTECTS YOU AND EVERYONE WITHIN RANGE. USE THE BARREL PLUG WHENEVER YOU ARE NOT ACTIVELY ENGAGED IN A PAINTBALL GAME.

**WARNING:** THIS IS NOT A TOY. MISUSE MAY CAUSE SERIOUS INJURY OR DEATH. EYE PROTECTION DESIGNED FOR PAINTBALL USE MUST BE WORN BY THE USER AND ANY PERSON WITHIN RANGE. RECOMMEND AT LEAST 18 YEARS OLD TO PURCHASE, 14 YEARS OLD TO USE WITH ADULT SUPERVISION, OR 10 YEARS OLD TO USE ON PAINTBALL FIELDS MEETING ASTM-STANDARD F1777-02. READ OPERATION MANUAL BEFORE USING.

**WARNING:** NEVER SHOOT AT ANYONE WITHOUT PROPER PROTECTIVE EQUIPMENT FOR EYES, EARS, THROAT AND HEAD, WHICH MUST BE WORN AT ALL TIMES. EYE PROTECTION MUST BE DESIGNED SPECIFICALLY FOR PAINTBALL. FAILURE TO FOLLOW THESE SAFETY PRECAUTIONS MAY RESULT IN BODILY INJURY INCLUDING BLINDNESS AND DEAFNESS.

Welcome to the JT SPORTS® team and thank you for purchasing this high quality JT® paintball marker.

We at JT® stand committed to providing you with the best product and service available. Your new marker is designed and manufactured to provide ease of maintenance with trouble free performance. We ask that you read this manual to obtain the maximum enjoyment and safety of your purchase.



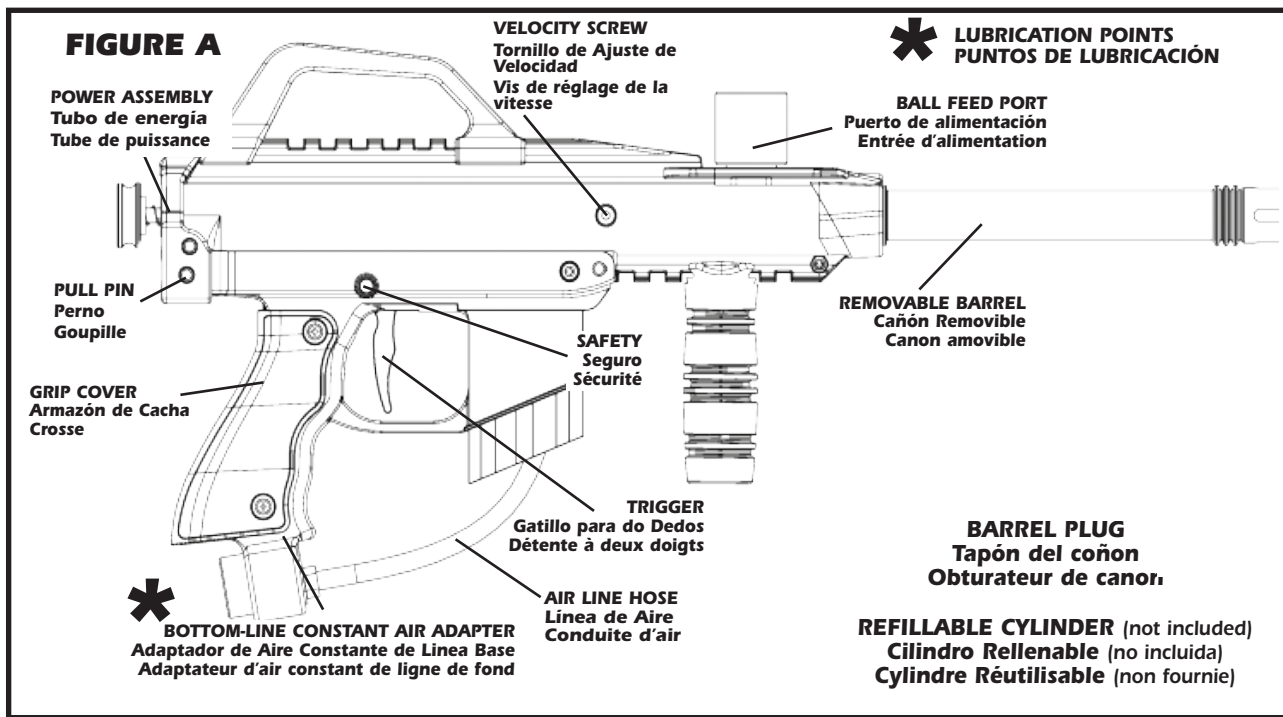
Call 800.755.5061 or visit our web site at [www.jtsports.com](http://www.jtsports.com) if you should need an Illustrated Parts List.

JT Sports LLC.  
1201 S.E. 30th St., Bentonville, AR 72712, U.S.A.  
Fax (479) 464-8701  
[www.jtsports.com](http://www.jtsports.com)

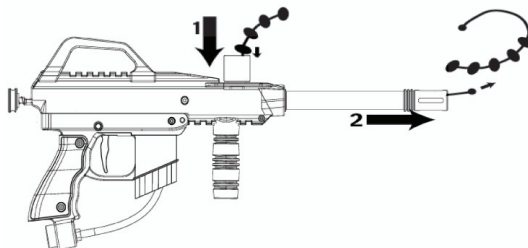
### RULES OF SAFE PAINTBALL MARKER HANDLING

- Always wear proper eye, face and ear protection designed specifically for paintballs.
- Never shoot a person who is not wearing proper protection.
- Treat every paintball marker as if it were loaded.
- Never look down the barrel of the marker.
- Never point the paintball marker at anything you don't wish to shoot.
- Keep the paintball marker on safe until ready to shoot.
- Keep the barrel plug in the paintball marker's muzzle when not shooting.
- Always remove gas source before disassembly.
- Store the paintball marker unloaded and degassed in a locked place.
- Follow warnings listed on gas source for handling and storage.
- Never use anything other than .68 caliber paintballs.
- Do not shoot fragile objects such as windows.
- Paintballs may cause staining of some porous surfaces such as brick, stucco and wood.
- Always measure velocity (speed of the paintball before it exits the barrel) before playing paintball.
- Never shoot at velocities in excess of 300 feet per second.
- Never engage in vandalism.
- Do not use marker for drive-by shootings.
- Do not modify your marker's pressurized air system or cylinder in any way.

P/N 143140 - 000 12/09



Use a barrel squeegee to clean broken paintballs from your marker's barrel. We recommend the Viewloader® Proflex Squeegee #5012.



DO NOT RETURN THIS MARKER TO YOUR RETAILER. FOR ASSISTANCE CALL 1-800-755-5061.

### WARRANTY INFORMATION

**WARRANTY: LIMITED 90 DAY WARRANTY (ORIGINAL PURCHASE RECEIPT REQUIRED)**

For 90 days from date of purchase, JT SPORTS® will repair or replace this marker free of charge if defective in material or workmanship. This warranty gives you specific legal rights. You may also have other rights which may vary from state to state. Service is available from authorized JT SPORTS Service Centers. A list of these is available at JT SPORTS website at [www.jtsports.com](http://www.jtsports.com) or by calling JT SPORTS® at 1-800-755-5061. These Service Centers generally offer the quickest service.

If you would rather return your marker to JTSports® please call customer service at 1-800-755-5061 for return authorization number and shipping address. (Authorization number must be visible on outside of shipping package to be accepted.)

Do not return any products via non-trackable services such as regular mail or parcel post. Such products may become lost and JT SPORTS® Inc. will not be responsible for replacement.

### PAINTBALL MARKERS OUT-OF-WARRANTY

Authorized Service Centers will gladly repair any markers out of warranty for a nominal charge to cover parts and labor. Repairs made by Service Centers will usually be faster and less expensive than those sent back to the factory. Go to [www.jtsports.com/service](http://www.jtsports.com/service) for service center locations near you. **Prior to shipping out of warranty markers, you must first call customer service at 1-800-755-5061 for return authorization number and shipping address. (Authorization number must be visible on outside of shipping package to be accepted.)** Any out of warranty Marker returned to JT SPORTS® must be shipped prepaid and include the repair fee. Please call the Customer Service number for current repair fees. JT Sports® will repair or replace the marker with a reconditioned unit of the same model. If payment is not included, you will be billed for the repair fee plus a \$4.00 invoicing fee. Upon receipt of payment, the marker or its replacement will be shipped to you. In the event that the marker includes no means of contacting the sender or no payment for repairs is received within 60 days of billing, the ownership of the marker will be forfeited and it will be disposed of at the discretion of JT SPORTS® LLC.

### SPECIAL INSTRUCTIONS Maintenance/Operation

Follow all procedures listed in this manual. In addition, periodically check the steel braided hose assembly for leaks or fraying.

#### Safety

Do not allow the steel braided hose to be pinched in any way. The hose is durable but is not intended to act as a trigger guard.

**NOTE:** Follow the "Unloading your Marker" instructions in this owner's manual.

### FIELD STRIP GUIDE

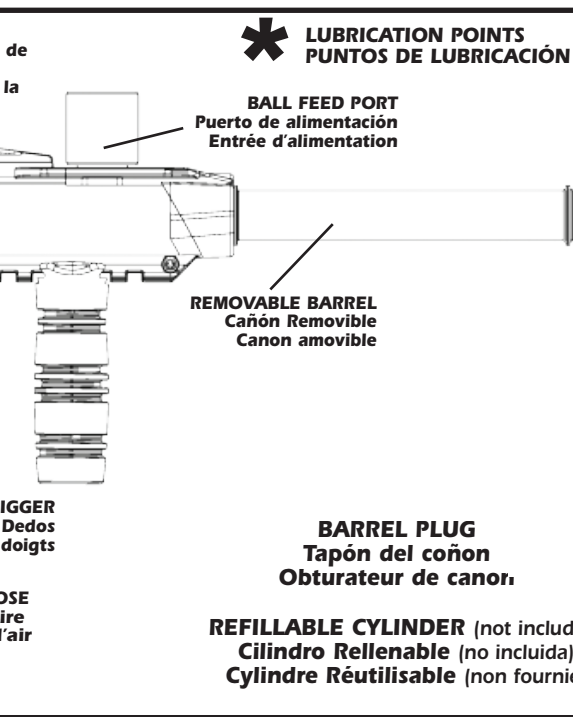
#### Bolt and Striker Removal

##### STEP 1. EYE PROTECTION:

Make sure everyone within range (200 yards) is properly protected from paintball impacts.

##### STEP 2. Remove gas supply from marker.

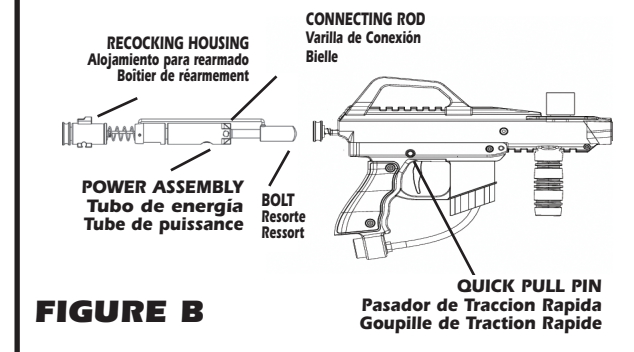
**STEP 3.** Make sure cocking bolt is in the forward position. Pull trigger to release if necessary.



**STEP 2.** Reassemble the Powertube Assembly, connecting rod and Bolt per the exploded diagram (Figure B) Note: Inspect and lubricate o-rings and bolt with approved lubricant before reassembly. Should the striker o-ring show wear or damage replace (use JT Repair kit 0852-00)

### FIELD STRIP REASSEMBLY

Follow the steps above in reverse order. Lubricate all wear points and o-rings with mineral oil only.



**STEP 4.** Adjust the 1/8" hex velocity screw clockwise/inward until the screw clears the body of the marker.  
**STEP 5.** Remove the single front grip frame pull pin and top rear grip frame pull pin. Drop the front of the grip frame down.  
**STEP 6.** Grab the rear cocking house and pull out internals. Do not force items to come out. Use caution when removing items.

### DO'S AND DON'TS OF CARE AND MAINTENANCE

**NOTE:** Any cosmetic or mechanical changes to product will void warranty. Follow these easy points to keep your marker in top shape for years to come.

#### DO'S

- DO read owners manual thoroughly before using marker and for complete disassembly and cleaning instructions.
- DO lubricate o-rings using 3 drops of mineral oil in the ASA adapter with each change of gas source (tank), or marker will dry out and cause it to not recock after the first shot or after rapid firing.
- DO familiarize yourself with the parts drawing prior to any disassembly.
- DO put marker parts on cloth to avoid losing parts or parts falling down onto dirt or sand when disassembling.
- DO lubricate o-rings with mineral oil immediately after cleaning. See [Fig. F] for lubrication points.

#### DON'TS

- DON'T return this marker to retailer. Call 1-800-755-5061.
- DON'T DISASSEMBLE marker if you are unfamiliar with marker maintenance. (Call customer service at 1-800-755-5061 or visit our website at [www.jtsports.com](http://www.jtsports.com) for assistance).
- DON'T use lubricants other than mineral oil. (For questions about proper lubricants consult the web page or customer service at 1-800-755-5061)
- DON'T immerse marker in water. (Marker parts may be cleaned by wiping with a soft cloth or paper towel).

### OPERATING INSTRUCTIONS

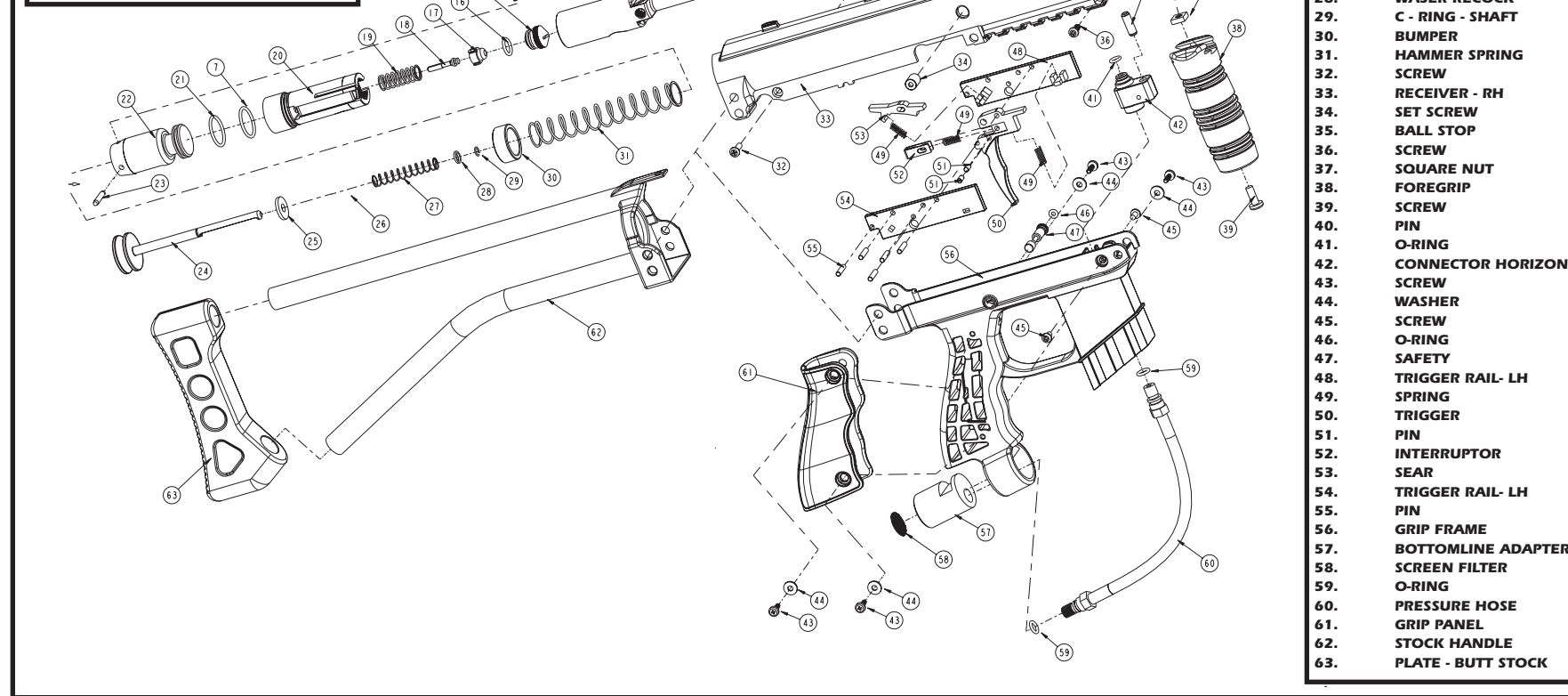
**WARNING:** Be sure the paintball marker is always pointed in a safe direction. Read the following operating instructions and WITHOUT LOADING ANY PAINTBALLS proceed several times through the operating steps with your paintball marker (dry fire the paintball marker at a safe target) so that you will be able to operate the marker properly and safely.

**STEP 1. EYE PROTECTION:** Make sure everyone within range (200 yards) is properly protected from paintball impacts.

**STEP 2. PUT ON "SAFE":** Push safety from left to right; no red band showing. Make sure barrel plug is placed securely in muzzle of marker.

**STEP 3. COCK:** Cock marker by pulling cocking handle fully back until locked in rear position. This marker is a semi-automatic marker, which will re-cock itself after firing when working properly.

- | ITEM | DESCRIPTION                     |
|------|---------------------------------|
| 1.   | BARREL                          |
| 2.   | O-RING                          |
| 3.   | DETENT BALL                     |
| 4.   | DETENT SPRING                   |
| 5.   | FILED STRIP PIN                 |
| 6.   | FEEDNECK                        |
| 7.   | O-RING                          |
| 8.   | FIELD STRIP PIN                 |
| 9.   | RECEIVER- LH                    |
| 10.  | HANDLE                          |
| 11.  | SCREW                           |
| 12.  | BOLT                            |
| 13.  | VALVE SLEEVE                    |
| 14.  | LINKAGE ARM                     |
| 15.  | VALVE PLUG                      |
| 16.  | O-RING                          |
| 17.  | VALVE STEM WITH MOLDED CUP SEAL |
| 18.  | VALVE STEM                      |
| 19.  | VALVE SPRING                    |
| 20.  | VALVE BODY                      |
| 21.  | O-RING                          |
| 22.  | STRIKER                         |



**STEP 4. ATTACH GAS SOURCE:** Marker can be used with refillable compressed air/N2 cylinder from JT or WGP. This cylinder is not included with marker.

**NOTE:** Add 3 drops of mineral oil to the ASA adapter prior to attaching the refillable cylinder. Check the website at: [www.jtsports.com/service](http://www.jtsports.com/service) for approved lubricants.

#### STEP 5. LOAD PAINTBALLS:

**A)** Insert loader (not included with all packaging) into ball feed port (Fig C) on the marker. To remove twist and pull upward quickly.

**NOTE:** The loader to ball feed port fit is purposely tight. (RECOMMEND Viewloader® Quantum™, eVlution II™ or Revolution™ electronic loader)

**B)** Pour paintballs into loader. **NOTE:** Paintballs are gravity fed from loader to the marker each time the trigger is pulled. Too rapid a rate of fire, broken balls or too many balls in loader may cause subsequent balls to break and will adversely affect the paintball marker's accuracy. Use a squeegee to clean inside the paintball marker's barrel. (RECOMMEND Brass Eagle®, Viewloader® JT®, or WGP® brand .68 caliber paintballs.) Paintballs should be stored in a cool, dry place in sealed plastic bags. Do not subject to freezing, excessive heat, humidity or store in direct sunlight. These conditions may cause ball breakage and/or poor feeding.

**STEP 6.** Remove barrel plug and take off safe by pressing safety from right side of paintball marker until red band is showing.

**STEP 7. VERIFY VELOCITY:** Verify that the paintball velocity is below 300 feet per second or less if required by playing field. Velocity may be adjusted by turning the velocity adjustment screw (See Fig B). Using a 1/8" allen key (included) turn screw clockwise to decrease velocity and counterclockwise to increase velocity.

**STEP 8. FIRE:** Paintball marker is now ready to fire. Push safety left till red band is showing, the paintball marker is now ready to fire.

**ADJUSTABLE FOREGRIP:** The grip is repositionable for length (Fig D) and is designed to improve your grip on the marker during moving and shooting.

**FIGURE C (a)**

**FIGURE C (b)**

**FIGURE D**

**DUAL RAIL SYSTEM-** The rail system is for use with 3/8" dove tail and 7/8" (Picanny style) rail accessories. The 3/8" system is commonly used for .22 and airgun type accessories. The 7/8" Picanny style is use with military and large caliber firearms type accessories. Note: Check all local, state and federal laws, as well as with field owners to make sure your marker accessories are suitable for paintball play. These accessories may include tactical flashlights, sighting systems, bipod, foregrip and carry handle.

### FIGURE E

- | ITEM | DESCRIPTION          |
|------|----------------------|
| 23.  | PIN                  |
| 24.  | SHAFT - RECOCKING    |
| 25.  | BUMPER               |
| 26.  | RECOCKING HOUSING    |
| 27.  | SPRING RECOCK        |
| 28.  | WASER RECOCK         |
| 29.  | C - RING - SHAFT     |
| 30.  | BUMPER               |
| 31.  | HAMMER SPRING        |
| 32.  | SCREW                |
| 33.  | RECEIVER - RH        |
| 34.  | SET SCREW            |
| 35.  | BALL STOP            |
| 36.  | SCREW                |
| 37.  | SQUARE NUT           |
| 38.  | FOREGRIP             |
| 39.  | SCREW                |
| 40.  | PIN                  |
| 41.  | O-RING               |
| 42.  | CONNECTOR HORIZONTAL |
| 43.  | SCREW                |
| 44.  | WASHER               |
| 45.  | SCREW                |
| 46.  | O-RING               |
| 47.  | SAFETY               |
| 48.  | TRIGGER RAIL- LH     |
| 49.  | SPRING               |
| 50.  | TRIGGER              |
| 51.  | PIN                  |
| 52.  | INTERRUPTOR          |
| 53.  | SEAR                 |
| 54.  | TRIGGER RAIL- LH     |
| 55.  | PIN                  |
| 56.  | GRIP FRAME           |
| 57.  | BOTTOMLINE ADAPTER   |
| 58.  | SCREEN FILTER        |
| 59.  | O-RING               |
| 60.  | PRESSURE HOSE        |
| 61.  | GRIP PANEL           |
| 62.  | STOCK HANDLE         |
| 63.  | PLATE - BUTT STOCK   |

Symptom	Cause	Solution
Loader Is Not Functioning Or Is Losing Maximum Performance	Depleted Or Low Batteries	Replace Batteries
Loader Is Not Operating Properly	Broke Paint In The Loader	Clean The Loader
I Have Replaced Batteries And Cleaned My Loader And It Still Will Not Operate	Damaged Electronics	Visit A Local Service Center Or Contact JT For Assistance At 800-755-5061
The Loader jams	Too Many Paintballs In The Loader or low quality out of round paintballs	Leave Some Room For Ball Movement When Firing The Loader

International Service Center List		
Liste de Centre de Service-Vente International		
Lista de Centros de Servicio Internacionales		
<p>Puerto Rico: Amado Gonzalez Villa Flores E-9 Urb. Los Frailes Guaynabo, PR 00969 787-990-8258 FAX: 787-720-5112 amagon@prcc.net</p> <p>Canada: PBL Action Sports 7155 Rte Transcanadienne St-Laurent, Quebec, Canada, H4T 1A2 Tel#1-888-595-5993 Fax#514-595-5571 www.buytbl.com Contact-phil@buytbl.com</p> <p>Mexico: Security Private Planet SA de CV Bvd. Interlomas No. 5 Local G-6 Col. Lomas Anahuac Huixquilucan Estado de Mexico CP 52760 52.55.5290.8190 FAX: 52.55.5290.8353 info@xtreplanet.com www.xtreplanet.com</p>	<p>South Africa: Paintball City South Africa P O Box 3090 Symrindge 1420 27 11 828.7583 FAX: 27 11 828.7516 info@paintballcity.co.za www.paintballcity.co.za</p> <p>Europe: JT Europe GmbH Am Strassbach 1 61169 Friedberg/Hessen Germany Phone: +49-(0)6031-7375-0 www.jt-europe.com</p>	<p>New Zealand: Kilwell Sports 490 Te Ngae Road Rotorua 64.7.345.9094 FAX:64.7.345.5149 sports@kilwell.co.nz www.kilwell.co.nz</p> <p>Brazil: Mercenarios Rua Roma, 620 C.J. 124A Sao Paulo SP 05050-090 55.11.3871.1468 mercenarios@mercenarios.com.br www.mercenarios.com.br</p> <p>Japan: K2 Japan Corporation A Nishi-Sando Yamaki Bldg 3 28 6 Yoyogi Shibuya-ku Tokyo 151-0053 81.3.3320.7822 FAX: 81.3.3320.8771</p>

