



PLEASE RECYCLE EMPTY CARTON

EPA Reg. No. 64240-33 EPA Est. No. 85632-KOR-001

DISTRIBUTED BY & ©2013 COMBAT INSECT CONTROL SYSTEMS

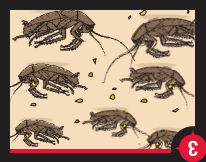
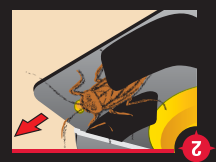
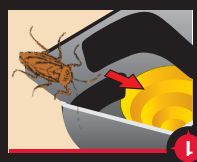
GUARANTEED TO WORK OR YOUR MONEY BACK! Call the COMBAT® HELPLINE at 1-800-426-6228 for information.

Roaches share the bait, killing other roaches and destroying the nest.

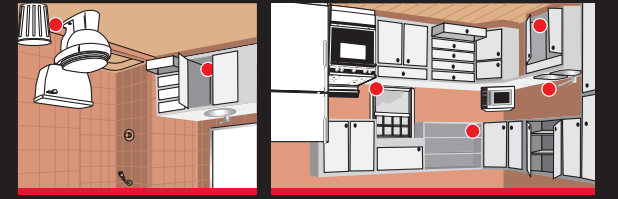
Roaches take the bait back to the nest. Las cucarachas transportan el cebo a su nido.

Roaches enter the bait station and eat the bait. Las cucarachas entran en la estación de cebo y comen el cebo.

HOW COMBAT® SOURCE KILL MAX^{R1} WORKS:



- 1. Use all 12 baits. Break baits apart from plastic frame. Do not remove or puncture labels on bait stations.
2. Place baits wherever you see or have seen roaches. Then place additional baits about 1 1/2 feet away. Some of the most likely roach hiding places are shown in the diagrams above. Do not use in beehives.
3. Place baits properly so they are touching walls or corners. Do not use sprays or foggers around bait stations.
4. Replace all 12 baits every 6 months, or sooner if roaches return.



- Defends your home against roaches
Kills roaches at the source
Mata cucarachas en la fuente
Keeps killing for up to 6 months
Actúa sin parar por hasta 6 meses

COMBAT SOURCE KILL MAX R1 SMALL ROACH

COMBAT SOURCE KILL MAX R1 SMALL ROACH logo and barcode area

COMBAT SOURCE KILL MAX R1 SMALL ROACH

Main product box with 'SOURCE KILL MAX R1 SMALL ROACH' and 'KILLS IN HOURS' text, including a diagram of a roach eating bait

DO NOT ALLOW CHILDREN OR PETS TO PLAY WITH THE BAIT STATIONS. CAUTION: SEE PRECAUTIONARY STATEMENTS ON SIDE PANEL.

ACTIVE INGREDIENT: Fipronil 0.03% OTHER INGREDIENTS: 99.97% TOTAL: 100.00%

TOTAL NET WT 0.42 OZ (12g)

KILLS IN HOURS MATA EN HORAS

12 CHILD-RESISTANT BAIT STATIONS ESTACIONES DE CEBO RESISTENTES AL CONTACTO DE NIÑOS

PRECAUTIONARY STATEMENTS: HAZARDS TO HUMANS AND DOMESTIC ANIMALS. CAUTION: Wash thoroughly with soap and water after handling and before eating, drinking, chewing gum, using tobacco, or using the toilet. STORAGE AND DISPOSAL: Do not contaminate water, food or feed by storage or disposal.

Cropped Label

COMBAT®

KILLS ROACHES AT THE SOURCE MATA CUCARACHAS EN LA FUENTE

SOURCE KILL MAX^{R1}

SMALL ROACH CUCARACHAS PEQUEÑAS

DO NOT ALLOW CHILDREN OR PETS TO PLAY WITH THE BAIT STATIONS.

CAUTION: SEE PRECAUTIONARY STATEMENTS ON SIDE PANEL.

ACTIVE INGREDIENT: Fipronil	0.03%
OTHER INGREDIENTS:	99.97%
TOTAL:	100.00%

¹CAS No. 120088-37-3

NO PERMITA QUE NIÑOS NI MASCOTAS JUEGUEN CON LAS ESTACIONES DE CEBO.

PRECAUCIÓN: LEER LAS PRECAUCIONES AL LADO DE LA CAJA.

TOTAL NET WT 0.42 OZ (12g)



KILLS IN HOURS MATA EN HORAS

12 CHILD-RESISTANT BAIT STATIONS ESTACIONES DE CEBO RESISTENTES AL CONTACTO DE NIÑOS

PRECAUTIONARY STATEMENTS: HAZARDS TO HUMANS AND DOMESTIC ANIMALS. CAUTION: Wash thoroughly with soap and water after handling and before eating, drinking, chewing gum, using tobacco, or using the toilet. **STORAGE AND DISPOSAL:** Do not contaminate water, food or feed by storage or disposal. **STORAGE:** Store in cool, dry area out of reach of children. **DISPOSAL: If empty:** Nonrefillable container. Do not reuse or refill this container. Offer for recycling, if available. If recycling is not available, place in trash. **If partially filled:** Call your local solid waste agency for disposal instructions. Never place unused product down any indoor or outdoor drain. **COMBAT® INFORMATION HELPLINE:** 1-800-426-6228.

DECLARACIONES PREVENTIVAS: RIESGOS PARA SERES HUMANOS Y ANIMALES DOMÉSTICOS. PRECAUCIÓN: Lávese bien con agua y jabón después de manipular el producto y antes de comer, beber, mascar chicle, usar tabaco o ir al baño. **ALMACENAMIENTO Y ELIMINACIÓN:** No contamine agua, comida ni forrajes durante el almacenamiento o disposición final. **ALMACENAMIENTO:** Guardar en un lugar fresco y seco, fuera del alcance de los niños. **ELIMINACIÓN: Envase vacío:** No recargable. No se puede volver a usar o llenar. Ofrézcalo para reciclar, si el servicio esta disponible. Si no hay reciclado disponible, colóquelo en la basura. **Envase semi-vacío:** Llame a su servicio de basura más cercano para obtener instrucciones de eliminación. Nunca tire el producto restante por un drenaje interno o externo. **LÍNEA DE AYUDA COMBAT®:** 1-800-426-6228.

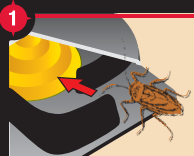
COMBAT®

Cropped Label

SOURCE KILL MAX^{R1}



SMALL ROACH



- Defends your home against roaches
- Defiende su hogar contra cucarachas
- Kills roaches at the source
- Mata cucarachas en la fuente
- Keeps killing for up to 6 months
- Actúa sin parar por hasta 6 meses

HOW COMBAT® SOURCE KILL MAX^{R1} WORKS: COMO FUNCIONA:

- 1 **Roaches enter the bait station and eat the bait.** Las cucarachas entran en la estación de cebo y comen el cebo.
- 2 **Roaches take the bait back to the nest.** Las cucarachas transportan el cebo a su nido.
- 3 **Roaches share the bait, killing other roaches and destroying the nest.** Las cucarachas comparten el cebo, matando a otras cucarachas y destruyendo el nido.

GUARANTEED TO WORK OR YOUR MONEY BACK! Call the COMBAT® HELPLINE at 1-800-426-6228 for information.

EFFECTO GARANTIZADO O LE DEVOLVEREMOS SU DINERO! Para información Llamar a la línea de Ayuda Combat® 1-800-426-6228.

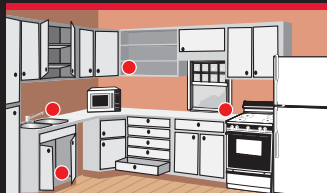
DISTRIBUTED BY & ©2013 COMBAT INSECT CONTROL SYSTEMS
SCOTTSDALE, AZ 85255
MADE IN KOREA
EPA Reg. No. 64240-33 EPA Est. No. 85632-KOR-001

The distinctive design and elements of this package are proprietary and owned by The Dial Corporation, A Henkel Company.

CO-2-51910-10/1767065



PLEASE RECYCLE EMPTY CARTON
POR FAVOR RECICLE EL CARTON VACIO



DIRECTIONS FOR USE: MODO DE EMPLEO:

IT IS A VIOLATION OF FEDERAL LAW TO USE THIS PRODUCT IN A MANNER INCONSISTENT WITH ITS LABELING. SE CONSIDERA UNA VIOLACIÓN A LA LEY FEDERAL USAR ESTE PRODUCTO CON OTROS FINES QUE LOS INDICADOS EN LA ETIQUETA.

1. **Use all 12 baits.** Break baits apart from plastic frame. Do not remove or puncture labels on bait stations. **Usar todos los 12 cebos.** Romper los cebos del marco de plástico. No quitar o perforar las etiquetas de los cebos.
2. **Place baits wherever you see or have seen roaches.** Then place additional baits about 1½ feet away. Some of the most likely roach hiding places are shown in the diagrams above. Do not use in beehives. **Colocar los cebos donde vea o haya visto cucarachas.** Colocar los cebos adicionales a 1-1/2 pie de distancia. En el dibujo arriba, se muestran algunos de los lugares mas frecuentes en donde suelen esconderse las cucarachas. No usar en colmenas.
3. **Place baits properly so they are touching walls or corners.** Do not use sprays or foggers around bait stations. **Colocar los cebos de manera tal que se encuentren en contacto con paredes y esquinas.** No usar aerosoles o fumigadores en el área donde se han colocado los cebos.
4. **Replace all 12 baits every 6 months, or sooner if roaches return.** **Reponer todos los 12 cebos cada 6 meses o antes si las cucarachas regresan.**

COMBAT[®]

SOURCE
KILL MAX^{R1}

CO-5-51910-04/1767048

THIS SIDE DOWN OR AGAINST SURFACE.

Note: Do not remove or puncture this label.

ESTE LADO HACIA ABAJO O CONTRA LA SUPERFICIE.

Atención: No quitar o perforar esta etiqueta.

ACTIVE INGREDIENT: Fipronil† 0.03%
OTHER INGREDIENTS: 99.97%
TOTAL: 100.00%

DO NOT ALLOW CHILDREN OR PETS TO PLAY WITH THE BAIT †CAS NO. 120068-37-3

STATIONS. NO PERMITA QUE NIÑOS NI MASCOTAS JUEGUEN CON LAS ESTACIONES DE CEBO
CAUTION/PRECAUCION Wash thoroughly with soap and water after handling bait stations.

DISPOSAL: If empty: Non-refillable container. Do not reuse or refill this container. Offer for recycling, if available. If recycling is not available, place in trash. **If partially filled:** Call your local solid waste agency for disposal instructions. Never place unused product down any indoor or outdoor drain.

Questions or Comments? Call 1-800-426-6228/Para preguntas o comentarios? Llamar al 1-800-426-6228.

Distributed by & ©2013 Combat Insect Control Systems

Scottsdale, Arizona 85255 MADE IN KOREA NET WT 0.035 oz (1.0g)

EPA Reg. No. 64240-33

EPA Est. No. 85632-KOR-001

SEE OUTER CARTON FOR COMPLETE DIRECTIONS AND PRECAUTIONS.
LEER EL CARTÓN DE AFUERA PARA INSTRUCCIONES DE USO Y PRECAUCIONES.

Combat Source Kill Small Roach 12 ct Label
CO-5-51910-04