

## How To... Remove and Replace the Wax Bag

Tools required: Phillips screwdriver, Side Cutters or Utility Knife

### Step 1

Turn the power **OFF** at the ON/OFF switch and then unplug the unit from the electrical outlet.

### Step 2

Remove the two SCREWS securing the WAX BAG ACCESS PANEL located on the user left side of the unit. Remove the WAX BAG ACCESS PANEL and set it aside.

**FOR A FIRST TIME INSTALLATION, SKIP TO STEP 7.**

### Step 3

Engage the HOSE CLAMP onto the WAX BAG HOSE.

### Step 4

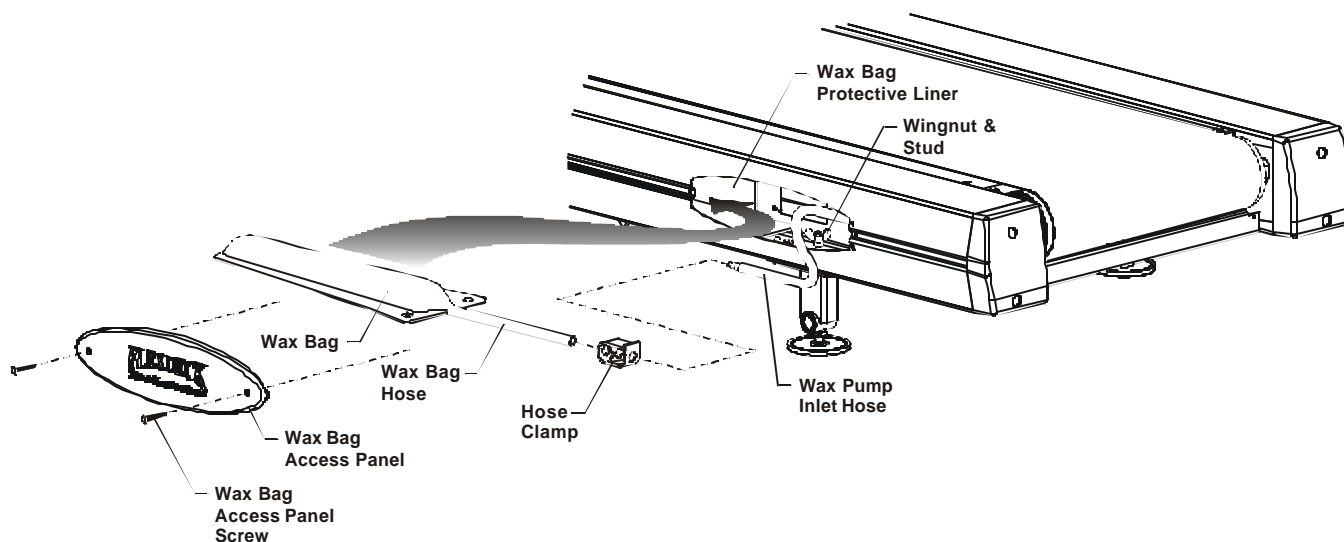
Slide the WAX BAG HOSE off the BARBED NOZZLE on the WAX PUMP INLET HOSE.

### Step 5

Remove the two WINGNUTS located just inside the access hole.

### Step 6

Lift the WAX BAG from the two WINGNUT STUDS. Slide the WAX BAG out of its PROTECTIVE LINER. Discard the used WAX BAG.



### Step 7

Verify that the WAX BAG PROTECTIVE LINER is open and ready to receive the WAX BAG. Remove the new WAX BAG from its packaging and carefully insert the WAX BAG into the access hole as shown with the WAX BAG HOSE facing the rear of the unit.

### Step 8

For first time installations, remove the two WINGNUTS located just inside the access hole.

### Step 9

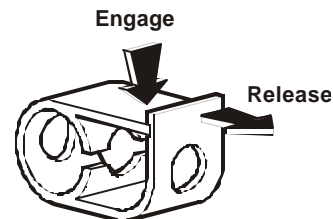
Align the mounting holes located in the WAX BAG FLANGE with the two WINGNUT STUDS. Secure the WAX BAG with the two WINGNUTS.

**CAUTION: BE CAREFUL NOT TO RIP OR OTHERWISE DAMAGE THE WAX BAG ON THE WINGNUT STUDS AND WINGNUTS WHEN INSERTING THE WAX BAG INTO THE FRAME.**

## How To... Remove and Replace the Wax Bag (Continued)

### Step 10

Slide the HOSE CLAMP over the end of the WAX BAG OUTLET HOSE. Position the HOSE CLAMP approximately three inches from the end of the WAX BAG HOSE and engage the HOSE CLAMP onto the WAX BAG HOSE.



### Step 11

Cut  $\frac{1}{2}$ " off the end of the WAX BAG HOSE and slide the WAX BAG HOSE onto the BARBED NOZZLE on the WAX PUMP INLET HOSE. Be sure to fully seat the WAX BAG HOSE. Release the HOSE CLAMP.

### Step 12

Replace the WAX BAG ACCESS PANEL and secure with the two WAX BAG ACCESS PANEL SCREWS.

**FIRST TIME INSTALLATION IS NOW COMPLETE.  
IF WAX BAG IS BEING REPLACED, CONTINUE THROUGH STEP 21.**

### Step 13

Reset the WAX FILL STATISTICS as follows.

### Step 14

Press and hold the PAUSE KEY. While holding the PAUSE KEY press the CLEAR KEY twice. Continue to hold the PAUSE KEY until the DISPLAY reads "SERVICE MENU."

### Step 15

Press any UP ARROW KEY until you see "MAINTENANCE" in the DISPLAY. Then press ENTER. The DISPLAY will begin to scroll automatically through available options.

### Step 16

When the DISPLAY reads "REFILL WAXER SYSTEM", press the ENTER KEY. The DISPLAY will read "REPAIR LOGGED."

### Step 17

Wax replacement is now complete.

### Step 18

To verify that the wax refill has been completed correctly, press the CLEAR KEY once to return to the "SERVICE MENU."

### Step 19

Using any of the UP ARROW KEYS, scroll until "INFORMATION" is displayed. Then press ENTER.

### Step 20

Press any of the UP ARROW KEYS until "WAX MOTOR INFO" appears in the DISPLAY. Press ENTER and verify that the DISPLAY reads "100/100 FULL."

### Step 21

Press the CLEAR KEY three times to exit diagnostic.

**WAX BAG REPLACEMENT IS NOW COMPLETE.**