

Guía del Usuario del COREOR para Entréguese de Contenedores Llenos



Autoridad Portuaria de
Bilbao

ePuertoBilbao



Autoridad Portuaria de Bilbao

Version : e-puertobilbao v1.0
Date : Abril 2010
Source : SMDG v2.0

CONTENTS

0. INTRODUCTION	3
1. GENERAL	3
2. STATUS INDICATORS AND USAGE INDICATORS	4
3. DOCUMENT MAINTENANCE	5
4. SEGMENT TABLE	6
5. MESSAGE STRUCTURE DIAGRAM	7
6. MESSAGE DESCRIPTION	10

0. INTRODUCTION

This User Manual has been developed by the SMDG User Group for Shipping Lines and Container Terminals, a "Global User Group" under the auspices of UN/CEFACT.

This User Manual is based upon the UN/EDIFACT D.00B directory and the ITIGG documents "International Reference Guideline for the implementation of transport EDI messages – COREOR Import Container Release message", version 1.4, dated March 1998 and "Principles and Rules for the implementation of transport EDI messages – Transport Equipment Movements – Maritime-related container messages", version 1.3.1, dated September 1996.

This User Manual provides guidance as to the recommended usage of codes, qualifiers, data elements, composites, segments and groups of segments in the D.00B COREOR message. The intention is to assist developers to ensure consistent use of the COREOR message throughout the worldwide trade and transport community.

1. GENERAL

Formal Definition

"Order to release containers, and giving permission for them to be picked up by or on behalf of a specified party. This message is part of a total set of container-related messages. These messages serve to facilitate the intermodal handling of containers by streamlining the information exchange. The business scenario for the container messages is clarified in a separate document, called "Guide to the scenario of EDIFACT container messages".

The COREOR message is used for the release of full containers, either for export or for release to an importer or agent.

In addition to the release of full containers, the COREOR message may optionally be used to release empty transport equipment prior to packing.

2. STATUS INDICATORS AND USAGE INDICATORS

Status Indicators

Are the sections/segments/data elements that are cross-outed in this guide can be sent. The message will not be rejected but the information will not be processed.

~~€ 4343 RESPONSE TYPE CODE € ‡ an-3~~
~~AB Message acknowledgement~~

Status Indicators ("M" and "C") form part of the UN/EDIFACT standard and indicate a minimum requirement to fulfil the needs of the message structure. They are not adequate for implementation purposes. The Status Indicators are :

<i>Value</i>	<i>Description</i>
M	Mandatory The entity marked as such must appear in all messages, and apply to these messages as well as to any associated implementation guidelines (and consequently is also a Usage Indicator).
C	Conditional The entity is used by agreement between trading partners.

Usage Indicators

Usage Indicators are implementation-related indicators that further detail the use of "Conditional" Status Indicators. Usage Indicators are applied at all levels of the guidelines and shown adjacent to data items such as segment groups, segments, composite data elements and simple data elements. They dictate the agreed usage of the data items or entities. The Usage Indicators are :

<i>Value</i>	<i>Description</i>
M	Mandatory Indicates the item is mandatory in the UN/EDIFACT message.
R	Required Indicates the item must be transmitted in this implementation.
D	Dependent Indicates that the use of the item is depending on a well-defined condition or set of conditions. These conditions must be clearly specified in the relevant implementation guideline.
O	Optional Indicates that this item is at the need or discretion of both trading partners.
X	Not Used Indicates that this item is not to be used in this implementation.

Where an item within a segment group, segment or composite data element is marked with Usage Indicators "M" or "R", but the segment group, segment or composite data element has been marked "O" or "D" (or for that matter "X"), the item is only to be transmitted when the segment group, segment or composite of which it is a part, is used.

3. DOCUMENT MAINTENANCE

- **Versión v1.0 (Abril 2010)**
 - o Primera versión
-

4. SEGMENT TABLE

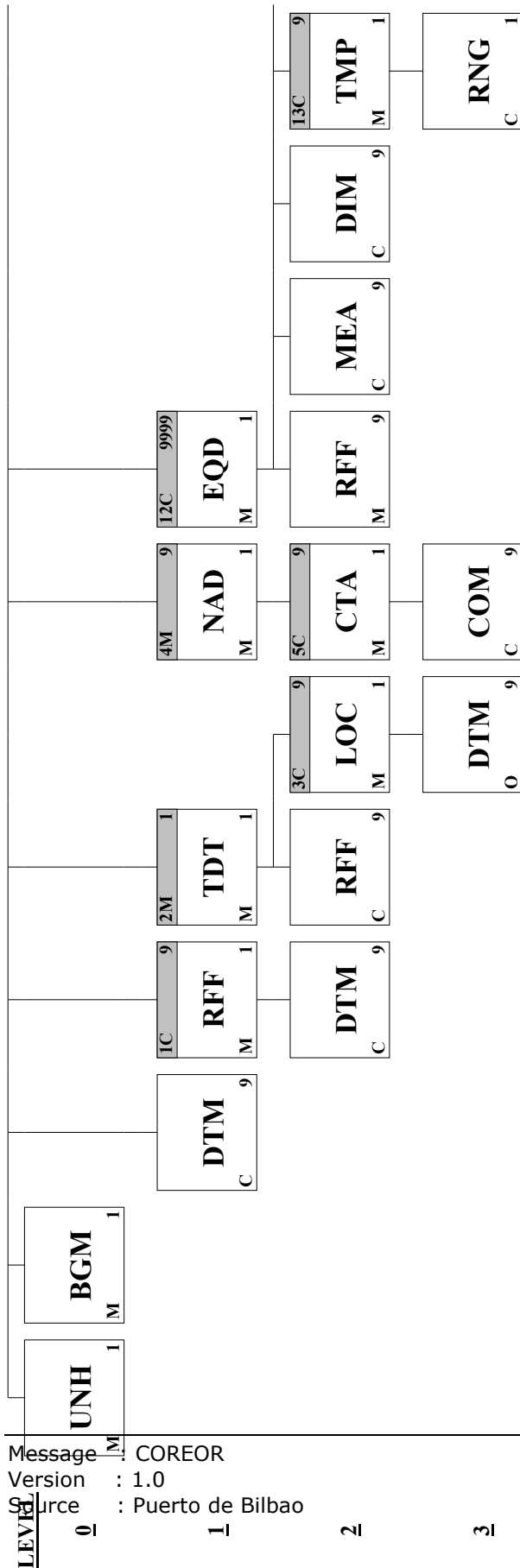
Introduction:

Order to release containers, and giving permission for them to be picked up by or on behalf of a specified party. This message is part of a total set of container-related messages. These messages serve to facilitate the intermodal handling of containers by streamlining the information exchange. The business scenario for the container messages is clarified in a separate document, called: 'Guide to the scenario of EDIFACT container messages'.

This is the Subset for Port of Bilbao Port Community System [e-puertobilbao](#) of SMDG standard.

	Pos. No.	Seg. ID	Name	Req. Des.	Max. Use	Group Repeat	Max. use by Port of Bilbao subset
M	0010	UNH	Message Header	M	1		1
M	0020	BGM	Beginning of Message	M	1		1
R	0030	DTM	Date/Time/Period	C	9		1
M	0050		Segment Group 1: RFF-DTM	M		9	
M	0060	RFF	Reference	M	1		3
O	0070	DTM	Date/Time/Period	C	9		2
M	0080		Segment Group 2: TDT-RFF-SG3	M		1	
M	0090	TDT	Details of Transport	M	1		1
O	0110	RFF	Reference	C	9		2
O	0120		Segment Group 3: LOC-DTM	C		9	
M	0130	LOC	Place/Location Identification	M	1		1
O	0140	DTM	Date/Time/Period	O	9		2
M	0150		Segment Group 4: NAD-SG5	M		9	
M	0160	NAD	Name and Address	M	1		5
O	0170		Segment Group 5: CTA-COM	C		9	
M	0180	CTA	Contact Information	M	1		1
O	0190	COM	Communication Contact	C	9		5
M	0450		Segment Group 12: EQD-RFF-MEA-DIM-SG13-SEL-FTX-SG14-SG17	M		9999	
M	0460	EQD	Equipment Details	M	1		1
O	0470	RFF	Reference	C	9		1
O	0490	MEA	Measurements	C	9		2
O	0500	DIM	Dimensions	C	9		5
O	0510		Segment Group 13: TMP	C		9	
M	0520	TMP	Temperature	M	1		1
O	0540	SEL	Seal Number	C	9		9
O	0550	FTX	Free Text	C	9		9
O	0590		Segment Group 14: TDT	M		9	
M	0600	TDT	Details of Transport	M	1		1
O	0700		Segment Group 17: DGS	C		9	
M	0710	DGS	Dangerous Goods	M	1		1
O	0770	CNT	Control Total	C	1		1
M	0780	UNT	Message Trailer	M	1		1

5. MESSAGE STRUCTURE DIAGRAM



Message : COREOR

8

Abril 2010

Version : 1.0

Source : Puerto de Bilbao

LEVEL

0

1

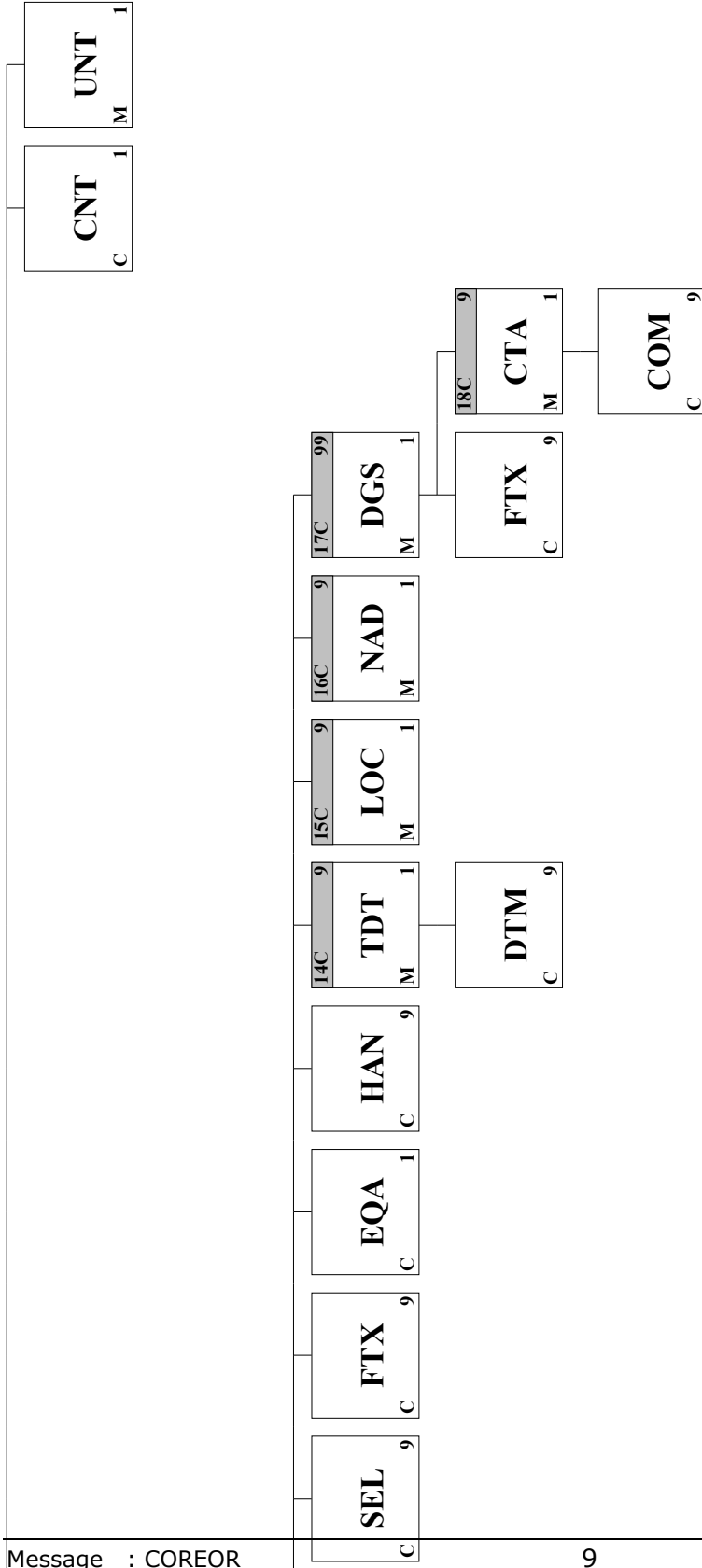
2

3

4

5

6



Message : COREOR

Version : 1.0

Source : Puerto de Bilbao

LEVEL

0

1

2

3

4

5

6

9

Abril 2010

6. MESSAGE DESCRIPTION

UNB Interchange Header

Position: 0000
Group:
Level: 0
Usage: Mandatory
Max Use: 1
Purpose: The UNB segment is used to head, identify and specify an interchange
Comments:
Notes: *Sample segment :*
 UNB+UNOA:2+Q4867002J+A95095691+080108:1531+AAAA096944'

Data Element Summary

<u>Attributes</u>	<u>Data Element</u>	<u>Component Element</u>	<u>Name</u>			
M	S001	0001	SYNTAX IDENTIFIER Syntax identifier	M	1	an..4
		0002	Syntax version number 2	M	1	n..1
M	S002	0004	INTERCHANGE SENDER Sender identification: name code of the message sender. CIF del emisor	M	1	an...35
M	S003	0010	INTERCHANGE RECIPIENT Recipient identification: name code of the message recipient. CIF del destinatario	M		an..35
M	S004	0017	DATE AND TIME OF PREPARATION Date of preparation: (format YYYYMMDD)	M		n..6
M		0019	Time of preparation: (format HHMM)	M		n..4
M		0020	INTERCHANGE CONTROL REFERENCE: a reference allocated by the sender, uniquely identifying the interchange. This reference must also be transmitted in the UNZ segment.	M		an..14

UNH Message Header

Position: 0010
Group:
Level: 0
Usage: Mandatory
Max Use: 1
Purpose: A service segment starting and uniquely identifying a message. The message type code for the Container release order message is COREOR.
 Note: Container release order messages conforming to this document must contain the following data in segment UNH, composite S009:
 Data element 0065 COREOR 0052 D 0054 00B
 0051 UN

Comments:

Notes: *Sample segment :*
 UNH+AAAA096944+COREOR:D:00B:UN:SMDG20'

Data Element Summary

Data Component		Element	Element Name		
<u>Attributes</u>					
M	0062	MESSAGE REFERENCE NUMBER		M	1 an..14
		<i>Unique message reference assigned by the sender.</i>			
		<i>This reference must also be transmitted in the UNT segment.</i>			
		En el envío se generará un identificador con el formato EPBAAnnnnnn, donde AA representan los dos últimos dígitos del año			
M	S009	MESSAGE IDENTIFIER		M	1
M	0065	Message type identifier		M	an..6
		COREOR	Container release order message		
M	0052	Message type version number		M	an..3
		D	Draft version/UN/EDIFACT Directory		
M	0054	Message type release number		M	an..3
		00B	Release 2000 - B		
M	0051	Controlling agency		M	an..2
		UN	UN/CEFACT		
R	0057	Association assigned code		C	an..6
		SMDG20	SMDG Version 2.0		

BGM Beginning of Message

Position: 0020

Group:

Level: 0

Usage: Mandatory

Max Use: 1

Purpose: A segment to indicate the beginning of a message and to transmit identifying number and the further specification of the message type (in data element 1001: Document name code), such as Container release order.

Comments:

Notes: *Sample segment :*
BGM+129+800255846+9'

Data Element Summary

		Data Component		
		Element	Element Name	
Attributes				
R	C002	1001	DOCUMENT/MESSAGE NAME	C 1
R		1001	Document name code	C an..3
		129	Transport cargo release order	
✖		1131	Code list identification code	€ an..17
✖		3055	Code list responsible agency code	€ an..3
✖		1000	Document name	€ an..35
R	C106	1004	DOCUMENT/MESSAGE IDENTIFICATION	C 1
R		1004	Document identifier	C an..35
			<i>Sender's unique reference number</i>	
			Se enviará el ED UNH.0062	
✖		1056	Version identifier	€ an..9
✖		1060	Revision identifier	€ an..6
R	1225		MESSAGE FUNCTION CODE	C 1 an..3
			<i>If code 1 or 5 is used, reference number of the message which is being cancelled/replaced must appear in the header level RFF using the code ACW in e1153.</i>	
		1	Cancellation	
		5	Replace	
		9	Original	

DTM Date/Time/Period

Position: 0030

Group:

Level: 1

Usage: Conditional (Required)

Max Use: 9

Purpose: A segment to indicate a date and/or time applying to the whole message, such as date and time of document or message issue.

Comments:

Notes: *Sample segment :*
DTM+137:200211211523:203'

Data Element Summary

Data Component		Element		Element Name	
<u>Attributes</u>					
M	C507	DATE/TIME/PERIOD	M	1	
M	2005	Date or time or period function code qualifier	M	an..3	
	137	Document/message date/time			
R	2380	Date or time or period value <i>Date/time that the message was prepared.</i>	C	an..35	
R	2379	Date or time or period format code	C	an..3	
	203	CCYYMMDDHHMM			

RFF Reference

Position: 0060 (Trigger Segment)
Group: Segment Group 1 (Reference) Mandatory
Level: 1
Usage: Mandatory
Max Use: 1
Purpose: A segment to express a reference which applies to the entire message, such as: - release order reference number - container announcement reference number

Comments:

Notes: *Sample segment :*
 RFF+ZZZ:1'
 RFF+ACW:COREOR0001233'
 RFF+CN:0123456789'

Data Element Summary

Data Component		Element	Element Name		
Attributes					
M	C506		REFERENCE	M	1
M		1153	Reference code qualifier	M	an..3
			ACW Reference number to previous message		
			CN Carrier's reference number		
			ZZZ Consignee Reference number		
			ZZZ Mutually defined		
M		1154	Reference identifier	M	an..70
			Reference number		
			Si ACW: BGM.1004 del COREOR original (que se quiere modificar)		
			Si ZZZ: "1" - Dummie value		

La primera función de este segmento será obligatoria con el calificador ZZZ y un 1 en el ED 1154.

La segunda función de este segmento será necesaria en el caso de los reemplazos y las cancelaciones con el calificador ACW y el número de referencia del primer envío respecto al que se quiere realizar la modificación en el ED 1154.

La tercera función de este segmento con el calificador CN es opcional, o se indica en este segmento, con lo cual sería la misma referencia de consignatario o booking para todos los EQDs o se indica a nivel de EQD, con lo que se podrían indicar distintas referencias de consignatario para los distintos EQDs.

DTM Date/Time/Period

Position: 0070
Group: Segment Group 1 (Reference) Conditional (Optional)
Level: 2
Usage: Conditional (Optional)
Max Use: 9
Purpose: A segment to indicate date and/or time related to the reference.

Comments:

Notes: *Sample segment :*
DTM+36:20100530:102'
DTM+203:201005311200:203'

Data Element Summary

Data Component		Element	Element Name		
<u>Attributes</u>					
M	C507		DATE/TIME/PERIOD	M	1
M		2005	Date or time or period function code	M	an..3
			qualifier		
		36	Fecha de validez del Entréguese		
		203	Fecha-Hora Solicitada Entrega en Destino		
R		2380	Date or time or period value	C	an..35
			<i>Date or date/time</i>		
R		2379	Date or time or period format code	C	an..3
		102	CCYMMDD if ED C507.2005=36		
		203	CCYMMDDHHMM if ED C507.2005=203		

TDT Details of Transport

Position: 0090 (Trigger Segment)
Group: Segment Group 2 (Details of Transport) Mandatory
Level: 1
Usage: Mandatory
Max Use: 1
Purpose: A segment to indicate the main carriage stage of the transport, such as carrier/liner service; also inland transport details can be specified.

Comments:

Notes: *Sample segment :*
TDT+20++1++A1234567:172:ZZZ+++7104673:146:11:MSC
CLAUDIA:PA'

Data Element Summary

		Data Component	Element	Element Name			
Attributes							
M	8051			TRANSPORT STAGE CODE QUALIFIER	M	1	an..3
			20	Main-carriage transport			
Ø	8028			MEANS OF TRANSPORT JOURNEY IDENTIFIER	Ø	1	an..17
				Vessel operator's voyage number			
R	C220			MODE OF TRANSPORT	C	1	
R		8067		Transport mode name code	C		an..3
			1	Maritime transport (ocean)			
			2	Rail			
✖		8066		Transport mode name	Ø		an..17
Ø	Ø228			TRANSPORT MEANS	Ø	1	
Ø		8179		Transport means description code	Ø		an..8
				Means of transport code (UN/ECE Recommendation 28)			
Ø		8178		Transport means description	Ø		an..17
				Type of means of transport (free text)			
R	C040			CARRIER	C	1	
R		3127		Carrier identifier	C		an..17
				CIF Consignatario Buque(Vessel operator's VAT code)ó			
				CIF Operador Ferroviario (Train operator's VAT code)			
O		1131		Code list identification code	C		an..17
			172	Carriers			
O		3055		Code list responsible agency code	C		an..3
				Temporary code			
			ZZZ	Mutually defined			
Ø		3128		Carrier name	Ø		an..35
				Vessel operator's name (free text)			
✖	8101			TRANSIT DIRECTION INDICATOR CODE	Ø	1	an..3
✖	Ø401			EXCESS TRANSPORTATION INFORMATION	Ø	1	
✖		8457		Excess transportation reason code	M		an..3
✖		8459		Excess transportation responsibility code	M		an..3
✖		7130		Customer shipment authorisation identifier	Ø		an..17
O	C222			TRANSPORT IDENTIFICATION	C	1	
O		8213		Transport means identification name identifier	C		an..9
				(if 8067 = 1) Lloyd's (IMO) number			
				(if 8067 = 2) Train ID/Number			

O	1131	Code list identification code	C	an..17
	146	Means of transport identification (if 8067 = 1)		
O	3055	Code list responsible agency code	C	an..3
	11	Lloyd's register of shipping (if 8067 = 1)		
O	8212	Transport means identification name	C	an..35
		Vessel name (free text) (if 8067 = 1)		
O	8453	Transport means nationality code	C	an..3
		Flag of means of transport (ISO country code) (if 8067 = 1)		

RFF Reference

Position: 0110
Group: Segment Group 2 (Details of Transport) Mandatory
Level: 2
Usage: Conditional (Optional)
Max Use: 9
Purpose: A segment to provide a reference for the liner service, such as: - conference - marketing organization - syndicate - vessel sharing agreement

Comments:

Notes: *Sample segment :*
RFF+ABT:48119501234'
RFF+VON:2010DGXS003'

Data Element Summary

		Data Component			
		Element	Element Name		
<u>Attributes</u>					
M	C506	REFERENCE		M	1
M		1153	Reference code qualifier	M	an..3
			VON Voyage number		
			ABT Summary Declaration number		
R		1154	Reference identifier	C	an..70
			Alternative (non vessel operator's) voyage number (if C506.e1153 = 'VON')		
			Summary Declaration number if C506.1153=ABT		

LOC Place/Location Identification

Position: 0130 (Trigger Segment)
Group: Segment Group 3 (Place/Location Identification) Conditional
 (Optional)
Level: 2
Usage: Mandatory
Max Use: 1
Purpose: A segment to indicate a place/port corresponding to the transport stage, such as final place/port of discharge or port of loading.
Comments:
Notes: *Sample segment :*
 LOC+11+BEANR:139:6+A95095691:72:ZZZ'

Data Element Summary

Data Component		Element	Element Name		
<u>Attributes</u>					
M	3227		LOCATION FUNCTION CODE QUALIFIER	M	1 an..3
		11	Place/port of discharge		
R	C517		LOCATION IDENTIFICATION	C	1
O		3225	Location name code	C	an..25
			UNLOCODE		
O		1131	Code list identification code	C	an..17
		139	Port		
O		3055	Code list responsible agency code	C	an..3
		6	UN/ECE (United Nations - Economic Commission for Europe)		
€		3224	Location name	€	an..256
			Port name (free text)		
O	C519		RELATED LOCATION ONE IDENTIFICATION	C	1
O		3223	First related location name code	C	an..25
			CIF Terminal Contenedores		
O		1131	Code list identification code	C	an..17
		72	Container terminal		
O		3055	Code list responsible agency code	C	an..3
			Temporary code		
		ZZZ	Mutually defined		

Este segmento se incluirá para indicar el Puerto de Descarga (LOC+11) en un Entréguese de Contenedores Vacíos.

DTM Date/Time/Period

Position: 0140
Group: Segment Group 3 (Place/Location Identification) Conditional
 (Optional)
Level: 3
Usage: Optional (Optional)
Max Use: 9
Purpose: A segment to specify date(s) and time(s) related to a location.

Comments:

Notes: *Sample segment :*
 DTM+132:201005290800:203'
 DTM+133:201005301800:203'

Data Element Summary

		Data Component			
		Element	Element Name		
<u>Attributes</u>					
M	C507		DATE/TIME/PERIOD	M	1
M		2005	Date or time or period function code	M	an..3
			qualifier		
		132	Arrival date/time, estimated - ETA		
		133	Departure date/time, estimated - ETD		
R		2380	Date or time or period value	C	an..35
			Arrival/departure date/time		
R		2379	Date or time or period format code	C	an..3
		203	CCYYMMDDHHMM		

NAD Name and Address

Position: 0160 (Trigger Segment)
Group: Segment Group 4 (Name and Address) Mandatory
Level: 1
Usage: Mandatory
Max Use: 1
Purpose: A segment to identify the party's name and address, and function, such as: - message recipient - message sender - carrier or agent - ordering customer - ordering customer agent

Comments:

Notes: *Sample segment :*
 NAD+MS+A1234567:172:ZZZ'

Data Element Summary

		Data Component			
		Element	Element Name		
<u>Attributes</u>					
M	3035	PARTY FUNCTION CODE QUALIFIER		M	1 an..3
		CA	Carrier (Principal)		
		HR	Shipping line service (Línea)		
		MS	Document/message issuer/sender CIF Consignatario emisor (Agente)		
		OY	Ordering customer Pick-up subcontractor CIF Transitario responsable del transporte cedido (Opcional)		
		TR	CIF DEPOT ó Terminal de entrega del contenedor vacío (Opcional)		
O	C082	PARTY IDENTIFICATION DETAILS		C	1
M		3039 Party identifier		M	an..35
			Company code - VAT number - CIF		
O		1131 Code list identification code		C	an..17
			172 Carriers		
O		3055 Code list responsible agency code		C	an..3
			Temporary code		
			ZZZ Mutually defined		

La primera función del NAD, codificado con el CIF del Consignatario, llevará el calificador MS (Document/message issuer/sender) indicando el emisor del mensaje y es un segmento obligatorio.

La función con el calificador TR es para el Transitario, Terminal o Depot con el objeto de indicar dónde se entregará el contenedor una vez vaciado, es opcional.

CTA Contact Information

Position: 0180 (Trigger Segment)
Group: Segment Group 5 (Contact Information) Conditional (Optional)
Level: 2
Usage: Mandatory
Max Use: 1
Purpose: A segment to identify a person or department for contact purposes, such as: - information contact

Comments:

Notes: *Sample segment :*
 CTA+IC+:STAN MATTHEWS'

Data Element Summary

Data Component			
Element	Element Name		
Attributes			
R	3139	CONTACT FUNCTION CODE IC Information contact	C 1 an..3
R	C056	DEPARTMENT OR EMPLOYEE DETAILS	C 1
X	3413	Department or employee name code	C an..17
R	3412	Department or employee name <i>Contact name</i>	C an..35

COM Communication Contact

Position: 0190
Group: Segment Group 5 (Contact Information) Conditional (Optional)
Level: 3
Usage: Conditional (Optional)
Max Use: 9
Purpose: A segment to identify a communication number of a person or department to whom communication should be directed.

Comments:

Notes: *Sample segment :*
 COM+494030012967:TE'

Data Element Summary

Data Component		Element		Element Name	
Attributes					
R	C076		COMMUNICATION CONTACT	C	3
R		3148	Communication address identifier Contact number	C	an..512
R		3155	Communication address code qualifier	C	an..3
			EM Electronic mail		
			FX Telefax		
			TE Telephone		
			TL Telex		
			XF X.400 address		

EQD Equipment Details

Position: 0460 (Trigger Segment)
Group: Segment Group 12 (Equipment Details) Conditional (Required)
Level: 1
Usage: Mandatory
Max Use: 1
Purpose: A segment to specify a container, container size and type, and full/empty indication.

Comments:

Notes: *Sample segment :*
EQD+CN+XXXU9876543+4532:102:5+++5'

Data Element Summary

Data Component		Element	Element Name		
<u>Attributes</u>					
M	8053		EQUIPMENT TYPE CODE QUALIFIER	M	1 an..3
			BB Break bulk – Mercancía General		
			CN Container con matrícula estándar		
			SW Swap body (equipamiento) con matrícula libre de formato		
O	C237		EQUIPMENT IDENTIFICATION	C	1
R		8260	Equipment identifier	C	an..17
			Marks (letters/numbers) identifying equipment. To be transmitted as they appear on the equipment.		
			Si 8053 = CN -> Alphanumeric, 4 characters + 7 digits or 1 character + 1 or 2 digits for tanks		
			Si 8053 = SW -> free format number		
			Sí 8053 = BB -> empty data element		
*		1131	Code list identification code	€	an..17
*		3055	Code list responsible agency code	€	an..3
*		3207	Country name code	€	an..3
D	C224		EQUIPMENT SIZE AND TYPE	C	1
O		8155	Equipment size and type description code	C	an..10
			Equipment size/type code as per ISO6346 (.1 or.2, .2 preferred)		
			Se validará en función de las dos últimas cifras en codificación ISO6346 e ISO6346:1995 si son cisternas.		
			Sí 8053 = BB -> En Blanco		
O		1131	Code list identification code	C	an..17
			102 Size and type		
O		3055	Code list responsible agency code	C	an..3
			5 ISO (International Organization for Standardization)		
€		8154	Equipment size and type description	€	an..35
€	8077		EQUIPMENT SUPPLIER CODE	€	1 an..3
€	8249		EQUIPMENT STATUS CODE	€	1 an..3
R	8169		FULL OR EMPTY INDICATOR CODE	C	1 an..3
			5 Full		

RFF Reference

Position: 0470
Group: Segment Group 12 (Equipment Details) Mandatory
Level: 2
Usage: Optional
Max Use: 9
Purpose: A segment to specify a reference number relevant to the container, such as: - release number - reference at the place of collection

Comments:

Notes: *Sample segment :*
RFF+CN:GBBIO123555'

Data Element Summary

	Data Element	Component Element	Name	Attributes		
M	C506		REFERENCE		M	1
M		1153	Reference code qualifier	Carrier's reference number - Número de referencia del Consignatario	M	an..3
R		1154	Reference identifier	Reference number	C	an..70

Para la función con el calificador "CN" es necesario tener en cuenta que sí se indica el Nº de Referencia del Consignatario (Entréguese de Llenos) a nivel de cabecera no se podrá indicar a nivel de EQD, sí no se indica a nivel de cabecera será obligatorio que se indique a nivel de EQD para todos los EQDs del mensaje, pudiendo ser distinto o no para todos los EQDs.

MEA Measurements

Position: 0490
Group: Segment Group 12 (Equipment Details) Conditional (Required)
Level: 2
Usage: Conditional (Optional)
Max Use: 9
Purpose: A segment to specify measurement, other than dimensions, associated with the container, such as: - tare weight - gross weight

Comments:

Notes: *Sample segment :*
 MEA+AAE+G+KGM:10474'
 MEA+AAE+CT+E13:64'

Data Element Summary

		Data Component		
		Element	Element Name	
Attributes				
M	6311	MEASUREMENT PURPOSE CODE QUALIFIER		M 1 an..3
		AAE Measurement		
R	C502	MEASUREMENT DETAILS		C 1
R	6313	Measured attribute code		C an..3
		G Gross weight / Peso bruto (mercancía + tara)		
		CT Nº de bultos		
*	6321	Measurement significance code		€ an..3
*	6155	Non-discrete measurement name code		€ an..17
*	6154	Non-discrete measurement name		€ an..70
M	C174	VALUE/RANGE		M 1
M	6411	Measurement unit code		M an..3
		KGM Kilogramos, si 6313=G		
		E13 Nº de bultos, si 6313=CT		
R	6314	Measurement value		C an..18
		Peso bruto, if 6313=G		
		Nº de bultos, if 6313=CT		

Si se trata de mercancía general se enviarán dos ocurrencias de este segmento, una para calificador G y otra para calificador CT.

DIM Dimensions

Position: 0500
Group: Segment Group 12 (Equipment Details) Conditional (Required)
Level: 2
Usage: Conditional (Optional)
Max Use: 9
Purpose: A segment to specify off-standard dimensions applicable to the container.

Comments:

Notes: *Sample segment :*
 DIM+8+CMT::12'

Data Element Summary

Data Component		Element	Element Name		
<u>Attributes</u>					
M	6145	DIMENSION TYPE CODE QUALIFIER		M	1 an..3
		1	Gross dimensions		
			To be used for break bulk only		
		5	Off-standard dimension front		
		6	Off-standard dimension back		
		7	Off-standard dimension right		
		8	Off-standard dimension left		
		13	Off-standard dimensions height		
M	C211	DIMENSIONS		M	1
M	6411	Measurement unit code		M	an..3
		CMT	Centimetre		
D	6168	Length dimension value		C	n..15
			Overall length if e6145 = 1		
			Overlength if e6145 = 5 or 6		
D	6140	Width dimension value		C	n..15
			Overall width if e6145 = 1		
			Overwidth if e6145 = 7 or 8		
D	6008	Height dimension value		C	n..15
			Overall height if e6145 = 1		
			Overheight if e6145 = 13		

Si se trata de mercancía en contenedor, únicamente se utilizará este segmento para indicar extradimensiones (si las hubiera).

Si se trata de mercancía general, se enviará una ocurrencia de este segmento con el calificador 1 y valor en los 3 elementos de datos si se trata de mercancía general.

TMP Temperature

Position: 0520 (Trigger Segment)
Group: Segment Group 13 (Temperature) Conditional (Optional)
Level: 2
Usage: Mandatory
Max Use: 1
Purpose: A segment to specify the transport temperature setting of a container.

Comments:

Notes: *Sample segment :*
 TMP+2+-18:CEL'
Only to be used when a set temperature is to be specified.

Data Element Summary

Data Component		Element Name		Attributes	
Element	Element Name	Element Name	Element Name	Attributes	Attributes
M	6245	TEMPERATURE TYPE CODE QUALIFIER	TEMPERATURE TYPE CODE QUALIFIER	M	1 an..3
		2	Transport temperature		
R	C239	TEMPERATURE SETTING	TEMPERATURE SETTING	C	1
R	6246	Temperature value	Temperature value	C	n..15
		Temperature Setting	Temperature Setting		
R	6411	Measurement unit code	Measurement unit code	C	an..3
		CEL	Celsius		

SEL Seal Number

Position: 0540
Group: Segment Group 12 (Equipment Details) Conditional (Required)
Level: 2
Usage: Conditional (Optional)
Max Use: 9
Purpose: A segment to identify seal and seal issuer associated with the container, such as shipper, consolidator, carrier (sea) and Customs.

Comments:

Notes: *Sample segment :*
 SEL+87579855'

Data Element Summary

Data Component		Element		Element Name	
Attributes					
R	9308	SEAL IDENTIFIER		C	1 an..35
		Seal number			

FTX Free Text

Position: 0550
Group: Segment Group 12 (Equipment Details) Conditional (Required)
Level: 2
Usage: Conditional (Optional)
Max Use: 9
Purpose: A segment to specify processable supplementary information associated with the container, such as: - loading instructions (seagoing vessel) - special instructions (related to inland transport)

Comments:

Notes: *Sample segment :*
 FTX+AAA+++CHOCOLATES'

Data Element Summary

Data Component		Element	Element Name			
Attributes						
M	4451	TEXT SUBJECT CODE QUALIFIER		M	1	an..3
		AAA	Goods description			
		AAI	General information (Observaciones)			
*	4453	FREE TEXT FUNCTION CODE		€	1	an..3
€	C107	TEXT REFERENCE		€	1	
M	4441	Free text value code		M		an..17
€	1131	Code list identification code		€		an..17
€	3055	Code list responsible agency code		€		an..3
D	C108	TEXT LITERAL		C	1	
M	4440	Free text value		M		an..512
		General information (if e4451 = AAI) :				
		Free text				
		Description of goods (if e4451 = AAA) :				
		Free text				

Si se trata de mercancía general es obligatoria una ocurrencia de este segmento con el calificador AAA.

TDT Details of Transport

Position: 0600 (Trigger Segment)
Group: Segment Group 14 (Details of Transport) Mandatory (Optional)
Level: 2
Usage: Mandatory
Max Use: 1
Purpose: A segment to specify details of the inland transport associated with the collection of the container.

Comments:

Notes: *Syntax:*
 TDT+30++3++A1234567:172:ZZZ'

Data Element Summary

		Data Component		
		Element	Element Name	
Attributes				
M	8051	TRANSPORT STAGE CODE QUALIFIER	M	1 an..3
		30 On-carriage transport		
⊖	8028	MEANS OF TRANSPORT JOURNEY IDENTIFIER	⊖	1 an..17
		Carrier's voyage number		
R	C220	MODE OF TRANSPORT	C	1
R	8067	Transport mode name code	C	an..3
		2 Rail		
		3 Road		
*	8066	Transport mode name	⊖	an..17
⊖	C228	TRANSPORT MEANS	⊖	1
⊖	8179	Transport means description code	⊖	an..8
		Means of transport code (UN/ECE recommendation 28)		
⊖	8178	Transport means description	⊖	an..17
O	C040	CARRIER	C	1
O	3127	Carrier identifier	C	an..17
		Carrier code		
		CIF del Transportista Rodado ó del Operador Ferroviario		
O	1131	Code list identification code	C	an..17
		172 Carriers		
O	3055	Code list responsible agency code	C	an..3
		Temporary code		
		ZZZ Mutually defined		

DGS Dangerous Goods

Position: 0710 (Trigger Segment)
Group: Segment Group 17 (Dangerous Goods) Conditional (Optional)
Level: 2
Usage: Mandatory
Max Use: 1
Purpose: A segment to indicate the dangerous goods regulations which apply, the class of dangerous goods, additional dangerous goods codes, the United Nations Dangerous Goods (UNDG) number and the shipment flash point.

Comments:

Notes: *Sample segment :*
 DGS+IMD+3+2058'

Data Element Summary

		Data Component			
		Element	Element Name		
Attributes					
R	8273		DANGEROUS GOODS REGULATIONS CODE	C	1 an..3
		IMD	IMO IMDG code		
R	C205		HAZARD CODE	C	1
M		8351	Hazard identification code	M	an..7
			IMDG Class Number		
⊖		8078	Additional hazard classification identifier	⊖	an..7
			IMDG Code page number (english version)		
⊖		8092	Hazard code version identifier	⊖	an..10
			IMDG code version number		
O	C234		UNDG INFORMATION	C	1
O		7124	United Nations Dangerous Goods (UNDG) identifier	C	n4
			UNDG number - Nº ONU		

CNT Control Total

Position: 0770

Group:

Level: 0

Usage: Conditional (Optional)

Max Use: 1

Purpose: A segment to specify the number of containers in the message, explicitly given by the sender.

Comments:

Notes: *Sample segment :*

CNT+1:1'

CNT+16:25'

Data Element Summary

		Data Component			
		Element	Element Name		
<u>Attributes</u>					
M	C270	CONTROL		M	1
M		6069	Control total type code qualifier	M	an..3
		1	Algebraic total of the quantity values in line items in a message		
		16	Total number of equipment		
M		6066	Control total value	M	n..18
			Dummy value of 1 (if e6069 = 1)		
			Number of EQD segments in the message (if e6069 = 16)		

UNT Message Trailer

Position: 0780
Group:
Level: 0
Usage: Mandatory
Max Use: 1
Purpose: A service segment ending a message, giving the total number of segments in the message (including the UNH & UNT) and the control reference number of the message.

Comments:

Notes: *Sample segment :*
 UNT+23+AAAA096944'

Data Element Summary

Data Component			
<u>Element</u>	<u>Element Name</u>		
Attributes			
M	0074	NUMBER OF SEGMENTS IN A MESSAGE Total number of segments in the message	M 1 n..6
M	0062	MESSAGE REFERENCE NUMBER Message reference identical to e0062 in UNH segment	M 1 an..14

7. SAMPLE MESSAGE

UNB+UNOA:2+Q4867002J+A95095691+080108:1531+AAAA096944'
UNH+AAAA096944+COREOR:D:00B:UN:SMDG20'
BGM+129+800255846+9'
DTM+137:200211211523:203'
RFF+ZZZ:1'
RFF+CN:0123456789'
DTM+36:20100530:102'
DTM+203:201005311200:203'
TDT+20++1++A1234567:172:ZZZ+++7104673:146:11:MSC CLAUDIA:PA'
RFF+ABT:48119501234'
RFF+VON:2010DGXS003'
LOC+11+BEANR:139:6+A95095691:72:ZZZ'
DTM+132:201005290800:203'
DTM+133:201005301800:203'
NAD+MS+A1234567:172:ZZZ'
CTA+IC+:STAN MATTHEWS'
COM+494030012967:TE'
EQD+CN+XXXU9876543+4532:102:5+++5'
MEA+AAE+G+KGM:10474'
MEA+AAE+CT+E13:64'
DIM+8+CMT::12'
TMP+2+-18:CEL'
SEL+87579855'
FTX+AAA+++CHOCOLATES'
TDT+30++3++A1234567:172:ZZZ'
DGS+IMD+3+2058'
CNT+1:1'
UNT+27+AAAA096944'
UNZ+1+AAAA096944'