

Guía del Usuario del COPARN para Admitase de Contenedores Llenos y Vacíos y Entréguese de Contenedores Vacíos



Autoridad Portuaria de
Bilbao

ePuertoBilbao



Autoridad Portuaria de Bilbao

Message type: COPARN
Version: D
Release: 00B
Contr.Agency: UN

Status: 1
Date: 96-10

Author: e-puertobilbao (v1.0)
Date: Abril 2010
Based on: SMDG 1.2

CONTENTS

0. INTRODUCTION.....	3
1. GENERAL	3
2. STATUS INDICATORS AND USAGE INDICATORS	4
3. DOCUMENT MAINTENANCE	4
4. SEGMENT TABLE	6
5. MESSAGE STRUCTURE DIAGRAM	8
6. MESSAGE DESCRIPTION	11

0. INTRODUCTION

This User Manual has been developed by the SMDG User Group for Shipping Lines and Container Terminals, a "Global User Group" under the auspices of UN/CEFACT.

This User Manual is based upon the UN/EDIFACT D.00B directory and the ITIGG documents "International Reference Guideline for the implementation of transport EDI messages - COPARN Container Announcement message", version 1.4, dated March 1998 and "Principles and Rules for the implementation of transport EDI messages - Transport Equipment Movements - Maritime-related container messages", version 1.3.1, dated September 1996.

This User Manual provides guidance as to the recommended usage of codes, qualifiers, data elements, composites, segments and groups of segments in the D.00B COPARN message. The intention is to assist developers to ensure consistent use of the COPARN message throughout the worldwide trade and transport community.

1. GENERAL

Formal Definition

"The message contains an order to release, to make available, to accept or to call down containers or to announce the impending arrival of containers. This message is part of a total set of container-related messages. These messages serve to facilitate the intermodal handling of containers by streamlining the information exchange. The business scenario for the container messages is clarified in a separate document, called "Guide to the scenario of EDIFACT container messages".

The COPARN message is intended to perform a variety of instruction or request functions associated with equipment movements which are to occur at a future time, such as authorising release of an empty container for packing, or authorising acceptance of a container by a facility. Examples include:

- requesting or authorising acceptance of an empty return
- requesting or authorising acceptance of a full container
- releasing an empty container for packing
- requesting and authorising an on/off hire transaction

2. STATUS INDICATORS AND USAGE INDICATORS

Status Indicators

Status Indicators ("M" and "C") form part of the UN/EDIFACT standard and indicate a minimum requirement to fulfil the needs of the message structure. They are not adequate for implementation purposes. The Status Indicators are :

<i>Value</i>	<i>Description</i>
M	Mandatory The entity marked as such must appear in all messages, and apply to these messages as well as to any associated implementation guidelines (and consequently is also a Usage Indicator).
C	Conditional The entity is used by agreement between trading partners.

Usage Indicators

Usage Indicators are implementation-related indicators that further detail the use of "Conditional" Status Indicators. Usage Indicators are applied at all levels of the guidelines and shown adjacent to data items such as segment groups, segments, composite data elements and simple data elements. They dictate the agreed usage of the data items or entities. The Usage Indicators are :

<i>Value</i>	<i>Description</i>
M	Mandatory Indicates the item is mandatory in the UN/EDIFACT message.
R	Required Indicates the item must be transmitted in this implementation.
D	Dependent Indicates that the use of the item is depending on a well-defined condition or set of conditions. These conditions must be clearly specified in the relevant implementation guideline.
O	Optional Indicates that this item is at the need or discretion of both trading partners.
X	Not Used Indicates that this item is not to be used in this implementation.

Where an item within a segment group, segment or composite data element is marked with Usage Indicators "M" or "R", but the segment group, segment or composite data element has been marked "O" or "D" (or for that matter "X"), the item is only to be transmitted when the segment group, segment or composite of which it is a part, is used.

3. DOCUMENT MAINTENANCE

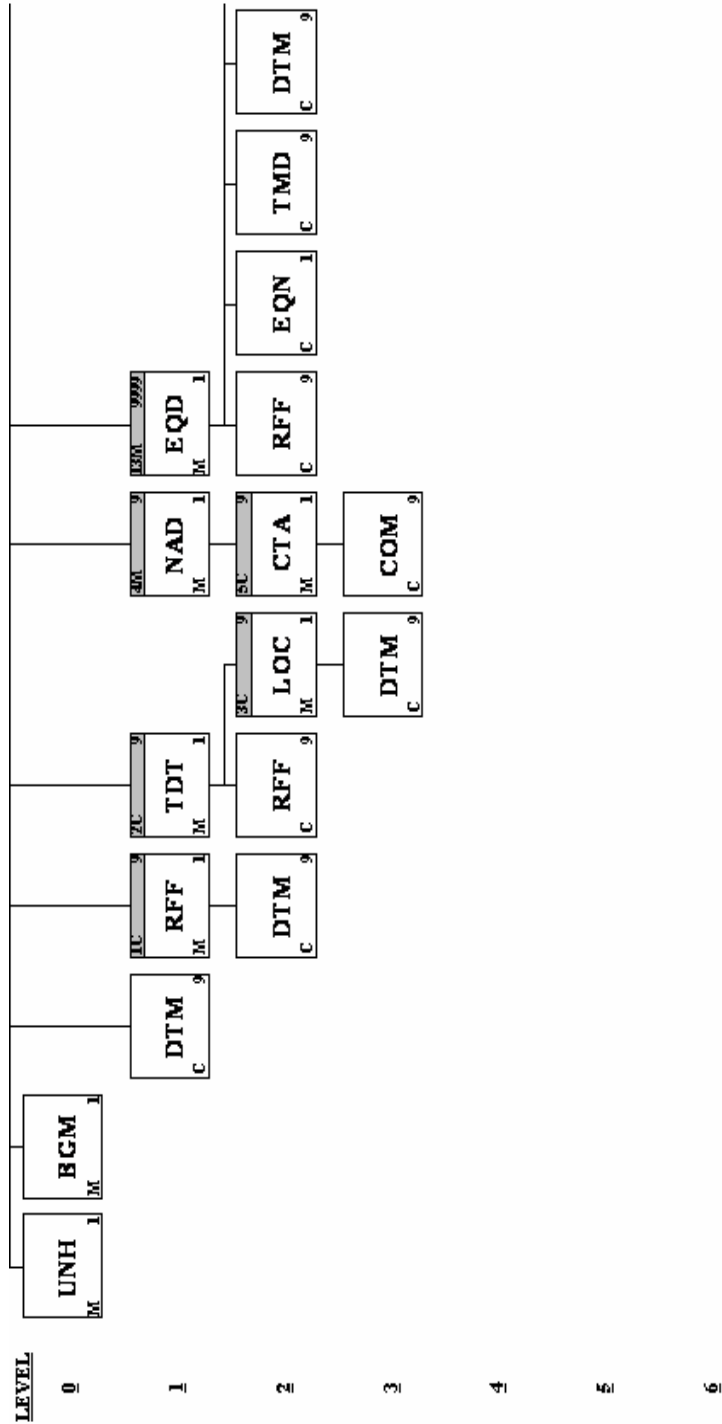
- **Versión 1.0 (Abril 2010)**
 - o Primera versión.
-

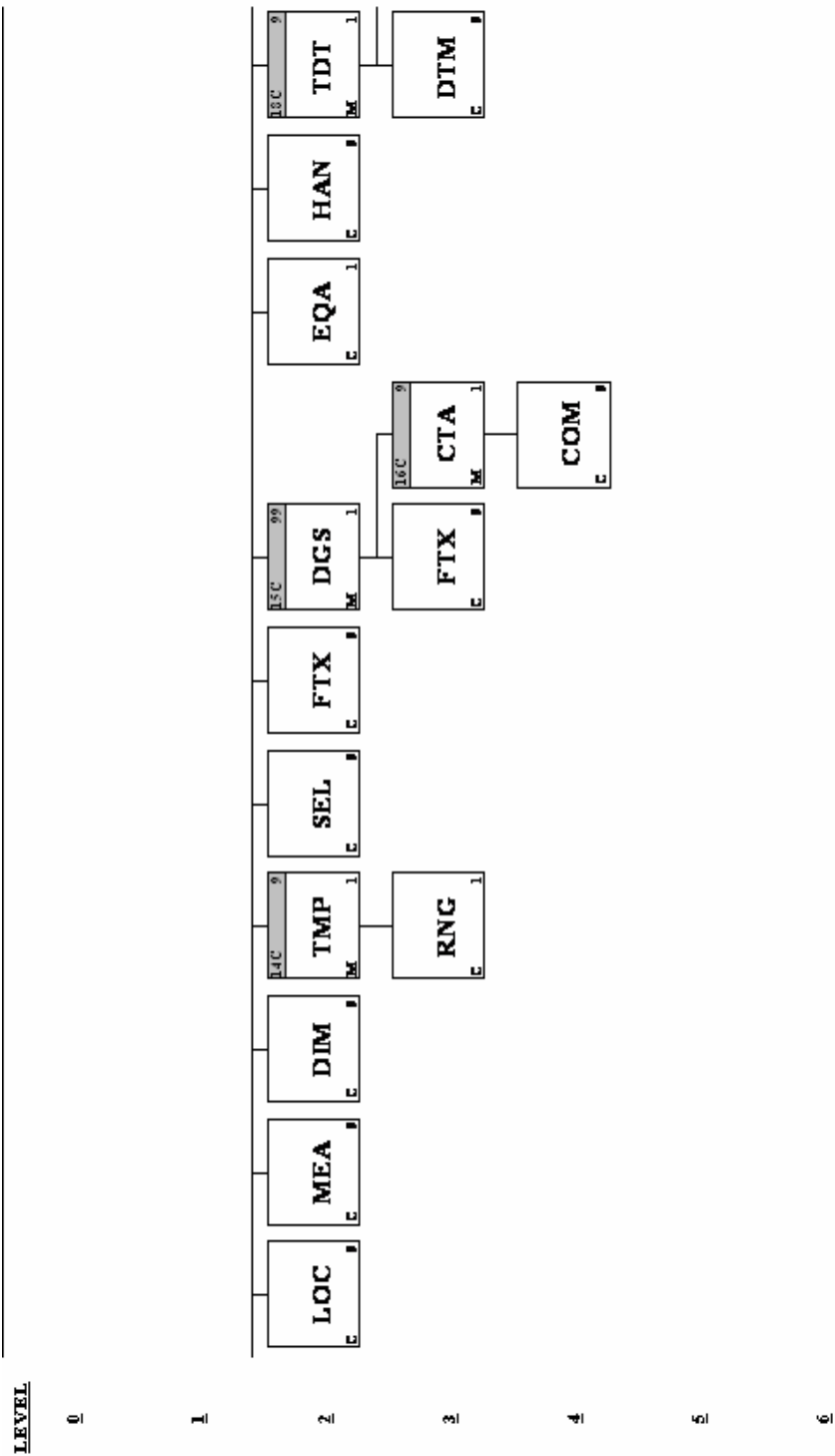
4. SEGMENT TABLE

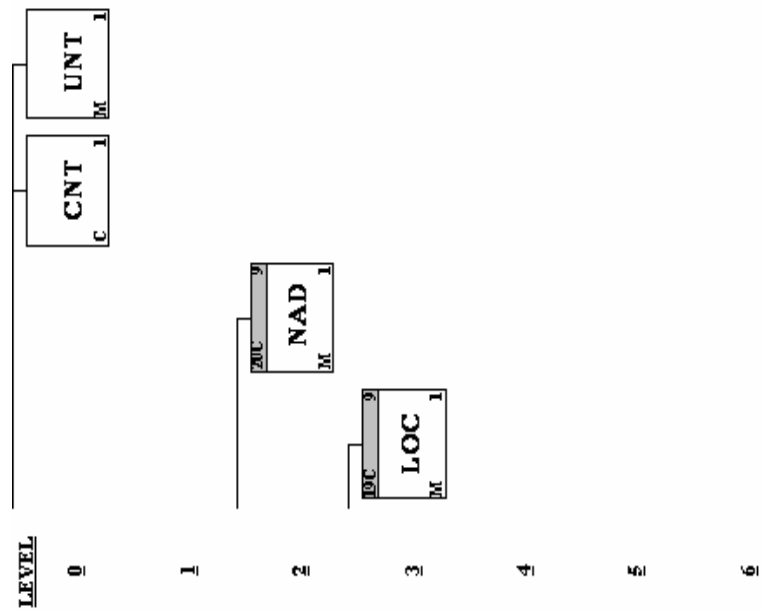
This is the Subset for Port of Bilbao Port Community System e-puertobilbao of SMDG standard.

	Pos.	Seg. ID Name	Description	Req.	Max. Use	Group Repeat	Max. use by Port of Bilbao Subset
M	0010	UNH	Message Header	M	1		1
M	0020	BGM	Beginning of Message	M	1		1
R	0040	DTM	Date/Time/Period	C	9		1
M	0080		Segment Group 1: RFF-DTM	M		9	4
M	0090	RFF	Reference	M	1		1
O	0100	DTM	Date/Time/Period	C	9		1
O	0110		Segment Group 2: TDT-RFF-SG3	C		9	1
M	0120	TDT	Details of Transport	M	1		1
O	0140	RFF	Reference	C	9		2
O	0150		Segment Group 3: LOC-DTM	C		9	2
M	0160	LOC	Place/Location Identification	M	1		1
O	0170	DTM	Date/Time/Period	C	9		1
M	0180		Segment Group 4: NAD-SG5	M		9	3
M	0190	NAD	Name and Address	M	1		1
O	0200		Segment Group 5: CTA-COM	C		9	1
M	0210	CTA	Contact Information	M	1		1
O	0220	COM	Communication Contact	C	9		5
M	0540		Segment Group 13: EQD-RFF-EQN-TMD-DTM-LOC-MEA-DIM-SG14-SEL-FTX-SG15-EQA-HAN-SG18-SG20	C		9999	1
M	0550	EQD	Equipment Details	M	1		1
R	0560	RFF	Reference	M	9		2
O	0570	EQN	Number of Units	C	1		1
O	0620	MEA	Measurements	C	9		2
O	0630	DIM	Dimensions	C	9		5
O	0640		Segment Group 14: TMP-RNG	C		9	1
M	0650	TMP	Temperature	M	1		1
O	0670	SEL	Seal Number	C	9		1
O	0680	FTX	Free Text	C	9		1
O	0700		Segment Group 15: DGS-FTX-SG16	C		9	1
M	0710	DGS	Dangerous Goods	M	1		1
O	0850		Segment Group 18: TDT-DTM-SG19	M		9	1
M	0860	TDT	Details of Transport	M	1		1
R	0970	CNT	Control Total	C	1		1
M	0980	UNT	Message Trailer	M	1		1

5. MESSAGE STRUCTURE DIAGRAM







6. MESSAGE DESCRIPTION

UNB Interchange Header

Position: 0000
Group:
Level: 0
Usage: Mandatory
Max Use: 1
Purpose: The UNB segment is used to head, identify and specify an interchange

Comments:
Notes: *Sample segment :*

**UNB+UNOA:2+Q4867002J+A95095691+080108:1531+COPARN0001
 234'**

Data Element Summary

Data Component		Element Name			
Element	Element	Name			
Attributes					
M	S001	0001	SYNTAX IDENTIFIER	M	1 an..4
			Syntax identifier 'UNOA', indicating the use of level 'A' character set.		
		0002	Syntax version number	M	1 n..1
			2		
M	S002	0004	INTERCHANGE SENDER	M	1 an...35
			Sender identification: name code of the message sender.		
			<u>CIF del consignatario emisor</u>		
M	S003	0010	INTERCHANGE RECIPIENT	M	an..35
M			Recipient identification: name code of the message recipient.		
			<u>CIF del destinatario</u>		
M	S004		DATE AND TIME OF PREPARATION		
M		0017	Date of preparation: (format YYYYDD)	M	n..6
M		0019	Time of preparation: (format HHMM)	M	n..4
M		0020	INTERCHANGE CONTROL REFERENCE:	M	an..14
			reference allocated by the sender, uniquely identifying the interchange. This reference must also be transmitted in the UNZ segment.		

UNH Message Header

Position: 0010
Group:
Level: 0
Usage: Mandatory
Max Use: 1

Purpose: A service segment starting and uniquely identifying a message. The message type code for the Container announcement message is COPARN.

Note: Container announcement messages conforming to this document must contain the following data in segment UNH, composite S009:

Data element 0065 COPARN 0052 D 0054 00B
 0051 UN

Comments:

Notes: *Sample segment :*

UNH+0000000006944+COPARN:D:00B:UN:SMDG20'

Data Element Summary

Data Component		Element Element Name	
Attributes			
M	0062	MESSAGE REFERENCE NUMBER	M 1 an..14
		<i>Unique message reference assigned by the sender. This reference must also be transmitted in the UNT segment.</i>	
		<i>En el envío se generará un identificador con el formato EPBAAnnnnnn, donde AA representan los dos últimos dígitos del año</i>	
M	S009	MESSAGE IDENTIFIER	M 1
M		0065 Message type identifier	M an..6
		COPARN Container announcement message	
M		0052 Message type version number	M an..3
		D Draft version/UN/EDIFACT Directory	
M		0054 Message type release number	M an..3
		00B Release 2000 - B	
M		0051 Controlling agency	M an..2
		UN UN/CEFACT	
R		0057 Association assigned code	C an..6
		SMDG20 SMDG Version 2.0	

BGM Beginning of Message

Position: 0020
Group:
Level: 0
Usage: Mandatory
Max Use: 1

Purpose: A segment to indicate the beginning of a message and to transmit identifying number and the further specification of the message type (in data element 1001: Document name code), such as Empty container disposition order, Release order, Pre- arrival notice, Acceptance order, Empty container notice, Call- down order, On-hire request, On-hire order, Off-hire request, Off-hire notice.

Comments:

Notes: *Sample segment :*

BGM+126+800255846+9'

Data Element Summary

Data Component		Element Name			
Element	Component	Element Name			
Attributes					
R	C002	DOCUMENT/MESSAGE NAME	C	1	
R		1001 Document name code	C	an..3	
		125 Transport empty equipment advice - Admitase Vacío			
		126 Transport equipment acceptance order - Admitase Lleno			
		144 Empty container disposition order - Entréguese Vacío			
✘		1131 Code list identification code	€	an..17	
✘		3055 Code list responsible agency code	€	an..3	
✘		1000 Document name	€	an..35	
R	C106	DOCUMENT/MESSAGE IDENTIFICATION	C	1	
R		1004 Document identifier	C	an..35	
		<i>Sender's unique reference number</i>			
		<i>Se enviará el ED UNH.0062</i>			
✘		1056 Version identifier	€	an..9	
✘		1060 Revision identifier	€	an..6	
R	1225	MESSAGE FUNCTION CODE	C	1 an..3	
		<i>If code 1 or 5 is used, reference number of the message which is being cancelled/replaced must appear in the header level RFF using the code ACW in e1153.</i>			
		1 Cancellation			
		5 Replace			
		9 Original			

DTM Date/Time/Period

Position: 0040
Group:
Level: 1
Usage: Conditional (Required)
Max Use: 1

Purpose: A segment to indicate a date and time applying the message as a whole: - requested equipment positioning date and/or time - expected on-hire date and/or time - expected return period

Comments:

Notes: *Sample segment :*

DTM+137:200211211523:203'

Data Element Summary

Data Component		Data Element Summary			
Element	Element Name				
<u>Attributes</u>					
M	C507	DATE/TIME/PERIOD		M	1
M	2005	Date or time or period function code qualifier		M	an..3
		137 Document/message date/time			
R	2380	Date or time or period value Date/time that the message was prepared.		C	an..35
R	2379	Date or time or period format code		C	an..3
		203 CCYYMMDDHHMM			

RFF Reference

Position: 0090 (Trigger Segment)
Group: Segment Group 1 (Reference) Mandatory
Level: 1
Usage: Mandatory
Max Use: 5

Purpose: A segment to express a reference which applies to the entire message

Comments:

Notes: *Sample segment :*

RFF+ZZZ:1'
RFF+BN:800255846'

Data Element Summary

Data Component		Element		Element Name	
Attributes					
M	C506	REFERENCE		M	1
M	1153	Reference code qualifier		M	an..3
		ACW	Reference number to previous message		
		BN	Booking reference number - <u>Admítase lleno y vacío</u>		
		CN	Carrier's reference number - <u>Entréguese de vacíos</u>		
		ZZZ	Mutually defined reference number		
R	1154	Reference identifier		C	an..70
		Reference number			
		<u>Si ACW: BGM.1004 del mensaje COPARN Original</u>			
		<u>'1' - dummy value (en caso de 'ZZZ' en 1153)</u>			
		<u>Si AAY: N° de Entréguese/Admítase</u>			

La primera función de este segmento será obligatoria con el calificador ZZZ y un 1 en el ED 1154.

La segunda función de este segmento será necesaria en el caso de los reemplazos y las cancelaciones con el calificador ACW y el número de referencia del primer envío respecto al que se quiere realizar la modificación en el ED 1154.

La tercera función de este segmento con el calificador CN (Entréguese de vacíos) o BN (Admítase lleno y vacío) es opcional, o se indica en este segmento, con lo cual sería la misma referencia de consignatario o booking para todos los EQDs o se indica a nivel de EQD, con lo que se podrían indicar distintas referencias de consignatario o bookings para los distintos EQDs.

DTM Date/Time/Period

Position: 0100
Group: Segment Group 1 (Reference) Conditional
 (Optional)
Level: 2
Usage: Conditional (Optional)
Max Use: 1
Purpose: A segment to indicate date and/or time related to the reference.

Notes: **Comments:**
Sample segment :

DTM+36:20021130:102'

Data Element Summary

Data Component		Element		Element Name	
<u>Attributes</u>					
M	C507	DATE/TIME/PERIOD		M	1
M		2005	Date or time or period function code qualifier	M	an..3
		36	<i>Expiry date - - Fecha Validez</i>		
			<i>Entréguese vacíos ó Admítase</i>		
		203	<i>Execution date/time, requested</i>		
			<i>Fecha-Hora Solicitada Entrega en</i>		
			<i>Destino ó Fecha-Hora Solicitada</i>		
			<i>Entrega en Terminal para Entréguese</i>		
			<i>vacíos ó Admítase respect.</i>		
R		2380	Date or time or period value	C	an..35
			<i>Date or date/time</i>		
R		2379	Date or time or period format code	C	an..3
		102	<i>CCYYMMDD si ED C507.2005=36</i>		
		203	<i>CCYYMMDDHHMM si ED C507.2005=203</i>		

TDT Details of Transport

Position: 0120 (Trigger Segment)
Group: Segment Group 2 (Details of Transport)
 Conditional (Optional)
Level: 1
Usage: Mandatory
Max Use: 1
Purpose: A segment to indicate information related to the main carriage stage of the transport (sea)

Comments:
Notes: *Sample segment :*

**TDT+20++1++A1234567:172:ZZZ+++7104673:146:11:MSC
 CLAUDIA:PA'**

Data Element Summary

Data Component		Element Name				
Element						
Attributes						
M	8051	TRANSPORT STAGE CODE QUALIFIER		M	1	an..3
		20	Main-carriage transport			
Ø	Ø02Ø	MEANS OF TRANSPORT JOURNEY IDENTIFIER		Ø	±	an..17
		Vessel operator's voyage number				
R	C220	MODE OF TRANSPORT		C	1	
R		8067	Transport mode name code	C		an..3
		1	Maritime transport (ocean)			
		2	Rail			
✖	Ø066	Transport mode name		Ø	±	an..17
Ø	Ø22Ø	TRANSPORT MEANS		Ø	±	an..17
Ø	Ø17Ø	Transport means description code		Ø	±	an..Ø
		Means of transport code (UN/ECE Recommendation 28)				
Ø	Ø17Ø	Transport means description		Ø	±	an..17
		Type of means of transport (free text)				
R	C040	CARRIER		C	1	
R		3127	Carrier identifier	C		an..17
			CIF Consignatario Buque (Vessel operator's VAT code) Ø			
			CIF Operador Ferroviario (Train operator's VAT code)			
O		1131	Code list identification code	C		an..17
		172	Carriers			
O		3055	Code list responsible agency code	C		an..3
			Temporary code			
		ZZZ	Mutually defined			
Ø	Ø12Ø	Carrier name		Ø	±	an..35
		Vessel operator's name (free text)				
✖	Ø101	TRANSIT DIRECTION INDICATOR CODE		Ø	±	an..3
✖	Ø401	EXCESS TRANSPORTATION INFORMATION		Ø	±	an..3
✖	Ø457	Excess transportation reason code		M	±	an..3
✖	Ø45Ø	Excess transportation responsibility code		M	±	an..3
✖	Ø130	Customer shipment authorisation identifier		Ø	±	an..17
O	C222	TRANSPORT IDENTIFICATION		C	1	
O		8213	Transport means identification name identifier	C		an..9
			(if 8067 = 1) Lloyd's (IMO) number			

		<i>(if 8067 = 2) Train ID/Number</i>		
O	1131	Code list identification code	C	an..17
		146		Means of transport identification <i>(if</i>
				<i>8067 = 1)</i>
O	3055	Code list responsible agency code	C	an..3
		11		Lloyd's register of shipping <i>(if 8067 =</i>
				<i>1)</i>
O	8212	Transport means identification name	C	an..35
				Vessel name (free text) <i>(if 8067 = 1)</i>
O	8453	Transport means nationality code	C	an..3
				Flag of means of transport (ISO country code) <i>(if</i>
				<i>8067 = 1)</i>

RFF Reference

Position: 0140
Group: Segment Group 2 (Details of Transport)
 Conditional (Optional)
Level: 2
Usage: Conditional (Optional)
Max Use: 2
Purpose: A segment to provide a reference for the liner service, such as: - conference - marketing organization - syndicate - vessel sharing agreement

Notes: **Comments:**
Sample segment :

RFF+ABT:48119501234'

Data Element Summary

Data Component		Element Name			
Attributes					
M	C506	REFERENCE		M	1
M		1153	Reference code qualifier	M	an..3
			VON Voyage number		
			ABT N° Escala/N° Declaración Sumaria		
R		1154	Reference identifier	C	an..70
			Alternative (non vessel operator's) voyage number (if C506.e1153 = 'VON')		
			<u>N° Escala/Sumaria si C506.1153=ABT</u>		

LOC Place/Location Identification

Position: 0160 (Trigger Segment)
Group: Segment Group 3 (Place/Location Identification)
 Conditional (Optional)
Level: 2
Usage: Mandatory
Max Use: 2
Purpose: A segment to specify a location associated with a transport stage such as final port or place of discharge or loading.

Comments:
Notes: *Sample segment :*

Admítase

LOC+9+ESBIO:139:6+A95095691:72:ZZZ'
LOC+11+BEANR:139:6+BE123:72:ZZZ'

Entréguese de Vacíos

LOC+11+ESBIO:139:6+A95095691:72:ZZZ'

Data Element Summary

Data Component		Element Name			
Element	Element Name				
Attributes					
M	3227	LOCATION FUNCTION CODE QUALIFIER		M	1 an..3
		9	Place/port of loading (<i>Admítase</i>)		
		11	Place/port of discharge (<i>Entréguese de vacíos, Admítase de contenedores llenos y vacíos</i>)		
R	C517	LOCATION IDENTIFICATION		C	1
O		3225	Location name code	C	an..25
			<i>UNLOCODE</i>		
O		1131	Code list identification code	C	an..17
			139 Port		
O		3055	Code list responsible agency code	C	an..3
			6 UN/ECE (United Nations Commission for Europe)	-	Economic
⊖	3224	Location name	Port name (free text)	⊖	an..256
O	C519	RELATED LOCATION ONE IDENTIFICATION		C	1
O		3223	First related location name code	C	an..25
			<i>1st related location code</i>		
			CIF Terminal Contenedores		
O		1131	Code list identification code	C	an..17
			72 Container terminal		
O		3055	Code list responsible agency code	C	an..3
			<i>Temporary code</i>		
			ZZZ Mutually defined		

La primera ocurrencia de este segmento se incluirá para indicar el Puerto de Carga (LOC+9) en un Admítase ó el Puerto de Descarga (LOC+11) en un Entréguese de Contenedores Vacíos.

La segunda ocurrencia de este segmento se utilizará únicamente cuando se trate un Admítase, indicando el Puerto de Descarga (LOC+11) de la Mercancía y la Terminal de Destino codificada.

DTM Date/Time/Period

Position: 0170
Group: Segment Group 3 (Place/Location Identification)
 Conditional (Optional)
Level: 3
Usage: Conditional (Optional)
Max Use: 1
Purpose: A segment to specify date(s) and time(s) related to a location.

Notes: **Comments:**
Sample segment :

DTM+132:200212290600:203'

Data Element Summary

Data Component		Data Element Summary			
Element	Element Name				
<u>Attributes</u>					
M	C507	DATE/TIME/PERIOD	M	1	
M	2005	Date or time or period function code qualifier	M	an..3	
		132			Arrival date/time, estimated - <u>ETA</u>
		133			Departure date/time, estimated - <u>ETD</u>
R	2380	Date or time or period value Arrival/departure date/time	C	an..35	
R	2379	Date or time or period format code	C	an..3	
		203			CCYYMMDDHHMM

NAD Name and Address

Position: 0190 (Trigger Segment)
Group: Segment Group 4 (Name and Address)
Mandatory
Level: 1
Usage: Mandatory
Max Use: 3
Purpose: A segment to identify the party's name and address
Comments:

Notes: *Sample segment :*

NAD+MS+A1234567:172:ZZZ'

Data Element Summary

Data Component		Element		Element Name	
<u>Attributes</u>					
M	3035	PARTY FUNCTION CODE QUALIFIER	M	1	an..3
		CA			<i>Carrier (Principal)</i>
		HR			<i>Shipping line service (Línea)</i>
		MS			<i>Document/message issuer/sender</i>
					<i>CIF Consignatario emisor (Agente)</i>
		OY			<i>Ordering customer</i>
					<u><i>Delivery subcontractor</i></u>
					<i>CIF Transitario responsable del</i>
					<i>transporte cedido (Opcional)</i>
		TR			<i>CIF DEPOT ó Terminal recogida</i>
					<i>contenedor vacío (Opcional, solo para</i>
					<i>Admítase de Contenedores llenos)</i>
O	C082	PARTY IDENTIFICATION DETAILS	C	1	
M	3039	Party identifier	M		an..35
		Company code			
O	1131	Code list identification code	C		an..17
		172			<i>Carriers</i>
O	3055	Code list responsible agency code	C		an..3
		Temporary code			

El primer NAD codificado con el CIF del Consignatario llevará el calificador MS (Document/message issuer/sender) indicando el emisor del mensaje y es un segmento obligatorio.

El NAD para indicar Terminal/Depot de recogida del contenedor vacío, previo al llenado, es opcional, exclusivamente para el caso de Admítases de contenedores llenos.

El NAD para indicar el Transitario es opcional.

CTA Contact Information

Position: 0210 (Trigger Segment)
Group: Segment Group 5 (Contact Information)
 Conditional (Optional)
Level: 2
Usage: Mandatory
Max Use: 1
Purpose: A segment to identify a person or department of a message sender and/or message recipient, such as: - information contact

Notes: **Comments:**
Sample segment :

CTA+IC+:STAN MATTHEWS'

Data Element Summary

Data Component		Element Name		
Element	Component	Name	Usage	Length
Attributes				
R	3139	CONTACT FUNCTION CODE	C	1 an..3
		<i>IC Information contact</i>		
R	C056	DEPARTMENT OR EMPLOYEE DETAILS	C	1
X	3413	Department or employee name code	C	an..17
R	3412	Department or employee name	C	an..35
		<i>Contact name</i>		

COM Communication Contact

Position: 0220
Group: Segment Group 5 (Contact Information)
 Conditional (Optional)
Level: 3
Usage: Conditional (Optional)
Max Use: 5
Purpose: A segment to identify a communication number of a person or department to whom communication should be directed.

Comments:

Notes: *Sample segment :*

COM+0198562395:TE'

Data Element Summary

Data Component		Data Element Summary		
Element	Element Name			
Attributes				
M	C076	COMMUNICATION CONTACT	M	3
M	3148	Communication address identifier <i>Contact number</i>	M	an..512
M	3155	Communication address code qualifier	M	an..3
		<i>EM</i>		<i>Electronic mail</i>
		<i>FX</i>		<i>Telefax</i>
		<i>TE</i>		<i>Telephone</i>
		<i>TL</i>		<i>Telex</i>
		<i>XF</i>		<i>X.400 address</i>

EQD Equipment Details

Position: 0550 (Trigger Segment)
Group: Segment Group 13 (Equipment Details)
 Conditional (Optional)
Level: 1
Usage: Mandatory
Max Use: 9999
Purpose: A segment to specify a container, container size and type, and full/empty indication;
Comments:

Notes: *Sample segment :*

EQD+CN+XXXU1234567+4532:102:5+++5'

Data Element Summary

Data Component		Element Name		
Attributes	Element	Element Name		
M	8053	EQUIPMENT TYPE CODE QUALIFIER	M	1 an..3
		<i>BB Break bulk - Mercancía General</i>		
		<i>CN Container con matrícula estándar</i>		
		<i>SW Swap body con matrícula libre</i>		
O	C237	EQUIPMENT IDENTIFICATION	C	1
R	8260	Equipment identifier	C	an..17
		<i>Marks (letters/numbers) identifying equipment. To be transmitted as they appear on the equipment.</i>		
		<i>Sí 8053 = CN -> Se validará que conste de 4 caracteres + 7 dígitos ó 1 carácter + 1 ó 2 dígitos para cisternas</i>		
		<i>Sí 8053 = SW ó TE -> No se valida la matrícula</i>		
		<i>Sí 8053 = BB -> En Blanco</i>		
✕	1131	Code list identification code	C	an..17
✕	3055	Code list responsible agency code	C	an..3
✕	3207	Country name code	C	an..3
D	C224	EQUIPMENT SIZE AND TYPE	C	1
O	8155	Equipment size and type description code	C	an..10
		<i>Equipment size/type code as per ISO6346 (.1 or.2, .2 preferred)</i>		
		<i>Se validará en función de las dos últimas cifras en codificación ISO6346 e ISO6346:1995 si son cisternas.</i>		
		<i>Sí 8053 = BB -> En Blanco</i>		
O	1131	Code list identification code	C	an..17
		<i>102 Size and type</i>		
O	3055	Code list responsible agency code	C	an..3
		<i>5 ISO (International Organization for Standardization)</i>		
⊖	8154	Equipment size and type description	C	an..35
⊖	8077	EQUIPMENT SUPPLIER CODE	C	1 an..3
⊖	8249	EQUIPMENT STATUS CODE	C	1 an..3
R	8169	FULL OR EMPTY INDICATOR CODE	C	1 an..3
		<i>4 Empty</i>		
		<i>5 Full</i>		

RFF Reference

Position: 0560
Group: Segment Group 13 (Equipment Details)
Mandatory
Level: 2
Usage: Conditional (Required)
Max Use: 3

Purpose: A segment to express a reference which applies to the particular container, such as: - container sequence number - lower equipment serial number of range - upper equipment serial number of range - referring sequence number - reference at place of positioning - reference at place of collection - related container announcement reference (reference to Empty container disposition order) - transport costs reference number - carrier agent's reference number - freight forwarder's reference

Comments:

Notes: *Sample segment :*

RFF+BN:GBBIO12345'

Data Element Summary

Data Component	Element	Element Name		
<u>Attributes</u>				
M	C506	REFERENCE	M	1
M	1153	Reference code qualifier	M	an..3
		BN Booking reference number - <u>Admítase Lleno y vacío</u>		
		CN Carrier's reference number - <u>Entréguese de vacíos</u>		
R	1154	Reference identifier	C	an..70
		Reference number		

Sí se indica el N° Booking (Admítase de Llenos o Vacíos) o el N° de Referencia del Consignatario (Entréguese de Vacíos) a nivel de cabecera no se podrá indicar a nivel de EQD, sí no se indica a nivel de cabecera será obligatorio que se indique a nivel de EQD para todos los EQDs del mensaje, pudiendo ser distinto o no para todos los EQDs.

EQN Number of Units

Position: 0570
Group: Segment Group 13 (Equipment Details)
 Conditional (Optional)
Level: 2
Usage: Conditional (Optional)
Max Use: 1
Purpose: A segment to specify the number of containers of the same size and type in case of equipment guidelines.

Comments:

Notes: *Sample segment :*

EQN+1'

Data Element Summary

Data Component		Element		Element Name			
<u>Attributes</u>							
M	C523		NUMBER OF UNIT DETAILS	M		1	
R		6350	Units quantity <i>Number of units</i>	C		n..15	
X		6353	Unit type code qualifier	C		an..3	

Este segmento será obligatorio si se trata de contenedores vacíos y no se ha indicado el N° Contenedor

MEA Measurements

Position: 0620
Group: Segment Group 13 (Equipment Details)
 Conditional (Optional)
Level: 2
Usage: Conditional (Optional)
Max Use: 2
Purpose: A segment to specify measurement, other than dimensions, associated with the container, such as: - tare weight - gross weight
Comments:
Notes: *Sample segment :*

MEA+AAE+G+KGM:10474'
MEA+AAE+CT+E13:64'

Data Element Summary

Data Component		Element Name			
Element	Element Name				
Attributes					
M	6311	MEASUREMENT PURPOSE CODE QUALIFIER		M	1 an..3
		<i>AAE Measurement</i>			
R	C502	MEASUREMENT DETAILS		C	1
R	6313	Measured attribute code		C	an..3
		<i>G Gross weight (Peso bruto mercancía + tara)</i>			
		<i>CT N° Bultos</i>			
✖	6321	Measurement significance code		E	an..3
✖	6155	Non-discrete measurement name code		E	an..17
✖	6154	Non-discrete measurement name		E	an..70
R	C174	VALUE/RANGE		C	1
M	6411	Measurement unit code		M	an..3
		<i>KGM Kilograms si 6313 G</i>			
		<i>E13 N° Bultos si 6313 CT</i>			
R	6314	Measurement value		C	an..18
		<i>Weight, volume or percentage.</i>			

Si se trata de mercancía general se enviarán dos ocurrencias de este segmento, una para calificador G y otra para calificador CT.

DIM Dimensions

Position: 0630
Group: Segment Group 13 (Equipment Details)
 Conditional (Optional)
Level: 2
Usage: Conditional (Optional)
Max Use: 5
Purpose:- off-standard dimensions, general - off-standard
 dimensions, front - off-standard dimensions, rear - off-standard
 dimensions, right - off-standard dimensions, left - off-standard
 dimensions, height - external equipment dimensions -
 dimensions equipment door - net dimensions

Comments:
Notes: *Sample segment :*

DIM+7+CMT::20'

Data Element Summary

Data Component		Element Name			
Element	Component	Element Name			
Attributes					
M	6145	DIMENSION TYPE CODE QUALIFIER	M	1	an..3
		1			<i>Gross dimensions</i>
					<i>To be used for break bulk only</i>
		5			<i>Off-standard dimension front</i>
		6			<i>Off-standard dimension back</i>
		7			<i>Off-standard dimension right</i>
		8			<i>Off-standard dimension left</i>
		13			<i>Off-standard dimensions height</i>
M	C211	DIMENSIONS	M	1	
M		6411 Measurement unit code	M		an..3
		CMT Centimetres			
D		6168 Length dimension value	C		n..15
		<i>Overall length if e6145 = 1 or 10</i>			
		<i>Overlength if e6145 = 5 or 6</i>			
D		6140 Width dimension value	C		n..15
		<i>Overall width if e6145 = 1 or 10</i>			
		<i>Overwidth if e6145 = 7 or 8</i>			
D		6008 Height dimension value	C		n..15
		<i>Overall height if e6145 = 1 or 10</i>			
		<i>Overheight if e6145 = 13</i>			

Si se trata de mercancía en contenedor, únicamente se utilizará este segmento para indicar extradimensiones (si las hubiera).

Si se trata de mercancía general, se enviará una ocurrencia de este segmento con el calificador 1 y valor en los 3 elementos de datos si se trata de mercancía general.

TMP Temperature

Position: 0650 (Trigger Segment)
Group: Segment Group 14 (Temperature) Conditional
 (Optional)
Level: 2
Usage: Mandatory
Max Use: 1

Purpose: A segment to specify the transport temperature setting of a container.

Comments:

Notes: *Sample segment :*

TMP+2+011:CEL'

Only to be used when a set temperature is to be specified.

Data Element Summary

Data Component		Element Name			
Element	Element Name				
Attributes					
M	6245	TEMPERATURE TYPE CODE QUALIFIER		M	1 an..3
		2	Transport temperature		
R	C239	TEMPERATURE SETTING		C	1
R	6246	Temperature value		C	n..15
		Temperature setting			
R	6411	Measurement unit code		C	an..3
		CEL	Celsius		

SEL Seal Number

Position: 0670
Group: Segment Group 13 (Equipment Details)
 Conditional (Optional)
Level: 2
Usage: Conditional (Optional)
Max Use: 9
Purpose: A segment to identify seal and seal issuer associated with the container, such as shipper, consolidator, carrier (sea) and Customs.

Comments:

Notes: *Sample segment :*

SEL+87579855'

Data Element Summary

Data Component				
Element	Element Name			
<u>Attributes</u>				
R	9308	SEAL IDENTIFIER <i>Seal number</i>	C	1 an..35

FTX Free Text

Position: 0680
Group: Segment Group 13 (Equipment Details)
 Conditional (Optional)
Level: 2
Usage: Conditional (Optional)
Max Use: 1
Purpose: A segment to specify processable supplementary information associated with the container, such as: - loading instructions (seagoing vessel) - special instructions (related to inland transport) - container order information (conditions to be checked) - remarks

Comments:

Notes: *Sample segment :*

FTX+AAA+++CHOCOLATES'

Data Element Summary

Data Component		Data Element Summary		
Element	Element Name			
Attributes				
M	4451	TEXT SUBJECT CODE QUALIFIER	M	1 an..3
		AAA Goods description		
		AAI General information (<i>Observaciones</i>)		
M	4453	FREE TEXT FUNCTION CODE	E	1 an..3
D	C107	TEXT REFERENCE	E	1
M	4441	Free text value code	M	an..17
E	1131	Code list identification code	E	an..17
E	3055	Code list responsible agency code	E	an..3
D	C108	TEXT LITERAL	C	1
M	4440	Free text value	M	an..512
		General information (<i>if e4451 = AAI</i>) :		
		Free text		
		Description of goods (<i>if e4451 = AAA</i>) :		
		Free text		

Si se trata de mercancía general es obligatoria una ocurrencia de este segmento con el calificador AAA.

DGS Dangerous Goods

Position: 0710 (Trigger Segment)
Group: Segment Group 15 (Dangerous Goods)
 Conditional (Optional)
Level: 2
Usage: Mandatory
Max Use: 1
Purpose: A segment to specify dangerous goods.
Comments:

Notes: *Sample segment :*

DGS+IMD+3+1263'

Data Element Summary

Data Component		Data Element Summary		
Element	Element Name			
Attributes				
R	8273	DANGEROUS GOODS REGULATIONS CODE	C	1 an..3
		<i>IMD IMO IMDG code</i>		
R	C205	HAZARD CODE	C	1
M	8351	Hazard identification code	M	an..7
		<i>IMDG Class Number</i>		
		Clase MP		
⊖	8078	Additional hazard classification identifier	⊖	an..7
		IMDG Code page number (english version)		
⊖	8092	Hazard code version identifier	⊖	an..10
		IMDG Code Version number		
O	C234	UNDG INFORMATION	C	1
O	7124	United Nations Dangerous Goods (UNDG) identifier	C	n4
		<i>UNDG Number - N° ONU</i>		

TDT Details of Transport

Position: 0860 (Trigger Segment)
Group: Segment Group 18 (Details of Transport)
Mandatory
Level: 2
Usage: Mandatory
Max Use: 1

Purpose: A segment to specify pre- or on-carriage transport details, such as: * pre- or on-carriage transport * second pre- or on-carriage transport

Comments:
Notes: *Sample segment :*

TDT+10++3++A1234567:172:ZZZ'

Data Element Summary

Data Component		Element Name				
Element	Element Name					
Attributes						
M	8051	TRANSPORT STAGE CODE QUALIFIER		M	1	an..3
		10	Pre-carriage transport - <i>Admitases</i>			
		30	On-carriage transport - <i>Entréguese Vacíos</i>			
⊖	8028	MEANS OF TRANSPORT JOURNEY IDENTIFIER		⊖	1	an..17
		Carrier's voyage number				
R	C220	MODE OF TRANSPORT		C	1	
R	8067	Transport mode name code		C		an..3
		2	Rail			
		3	Road			
⊗	8066	Transport mode name		⊖		an..17
⊖	C228	TRANSPORT MEANS		⊖	1	
⊖	8179	Transport means description code		⊖		an..8
		Means of transport code (UN/ECE recommendation 28)				
⊖	8178	Transport means description		⊖		an..17
		Type of means of transport (free text)				
O	C040	CARRIER		C	1	
O	3127	Carrier identifier		C		an..17
		Carrier code				
		CIF del Transportista Rodado ó del Operador Ferroviario				
O	1131	Code list identification code		C		an..17
		172	Carriers			
O	3055	Code list responsible agency code		C		an..3
		Temporary code				
		ZZZ	Mutually defined			

CNT Control Total

Position: 0970
Group:
Level: 0
Usage: Conditional (Required)
Max Use: 1
Purpose: A segment to specify the number of containers in the message, explicitly given by the sender.

Notes: **Comments:**
Sample segment :

CNT+1:1'
CNT+16:25'

Data Element Summary

Data Component		Element		Element Name	
Attributes					
M	C270	CONTROL		M	1
M	6069	Control total type code qualifier		M	an..3
		1	<i>Algebraic total of the quantity values in line items in a message</i>		
		16	<i>Total number of equipment</i>		
M	6066	Control total value		M	n..18
		Dummy value of 1 (if e6069 = 1)			
		Number of EQD segments in the message (if e6069 = 16)			

UNT Message Trailer

Position: 0980
Group:
Level: 0
Usage: Mandatory
Max Use: 1

Purpose: A service segment ending a message, giving the total number of segments in the message (including the UNH & UNT) and the control reference number of the message.

Comments:

Notes: *Sample segment :*

UNT+28+00000000006944'

Data Element Summary

Data Component			
Element	Element Name		
Attributes			
M	0074	NUMBER OF SEGMENTS IN A MESSAGE <i>Total number of segments in the message</i>	M 1 n..6
M	0062	MESSAGE REFERENCE NUMBER <i>Message reference identical to e0062 in UNH segment</i>	M 1 an..14

7. SAMPLE MESSAGE

UNB+UNOA:2+Q4867002J+A95095691+080108:1531+AAAA096944'
UNH+AAAA096944+COPARN:D:00B:UN:SMDG20'
BGM+126+800255846+9'
DTM+137:200211211523:203'
RFF+ZZZ:1'
DTM+36:20021130:102'
TDT+20++1++A1234567:172:ZZZ+++7104673:146:11:MSC CLAUDIA:PA'
RFF+ABT:48119501234'
LOC+9+ESBIO:139:6+A95095691:72:ZZZ'
LOC+11+BEANR:139:6+BE123:72:ZZZ'
DTM+132:200212290600:203'
NAD+MS+A1234567:172:ZZZ'
CTA+IC+:STAN MATTHEWS'
COM+0198562395:TE'
EQD+CN+XXXU9876543+4532:102:5+++5'
RFF+BN:GBBIO123555'
MEA+AAE+G+KGM:10474'
MEA+AAE+CT+E13:64'
DIM+7+CMT::2'
TMP+2+011:CEL'
SEL+88888888'
TDT+10++3++A1234567:172:ZZZ'
CNT+1:1'
UNT+23+AAAA096944'
UNZ+1+AAAA096944'