

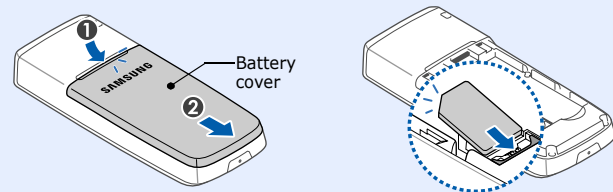
• Depending on the software installed or your service provider or country, some of the descriptions in this guide may not match your phone exactly.
• Depending on your country, your phone and accessories may appear different from the illustrations in this guide.

World Wide Web
http://www.samsungmobile.com

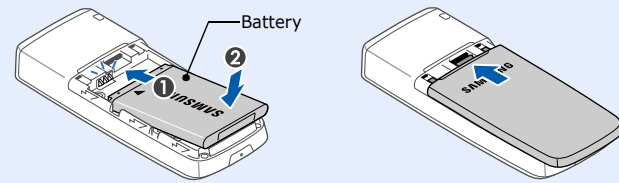
Printed in Korea
Code No.:GH68-17116A
English (EU). 12/2007. Rev. 1.0

Installing the SIM card and battery

1. Remove the battery cover and insert the SIM card.

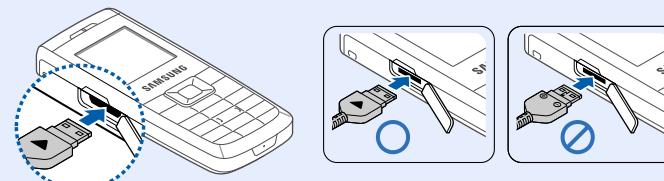


2. Install the battery and reattach the cover.



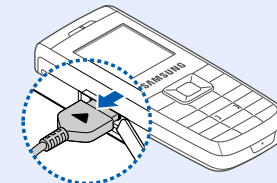
Charging the battery

1. Plug the supplied travel adapter.



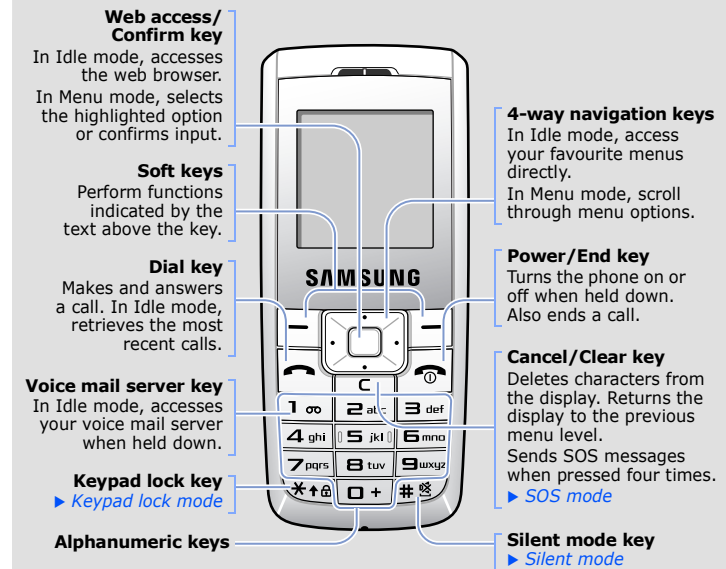
With the triangle facing the front of your phone

2. When charging is finished, unplug the adapter.



Note: Do not remove the battery from the phone without unplugging the adapter first. Otherwise, the phone may be damaged.

Phone layout and key functions



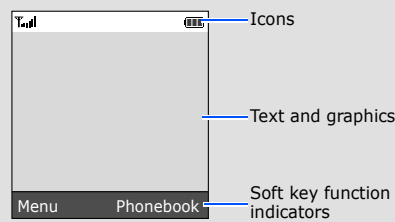
Silent mode Press and hold **#** in Idle mode to disable all sounds on the phone. To exit, press and hold this key again.

SOS mode Press **C** 4 times in Idle mode with the keypad locked to send an SOS message to preset phone numbers. Once the SOS message is sent, the phone will change to SOS mode and will receive calls only from the registered recipients. Upon receiving a call from the SOS message recipients, the phone will automatically answer the call. Press **End call** to exit SOS mode.

Keypad lock mode Press and hold ***** in Idle mode to lock the keypad and ignore accidental key pressing. To unlock, press **Unlock** and then *****.

Display

Your phone is in Idle mode when you are not on a call or using a menu. You must be in Idle mode to dial a phone number.



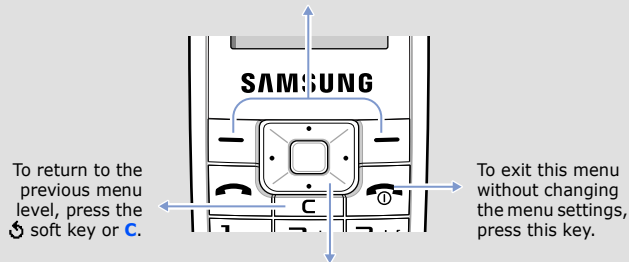
Your phone displays the following status indicators on the top of the screen:

| Icon | Description |
|------|---|
| | Signal strength |
| | Call in progress |
| | Out of your service area; you cannot make or receive calls except for emergency calls |
| | GPRS network |
| | Roaming network |
| | Call ringer set to vibrate |
| | Silent mode |
| | Mute mode, during a call |
| | Call diverting feature active |
| | SOS message feature active |
| | New text message |
| | New multimedia message |
| | New voice mail message |
| | Keys locked |
| | Alarm set |
| | Battery power level |

Using the menus

In Idle mode, press the **Menu** soft key to enter the main menu.

Labels at the bottom corners of the display show the current soft key functions. Press the left soft key (**Left**) or right soft key (**Right**) to perform the function indicated.



To return to the previous menu level, press the **Left** soft key or **C**.

To exit this menu without changing the menu settings, press this key.

Use the 4-way navigation keys as shortcuts to access your favourite menus.

- In Idle mode, press the **Menu** soft key.
- Select **Phone settings** → **Short cut**.
- Select a key.
- Select a menu to be assigned to the key.

To select or modify a menu or feature:

- In Idle mode, press the **Menu** soft key.
- Press the Navigation keys to reach a desired menu and then press the **Select** soft key or **OK**.
- If the menu contains any submenus, locate the one you want by pressing the Navigation keys. Press the **Select** soft key or **OK** to enter the submenu.
If the selected menu contains additional submenus, repeat this step.
- Press the Navigation keys to find the setting of your choice.
- Press the **Select** soft key or **OK** to confirm your chosen setting.

Shortcut numbers

You can quickly access the menu you want by using shortcut numbers. The shortcut number displays in front of the menu name in Menu mode.

Switching on or off the phone

- Press and hold **Power/End key** for more than one second to switch on the phone.
- If the time & date message appears, press the **Yes** soft key and set the time and date by following the onscreen instructions.
- Press and hold **Power/End key** for more than two seconds to switch off the phone.

Changing the display language

- In Idle mode, press the **Menu** soft key.
- Select **Phone settings** → **Language**.
- Select a language.

Making a call

- In Idle mode, enter an area code and phone number, and press **Call**.
- Press **End call** to end the call.

Answering a call

- When the phone rings, press the **Accept** soft key or **Call** to answer a call.
Press the **Reject** soft key or **End call** to reject the call.
- Press **End call** to end the call.

Menu map

| | | |
|----------------------------|----------------------------|--------------------------|
| 1. SIM AT* | 4.7 Alert on call | 7.5 To do list |
| 2. Call records | 4.8 Power on/off | 7.6 Voice memo |
| 2.1 Missed calls | 4.9 Extra tones | 7.7 Currency exchange |
| 2.2 Received calls | 5. Messages | 8. Phonebook |
| 2.3 Dialed calls | 5.1 Text messages | 8.1 Search |
| 2.4 Delete all | 5.2 Multimedia messages | 8.2 New entry |
| 2.5 Call time | 5.3 Push messages | 8.3 Group search |
| 2.6 Call cost* | 5.4 Configuration messages | 8.4 Edit group |
| 3. Network services | 5.5 SOS messages | 8.5 Speed dial |
| 3.1 Call diverting | 6. Funbox | 8.6 Delete all |
| 3.2 Call barring | 6.1 WAP browser | 8.7 Memory status |
| 3.3 Call waiting | 6.2 Games | 8.8 SDN* |
| 3.4 Network selection | 6.3 Sounds | 9. Phone settings |
| 3.5 Caller ID | 6.4 Images | 9.1 Display settings |
| 3.6 Closed user group | 6.5 Delete all | 9.2 Greeting message |
| 4. Sound settings | 6.6 Memory status | 9.3 Own number |
| 4.1 Ring tone | 7. Organiser | 9.4 Language |
| 4.2 Ring volume | 7.1 Alarm | 9.5 Security |
| 4.3 Alert type | 7.2 Calendar | 9.6 Extra settings |
| 4.4 Keypad tone | 7.3 Time & Date | 9.7 Short cut |
| 4.5 Keypad volume | 7.4 Calculator | 9.8 Connection settings |
| 4.6 Message tone | | 9.9 Reset settings |

* Show only if supported by your SIM card.

Entering text

Changing the text input mode

In a text input field, press the right soft key until the input mode indicator you want appears.

T9 mode

- Press **2** to **9** to start entering a word. Press each key once for one letter.

The word you are entering appears on the display. It may change with each keypress. Finish entering the word before editing or deleting any keystrokes.

Example: To enter "Hello" in T9 mode, press **4, 3, 5, 5,** and **6**.

- Press **#** to insert a space and enter the next word.

ABC mode

Press the keys labelled with the letter you want once for the first letter, twice for the second letter, and so on.

For example, press **2** three times to enter "C" and **5** two times to enter "K."

Number mode

Press the keys corresponding to the digits you want.

Symbol mode

Press the number keys corresponding to the symbol you want and press the **OK** soft key. You can press **Up** or **Down** to display more symbols.

Tips for entering text

- To move the cursor, press the Navigation keys.

- To delete characters one by one, press **C**. To clear the display, press and hold **C**.

- To insert a space between characters, press **#**.

- To change case in T9 mode or ABC mode, press *****.

- To enter punctuation marks in T9 mode or ABC mode, press **1**.

| Menu | Description |
|---|---|
| Menu > Messages > Text messages or Multimedia messages > Settings or Setup | Set options for using messaging services. |
| Menu > Messages > Text messages or Multimedia messages > Delete all | Delete messages in each message box or all messages at once. |
| Menu > Messages > Text messages or Multimedia messages > Memory status | Check memory information for messages. |
| Menu > Messages > Multimedia messages > MMS profile | Select or configure a connection profile to be used for MMS. |
| Menu > Messages > Text messages > Voice mail | Access your voice mail server and listen to messages on the network. |
| Menu > Messages > Text messages > Broadcast | Change settings for the service and access broadcast messages. |
| Menu > Messages > Push messages | Change the settings for the service and access or delete push messages. |
| Menu > Messages > Configuration messages | Access or delete messages containing network parameters from your service provider. |

Important safety precautions

Read these guidelines before using your wireless phone. Failure to comply with them may be dangerous or illegal.

Drive safely at all times

Do not use a hand-held phone while driving; park your vehicle first.

Switching off when refuelling

Do not use the phone at a refuelling point (service station) or near fuels or chemicals.

Switching off in an aircraft

Wireless phones can cause interference. Using them in an aircraft is both illegal and dangerous.

Switching off near all medical equipment

Hospitals and health care facilities may be using equipment that could be sensitive to external RF energy. Follow any regulations or rules in force.

Interference

All wireless phones may be subject to interference, which could affect their performance.

Special regulations

Follow any special regulations in force in any area and always switch off your phone whenever it is forbidden to use it.

Water resistance

Your phone is not water-resistant. Keep it dry.

Sensible use


Use only in the normal position (held to your ear). Avoid unnecessary contact with the antenna when the phone is switched on.

Sending an SMS message

- In Idle mode, press the **Menu** soft key.
- Select **Messages** → **Text messages** → **Write new**.
- Enter the message text.
 - Add objects**: add sounds, images, or animated images.
 - Add templates**: add text templates.
 - Add emoticon**: add emoticons.
 - Add phonebook**: add Phonebook contacts.
 - Add bookmark**: add bookmark items.
- Press the **Options** soft key and select **Send only** or **Save and send**.
- If you select **Save and send**, select a memory location.
- Enter destination numbers.
- Press the **Options** soft key and select **Send message** to send the message.

| Menu | Description |
|--|--|
| Menu > Messages > SOS messages | Activate the SOS message feature. Enter recipients and select the repeat mode. |
| Menu > Funbox > WAP browser | Launch and configure the web browser. |
| Menu > Funbox > Games, Sounds, or Images | Access games, sounds, or images in your phone's memory. |
| Menu > Funbox > Delete all | Delete games, sounds, or images in each media box, or all media files at once. |
| Menu > Funbox > Memory status | Check the amount of memory in use for games, sounds, and images. |
| Menu > Organiser > Alarm | Set an alarm to sound at a specific time. |
| Menu > Organiser > Calendar | Keep track of daily or monthly schedule. |
| Menu > Organiser > Time & Date | Set the current time and date manually and set your local time zone. |
| Menu > Organiser > Calculator | Perform basic arithmetic functions. |
| Menu > Organiser > To do list | Create a list of tasks and assign a deadline to each task. |
| Menu > Organiser > Voice memo | Record voice memos and listen to them. |

Emergency calls



Key in the emergency number for your present location, then press . Do not end the call until given permission to do so.

Small children and your phone

Keep the phone and all its parts including accessories out of reach of small children.

Accessories and batteries

Use only Samsung-approved batteries and accessories, such as headsets and PC data cables. Use of any unauthorised accessories could damage your phone and may be dangerous.



| | |
|---|---|
|  | Risk of explosion if a battery is replaced by an incorrect type. Dispose of used batteries according to the instructions. |
|  | At very high volume, prolonged listening to a headset can damage your hearing. |

Qualified service

Only qualified service personnel may repair your phone.

Correct disposal of this product

(Waste Electrical & Electronic Equipment)

| | |
|---|---|
|  | (Applicable in the European Union and other European countries with separate collection systems) |
|  | This marking shown on the product or its literature, indicates that it should not be disposed with other household wastes at the end of its working life. |

Quick feature reference

This section provides brief explanations of features on your phone.

| Menu | Description |
|--|--|
| Menu > SIM AT | Use a variety of additional services offered by your service provider. |
| Menu > Call records > Missed calls, Received calls, or Dialed calls | View the most recent calls you have dialed, received, or missed. |
| Menu > Call records > Delete all | Delete the call logs in each call type or all logs at once. |
| Menu > Call records > Call time | View the duration of recent calls you have dialed and received. Also reset the time counter. |
| Menu > Call records > Call cost | View the cost of your calls. |
| Menu > Network services | Access network services offered by your service provider. |
| Menu > Sound settings > Ring tone or Ring volume | Select a ringtone for incoming calls or a volume level. |
| Menu > Sound settings > Alert type | Select an alert type for the call ringer. |
| Menu > Sound settings > Keypad tone or Keypad volume | Select a tone which the phone sounds when you press a key or a volume level. |

| Menu | Description |
|---|--|
| Menu > Organiser > Currency exchange | Do currency conversions. |
| Phonebook > Search | Search for contacts in Phonebook. |
| Phonebook > New entry | Add a new contact to Phonebook. |
| Phonebook > Group search | Search for Phonebook contacts in caller groups. |
| Phonebook > Edit group | Select a ringtone and image for incoming calls and messages from members of a group. Also change the group name. |
| Phonebook > Speed dial | Assign speed dial numbers (2 to 9) for eight of your most frequently dialled numbers. |
| Phonebook > Delete all | Delete all Phonebook contacts stored in the phone's memory, on the SIM card, or both. |
| Phonebook > Memory status | View the total number of Phonebook contacts in the phone's memory or on the SIM card. |
| Phonebook > SDN | Access the list of service numbers assigned by your service provider. |
| Menu > Phone settings > Display settings | Change settings for the display and backlight. |
| Menu > Phone settings > Greeting message | Enter the greeting message to be displayed when the phone is switched on. |

To prevent possible harm to the environment or human health from uncontrolled waste disposal, please separate this from other types of wastes and recycle it responsibly to promote the sustainable reuse of material resources.

Household users should contact either the retailer where they purchased this product, or their local government office, for details of where and how they can take this item for environmentally safe recycling.

Business users should contact their supplier and check the terms and conditions of the purchase contract. This product should not be mixed with other commercial wastes for disposal.

SAR information

Your wireless phone is a radio transmitter and receiver. It is designed and manufactured not to exceed the emission limits for exposure to radio frequency (RF) energy set by the European Union (EU) Council. These limits are part of comprehensive guidelines and establish permitted levels of RF energy for the general population. The guidelines are based on the safety standards that were developed by independent scientific organisations through periodic and thorough evaluation of scientific studies.

The standards include a substantial safety margin designed to assure the safety of all persons, regardless of age and health.

The exposure standard for wireless phones employs a unit of measurement known as Specific Absorption Rate (SAR). The SAR limit set by the EU Council is 2.0W/kg. The highest SAR value for this model phone was 0.909 W/kg.

| Menu | Description |
|---|--|
| Menu > Sound settings > Message tone | Select the alert ringtone for incoming SMS, MMS, and broadcast messages, or set how often you are informed of a new message. |
| Menu > Sound settings > Alert on call | Set the phone to alert you when you receive a new message or when the time for an alarm comes during a call. |
| Menu > Sound settings > Power on/off | Select the melody that the phone sounds when it is switched on or off. |
| Menu > Sound settings > Extra tones | Set additional tones for the phone. |
| Menu > Messages > Text messages or Multimedia messages > Inbox, Outbox, or Draft | Read received, sent, or saved messages. |
| Menu > Messages > Text messages or Multimedia messages > Write new | Create and send messages to other mobile phones. |
| Menu > Messages > Text messages or Multimedia messages > Templates or Emoticon templates | Preset templates of frequently used messages or emoticons. |

| Menu | Description |
|--|--|
| Menu > Phone settings > Own number | Check your phone numbers or assign a name to them. |
| Menu > Phone settings > Language | Select a language to be used for the display text. |
| Menu > Phone settings > Security | Protect the phone against unauthorised use. |
| Menu > Phone settings > Security > Mobile Tracker | Track your phone when it is stolen or lost. When someone tries to use your phone with other SIM card, the phone will automatically send the preset tracking message to your family or friends. This feature may be unavailable due to certain features supported by your service provider. |
| Menu > Phone settings > Extra settings | Set the automatic redialling feature or the answering method. |
| Menu > Phone settings > Short cut | Set the Navigation keys as shortcuts to access your favourite menus directly. |
| Menu > Phone settings > Connection settings | Create and customise the profiles containing the settings for connecting your phone to the network. |
| Menu > Phone settings > Reset settings | Reset the phone to the factory default settings. |

SAMSUNG
ELECTRONICS



Declaration of Conformity (R&TTE)

We, **Samsung Electronics**

declare under our sole responsibility that the product

GSM Mobile Phone : SGH-B100

to which this declaration relates, is in conformity with the following standards and/or other normative documents.

| | |
|--------|--|
| SAFETY | EN 60950-1 : 2001 +A11:2004 |
| EMC | EN 301 489-01 V1.5.1 (11-2004) EN 301 489-07 V1.2.1 (08-2002) |
| SAR | EN 50360 : 2001 EN 62209-1 : 2006 |
| RADIO | EN 301 511 V9.0.2 (03-2003) |

We hereby declare that [all essential radio test suites have been carried out and that] the above named product is in conformity to all the essential requirements of Directive 1999/5/EC.

The conformity assessment procedure referred to in Article 10 and detailed in Annex [IV] of Directive 1999/5/EC has been followed with the involvement of the following Notified Body (ies):

**BABT, Balfour House, Churchfield Road,
Walton-on-Thames, Surrey, KT12 2TD, UK***
Identification mark: **0168**

The technical documentation kept at :
Samsung Electronics QA Lab.

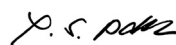
which will be made available upon request.
(Representative in the EU)

Samsung Electronics Euro QA Lab.
Blackbushe Business Park, Saxony Way,
Yateley, Hampshire, GU46 6GG, UK*

2007.12.03

(place and date of issue)

CE 0168



Yong-Sang Park / S. Manager

(name and signature of authorised person)

* It is not the address of Samsung Service Centre. For the address or the phone number of Samsung Service Centre, see the warranty card or contact the retailer where you purchased your phone.