

**OPERATING INSRTRUCTIONS AND PARTS LIST
INSTRUCCIONES DE OPERACIÓN Y LISTA DE PIEZAS**



STONEMATIC

MODELS: **SM-10150**
SM-10200

CONTENTS / CONTENIDO

ENGLISH	2-3
ESPAÑOL	4-5
PARTS LISTS/LISTA DE PIEZAS	6-8
WIRING DIAGRAMS.....	8-9
DIAGRAMA DE CABLADO ELÉCTRICO....	8-9
WARRANTY/GARANTÍA	11

0A7580
Copyright © October, 2001 DBInc.
Printed in U.S.A.



17400 West 119th Street
Olathe, Kansas 66061

Customer Service800-288-5040
Corp. Office913-928-1000
Cust. Service FAX.....800-825-0028
Corp. Office FAX913-438-7951
Internet <http://www.targetblue.com>

ENGLISH



**FAILURE TO COMPLY WITH THESE WARNINGS COULD RESULT
IN SERIOUS BODILY INJURY.**

SAFETY WARNINGS FOR THE OPERATION OF THE SAW

DO

- DO** carefully read and understand all the instructions before operating the saw.
- DO** always keep guards in place.
- DO** always wear safety approved hearing, eye, head and respiratory protection.
- DO** keep all parts of our body away from the blade and all other moving parts.
- DO** inspect the blade, flanges and shafts for damage before installing the blade.
- DO** use only blades marked with maximum operating speed greater than the blade shaft speed.
- DO** use caution and follow the instructions when setting up or transporting the saw.

DO NOT

- DO NOT** allow other persons to be near the saw when cutting.
- DO NOT** use damaged equipment or blades.
- DO NOT** operate the saw if you are uncertain of how to run the machine.
- DO NOT** replace the motor with any motor that does not have a special grounding connection.
- DO NOT** leave the saw unattended while the motor is running.
- DO NOT** operate the saw while under the influence of drugs or alcohol.
- DO NOT** operate the saw in areas of combustible material. Sparks from the saw could cause a fire or an explosion.
- DO NOT** operate the saw without all guards in place.



Symbol Definitions



Read Operating Instructions Before Using Saw

Use in Well Ventilated Area



Do Not Use in Flammable Areas

Machinery Hazard – Keep Hands & Feet Clear



Do Not Operate Without All Guards in Place

Always Wear Approved Equipment

Wear Eye Protection



Wear Hearing Protection

Wear Head Protection



Wear Breathing Protection

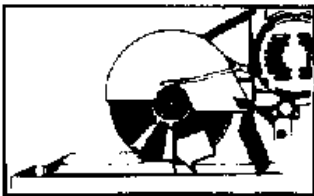
ASSEMBLY of BASIC & DELUXE MODELS

1. Put the stand on the floor and keep the stand from rolling with the floor lock.
2. Place the frame on the stand so that the cutting head support bar is the maximum distance from the end of the stand with the floor lock.
3. Place the pan on the frame and lock the pan in place with the four safety locks.

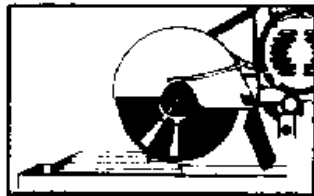


WARNING: Always keep the pan locked in place because an overhanging load could tilt the pan.

4. Place one of the conveyor carts on the rails. ONLY the Deluxe Model includes two carts – the standard large cart and an additional small cart (Saw must have Inner Rail kit) for small tiles.
5. Assemble the cutting head on the saw frame. Be sure the blade will line up with the center of the slot in the conveyor cart. Next, tighten the fasteners so that the cutting head is held securely on the base pivot bar, but can be adjusted up or down.
6. Adjust the cutting head so the blade-cutting rim is through the conveyor top, then tighten the adjustment control knob mounted on the belt guard. When it is necessary to make cuts in the center of the tile, the cutting head may be raised, and operated by hand.



Correct position for a diamond blade. The blade is positioned so that it is at least 1/4" below the top surface of the conveyor cart.



Wrong – The blade is positioned incorrectly in this illustration, as it is above the conveyor cart surface. Setting the blade too shallow may cause it to grab.

Good motor performance depends on proper voltage. Extension cords that are too long and/or small reduce voltage to the motor under load. Use extension cords no smaller than indicated below.

Motor HP	50' Cord		75' Cord		100' Cord	
	115V	230V	115V	230V	115V	230V
1-1/2 & 2	#10	#14	#10	#14	#8	#14

OPERATION

1. Be sure you are using the correct blade for the material. For best results, always use genuine TARGET diamond blades that have been specially developed for ceramic wall tile, quarry tile, marble, granite, slate and many other hard materials.
2. Use a wrench to tighten the flange nut securely, but first make sure the blade flanges are clean. Never use wing nuts, and never merely hand-tighten the hex nut.
3. The water supply should be adequate, with plentiful supply flow of water at all times.



WARNING: Keep water clean and make certain the **WATER LEVEL IS ALWAYS ABOVE THE PUMP INTAKE**. Wet-cut diamond blades must be used with a plentiful flow of water at all times.

4. Keep the V-belt tight for proper power transmission and longer belt life. Do not over tighten. Change V-belts in sets only.
5. Keep the conveyor cart clean and free of cuttings.

The small conveyor cart on the Deluxe Model should be used for tiles up to 12". The standard large conveyor cart is to be used for tiles above 12". The large cart will diagonally cut up to 24" x 24" square tiles or rip 36" tiles. An additional support is furnished which can be mounted to the side of the large cart for supporting oversized materials. The backstop can be lowered if the material overhangs the cart on the operator's end. In addition, an extra support can be mounted on the operator's end of the cart, if required.

Target's Stonematic tile saws feature an exclusive, patented, adjustable tray that is guided to maintain squareness accurately. The adjustable tray permits the operator to adjust the saw to the most convenient and comfortable operating position whether the operator is cutting 4" x 4" or 24" x 24" ceramic tile units.

The stop bar on the water tray will automatically stop the tray when it has reached either the maximum forward or maximum rear position. The adjustable water tray is easily removed from the saw frame for transporting or cleaning.

ESPAÑOL



NO RESPETAR ESTAS ADVERTENCIAS PUEDE TENER RESULTADOS FATALES O GRAVES DAÑOS CORPORALES.

CONSIDERACIONES DE SEGURIDAD PARA EL USO DEL A CORTADORA

HAGA

- Si** Lea cuidadosamente y comprenda todas las instrucciones antes de usar la cortadora.
- Si** Mantenga siempre las protecciones en su lugar.
- Si** Siempre use protecciones de seguridad confirmada para el oído, vista, cabeza y respiración.
- Si** Mantenga todas las partes de su cuerpo alejadas del disco y de otras piezas móviles.
- Si** Verifique que el disco, bridas y eje del siaco no estén dañados antes de instalar el disco.
- Si** Use sólo discos que indiquen una velocidad máxima de operación mayor que la velocidad del eje del disco.
- Si** Tenga cuidado y siga las instrucciones al preparar o transportar la cortadora.

NO HAGA

- NO** permita que otras personas se acerquen al usar la cortadora.
- NO** use equipo o discos dañados.
- NO** deje sola una cortadora funcionando.
- NO** use una cortadora sin estar seguro de cómo utilizarla.
- NO** cambie el motor por otro que no tenga un conector de tierra de protección.
- NO** use la cortadora bajo la influencia de drogas o del alcohol.
- NO** use la cortadora en zonas con material combustible. Chispas de la cortadora pueden provocar un incendio o una explosión.
- NO** use la cortadora si la protección del disco no está en su lugar.



Definiciones de los símbolos



Lea las instrucciones de operación antes de usar la cortadora

Use en lugar bien ventilado



No use en lugares con productos inflamables

Maquinaria peligrosa – Mantenga alejados y manos



No use sin todas las protecciones en su lugar

Siempre use equipamiento aprobado

Use protección visual



Use protección auditiva

Use protección para la cabeza



Use protección respiratoria

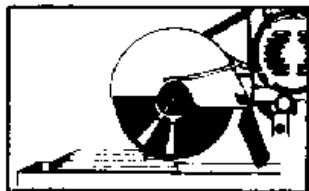
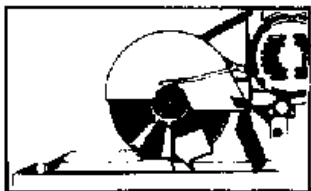
MONTAJE

1. Ponga el soporte de la cortadora en el suelo bloquee el soporte con la traba para evitar que se mueva.
2. Ponga el chasis en el soporte de manera que la barra de fijación del cabezal de corte quede a la mayor distancia posible del extremo del soporte con la traba.
3. Ponga el depósito de agua en el chasis y asegure el depósito con las cuatro trabas de seguridad.



PRECAUCIÓN: Siempre mantenga el depósito con las trabas pues una carga que sobresalga del chasis puede inclinar o volcar el depósito.

4. Ponga uno de los carros de corte en los rieles. La cortadora incluye dos carros – uno para baldosas grandes y el otro para baldosas pequeñas.
5. Monte el cabezal de corte en el chasis de la cortadora. Asegure que el disco esté en línea con el centro de la ranura del carro de corte. Enseguida apriete las tuercas de manera que el cabezal de corte esté sujeto con firmeza en la barra basculante, pero pueda ser ajustado hacia arriba o abajo.
6. Ajuste el cabezal de corte de manera que el borde cortante del disco quede bajo el nivel superior del carro de corte, luego apriete la perilla de ajuste ubicada en el



protector de correa. Cuando sea necesario hacer cortes al centro de una baldosa, se puede levantar el cabezal de corte, y utilizarlo manualmente.

Correcto: esta es la posición del disco diamantado. El disco se coloca de manera que entre por lo menos 1/4" (6mm) bajo el nivel superior del carro de corte.

Incorrecto: en esta figura aparece el disco en una ubicación incorrecta, pues está sobre el nivel del carro de corte. Un disco muy superficial puede atascarse.

Un buen rendimiento del motor depende de un voltaje adecuado. Cables de extensión demasiado largos o de un calibre muy pequeño reducen el voltaje en el motor bajo carga. Use cables de extensión de un calibre no menor al indicado en esta tabla.

Potencia del motor	Cable 50' (15m)		Cable 75' (23m)		Cable 100' (30m)	
	115V	230V	115V	230V	115V	230V
1-1/2 y 2	#10	#14	#10	#14	#8	#14

OPERACIÓN

1. Asegure que se usa el disco adecuado para el material. Para el mejor resultado., siempre use discos diamantados auténticos de TARGET que sean especialmente diseñados para azulejo cerámico mural, bladosa de cantera, mármol, granito, pizarra y muchos otros materiales duros.
2. Use una llave para apretar las tuercas de bridas con firmeza, controlando antes que las bridas de disco estén limpias. Nunca use tuercas de mariposa, y nunca apriete solamente a mano la tuerca hexagonal.
3. El suministro de agua debe ser adecuado, con un caudal abundante en ambos lados del disco.



ADVERTENCIA: Mantenga el agua limpia y asegure que EL NIVEL DEL AGUA ESTÉ SIEMPRE SOBRE LA ENTRADA DE LA BOMBA. Los discos diamantados de corte húmedo deben utilizarse siempre con un flujo abundante de agua.

4. Mantenga tensa la correa V para tener una transmisión adecuada de la fuerza y una máxima duración de la correa. No la apriete demasiado. Cambie las correas V sólo por juegos completos.
5. Mantenga el carro de corte limpio y libre de rebabas.

Se debe utilizar el carro de corte pequeño para baldosas hasta 12" (30 cm). Se utiliza el carro de corte grande en baldosas sobre 12" (30 cm). El carro de corte grande corta en diagonal baldosas cuadradas de 24" x 24" (60x60 cm) o hunde baldosas hasta 36" (90 cm). Se suministra un soporte adicional para montar al costado del carro de corte grande para soportar materiales de gran tamaño. Se puede bajar el tope trasero si el material sobresale del carro al extremo del operario. Además, se puede montar el soporte adicional en el costado del operario, si fuera necesario.

Las cortadoras de baldosa Stonematic de Target tienen un carro de corte ajustable exclusivo, patentado, con guías para mantener una escuadra precisa. El carro ajustable permite al operario ajustar la cortadora a la posición de trabajo más conveniente y cómoda, ya sea para cortar baldosas cerámicas de 4" x 4" (10x10 cm) o 24" x 24" (60x60 cm).

La barra de tope en el depósito de agua detiene automáticamente el carro de corte cuando éste llega a su posición máxima delantera o posterior. El depósito de agua ajustable se desmonta con facilidad del chasis de la cortadora para transporte o limpieza.

DIAGRAM 1 - STONEMATIC™ MODELS: SM-10150, SM-10200

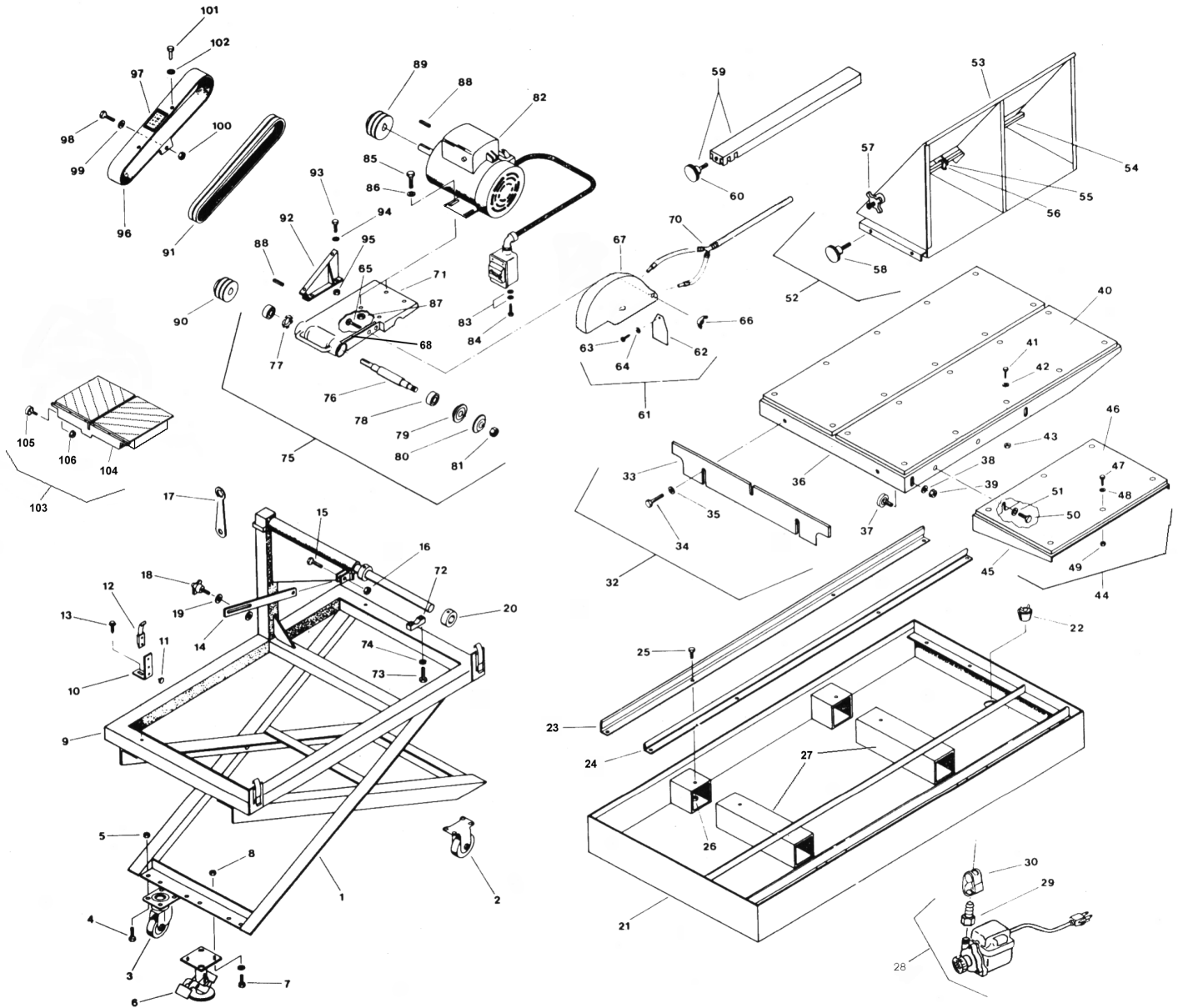
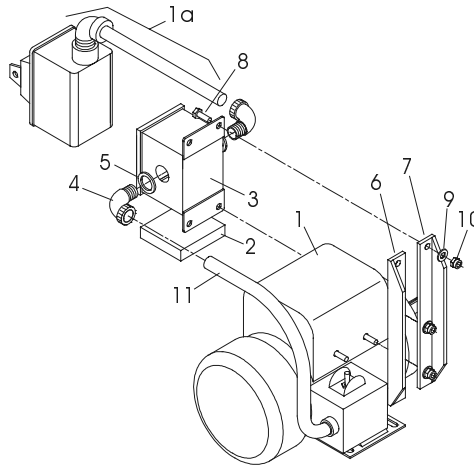


DIAGRAM 1 - PARTS LIST (10/22/01)

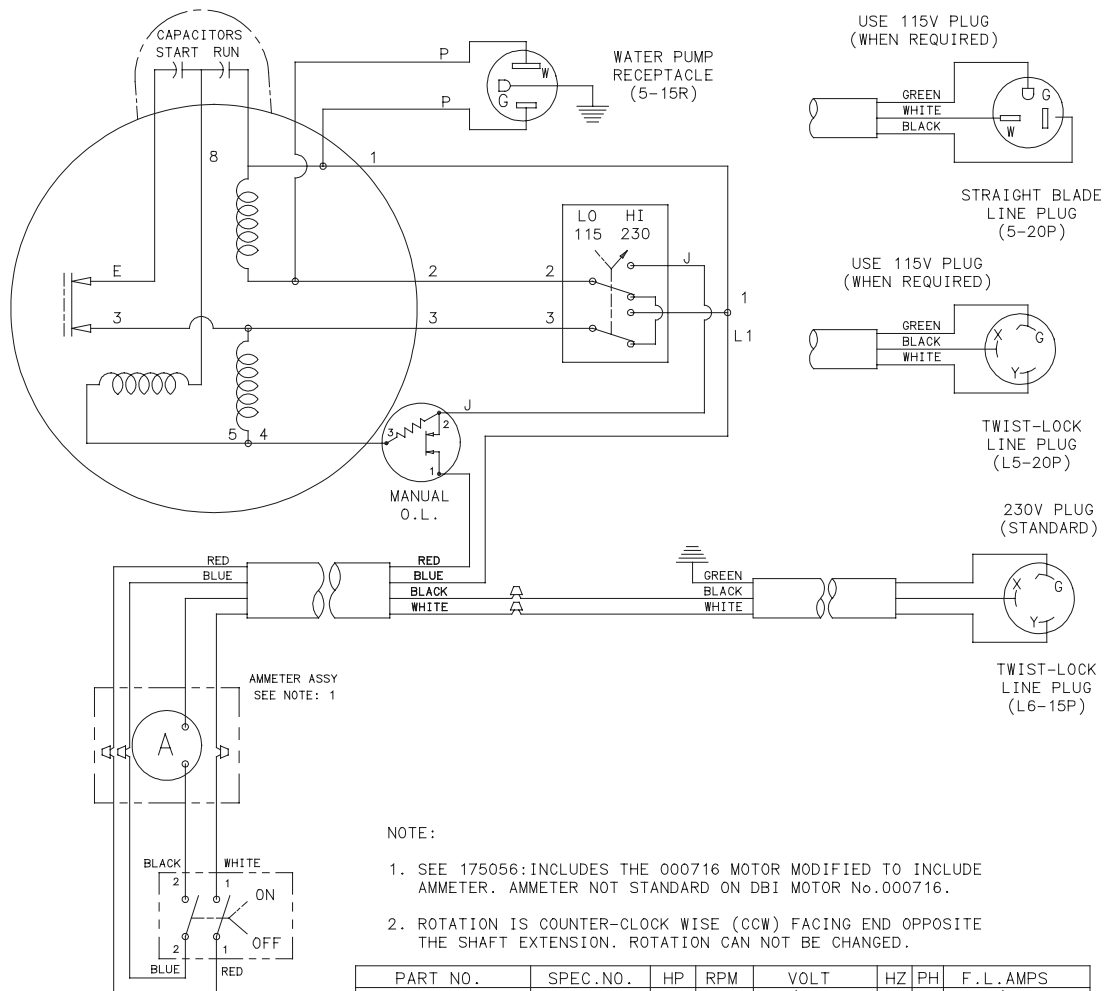
DIAG. LOC.	PART NO.	QTY. REQ.	DESCRIPTION	DIAG. LOC.	PART NO.	QTY. REQ.	DESCRIPTION
1	161634	1	Stand Weldment	59	161693	1	Rip Guide Assembly
2	161671	2	Rigid Castor	60	020323	1	Capscrew, Hex Hd. 3/8"-16 x 1"
3	161670	2	Swivel Castor	61	169580	1	Blade Guard Assy 10" (Incl. 23-31, 82)
4	021416	16	Capscrew, Hex Hd, 5/16"-18 x 1"	62	169365	1	Guard, Splash
5	020197	16	Locknut, Fiber, 5/16"-18	63	169366	1	Screw, Pan Hd, Self-Tapping, #8 x 3/8"
6	161687	4	Floor Lock	64	020739	1	Washer, Flat #10
7	048740	4	Capscrew, Hex Hd, 3/8"-16x1-1/4"	65	020126	1	Bolt, Carriage, 5/16"-18 x 1-3/4"
8	020199	4	Locknut, Fiber, 3/8"-16	66	020245	1	Locknut, Wing, 5/16"-18
9	161600	1	Frame Weldment	67	169532	1	Blade Guard, 10"
10	161658	2	Pan Stop Assy (Incl.11-12)	68	163248	1	Rubber Strip, Sponge
11	051065	4	Plastic Tabs	69	---	--	-----
12	197044	4	Latch	70	169564	1	Water Tube Assy, 1/4"Y x 72"
13	020489	2	Screw, Hex Hd, Self-Tapping 1/4"-20x3/4"	71	171032	1	Motor Base
14	161632	1	Lock Bar	72	189661	2	Bearing Cap
15	020373	1	Capscrew, Hex Hd, 5/16"-18 x 1-1/2"	73	020785	4	Lockwasher, Split, 5/16"
16	020197	1	Locknut, Fiber, 5/16"-18	74	020441	4	Capscrew, 5/16"-18 x 1-3/4"
17	161641	1	Wrench, Blade Shaft 15/16" x 9/16" Box	75	052004	1	Blade Shaft Assy (Incl. 58-63)
18	169486	1	Hand Knob, 5/16"-18 x 1"	76	052006	1	Shaft, Blade
19	020763	1	Washer, Flat, SAE 5/16"	77	071110	1	Washer, Spring
20	043260	2	Set Collar	78	071081	2	Bearing, Blade Shaft
21	161661	1	Pan	79	169522	1	Flange, Inner
22	030386	1	Drain Plug	80	169523	1	Flange, Outer
23	161624	2	Rail, Large Outer	81	020176	1	Nut, Thin Hex, 5/8"-18
24	161626	2	Rail, Small Inner (Optional)	82	000605	1	Motor & Switch Assy, 1.5 HP, 115V-230/60/1
25	020301	16	Capscrew, Hex Hd, .25-20 x 5/8"	--	175056	1	Motor & Switch Assy, 2 HP, 115-230V/60/1
26	020195	16	Locknut, Fiber 1/4"-20	--	161706	1	(000716 Modified w/ Ammeter Assy)
27	169635	2	Support, Inner Rail (Optional)	--			Motor & Switch Assy, 2 HP
28	161316	1	Water Pump Assembly, 115V/60/1				240/50/1 (000607 w/ Decals)
--	050216	1	Water Pump Assembly, 230V/50/1	83	020741	4	Washer, Flat, 1/4"
29	197237	1	Hose Barb 1/4" NPT x 1/4" OD	84	020489	2	Screw, Hex Washer Hd, 1/4"-20 x 3/4"
30	161134	1	Valve, Flow Control	85	021416	4	Capscrew, Hex Hd, 5/16"-18 x 1"
31	----	--	-----	86	020742	4	Washer, Flat, 5/16"
32	161663	1	Conveyor Cart Assy (Incl. 33-43)	87	020197	4	Locknut, Fiber, 5/16"-18
33	161751	1	Back Stop	88	020060	2	Key, 3/16" Sq. x 1"
34	048740	2	Capscrew, Hex Hd, 3/8"-16x1-1/4"	89	030906	1	Pulley, 2G3V2.25 - .875 w/SS
35	020743	2	Washer, Flat, 3/8"				(For 1-1/2HP & 2HP)
36	161662	1	Cart Weldment	90	161696	1	Pulley, Blade Shaft 2G3V2.00 - .625 w/SS
37	030822	4	Wheel, Cart				(For 1-1/2 HP & 2 HP)
38	020763	4	Washer, Flat, SAE 5/16"	91	058020	2	V-Belt, 3VX280
39	032366	4	Nut, KEPS, 5/16"-18	92	169499	1	Mounting Bracket, Belt Guard
40	161622	2	Cutting Board, Cart	93	020370	4	Capscrew, 1/4"-20 x 3/4"
41	020411	12	Machine Screw, Hex Hd, #10-24 x 3/4"	94	020262	4	Washer, Flat, 1/4"
42	020739	12	Washer, Flat #10	95	020195	4	Locknut, Fiber, 1/4"-20
43	020194	12	Locknut, Fiber, #10-24	--	169581	1	Belt Guard Assy (Incl. 96-102)
44	161666	1	Extension Cart Assembly	96	051131	1	Belt Guard
45	161667	1	Extension Cart Weldment	97	169343	1	Decal: Warning/Caution
46	161623	1	Cutting Board, Ext.	98	021416	1	Capscrew, Hex Hd, 5/16"-18 x 1"
47	020411	4	Machine Screw, Hex Hd, #10-24 x 3/4"	99	020763	1	Washer, Flat, SAE, 5/16"
48	020739	4	Washer, Flat #10	100	020197	1	Locknut, Fiber, 5/16"-18
49	020194	4	Locknut, Fiber, #10-24	101	021423	2	Capscrew, Hex Hd, 1/4"-20 x 1/2"
50	020323	2	Capscrew, Hex Hd, 3/8"-16 x 1"	102	020762	2	Washer, Flat, 1/4"
51	020743	2	Washer, Flat, 3/8"	103	169573	1	Cart Assy, Conveyor (Incl. 104-106)
52	161707	1	Miter Guide Assy. (Incl. 53-58)				in Optional Deluxe Package
53	161650	1	Mitre Guide Weldment	104	169576	1	Cart, Conveyor w/ V-Top
54	161655	1	Locking Bolt	--	030049	1	Wheels-Set of 4 (Incl. Items 105 & 106)
55	050106	1	Spring	105	032366	4	Nut, KEPS, 5/16"-18
56	050105	1	Stop	106	030822	4	Wheel, Cart
57	050103	1	Knob, Metal				
58	161043	2	Knob				

**DIAGRAM 2 – SM-10200 2 HP
with Ammeter**

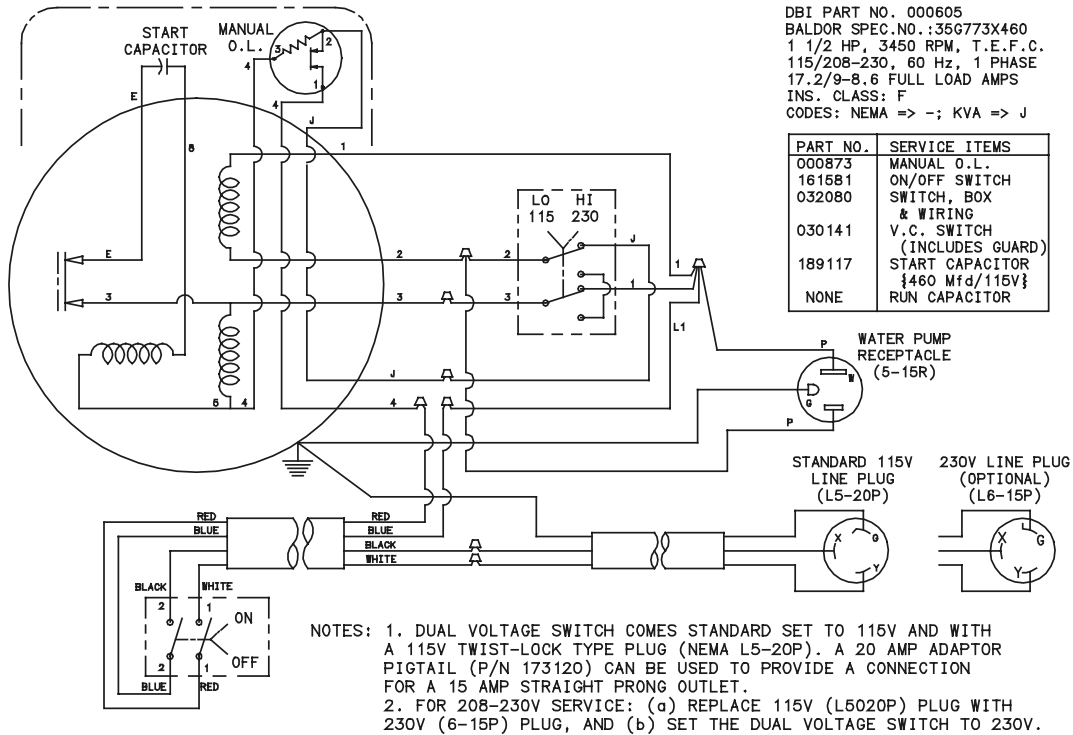


DIAG. LOC.	PART NO.	QTY. REQ.	DESCRIPTION	DIAG. LOC.	PART NO.	QTY. REQ.	DESCRIPTION
--	175056	1	2 HP Motor-Ammeter (Incls 1-11)	6	175086	1	Mounting Bar, L.H.
1	000716	1	2 HP Motor & Switch 115/230V/60/1	7	175087	1	Mounting Bar, R.H.
1a		1	Switch Assy – ONLY	8	020370	6	Capscrew, 1/4"-20 x 3/4"
2	175085	1	Mounting Pad – Foam Rubber	9	020742	6	Washer, Flat 1/4"
3	175079	1	Ammeter & Enclosure	10	020195	6	Locknut, Fiber, 1/4"-20
4	030072	2	Connector Fitting, 90°	11	020998	2 ft	14-3 SO Cord
5	175244	2	Locknut, 1/2" Conduit				

WIRING DIAGRAM SM-10200 with Ammeter

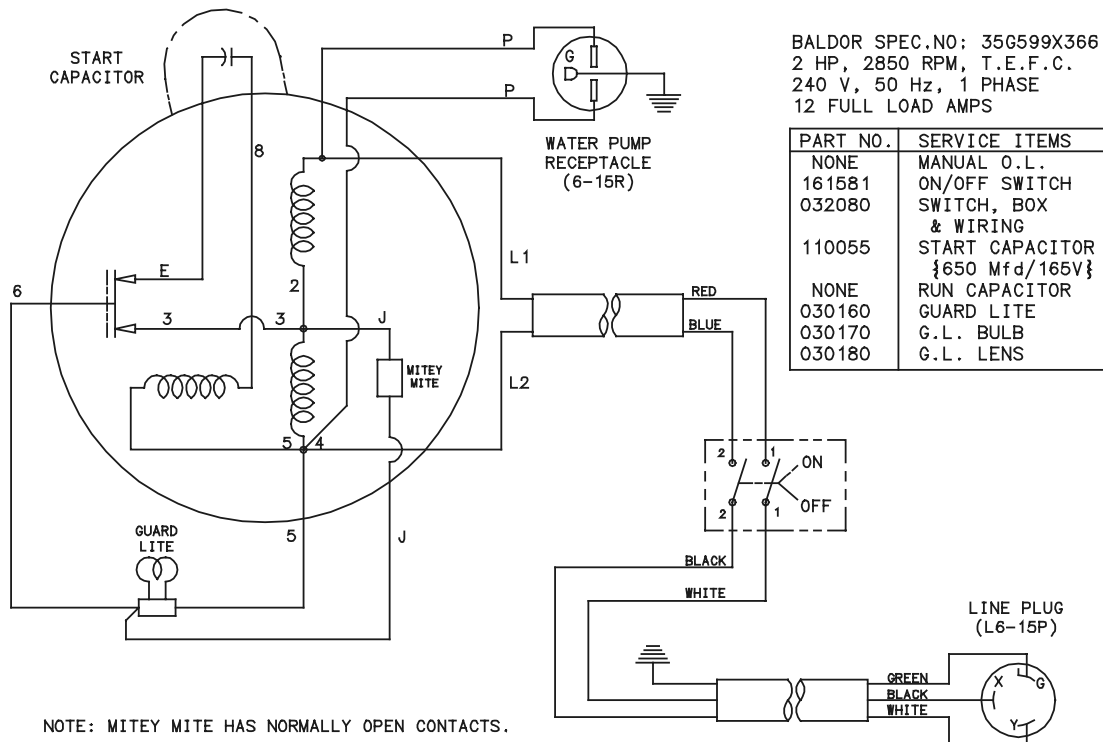


WIRING DIAGRAM SM-10150 (P/N 000605)



PART NO.	SPEC.NO.	HP	RPM	VOLT	HZ	PH	F. L. AMPS
000605 (161702)	35G773X460	1.5	3450	115/208-230	60	1	17.2/9-8.6

WIRING DIAGRAM SM-10200 (P/N 000607)



PART NO.	SPEC.NO.	HP	RPM	VOLT	HZ	PH	F. L. AMPS
000607 (161703)	35G599X366	2	2850	240	50	1	12

NOTES:

Target's New Equipment Warranty

Except as noted below. Target warrants that its new equipment will be free from manufacturing defects for a period of two (2) years from date of purchase by the original consumer purchaser.

The above warranty is subject to the following new equipment exceptions:

- The warranty time period for the following new equipment is limited as follows:
 - Gas-powered Quickie® Super & Turbo Saws – Three (3) months
 - Blue Gator™ Diamond Chain Saws – Three (3) months
 - Multi-flow Hydraulic Power Pak – Three (3) months
 - DM100 Hand Drill – Six (6) months
 - Electric-powered Quickie® Super Saw & TruCore Drill Rigs – One (1) year
- To the extent the following components are part of any the new equipment, Target's warranty on the component parts is limited to the manufacturer's warranty period set out below:

Manufacturer.....Warranty Period	Manufacturer.....Warranty Period	Manufacturer.....Warranty Period
GAS and DIESEL ENGINES	ELECTRIC & HYDR. MOTORS	TRANSMISSIONS
Briggs & Stratton.....2 years	Baldor.....1 year	Eaton.....3 years*
Koler Gas.....2 years	Leeson.....1 year	Sunstrand.....3 yrs./1,000 hrs.*
Robin Gas..... 2 years	Bosch.....6 months	(* from date of manufacture)
Honda Gas.....2 years	Milwaukee.....Lifetime	HYDRAULIC PUMPS
Wisconsin Gas.....1 year	DeWalt.....1 year	Fenner-Stone.....1 year
Hatz Diesel.....1 year	Eibenstock.....6 months	John S. Barnes Co.....1 year
Continental.....2 years	Lincoln.....1 year	WATER PUMPS
Briggs & Stratton	DTI Hydr Motor.....1 year	Jasbsco.....1 year
Vanguard Engine.....2 years	AIR MOTORS and VAC. PUMPS	Beckett.....1 year
Briggs & Stratton	Gast.....1 year	Teal (Blue Gator™).....1 year
8 HP Engine.....60 days		
Deutz Diesel.....1 year		

3. Target's obligation under this warranty is expressly limited to the replacement or repair at Target, Olathe, KS 66061, or at a service facility designated by Target, of such parts as inspection shall disclose to have been defective. This warranty does not cover labor, except for gas powered Quickie Super saws and does not cover maintenance items such as belts, air filters, bearings and wheels. Purchaser will be responsible for paying for shipping costs to and from the location where the equipment is to be repaired or replaced. Motors and engines are to be serviced by the nearest factory authorized service center. These service centers are designated by the manufacturer of the engine/motor. **Under no circumstances will Target be responsible for incidental or consequential damages.**

4. Target's warranty does not apply to defects caused by damage, abuse, modifications, low voltage, acts of God, unreasonable use, faulty repairs made by others or defects caused by failure to provide reasonable maintenance. All warranties are void if the equipment or any of its components are altered or modified by the purchaser, or of the product is used in a manner or with a blade not recommended by the manufacturer.

5. The forgoing express warranties are in lieu of all other warranties. **TARGET EXPRESSLY DISCLAIMS ALL OTHER WARRANTIES, INCLUDING, WITHOUT LIMITATION, THE IMPLIED WARRANTIES OF MERCHANTABILITY AND FITNESS FOR A PARTICULAR PURPOSE.**

Please record the Date of Purchase and the Serial Number of your saw in the space below. (The serial number is located on the side of the motor.) When ordering service items, please have this information available.

Serial Number:		Date of Purchase:	
Model Number:		Where Purchased:	

Target Corporate Office

Customer Service 800-288-5040
Corp. Office 913-928-1000
Cust. Service FAX 800-825-0028
Corp. Office FAX 913-438-7951
Cust. Service, Int'l. 913-928-1300
Int'l. E-mail rcoats@db-inc.com

**Target Latin America, Mexico, Caribbean,
Central and South America**

17400 West 119th Street
Olathe, Kansas 66061
Phone 913-928-1255
FAX 913-438-7938
E-mail hleon@db-inc.com

Target Canada

17400 West 119th Street
Olathe, Kansas 66061
Customer Service 800-288-5040
E-mail rbaker@db-inc.com

Target Hong Kong, China

Diamant Boart Pte Ltd.
Unit E, 13/F., Infotech Centre,
21 Hung To Road, Kwun Tong,
Hong Kong
Phone 852-2516-6602
FAX 852-2516-6605
E-mail targethk.netvigator.com

Target Japan, Korea, Taiwan

1803-36 Oyama-Machi
Machida-Shi, Tokyo 194-0212
Japan
Phone 8142-797-0212
FAX 8142-798-7515
E-mail fwnh9794@mb.infoweb.ne.jp

Target Australia, New Zealand/Dembicon Pty. Ltd

29 Kinkaid Avenue
North Plympton, Adelaide SA 5037
Australia
Phone 61-83751000
FAX 61-83710990
E-mail enquiries@dembicon.com.au
Internet www.dembicon.com.au

Target Brazil

Pix Do Brasil
Rua José de Oliveira Coutinho
São Paulo, Brazil CEP 01144-020
Phone 55 11 3611-8383
FAX 55 11 3619-3022
E-mail pixbrasil@uol.com.br



**Target Singapore, Thailand, Vietnam,
Malaysia, Indonesia**

Phone 65-9628-6175
FAX 65-234-2896
e-mail reeh@singnet.com.sg

European Headquarters

DB Construction Business Group
Avenue Du Pont De Luttre, 74
1190 Brussels, Belgium
Phone (32-2) 348-3669
FAX (32-2) 348-3136
Internet www.diamant-boart.com

Target Internet www.targetblue.com

 **WARNING** 
The engine exhaust from this product contains chemicals known to the State of California to cause cancer, birth defects or other reproductive harm.

