



Shoreside™ Stainless Steel 2-Burner Propane Grill Use, Care & Assembly Manual With Lighting Instructions

Model 9971 Series

ASSEMBLER/INSTALLER:

Leave these instructions with the consumer.

CONSUMER/USER:

Read all instructions and keep in a safe place for future reference.



**INSTASTART™
Electronic Ignition**

Propane cylinder not included.

IMPORTANT

CONSUMER/USER: This instruction manual contains important information necessary for the proper assembly and safe use of the appliance. Read and follow all warnings and instructions before assembling and using the appliance. Follow all warnings and instructions when using the appliance. Keep this manual for future reference.

If you have questions about assembly, operation, servicing or repair of these grills, please call Coleman at 1-800-835-3278 or TDD: 316-832-8707. In Canada call 1-800-387-6161.

For Outdoor Use Only

www.coleman.com

Contents

Technical Characteristics	2
General Safety Information	2
Portable L.P. Gas Barbecue Cylinders	4
Maintenance	5
Grill Assembly	5
Leak Check	8
Operation	9
To Light – Electronic Ignition	9
To Adjust Igniter	10
To Light – Match Light	10
To Turn Off	11
To Clean	11
Accessory Griddle	12
Cleaning the Griddle	12
Storing the Griddle	12
To Store Grill	13
Cooking Tips	13
Trouble Shooting Guide	14
Replacement Parts List	15
Accessories List	15
Warranty	16

Technical Characteristics

Input: 10,000 BTU/H

Category: Pressure regulated propane

Fuel: 16.4 oz. disposable propane cylinders

Regulator: 9971

General Safety Information

This manual contains important information about the assembly, operation and maintenance of this product and system. General safety information is presented in these first few pages and is also located throughout the manual. Particular attention should be paid to information accompanied by the safety alert symbols: “**▲ DANGER**”, “**▲ WARNING**”, “**▲ CAUTION**”.

Keep this manual for future reference and to educate new users of this product. This manual should be read in conjunction with the labeling on the product.

Safety precautions are essential when any mechanical or propane fueled equipment is involved. These precautions are necessary when using, storing, and servicing. Using this equipment with the respect and caution demanded will reduce the possibilities of personal injury or property damage.

The following symbols shown below are used extensively throughout this manual. Always heed these precautions, as they are essential when using any mechanical or fueled equipment.

▲ DANGER

DANGER indicates an imminently hazardous situation which, if not avoided, will result in death or serious injury.

▲ WARNING

WARNING indicates a potentially hazardous situation which, if not avoided, could result in death or serious injury.

▲ CAUTION

CAUTION indicates a potentially hazardous situation which, if not avoided, may result in minor or moderate personal injury, or property damage.

▲ DANGER

If you smell gas:

- 1. Shut off gas to the appliance.**
- 2. Extinguish any open flame.**
- 3. Open lid.**
- 4. If odor continues, keep away from the appliance and immediately call your gas supplier or your fire department.**

Failure to follow these instructions could result in fire or explosion which could cause property damage, personal injury or death.

▲ DANGER

- 1. Never operate this appliance unattended.**
- 2. Never operate this appliance within 10 feet (3.05 m) of any other gas cylinder.**
- 3. Never operate this appliance within 25 feet (7.5 m) of any flammable liquid.**
- 4. Heated liquids remain at scalding temperatures long after the cooking process. Never touch cooking appliance until liquids have cooled to 115°F (45°C) or less.**
- 5. If a fire should occur, keep away from the appliance and immediately call your fire department. Do not attempt to extinguish an oil or grease fire with water.**

Failure to follow these instructions could result in fire, explosion or burn hazard, which could cause property damage, personal injury or death.

Only persons who can understand and follow the instructions should use or service this outdoor grill.

If you need assistance or outdoor grill information such as an instruction manual or labels, contact The Coleman Company, Inc.

DANGER



CARBON MONOXIDE HAZARD

- **This appliance can produce carbon monoxide which has no odor.**
- **Using it in an enclosed space can kill you.**
- **Never use this appliance in an enclosed space such as a camper, tent, car or home.**

CAUTION

- The use of alcohol, prescription or non-prescription drugs may impair your ability to properly assemble or safely operate the appliance.
- When cooking with oil or grease, always have a Type BC or ABC fire extinguisher readily available. In the event of an oil or grease fire, do not attempt to extinguish with water. Immediately call the fire department. A Type BC or ABC fire extinguisher may, in some circumstances, contain the fire.
- When cooking, the appliance must be on a level, stable surface in an area clear of combustible material. An asphalt surface (blacktop) may not be acceptable for this purpose.
- Do not leave the appliance unattended. Keep children and pets away from the appliance at all times.
- Do not move the appliance when in use.
- This appliance is not intended for and should never be used as a heater.

DANGER



• EXPLOSION - FIRE HAZARD

- Never store propane near high heat, open flames, pilot lights, direct sunlight, other ignition sources or where temperatures exceed 120 degrees F (49°C).
- Propane gas is heavier than air and leaking propane will sink to the lowest level possible. It can ignite by ignition sources including matches, lighters, sparks or open flames of any kind many feet away from the original leak. If you smell gas, leave the area immediately.
- Never install or remove propane tank while outdoor grill is lighted, near flame, pilot lights, other ignition sources or while outdoor grill is hot to touch.
- During operation, this product can be a source of ignition. Never use the grill in spaces that contain or may contain volatile or airborne combustibles, or products such as gasoline, solvents, paint thinner, dust particles or unknown chemicals. Minimum distance from sides and back of unit to walls or railings is 12 inches (30.5 cm). Do not use under overhead unprotected combustible construction.
- Provide adequate clearances around air openings into the combustion chamber.
- DO NOT use gas grill indoors or in garages, breezeways, sheds or enclosed areas.
- Do not obstruct the flow of combustion and ventilation air.

WARNING

We cannot foresee every use which may be made of our products. **Check with your local fire safety authority if you have questions about use.**

Other standards govern the use of fuel gases and heat producing products for specific uses. Your local authorities can advise you about these.

- Never refill disposable cylinders.
- Use the preset regulator that came with the grill. Do not attempt to adjust.
- The installation and use must conform with local codes or, in absence of local codes, with the *National Fuel Gas Code, ANSI Z223.1/NFPA 54, Storage and Handling of Liquefied Petroleum Gases, ANSI/NFPA 58 or CSA B149.1, Natural Gas and Propane Installation Code.*
- This appliance is not intended to be installed in or on recreational vehicles or boats.
- This appliance is not intended for commercial use.

DANGER



• CARBON MONOXIDE HAZARD

- This grill is a combustion appliance. All combustion appliances produce carbon monoxide (CO) during the combustion process. This product is designed to produce extremely minute, non-hazardous amounts of CO if used and maintained in accordance with all warnings and instructions. Do not block air flow into or out of the grill.
- Carbon Monoxide (CO) poisoning produces flu-like symptoms, watery eyes, headaches, dizziness, fatigue and possibly death. You can't see it and you can't smell it. It's an invisible killer. If these symptoms are present during operation of this product **get fresh air immediately!**
- **For outdoor use only. If stored indoors, detach cylinder outdoors.**
- **Never use inside house, camper, tent, vehicle or other unventilated or enclosed areas. This grill consumes air (oxygen). Do not use in unventilated or enclosed areas to avoid endangering your life.**

WARNING

- This product is fueled by propane gas. Propane gas is invisible, odorless, and flammable. An odorant is normally added to help detect leaks and can be described as a "rotten egg" smell. The odorant can fade over time so leaking gas is not always detectable by smell alone.
- Use only propane gas set up for vapor withdrawal.
- Propane gas should be stored or used in compliance with local ordinances and codes or with ANSI/NFPA 58 and with the American Boat and Yacht Council (ABYC) Standards A-1 (9), Marine Liquefied Petroleum gas (LPG) Systems.
- Turn off propane and disconnect cylinder when not in use.
- Cylinders must be stored out of reach of children.

CALIFORNIA PROPOSITION 65:

WARNING: This fuel, and byproducts of combustion of this fuel, contain chemicals known to the state of California to cause cancer, birth defects, or other reproductive harm.

WARNING



• BURN HAZARD

- Never leave grill unattended when hot or in use.
- Keep out of reach of children.

CAUTION

• SERVICE SAFETY

- Keep all connections and fittings clean. Inspect propane cylinder and grill propane connections for damage before attaching.
- During set up, check all connections and fittings for leaks using soapy water. Never use a flame. Bubbles indicate a leak. Check that the connection is not cross-threaded and that it is tight. Perform another leak check. If there is still a leak, remove the cylinder and contact Coleman for service or repairs.
- Use as a cooking appliance only. Never alter in any way or use with any device or part not expressly approved by Coleman.
- Clean grill frequently to avoid grease accumulation and possible grease fires.

Portable L.P. Gas Barbecue Cylinders

Liquefied Petroleum Gas (abbreviated L.P. gas or propane) is highly flammable. It becomes liquid when stored under high pressure inside a cylinder and vaporizes when released. L.P. gas is heavier than air and tends to collect in low areas. It is important that there are no leaking connections on your gas grill that could cause a fire or explosion (see the section titled "LEAK CHECK").

WARNING

Your new grill is only to be operated with 16.4 oz. disposable propane gas cylinders. **DO NOT** attempt to attach any other type of L.P. gas connections or natural gas connections.

Maintenance

WARNING

- Do not overheat grill. Stainless steel loses anti-corrosive characteristics when subjected to extreme heat.

- **About stainless steel** - Stainless steel exposed to prolonged periods of high heat will change color and texture. Coleman grills require little preheating. Texture and color change is normal on interior components and will not affect the operation or performance of the product.
- **Cleaning** - Clean the exterior surface after every use. Use soapy water with a soft cloth or sponge. Rinse thoroughly with fresh water and dry. We recommend covering the grill between uses. Optional covers are available from Coleman retailers or direct from Coleman.
CAUTION: Abrasive pads or cleaners will damage the finish.

- **Interior components** - Remove heavy residue from grill and empty grease tray between each use. We recommend cleaning all accessible surfaces, and all removable components, at least once a year, depending on amount of use, and always prior to long term storage.
- **Grill grates** - Clean with brass wire brush while grill is warm. Wash with soapy water and dry prior to storage.
- **Ceramic electrode** - Located just beside the burner, it should be kept clean of grease and debris. Be careful not to damage the ceramic insulator or bend the wire. See page 10 for proper electrode spark adjustment.
- **Regulator control valve** - Do not attempt to disassemble the valve in any way. Call Coleman if you suspect it's not adjusting the fuel flow properly. Clean valve with a clean cloth and remove any debris obstructing the gas outlet orifice.

Grill Assembly

Remove components from carton and check the the following list to make sure all parts are accounted for before proceeding.



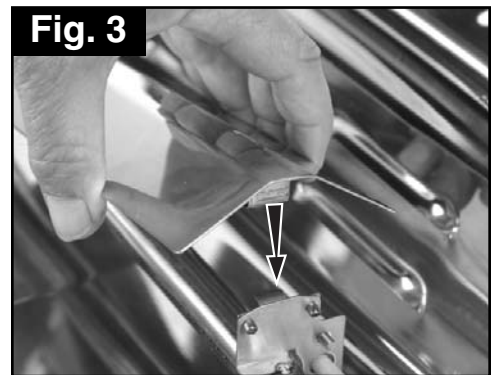
- | | |
|----------------|-------------------|
| 1. Grill | 4. Heat Tents (2) |
| 2. Regulator | 5. Grease Tray |
| 3. Grill Grate | |

See page 15 for
Replacement Parts List
and ordering instructions.

Grill Assembly

IMPORTANT: Remove all protective plastic film from stainless steel parts and any packing materials from grill prior to assembly/use. This film or packing materials are installed at the factory to prevent damage that could occur during shipment and handling.

1. Install drip tray below front of grill. (Fig. 1).
2. Insert tab on heat tent into slot in back bracket of grill. (Fig. 2)
3. Insert tab on bottom right side of heat shield to lock into slot on grill bracket.(Fig. 3)
4. Install the remaining heat shield as shown (Fig. 4).



Grill Assembly continued

5. Slip center notch on grate over tab on inside of grill. (Fig. 5)
6. Push down on left side of grate to lock into tab on left side of grill. (Fig. 6)
7. Turn regulator valve knob to OFF. (Fig. 7)
8. Push regulator onto fitting on right side of grill and turn fitting clockwise until hand tight. (Fig. 8)



Grill Assembly continued

9. Remove plastic cap from top of propane bottle and turn propane cylinder clockwise into regulator until hand tight. (Fig. 9 & 10)
10. Never operate grill with propane cylinder in an inverted position. (Fig. 11)



Leak Check

WARNING

- Perform leak test outdoors.
- Extinguish all open flames.
- NEVER leak test when smoking.
- Do not use the outdoor grill until connection has been leak tested and does not leak.

Note: Use Coleman 16.4 oz. disposable propane cylinders. The LP-gas supply cylinder to be used must be constructed and marked in accordance with the specifications for LP-gas cylinders of the U.S. Department of Transportation (DOT) or the National Standard of Canada, *CAN/CSA B339, Cylinders, Spheres and Tubes for the Transportation of Dangerous Goods*.

Operation

DANGER



• CARBON MONOXIDE HAZARD

- For outdoor use only.
- Never use inside house, camper, tent, vehicle or other unventilated or enclosed areas. This grill consumes air (oxygen). Do not use in unventilated or enclosed areas to avoid endangering your life.

DANGER



• EXPLOSION - FIRE HAZARD

- Propane is heavier than air and can accumulate in low places. If you smell gas, leave the area immediately.
- Always attach or detach propane source outdoors; never while grill is lighted, near flame, pilot lights, other ignition sources or while grill is hot to touch.
- This grill is very hot during use and can ignite flammables too close to the burners. Minimum distance from sides and back of unit to walls or railings is 12 inches (30.5 cm). Do not use under overhead unprotected combustible construction. Keep gasoline and other flammable liquids and vapors well away from grill.

CAUTION

• DO NOT OVERHEAT GRILL

- Stainless steel loses anti-corrosive characteristics when subjected to extreme heat causing damage and discoloration.

CAUTION

- Never leave grill unattended when hot or in use.
- Keep out of reach of children.

CAUTION

- A common mistake is to use too high a heat setting. Grill will continue to become hotter as you cook.
- Excessive flare-ups may occur if the grill is too hot. If grill becomes too hot, spray fresh water on flare-ups until cool.
- Use medium heat and be patient.

- Do not attempt to operate this grill until you have read and understood all General Safety Information in this manual and all assembly is complete and leak checks have been performed.
- Never ignite grill with lid closed.

To Light

WARNING



• BURN HAZARD

- This appliance will be hot during and after use. Use insulated oven mitts or gloves for protection from hot surfaces or splatter from cooking liquids.
- Never leave grill unattended when hot or in use.
- Keep out of reach of children.

INSTASTART™ Electronic Ignition Grills

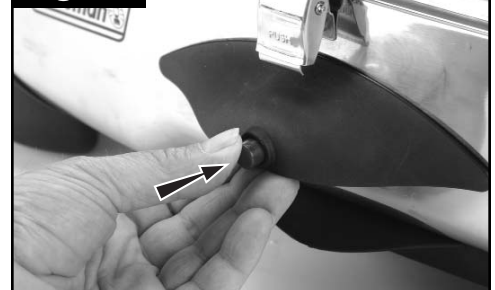
1. Set on sturdy, flat surface. **For outdoor use only.**
2. Open regulator valve and push igniter button repeatedly until burner lights. (Fig. 12 and 13)

Note: If igniter fails to light grill, use match to light burner (See page 10). If the grill is wet the igniter may not spark.

Fig. 12



Fig. 13



To Light continued

INSTASTART™ Electronic Ignition Grills (continued)

3. If igniter still fails to light grill, use match to light burner or check for proper gap between igniter wire and burner tube. (See Fig. 15)
4. Adjust flame with regulator valve. (Fig. 14)

Fig. 14

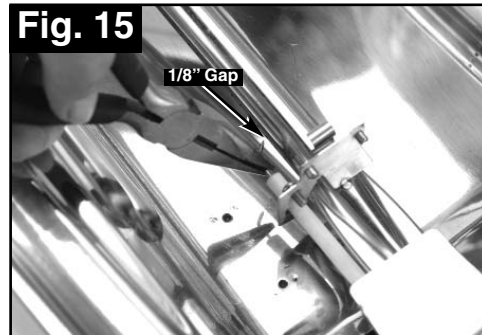


To Adjust Igniter

NOTE: A gap of 1/8" should be maintained between the end of the wire on the electrode and the burner tube for proper ignition spark. (Fig. 15)

1. Set on sturdy, flat surface.
2. Grasp end of wire with a needle nose pliers and carefully bend to adjust to proper spacing from burner tube (Fig. 15). **Be careful to not break or crack the ceramic insulator.**

Fig. 15



To Light

To Match Light

CAUTION

Use a long wooden match or a match extension

1. Set on sturdy, flat surface. **For outdoor use only.**
2. Hold a lighted match near the burner, then turn regulator knob and rotate clockwise. (Fig. 16)
3. Adjust flame with control valve. (Fig. 17)

Fig. 16



Fig. 17

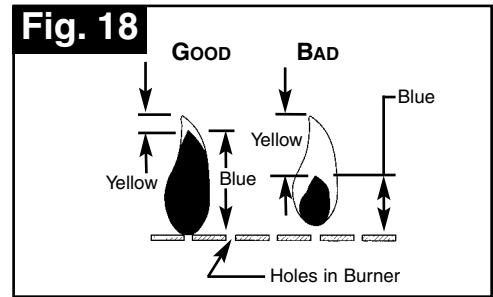


To Light continued

To Match Light (continued)

4. A good flame should be blue with minimal yellow tip. Some yellow tips on flames are acceptable as long as no carbon or soot deposits appear. (Fig. 18)

NOTE: If the burner flame is accidentally extinguished, turn off the control valve and wait 5 minutes before relighting the appliance.



To Turn Off

1. Turn regulator valve to OFF. (Fig. 19)



To Clean

1. Make sure grill is cool.
2. Always detach the propane cylinder outdoors, away from flame (including pilot lights) and other ignition sources.
3. Detach the propane cylinder from the regulator and replace the plastic protective cap onto the cylinder threads. (Fig. 20)
4. Remove regulator from grill by turning fitting counterclockwise. (Fig. 21)



To Clean continued

5. Optional Griddle has a non-stick coating. Use only nonmetallic utensils to prolong life of non-stick coating.
6. To reduce sticking and improve clean-up, spray cooking surface with vegetable oil prior to lighting grill.
7. Wipe clean with soft cloth and mild dish detergent. Do not use abrasives. (Fig. 22)
8. Grill and drip tray are dishwasher safe. (Fig. 23)



Accessory Griddle (sold separately)

1. Place the griddle on top of the grate. The tabs on the bottom side of the griddle must engage the grate. (Fig. 24)
2. When using the griddle, always extend the griddle handles and keep the grill lid open.

NOTES TO PREVENT DAMAGE WHICH WILL VOID THE WARRANTY:

- Do not use pots, pans, ovens, etc., on this griddle surface.
- Do not use this griddle on a campfire or other open fire.
- Use this griddle only on the Coleman® grill for which it was designed.

Cleaning the Griddle

- Make sure grill and griddle are cool.
- Wipe clean with soft cloth and mild dish detergent. Do not use abrasives on the non-stick griddle surface.

Storing the Griddle

- To protect the non-stick surface, place the griddle into the accessory Padded Grill Case (sold separately).



To Store Grill

⚠ DANGER



• EXPLOSION - FIRE HAZARD

- Never store propane near high heat, open flames, pilot lights, direct sunlight, other ignition sources or where temperatures exceed 120 degrees F (49°C).
- The cylinder must be disconnected when the grill is in storage.
- Do not store a spare LP-gas cylinder under or near this appliance. Failure to follow the above instructions exactly may result in fire causing death or serious injury.

1. For storage or transport, regulator may be located below grate. (Fig. 25 & Fig. 26)
2. Make sure lid is latched and carry grill with handle as shown. (Fig. 27 & 28)
3. Always store grill in a clean, dry location.



Cooking Tips

⚠ CAUTION

DO NOT operate appliance with a pot or pan on grill surface. Damage will occur and void the warranty.

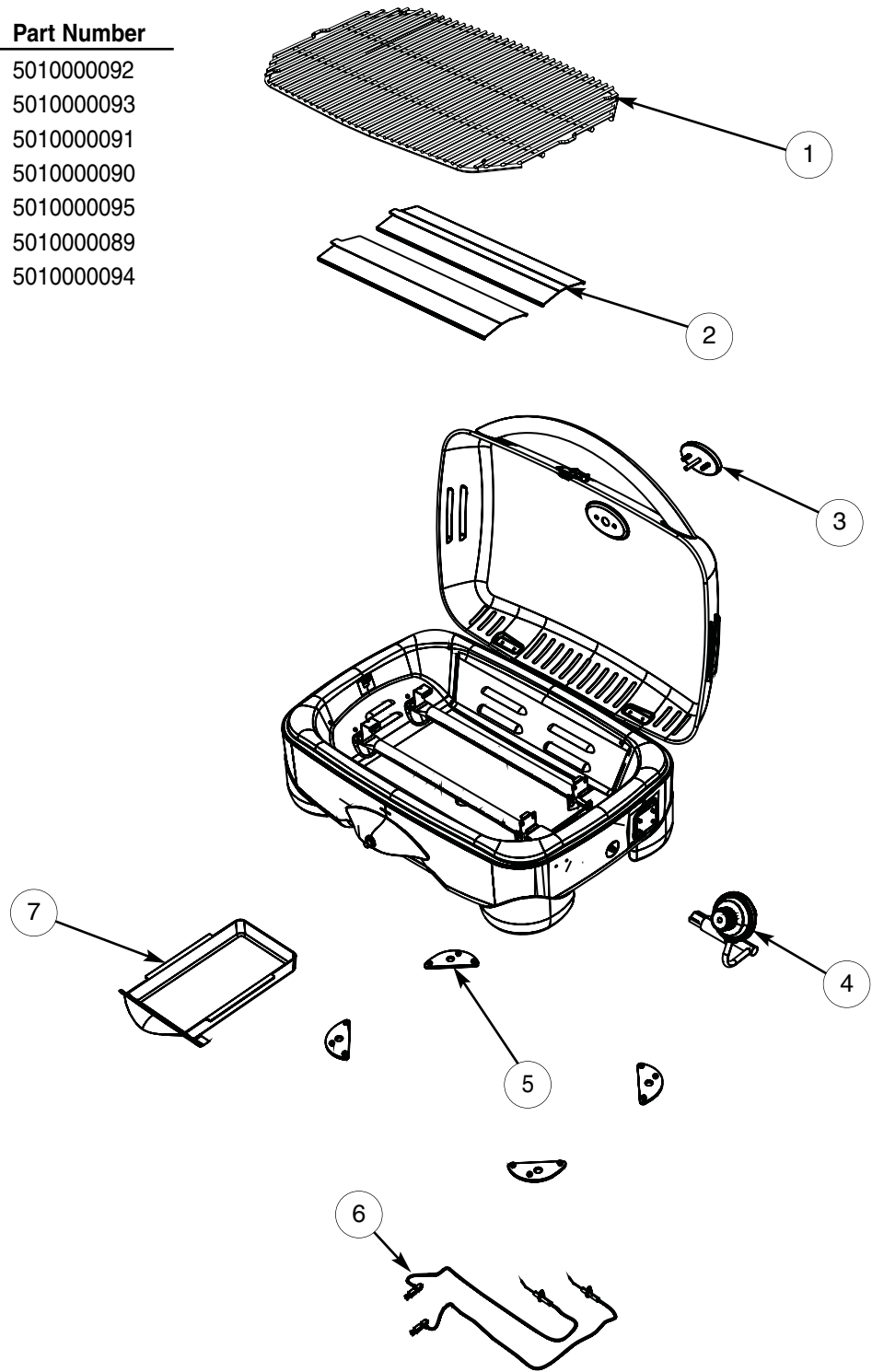
1. To reduce sticking and improve clean-up, spray cooking surface with vegetable oil prior to lighting grill.
2. To reduce flare-ups, use lean cuts of meat, trim excessive fat, and avoid oil based marinades.
3. If flare-ups occur, lower grill temperature, spray area with fresh water, and move food away from flare-up.

Trouble Shooting Guide

Problem	Possible Cause	Possible Solution
Burner will not light with igniter	Igniter electrode covered with grease or residue Igniter/electrode too far from burner Igniter/electrode wire loose or disconnected Wire is shorted causing spark from wire before electrode No spark being generated	Clean igniter electrode Adjust electrode until proper spark appears (see page 11) Call Coleman for service Call Coleman for service Call Coleman for service
Burner will not light even with a match	No gas flow Obstructed gas flow/debris spider webs in burner tube	Check fuel level or replace fuel cylinder Call Coleman for service
Flare-up	Excessive cooking temperature Grease and/or residue build-up Excessive fat in meats Excessive oils in marinades	Reduce flame level Leave lid open Spray with water to cool Clean components Trim fat from cut of meat before grilling Use non-oil based marinades
Yellow sooty flame	Obstructed gas flow/debris or	Call Coleman for service
Flame Blow-out	Flame too low Fuel cylinder is low Obstructed gas flow	Increase flame Check fuel level or replace cylinder Call Coleman for service

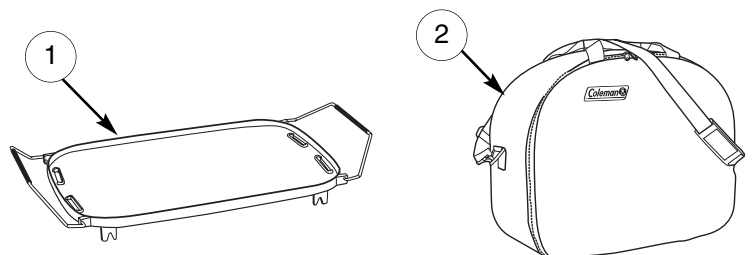
Replacement Parts List – 9971 Series

No.	Description	Part Number
1	Grill Grate	501000092
2	Heat Tent (1 pk.)	501000093
3	Thermometer Assembly	501000091
4	Regulator	501000090
5	Rubber Leg Pads (4 pk.)	501000095
6	Igniter/Piezo/Wire Assembly (2 pk.)	501000089
7	Grease Tray	501000094



Accessories (sold separately) – 9971 Series

No.	Description	Part Number
1	Accessory Griddle	200000640
2	Padded Grill Case	200000641



Limited One Year Warranty

The Coleman Company, Inc. ("Coleman") warrants that for a period of one year from the date of original retail purchase, this product will be free from defects in material and workmanship. Coleman, at its option, will repair or replace this product or any component of the product found to be defective during the warranty period. Replacement will be made with a new or remanufactured product or component. If the product is no longer available, replacement may be made with a similar product of equal or greater value. This is your exclusive warranty.

This warranty is valid for the original retail purchaser from the date of initial retail purchase and is not transferable. Keep the original sales receipt. Proof of purchase is required to obtain warranty performance. Coleman dealers, service centers, or retail stores selling Coleman® products do not have the right to alter, modify or in any way change the terms and conditions of this warranty.

What This Warranty Does Not Cover

This warranty does not cover normal wear of parts, parts that are not genuine Coleman® parts, or damage resulting from any of the following: negligent use or misuse of the product; use on improper voltage or current; commercial use of the product; use contrary to the operating instructions; disassembly, repair or alteration by anyone other than Coleman or an authorized service center. Further, the warranty does not cover Acts of God, such as fire, flood, hurricanes and tornadoes. Warranty void if damage to product results from the use of a part other than a genuine Coleman® part.

COLEMAN SHALL NOT BE LIABLE FOR DEFECTS THAT ARE CAUSED BY THE USE OF UNAUTHORIZED PARTS OR SERVICE. COLEMAN SHALL NOT BE LIABLE FOR ANY INCIDENTAL OR CONSEQUENTIAL DAMAGES CAUSED BY THE BREACH OF ANY EXPRESS OR IMPLIED WARRANTY OR CONDITIONS. EXCEPT TO THE EXTENT PROHIBITED BY APPLICABLE LAW, ANY IMPLIED WARRANTY OF MERCHANTABILITY OR FITNESS FOR A PARTICULAR PURPOSE IS LIMITED IN DURATION TO THE DURATION OF THE ABOVE WARRANTY OR CONDITIONS. SOME STATES, PROVINCES, OR JURISDICTIONS DO NOT ALLOW THE EXCLUSION OR LIMITATION OF INCIDENTAL OR CONSEQUENTIAL DAMAGES OR LIMITATIONS ON HOW LONG AN IMPLIED WARRANTY LASTS, SO THE ABOVE LIMITATIONS OR EXCLUSION MAY NOT APPLY TO YOU. THIS WARRANTY GIVES YOU SPECIFIC LEGAL RIGHTS, AND YOU MAY ALSO HAVE OTHER RIGHTS THAT VARY FROM STATE TO STATE OR PROVINCE TO PROVINCE.

How to Obtain Warranty Service

Take the product to an authorized Coleman service center. You can find the nearest authorized Coleman service center by visiting www.coleman.com or calling 1-800-835-3278 or TDD 316-832-8707 in the United States or 1 800 387-6161 in Canada. If a service center is not conveniently located, attach to the product a tag that includes your name, address, daytime telephone number and description of the problem. Include a copy of the original sales receipt. Carefully package the product and send either by **courier** or **insured mail** with shipping and **insurance** prepaid to:

For products purchased in the United States:

The Coleman Company, Inc.
3600 North Hydraulic
Wichita, KS 67219


The costs of transporting the product to Coleman or an authorized service center for warranty service is the responsibility of the purchaser. Do not mail products with fuel in tanks, or with disposable gas cylinders.

DO NOT RETURN THIS PRODUCT TO THE PLACE OF PURCHASE.

If you have any questions regarding this warranty please call 1-800-835-3278 or TDD 316-832-8707 in the United States or 1 800 387-6161 in Canada.



The Coleman Company, Inc. • 3600 North Hydraulic • Wichita, KS 67219 U.S.A.
1-800-356-3612 • TDD: 316-832-8707

©2007 The Coleman Company, Inc. All rights reserved. Coleman® and  are registered trademarks and InstaStart™ and Shoreside™ are trademarks of The Coleman Company, Inc.