

WILLIAMSBURG ELITE™ 6 FT WHIRLPOOL

Comfortable oval bathing design with form-fitted backrest and molded-in armrests

- ☐ **2806E (specify White 020, Bone 021, or Linen 222)**
- Acrylic with fiberglass reinforcement
 - 2.0 HP self-draining pump/motor with dry run seal
 - Six multi-directional and flow adjustable jets including:
 - Two high performance Ideal-flow™ Jets
 - Four interchangeable Flex-jets™
 - Two silent air volume controls
 - Deck-mounted On/Off control
 - Complete factory installed and tested whirlpool system
- ☐ **2806EC (specify White 020, Bone 021, or Linen 222)**
- Same as above with the StayClean™ whirlpool system featuring Antimicrobial AlphaSan®

Nominal Dimensions: 72" x 36" x 21-1/2"
(1829 x 915 x 546mm)



**Compliance Certifications -
Meets or Exceeds the Following Specifications:**

- Underwriters Laboratories - Hydromassage Bathtubs UL 1795
- ASME A112.19.7M for Whirlpool Appliances
- ANSI Z124.1 for Plastic Bathtubs
- ASTM E162 for Flammability
- NFPA 258 for Smoke Density

Components Needed:

- ☐ Bath Filler*: (specify finish)
- ☐ Bath Drain: BATH-DRAIN (specify Chrome 002, Polished Brass 099, or Satin 295)

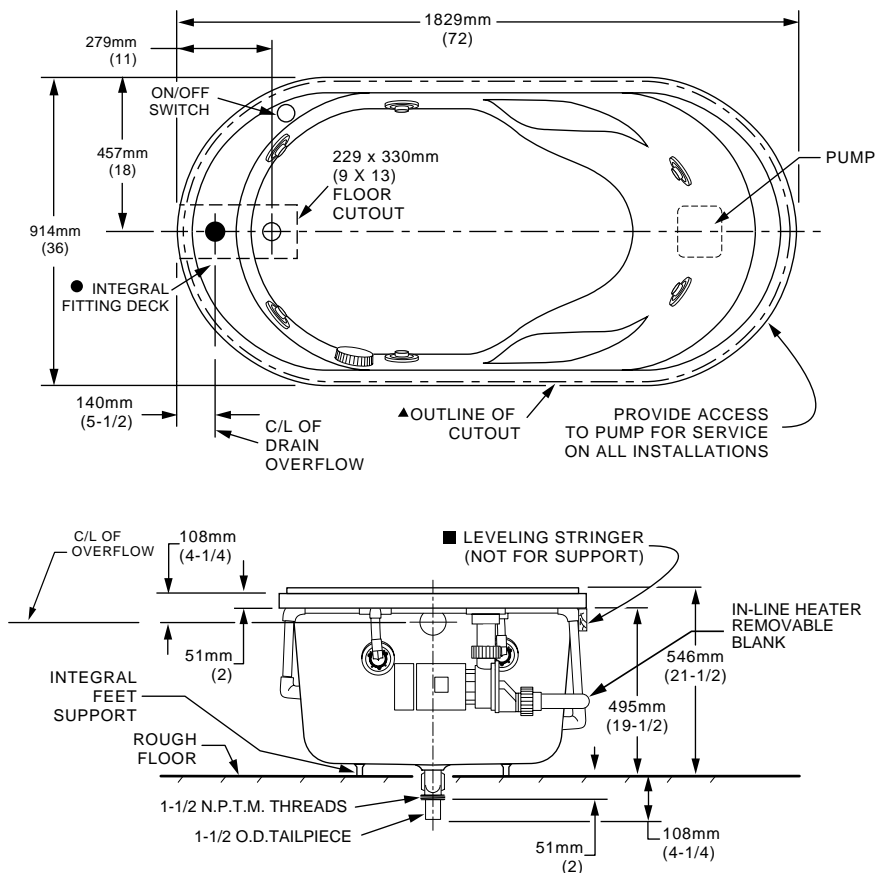
Custom Accessories Available:

- ☐ Pulse Jet Kit: PULSE-JET (two per kit, specify White 020, Bone 021, or Linen 222)
- ☐ Soft Jet Kit: SOFT-JET (two per kit, specify White 020, Bone 021, or Linen 222)
- ☐ E-Z-Install™ Whirlpool Heater - EZHEAT-100

NOTE: Roughing-in dimensions and product specifications shown on reverse side of page.

NOTE: E-Z-Install™ Whirlpool Heater is designed to maintain water temperature during operation. It will not heat cold water to desired bathing temperature.

* See American Standard Faucet Selector



GENERAL SPECIFICATIONS FOR 2806E WHIRLPOOL

INSTALLED SIZE	72 x 36 x 21-1/2 In. (1829 x 914 x 546mm)
WEIGHT	135 Lbs. (61 Kg.)
WEIGHT w/WATER	744 Lbs. (338 Kg.)
GAL. TO OVERFLOW	73 Gal. (276 L)
WHIRLPOOL MIN. OPERATING VOL.	44 Gal. (167 L)
BATHING WELL AT SUMP	45 x 24 In. (1143 x 610mm)
BATHING WELL AT RIM	60 x 30 In. (1524 x 762 mm)
WATER DEPTH TO OVERFLOW	14-1/2 In. (368mm)
FLOOR LOADING (PROJECTED AREA)	41 Lbs./Sq.Ft. (198 Kgs./Sq.m)
PTS.	25.6
CUBE (FT³)	49.4

WHIRLPOOL ELECTRICAL SPECIFICATIONS

PUMP	2.1 HP, 14.4 AMPS, 120V.
------	--------------------------

NOTES:

BATH CAN BE INSTALLED EITHER ABOVE OR BELOW FLOOR LINE AS PIER, ISLAND, OR PENINSULA TYPE INSTALLATION. SUMP OF BATH IS SUPPORTED BY INTEGRAL FEET. NO ADDITIONAL SUPPORT REQUIRED. ENCLOSING MATERIAL BY OTHERS.

■ REFER TO INSTALLATION INSTRUCTIONS SUPPLIED WITH WHIRLPOOL FOR ADDITIONAL INFORMATION.

▲ CUTOUT TEMPLATE PROVIDED IN SHIPPING BOX. MAY BE REQUESTED SEPARATELY.

FITTINGS NOT INCLUDED AND MUST BE ORDERED SEPARATELY.

PROVIDE SUITABLE REINFORCEMENT FOR ALL SUPPORTS.

● IF INSTALLING A DECK-MOUNTED FITTING, BEFORE DRILLING ANY HOLES: CHECK FOR INTERFERENCE WITH CIRCULATING SYSTEM PIPING, DRAIN OVERFLOW, AND APRON INSTALLATION. MOUNTING HOLES DRILLED BY INSTALLER.

SUPPLY PIPING NOT INCLUDED.

IMPORTANT: Dimensions of fixtures are nominal and may vary within the range of tolerances established by ANSI Standard Z124.1. These measurements are subject to change or cancellation. No responsibility is assumed for use of superseded or voided pages.