



Quick Reference Card

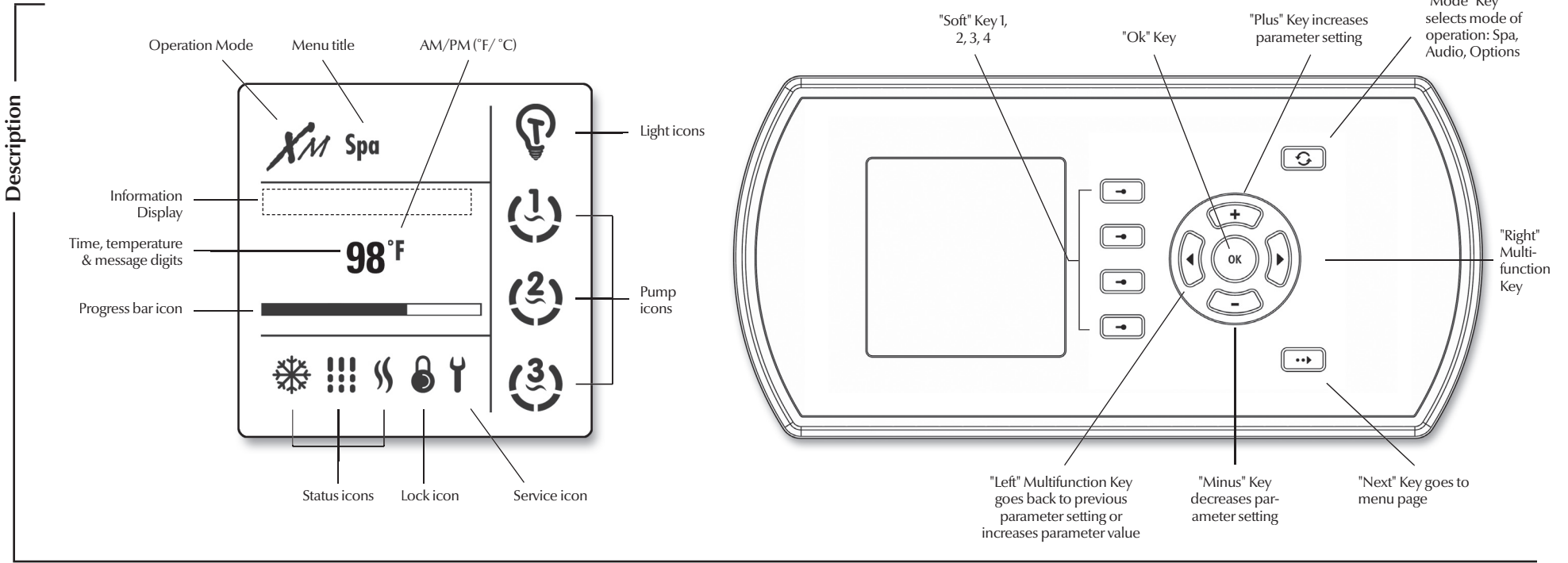
Please consult your spa user manual for complete info on the features of your spa system.



in.k600

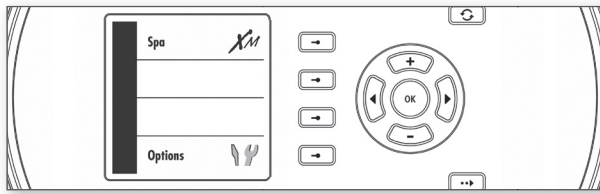
Advanced series of full-function keypads that give complete control to wet fingers!

Aeware's new series of keypads features a high profile with a large LCD display, menu-driven interface and raised keys that let users easily control all in.xm functions and programming directly from spa side, creating a true and unique user experience.

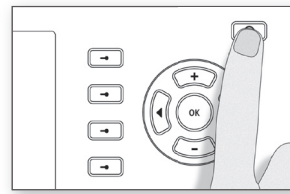


Main Functions

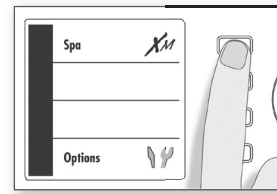
- Start Pump 1
- Start Pump 2
- Start Light
- Starting Blower
- Economy Mode
- Standby Mode
- Display Time
- Progress Bars



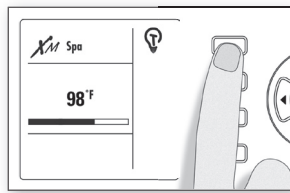
This menu allows control of all pumps, blower and spa light, as well as the activation of the Economy and Standby modes. Every time a device is on, its animated icon is displayed. All pump activity can be stopped at once by activating the Standby mode.



- Press Mode key to display the mode Selection window.



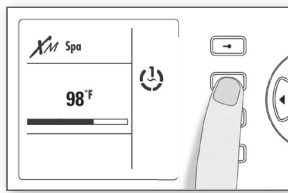
- Select Spa to view Spa menu.



Starting Light

- Select Light key to turn light on.
- Select Light key again to turn light off.

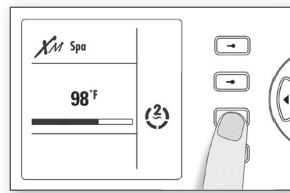
(120 minute built-in timer)



Starting Pump 1

- Select Pump 1 to turn Pump 1 on.
- Select Pump 1 repeatedly to control pump 1 speeds.

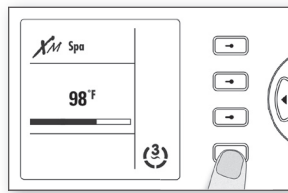
(20 minute built-in timer)



Starting Pump 2

- Select Pump 2 to turn Pump 2 on.
- Select Pump 2 once more to turn pump 2 off.

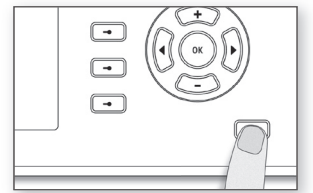
(20 minute built-in timer)



Starting Pump 3

- Select Pump 3 to turn Pump 3 on.
- Select Pump 3 once more to turn pump 3 off.

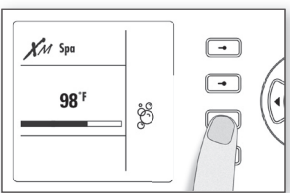
(20 minute built-in timer)



Next menu page

- Press Next key to display the next page in the spa menu.

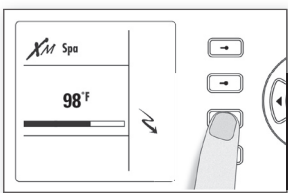
Goes to blower option



Starting Blower

- Select Blower to turn Blower on.
- Select Blower once more to turn blower off.

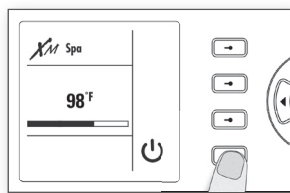
(20 minute built-in timer)



Turning Economy on

Lowers the temperature set point of the spa by 20°F (11°C).

- Select Economy to activate the Economy mode.
- Select Economy again to override economy programming (see spa setup section)



Standby Mode

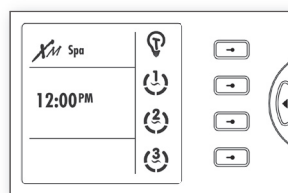
Stops all pumps at the same time by a simple click of a button!

- Select Standby to activate this mode.
- Select Standby to again to resume normal operations.

System automatically returns to Normal mode after a certain period of time, unless the Standby mode has been reactivated.

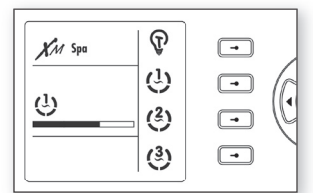
Spa light will flash for a few seconds before the exit of Standby mode and restart the pumps. The "Standby" message is also displayed during Standby mode.

* Pump will stay turned on if there is a request for more heat.



Displaying time

- Press Ok key to display the time.
- Press Ok key a second time to go back to water temperature display.



Viewing active progress bars

A progress bar is a visual indicator of the time remaining before a device is turned off or before the end of the Standby mode. Only one bar is displayed at the time.

- Use Left or Right keys to visualize the progress bar of each activated device.

Programming

- Filter cycles
- Economy Mode
- Reminders
- Warnings



Programming spa system

To program the filter cycle, you must enter these parameters: start time, duration and frequency. During a filter cycle, pumps run for one minute to purge the plumbing, then Pump 1 runs for the programmed number of hours.

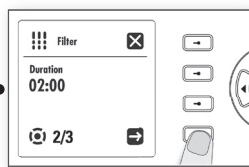
- Press Mode key
- Select Options menu
- Select Spa sub-menu
- Select Filter option



Setting filter cycles start time

The display will show the starting hour previously set.

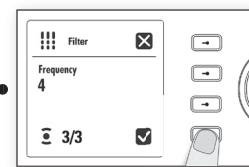
- Use (+) or (-) key to select hour setting.
- Use Right key to set minutes.
- Use (+) or (-) key to change minutes.
- Select Next arrow on screen menu to go to the next parameter: filter cycle duration.



Setting cycle duration

Here we set a value for the filter cycle duration, in hours and minutes.

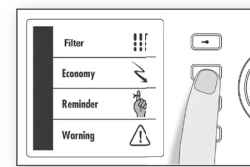
- Use (+) or (-) key to set hour setting.
- Use Right key to set minutes.
- Use (+) or (-) key to change minutes.
- Select Next arrow on screen menu to save changes and go to the next parameter: filter cycle frequency.



Setting filter cycle frequency

Here we set the number of filtering cycles that the system will perform per day.

- Use (+) or (-) key to select frequency setting.
- Select Enter option on screen menu to save changes and go to back to spa options main menu.



Setting Economy mode

- Select Economy



Setting Economy status

- Use (+) key to enable the economy mode, the display will show **On**.
- Use (-) key to disable economy mode, the display will show **Off**.



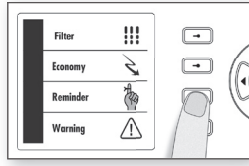
Setting Economy start time

- Select Next arrow on screen menu to save changes and go to economy cycle start hour.
- Use (+) or (-) key to set hour setting.
- Use Left key to access minutes option.
- Use (+) or (-) key to set minutes.
- Select Next arrow on screen menu to save changes and go to the next parameter stop economy.



Setting Economy stop time

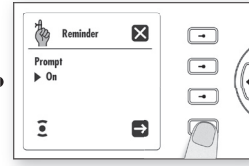
- Use (+) or (-) key to set hour setting.
- Use Left key to access minutes option.
- Use (+) or (-) key to set minutes.
- Select Enter option on screen menu to save changes and go to back to spa options menu.



Setting maintenance reminder prompts

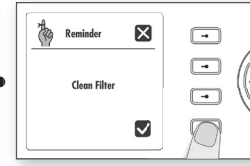
This menu allows you to activate/deactivate or simply reset the maintenance reminder prompts.

- Select Reminder option



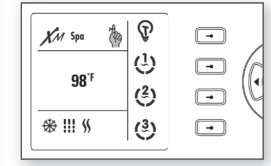
Turning reminders on/off

- Use (+) or (-) key to activate or deactivate prompt(s).
- Select Next arrow on screen menu to save changes and go to next menu screen.



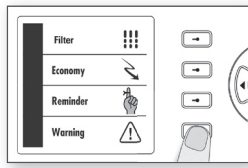
Resetting prompt messages

- Use Left or Right keys to review one by one all active maintenance messages.
- Select Enter option on screen menu to reset message and view next task or go back to main menu.



Viewing spa reminders

The reminder icon will show up to prompt you to review active maintenance messages.



Spa warnings

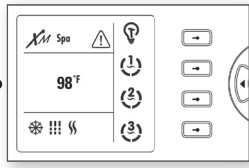
This menu allows for you to view all active warning messages ie.: hot water.

- Select Warning option



Turning warnings on/off

- Use Left or Right keys to review all warning messages.
- Press Mode key again to go back to main menu.

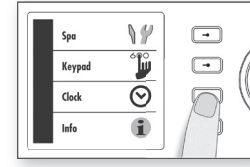


Viewing spa warnings

The warning icon shows up to prompt you to review active warning messages.

Time setting

- Time of day



Setting the time

- Press Mode key
- Select Options menu
- Select Clock setting

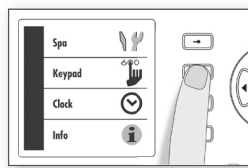


Setting hour settings

- Use (+) or (-) key to set hour setting.
- Use Left or Right keys to access minutes option.
- Use (+) or (-) key to set minutes.
- Select Enter option on screen menu to back to keypad main menu.

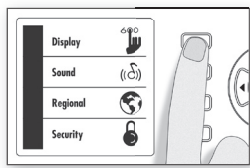
Other Settings

- Keypad display
- Sound
- Regional
- Security



To program keypad settings

- Press Mode key
- Select Options menu
- Select Keypad sub-menu



Setting keypad display options

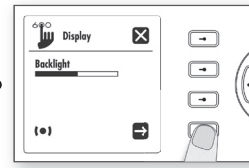
This sub-menu is used to set keypad display settings such as: contrast, backlight, etc.

- Select Display options



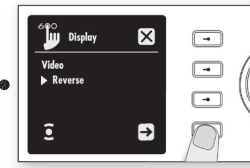
Adjusting contrast

- Use Left or Right keys to adjust desired level of contrast.
- Select Next arrow on display to save changes and go to next screen menu.



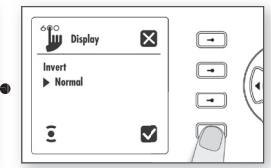
Adjusting backlight

- Use Left or Right keys to adjust backlight brightness.
- Select Next arrow on display to save changes and go to next screen menu.



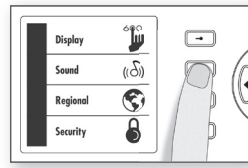
Normal/Reverse display

- Use (+) or (-) key to activate or deactivate reverse display.
- Select Next arrow on display to save changes and go to next screen menu.



Display orientation (inverting)

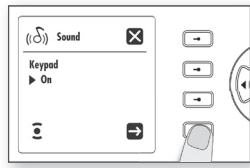
- Use (+) or (-) key to activate or deactivate reverse display.
- Select Enter option on screen menu to back to keypad main menu.



Setting keypad audio options

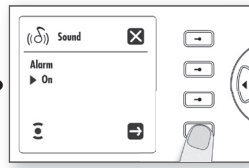
This sub-menu is used to set keypad audible options setting such as: keypad on (key beep) and alarm.

- Select Sound options



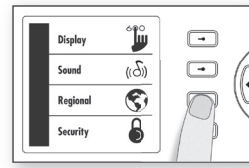
Keypad beep on/off

- Use (+) or (-) key to activate or deactivate reverse display.
- Select Next arrow on display to save changes and go to next screen menu.



Turning alarm sound on

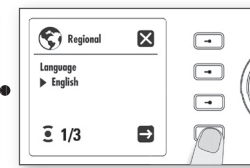
- Use (+) or (-) key to activate or deactivate alarm sound.
- Select Next arrow on display to save changes and go to next screen menu.



Setting regional settings

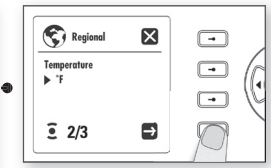
This sub-menu is used to set keypad regional settings such as: language, select temperature display units and choose a format for time display.

- Select Regional options



Setting language

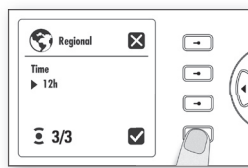
- Use (+) or (-) to select from: English, Français Spanish & Deutsch
- Select Next arrow on display to save changes and go to next screen menu.



Temperature units

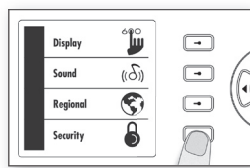
Water temperature can be displayed in °F or °C.

- Use (+) or (-) to change setting.
- Select Next arrow on display to save changes and go to next screen menu.



Selecting time format

- Use (+) or (-) to change setting.
- Select Next arrow on display to save changes and go back to keypad main menu.



Security options

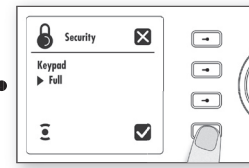
Partial keypad lock: basic functions of the spa remain accessible (pump and light outputs) but it's impossible to change the temperature Set Point, or to enter Programming mode. Full lock: all keys are disabled. When the keypad is locked, the icon will be displayed.

- Select Security options



Partial keypad lockout

- Use (+) or (-) key to select "Partial".
 - Select Enter option on screen menu to back to keypad main menu.
- To unlock the keypad:
- Select Mode key
 - Press and hold Option key for 5 seconds

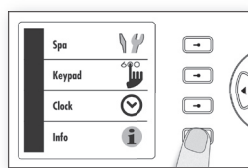


Full keypad lockout

- Use (+) or (-) key to select "Full".
 - Select Enter option on screen menu to back to keypad main menu.
- To unlock the keypad, press and hold Light key for 5 seconds.

System info

- Spa
- Heater
- Keypad
- Reset
- Upgrade



Viewing information about the system

To view spa equipment data such as: system, heater and keypad software version, to reset programmed settings and to upgrade keypad software.

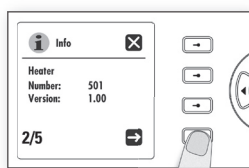
- Press Mode key
- Select Options menu
- Select Info sub-menu



Viewing information about spa

Spa software ID number and version are displayed.

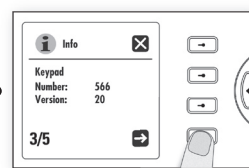
- Select Next arrow on display to next screen menu.



Viewing information on heater software

Heater software ID number and version are displayed.

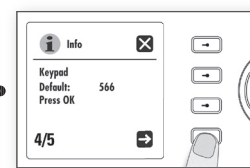
- Select Next arrow on display to next screen menu.



Viewing information on keypad software

Keypad software ID number and version are displayed.

- Select Next arrow on display to next screen menu.



Resetting keypad programmed values

- Press Ok to reset back to default factory values.
- Select Next arrow on display to next screen menu.



Upgrading keypad software

- Use Ok key to start the upgrade of the software of the keypad.
- Select Enter option on screen menu to back to keypad main menu and not upgrade the software of the keypad.