

**SCALA CORNER WHIRLPOOL & BATHING POOL**

- 2664.118 Whirlpool** with right hand drain outlet
- 2664.218 Whirlpool** with left hand drain outlet
  - Acrylic with fiberglass reinforcement
  - Factory installed and tested whirlpool system
  - 1.0 HP single speed self-draining pump/motor with dry run seal
  - Six multi-directional and individually flow-rate adjustable color-coordinated jets
  - Two color-coordinated air volume controls
  - Anti-vortex suction fitting
  - Deck-mounted color-coordinated air switch On/Off control
  - U.L.® Listed Hydromassage bathtub
  - Textured tub bottom pattern
  - Integral sump support feet
  - Factory installed power cord with plug
  - Dual molded-in lumbar support
  - Molded-in seat
  - Molded-in water retention flange
- 2664.102 Bathing Pool only** with Right-hand Drain Outlet
- 2664.202 Bathing Pool only** with Left-hand Drain Outlet

Nominal Dimensions: 1524 x 1524 x 502mm  
(60" x 60" x 19-3/4")

**Compliance Certifications -  
Meets or Exceeds the Following Specifications:**

- Underwriters Laboratories - Hydromassage Bathtubs UL 1795
- ASME A112.19.7M for Whirlpool Appliances
- ANSI Z124.1 for Plastic Bathtubs
- ASTM E162 for Flammability
- NFPA 258 for Smoke Density



**To Be Specified - Required:**

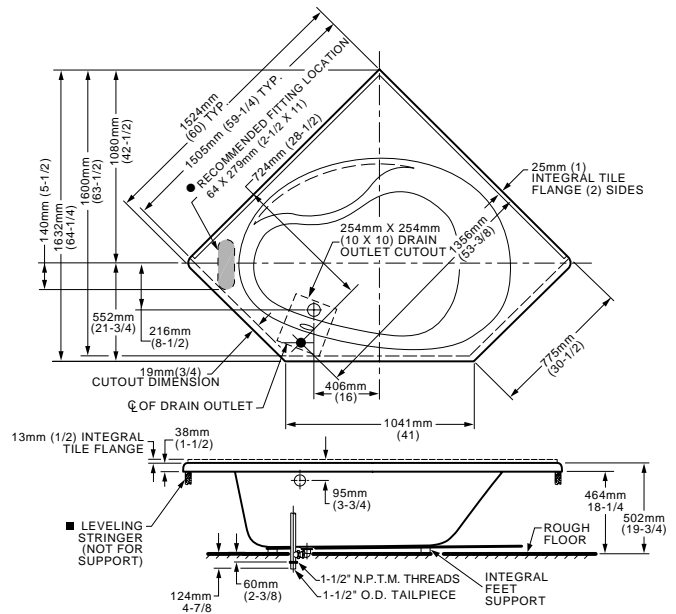
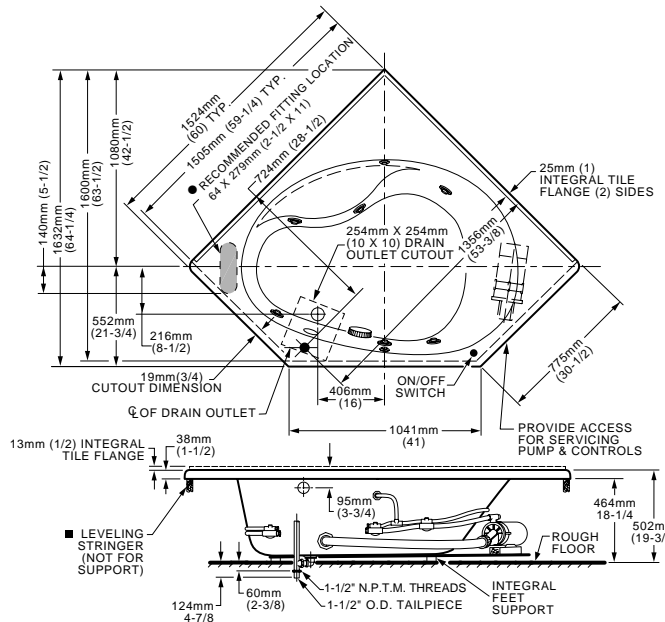
- Bath Filler\*
- Drain: 1553.270 (specify Chrome , Polished Brass or Satin)
- Color:

**To Be Specified - Optional:**

- Metal Air Volume Control Kit: 9850.200-two per kit (specify Chrome, Polished Brass or Satin)
- Metal Jet Trim Ring Kit: 9860.200-two per kit (specify Chrome or Polished Brass or Satin)

\* See faucet section for models available

**NOTE:** Roughing-in dimensions and product specifications shown on reverse side of page.



**GENERAL SPECIFICATIONS FOR 2664 WHIRLPOOL**

INSTALLED SIZE	60 x 60 x 19-3/4 In. (1524 x 1524 x 502mm)
WEIGHT	114 Lbs. ( 51 Kg.)
WEIGHT w/WATER	781 Lbs. (351 Kg.)
GAL. TO OVERFLOW	80 Gal. (303 L)
WHIRLPOOL MIN. OPERATING VOL.	58 Gal. (220 L)
BATHING WELL AT SUMP	42 x 28 In. (1067 x 711mm)
BATHING WELL AT RIM	60 x 40 In. (1524 x 1016mm)
WATER DEPTH TO OVERFLOW	14 In. (356mm)
FLOOR LOADING (PROJECTED AREA)	37 Lbs./Sq.Ft. (182 Kgs./Sq.m)
PTS.	41.7
CUBE (FT <sup>3</sup> )	68.4

**WHIRLPOOL ELECTRICAL SPECIFICATIONS**

SYSTEM I PUMP \_\_\_\_\_ 1.0 HP, 9.9 AMPS, 120V.

**GENERAL SPECIFICATIONS FOR 2664 BATHING POOL**

INSTALLED SIZE	60 x 60 x 19-3/4 In. (1524 x 1524 x 502mm)
WEIGHT	94 Lbs. (42 Kg.)
WEIGHT w/WATER	761 Lbs. (342 Kg.)
GAL. TO OVERFLOW	80 Gal. (303 L)
BATHING WELL AT SUMP	42 x 28 In. (1067 x 711mm)
BATHING WELL AT RIM	60 x 40 In. (1524 x 1016mm)
WATER DEPTH TO OVERFLOW	14 In. (356mm)
FLOOR LOADING (PROJECTED AREA)	36 Lbs./Sq.Ft. (177 Kgs./Sq.m)
PTS.	41.7
CUBE (FT <sup>3</sup> )	68.4

**NOTES:**

BATH CAN BE INSTALLED EITHER ABOVE OR BELOW FLOOR LINE AS PIER, ISLAND, OR PENINSULA TYPE INSTALLATION. SUMP OF BATH IS SUPPORTED BY INTEGRAL FEET. NO ADDITIONAL SUPPORT REQUIRED. ENCLOSING MATERIAL BY OTHERS.

- REFER TO INSTALLATION INSTRUCTIONS SUPPLIED WITH WHIRLPOOL FOR ADDITIONAL INFORMATION.

CONCEALED PIPING NOT INCLUDED.

FITTINGS NOT INCLUDED AND MUST BE ORDERED SEPARATELY.

- IF INSTALLING A DECK-MOUNTED FITTING, BEFORE DRILLING ANY HOLES: CHECK FOR INTERFERENCE WITH CIRCULATING SYSTEM PIPING, DRAIN OVERFLOW, AND APRON INSTALLATION. MOUNTING HOLES DRILLED BY INSTALLER.

PROVIDE SUITABLE REINFORCEMENT FOR ALL SUPPORTS.

IMPORTANT: Dimensions of fixtures are nominal and may vary within the range of tolerances established by ANSI Standard Z124.1. These measurements are subject to change or cancellation. No responsibility is assumed for use of superseded or voided pages.