

**SAVONA ELITE™ 6' WHIRLPOOL**

Comfortable two person design with generous back support positions and molded-in armrests

- 2901E (specify White 020, Bone 021, or Linen 222)**
  - Acrylic with fiberglass reinforcement
  - 2.0 HP self-draining pump/motor with dry run seal
  - Ten multi-directional and flow adjustable jets including:
    - Two high performance Ideal-flow™ Jets
    - Eight interchangeable Flex-jets™
  - Three silent air volume controls
  - Deck-mounted On/Off control
  - Complete factory installed and tested whirlpool system
  
- 2901EC (specify White 020, Bone 021, or Linen 222)**
  - Same as above with the StayClean™ whirlpool system featuring Antimicrobial AlphaSan®

Nominal Dimensions: 71-1/4" x 43-1/2" x 22"  
(1810 x 1105 x 559mm)



**Components Needed:**

- Bath Filler\*: (specify finish)
- Bath Drain: BATH-DRAIN (specify Chrome 002, Polished Brass 099, or Satin 295)

**Custom Accessories Available:**

- Pulse Jet Kit: PULSE-JET (two per kit, specify White 020, Bone 021, or Linen 222)
- Soft Jet Kit: SOFT-JET (two per kit, specify White 020, Bone 021, or Linen 222)
- E-Z-Install™ Whirlpool Heater - EZHEAT-100
- Tile Bead Kit: TILE-BEAD

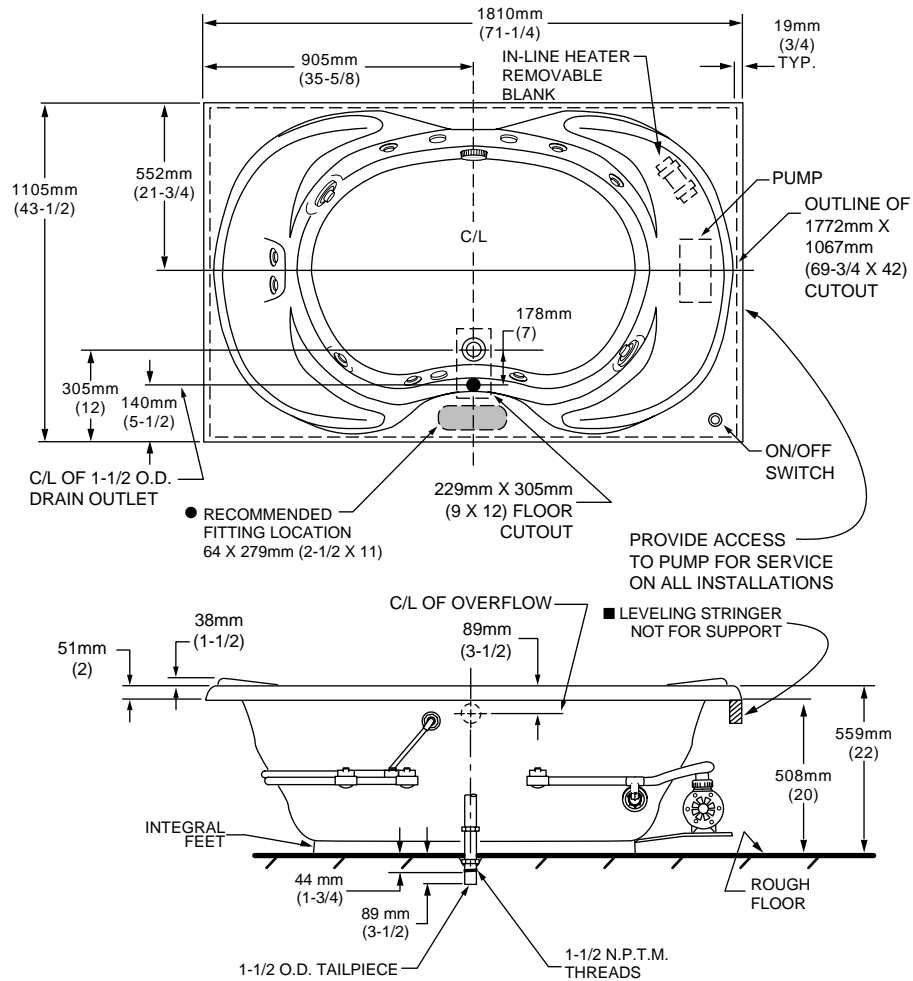
\* See American Standard Faucet Selector

**Compliance Certifications - Meets or Exceeds the Following Specifications:**

- Underwriters Laboratories - Hydromassage Bathtubs UL 1795
- ASME A112.19.7M for Whirlpool Appliances
- ANSI Z124.1 for Plastic Bathtubs
- ASTM E162 for Flammability
- NFPA 258 for Smoke Density

**NOTE:** Roughing-in dimensions and product specifications shown on reverse side of page.

NOTE: E-Z-Install™ Whirlpool Heater is designed to maintain water temperature during operation. It will not heat cold water to desired bathing temperature.



GENERAL SPECIFICATIONS FOR 2901E WHIRLPOOL	
INSTALLED SIZE	71-1/4 x 43-1/2 x 22 In. (1810 x 1105 x 559mm)
WEIGHT	152 Lbs. (68 Kg.)
WEIGHT w/WATER	936 Lbs. (421 Kg.)
GAL. TO OVERFLOW	94 Gal. (356 L)
WHIRLPOOL MIN. OPERATING VOL.	86 Gal. (326 L)
BATHING WELL AT SUMP	44 x 28 In. (1118 x 711mm)
BATHING WELL AT RIM	67-1/2 x 33 In. (1715 x 838mm)
WATER DEPTH TO OVERFLOW	16-1/4 In. (413mm)
FLOOR LOADING (PROJECTED AREA)	43 Lbs./Sq.Ft. (211 Kgs./Sq.m)
PTS.	27.8
CUBE (FT <sup>3</sup> )	61.5
WHIRLPOOL ELECTRICAL SPECIFICATIONS	
PUMP	2.1 HP, 14.4 AMPS, 120V.

**NOTES:**

BATH CAN BE INSTALLED EITHER ABOVE OR BELOW FLOOR LINE AS PIER, ISLAND OR PENINSULA TYPE INSTALLATION. SUMP OF BATH IS SUPPORTED BY INTEGRAL FEET. NO ADDITIONAL SUPPORT REQUIRED. ENCLOSING MATERIALS BY OTHERS.

- IF INSTALLING A DECK-MOUNTED FITTING, BEFORE DRILLING ANY HOLES: CHECK FOR INTERFERENCE WITH CIRCULATING SYSTEM PIPING AND DRAIN OVERFLOW. MOUNTING HOLES DRILLED BY INSTALLER.

OPTIONAL TILING BEAD KIT No. TILE-BEAD AVAILABLE AND MUST BE ORDERED SEPARATELY.

- REFER TO INSTALLATION INSTRUCTIONS SUPPLIED WITH WHIRLPOOL FOR ADDITIONAL INFORMATION. FITTINGS NOT INCLUDED AND MUST BE ORDERED SEPARATELY.

PROVIDE SUITABLE REINFORCEMENT FOR ALL SUPPORTS.

**IMPORTANT:** Dimensions of fixtures are nominal and may vary within the range of tolerances established by ANSI Standard Z124.1 / CSA Certified. These measurements are subject to change or cancellation. No responsibility is assumed for use of superseded or voided leaflet.