

CADET ELITE™ 5' X 42" WHIRLPOOL

Comfortable bathing design with form-fitted backrest and molded-in armrests

- ☐ **2772E (specify White 020, Bone 021, or Linen 222)**
 - Acrylic with fiberglass reinforcement
 - 1.5 HP self-draining pump/motor with dry run seal
 - Eight multi-directional and flow adjustable jets including:
 - Two high performance Ideal-flow™ Jets
 - Six interchangeable Flex-jets™
 - Two silent air volume controls
 - Deck-mounted On/Off control
 - Complete factory installed and tested whirlpool system
- ☐ **2772EC (specify White 020, Bone 021, or Linen 222)**
 - Same as above with the StayClean™ whirlpool system featuring Antimicrobial AlphaSan®

Nominal Dimensions:

60" x 42" x 19-3/4"

(1524 x 1067 x 502mm)



Components Needed:

- ☐ Bath Filler*: (specify finish)
- ☐ Bath Drain: BATH-DRAIN (specify Chrome 002, Polished Brass 099, or Satin 295)

Custom Accessories Available:

- ☐ Pulse Jet Kit: PULSE-JET (two per kit, specify White 020, Bone 021, or Linen 222)
- ☐ Soft Jet Kit: SOFT-JET (two per kit, specify White 020, Bone 021, or Linen 222)
- ☐ Five Foot Apron: 5FT-APRON (specify White 020, Bone 021, or Linen 222)
- ☐ E-Z-Install™ Whirlpool Heater - EZHEAT-100
- ☐ Tile Bead Kit: TILE-BEAD

Compliance Certifications -

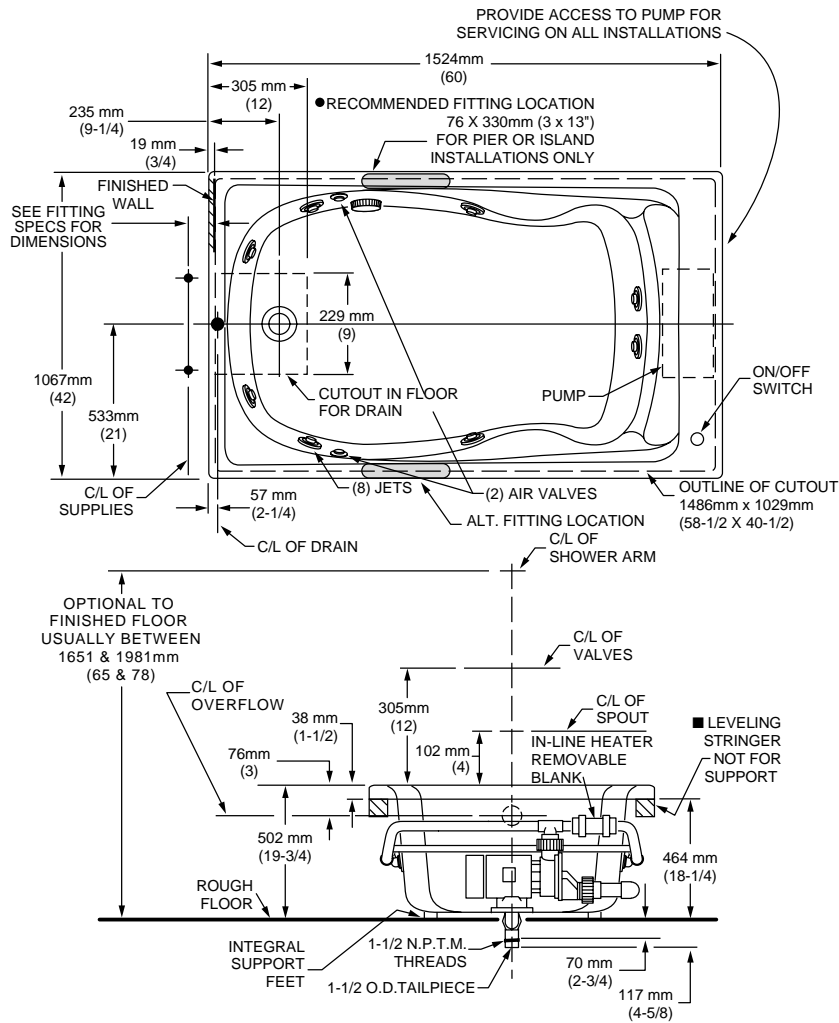
Meets or Exceeds the Following Specifications:

- Underwriters Laboratories - Hydromassage Bathtubs UL 1795
- ASME A112.19.7M for Whirlpool Appliances
- ANSI Z124.1 for Plastic Bathtubs
- ASTM E162 for Flammability
- NFPA 258 for Smoke Density

NOTE: Roughing-in dimensions and product specifications shown on reverse side of page.

NOTE: E-Z-Install™ Whirlpool Heater is designed to maintain water temperature during operation. It will not heat cold water to desired bathing temperature.

* See American Standard Faucet Selector



GENERAL SPECIFICATIONS FOR 2772E WHIRLPOOL

INSTALLED SIZE	60 x 42 x 19-3/4 In. (1524mm x 1067mm x 502mm)
WEIGHT	117 Lbs. (53 Kg.)
WEIGHT w/WATER	642 Lbs. (289 Kg.)
GAL. TO OVERFLOW	63 Gal. (239 L.)
MIN. OPERATING GAL.	54 Gal. (204 L.)
BATHING WELL AT SUMP	40 x 26 In. (1016 x 660mm)
BATHING WELL AT RIM	52 x 32-1/2 In. (1321 x 826mm)
WATER DEPTH TO OVERFLOW	13-1/4 In. (337mm)
FLOOR LOADING	37 Lbs./Sq. Ft. (182 Kgs/Sq. m.) (PROJECTED AREA)
PTS.	27.8
CUBE (FT³)	45.4

WHIRLPOOL ELECTRICAL SPECIFICATIONS

PUMP	1.6 HP, 9.7 AMPS, 120V.
------	-------------------------

NOTES:

BATH CAN BE INSTALLED EITHER ABOVE OR BELOW FLOOR LINE AS PIER, ISLAND, OR PENINSULA TYPE INSTALLATION. SUPPORT OF BATH BY SUMP BEDDING. SUPPORT AND ENCLOSING MATERIAL BY OTHERS.

- REFER TO INSTALLATION INSTRUCTIONS SUPPLIED WITH WHIRLPOOL FOR ADDITIONAL INFORMATION.

OPTIONAL 3 WALL TILING BEAD. KIT No. TILE-BEAD AND APRON No. 5FT-APRON AVAILABLE AND MUST BE ORDERED SEPARATELY.

FITTINGS NOT INCLUDED AND MUST BE ORDERED SEPARATELY.

PROVIDE SUITABLE REINFORCEMENT FOR ALL SUPPORTS.

IMPORTANT:

Dimensions of fixtures are nominal and may vary within the range of tolerances established by ANSI Standard Z124.1
These measurements are subject to change or cancellation. No responsibility is assumed for use of superseded or voided leaflet.