

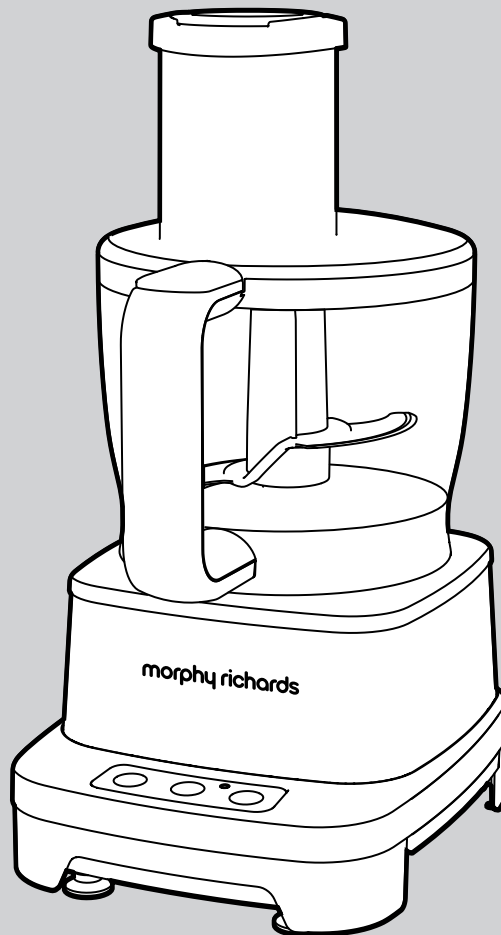
FP48911 MUK Rev 1

morphy richards®



Accents Food Processor

 Please read and keep these instructions for future use



48911

For competitions, product hints and tips and more join us at



www.morphyrichards.co.uk/blog



www.facebook.com/morphyrichardsuk

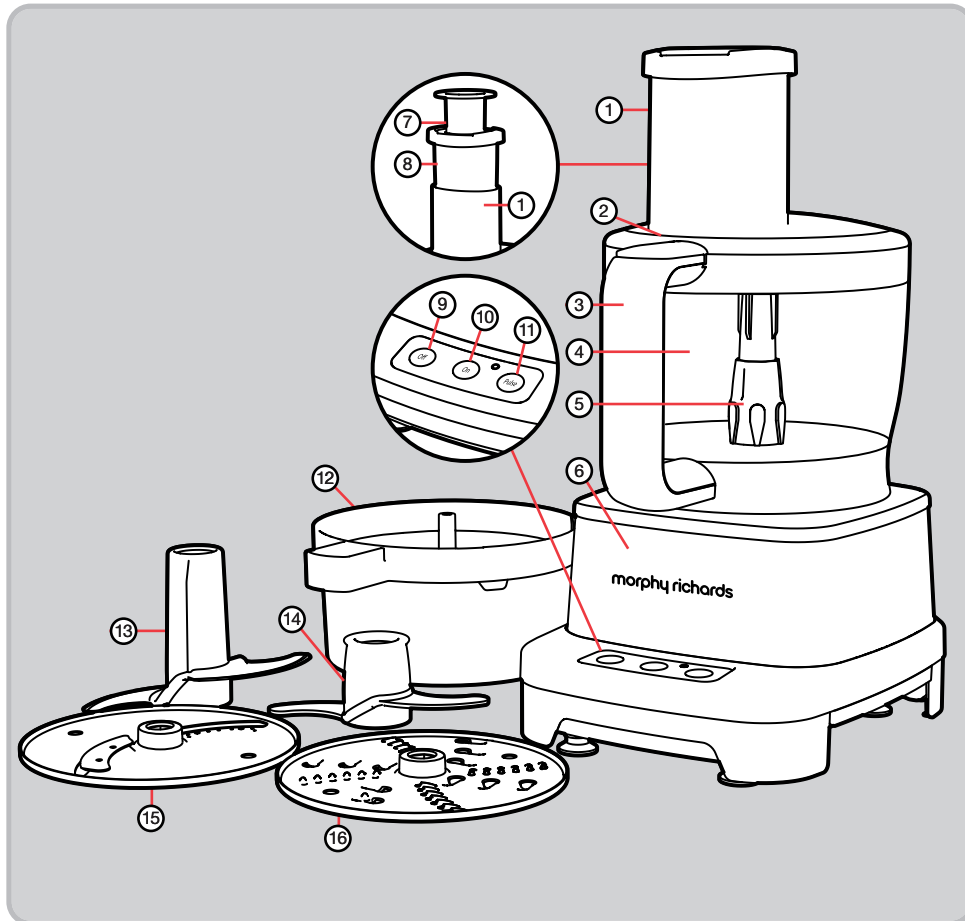


www.twitter.com/loveyourmorphy

www.morphyrichards.com

* Register online for your 2 year guarantee. See back of this instruction book for details. (UK and Ireland customers only)

Product overview



Features

- | | |
|------------------|---------------------|
| (1) Feed Tube | (10) On Button |
| (2) Lid | (11) Pulse Button |
| (3) Handle | (12) Tool Storage |
| (4) Bowl | (13) Chopping Blade |
| (5) Spindle | (14) Dough Blade |
| (6) Main Unit | (15) Slicing Disc |
| (7) Small Pusher | (16) Grating Disc |
| (8) Large Pusher | |
| (9) Off Button | |

Introduction

Thank you for your recent purchase of this Morphy Richards Accents Food Processor.

Please read the instructions thoroughly before use.

Remember to visit www.morphyrichards.co.uk to register your product's two year guarantee.

Before first use

- Carefully unpack your new appliance and all its attachments and tools, checking them against the illustrations at the beginning of this book to familiarise yourself with the product.
- **WARNING:** Take care - blades are sharp

Wash all parts except the Main Unit (6) in hot soapy water.

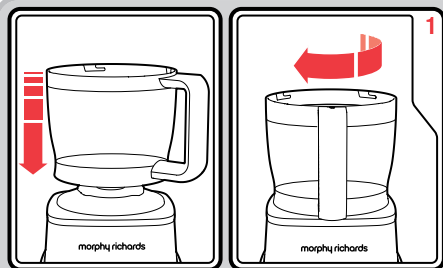
Never immerse the Main Unit in water or any other liquid. This may be wiped over with a clean, damp cloth - but only when unplugged from the electrical outlet.

Attachment guide

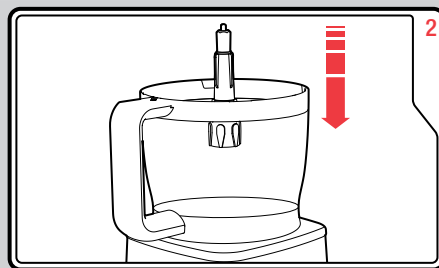
Attachment	Function	Food type	Max volume	Time	Tips
• Chopping Blade (13)	• Chopping	• Vegetables, meat, cheese, chocolate	• 700g	• 15-20 sec	• Pulse gives control over texture
	• Blending	• Soup, drinks	• 700g	• 20 sec	
	• Pureeing	• Cooked vegetables, potatoes, fruit	• 600g	• 10-15 sec	
• Dough Blade (14)	• Mixing	• Pastry, scones	• 350g	• 1 min max	• Max volume = weight of flour
		• Cakes	• 1kg (total weight)	• 1 min max	
		• Icing	• 800g icing sugar 4 egg whites	• 30 sec	
	• Kneading	• Bread dough	• 600g flour 400ml water	• 20 sec (+ 2 min rest)	• Max volume = weight of flour • Do not over process
• Slicing Disc (15)	• Thick and thin slicing	• Vegetables, cheese, fruit, potatoes, chocolate			
• Grating Disc (16)	• Thick and thin shredding	• Vegetables, cheese, fruit, potatoes, chocolate			

- **WARNING:** Do not process for longer than the recommended time.
- **WARNING:** Do not exceed the recommended maximum volumes.
- **WARNING:** Always hold the blades by the centre grip.
- **WARNING:** To protect the Food Processor from overload there is a thermal switch fitted. If the Food Processor stops working whilst in use, first check that the Lid (2) and Bowl (4) are correctly fitted. If this is correct and the Food Processor is still not working, switch off, unplug from the mains and allow to cool for 35 minutes.

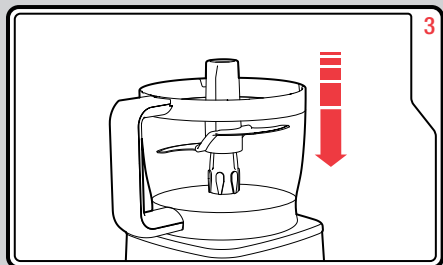
Using the Processor Blade



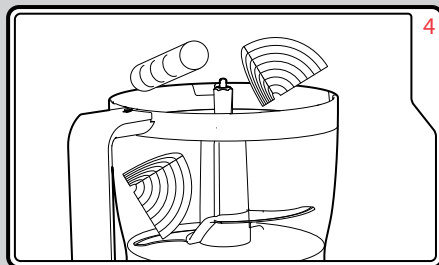
Place the Bowl (4) onto the Main Unit (6). Twist clockwise so the Handle (3) is facing you to lock the Bowl in place.



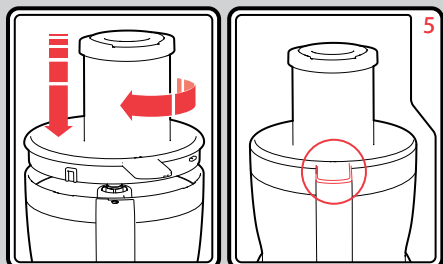
Place the Spindle (5) in the Bowl.



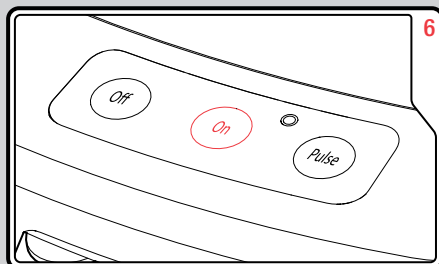
Place the Chopping Blade (13) or Kneading Blade (14) on the Spindle



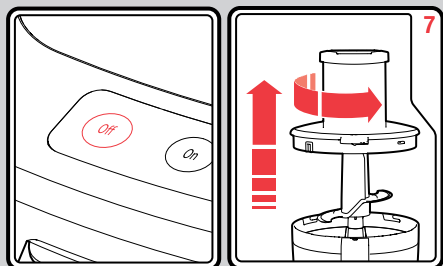
Add the food or ingredients to the Bowl.



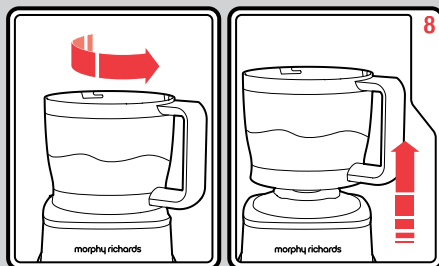
Place the Lid (2) onto the Bowl, twist in a clockwise direction. When locked in place, the tab should sit on top of the Handle.



Press the On Button (10). The processor will not start if the Bowl or Lid are unlocked or in the wrong position.

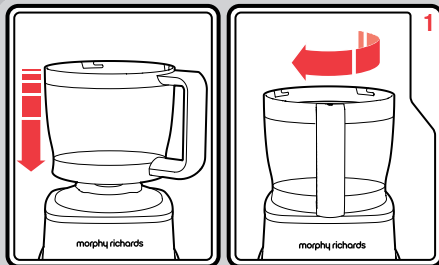


When finished, press the Off Button (9). Remove the Lid, Blade and Spindle.

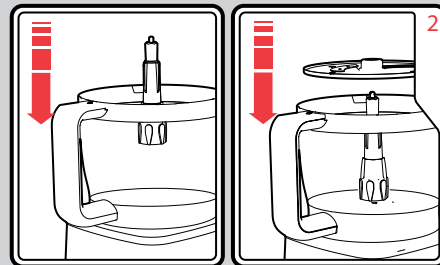


Twist the Handle anti clockwise to unlock the Bowl from the Main Unit.

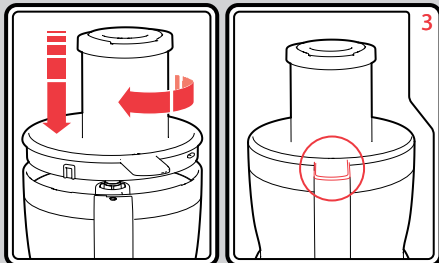
Using the Discs



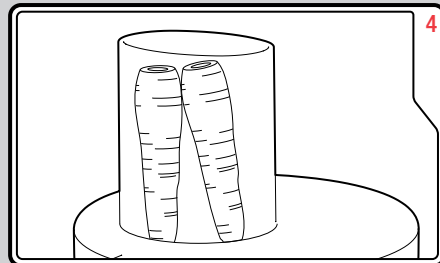
Place the Bowl (4) onto the Main Unit (6). Twist clockwise so the Handle (3) is facing you to lock the Bowl in place.



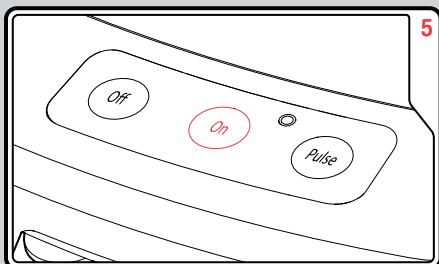
Place the Spindle (5) in the Bowl and then place the desired Disc (15) or (16) on the Spindle. See 'Discs' for more information.



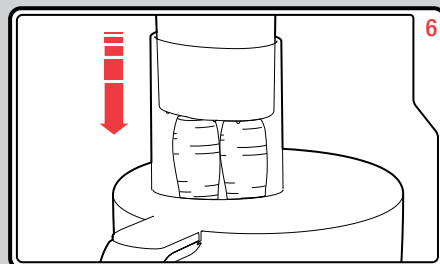
Place the Lid (2) onto the Bowl twist clockwise so the tab sits on top of the handle.



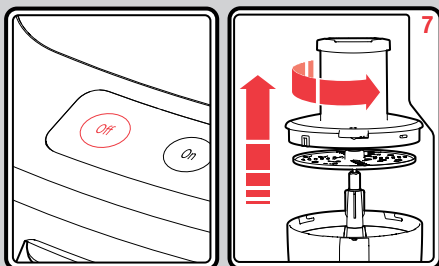
Place the food into the Feed Tube (1).



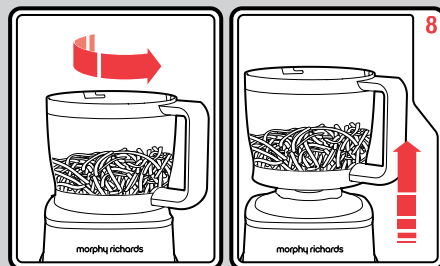
Press the On Button (10). The processor will not start if the Bowl or Lid are unlocked or in the wrong position.



Gently press down on the food using the Pushers (7),(8).



When finished, press the Off Button (9). Remove the Lid, Disc and Spindle.



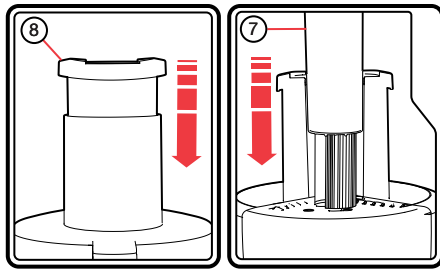
Twist the Handle anticlockwise to unlock from the Main Unit.

WARNING

WARNING: The Blades on the attachments contained with this processor are very sharp. Care must be taken when handling during use or cleaning.

Pushers (7), (8)

The processor comes with two Pushers for use when shredding or slicing with the Discs.



When slicing long thin objects such as carrots, courgettes or celery, leave the Large Pusher (8) in the Feed Tube and place the food in the centre hole of the Pusher. During use, use the Small Pusher (7) to press the food into the disc.

Pulse Button

The Pulse Button (11) on the processor allows you to run the processor on quick intermittent bursts. This is ideal when using the Chopping Blade (13) to process hard vegetables as it allows the contents of the Bowl (4) to fall back into the path of the Chopping Blades.

Discs (15), (16)

The processor comes with two discs for grating, slicing, chopping and shredding foods. These discs are double sided, each with a side for both thick and thin slicing / shredding. When placing the disc within the processor for use, place the side of the disc you wish to use facing up.

Tips

- For coarser chopping, use the pulse button for a few seconds and monitor food texture.
- Pre-cut larger pieces to make them fit into the feed tube. When chopping hard foods (eg. meat or cheese) cut into 1 inch / 2.5cm cubes.
- For shredding, place food horizontally into the feed tube, for slicing, place the food vertically.
- When slicing carrots, place 2 at a time in the feeder tube to keep upright.
- Your Food Processor is not designed to grind coffee beans, bones, ice, liquify vegetables or slice cooked eggs or meat.
- If any plastic parts should discolor due to the types of food processed, clean with a little vegetable oil.

Care and cleaning

1. Switch the processor off and unplug from the electrical outlet.
2. All accessories and processor tools can be washed in hot soapy water except for the Main Unit (6).

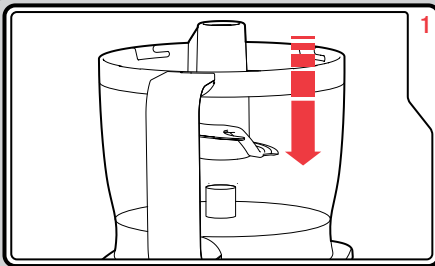
WARNING: Extreme care must be taken when washing the metal blades as these are extremely sharp.

3. Clean the Main Unit with a damp cloth.

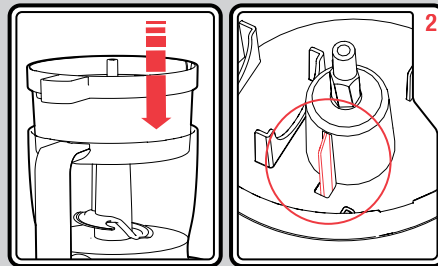
WARNING: Always unplug the appliance before cleaning.

Storage

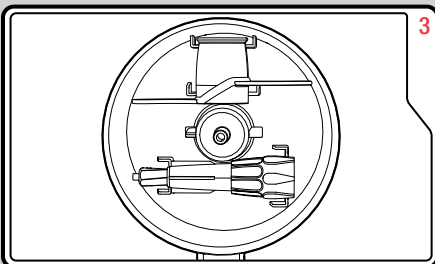
Your processor is designed for neat compact storage of all attachments within the processor bowl. To store the attachments follow the following instructions.



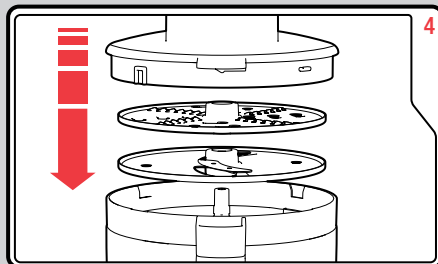
Attach the Bowl (4) to the Main Unit (6) as normal. Place the Chopping Blade (13) in the Bowl.



Place the Tool Storage (12) in the Bowl. Ensure the lip on the Chopping Blade shaft is placed in the slot, locking the blade in place.



Place the Spindle (5) and Dough Blade (14) in the Tool Storage.



Place the Discs (15), (16) on the Tool Storage. Place the Lid (2) on the Bowl.

Contact us

Helpline

If you are having a problem with your appliance, please call our Helpline, as we are more likely to be able to help than the store you purchased the item from.

Please have the product name, model number and serial number to hand when you call to help us deal with your enquiry quicker.

UK Helpline: 0844 871 0960

IRE Helpline: 1800 409 119

Spares: 0844 873 0726

Talk To Us

If you have any questions or comments, or want some great tips or recipe ideas to help you get the most out of your products, join us online:

Blog: www.morphyrichards.co.uk/blog

Facebook: www.facebook.com/morphyrichardsuk

Twitter: www.twitter.com/loveyourmorphy

Website: www.morphyrichards.com

Health and Safety

The use of any electrical appliance requires the following common sense safety rules.

Primarily there is danger of injury or death and secondly the danger of damage to the appliance. These are indicated in the text by the following two conventions:

WARNING: Danger to the person!

IMPORTANT: Damage to the appliance!

In addition, we offer the following safety advice.

Location

- This appliance is intended to be used in household and similar applications such as:
farm houses;
by clients in hotels, motels and other residential type environments;
bed and breakfast type environments.
It is not suitable for use in staff kitchen areas in shops, offices and other working environments.
- Do not use outdoors or in a bathroom.
- Always locate your appliance away from the edge of the worktop.
- Do not place a bowl when used with the appliance on a highly polished wooden surface as damage may occur to the surface.
- Do not place the appliance on or near a hot surface, such as a hot plate or radiant rings or near a naked flame.

Mains cable

- Do not let the mains cable hang over the edge of the worktop where a child could reach it.
- Do not let the lead run across an open space e.g. between a low socket and a table.
- Do not let the cable run across a cooker or other hot area which might damage the cable.
- The mains cable should reach from the socket to the base unit without straining the connections.
- The power cord cannot be replaced. Contact Morphy Richards for advice.

Personal safety

- Avoid touching moving parts. Keep hands, hair and clothing, and utensils away from the hand mixer attachment blades during operation, to prevent personal injury and/or damage to the appliance.
- **WARNING:** To protect against the risk of electric shock, NEVER immerse the appliance body in water or in any other liquid and always ensure the electrical connections are kept dry.
- This appliance is not intended for use by persons (including children) with reduced physical, sensory or mental capabilities, or lack of experience and knowledge, unless they have been given supervision or instruction concerning the use of the appliance by a person responsible for their safety.

Children

- Children do not understand the dangers associated with operating electrical appliances. Never allow children to use this appliance.
- Children should be supervised to ensure that they do not play with the appliance.
- Teach children to be aware of dangers in the kitchen, warn them of the dangers of reaching up to areas where they cannot see properly or should not be reaching.

Other safety considerations

- Do not operate any appliance with a damaged cord or plug or after the appliance malfunctions or has been damaged in any manner.
- The use of attachments or tools not recommended or sold by Morphy Richards may cause fire, electric shock or injury.
- Do not use the appliance for anything other than it's intended purpose.
- Unplug from the outlet when not in use, or when left unattended, and before assembling, disassembling or cleaning.

Product specific safety

- **WARNING:** The blender blades are very sharp. Handle with care when using and cleaning.
- **WARNING:** To protect against fire, electric shock and personal injury, do not immerse the cord, plug or mixer in water or other liquid.
- Do not clean the attachments under running water while they are in position.
- Make sure the blender is switched off before connecting to or disconnecting from the mains supply and when left unattended.

Electrical requirements

Check that the voltage on the rating plate of your appliance corresponds with your house electricity supply which must be A.C. (Alternating Current).

If the socket outlets in your home are not suitable for the plug supplied with this appliance, the plug should be removed and the appropriate one fitted.

WARNING : The plug removed from the mains lead, if severed, must be destroyed, as a plug with a bared flexible cord is hazardous if engaged into a live socket outlet.

Should the fuse in the mains plug require changing, a 13 amp BS1362 fuse must be fitted.



Notes

Lined area for notes, consisting of two columns of horizontal lines.





Notes

Lined writing area consisting of two vertical columns of horizontal lines, intended for handwritten notes.



FP48911 MUK Rev 1 04/12

Registering your 2 year guarantee

Your standard one year guarantee is extended for an additional 12 months when you register the product within 28 days of purchase with Morphy Richards. If you do not register the product with Morphy Richards within 28 days, your product is guaranteed for 1 year. To validate your 2 year guarantee register with us online at

www.morphyrichards.co.uk

Or call our customer registration line

UK 0844 871 0962

IRE 1800 409 119

N.B. Each qualifying product needs to be registered with Morphy Richards individually.

Please note that the 2 year guarantee is only available in the UK and Ireland. Please refer to the one year guarantee for more information.

Your 1 year guarantee

It is important to retain the retailer's receipt as proof of purchase. Staple your receipt to this back cover for future reference.

Please quote the following information if the product develops a fault. These numbers can be found on the base of the product.

Model no.

Serial no.

All Morphy Richards products are individually tested before leaving the factory. In the unlikely event of any appliance proving to be faulty within 28 days of purchase, it should be returned to the place of purchase for it to be replaced.

If the fault develops after 28 days and within 12 months of original purchase, you should contact the Helpline number quoting Model number and Serial number on the product, or write to Morphy Richards at the address shown.

You may be asked to return a copy of proof of purchase.

Subject to the exclusions set out below (see Exclusions), the faulty appliance will then be repaired or replaced as appropriate and dispatched usually within 7 working days of receipt.

If, for any reason, this item is replaced or repaired during the 1 year guarantee period, the guarantee on the new item will be calculated from original purchase date. Therefore it is vital to retain your original till receipt or invoice to indicate the date of initial purchase.

To qualify for the 1 year guarantee, the appliance must have been used according to the instructions supplied. For example, crumb trays should have been emptied regularly.

Exclusions

Morphy Richards shall not be liable to replace or repair the goods under the terms of the guarantee where:

- 1 The fault has been caused or is attributable to accidental use, misuse, negligent use or used contrary to the manufacturer's recommendations or where the fault has been caused by power surges or damage caused in transit.
 - 2 The appliance has been used on a voltage supply other than that stamped on the products.
 - 3 Repairs have been attempted by persons other than our service staff (or authorised dealer).
 - 4 The appliance has been used for hire purposes or non domestic use.
 - 5 The appliance is second hand.
 - 6 Morphy Richards reserves the right not to carry out any type of servicing under the guarantee at its discretion
 - 7 Plastic filters for all Morphy Richards kettles and coffee makers are not covered by the guarantee.
 - 8 Batteries and damage from leakage are not covered by the guarantee.
- This guarantee does not confer any rights other than those expressly set out above and does not cover any claims for consequential loss or damage. This guarantee is offered as an additional benefit and does not affect your statutory rights as a consumer. Morphy Richards products are intended for household use only. See usage limitations within the location safety instructions.

Disclaimer

Morphy Richards has a policy of continuous improvement in product quality and design. The company, therefore reserves the right to change the specification of its models at any time.



For electrical products sold within the European Community. At the end of the electrical products useful life, it should not be disposed of with household waste.

Please recycle where facilities exist. Check with your Local Authority or retailer for recycling advice in your country

**IF YOU ARE HAVING A PROBLEM
WITH ONE OF OUR PRODUCTS, CALL
OUR HELPLINE:**

**UK: 0844 871 0960
EIRE: 1800 409 119
SPARES: 0844 873 0726**

morphy richards

The After Sales Division
Morphy Richards Ltd
Mexborough, South Yorkshire,
England, S64 8AJ

Helplines (office hours)
UK 0844 871 0960
Spare Parts 0844 873 0726
Republic of Ireland 1800 409 119
www.morphyrichards.com

