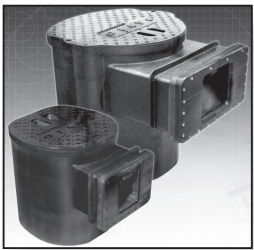


## Customer Service Information



Savio Engineering, Inc.  
Albuquerque, New Mexico USA  
<http://www.savio.cc> • email: [support@savio.cc](mailto:support@savio.cc)

**Innovative, precision engineered solutions**  
Advanced water gardening products for healthy, clean living ponds.



Skimmerfilters®



Livingponds® Filters



Pond Packages®



Uvinex™ system



Water Master™ Pumps



Waterfall Well™



Springflo Filter Media™



FilterWeirs™



Radiance™ Lighting



Black Foam



Pond Free® Packages

# SAVIO RADIANCE™ outdoor lighting

LED



HALOGEN



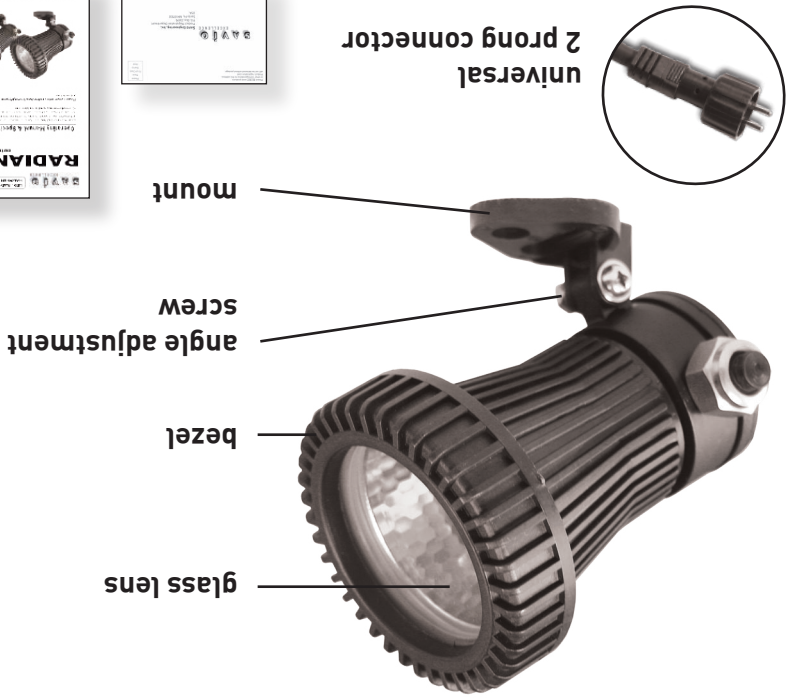
07-SV-079

Please review entire instructions thoroughly prior to installation.

OPERATING MANUAL RAD1000 • RAD1020 • RAD2000 • RAD2020

## COMPONENTS

Savio Radiance Lighting is suitable for outdoor landscape illumination or underwater use in ponds, fountains, streams. Radiance lights are designed to be used with Savio's 20 watt transformer or can be connected to any approved 12V AC transformer approved for outdoor use.



## ACCESSORIES

## Important Safety Instructions

Water and electricity can be deadly when combined. This unit can pose significant risk of bodily harm if used incorrectly. Please read and follow these extremely important safety and handling instructions for your Savio Radiance Lighting:

### WARNING - ELECTRICAL SHOCK HAZARD.



- Always disconnect power from lights before servicing.
- Savio Radiance Lighting must be used with a 12V AC transformer with wattage capacity greater than the sum of all light wattages on the circuit. *(example: Three 20 Watt lights on the same circuit would require a transformer of at least 60 Watts or greater.)*
- Cable connections should ALWAYS remain above water.
- Unplug lamp and allow to cool before replacing bulb. Do not operate lamp unless the housing is intact and without the glass lens is in place.
- Follow all local electrical codes and NEC guidelines.

## Warranty (Send in your warranty card)

To activate your warranty send in the enclosed warranty card or visit the Savio website ([www.savio.cc/warranty/](http://www.savio.cc/warranty/)). Savio Engineering, Inc. provides a manufacturer's limited warranty of 1 year from original purchase date. Warranty is non-transferable. Within the warranty period SAVIO will repair materials with faults caused by improper use, installation and handling of the device or as a result of wear and tear. Warranty is void if the product is not used in accordance with instructions. For warranty claims, please contact your dealer. Savio is not responsible for damage resulting from shipping. \*Warranty is void if cord is removed or cut. Halogen bulbs are considered normal wear items and are not covered by warranty.

## Installation



Examine all parts while unpacking. Carefully inspect for damage incurred during shipping. If the unit appears damaged, return it to your dealer for replacement.

Radiance Lights are designed to be used with a 12V AC outdoor transformer. Low voltage transformers come in a variety of wattages to accommodate your outdoor lighting needs. These transformers are generally available at most hardware and specialty lighting stores. If the transformer has a timer, set the timer per instructions included with the unit for the desired ON and OFF times.

### Calculating Wattage

When using multiple lights with a transformer, the transformer must have a wattage capacity of at least of the sum total of all the lights on the circuit. (Example: Three 20W lights would require a transformer of at least 60 Watts or greater.) Failure to observe this recommendation can result in poor performance and risk of fire or permanent damage to equipment.

### EXAMPLE:

#### A 20 Watt Transformer can support:

##### RADIANCE Halogen

(RAD2000 or RAD2020)



x 1

##### RADIANCE LED Large

(RAD1020)



x 2

##### RADIANCE LED Small

(RAD1000)

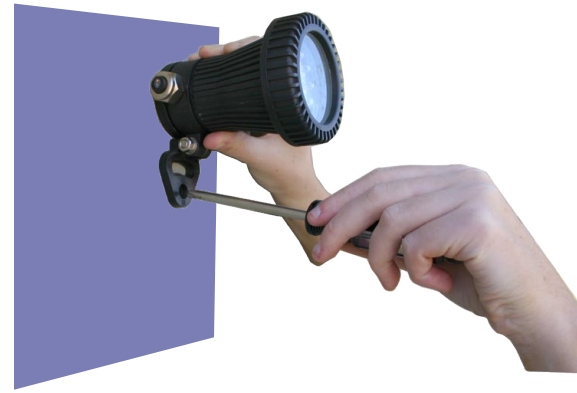


x 3

\* Use of more than one light requires a splitter. (RAD5P03) Sold Separately.

**Warning!** These lights are not designed or approved for use in swimming pools, spas, and other human activity areas.

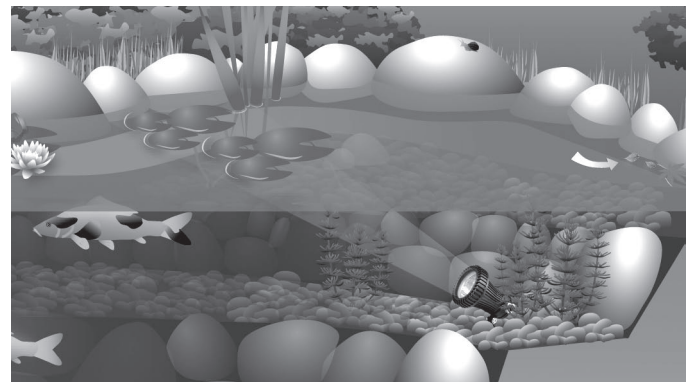
## For Outdoor Use



Mount the lighting fixture in the desired outdoor location. The adjustable bracket is designed to be attached with screws to a post or siding.

**Warning!** When Halogen Lights are used above water, a minimum distance of 20 inches from combustible materials must be observed.

## For Underwater Use

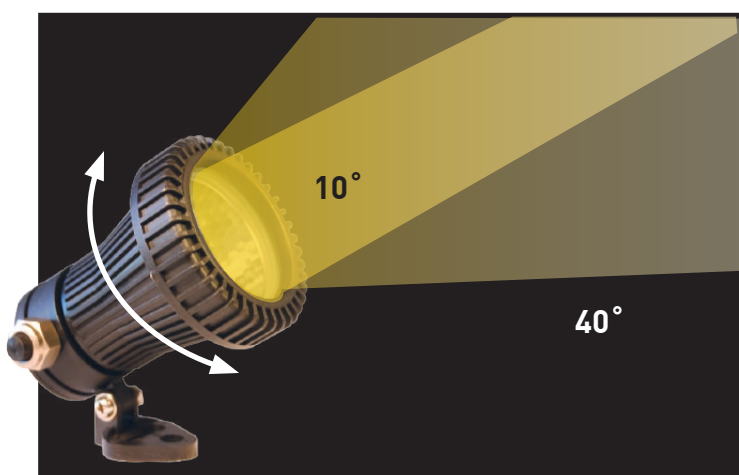
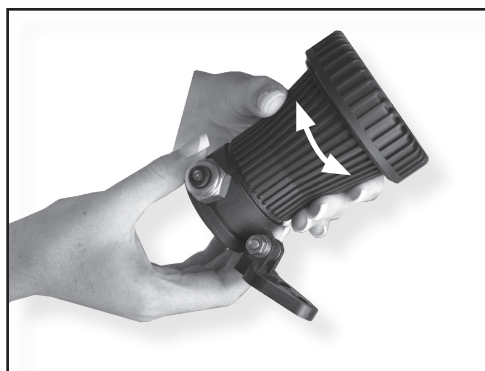


Placing a light in your pond will enhance the beauty of the water feature. Often the best results can be achieved using lights to illuminate a specific portion of a water feature, such as a waterfall cascade, plant grouping or underwater element. If desired, you can attach the light to a ballast object to create a sturdy base.

**When using lights in an underwater environment always use a GFCI protected circuit to prevent the risk of electrocution.**

## Optional Features

(RAD2020 Only)



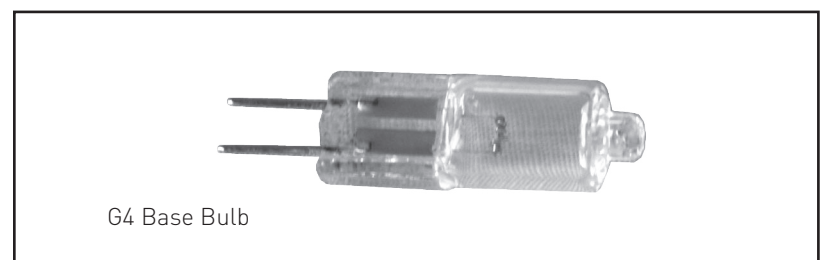
**RAD2020 Halogen Light** has a variable beam that can be adjusted in size from 10° to 40°. To change the focus of the beam, hold the rear of the light and twist the housing of the light firmly in a clockwise or counterclockwise direction.

## Bulb Replacement

### Bulb Replacement (LED)

There are no user serviceable parts in Savio LED lighting fixtures. LED lights are extremely long lived under normal use. If a Savio LED light should fail within the warranty period, return it for repair or replacement.

### Bulb Replacement (HALOGEN)



G4 Base Bulb

12 Volt 20 Watt bulbs are available at any local hardware store.

### To replace:

1. Disconnect the lamp or transformer from the power source. Allow the unit to cool before replacing bulb, if necessary.
2. Remove the lamp bezel by unscrewing in a counterclockwise direction.
3. Remove the glass lens and seal.
4. Remove the bulb by pulling from its socket.
5. Installation is the reverse of removal.

**Oil from your skin can damage halogen lamps, avoid touching the new bulb during installation.**