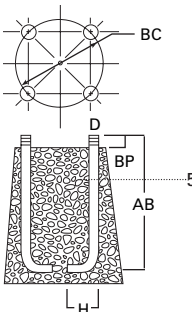
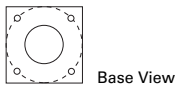
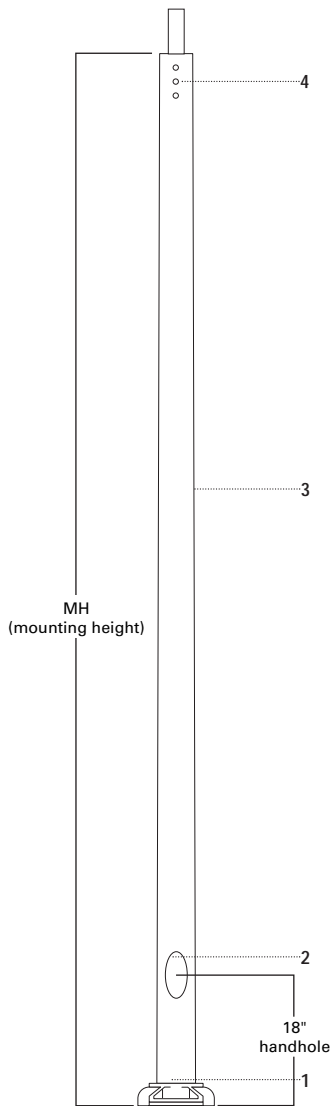


# RTA ROUND TAPERED ALUMINUM

10'—40' MOUNTING HEIGHT



## SPECIFICATION FEATURES

- 1 ··· Cast aluminum alloy shoe base with aluminum alloy bolt covers or base cover dependent upon base type.
- 2 ··· Flush reinforced 2 3/8" x 4 1/2" for 4" shafts. Hand hole assembly with internal reinforcing frame. 3" x 5" for 5" and 6" shafts, 4" x 6" for 7", 8", 10" shafts. Ground lug located opposite hand hole opening drilled & tapped for 3/8" 16NC-2 grounding screw.
- 3 ··· Tapered aluminum lighting shaft with polished finish.
- 4 ··· Drilled or Tenon (specify).
- 5 ··· Anchor bolt per ASTM A576 with (1) nut, (1) flat washer, and (2) shims. Nuts, washers and threaded portion of bolt are hot dip galvanized.

## FOUR BOLT ANCHORAGE [See ordering information]

- BC=Bolt Circle
- BP=Bolt Projection
- AB=Bolt Dimensions
- D=Bolt Diameter
- H=Bolt Dimensions

## FINISH COLORS [See ordering information. Other finish colors available.]

- B=Clear Anodized
- C=Dark Bronze Anodized
- D=Black Anodized
- E=Medium Bronze Anodized
- F=Dark Bronze Powder Coat
- V=Grey Powder Coat
- W=White Powder Coat
- X=None (natural aluminum)
- Y=Black Powder Coat

**WARNING:** THE USE OF UNAUTHORIZED ACCESSORIES SUCH AS BANNERS, SIGNS OR PENNANTS FOR WHICH THE POLE WAS NOT DESIGNED FOR VOIDS THE COOPER LIGHTING WARRANTY AND MAY RESULT IN POLE FAILURE CAUSING SERIOUS INJURY OR PROPERTY DAMAGE. COOPER LIGHTING'S POLE WARRANTY IS ALSO VOIDED IF LUMINAIRE IS NOT INSTALLED AT TIME OF POLE INSTALLATION.

ORDERING INFORMATION

SAMPLE NUMBER: RTA5M20NA

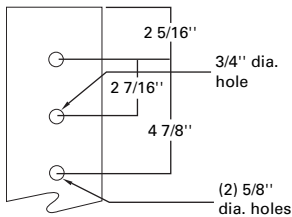
|       |         |          |                      |                |                       |           |        |                         |                        |             |                                |
|-------|---------|----------|----------------------|----------------|-----------------------|-----------|--------|-------------------------|------------------------|-------------|--------------------------------|
| Round | Tapered | Aluminum | Shaft Dia. (at base) | Wall Thickness | Mounting Height (ft.) | Base Type | Finish | Fixture Mounting & Type | No. & Location of Arms | Arm Lengths | Accessories (Vibration Damper) |
| R     | T       | A        | 5                    | M              | 20                    | N         | A      | X                       | X                      | X           | V                              |

| Mtg. Height (Ft.) | Catalog Number <sup>3</sup> | Wall Thickness (In.) | Base Dia. or Square (In.) | Shaft Taper (In.) | Bolt Proj. (In.) | Bolt Circle Dia. (In.) | Anchor Bolt D x AB x H (In.) | Net. Wt. (Lbs.) | EPA (Sq. Ft.) <sup>2,4</sup> At Pole Top |      |      |      | EPA (Sq. Ft.) <sup>2,4</sup> 18" Above Pole Top |      |      |      | Max. Fixture Load Include |
|-------------------|-----------------------------|----------------------|---------------------------|-------------------|------------------|------------------------|------------------------------|-----------------|--|------|------|------|---|------|------|------|---------------------------|
|                   |                             |                      |                           |                   |                  |                        |                              |                 | 70                                       | 80   | 90   | 100  | 70  | 80   | 90   | 100  |                           |
| MH                |                             |                      | S                         | B                 | BP               | BC                     | AB                           |                 |  |      |      |      |   |      |      |      |                           |
| 10                | RTA4T10NA                   | .125                 | 9 1/4                     | 4 x 3             | 1 7/8            | 6 3/4                  | 3/4 x 17 x 3                 | 22              | 14.9                                     | 11.0 | 8.4  | 6.6  | 12.6  | 9.4  | 7.1  | 5.6  | 100                       |
| 12                | RTA4T12NA                   | .125                 | 9 1/4                     | 4 x 3             | 1 7/8            | 6 3/4                  | 3/4 x 17 x 3                 | 25              | 11.3                                     | 8.2  | 6.1  | 4.6  | 9.8   | 7.2  | 4.3  | 4.0  | 100                       |
| 15                | RTA4T15NA                   | .125                 | 9 1/4                     | 4 x 3             | 1 7/8            | 6 3/4                  | 3/4 x 17 x 3                 | 30              | 7.7                                      | 5.4  | 3.8  | 2.7  | 6.8   | 4.8  | 3.4  | 2.4  | 100                       |
| 15                | RTA5T15NA                   | .125                 | 10 1/2                    | 5 x 3             | 1 7/8            | 7 3/4                  | 3/4 x 17 x 3                 | 33              | 13.6                                     | 9.9  | 7.4  | 5.6  | 12.2  | 8.8  | 6.6  | 5.0  | 100                       |
| 18                | RTA5T18NA                   | .125                 | 10 1/2                    | 5 x 3             | 1 7/8            | 7 3/4                  | 3/4 x 17 x 3                 | 39              | 9.9                                      | 6.9  | 4.9  | 3.6  | 9.0   | 6.3  | 4.5  | 3.3  | 100                       |
| 18                | RTA6L18AA                   | .156                 | 10 1/4                    | 6 x 4             | 2 1/8            | 9 3/8                  | 3/4 x 17 x 3                 | 57              | 19.9                                     | 14.6 | 11.1 | 8.8  | 18.2  | 13.3 | 10.1 | 8.0  | 100                       |
| 20                | RTA5T20NA                   | .125                 | 9 1/4                     | 5 x 3             | 1 7/8            | 8 1/2                  | 3/4 x 17 x 3                 | 43              | 8.0                                      | 5.4  | 3.7  | 2.5  | 7.3   | 4.9  | 3.4  | 2.3  | 100                       |
| 20                | RTA6L20AA                   | .156                 | 10 1/4                    | 6 x 4             | 2 1/8            | 9 3/8                  | 3/4 x 17 x 3                 | 64              | 16.5                                     | 11.9 | 8.9  | 7.0  | 15.6  | 10.9 | 8.2  | 6.4  | 150                       |
| 25                | RTA6L25AA <sup>1</sup>      | .156                 | 10 1/4                    | 6 x 4             | 2 1/8            | 9 3/8                  | 3/4 x 17 x 3                 | 81              | 10.4                                     | 7.8  | 5.0  | 3.7  | 9.7   | 6.6  | 4.6  | 3.5  | 150                       |
| 25                | RTA8L25AA <sup>1</sup>      | .156                 | 11 5/8                    | 8 x 4 1/2         | 2 3/4            | 11 1/2                 | 1 x 36 x 4                   | 106             | 23.3                                     | 17.2 | 13.2 | 10.4 | 21.7  | 16.0 | 12.3 | 9.7  | 200                       |
| 30                | RTA7L30AA <sup>1</sup>      | .156                 | 10 5/8                    | 7 x 4             | 2 3/4            | 10 1/2                 | 1 x 36 x 4                   | 108             | 11.0                                     | 7.5  | 5.3  | 4.0  | 10.4  | 7.1  | 4.0  | 3.7  | 150                       |
| 30                | RTA8L30AA <sup>1</sup>      | .156                 | 11 5/8                    | 8 x 4 1/2         | 2 3/4            | 11 1/2                 | 1 x 36 x 4                   | 117             | 16.4                                     | 11.8 | 8.9  | 6.9  | 15.4  | 11.1 | 8.4  | 6.5  | 200                       |
| 30                | RTA0L30AA <sup>1</sup>      | .156                 | 14 1/2                    | 10 x 6            | 2 7/8            | 14 1/2                 | 1 x 36 x 4                   | 152             | 30.5                                     | 22.8 | 17.6 | 13.8 | 28.8  | 21.6 | 16.6 | 13.0 | 250                       |
| 35                | RTA8L35AA <sup>1</sup>      | .156                 | 11 5/8                    | 8 x 4 1/2         | 2 3/4            | 11 1/2                 | 1 x 36 x 4                   | 140             | 11.5                                     | 7.9  | 5.8  | 4.3  | 10.9  | 7.5  | 5.5  | 4.1  | 150                       |
| 35                | RTA0L35AA <sup>1</sup>      | .156                 | 14 1/2                    | 10 x 6            | 2 7/8            | 14 1/2                 | 1 x 36 x 4                   | 180             | 23.3                                     | 17.3 | 13.1 | 10.0 | 22.2  | 16.4 | 12.5 | 9.5  | 200                       |
| 40                | RTA8M40AA <sup>1</sup>      | .188                 | 11 5/8                    | 8 x 4 1/2         | 2 3/4            | 11 1/2                 | 1 x 36 x 4                   | 210             | 11.0                                     | 7.5  | 5.3  | 3.9  | 10.6  | 7.1  | 5.1  | 3.7  | 100                       |
| 40                | RTA0L40AA <sup>1</sup>      | .156                 | 14 1/2                    | 10 x 6            | 2 7/8            | 14 1/2                 | 1 x 36 x 4                   | 209             | 17.9                                     | 13.0 | 9.6  | 7.1  | 17.2  | 12.5 | 9.2  | 6.8  | 150                       |

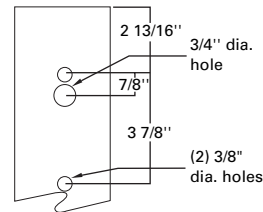
NOTES: 1 Factory installed vibration dampeners. 2 Where higher EPA/wind speed capability or mounting height is required, other shaft dimensions and/or wall thickness are available. consult Cooper Lighting representative for pricing and lead times. The above E.P.A. capacities are based on loading from (1994) and pole drag coefficients from (2001) American Association of State Highway and Transportation Officials Specification. 3 Catalog item includes one set of anchor bolts, single nuts and (2) leveling shims. 4 EPAs based on shaft properties with wind normal to flat. EPAs calculated using base wind velocity as indicated plus 30% gust factor.

DRILLING PATTERN

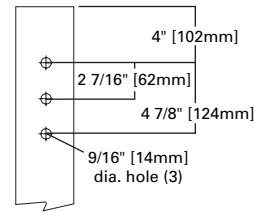
Type "M" [RCL, Landau, Galleria and Vision]



Type "E" [Concourse III]



Type "Z" [Credenza and Cirrus]



MACHINING FOR RECTANGULAR ARMS [Add as suffix]

| Designation Letter & Number | Designation Letter & Number | Designation Letter & Number | Quantity & Location |
|-----------------------------|-----------------------------|-----------------------------|---------------------|
| M1                          | E1                          | Z1                          | Single              |
| M2                          | E2                          | Z2                          | 2 @ 180°            |
| M3                          | E3                          | Z3                          | 3 @ 120°            |
| M4                          | E4                          | Z4                          | 4 @ 90°             |
| M5                          | E5                          | Z5                          | 2 @ 90°             |

NOTES: Refer to Fixture Drilling Options on page 160.

MOUNTING OPTIONS [Add as suffix]

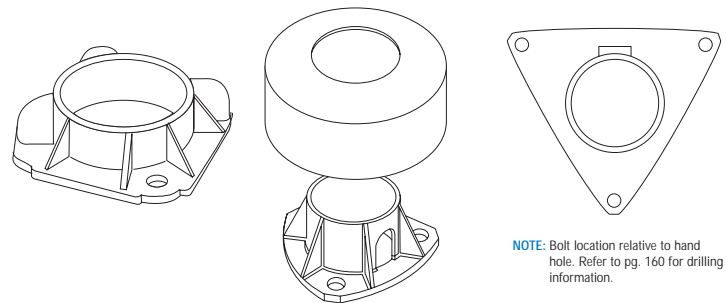
| Fixed Tenon | Designation Number | O.D. (In.) | Length (In.) |
|-------------|--------------------|------------|--------------|
|             | 1                  | 2 3/8      | 3 1/2        |
|             | 2                  | 2 3/8      | 4            |
|             | 5                  | 3          | 4            |
|             | 4                  | 4          | 6            |

ACCESSORIES [Order separately]

- C=Convenience Outlet
- E=GFI Convenience Outlet
- F=Vibration Pad
- G=Ground Lug
- V=Vibration Damper
- B=Base Cover ("A" Base Only)

STANDARD BASE [Round Aluminum Pole Only]

- TYPE A 6", 7", 8" or 10"
- TYPE N [Standard with base cover] 4", 5", or 6"



NOTE: Specifications and dimensions subject to change without notice.