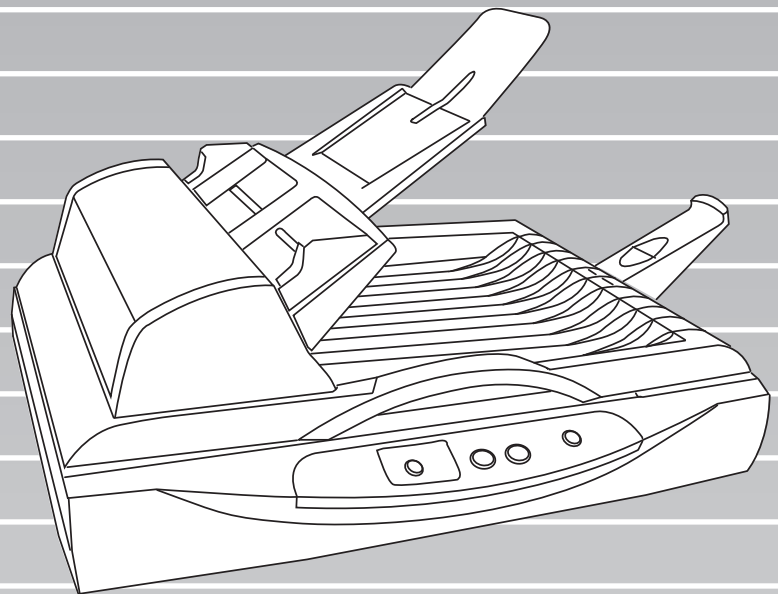




P3PC-1592-05ENZ0

fi-5015C Image Scanner

Operator's Guide



FUJITSU

CONTENTS

■ Regulatory Information	iii
■ Note, Liability	v
■ Safety Precautions	viii
 Chapter 1 NAME OF PARTS.....	1
1.1 Units.....	2
1.2 Operator Panel.....	5
 Chapter 2 BASIC SCANNER OPERATIONS.....	7
2.1 Turning ON/OFF the Scanner	8
2.2 Loading Documents on ADF	12
2.3 Loading Document on Flatbed.....	17
2.4 Scanning Documents.....	19
2.5 How to use the Scanner Driver.....	22
2.6 Image Scanning Application.....	36
 Chapter 3 MAINTENANCE.....	37
3.1 How to clear the paper jam	38
3.2 Cleaning.....	39
3.3 Replacing Consumable.....	44

Chapter 4	TROUBLESHOOTING	53
4.1	Error Indications in the Function Number Display	54
4.2	Troubleshooting	56
APPENDIX A	SCANNER SPECIFICATIONS.....	AP-1
APPENDIX B	Using [Scan] or [Send to] button	AP-3
APPENDIX C	GLOSSARY OF TERMS.....	AP-7
INDEX	IN-1

INTRODUCTION

Thank you for purchasing the fi-5015C Color Scanner.

This document describes how to handle fi-5015C and basic operation methods. Before you start using fi-5015C be sure to thoroughly read this manual to ensure correct use.

This document describes the basic operation methods to perform scanning by using ScandAll PRO.

The version of ScandAll PRO bundled with this product is subject to change without notice, in which case the screenshots captured in this document may differ from the actual displayed image.

For more information about ScandAll PRO, refer to the separate [ScandAll PRO V2.0 User's Guide].

■Regulatory Information

FCC Declaration

This equipment has been tested and found to comply with the limits for a Class B digital device, pursuant to Part 15 of the FCC Rules. These limits are designed to provide reasonable protection against harmful interference in a residential installation. This equipment generates, uses, and can radiate radio frequency energy and, if not installed and used in accordance with the instruction manual, may cause harmful interference to radio communications. However, there is no guarantee that interference will not occur in a particular installation. If this equipment does cause harmful interference to radio or television reception, which can be determined by turning the equipment off and on, the user is encouraged to try to correct the interference by one or more of the following measures:

- Reorient or relocate the receiving antenna.
- Increase the separation between the equipment and receiver.
- Connect the equipment into an outlet on a circuit different from that to which the receiver is located.
- Consult your dealer or an experienced radio/TV technician.

FCC warning: Changes or modifications not expressly approved by the party responsible for compliance could void the user's authority to operate the equipment.

NOTICE

The use of a shielded interface cable is required to comply with the Class B limits of Part 15 of FCC rules.
The length of the AC cable must be 3 meters (10 feet) or less.

Canadian DOC Regulations

This digital apparatus does not exceed the Class B limit for radio noise emissions from digital apparatus set out in the Radio interference Regulations of the Canadian Department of Communications.

This Class B digital apparatus complies with Canadian ICES-003.

Le présent appareil numérique n'émet pas de parasites radioélectriques dépassant les limites applicables aux appareils numériques de la classe B et prescrites dans le Règlement sur le brouillage radioélectrique dictées par le Ministère des Communications du Canada.

Cet appareil numérique de la classe B est conforme à la norme NMB-003 du Canada.

Bescheinigung des Herstellers / Importeurs

Für den fi-5015C wird folgendes bescheinigt:

- In Übereinstimmung mit den Bestimmungen der EN45014(CE) funktentstört
- Maschinenlärminformationsverordnung 3.GPSGV: Der höchste Schalldruckpegel beträgt 70 dB (A) oder weniger, gemäß EN ISO 7779.

ENERGY STAR®

PFU Limited, a Fujitsu company, has determined that this product meets the ENERGY STAR® guidelines for energy efficiency.

ENERGY STAR® is a registered trademark of the United States.



■Note, Liability

READ ALL OF THIS MANUAL CAREFULLY BEFORE USING THIS PRODUCT. IF THIS PRODUCT IS NOT USED CORRECTLY, UNEXPECTED INJURY MAY BE CAUSED TO USERS OR BYSTANDERS.


Also, keep this manual in a safe place so that it can be easily referred to during use of this product.

While all efforts have been made to ensure the accuracy of all information in this manual, PFU assumes no liability to any party for any damage caused by errors or omissions or by statements of any kind in this manual, its updates or supplements, whether such errors are omissions or statements resulting from negligence, accidents, or any other cause. PFU further assumes no liability arising from the application or use of any product or system described herein; nor any liability for incidental or consequential damages arising from the use of this manual. PFU disclaims all warranties regarding the information contained herein, whether expressed, implied, or statutory.

Use in High-safety Applications

This product has been designed and manufactured on the assumption that it will be used in office, personal, domestic, regular industrial, and general-purpose applications. It has not been designed and manufactured for use in applications (simply called "high-safety applications" from here on) that directly involve danger to life and health when a high degree of safety is required, for example, in the control of nuclear reactions at nuclear power facilities, automatic flight control of aircraft, air traffic control, operation control in mass-transport systems, medical equipment for sustaining life, and missile firing control in weapons systems, and when provisionally the safety in question is not ensured. The user should use this product with adopting measures for ensuring safety in such high-safety applications. PFU LIMITED assumes no liability whatsoever for damages arising from use of this product by the user in high-safety applications, and for any claims or compensation for damages by the user or a third party.

About the use of mercury

	Lamp(s) inside this product contain mercury and must be recycled or disposed of according to local, state, or federal laws.
---	---

To avoid unexpected injuries;

- Do not put the substance contained in the lamp in your mouth as it has mercury.
- Do not breathe the chemical liquid contained in the scanner lamps.
- Do not incinerate, crush, or shred the lamps or scanner parts.

Trademarks

Microsoft, Windows, Windows Server, and Windows Vista are either registered trademarks or trademarks of Microsoft Corporation in the United States and/or other countries.

ISIS and Quick Scan are either registered trademarks or trademarks of EMC Corporation in the United States.

Adobe, the Adobe logo, Acrobat, and Adobe Reader are either registered trademarks or trade names of Adobe Systems Incorporated in the United States and/or other countries.

Other company names and product names are the registered trademarks or trademarks of the respective companies.

How Trademarks Are Indicated In This Manual

References to operating systems (OS) are indicated as follows:

Windows 2000	Windows [®] 2000 Professional operating system
Windows XP	Windows [®] XP Home Edition operating system, Windows [®] XP Professional operating system (32/64-bit)
Windows Server 2003	Windows Server [®] 2003, Standard Edition (32/64-bit), Windows Server [®] 2003 R2, Standard Edition (32/64-bit)
Windows Vista	Windows Vista [®] Home Basic operating system (32/64-bit), Windows Vista [®] Home Premium operating system (32/64-bit), Windows Vista [®] Business operating system (32/64-bit), Windows Vista [®] Enterprise operating system (32/64-bit), Windows Vista [®] ultimate operating system (32/64-bit)
Windows Server 2008	Windows Server [®] 2008 Standard (32/64-bit), Windows Server [®] 2008 R2 Standard
Windows 7	Windows [®] 7 Home Premium operating system (32/64-bit), Windows [®] 7 Professional operating system (32/64-bit), Windows [®] 7 Enterprise operating system (32/64-bit), Windows [®] 7 Ultimate operating system (32/64-bit)

Where there is no distinction between the different versions of the above operating system, the general term "Windows" is used.

Adobe Acrobat	Adobe [®] Acrobat [®]
---------------	---

All the descriptions in this manual assume the usage of Adobe Acrobat bundled with this product. However, Adobe Acrobat may be upgraded without notice. If the descriptions differ from the screens actually displayed, refer to the Acrobat's "Help".

Manufacturer

PFU LIMITED

International Sales Dept., Imaging Business Division, Products Group
Solid Square East Tower, 580 Horikawa-cho, Saiwai-ku, Kawasaki-shi Kanagawa 212-8563, Japan
Phone : (81-44) 540-4538

© PFU LIMITED 2006-2011

About Maintenance

The user must not perform repairs on this scanner.
Contact the store where you purchased the scanner or an authorized FUJITSU Image Scanner service provider to make repairs to this product.

Warning Indications Used In This Manual

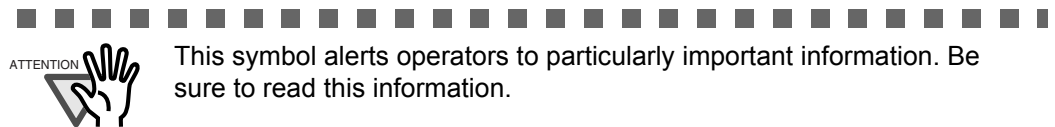


This indication alerts operators to an operation that, if not strictly observed, may result in severe injury or death.

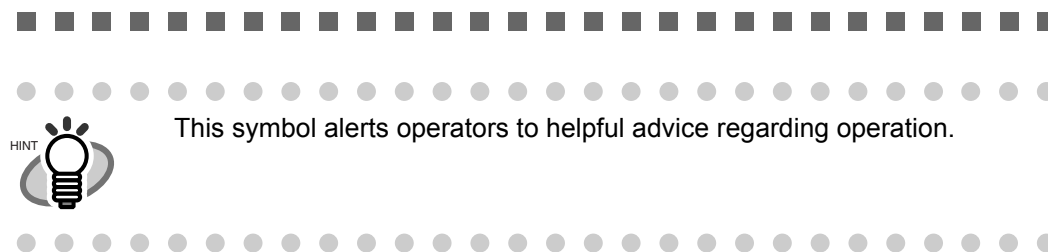


This indication alerts operators to an operation that, if not strictly observed, may result in safety hazards to personnel or damage to equipment.

Symbols Used In This Manual



This symbol alerts operators to particularly important information. Be sure to read this information.



This symbol alerts operators to helpful advice regarding operation.



A TRIANGLE symbol indicates that special care and attention is required. The drawing inside the triangle shows the specific caution.



A CIRCLE with a diagonal line inside shows action which users may not perform. The drawing inside or under the circle shows the specific action that is not allowed.



Outline characters on a colored background show instructions users should follow. It may also include the drawing that shows the specific instruction.

Screen Examples In This Manual

The screen examples in this manual are subject to change without notice in the interest of product improvement. If the actual displayed screen differs from the screen examples in this manual, operate by following the actual displayed screen while referring to the User's Manual of the scanner application you are using.

The screenshots in this manual were captured from TWAIN scanner driver, ScandAll PRO Image Capturing Utility Software, ISIS scanner driver, QuickScan Pro™ image capturing software and Adobe® Acrobat®.

■ Safety Precautions

In the following warnings, "power cable" may refer to the AC cable connected to the AC adapter collectively.



Do not damage the AC cable.



A damaged AC cable may cause fire or electric shock.

Be careful of the following when handling the power cable:

- Do not moisten, modify, tie, bundle, or wind the cable.
- Do not place heavy objects on the cable, trap the cable in a doorway, drop or damage the cable in any other way.
- Do not pull or forcibly bend or twist the cable.
- Do not place any metal near to the plug of the power cable.

Do not use damaged AC cables or power plugs, or install any cables or power plugs to loose wall sockets.

Use only specified AC cables and connector cables



Use only specified AC cables and connector cables. Failure to use the correct cables might cause electric shock and/or equipment failure.

Please don't use the AC cable provided with this scanner for other devices, since this might cause equipment failure and other troubles or an electric shock.

Use this scanner only at the indicated power voltage. Do not connect to multiple-power strips.



Use this scanner only at the indicated power voltage and current. Improper power voltage and current might cause fire or electric shock. Do not connect to multiple-power strips.

Do not touch the AC cable with wet hands.



Do not touch the power plug with wet hands. Doing so might cause electric shock.

Wipe any dust from the power plug.



Wipe off any dust from the power cable, metal parts on the power plug or metal fittings with a soft, dry cloth. Accumulated dust might cause fire or electric shock.

Do not install the device in locations that has oil smoke, steam, humidity, and dust.



Do not install the scanner in locations subject to oil smoke, steam, humidity, and dust. Doing so might cause a fire or electric shock.

Turn the scanner OFF if it is damaged.



If the scanner is damaged for any reason, disconnect immediately the power plug in order to turn out the scanner. Contact the store where you purchased the scanner.

Do not put liquids inside the scanner.



Do not insert or drop metal objects in to the scanner. Do not scan wet documents or documents with paper clips or staples. Do not splash or allow the scanner to get wet.



If foreign objects (water, small metal objects, liquids, etc.) get inside the scanner, immediately turn off the scanner and disconnect the power plug from the power outlet, then contact the store where you bought the scanner or the Maintenance Service Center. Pay particular attention to this warning in households where there are small children.



Do not touch the inside of the scanner unless necessary.



Do not take apart or modify the scanner. The inside of the scanner contains high-voltage components. Touching these components might cause fire or electric shock.

Do not use the scanner if there is a strange odor.



If you detect excessive heat coming from the device or detect other problems such as smoke, strange smells or noises, disconnect immediately the power plug in order to turn out the scanner. Make sure that any smoke coming from it has stopped, before contacting the store where you bought the scanner or an authorized FUJITSU scanner service provider.

Do not use aerosol sprays near the scanner.



Do not use any aerosol sprays or alcohol based sprays to clean the scanner. Dust blown up by strong air from the spray may enter the inside of the scanner. This may cause the scanner to fail or malfunction. Sparks, caused by static electricity, generated when blowing off dust and dirt from the outside of the scanner may cause a fire.



Do not install the scanner on unstable surfaces.



Make sure that the scanner is installed on a flat, level surface and that none of its parts extend beyond the surface top, such as a desk or table. Do not install the scanner on unstable surfaces. Install the scanner on a level surface that is free of vibration to prevent it from falling.



Install the scanner on a strong surface that will support the weight of the scanner and other devices.

Do not block the ventilation ports.



Do not block the ventilation ports. Blocking the ventilation ports generates heat inside of scanner, which may results in fire or scanner failure.

Do not place heavy objects or stand on top of the scanner.



Do not place heavy objects on the scanner or use the scanner's surface top to perform other work. Improper installation might cause injuries and equipment failure.

Firmly insert the power plug.



Firmly insert the power plug as far it can go into the power outlet.

Avoid any contact when scanner is in use.



Avoid touching any scanner mechanism during scanning since this may cause injuries.

Do not use the scanner immediately after moving it from a cold place into a warm room.



Do not use the device immediately after moving it from a cold place into a warm room. This may cause condensation, which might lead to scanning errors. Let the device dry about one or two hours before you use it.

Before moving the scanner, disconnect the power plug from the power outlet.



Do not move the scanner with the power and interface cables connected as this might damage the cables, causing fire, electric shock or injuries. Before moving the scanner, be sure to disconnect the power plug from the power outlet, and all other data cables. Make sure that the floor is free of any obstruction.

Protect the scanner from static electricity.



Install the scanner away from strong magnetic fields and other sources of electronic noise. Also, protect the scanner from any static electricity as this might cause the scanner to malfunction.

Disconnect the power plug from the power outlet when the scanner is not used for a long period of time.



When the scanner is not going to be used for a long period of time, be sure to disconnect the power plug from the power outlet for safety.

Do not install the scanner in the direct sunlight.



Do not install the scanner under direct sunlight or near heating apparatus. Doing so might cause excessive heat to build up inside the scanner, which can cause scanner trouble or even fire. Install the scanner in a well-ventilated location.

Before moving the scanner, make sure the shipping lock is locked.



When moving the scanner, be sure to lock the shipping lock in order to prevent damages to the scanner.

Chapter 1

NAME OF PARTS

This chapter shows the exterior view and the name of each part to describe its function.

1.1 Units

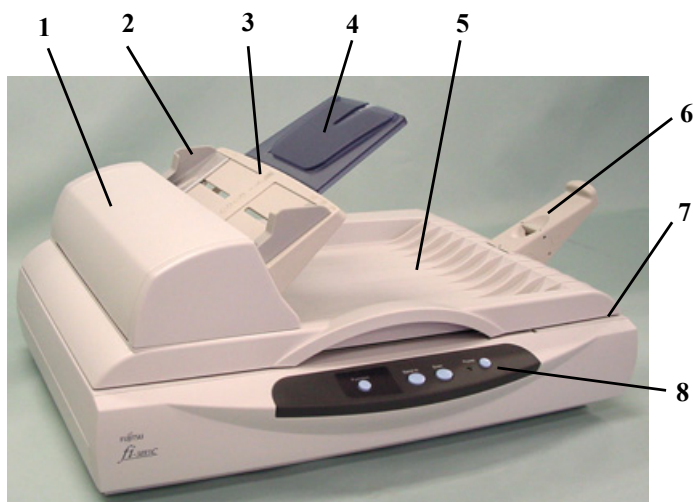
1.2 Operator Panel

2

5

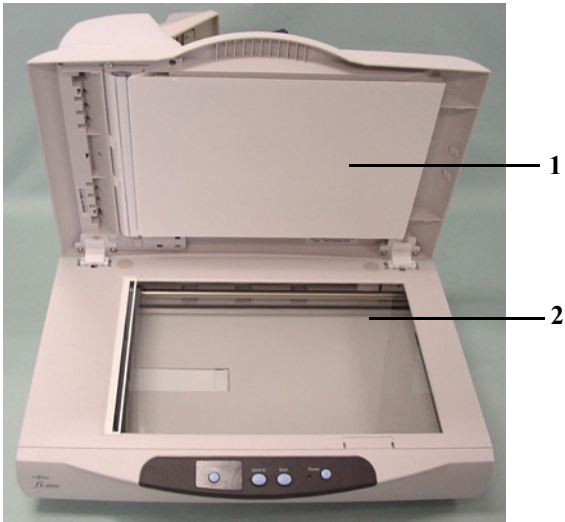
1.1 Units

1. Front side



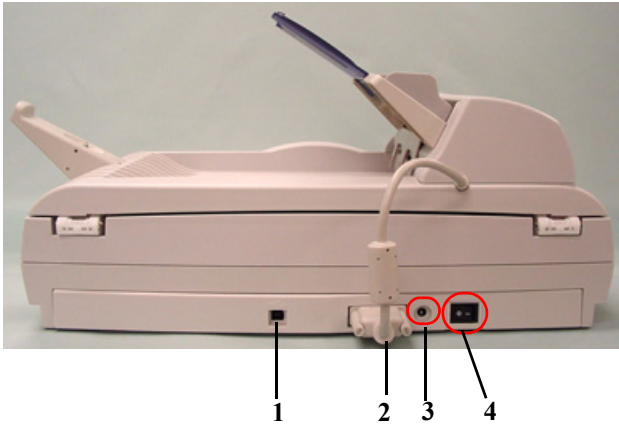
Part	Function
1. Automatic document feeder (ADF)	Automatically feeds documents one by one to the reading position in the scanner.
2. Side guides	Holds the documents straight.
3. ADF paper chute	Holds the documents to be fed by the automatic document feeder (ADF).
4. Extension	Extended when long documents are set.
5. Document cover	Stacks the documents after being scanned by ADF. Holds the document to be scanned on Flatbed.
6. Document stopper	Prevents ejected documents from dropping off the scanners exit tray.
7. Flatbed	Used when the ADF is not appropriate to scan the document.
8. Operator panel	Turns on/off the scanner, starts scanning by [Send to] or [Scan] button, or displays function number.

2. Flatbed



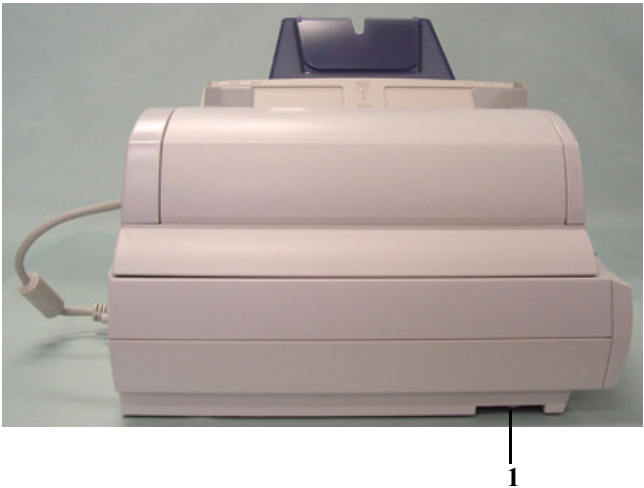
Part	Function
1. Document holding pad	Holds the document on Flatbed.
2. Document bed	On which the document is set face down.

3. Backside

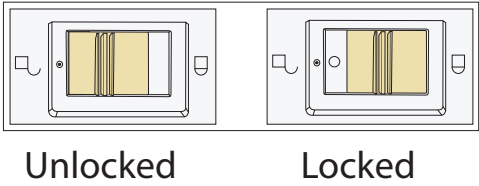


Part	Function
1. USB connector	Connects USB cable to PC.
2. ADF cable connector	Connects the cable from ADF.
3. DC inlet	Connects the cable from AC adaptor
4. Main Power switch	Turns the power ON or OFF to the scanner

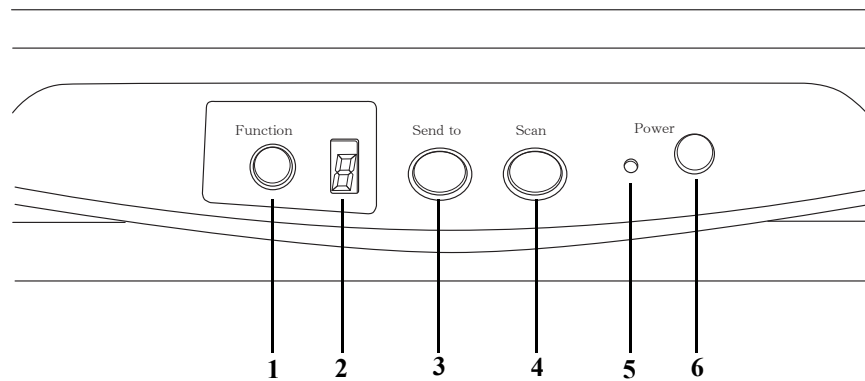
4. Side (ADF side)



Part	Function
1. Shipping lock	Locks the scanning head to prevent the scanner damaged when moving or transporting.



1.2 Operator Panel



Part	Function
1. Function button	Changes the function activated by [Send to] button.
2. Function number display	Indicates the function number or error status. For detail refer "4.1 Error Indications in the Function Number Display" on page 54
3. [Send to] button	Launches an application software which is linked by the value of Function number display.
4. [Scan] button	Launches an application software linked.
5. Power LED	Lights when the scanner is turned on.
6. Power button	Turns the scanner ON or OFF

Chapter 2

2

BASIC SCANNER OPERATIONS

This chapter describes how to turn On/Off the scanner, and how to load/scan the documents.

In this chapter Windows XP screenshots are illustrated.

The screens and operations may differ slightly if the OS you are using is not Windows XP.

Also, when TWAIN is updated the screens and operations noted in this chapter will differ slightly.

2.1 Turning ON/OFF the Scanner	8
2.2 Loading Documents on ADF	12
2.3 Loading Document on Flatbed	17
2.4 Scanning Documents	19
2.5 How to use the Scanner Driver	22
2.6 Image Scanning Application	36

2.1 Turning ON/OFF the Scanner

1. Turning the Power On

Switch on the Main Power switch located on the side. Then press [Power] button on the operator Panel.

The scanner is turned ON, and the green LED on the operator panel lights.

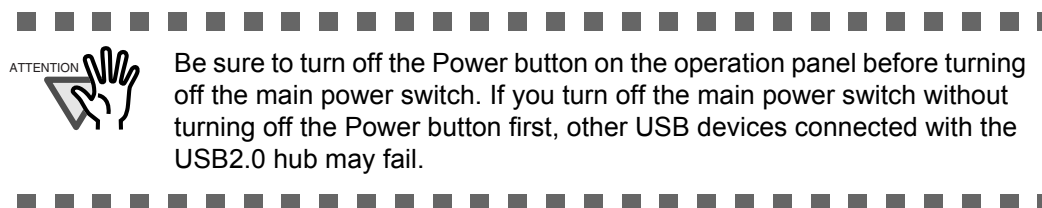
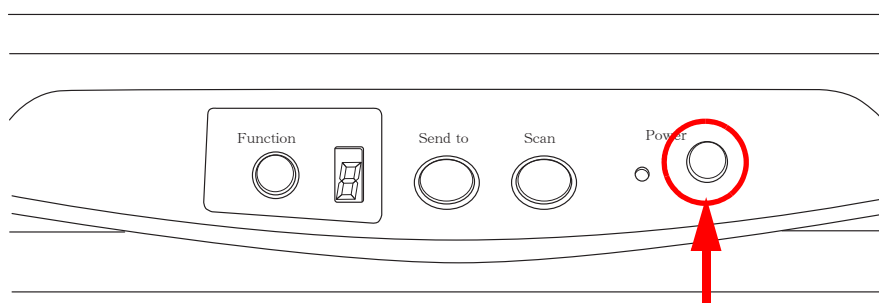
During the initialization, the indication of the Function Number Display changes as follows:

"8" -> "P" -> "0" -> "1"

The indication "1" means that the operator panel scanner is in the ready status.

2. Turning the Power Off

Hold the power button down for at least two seconds.



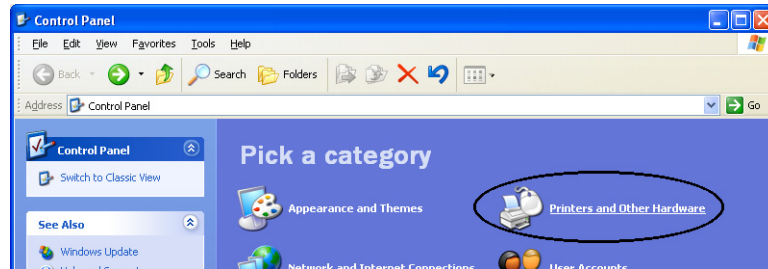
■ About Power ON/OFF Control

You can select either the scanner to be turned on/off with disable the Power button on the operator panel, or alternately you would then power the scanner on/off by connecting or disconnecting the power cable. The procedure is as follows.

1. Open Scanner's Properties.

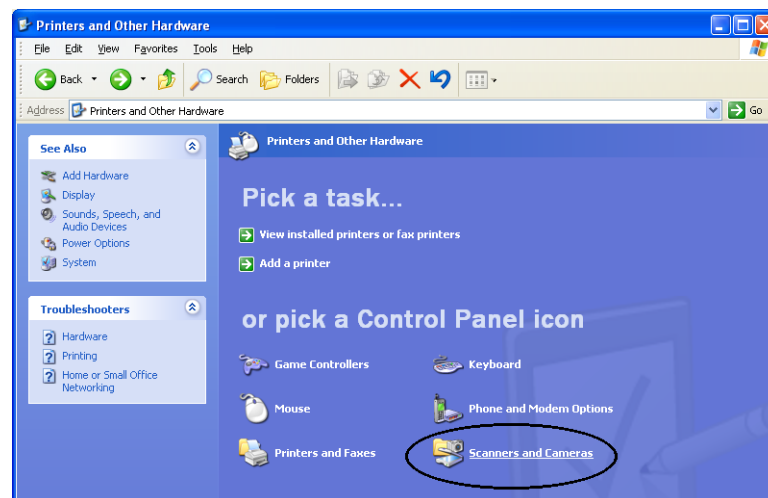
- 1) When turning on the power, check that the scanner is connected to your PC. Refer to "2.3 Connecting the Scanner your a PC" in fi-5015C Getting Started on the Setup DVD-ROM for information about connecting the scanner to your personal computer.

- 2) Double click the "Printer and Other Hardware" icon on the Control panel of your PC.



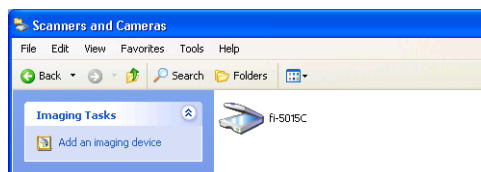
⇒ The [Printer and Other Hardware] window appears.

- 3) On the [Printers and Other Hardware] window, double click the [Scanners and Cameras] icon.

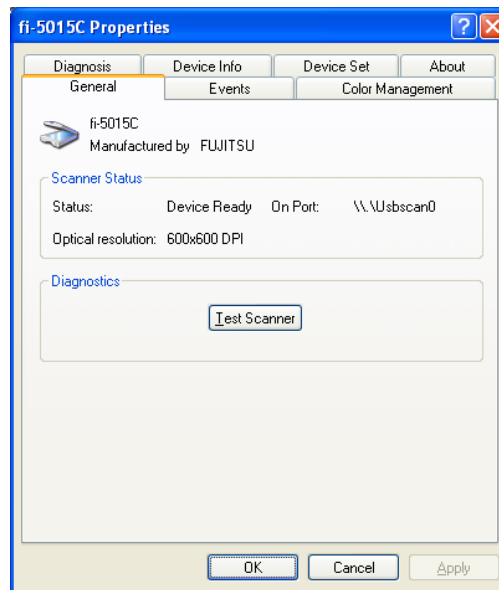


⇒ The [Scanners and Cameras] window is displayed.

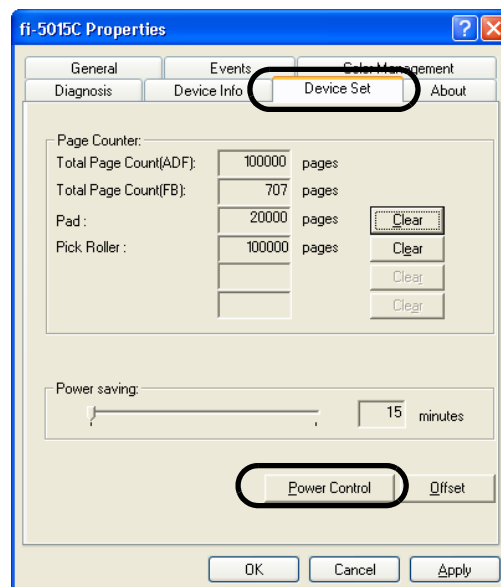
- 4) Right click the "fi-5015C", and select [Properties] from the menu (for Windows XP), or double click (for Windows 2000).



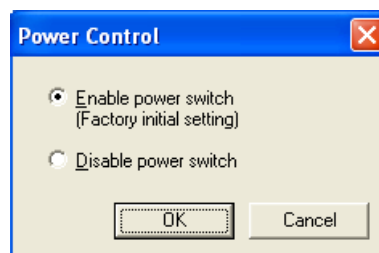
⇒ The [fi-5015C Properties] dialog box appears.



- 5) Click the "Device Set" tab.
⇒ The following panel appears.



2. Click [Power Control] button
⇒ The following screen is displayed.



3. In this screen,

- To power on/off the scanner by pressing the Power button:
⇒ select "Enable power switch".
- To power on/off the scanner by connecting or disconnecting the AC cable:
⇒ select "Disable power switch".

■ Power Save Mode

The Power Save mode keeps the scanner in a low-powered state after it has been turned ON. If no operation is performed on the scanner for 15 minutes, the scanner automatically switches to the Power Save mode.

In the Power Save mode, the indication of the Function Number display on the operator panel goes out, but the green LED stays lit.

To return from the Power Save mode, perform one of the following:

- Load the document on the ADF paper chute.
- Press any button on the operator panel.
(The scanner will be turned OFF when pressing down the power button for at least two seconds.)
- Execute a command from the scanner driver.

2.2 Loading Documents on ADF

This section explains how to check the document condition and load them on ADF. These operations are very important to avoid paper jam or scanning error.

2.2.1 Checking document condition

Check that the document meets the following condition.



- If the documents do not meet the conditions, scan them on Flatbed referring to "Loading Document on Flatbed" on page.17
- If you scan sheets of paper that is not recommended for feeding with ADF, a paper jam may occur in the scanner or a wrinkle may occur on a sheet. To prevent this from occurring, use Flatbed when scanning such paper.

■ Document Size

For ADF:	Minimum 115 (Width) x 140 (Length) mm	(4.53 x 5.51 in.)
	Maximum 216 (Width) x 355 (Length) mm	(8.5 x 14 in.)

■ Document Type

The following paper types are recommended for ADF scanning:

- Woodfree paper
- Wood containing paper

When using documents other than above paper types, scan some test sheets of the same type to see if the documents can be scanned or not, before attempting to scan the documents.

■ Document Thickness

Paper thickness is generally expressed by "paper weight". The following shows the paper weights that can be used on this scanner:

- 52 g/m² to 127 g/m² (14lb to 34lb)

■ Precautions

The following documents may not be scanned successfully:

- Documents of non-uniform thickness (e.g. envelopes and documents with photographs attached)
- Wrinkled or curled documents (Refer to HINTs on the next page)
- Folded or torn documents
- Tracing paper
- Coated paper
- Carbon paper
- Carbonless paper
- Photosensitive paper
- Perforated or punched documents

- Documents that are not square or rectangular
- Very thin documents
- Photographs

Do not use the following documents:

- Paper-clipped or stapled documents
- Documents on which the ink is still wet
- Documents other than paper such as fabric, metal foil, or transparencies



- When scanning semi-transparent documents, slide the [Brightness] bar to light to avoid bleed through.
- To prevent the rollers from becoming dirty, avoid scanning documents containing large areas written or filled in pencil. If scanning of such documents is unavoidable, clean the rollers frequently



- Carbonless paper contains chemical substances that may damage the Pad ASSY or rollers (e.g. Pick roller) when these types of documents are fed. Pay attention to the following:

Cleaning:

If pick errors occur frequently, clean the Pad ASSY.

For details on cleaning the Pad ASSY, refer to "3.2.3 Cleaning the ADF" on page 41.

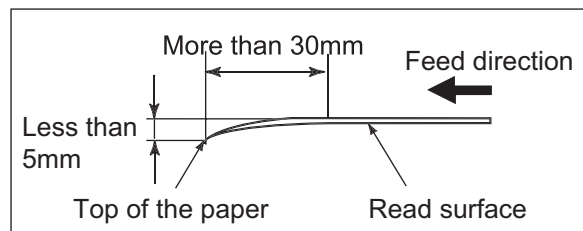
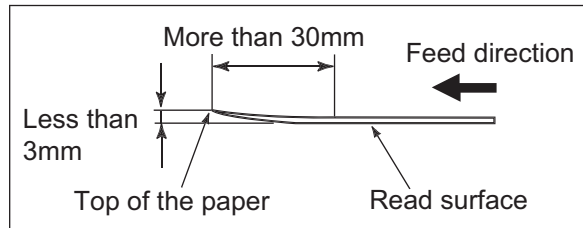
Replacing parts:

The service lives of the Pad ASSY and Pick roller ASSY are sometimes shortened when scanning medium-grade paper documents.

- If paper containing wood is scanned, the service life of the Pad and Pick roller may become shorter than that of the Pad and Pick roller used for scanning only woodfree paper.
- The pad or rollers of the scanner could be damaged if photographs or sheets of paper attached to the scanned document have contact with the pad or rollers during scanning.
- Scanning documents of calendered paper such as photographs may damage the surface of them.



When using the ADF, the leading edge of all document sheets must be evenly aligned. Make sure that curling at the leading edge is within the following tolerances:




2.2.2 Loading documents on ADF

This section explains how to load documents on ADF.

1. Align the edges of the documents.

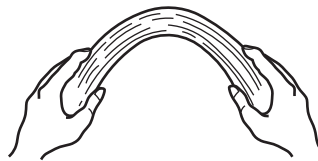
- 1) Grasp no more than 50 sheets in a stack.
- 2) Confirm that all the documents have the same width.



- The documents on ADF paper chute should be less than 50 sheets. Setting more than 50 sheets may cause paper jam or reading problem.
- When scanning with the ADF, make sure that no documents are placed on the flatbed. Any documents on the flatbed will raise the flatbed cover and cause deterioration of image quality.

2. Fan the documents as follows:

- 1) Lightly grip both ends of the documents with both hands, and bend the documents as follows.

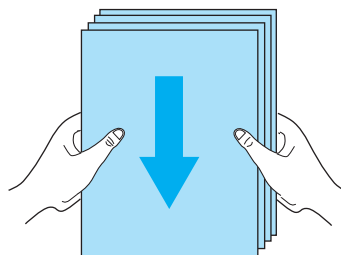


- 2) Hold the documents firmly with both hands and bend them back as follows so that the bent section rises up in the middle of the stack as shown below.



- 3) Repeat steps 1) and 2) a couple of times.
- 4) Rotate documents 90 degrees, and fan again.

3. Align the top of the documents.



-
4. Load the documents on the ADF paper chute.



ATTENTION



Set the documents face-up in the ADF paper chute with the upper edge of the documents downwards.

5. Adjust the side guides to the width of the documents.

Move the side guides so that they touch both sides of the documents.

If there is any clearance between the side guides and the edges of documents, the scanned image may be skewed.



6. Scan the documents.

For how to scan the document, refer to "2.4 Scanning Documents" on page.19.

2.3 Loading Document on Flatbed



Do not look directly at the light source during the scanning operation.

1. Open the document cover.
2. Place the document on the document bed (glass) with face down.
3. Position the document so that the upper-left corner of the document is aligned with the reference mark of the document bed.



4. Close the document cover gently.
5. Scan the document.

For how to scan the document, refer to "2.4 Scanning Documents" on page.19.



- Do not move the document during scanning.
- Do not press or open the document cover during scanning.



■ Scanning Thick Documents with Flatbed

When scanning a thick document such as a book, please remember the following notes.

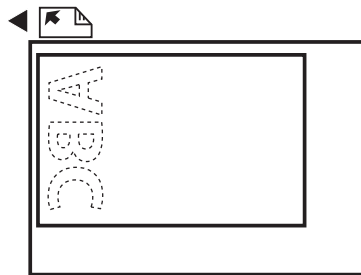
1. The document cover can be pulled out upwards.
2. The not-seated part of the document is not scanned correctly.

■ Document Size

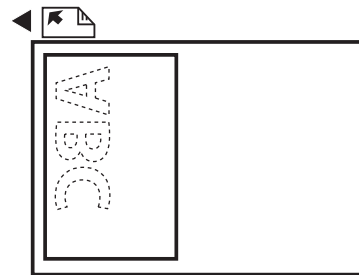
For Flatbed: Minimum 26 (Width) x 26 (Length) mm (1 x 1 in.)
 Maximum 216 (Width) x 297 (Length) mm (8.5 x 11.7 in.)

Orientation of the document and how to set Paper size shall be as follows for Portrait scanning or Landscape scanning

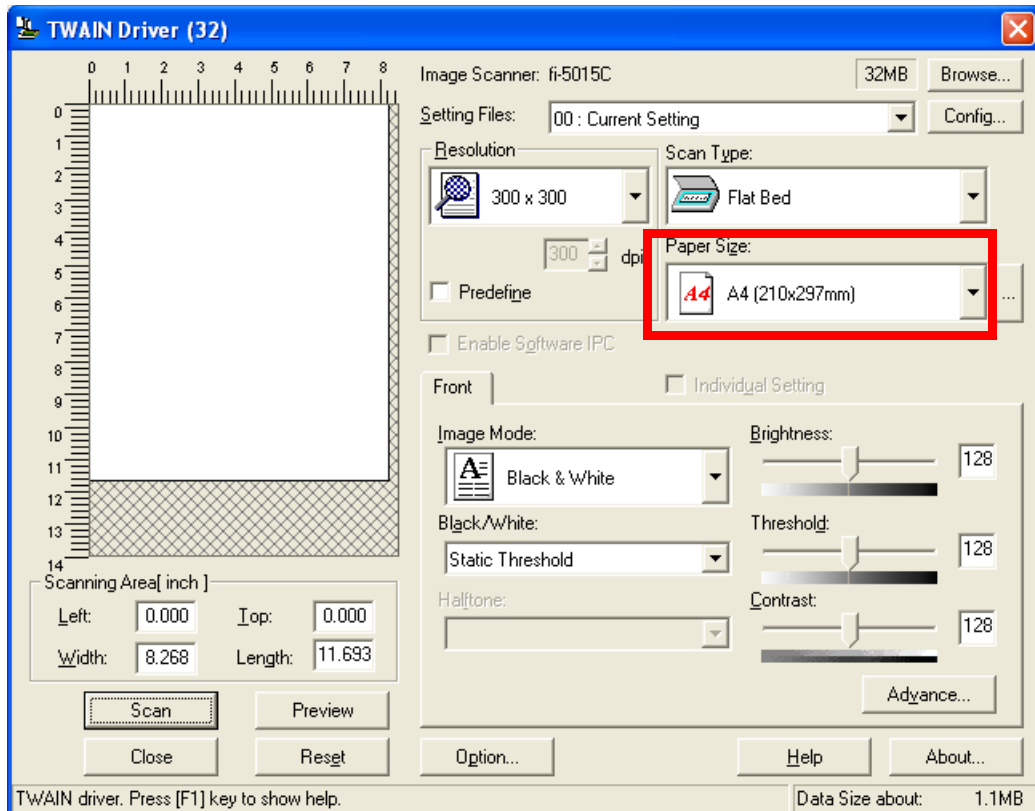
[Portrait]



[Landscape]



- Paper Size setting
Select Paper Size among A4, A5, B5, Letter and Exective, in the following driver screen.
- Paper Size setting
Select Paper Size A5L, in the following driver screen.



2.4 Scanning Documents

This section explains how to scan documents using ScandAll PRO as an example.

1. Load documents on the scanner.

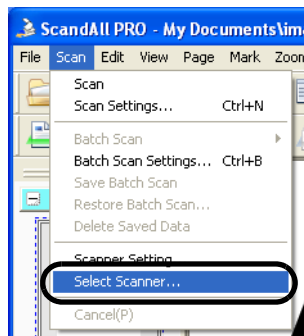
For details about loading documents, refer to "2.2 Loading Documents on ADF" on page 12 or "2.3 Loading Document on Flatbed" on page 17.

2. Start up ScandAll PRO.

Select [Start] - [All Programs] - [Fujitsu ScandAll PRO] - [ScandAll PRO].
⇒ This starts up ScandAll PRO.

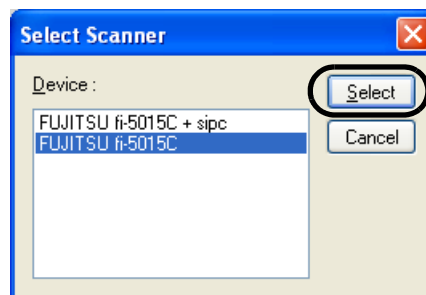
3. Select the scanner to use.

Select [Select Source] from the [Scan] menu.



⇒ The [Select Scanner] dialog box appears.

Select "FUJITSU fi-5015C" and click the [Select] button.



4. Select the [Scan] menu - [Scan Settings].

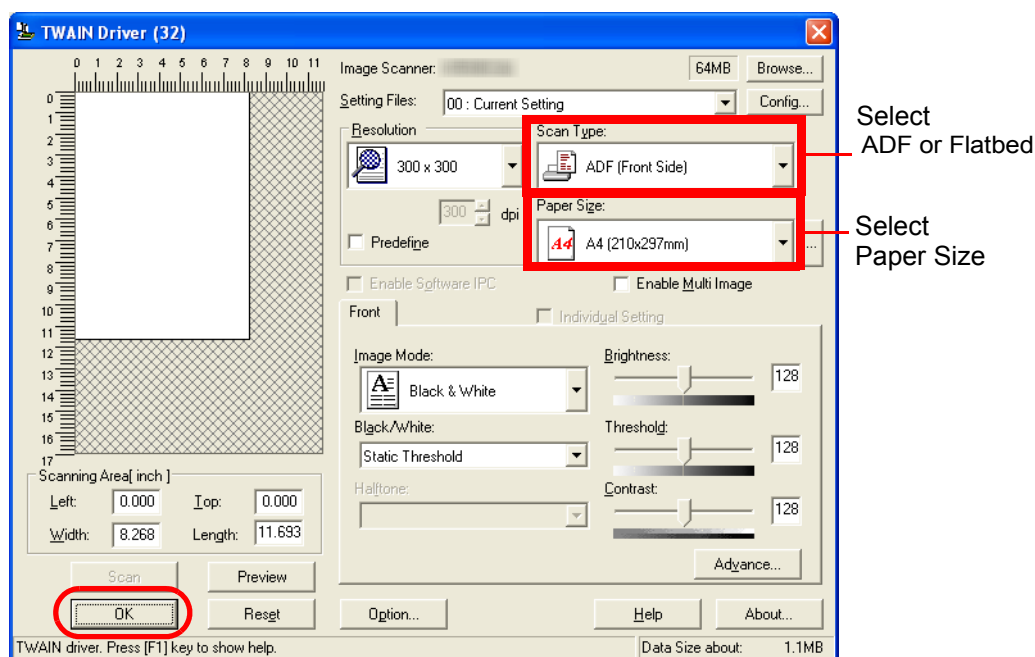
⇒ The [Scan Settings] dialog box appears.

5. Click the [Scanner Setting] button.

⇒ The [TWAIN Driver] dialog box (for setting the scan conditions) appears.

6. Set the scan type, paper size (see below), etc., and click the [OK] button.

For details on settings in the [TWAIN Driver] dialog box, refer to "2.5 How to use the Scanner Driver" on page 22



⇒ You are returned to the [Scan Settings] dialog box.

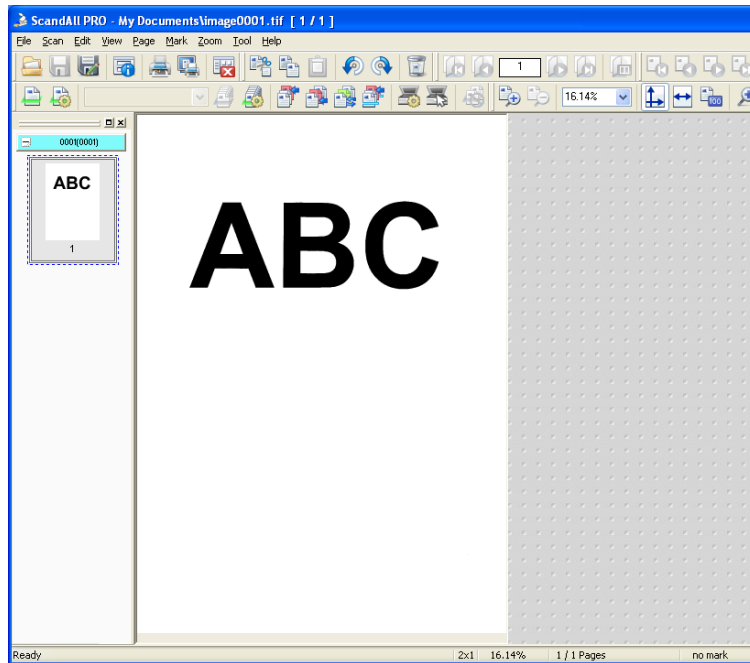
7. Click the [Scan] button.

HINT



When you are using TWAIN, you may see the TWAIN Driver setup dialog box again. If so, click the [Scan] button on the dialog box.

⇒ The images of scanned documents are displayed on the [ScandAll PRO] window.



For details on functions and operations of ScandAll PRO, refer to the description in the [Help] menu.

2.5 How to use the Scanner Driver

■ TWAIN Scanner Driver

TWAIN Scanner Driver is designed for scanning documents with FUJITSU image scanner fi series by using application software that complies with the TWAIN standard.

The following describes the procedure with examples of ScandAll PRO for ordinary scanning by using this driver.

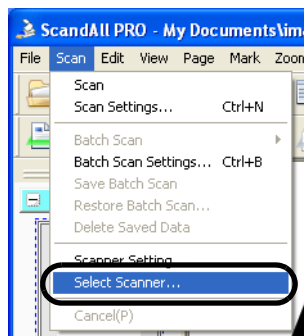
1. Procedure for Basic Scanning Operation

1) Startup the application.

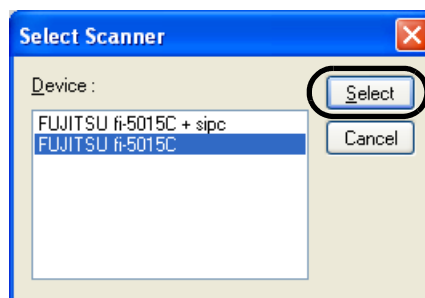
From the [Start] menu, select [All Programs]-[Fujitsu ScandAll PRO] and click [ScandAll PRO].

2) Select your scanner on the window below.

Select [Select Source] from the [Scan] menu.



3) Select the scanner to use, then click the [Select] button.



Select [FUJITSU fi-5015C] then click the [Select] button.

4) Load the documents on the scanner.

For details on loading documents, refer to "2.2 Loading Documents on ADF" on page 12 and "2.3 Loading Document on Flatbed" on page 17

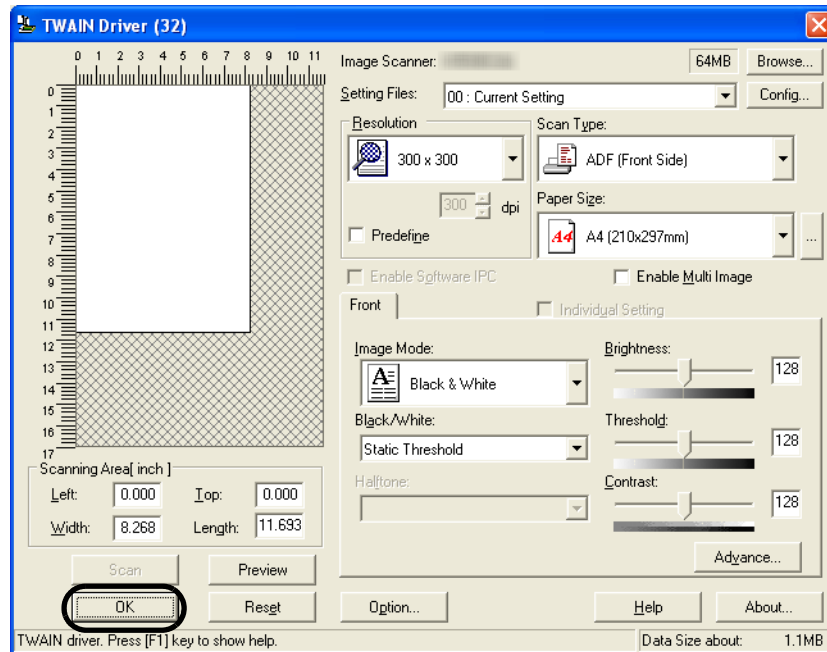
5) Open the TWAIN Driver window.

Select the [Scan] menu - [Scan Settings].

⇒ The [Scan Settings] dialog box appears.

Click the [Scanner Setting] button.

- 6) Configure settings for scanning and click the [OK] button.



For details about the settings on this window, refer to "Setting Window for TWAIN Scanner Driver" on page 25.

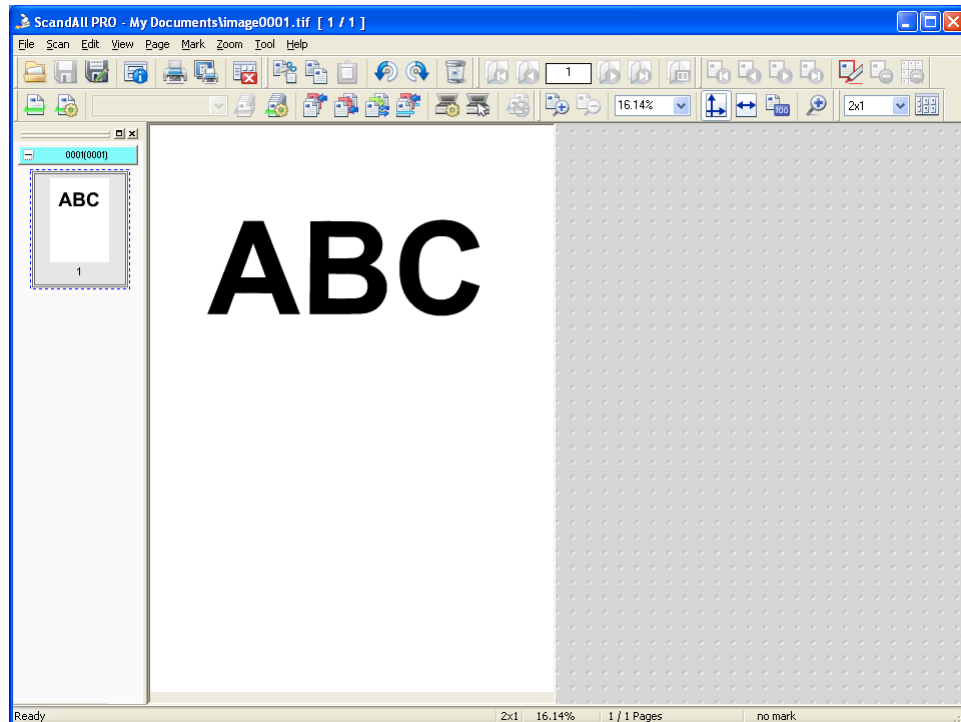
⇒ You are returned to the [Scan Settings] dialog box.

- 7) Click the [Scan] button.



When you are using TWAIN, you may see the TWAIN Driver setup dialog box again. If so, click the [Scan] button on the dialog box.

⇒ The images of scanned documents are displayed on the [ScandAll PRO] window.



With ScandAll PRO, the scanned image will not be displayed when you clear the [Display scanned images immediately after scanning] check box in the [Scan Settings] dialog box.

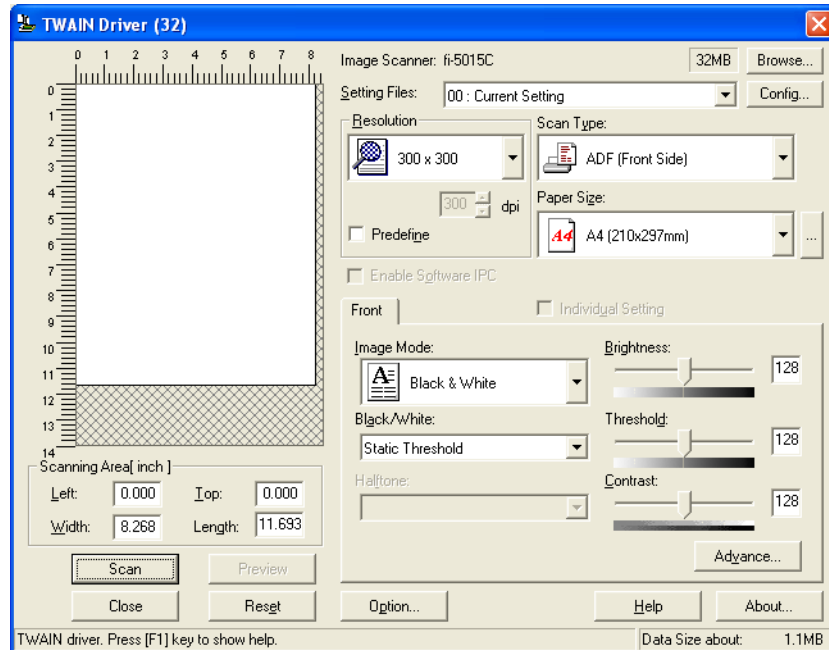
8) Save the scanned images.

The scanned image is saved when the [Save to file] check box is selected in the [Scan Settings] dialog box. If not, select [File] menu - [Save As] to save the file. If you wish to start another scanning, return to procedure 4).

9) End ScandAll PRO.

Select [Exit] from the [File] menu.

2. Setting Window for TWAIN Scanner Driver



You can set the TWAIN Scanner Driver on this window.

The following describes the main setting items.

- For details on each functions, refer to "TWAIN Scanner Driver Help" (appears by pressing [Help] or [F1] button).

Resolution

Specifies the resolution of scanning.

It can be specified by selecting from the list a default value or "custom" (specifies any resolution in 1 dpi unit).

By marking the [Predefine] checkbox, you can select one from three predefined settings as [Best], [Better] and [Normal] to scan documents instead of setting details by yourself. Otherwise, you can change the predefined settings of [Best], [Better] and [Normal] by clicking the [...] button.

Scan Type

Specifies the feeding method, ADF scanning or Flatbed scanning.

Paper Size

Selects the size of documents to be scanned from the list.

Windows for customizing the paper size will appear when you click on [...] by the list. You can save any document size as a customized setting (up to three) or for changing the order of the paper size in the list.

Image Mode

Specifies the image type for the scanned documents.

Black & White	Documents are scanned in binary (black and white).
Halftone	Documents are scanned through halftone processing in black and white.
Grayscale	Documents are scanned in gradations from black to white. For this mode you can select 256 gradations or 4 bit (16 gradations).
Color	Documents are scanned color mod. For this mode, you can select 24 bit Color, 256 Color or 8 Color.

[Scan] button

Starts scanning documents with the current settings.

[Preview] button

Documents are scanned preliminarily before the actual scanning.

You can confirm the image of the documents in the preview window.

[Close] button

Saves the current settings and closes this window.

[Reset] button

Undoes change operation.

[Help] button

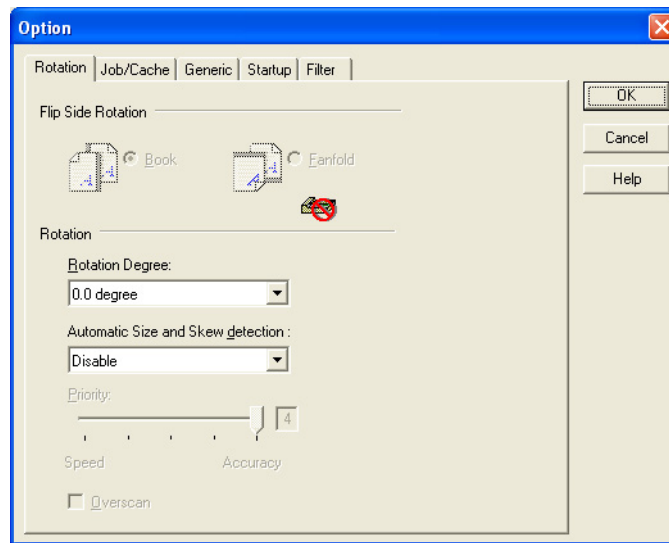
Opens the "TWAIN Scanner Driver Help" window. The window also opens by pressing the [F1] key.

[About...] button

Opens an information window about the TWAIN Scanner Driver's version.

[Option...] button

You can set up the details of optional functions on the window below.

**[Rotation] tab**

Select this tab when setting image rotation.

[Job/Cache] tab

Select this tab when setting cache mode, blank page skipping, etc.

[Generic] tab

Select this tab to change the unit displayed on the Setting Window for the TWAIN Scanner Driver. (Millimeters, Inches, and Pixels are available)

[Startup] tab

Select this tab for setting the Scanner Operation Panel.

[Filter] tab

Select this tab for setting the image processing filter(s).

Page Edge Filler: Fills up the margins of the scanned documents with a selected color.

Digital Endoser: A character string, such as the alphabet and numbers, can be added in the scanned document.

[Advance...] button

Click this button for settings of the advanced image processing.

You can set Dropout Color, Reverse, etc. Also Gamma Pattern by custom settings,

[Config...] button

Click this button for configuring the Setting Files.

You can save the changed settings as a Setting File. From next scanning, the settings are quickly changed by using these Setting Files.

For details of each function, refer to the "TWAIN Scanner Driver Help".

■ ISIS Scanner Driver

ISIS Scanner Driver is designed for scanning documents with FUJITSU image scanner fi series by using application software that complies with the ISIS standard.

The following describes the procedure with examples of QuickScan for ordinary scanning by using this driver.

The procedure may vary depending on your application. If you use an application other than QuickScan, please refer to its Guide or Help for further information.

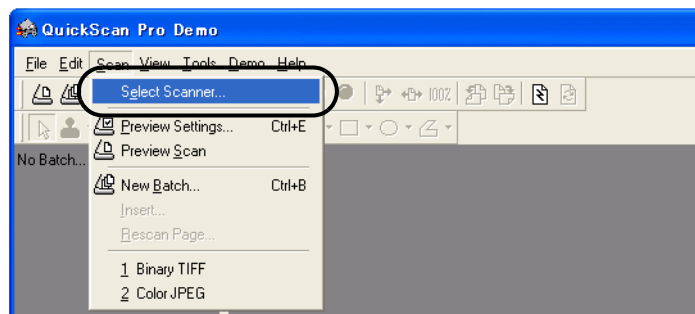
1. Procedure for Basic Scanning Operation

- 1) Startup the application.

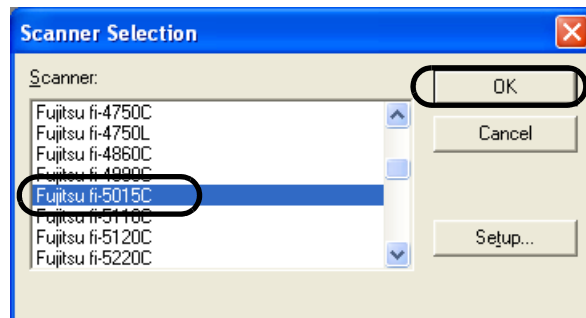
From the [Start] menu, select [Programs]-[QuickScan] and click [QuickScan].

- 2) Select your scanner on the window below.

Select [Scan] - [Select Scanner] on the menu bar.

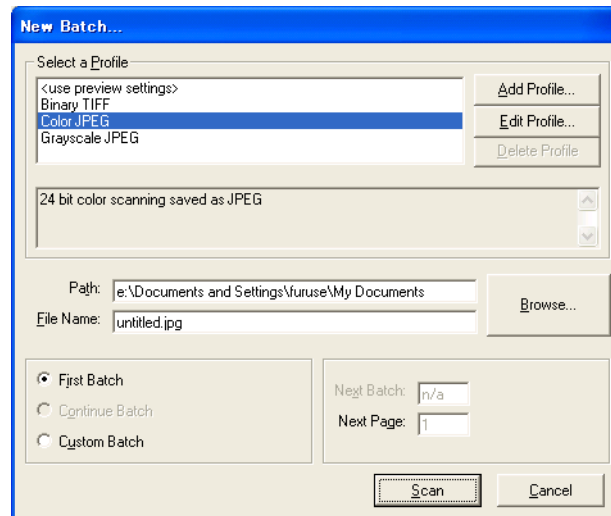


- 3) Select fi-5015C, then click the [OK] button.

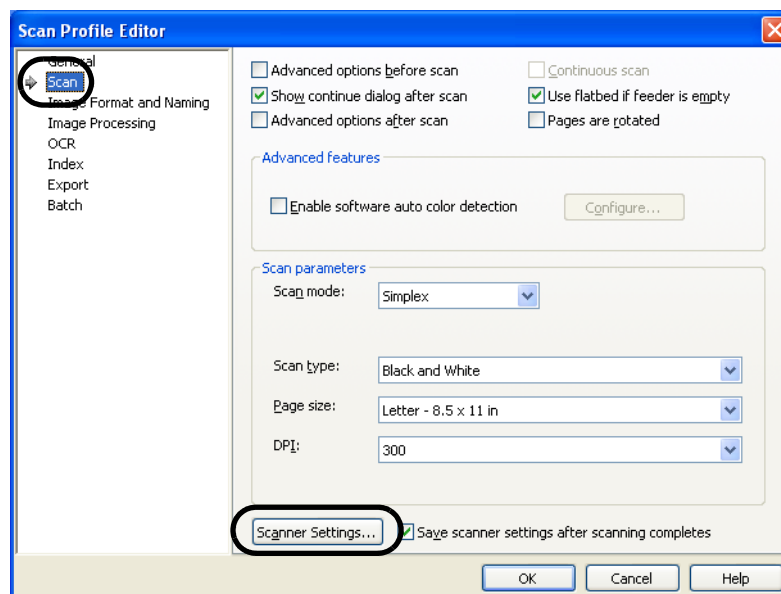


- 4) Select [Scan] - [New Batch] on the menu bar.

- 5) Select the profile for scanning.

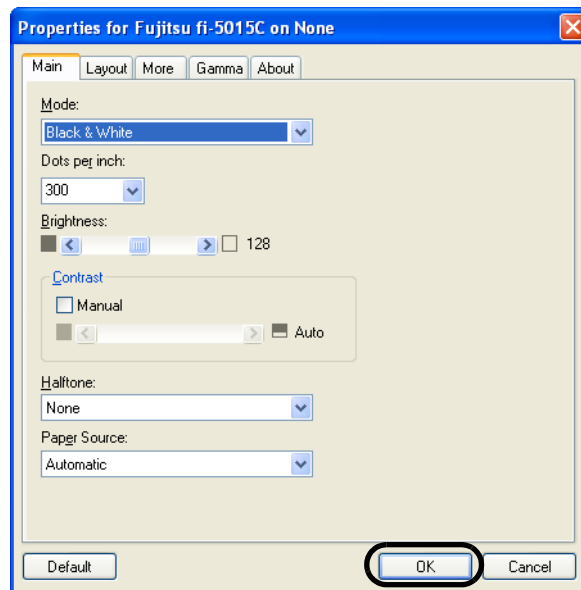


- When creating a new profile
Select one from already existing profiles and click [Add Profile...] button.
⇒ A new profile will be created based on the profile you select.
 - When changing the settings of already existing profiles
Select one from already existing profiles and click [Edit Profile...] button.
⇒ The settings of the selected profile can be changed.
 - When using an existing profile
Select the one from an already existing profiles
⇒ The scanning will be started according to the settings of the selected profile.
Go to the procedure 9.
- 6) Open the window of ISIS Driver.
Select the [Scan] tab and click the [Scanner Settings] on the [Profile Editor] window.



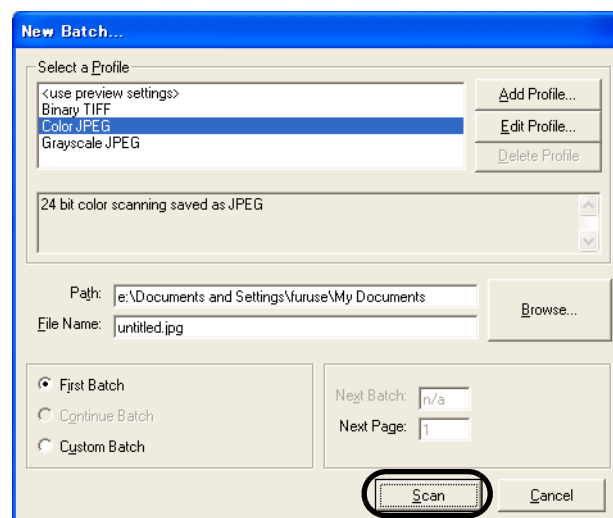
⇒ The configuration window of ISIS driver appears.

- 7) Configure settings for scanning and click the [OK] button.



For details on this dialog box, refer to "Configuration Window of ISIS Scanner Driver" on page 31.

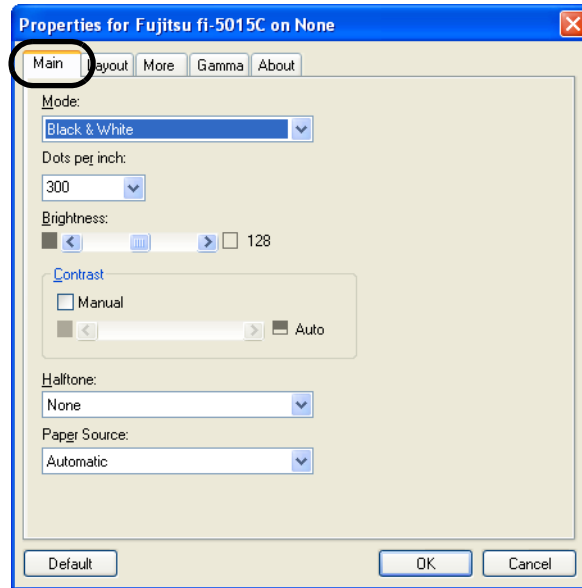
- 8) The [Profile Editor] window appears. Click the [OK] button to return to [New batch] dialog.
- 9) Load the documents on the scanner.
- 10) Click the [Scan] button.



⇒ Scanned images are displayed on the window.

Refer to the "QuickScan Overview" or the "QuickScan Help" for further information on functions and operations of QuickScan. After the installation of QuickScan, it is registered in the [Start] menu.

2. Configuration Window of ISIS Scanner Driver

"Main" tab**Mode**

Selects a color mode suitable for the purpose from the menu.

Black & White Documents are scanned in binary (black and white).

256-level Grayscale Scans data by 254 shades of gray plus black and white. This mode uses 8 bits per pixel. This mode is suitable for scanning monochrome photographs.

24-bit Color Scans data as full-colored image using 24 bits per pixel. This mode is suitable for scanning color photographs.

Dots per inch

Specifies the number of pixels (dots) per inch.

Select a fixed resolution from the list (75, 100, 150, 200, 300, 400, 500, 600).

A higher resolution produces finer image, but requires much more memory.

Halftone

Selects the halftone pattern for halftone scanning. This setting is available when "Black & White" is selected in the "Image Mode".

Dither Pattern 0 This setting is suitable for scanning dark photographs.

Brightness

Sets the brightness of the entire image. Specify the brightness as a number within the range of 1 (dark) to 128 (bright). To brighten the entire image, increase the value of the setting. To darken the entire image, decrease the value.

Contrast

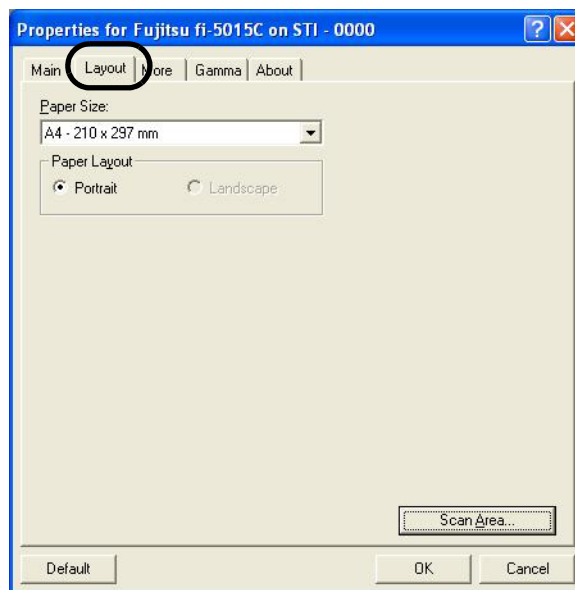
Sets the contrast between light and shadow of the scanned image. Specify the contrast as a number within the range of 1 (low [soft]) to 100 (high [sharp]). Increasing this value makes the contrast sharper.

Paper Source

Selects the scanning method.

- | | |
|-----------|--|
| Automatic | Automatically switches the method between ADF scanning and flatbed scanning. |
| ADF | Scans documents using the automatic document feeder (ADF). |
| Flatbed | Scans documents using the flatbed. |

"Layout" tab



Paper Size

Selects a paper size according to the size of the document to be scanned. Select a standard paper size from the list.

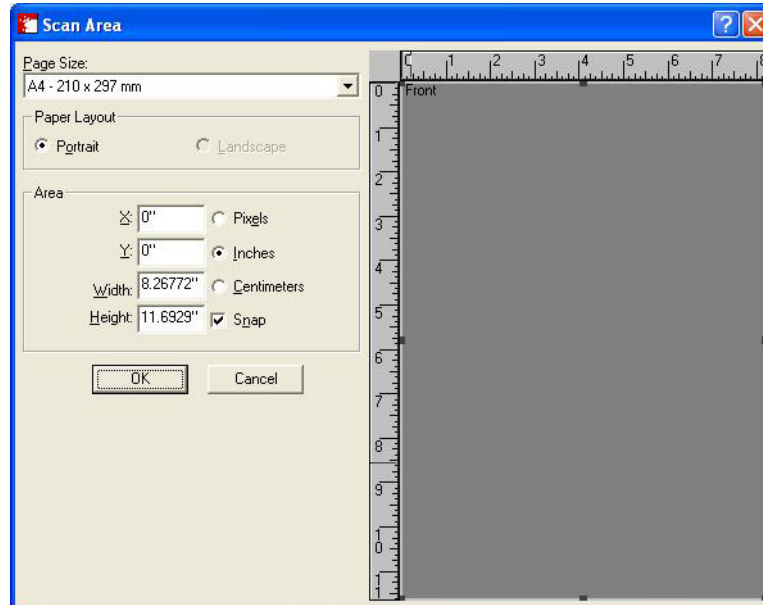
Paper Layout

Specifies orientation of the documents as portrait or landscape.

[Scan Area...] button

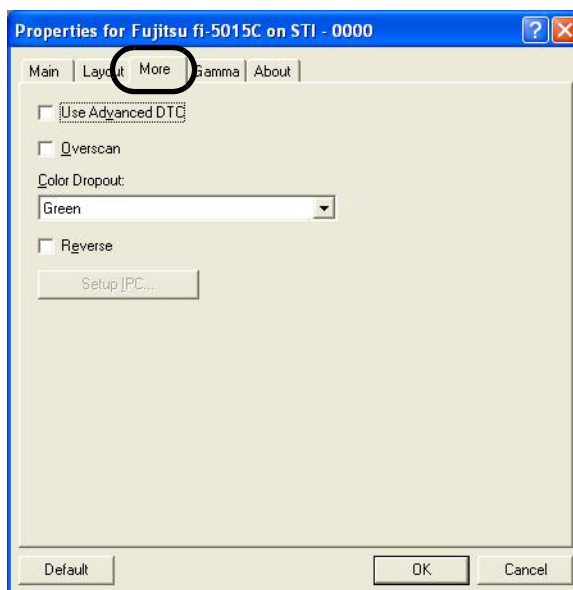
Opens the Scan Area dialog box. Specify scan area for the document size.

The size can be set by dragging the frame with mouse. Otherwise, enter any value for the setting.



"More" tab

Opens [More Settings] window. Used for setting advanced features.



Use Advanced DTC

This option scans any kind of documents by binary processing to produce data with good scanning quality. Documents containing thin letters, characters with the colored background, and colored charts cannot be scanned sufficiently clearly by ordinary binary processing. By using this option, however, you can achieve good scanning quality.

Overscan

Specifies the overscan function, which makes the scanned images larger than the original documents by adding margins.

Color Dropout

Excludes selected color (the three primary colors of light i.e. green, red, blue) from scanned images. For example, if the document contains black text in a red frame and when the red color is selected, the scanner reads only the text and eliminates (drops out) the red frame.

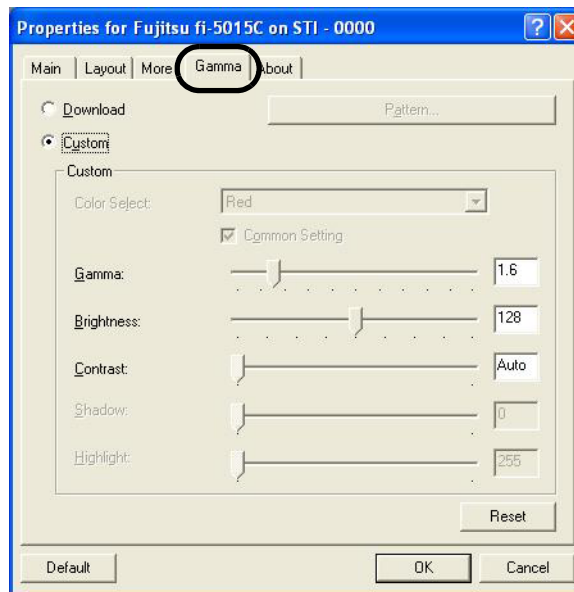
If you do not wish to have any colors dropped out select "None".

Reverse

Colors of scanned images are reversed.

[Setup IPC...] button

You can configure settings for scanning with Image Processing Software Option.

"Gamma" tab**Download**

You can download and use any Gamma pattern.

Custom

You can specify the numeric values of items such as “Gamma”, “Brightness”, “Contrast”.

"About" tab

Displays the version number of ISIS driver.



2.6 Image Scanning Application

This section explains about the bundled "ScandAll PRO" image scanning application, which is used as an example to explain the procedures in this manual.

ScandAll PRO supports both TWAIN and ISIS drivers. By defining scan settings as profiles, you can customize the settings according to your preference.

Chapter 3

MAINTENANCE

This chapter describes how to clear the paper jam, perform daily maintenance and cleaning.

3

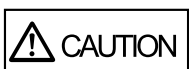


Do not use aerosol sprays near the scanner

Do not use any aerosol sprays or alcohol based sprays to clean the scanner.

Dust blown up by strong air from the spray may enter the inside of the scanner. This may cause the scanner to fail or malfunction.

Sparks, caused by static electricity, generated when blowing off dust and dirt from the outside of the scanner may cause a fire.



Be careful, the inside of ADF (automatic document feeder) may become hot during the operation.

3.1 How to clear the paper jam	38
3.2 Cleaning	39
3.3 Replacing Consumable	44

3.1 How to clear the paper jam



Be careful not to get injured when removing jammed documents.

When a paper jam occurs while using ADF, follow the procedure below to remove jammed paper.

- 1) Remove the documents from the ADF paper chute.
- 2) Open the ADF.



Be careful, the ADF may close and pinch your fingers.

- 3) Remove the jammed paper.



Staples, paper clips, etc. cause document jams. Be sure to fully check the document and feed path, and remove any small metal objects such as these.

Also, before you start scanning, be sure to remove any staples, clips, etc. from the document.



- 4) Close the ADF completely until it clicks.




3.2 Cleaning

To keep scanner performance stable, clean the scanner and replace the consumable if necessary as follows.



Be careful, the inside of ADF (automatic document feeder) may become hot during the operation.

3.2.1 Cleaning Materials

Cleaning Materials	Parts Number	Remarks
Cleaner F1 	PA03950-0352 (*1)	1 bottle Moisten a cloth with this fluid and wipe the scanner clean.
Cleaning Wipe	PA03950-0419 (*2)	24 sheets/pack
Lint-free dry cloth	- Commercially available one	

For details about the cleaning materials, contact the FUJITSU scanner dealer where you purchased the scanner.

*1) It may take long before the cleaner vaporizes if a large quantity is used. When cleaning the scanner parts, dampen a cloth with modest quantities of the cleaner. In addition, wipe off the cleaner completely with a soft lint-free cloth to leave no residue on the surface of the cleaned parts.

*2) Pre-moistened with Cleaner F1, Cleaning Wipes are used instead of moistened cloths.

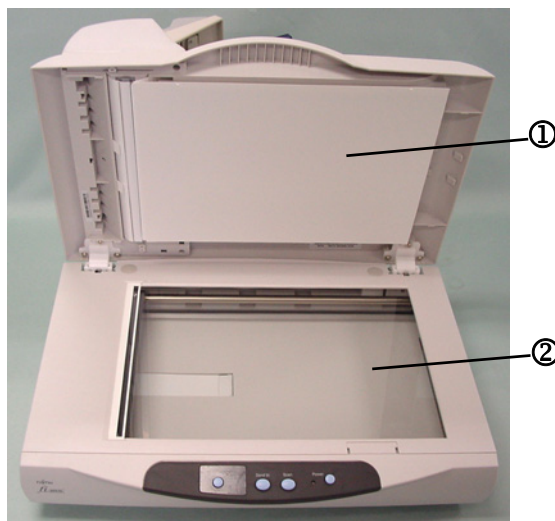
3.2.2 Cleaning the Flatbed



- Detergent for cleaning windows or glass cleaner can be used instead of cleaning fluid. However, do not use paint thinner or other organic solvents.
- Do not allow moisture to get inside the device during cleaning.

■ Cleaning Method

1. Open the document cover.
2. Clean the following locations using a soft, dry cloth moistened with cleaning fluid.



- Document holding pad - ①
Wipe gently.
- Document bed - ②
Wipe lightly.



- Be careful not to allow moisture to get inside the device during cleaning.
- It may take long before the cleaner vaporizes if a large quantity is used. When cleaning the scanner parts, dampen a cloth with modest quantities of the cleaner. In addition, wipe off the cleaner completely with a soft lint-free cloth to leave no residue on the surface of the cleaned parts.

3. Wait for cleaned parts to dry.
4. Gently close the document cover.

3.2.3 Cleaning the ADF

Clean the ADF every 1,000 scans. Note that this guideline varies according to the type of documents you are scanning. For example, it may be necessary to clean the ADF more frequently if documents are scanned when the toner is not sufficiently fixed on the printout.

As the documents are scanned by ADF, Pad ASSY and Pick roller unit may be contaminated with ink, toner particles or paper dust. In this case the scanner may not feed documents smoothly or several documents may be fed at once. If this occurs please clean the ADF as follows to return your scanner to its original state.



Be careful, the inside of ADF (automatic document feeder) may become hot during the operation.

■ Cleaning Method



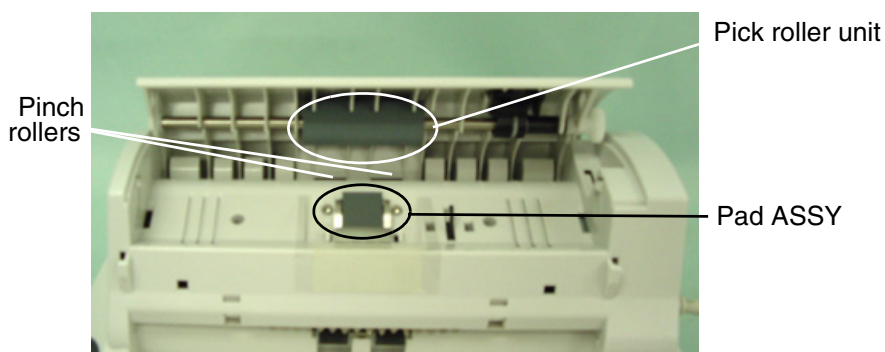
The glass surface under the ADF becomes hot during the operation of the scanner.
Before you start to clean the inner parts of the scanner, disconnect the AC adapter from the power outlet, and wait at least 15 minutes to let the glass cool down.

1. Open the ADF.



Be careful, the ADF may close and pinch your fingers.

2. Clean the following locations with a lint-free cloth moistened with the Cleaner F1.

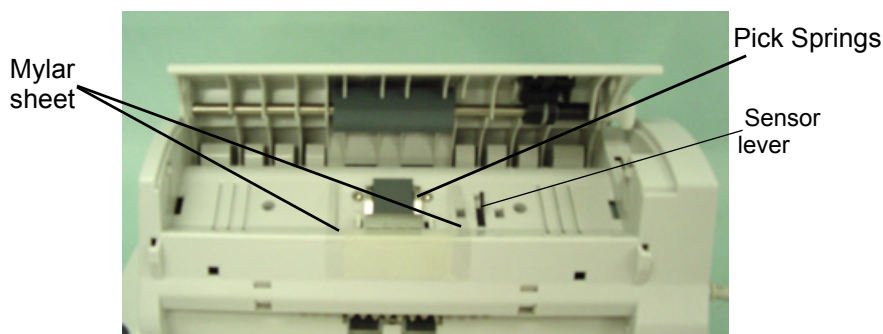




It may take long before the cleaner vaporizes if a large quantity is used. When cleaning the scanner parts, dampen a cloth with modest quantities of the cleaner. In addition, wipe off the cleaner completely with a soft lint-free cloth to leave no residue on the surface of the cleaned parts.

- Pad ASSY

Wipe Pad ASSY with the cloth in the direction from bottom to top.



Be careful not to hook the pick springs, sensor lever and mylar sheet near the Pad ASSY.

- Pick roller unit

Wipe the Pick roller unit by moving the cloth from side to side of rollers. Rotate the rollers forward with your finger and repeat the wiping procedure until all surface of roller are cleaned.

- Pinch rollers

Clean Pinch roller softly not to damage its surface. Try to remove any black stain which may degrade the performance of paper feeding

3. Push in the center of the ADF to return it to its original position, until it clicks.



Close the ADF until it clicks. Paper jams or feeding errors may occur if the ADF is not closed completely.

4. Open the Flatbed cover and clean the following locations.



ATTENTION



The glass surface under the ADF becomes hot during the operation of the scanner.

3.3 Replacing Consumable



Note the inside of ADF (automatic document feeder) may become hot during the operation.

3.3.1 Part number and Replacement cycle

The following table lists the consumable used in the scanner. Be sure to keep some consumables in stock.

The customer is required to replace consumable periodically. Otherwise, the scanner may not function properly. Part number and recommended replacement cycle is,

No.	Name	Part Number	Replacement Cycle
1	Pad ASSY	PA03209-0550	Up to 20,000 sheets, or 1 year
2	Pick roller unit	PA03209-0551	Up to 100,000 sheets, or 1 year

Replacement cycle may be shortened depending on the type of scanned documents. The above replacement cycle is estimated with the following paper quality:

Woodfree paper or Plain paper



Use only the above specified consumables.



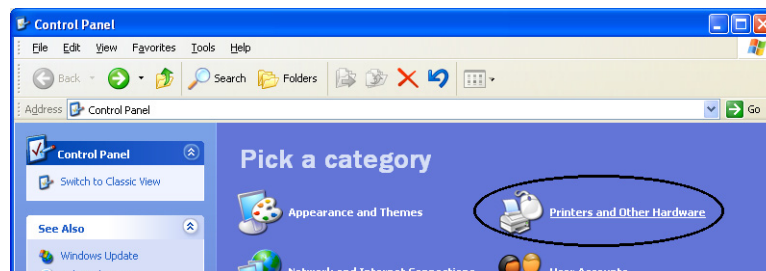
Refer to "Guidelines for Consumable Replacement Cycle" on page 45 to find how many documents are scanned by the consumable.



3.3.2 Guidelines for Consumable Replacement Cycle

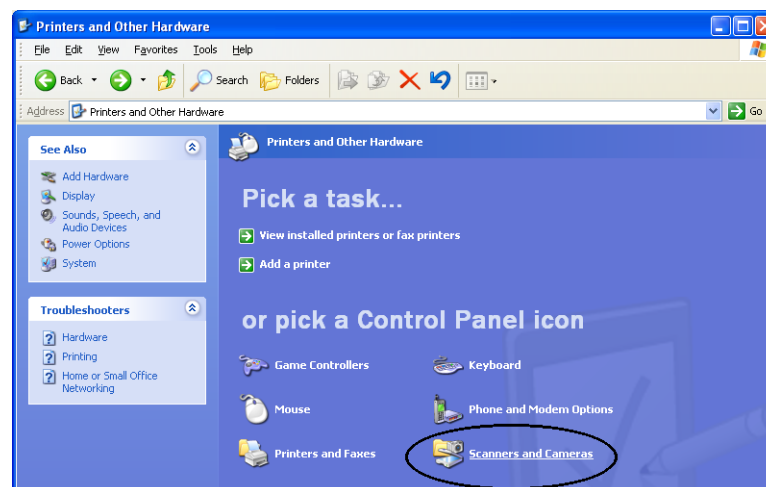
With this product, you can learn how many times the consumables are used so that you can estimate the right timing for the replacement.

1. When turning on the power, check that the scanner is connected to your PC.
Refer to "2.3 Connecting the Scanner to your PC" in fi-5015C Getting Started on the Setup DVD-ROM for information about connecting the scanner to your personal computer.
2. Double click the "Printers and Other Hardware" icon on the Control panel of your PC.



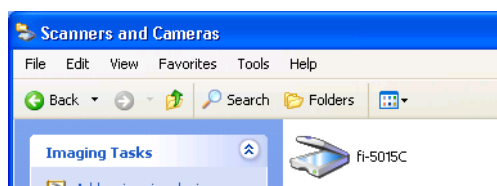
⇒ The [Printer and Other Hardware] window appears.

3. On the [Printers and Other Hardware] window, double click the [Scanners and Cameras] icon.

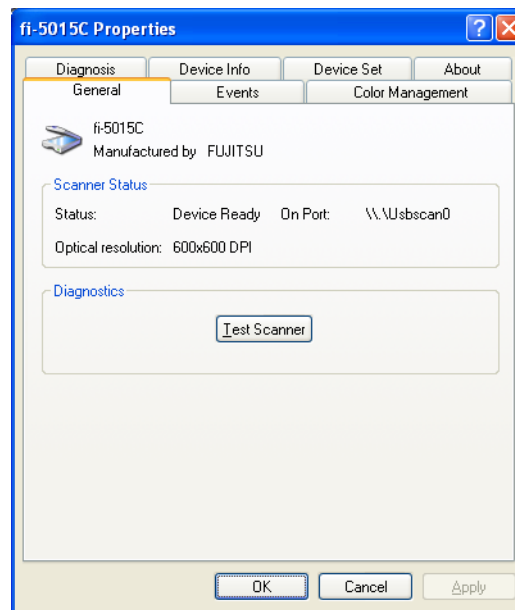


⇒ The [Scanners and Cameras] window is displayed.

4. Right click the "fi-5015C", and select [Properties] from the menu (for Windows XP), or double click (for Windows 2000)

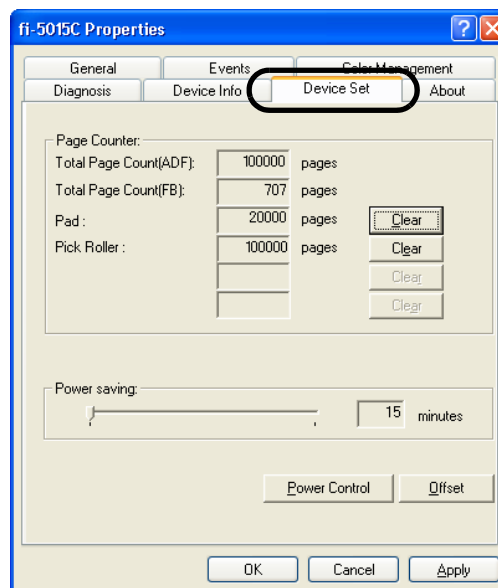


⇒ The [fi-5015C Properties] dialog box appears.



5. Click the "Device Set" tab.

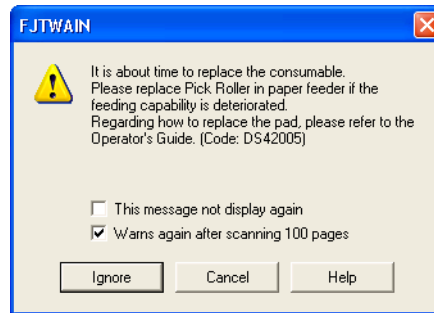
⇒ The following panel appears.



You can confirm the following information on this panel:

- Total number of scans with ADF and Flatbed.
- Pad and Pick roller counter (approximate number of scans after resetting the counter)

The following message may appear while using the scanner:



Replace consumables when this message is displayed.

After clicking the [Ignore] button, this message will disappear and scanning will continue.

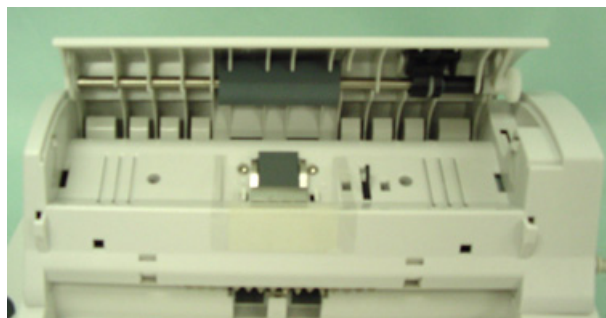
Please replace the consumable as soon as possible.

As a default, this message appears again after 100 scans. If you do not wish this message to display, click the [This message not display again].

To stop scanning and replace the consumable, click the [Cancel] button.

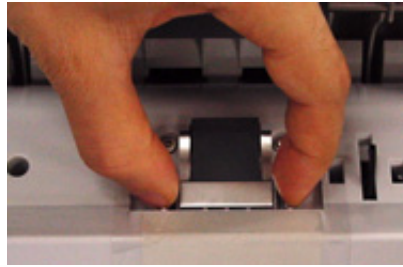
3.3.3 Replacing the Pad ASSY

1. Remove all documents from the ADF paper chute.
2. Open the ADF.



Be careful, the ADF may close and pinch your fingers.

3. Remove the snap-in Pad ASSY by pinching the upper part of the pad clamp as shown in the following photo.



4. Install new Pad ASSY by the reverse procedure of removing.



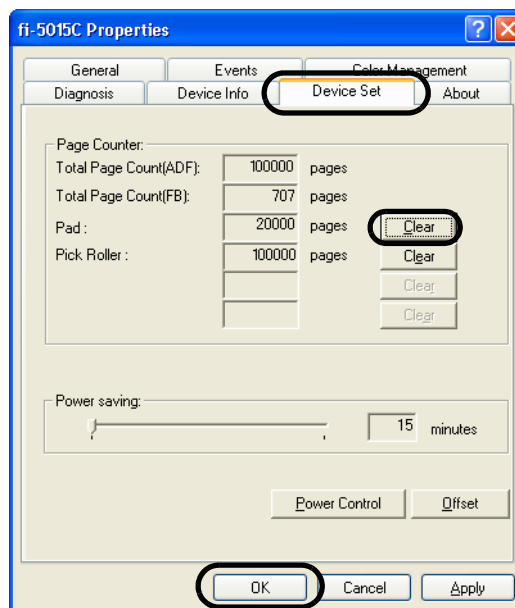
Make sure that the Pad ASSY is firmly attached. When the Pad ASSY is not correctly attached, document jams or other feeding errors may occur.

5. Press the center of the ADF to close it until it clicks.

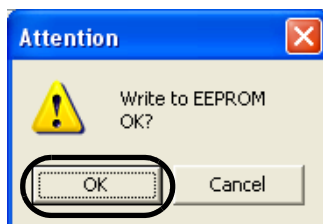


6. Reset the pad counter.
 - 1) Check that the scanner is connected to your PC and turn on the scanner.
 - 2) Open the [Scanners and Cameras] from the control panel of your PC.
 - 3) Open the [Properties] of [fi-5015C] from the [Scanners and Cameras].
⇒ The [Properties of fi-5015C] dialog box appears.

4) Click the "Device Set" tab.



5) After clicking the [Clear] button beside "Pad" in "Page Counter", click the [OK] button.
⇒ The following window appears.



Click the [OK] button.
The Pad counter returns to "0".

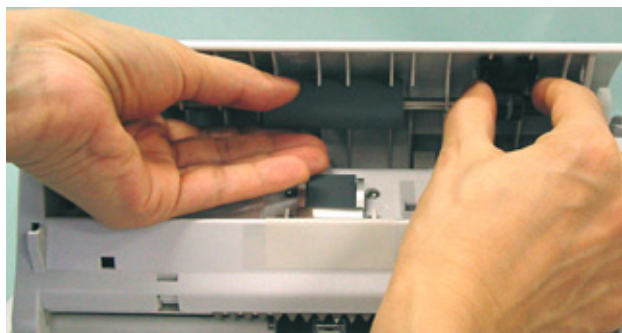
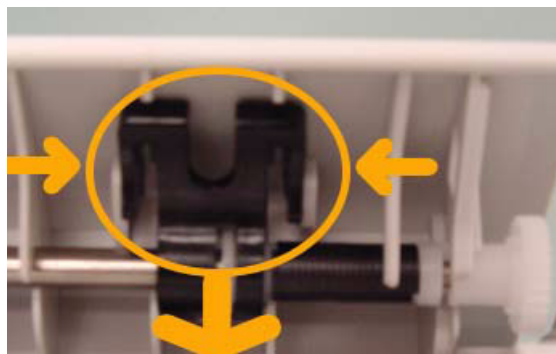
3.3.4 Replacing the Pick roller unit

1. Remove all documents from the ADF paper chute.
2. Open the ADF.



Be careful, the ADF may close and pinch your fingers.

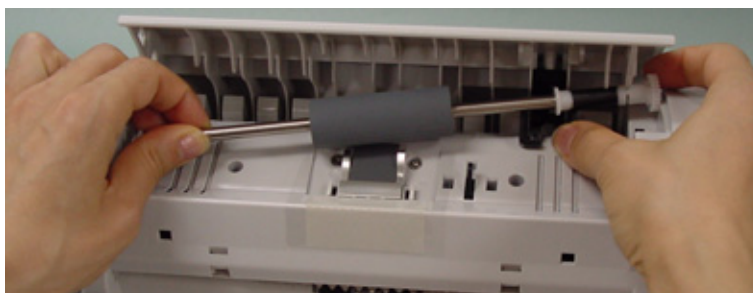
3. Remove the Pick roller unit from the scanner.
 - 1) Pinch the fixture with your fingers with another hand holding the Pick roller unit.



- 2) Pull the Pick roller unit to the fixture's side.



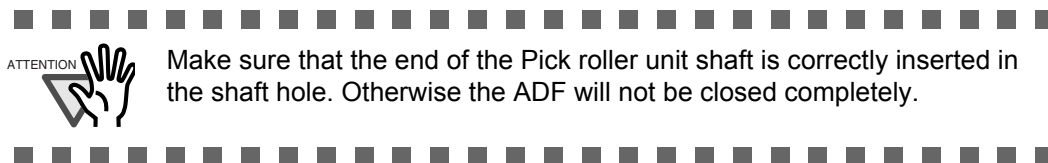
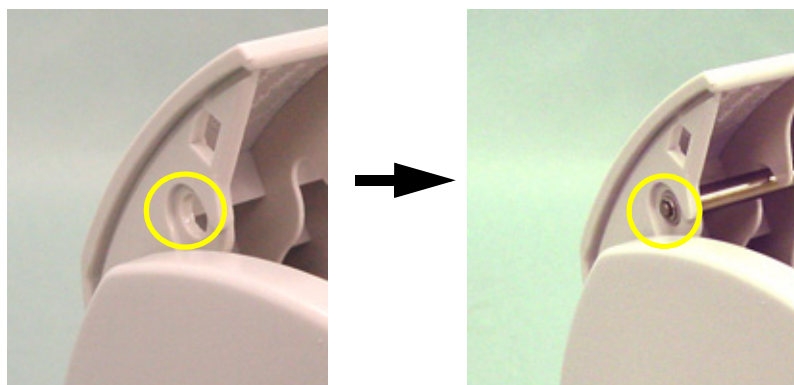
⇒ The Pick roller unit is removed downwards.



4. Attach a new Pick roller unit to the scanner.

Attatch a new Pick roller unit to the scanner in reverse order of removing.

- 1) Set the Pick roller unit inserting an end of shaft into the shaft hole correctly as shown in the following photos.



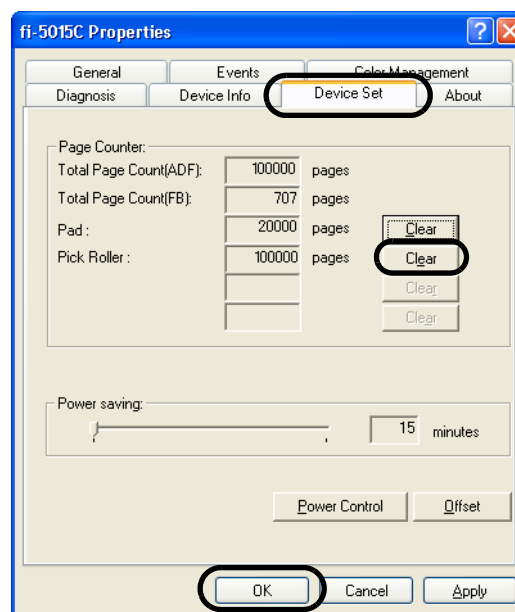
- 2) Lock the fixture in the original place to fix the Pick roller unit.

5. Press the center of the ADF to close it until it clicks.

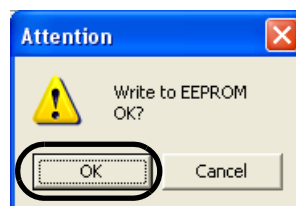


6. Reset the Pick roller counter.

- 1) Check that the scanner is connected to your PC and turn on the scanner.
- 2) Open the [Scanners and Cameras] from the control panel of your PC.
- 3) Open the [Properties] of [fi-5015C] from the [Scanners and Cameras].
⇒ The [Properties of fi-5015C] dialog box appears.
- 4) Click the "Device Set" tab.



- 5) After clicking the [Clear] button besides "Pick roller" in "Page Counter", click the [OK] button.
⇒ The following window appears.



Click the [OK] button.
The Pick roller counter returns to "0".

Chapter 4

TROUBLESHOOTING

This chapter describes how to remedy troubles and items to check before contacting the agent where you bought the scanner.

4

4.1 Error Indications in the Function Number Display	54
4.2 Troubleshooting.....	56

4.1 Error Indications in the Function Number Display

When any error occurs, the operator panel indicates "U" followed by a number alternately for temporary errors, or "E" followed by a number for device alarms (permanent error).

Temporary errors can be resolved by the operator, but the device alarm requires recovery works by support engineers.

When the Error Recovery Guide is installed on your PC and if any error or device alarm has occurred, this software displays information such as error names and error codes regarding the error/alarm. Take notes of the information and click [Details] on its window to learn detailed information for troubleshooting.

■ Temporary Errors:

A number appearing in alternation following the "U" refers to the following type of errors:

Indication	Meaning	Solution
U0	Shipping lock error occurred.	Confirm that the shipping lock is released.
U1	A paper feed error occurred.	<ol style="list-style-type: none">1. Remove the jammed documents. (Refer to "3.1 How to clear the paper jam" on page 38.)2. Confirm that the documents meet the paper conditions for scanning. (Refer to "2.2.1 Checking document condition" on page 12.)
U9	ADF error	Turn OFF the scanner power. Confirm/ Connect the ADF cable, then turn on the scanner power.



The Error Recover Guide is stored in Setup DVD-ROM. For installing the application software, refer to "2.1 Installing the Scanner Application" in fi-5015C Getting Started.

■ Device alarms:

A number appearing in alternation following the "E" refers to the following type of device alarms:

Indication	Meaning	Solution
E0	Shipping lock error occurred.	Confirm that the shipping lock is released.
	Flatbed motor malfunction	When you encounter any alarm, turn off and on the scanner. If the alarm is still displayed on the Function Number Display, contact the dealer where you purchased the scanner or an authorized FUJITSU scanner service provider.
E2	Trouble in the optical system	
E7	Trouble occurred in the internal memory (EEPROM).	
Eb	A LSI error	
Ec	An error in the memory	
Ed	An error with USB chip	

4.2 Troubleshooting



Be careful, the inside of ADF (automatic document feeder) may become hot during the operation.

If a problem occurs, check the following items before contacting the manufacturer's authorized service center.

Symptom	Check this item	Remedy
Scanner does not turn on.	Is the main switch turned on?	Turn the main switch on.
	Have you pushed the power button?	Push the power button.
	Are the AC cable and AC adapter properly connected to the scanner?	Correctly connect the AC cable and the AC adapter.
		Disconnect the AC cable and the AC adapter from the scanner, then connect them again. If this does not restore the power supply, contact the store where you purchased the scanner or an authorized FUJITSU scanner service provider.
	Is Windows normally started up?	Push the power button again after completely starting up Windows.
Scanning does not start.	Are the documents loaded correctly on the ADF paper chute?	Load the document correctly on ADF paper chute.
	Is the ADF closed completely?	Close the ADF completely.
	Is the USB cable properly connected?	Correctly connect the cable. (When a USB hub is used, check the hub's power supply.)
	Does the Function Number Display indicates an alarm or an error?	When the Function Number Display indicates an alarm or an error, refer to the Operator's Guide "4.1 Error Indications in the Function Number Display" (page. 54) for removing the alarm or the error.
	Does the alarm state remain displayed even after the scanner has been turned off and back on again?	Turn off and on the power button. If this does not eliminate the alarm state, contact the store where you purchased the scanner or an authorized FUJITSU scanner service provider.
Vertical lines appear in the generated image of the scanned image.	Is the glass dirty?	Clean the glass following the instructions in the Operator's Guide "3. Maintenance".
The generated image shifts or is distorted.	Are the documents loaded correctly?	Load the documents correctly.
Quality of generated image is unsatisfactory.	Are the glass or sheet guides (a white location) clean?	Clean dirty locations.

Symptom	Check this item	Remedy
Multi feed* frequently occurs.	Does the document satisfy the "Document Quality" described in Section 2.2.1?	Scan the documents by Flatbed.
	Are the documents set properly in the ADF paper chute?	Fan the documents before scanning. Correctly align the document stack and load them on the ADF paper chute. Refer to Section 2.2.2 for details.
	Is the document stack thicker than 4mm?	Reduce the number of sheets in the document stack to 4 mm thickness or less.
	Is the Pad ASSY dirty?	Clean the Pad ASSY. Refer to the Operator's Guide "3.2.3 Cleaning the ADF".
	Is the Pad ASSY worn out?	Replace the Pad ASSY. Refer to the Operator's Guide "3.3.3 Replacing the Pad ASSY".
Paper is not fed (paper feed error occurs frequently, or document stops midway).	Does the document satisfy the "Document Quality" described in Section 2.2.1?	Scan the documents by Flatbed.
	Is the thick document placed on the Flatbed?	Remove the document from the Flatbed.
	Is the Pick roller dirty?	Clean the Pick roller. Refer to the Operator's Guide "3.2.3 Cleaning the ADF".
	Is the Pick roller worn out?	Replace the Pick roller ASSY. Refer to the Operator's Guide "3.3.4 Replacing the Pick Roller".
The generated image are elongated.	Is the Pick roller dirty?	Clean the Pick roller. Refer to the Operator's Guide "3.2.3 Cleaning the ADF".
There is a shadow on the leading edge of the generated image.	Are the Pinch rollers dirty?	Clean the Pinch rollers. Refer to the Operator's Guide "3.2.3 Cleaning the ADF" on page 41..
	Have you adjusted the offset (the scanning starting position)?	Adjust the [Sub-scan Setting] on [Scanners and Cameras] in the control panel.

* "Multi feed" means that more than 2 papers are fed at the same time.

APPENDIX A

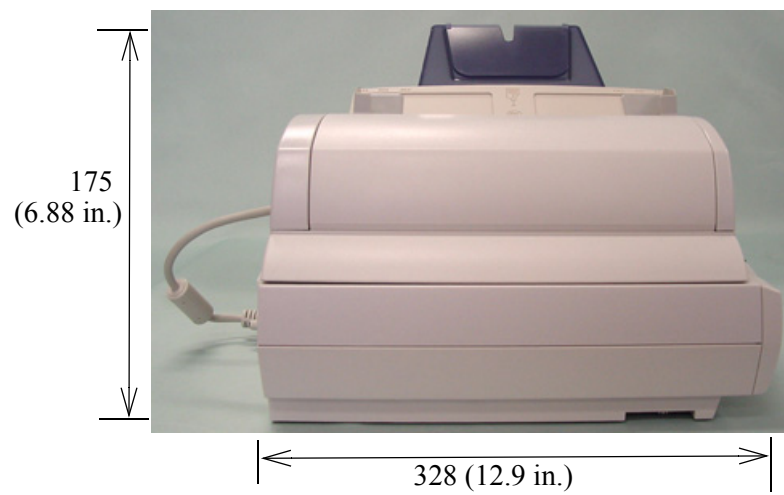
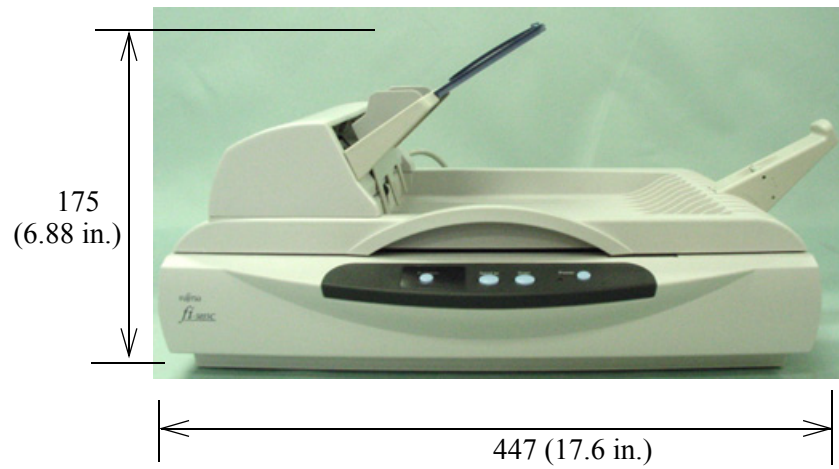
SCANNER SPECIFICATIONS

■ Basic Specifications

Item		Specifications		
Dimension (mm)		Width	Depth	Height
		328 (12.9 in.)	447 (17.6 in.)	175 (6.9 in.)
Weight(kg)/lb		5.5 (11.7 lbs)		
Input power	Voltage	AC100 to 240V		
	Phases	Single		
	Frequency	50 / 60Hz		
Power consumption	During operation	24W or less		
	Stand by	5.3W or less		
Operating environment	Device status	At Operation	At Stand by	At shipping
	Temperature	5 to 35°C (59 to 95 °F)	-20 to 60 °C (-4 to 140°F)	-20 to 60 °C (-4 to 140 °F)
	Humidity	10 to 85%	8 to 95%	8 to 95%

A

■ Dimensions



Unit: millimeters

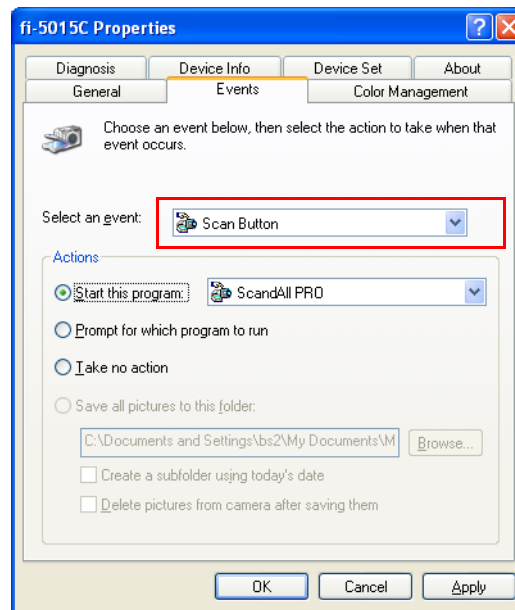
APPENDIX B

Using [Scan] or [Send to] button

■ Settings on the Personal Computer

By setting the link of the application software to the [Scan] or [Send to] button, you can launch the linked application by simply pushing the button.

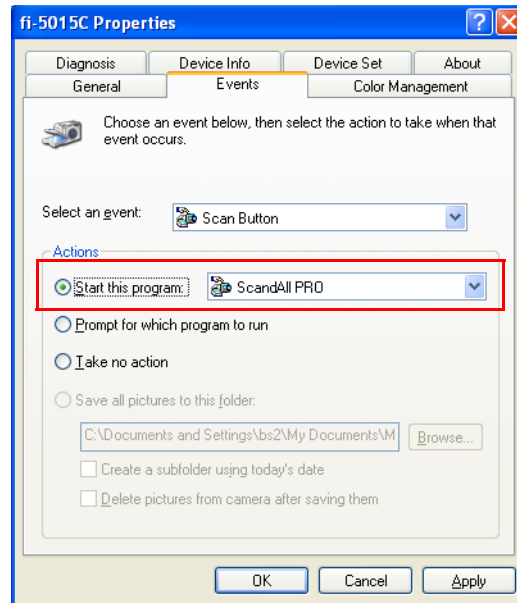
1. Select [Start]-[Control Panel].
2. Select [Scanners and Cameras]-[Properties].
3. Select the [Events] tab.
4. Select an Event. For the case of Windows XP, select an event for starting up any application from the [Select an event] menu.



The events available for this function are:

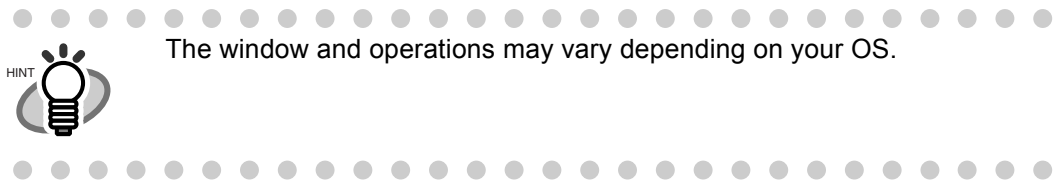
- Scan Button (When pressing the [Scan] button)
- Send to 1- 9 (When pressing the [Send to] button)

5. Select the application with its process, executed by the event. For the case of Windows XP, click [Start this program] under [Actions] and select the application and process from the menu.

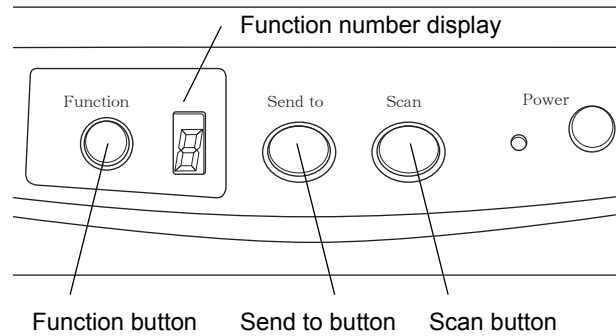


6. Click the [OK] button.

If you are using ScandAll PRO, refer to "ScandAll PRO V2.0 User's Guide".




■ Settings on the Scanner



- To use the [SCAN] button:
You can use this button as is; no special settings are required.
⇒ Simply pressing the [SCAN] button starts the linked application.
- To use the [Send to] button:
Press the [Function] button to change the number on the function number display.
Choose the same number as an event number you selected (Send to 1 - 9) on the computer.



- For example, when you want to execute an event "Send to 2", choose  on the function number display.
- Every time you press the [Function] button, the number displayed will change in the order presented below.
"1, 2, 3...9, C, 1, 2, 3,..."

⇒ Simply pressing the [Send to] button starts the linked application

APPENDIX C

GLOSSARY OF TERMS

A4 size

A standard paper size. Paper size is 210 x 297 mm.

A5 size

A standard paper size. Paper size is 148 x 210 mm.

A6 size

A standard paper size. Paper size is 105 x 148 mm.

A7 size

A standard paper size. Paper size is 74 x 105 mm.

A8 size

A standard paper size. Paper size is 53 x 74 mm.

ADF (Automatic Document Feeder)

A unit that allows the user to scan a number of pages consecutively. Fed documents are transported from the ADF paper chute (or hopper) to the Stacker. Actual scanning operation is executed by the mechanism inside of this unit. Backside reading = Back-side scanning Refers to reading the backside of the document, specifically in Duplex reading mode.

Automatic separation

An image processing method in which the scanner automatically detects difference between text and photos, and chooses the threshold accordingly. This function allows the scanner to switch between line mode and half tone mode in one pass.

Automatic size/skew detection

A function that automatically detects the documents' page size and adjusts output data to the detected page size. Document skewing is automatically detected and corrected for the output image.

Brake roller

A roller that prevents two or more sheets of paper from being fed simultaneously into the ADF.

Brightness

Refers to the brightness of scanned images in this manual.

Canadian DOC Regulations

"A standard issued by Industry Canada, a department of the Canadian government, which sets out the technical requirements relative to the radiated and conducted radio noise emissions from digital apparatus. "

CCD (Charged Coupling Device) Image Sensor

A semiconductor device inside the scanner that registers light reflected from the original image and converts it into a digitized (electronic) form. CCD technology is the basis of high-quality image acquisition in scanners, cameras, and other specialized devices.

Cleaning paper

Sheets used with the F1 cleaner for cleaning the rollers (pick rollers, pinch rollers, etc.) and complete document path in the scanner. Used in daily maintenance of the low volume production scanner to reduce paper transport problems. Note: these sheets are not meant to replace the more thorough periodic cleaning of the scanner.

Cleaning sheet

Adhesive sheets used for cleaning the rollers (pick rollers, pinch rollers, etc.) and complete document path in the scanner. Used in daily maintenance of the high volume production level scanner to reduce paper transport problems. Note: these sheets are not meant to replace the more thorough periodic cleaning of the scanner.

Color balance

Balance of colors in images.

Default settings

Pre-set values for optional menus.

Density

In this manual, refers to a measurement of the depth of the display.

Dither

The process by which a group of dots is arranged to represent a shade of gray. The pre-determined dot pattern simulates shades of gray. This scanning process offers the advantage of reduce memory requirements compared to multilevel gray.

Document jam

A warning that appears when document is jammed in the transport unit, or transportation is interrupted because the paper is slipping.

dpi

Dots per inch. Number of dots lined along one inch A measurement of resolution normally used for scanners and printers. Higher dpi means better resolution.

Driver software

In this manual, driver software refers to software that allows the scanning application software to communicate with the scanner.

Dropout color

A color which is used in the document but does not appear in the read image.

Duplex reading mode

A mode for scanning both sides of the document in one pass.

Eject rollers

Rollers that transport documents from the ADF onto the Stacker.

Energy Star

ENERGY STAR is an international standard for energy-efficient electronic equipment. It was created by the US Environment Protection Agency (EPA) in 1992. The standard program has now been adopted by several countries around the world.

Equipment Error

An error that cannot be fixed by the operator. The operator should call the manufacturer for service.

Error diffusion

High-quality halftone (pseudo-grayscale) image production based on black-and-white pixel binarization. A pixel's optical density and that of adjacent pixels are summed, with black pixels relocated in their order of density as they relate to adjacent pixels. The purpose of this technique is to minimize the average error between read and printed densities. Density data for adjacent pixels is modified by diffusing errors on the objective pixel into several pixels, which are then binarized. This maintains high grayscale levels and resolution during reading, while suppressing more patterns by dotted halftone images such as newspaper photographs.

FCC

Acronym for "The Federal Communications Commission", an independent United States government agency which is in charge of regulating interstate and international communications via radio, television, wire, satellite and cable. The Part 15 of the FCC regulations mentioned in this manual is designed to prevent harmful interferences on radio communication of radio receivers and other devices which radiate radio frequency energy, and provides for the certification of radio receivers. It also provides the certification of low power transmitters and the operation of certificated transmitters without a license.

Feeds rollers

Rollers that feed documents through the ADF.

Filtering

A correction method that improves the read quality of handwritten documents. The read quality of images written in pencil or ball-pointed pen depends on the reflective light characteristics of the specific ink or lead used. Dropped pixels may produce outlines, gaps, or thin, barely connected lines due to uneven optical density. Filtering detects areas lighter than their surroundings and increases their density to improve image clarity.

Flat bed An input device of the scanner, where documents are placed and scanned. Generally used for scanning pages out of a book, or paper that is out of the feeding specification of the ADF. Also used to scan a small volume of documents by manual operation.

Flatbed

An input device of the scanner, where documents are placed and scanned. Generally used for scanning pages out of a book, or paper that is out of the feeding specification of the ADF. Also used to scan a small volume of documents by manual operation.

Gamma

A unit of changes of images' brightness. It is expressed as a function of the electric input power to devices (scanner, display, etc.) and an image's brightness. If the gamma rate is larger than 1, the brightness of an image increases and vice versa. In order to adjust the brightness of an image close to the original, generally the gamma value is set to 1.

Grayscale

A method for realizing the gradation from black to white on the scanned image. For example, when scanning monochrome documents, the computer recognizes the documents as sets of black and white dots. In the Gray scale method, each dot contains data regarding density of black. The original gradation of the documents is realized as the gradation of the density data.

Halftone processing

Any method used to reproduce a photograph which includes a shade as an image composed of dots, namely, a binary image. Dithering and error diffusion processing are examples of halftone processing.

Image emphasis

Density is decreased for lighter but not completely white areas adjacent to black areas. Weakening this emphasis eliminates spot noise or produces softened images.

Image processing

An image is scanned with specified parameters.

Interface

The connection that allows communication from the computer to the scanner.

Inversion (Reverse-image reading)

In reverse-image reading, data is changed from black to white and vice versa.

IPC preset mode

While reading binary images, it is necessary to set the scanner according to the quality of the sheet to be read. In this mode, these settings can be performed in advance by corresponding each setting to a pattern number.

ISIS (Image Scanner Interface Specification)

A standard of API (Application Program Interface) or protocol for imaging devices (scanners, digital cameras, etc.) developed by Pixel Translations, a division of Captiva Software. In order to use imaging devices designed on the ISIS standard, it is necessary to install the driver software of the same standard.

Jaggy images

Images that have sharp projections or irregular shape on their edges.

Job separation sheet

A sheet inserted between documents in a batch for separating different jobs.

Landscape

A document is transported and read with the short side parallel to the moving direction.

Landscape orientation

A document is transported and scanned with the long side vertical to the moving direction.

Letter size

A standard paper size used in the U.S.A. and other countries. Paper size is 8-1/2 x 11 inches.

Linedrawing mode

Selecting linedrawing mode makes threshold and contrast settings effective but prevents brightness from being set. The specified threshold value determines whether black or white pixels are scanned. Line drawing mode is therefore appropriate for scanning text and line art images.

Multi Feed detection

A scanner function which detects accidental feeding of multiple sheets into the ADF. This can be set as both enabled/disabled.

Mirror image

The read image is symmetrically flipped to produce a mirror image of the original detected in the main scanning direction.

Moire Patterns

Recurrent patterns on scanned images caused by incorrect settings of angles.

Noise removal

Isolated noise from an image appearing as black spots in white areas and voids in black areas is removed to improve image quality.

Removes particles from the document image. Common particles include toner and fax particles. Noise reduction works via an algorithm that removes pixels up to 5 x 5 dots apart. A dot is 1/400 inch. A particle can be distinguished from a character as it is not connected to another dot within 5 pixels.

OCR (optical character recognition)

Devices or technologies for identifying characters on documents and converting them into text data that can be manipulated. The documents are checked by light and the differences of light reflection are recognized as character shapes.

Operator panel

A panel consists of indicators and buttons. The operator panel is used to control scanner operations such as, selecting features, and changing settings.

Optical sensor

A type of sensor for detecting Multi Feeding by light transmission. It also detects multi feeding by recognizing differences in length of documents.

Outline extraction

The boundary between black and white areas is traced and the outline extracted for closed areas.

Pad ASSY (Pad Assembly)

This part is used to separate a sheet of paper from a batch before feeding documents into the ADF. This assembly is made out of rubber.

Photograph mode (White level follower OFF)

Selecting photograph mode makes brightness and contrast settings effective but prevents the threshold from being set. With photograph mode, the darkness of image corresponds to the black-pixel density, making it suitable in scanning images such as photographs having gradations.

Pick roller

Roller(s) that picks the page from the batch of paper in the paper chute and feed it into the ADF.

Pick start time

The period from the manual insertion of the document until picking starts after the document passes the hopper empty sensor.

Pixel (Picture Element)

The tiny dots that make up a scanned image.

Portrait

Orientation of documents or images. Documents/images are set or displayed vertically.

Portrait orientation

A document is transported and read with the long side parallel to the moving direction.

Resolution

The measure of the details or grain of images displayed on a computer screen. As a metric of the resolution, dpi is customarily used.

SCSI (Small Computer System Interface)

An abbreviation for "Small Computer System Interface". SCSI is a standard for interfaces, used to connect devices such as hard disks, scanners, etc. Up to seven devices can be connected through this interface (daisy chain). The data transfer rates are different between "Fast SCSI" (Max. 10MB/sec.) and "Wide SCSI" (Max. 20MB/sec.).

SCSI-ID

Used to specify a particular SCSI device when the initiator selects a target or the target reconnects to the initiator.

Separation roller

A roller that separates the sheets of paper from each other.

Simplex reading mode

A mode for scanning only the front side of the document.

Smoothing

A process that eliminates "jaggies" from slanted lines and curves. Irregular convexities are deleted and irregular concavities filled in. This is useful in OCR applications, for example.

Storage temperature/humidity

The temperature and humidity levels necessary for proper storage of the scanner.

Temporary Error

An error that can be fixed by the operator.

Terminator

Devices with a SCSI interface can be daisy-chained. A resistor that includes terminal circuits needs to be placed at both ends of the SCSI chain when devices are daisy-chained. If a device (such as a scanner) is the last device in a chain, leaving an interface connector unused, a Terminator therefore must be attached to provide those terminal circuits.

Third Party Interface

Used to install optional board provided by Fujitsu or interface board manufactured by a third party.

Threshold

A value used as a metric for judging a color as black or white. For scanning an image with gray gradation, this value must be defined. The threshold setting determines which pixels are converted to black and which will become white.

TUV

"An institution that controls products for conformity with various standards of security, usability and environmental matters. "

TWAIN (Technology Without Any Interesting Name)

A standard for API (Application Program Interface) or protocol for imaging devices (scanners, digital cameras, etc.) developed by TWAIN Working Group. In order to use devices that comply with this standard, it is necessary to install driver software based on the same standard.

Ultrasonic sensor

A type of sensor for detecting multi feeding by ultrasonic sound. Scanners detect multi feeding by recognizing differences in the amount of ultrasonic waves that penetrates the documents.

USB (Universal Serial Bus)

An abbreviation for "Universal Serial Bus". A standard for interfaces used to connect devices such as key boards, scanners, etc. Up to 127 devices can be connected through this interface. USB devices can be plugged/unplugged without turning off their power. Data transfer rates are different between the "Low speed mode" (1.5Mbps) and "High speed mode" (Max. 12Mbps).

White level follower

A function to correct the difference between white colors in unbleached paper (e.g. wood containing paper, etc.) and in scanned images.

White Reference Stripe

The white part located in the ADF that defines the lightest area in an image, causing all other areas to be adjusted accordingly.

INDEX

A

ADF (automatic document feeder) 2

C

Checking document condition 12

Cleaning Materials 39

 Cleaner F1 39

Configuration Window of ISIS

Scanner Driver 31

F

Flatbed 3

Function number display 5, 8

H

How to use the Scanner Driver 22

I

ISIS Scanner Driver 28

L

Loading Documents on the ADF for

Scanning 12

Loading Documents on the Flatbed for

Scanning 17

P

Paper jam 38

Paper layout (ISIS) 32

Paper Layout (TWAIN) 18

Paper Size (ISIS) 32

Paper Size (TWAIN) 18, 20, 25

Power save mode 11

R

Remedying Common Troubles 56

Replacing the Pad ASSY 47

Replacing the Pick Roller 50

Reset the pad counter 48

Reset the Pick roller counter 52

Resolution (TWAIN) 25

S

Scan (button) 5

Scan Type (ISIS) 32

Scan Type (TWAIN) 20, 25

Scanner specifications 1

Scanning Documents 19

Send to (button) 5

Setting Window for TWAIN Scanner

Driver 25

Shipping lock 4

Side guide 2, 16

T

Troubleshooting 53

Turning ON/OFF the Scanner 8

TWAIN Scanner Driver 22

U

USB connector	3
Using the (Scan) or (Send to) button	3

fi-5015C Image Scanner Operator's Guide

P3PC-1592-05ENZ0

Date of issuance: October, 2011

Issuance responsibility: PFU LIMITED

- The contents of this manual are subject to change without notice.
- PFU LIMITED is not liable whatsoever for any damages resulting from the use of this scanner and procedures described in this manual, profit loss due to defects, and any claims by a third party.
- Copying of the contents of this manual in whole or in part and copying of the scanner application is forbidden under the copyright law.