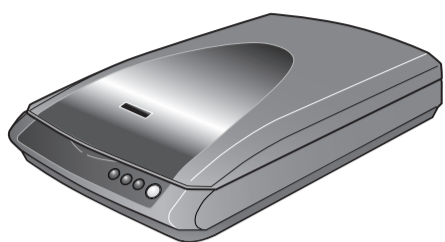


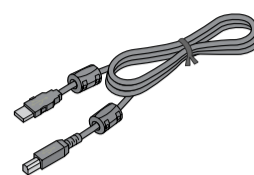
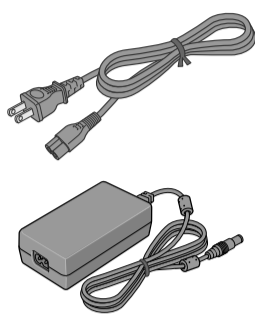
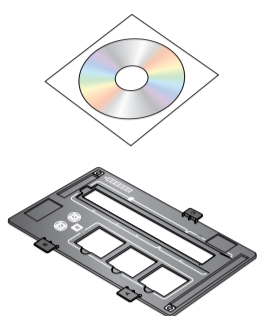
Start Here

Epson® Perfection® 3490 Photo • Epson® Perfection® 3590 Photo

1 Unpack



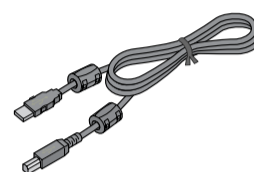
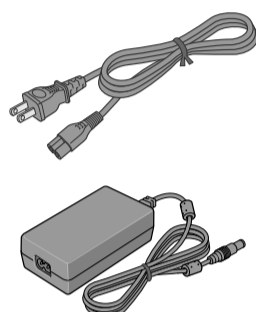
Perfection 3490 Photo



Note: Do not connect the USB cable yet.



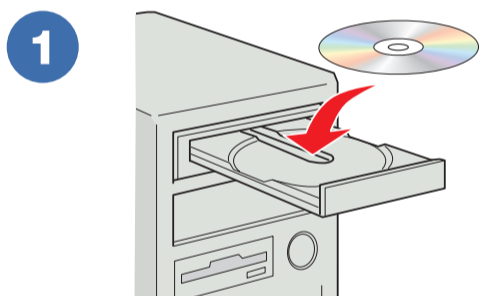
Perfection 3590 Photo



Note: Do not connect the USB cable yet.

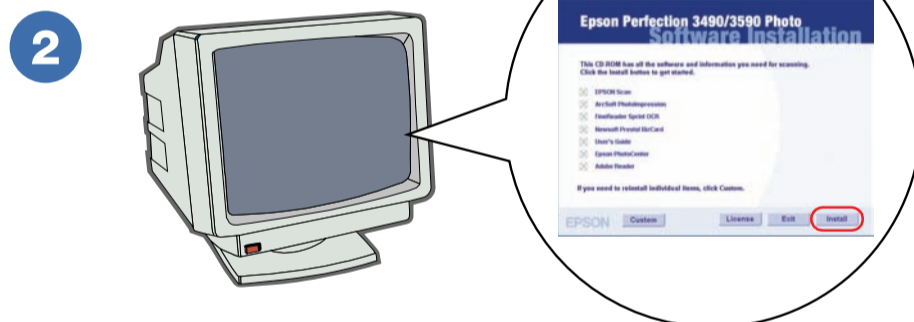
Note: The setup illustrations show the Perfection 3590 Photo scanner, but the instructions are the same for the Perfection 3490 Photo.

2 Install software



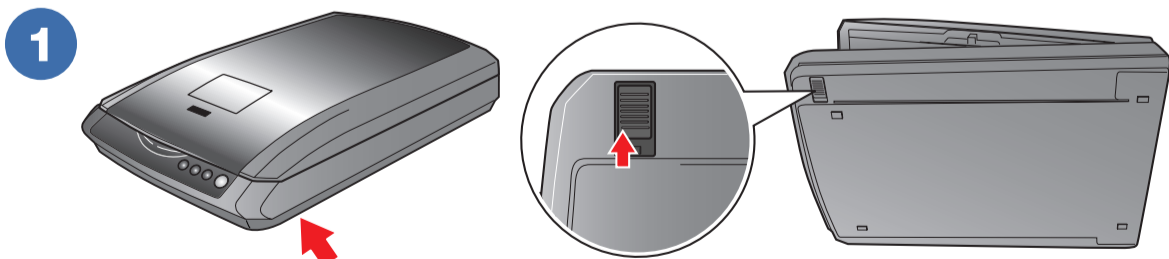
Insert the Scanner Software CD.

Windows:® The installer starts automatically.
Macintosh® OS X: Double-click the CD-ROM icon on the desktop.



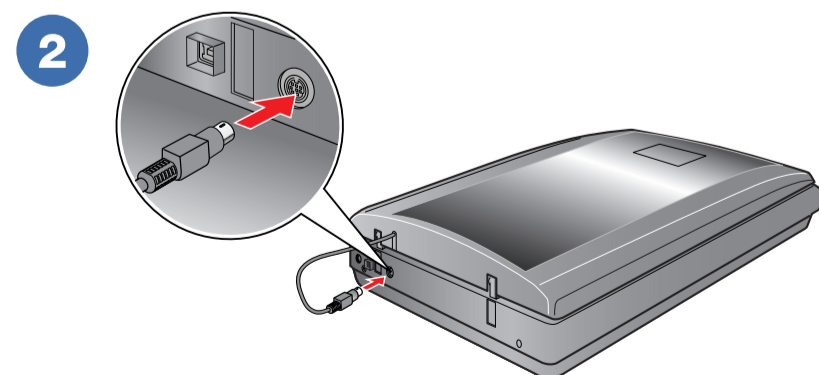
Click **Install** and follow the on-screen instructions.

3 Unlock and assemble



Unlock the transportation lock.

Note: Do not connect the USB cable yet.



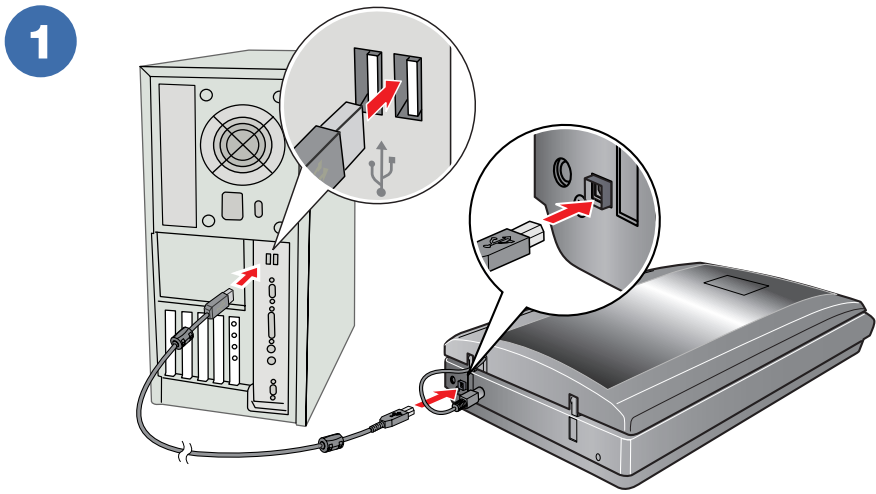
Connect the cover cable.

Printed in XXXXXX XX.XX-XX XXX

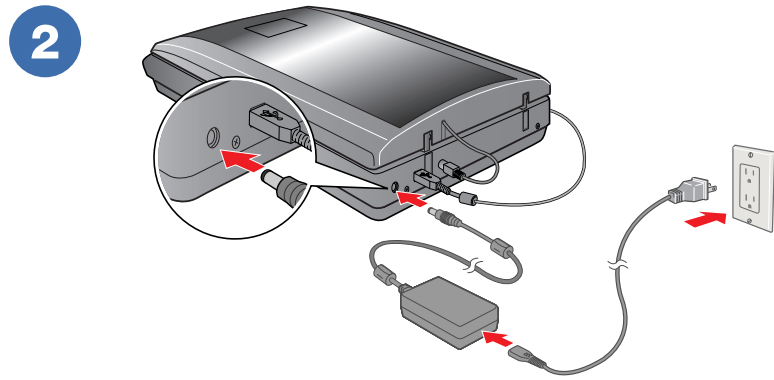


410081300

4 Connect and turn on

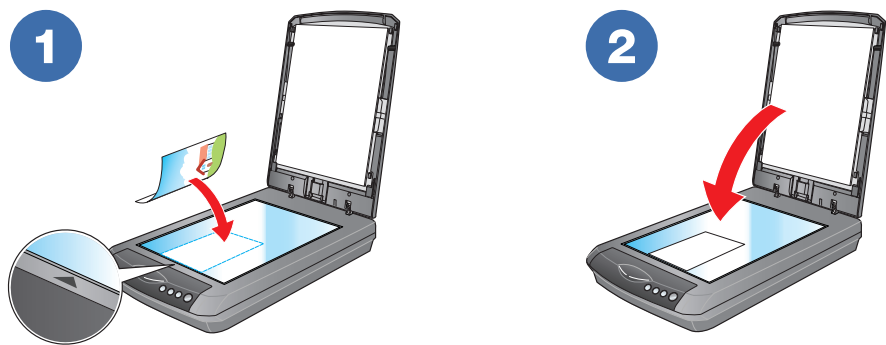


Connect the USB cable.



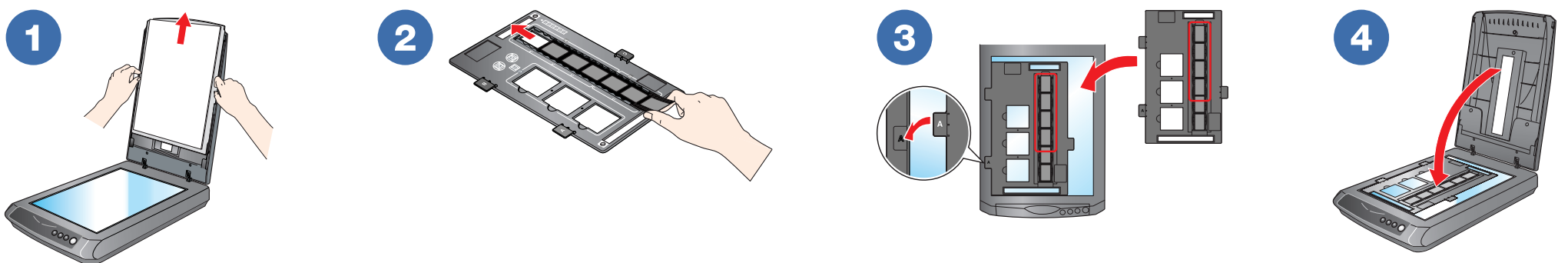
Connect the power adapter and cable to turn on the scanner.

Place a document or photo

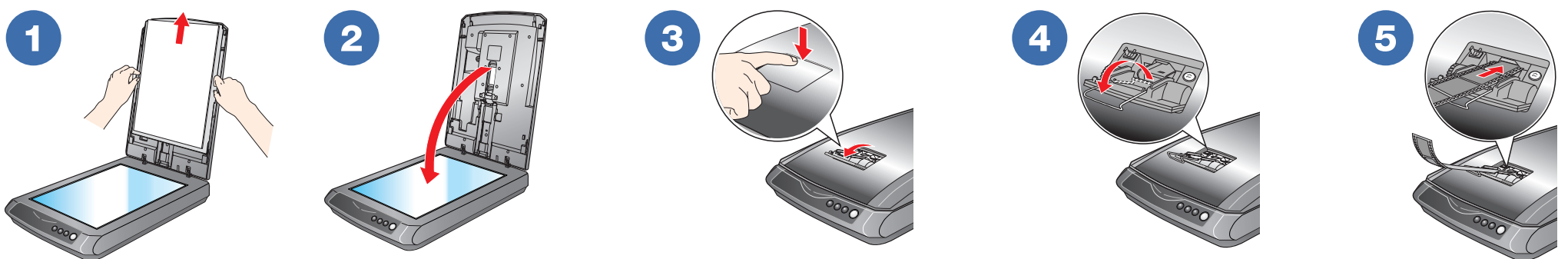


Place film

Perfection 3490



Perfection 3590

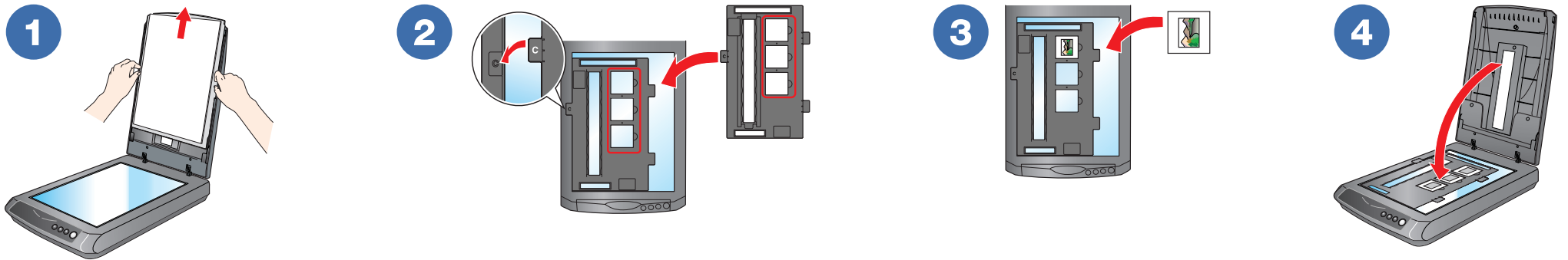


Caution: Make sure the film strip contains between 2 and 6 photos. Don't load folded or creased film

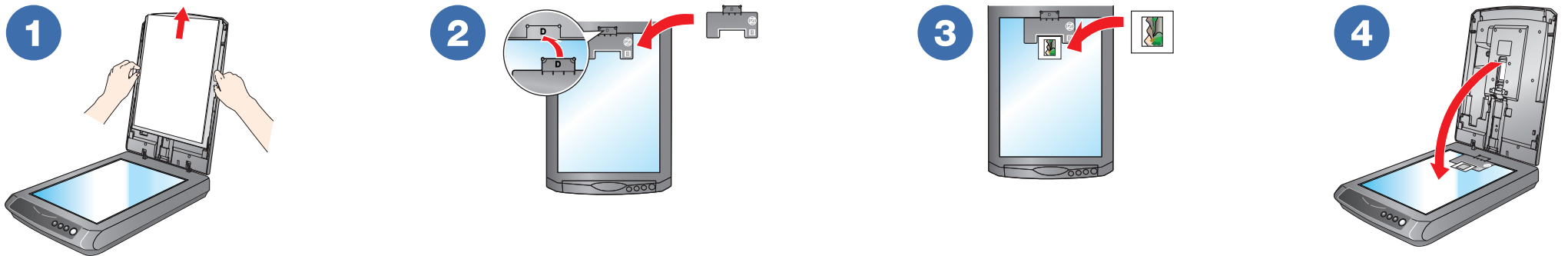
Slide in the film with the shiny base side facing down. The scanner automatically feeds the film into position.

Place slides

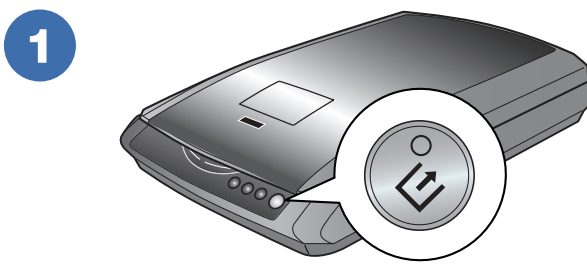
Perfection 3490



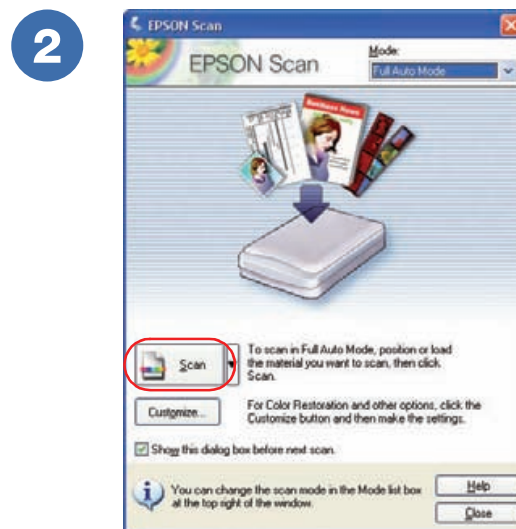
Perfection 3590



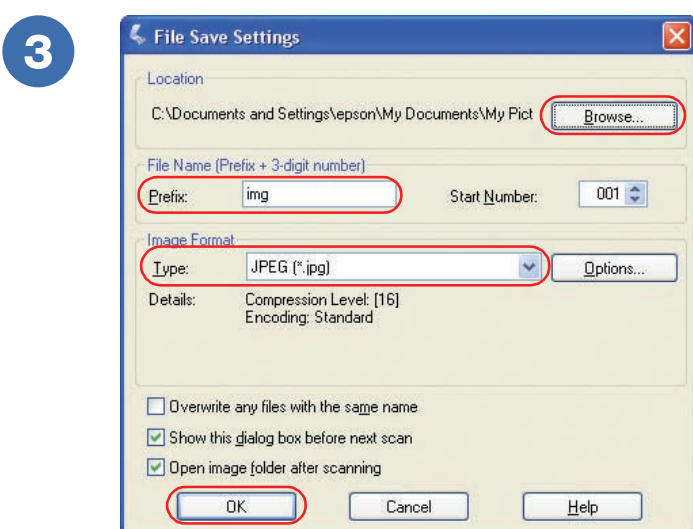
Scan



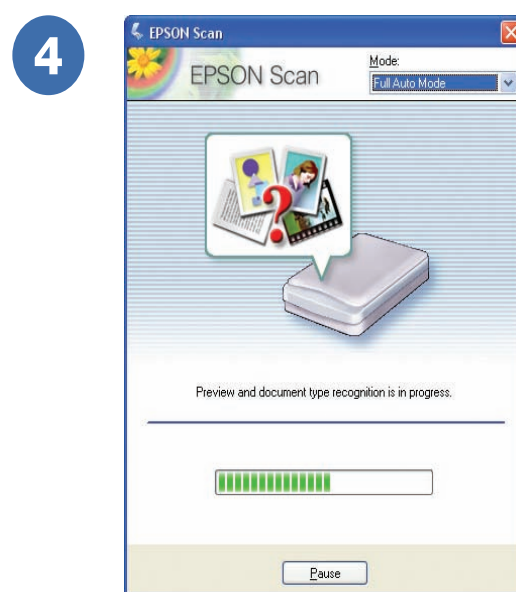
Press the  **Start** button.



Click **Scan**.



Select your file settings, then click **OK**.



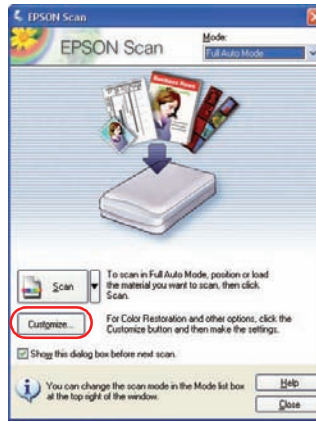
EPSON Scan scans in Full Auto Mode. Wait for your scan to finish or click **Pause** to change settings.

Do more

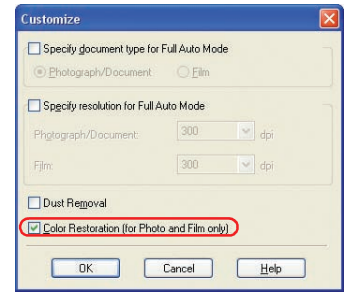
Restore color



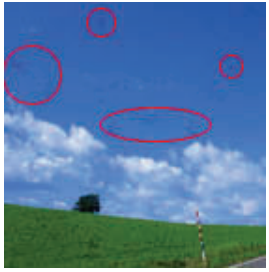
1



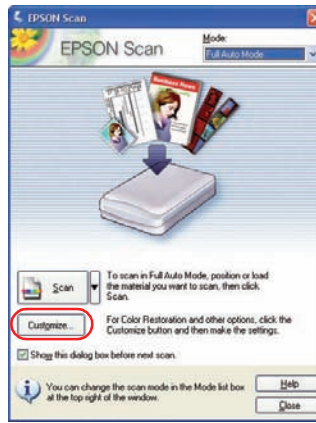
2



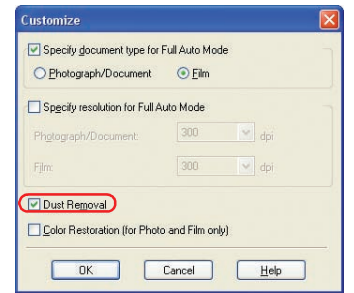
Remove dust from film/slides



1



2



Help

User's Guide

Double-click the **PERF3490P_3590P User's Guide** icon on your desktop.

Scanner software help

Click the **Help** or **?** button on your scanner software screen.

Epson Technical Support

Epson provides technical assistance 24 hours a day through the electronic support services and automated telephone services described below:

World Wide Web: From the Internet, you can reach Epson Support at <http://support.epson.com>.

Automated Telephone Services: To use Automated Telephone Services, you must have a touch tone telephone and call (800) 922-8911. Use Epson SoundAdvice Express Code **70655** to quickly select your scanner in SoundAdvice.

To Speak to a Customer Service Representative: Dial (562) 276-4382 (U.S.) or (905) 709-3839 (Canada), 6 am to 6 pm, Pacific Time, Monday to Friday. Toll or long distance charges may apply.

Software Technical Support

ArcSoft PhotoImpression®: (510) 440-9901, www.arcsoft.com, support@arcsoft.com

Presto! BizCard®: (510) 445-8616, Fax (510) 445-8601, www.newsoftinc.com, contactus@newsoftinc.com

ABBYY® FineReader® Sprint: (510) 226-6719, Fax (510) 226-6069, www.abbyyusa.com, support@abbyyusa.com

Epson is a registered trademark of Seiko Epson Corporation. Perfection is a registered trademark and Sound Advice is a service mark of Epson America, Inc. General Notice: Other product names used herein are for identification purposes only and may be trademarks of their respective owners. Epson disclaims any and all rights in those marks.

© 2005 Epson America, Inc. 4/05 CPD-19431