

COLOUR IMAGE SCANNER

# EPSON PERFECTION™ *2400 PHOTO*



## Scanning Excellence At Every Level

Incorporating an integrated Transparency Unit for strip film and slide scanning; a 2400dpi MatrixCCD and advanced on-chip microlens technology for higher resolution; and an on-board high-speed ASIC hyper processor and USB 2.0 Hi-Speed interface for increased speed, the EPSON Perfection 2400 Photo delivers exceptional performance for every scanning need.

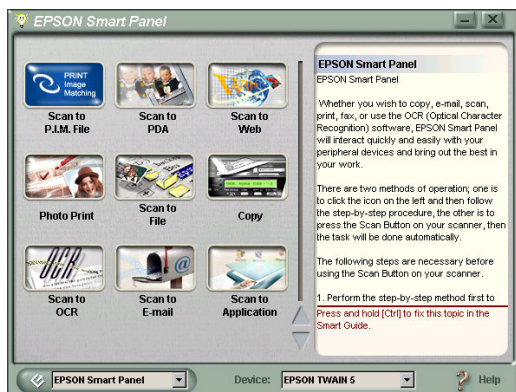
High speed and high resolution film scanning performance for demanding users

- High speed operation – with USB 2.0 Hi-Speed interface and on-board high-speed ASIC processor
- Advanced film scanning – Integrated Transparency Unit for 35mm slides and films
- High resolution – 2400dpi (4800 dpi sub-scan) with revolutionary microlens and MatrixCCD
- Total software solution – Bundled with Adobe Photoshop Elements, OCR and EPSON Smart Panel software
- Energy saving – Intelligent auto power off mode

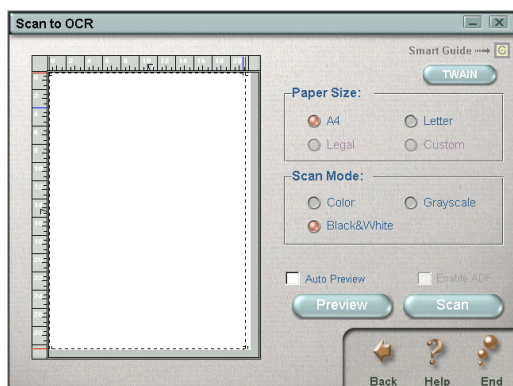


**EPSON®**





1



2

## High Speed and High Gradation

The EPSON Perfection 2400 Photo has been designed for speed. Increased light volume of the TPU, a USB 2.0 Hi-Speed interface and high-speed ASIC hyper processor boosts scanning speeds for documents, images, film and photographs. Complementing the scanner's high speed is its high gradation capabilities – 16-bits, giving every pixel amazing depth of colour.

## High Resolution

The combination of a revolutionary new microlens and MatrixCCD technology provides for exceptionally clear 2400dpi scanning. The EPSON Perfection 2400 Photo features a new microlens that achieves 30 per cent more sensitivity than non-lens type CCDs. And with the optical carriage driven at 4800dpi with Micro Step Drive, Dynamic Range Control, Simultaneous RGB scanning and On-Demand Pixel Optimisation the clarity of scanned images is complemented with extremely high colour consistency.



1. EPSON Smart panel Interface
2. Scan to OCR Applet
3. Control Panel
4. Adobe Photoshop Elements





## Processing Independence

With its own on-board Application-Specific Integrated Circuit (ASIC) hyper processor, the EPSON Perfection 2400 Photo processes images without relying on the vagaries of available computer processing power and RAM. This ensures scans are achieved consistently and provides strong support for high volume workflow.

## Unique TWAIN Driver

Utilising EPSON's new and unique TWAIN 5 scanner driver, scans made with the Perfection 2400 Photo benefit from reduced noise in shadow area and automatic removal of colour cast. This versatile and better than ever driver provides full support for P.I.M. (PRINT Image Matching), supporting photograph and film scans with colours more vivid than those restricted to the traditional sRGB colour space. It also supports Windows ICM colour management system for colour matching between printers, monitors and scanners.

## Advanced Film Scanning

High performance film and slide scanning is one of the many great strengths of the EPSON Perfection 2400 Photo. Its integrated Transparency Unit (TPU) and film holder ensures six-frame stripfilms and four slide frames can be scanned in a single operation. For larger film scanning – up to 4 x 5-inch – the Perfection 2400 Photo's optional TPU is a straightforward plug-in.

## Creative Software Suite

Software that enhances high quality scanning is par for the course with the EPSON Perfection 2400 Photo. EPSON's unique and feature-rich EPSON Smart Panel is complemented by Photoshop Elements for photo editing, Adobe Acrobat Reader and Presto!OCR, the critically acclaimed optical character recognition software (incorporated in Smart Panel). Combine this with EPSON Smart Panel features such as Copy, Scan to PDF, Scan to File, Scan to PDA, PhotoPrint, Scan to OCR, Web and E-mail and Scan to P.I.M.– and the EPSON Perfection 2400 Photo is an easy-to-use and extremely powerful one-stop total scanning solution.



Adobe® Photoshop® Elements

**SYDNEY**  
70 Gibbes Street  
Chatswood NSW 2067  
Tel: (02) 9903 9000  
Fax: (02) 9903 9177

**MELBOURNE**  
Level 1  
6 Riverside Quay  
Southbank VIC 3006  
Tel: (03) 9685 6555  
Fax: (03) 9686 1016

**BRISBANE**  
Level 3, Waterfront Place  
1 Eagle Street  
Brisbane QLD 4000  
Tel: (07) 3360 0219  
Fax: (07) 3360 0289

**PERTH**  
Suite 20, Level 3  
1060 Hay Street  
West Perth WA 6005  
Tel: (08) 9480 0418  
Fax: (08) 9480 0443

**ADELAIDE**  
Level 1, Carrington House  
61-63 Carrington Street  
Adelaide SA 5000  
Tel: (08) 8237 0518  
Fax: (08) 8237 0519

**AUCKLAND**  
245 Hobson Street  
Auckland NZ  
Tel: (09) 366 6855  
Fax: (09) 366 6865

**WELLINGTON**  
Level 6, City Tower  
95 Custom House Quay  
Wellington NZ  
Tel: (04) 473 3494  
Fax: (04) 473 4631


ABN 91 002 625 783  
08/02

Visit our website:  
[www.epson.com.au](http://www.epson.com.au)  
[www.epson.co.nz](http://www.epson.co.nz)

## PROFESSIONAL SCANNER EPSON PERFECTION™ 2400 Photo



### Specifications

<b>EPSON PERFECTION 2400 PHOTO</b>	B11B152031
<b>SCANNER TYPE</b>	Flatbed colour image scanner
<b>SUB-SCANNING METHOD</b>	Movement of scanning head
<b>PHOTOELECTRIC DEVICE</b>	
	6 line alternated Colour CCD with On-Chip MicroLens
<b>DOCUMENT SIZE</b>	216 x 297mm (A4 + Letter)
<b>LIGHT SOURCE</b>	White cold cathode fluorescent lamp
<b>OPTICAL RESOLUTION</b>	2,400 x 4,800dpi with Micro Step Drive
<b>OPTICAL DENSITY</b>	3.3D
<b>PIXELS/LINE</b>	61,200 pixels (20,400 x 3 colours)
<b>OUTPUT RESOLUTION</b>	
	Max. 12,800dpi (by 6,400dpi x 200% zoom) 50 to 6,400dpi (in single steps)
<b>ZOOM</b>	50% to 200% (in 1% steps)
<b>GRAYSCALE</b>	
	16-bit (65,536 grayscale levels) external 16-bit (65,536 grayscale levels) internal
<b>COLOUR</b>	
	48-bit (281,474 billion colours) external 48-bit (281,474 billion colours) internal
<b>SCANNING SPEED</b>	
MONOCHROME (Bi-level): (Draft mode)	
A4 300dpi	12 sec★1
COLOUR: (Draft mode)	
A4 300dpi	12 sec★2
<b>EMBEDDED IMAGE PROCESSING</b>	
GAMMA CORRECTION	CRT (A,B), Printer (A,B,C) User-defined 1 level
COLOUR CORRECTION	Dot Matrix Printer Thermal Printer Inkjet Printer CRT Display User-defined
BRIGHTNESS	7 levels
LINE ART	Fixed threshold
	TET (Text Enhanced Technology)
DIGITAL HALFTONING	Error diffusion (A,B,C) Dither (Resident) (A,B,C,D) Dither (User-defined) (A,B)
(Bi-Level, Quad-Level)	
AREA SEPARATION	AAS (Auto Area Segmentation)
<b>SUPPORTED PLATFORMS</b>	
USB 2.0 Hi-Speed	Microsoft® Windows® 98 / Me / 2000 Professional / XP Home Edition / XP Professional (pre-installed model or upgrade of Windows® 98 / Me / 2000 Professional pre-installed model) Mac OS® 8.6 to 9.x, Mac OS X 10.1.2 or later (Classic mode only) Mac OS® X Native Mode Support (see <a href="http://www.epson.com.au">www.epson.com.au</a> ). As per USB - IF Compliance Test (The USB part on the Perfection 1660 Photo supports both USB 1.1 and USB 2.0)
	
<b>INTERFACES</b>	USB (Type-B receptacle connector) x 1
<b>ENVIRONMENTAL CONDITIONS</b>	
TEMPERATURE	5° to 35°C (Operating)
HUMIDITY	10% to 80% without condensation (Operating)
<b>ELECTRICAL SPECIFICATIONS</b>	
VOLTAGE	AC220 ~ 240V
FREQUENCY	50 to 60Hz
POWER CONSUMPTION	Approx. 17W (Operating)

#### OPTIONAL 4" x 5" FILM ADAPTER

FILM ADAPTER B12B813173 (maximum 4" x 5" film)  
(this is not the same adapter that is standard with the Perfection 2400 Photo).

#### BUNDLED SOFTWARE

EPSON TWAIN 5  
EPSON Smart Panel  
Adobe Photoshop Elements  
Presto! PixExpress (PDA Software Required)  
Adobe Acrobat Reader  
Online User Guide  
Windows / Mac OS® 8.6 to 9.x, Mac OS® X 10.1.2 or later (Classic mode only)

#### SCANNING SPEED DATA PATTERNS

The thumbnail images below show the scanning patterns used to determine scanning speed specifications.



★1  
Black Text (MEMO) A4



★2  
Photo  
(Photo courtesy of ISO/JIS-SCID. Reprinted by permission.)

#### Scanning Speed Test System Configuration

CPU: Pentium 4 1.8GHz  
RAM: 256MB  
OS: Windows XP  
SIZE: A4  
MODE: Draft mode  
I/F: USB interface

Scanning speed test results vary according to system configuration, dpi setting, and scan mode setting. However, documents and photos other than those pictured above can be substituted without significantly affecting test results.



As an International ENERGY STAR Partner, EPSON has determined that this product meets the International ENERGY STAR guidelines for energy efficiency. EPSON is the registered trademark of SEIKO EPSON Corporation. EPSON STYLUS, PerfectPicture, MicroPiezo, AcuPhoto Halftoning, QuickDry are the trademarks of SEIKO EPSON Corporation. All other names and company names used herein are for identification purpose only and may be the trademarks or registered trademarks of their respective owners. EPSON disclaims any and all rights in those marks. All print samples shown herein are simulations. Specifications are subject to change without notice.

#### EPSON STYLUS PHOTO 1290 Inkjet Printer

#### Dazzling 6-Colour Output & 25 Year \* Print Life.

Whether you're scanning film or print images, our 6-colour EPSON STYLUS PHOTO 1290 printer will render every detail and colour nuance with absolute fidelity.

It offers borderless, edge-to-edge printing on roll-type EPSON Photo Paper, and can produce lightfast prints that retain their colour for over 25 years\*. It's also capable of high-speed bidirectional printing in all print modes, and boasts up to 2880dpi output with 4 pl (picolitre) Ultra Micro Dots and Variable-Sized Droplet technology.



\* Lightfastness Test Criteria - see [www.epson.com.au](http://www.epson.com.au) for details

**EPSON®**