



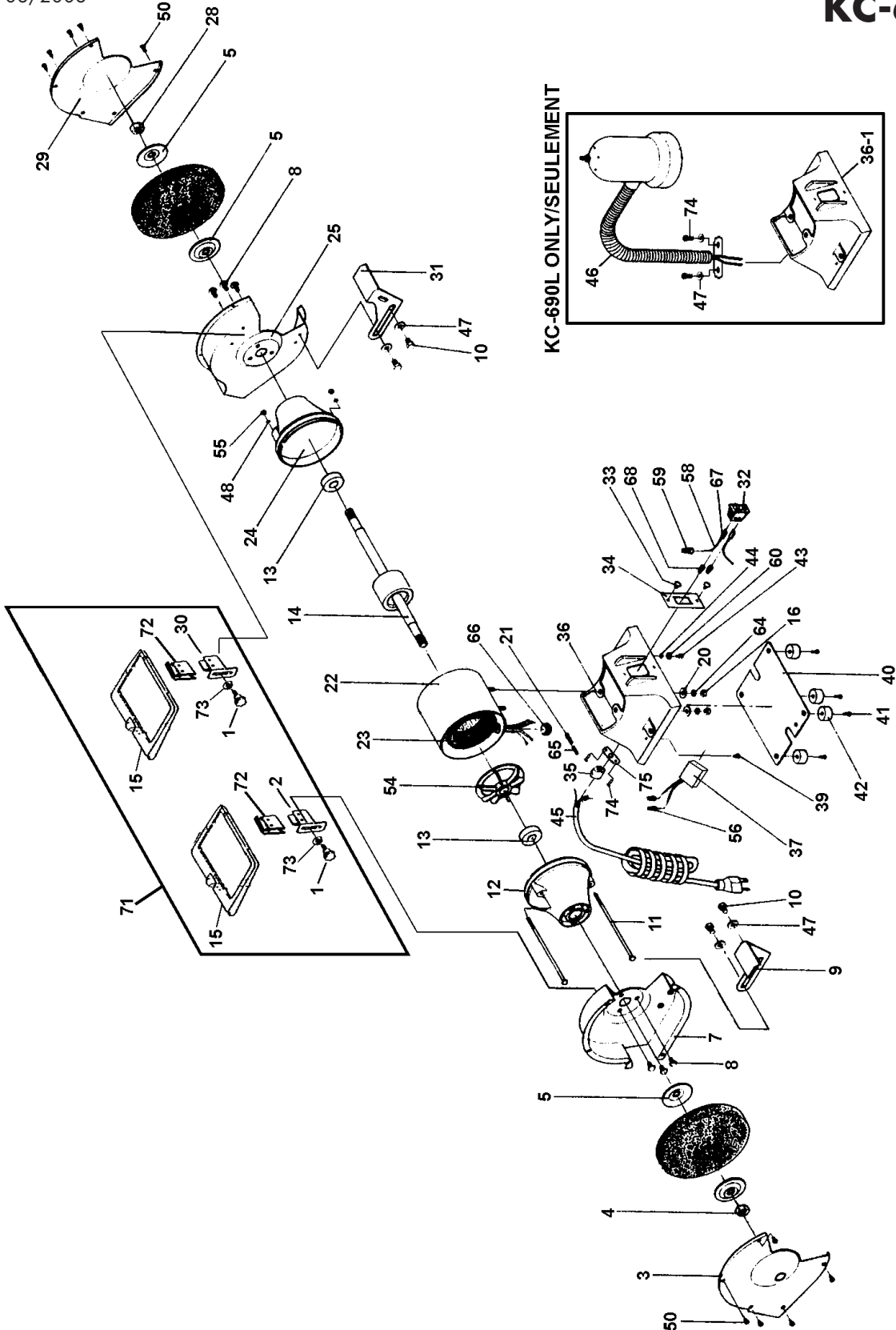
Service Manual / Manuel de Service

6" Bench Grinder Touret D'Établi 6"



Revised/Revisé 08/2008

KC-690(L)





Parts Pricing List / Liste de Prix des Pièces

KC-690(L)

| Diag. | Order # Com. | English Description | Description Française | Qty./Qté. | Price/Prix |
|-------|--------------|-------------------------|-----------------------------------|-----------|------------|
| 1 | 2506900010 | LOCK KNOB | BOUTON DE SERRAGE | 2 | \$3.62 |
| 2 | 2506900020 | SPARK BREAKER (LEFT) | BRISE ETINCELLES (GAUCHE) | 1 | \$3.85 |
| 3 | 2506900030 | WHEEL COVER (LEFT) | COUVERCLE DE LA MEULE (GAUCHE) | 1 | \$13.63 |
| 4 | 2506900040 | SPINDLE HEX. NUT (LEFT) | ECROU HEX. DE L'ARBRE (GAUCHE) | 1 | \$3.16 |
| 5 | 2506900050 | ARBOR FLANGE | BRIDE DE L'ARBRE | 4 | \$4.43 |
| 7 | 2506900070 | WHEEL GUARD (LEFT) | PROTECTEUR DE MEULE (GAUCHE) | 1 | \$17.65 |
| 8 | 2506900080 | RD. HD. SCREW | VIS A TETE RONDE | 6 | \$1.67 |
| 9 | 2506900090 | ADJUSTABLE REST (LEFT) | PORTE-OUTIL (GAUCHE) | 1 | \$5.58 |
| 10 | 2506900100 | HEX. BOLT | BOULON HEXAGONAL | 4 | \$1.55 |
| 11 | 2506900110 | SPECIAL LONG SCREW | VIS SPECIALE LONGUE | 2 | \$4.08 |
| 12 | 2506900120 | MOTOR END HOUSING | BOUT DU BOITIER DU MOTEUR | 1 | \$18.11 |
| 13 | 2506900130 | BALL BEARING | ROULEMENT A BILLES | 1 | \$11.44 |
| 14 | 2506900140 | ARMATURE | ARMATURE | 2 | \$44.45 |
| 15 | 2506900150 | EYESHIELD | PARE-ETINCELLES | 2 | \$4.54 |
| 16 | 2506900160 | HEX. NUT | ECROU HEXAGONAL | 2 | \$1.55 |
| 20 | 2506900200 | WASHER | RONDELLE | 1 | \$1.67 |
| 21 | 2506900210 | SCREW | VIS | 1 | \$1.67 |
| 22 | 2506900220 | MOTOR HOUSING | BOITIER DU MOTEUR | 1 | \$26.16 |
| 23 | 2506900230 | FIELD COIL | BOBINE D'ENTRAINEMENT | 1 | \$57.33 |
| 24 | 2506900240 | MOTOR END HOUSING | BOUT DU BOITIER DU MOTEUR | 1 | \$18.11 |
| 25 | 2506900250 | WHEEL GUARD (RIGHT) | PROTECTEUR DE LA MEULE (DROIT) | 1 | \$17.65 |
| 28 | 2506900280 | SPINDLE NUT (RIGHT) | ECROU DE L'ARBRE (DROIT) | 1 | \$3.16 |
| 29 | 2506900290 | WHEEL COVER (RIGHT) | COUVERCLE DE LA MEULE (DROIT) | 1 | \$13.63 |
| 30 | 2506900300 | SPARK BREAKER (RIGHT) | BRISE ETINCELLES (DROIT) | 1 | \$3.85 |
| 31 | 2506900310 | ADJUSTABLE REST (RIGHT) | PORTE-OUTIL (DROIT) | 1 | \$5.58 |
| 32 | 2506900320 | SWITCH (2 PRONG) | INTERRUPTEUR A BASCULE (2 PATTES) | 1 | \$10.06 |
| 33 | 2506900330 | FLANGE HD. SCREW | VIS A TETE BRIDEE | 2 | \$1.55 |
| 34 | 2506900340 | SWITCH PLATE | PLAQUE DE L'INTERRUPTEUR | 1 | \$2.70 |
| 35 | 2506900350 | STRAIN RELIEF | ATTACHE CORDON | 1 | \$2.47 |
| 36 | 2506900360 | BASE (KC-690) | SOCLE (KC-690) | 1 | \$25.01 |
| 36-1 | 2506900361 | BASE (KC-690L) | SOCLE (KC-690L) | 1 | \$26.28 |
| 37 | 2506900370 | SQUARE CAPACITOR | CONDENSATEUR | 1 | \$12.59 |
| 39 | 2506900390 | FLANGE HD. SCREW | VIS A TETE BRIDEE | 1 | \$1.55 |
| 40 | 2506900400 | BOTTOM COVER | PLAQUE DU SOCLE | 1 | \$3.97 |
| 41 | 2506900410 | FLANGE HD. SCREW | VIS A TETE BRIDEE | 4 | \$1.78 |
| 42 | 2506900420 | RUBBER FOOT | PIED EN CAOUTCHOUC | 4 | \$3.16 |
| 43 | 2506900430 | GROUND SCREW | VIS MISE A LA TERRE | 1 | \$1.55 |
| 44 | 2506900440 | WASHER | RONDELLE | 1 | \$1.55 |
| 45 | 2506900450 | POWER CORD | CORDON D'ALIMENTATION | 1 | \$17.19 |
| 46 | 2506900460 | WORK LIGHT (KC-690L) | LUMIERE DE TRAVAIL (KC-690L) | 1 | \$27.31 |
| 47 | 2506900470 | WASHER | RONDELLE | 6 | \$1.55 |
| 48 | 2506900480 | WASHER | RONDELLE | 2 | \$1.61 |
| 50 | 2506900500 | RD. HD. SCREW | VIS A TETE RONDE | 10 | \$1.67 |
| 54 | 2506900540 | FAN | VENTILATEUR | 1 | \$5.35 |
| 55 | 2506900550 | NUT | ECROU | 2 | \$1.55 |
| 56 | 2506900560 | CONNECTOR | MARRETTE | 2 | \$1.32 |
| 58 | 2506900580 | WIRE | FIL | 1 | \$2.59 |

Pricing subject to change without prior notice. / Prix sujet à changement sans préavis.



Parts Pricing List / Liste de Prix des Pièces

KC-690(L)

| Diag. | Order # Com. | English Description | Description Française | Qty./Qté. | Price/Prix |
|-------|--------------|----------------------------|-----------------------------------|-----------|------------|
| 59 | 2506900590 | CONNECTOR | MARRETTE | 2 | \$1.32 |
| 60 | 2506900600 | SPECIAL WASHER | RONDELLE SPECIALE | 1 | \$1.67 |
| 64 | 2506900640 | SPRING WASHER | RONDELLE A RESSORT | 2 | \$1.55 |
| 65 | 2506900650 | TERMINAL BUSHING | BAGUE DE CONNECTION | 1 | \$1.55 |
| 66 | 2506900660 | BUSHING | BAGUE | 1 | \$1.78 |
| 67 | 2506900670 | CLIP TERMINAL | JOINT DE CONNECTION | 2 | \$2.13 |
| 68 | 2506900680 | CLIP TERMINAL BUSHING | BAGUE DE CONNECTION | 2 | \$2.24 |
| 71 | 2506900710 | EYESHIELD & HARDWARE KIT | ENS. DE PARE-ETINCELLES ET QUINC. | 1 | \$21.56 |
| 72 | 2506900720 | EYESHIELD HOLDER | RETENEUR PARE-ETINCELLES | 2 | \$2.24 |
| 73 | 2506900730 | WASHER | RONDELLE | 2 | \$1.55 |
| 74 | 2506900740 | FLANGE HD. SCREW | VIS A TETE BRIDEE | 4 | \$1.55 |
| 75 | 2506900750 | POWER CORD PLATE | PLAQUE/CORDON D'ALIMENTATION | 1 | \$3.28 |
| | 250690MBIL | BILINGUAL MANUAL KC-690(L) | MANUEL BILINGUE KC-690(L) | 1 | \$15.00 |