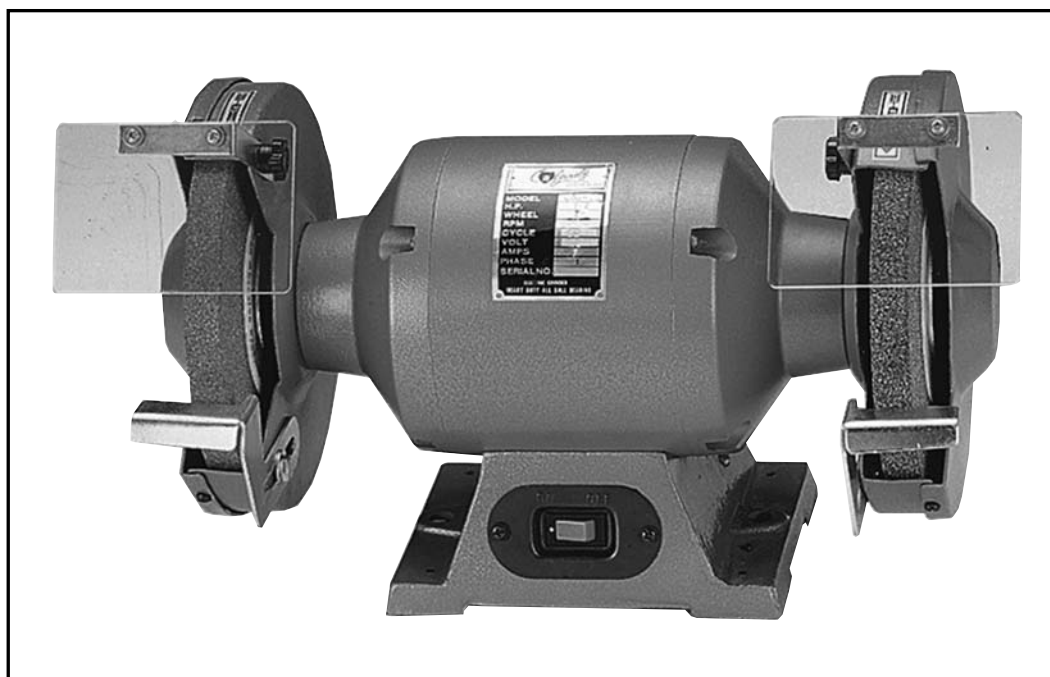




# **BENCH GRINDER**

## **MODEL G1062 & MODEL G1063**

### **INSTRUCTION MANUAL**



COPYRIGHT © 1994 BY GRIZZLY IMPORTS, INC.

**WARNING: NO PORTION OF THIS MANUAL MAY BE REPRODUCED IN ANY SHAPE  
OR FORM WITHOUT THE WRITTEN APPROVAL OF GRIZZLY IMPORTS, INC.**

NOVEMBER 1994. PRINTED IN USA

#### **DISCONTINUED MACHINE MANUAL DISCLAIMER**

THE INFORMATION IN THIS MANUAL REPRESENTS THE LAST CONFIGURATION OF THE MACHINE BEFORE IT WAS DISCONTINUED. MACHINE CONFIGURATIONS MAY HAVE CHANGED AS PRODUCT IMPROVEMENTS WERE INCORPORATED. IF YOU OWN AN EARLIER VERSION OF THE MACHINE, THIS MANUAL MAY NOT EXACTLY DEPICT YOUR MACHINE. CONTACT CUSTOMER SERVICE IF YOU HAVE ANY QUESTIONS ABOUT DIFFERENCES. PREVIOUS VERSIONS ARE NOT AVAILABLE ONLINE.

# WARNING

Some dust created by power sanding, sawing, grinding, drilling, and other construction activities contains chemicals known to the State of California to cause cancer, birth defects or other reproductive harm. Some examples of these chemicals are:

- Lead from lead-based paints.
- Crystalline silica from bricks, cement, and other masonry products.
- Arsenic and chromium from chemically treated lumber.

Your risk from these exposures varies, depending on how often you do this type of work. To reduce your exposure to these chemicals: work in a well ventilated area, and work with approved safety equipment, such as those dust masks that are specially designed to filter out microscopic particles.

# TABLE OF CONTENTS

	PAGE
I. INTRODUCTION .....	1
II. COMMENTARY .....	1
III. SAFETY RULES FOR ALL TOOLS .....	2
IV. UNPACKING .....	4
V. PIECE INVENTORY .....	4
VI. ASSEMBLY .....	4
VII. ELECTRICAL SERVICE REQUIREMENTS .....	5
A. CIRCUIT LOADING .....	5
B. GROUNDING.....	6
C. GENERAL INFORMATION .....	6
D. WORD OF CAUTION .....	6
VIII. OPERATION .....	6
IX. SAFETY RULES FOR GRINDERS.....	6
X. MAINTENANCE .....	7
XI. CLOSURE .....	8
XII. MACHINE DATA .....	8
XIII. WARRANTY AND RETURNS.....	9
XIV. PARTS DIAGRAM.....	10
XV. PARTS LIST .....	10

# I. INTRODUCTION

Grizzly Imports, Inc. is proud to offer the Models G1062 and G1063 Benchtop Grinders. These grinders contribute to Grizzly's growing family of fine metalworking machinery. When used according to the guidelines set forth in this manual, you can expect years of trouble-free, enjoyable operation and experience proof of Grizzly's commitment to customer satisfaction.

The Models G1062 and G1063 are designed for use in a home or small professional shop. The medium and fine grit aluminum oxide wheels will handle multiple grinding and sharpening jobs with ease. The G1063 comes equipped with a  $\frac{3}{4}$  H.P. motor while the G1062 comes with a  $\frac{1}{3}$  H.P. motor. These motors will handle most grinding operations.

We are also pleased to provide this manual with the Models G1062 and G1063 Grinders. This instruction manual was written to guide you through assembly, review safety considerations, and cover general operating procedures. It represents our latest effort to produce the best documentation possible. We want to know what you think. If you have any criticisms that you feel we should pay attention to in our next printing, please write to us at the address below.

Manager, Technical Documentation  
Grizzly Imports, Inc.  
P.O. Box 2069  
Bellingham, WA 98227-2069

Most importantly, we stand behind our machines. We have two excellent regional service departments at your disposal, should the need arise. If, after reviewing this manual carefully, you have any service questions or parts requests, please call or write us at the appropriate location listed below.

If you live West of the  
Mississippi River, contact:  
P.O. Box 2069  
Bellingham, WA 98227  
Phone: 1-360-647-0801  
FAX: 1-800-225-0021

If you live East of the  
Mississippi River, contact:  
2406 Reach Road  
Williamsport, PA 17701  
Phone: 1-717-326-3806  
FAX: 1-800-438-5901

# II. COMMENTARY

To operate this, or any power tool, safely and efficiently, it is essential to become as familiar with its characteristics as possible. Take as much time as necessary to become acquainted with your Bench Grinder. The time you invest before you begin to use the machine will be time well spent. Also, read all of the safety procedures. If you do not understand something, **DO NOT** operate your machine.

The specifications, drawings, and photographs illustrated in this manual represent the Model G1062 and/or G1063 as supplied when the manual was prepared. However, owing to Grizzly's policy of continuous improvement, changes to either model may be made at any time with no obligation on the part of Grizzly. Whenever possible, though, we send manual updates to all owners of a particular tool or machine. Should you receive one, we urge you to insert the new information with the old and keep it for reference.

The information in this manual has been obtained from sources we believe to be reliable and as up-to-date as possible. We have included some important safety measures which we believe to be essential to this machine's operation. While most safety measures are generally universal, Grizzly reminds you that each workshop is different and safety rules should be considered *as they apply to your specific situation*.

We recommend that you keep a copy of our current catalog for complete information regarding Grizzly warranty and return policy. Should you need additional technical information relating to this machine, or if you need general assistance or parts, please contact the appropriate regional service department.

We also believe additional information sources are very important to better realize the full potential of this machine. Trade journals, woodworking magazines, and your local library are good places to start.

Once again, thank you for choosing Grizzly.

### III. SAFETY RULES FOR ALL TOOLS

**WARNING!** As with all power tools, there is a certain amount of inherent danger associated with the Model G1062 and Model G1063 Bench Grinders. Using the tool with respect and caution will considerably lessen the possibility of mechanical damage and operator injury. If normal safety precautions are overlooked or ignored, injury to the operator or others in the area is likely.

These grinders are specifically designed to grind steel and iron. We strongly emphasize that this tool should never be modified and/or used for any application other than that for which it was designed. **Modifications or improper use of this tool will void all warranties.** If you are confused about any aspect of this machine, **DO NOT** use it until you have resolved any questions you might have.

The following are important safety rules for all tools:

1. **KNOW YOUR POWER TOOL.** Read the owner's manual carefully. Learn the tool's applications and limitations, as well as its particular hazards.
2. **KEEP ALL GUARDS IN PLACE** and in working order.
3. **GROUND ALL TOOLS.** It should be plugged into a three-hole grounded outlet. If an adapter is used to accommodate a two-prong receptacle, the adapter plug must be attached to a known ground. Never remove the grounding prong.
4. **REMOVE ADJUSTING KEYS AND WRENCHES.** Make it a habit to check that keys and adjusting wrenches are removed from the machine before turning it on.
5. **KEEP WORK AREA CLEAN.** Cluttered areas and benches invite accidents.
6. **AVOID DANGEROUS ENVIRONMENTS.** Do not use power tools in damp or wet locations or expose them to rain. Keep your work area well lighted.

7. **KEEP CHILDREN AND VISITORS AWAY.** All children and visitors should be kept a safe distance away from your work area.
8. **MAKE WORKSHOP CHILD-PROOF** with padlocks, master switches, or by removing starter keys.
9. **DO NOT FORCE TOOL.** Tools work better and more safely when they are allowed to work at their own speed.
10. **USE THE RIGHT TOOL.** Do not use a tool or an attachment to do a job for which it was not intended.
11. **WEAR PROPER APPAREL.** Do not wear loose clothing, gloves, neckties, or jewelry that might get caught in moving parts. Non-slip footwear is also recommended. Wear a hat or other protective head wear if your hair is long.
12. **USE SAFETY GLASSES AND EAR PROTECTION.** Also use a dust mask if the cutting operation is dusty.
13. **SECURE YOUR WORK.** Use clamps or a fixture to hold your work. It is safer than using your hands and frees up both hands for operating the tool.
14. **DO NOT OVERREACH.** Keep proper footing and balance at all times.
15. **MAINTAIN TOOLS IN TOP CONDITION.** Keep tools sharp and clean for best and safest performance. Follow instructions for lubricating and changing accessories.
16. **DISCONNECT TOOLS FROM POWER** before servicing and when changing accessories, such as blades, bits and cutters.
17. **USE RECOMMENDED ACCESSORIES.** Consult the current catalog for recommended accessories. The use of improper accessories may be hazardous.
18. **AVOID ACCIDENTAL STARTING.** Make sure the switch is in the “OFF” position before plugging in the cord.
19. **NEVER STAND OR LEAN ON TOOL.** Serious injury could occur if the tool is tipped or if the cutting tool is accidentally contacted.
20. **CHECK DAMAGED PARTS.** Before further use of the tool, any part or guard that is damaged should be promptly repaired or replaced. Do not operate the machine until you are certain it is in perfect running condition. Failure to follow this precaution could result in further mechanical damage and operator injury.
21. **DIRECTION OF FEED.** Always feed your work against the direction of blade or cutter travel. Workpieces fed in the same direction as the cutter travel could be forced out of your control.
22. **NEVER LEAVE THE TOOL RUNNING UNATTENDED - TURN POWER OFF.** Do not leave the tool until it comes to a full stop.

23. **DRUGS, ALCOHOL, MEDICATION.** Do not operate the tool under the influence of drugs, alcohol, or any medication. Never operate machinery when overly fatigued.
24. **DO NOT WORK IN HASTE** or operate machine if you are mentally or physically fatigued.
25. **IF THERE IS SOMETHING YOU DO NOT KNOW OR UNDERSTAND, DO NOT OPERATE MACHINE!** Ask for help first. Confusion can be dangerous.
26. **BAD HABITS ARE DANGEROUS.** Review all safety procedures often.

## IV. UNPACKING

The Model G1062 and Model G1063 are each shipped from the factory in a carefully packed carton. If you find the machine to be damaged after you've signed for delivery and the truck and driver are already gone, you will need to file a freight claim with the carrier. Save the containers and all packing materials for inspection by the carrier or their agent. Without the packing materials, filing a freight claim can be difficult. If you need advice regarding this situation, please call us.

**Caution:** These grinders are relatively heavy in their packaging (approx. 25 lbs. for the G1062 and 35 lbs. for the G1063). **DO NOT** over-exert yourself while unpacking or moving your machine.

When you are completely satisfied with the condition of your shipment, you should inventory its parts.

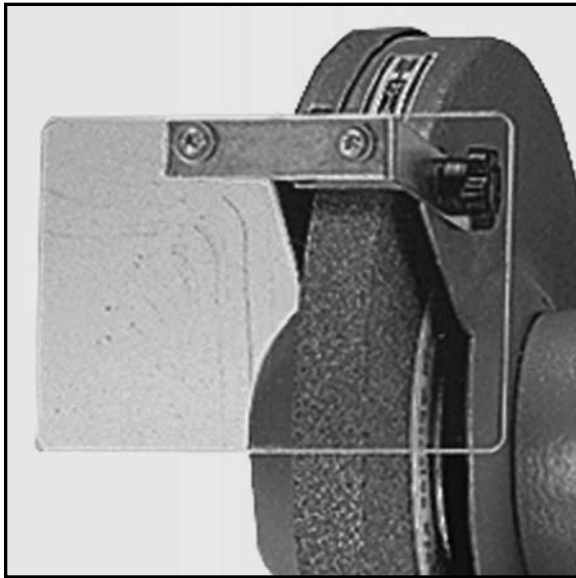
## V. PIECE INVENTORY

- Bench Grinder
- Tool Rests (1 left and 1 right)
- Eyeshields and mounts (1 left and 1 right)
- Fasteners

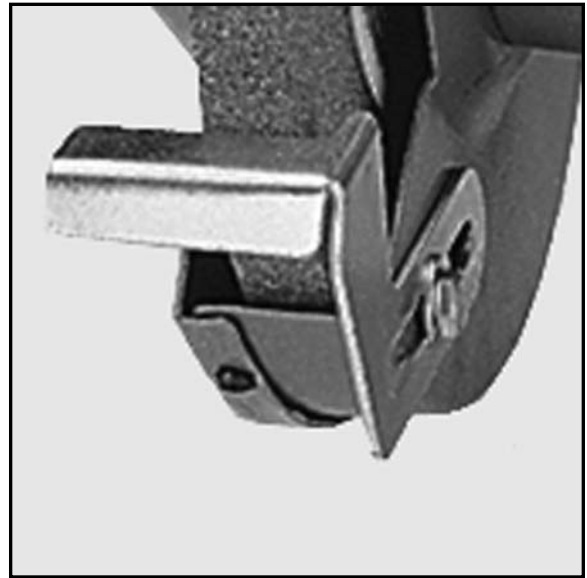
## VI. ASSEMBLY

To attach the tool rest and eyeshield assemblies:

1. Fasten the tool rest bracket to one of the three threaded holes on the lower inside portion of the wheel housing. One of the holes is smaller than the others. We recommend using one of the larger holes to begin with. The variability of the hole size and hole location is provided to give you added range and flexibility.
2. Adjust the bracket so the tool rest sits flat with enough clearance between it and the wheel to allow free rotation.



**Figure 1**



**Figure 2**

3. Tighten the fasteners until the tool rest is secure. **Figure 1.**
4. Attach the eyeshield assembly to the threaded hole in the upper inside portion of the wheel housing with one of the two smaller hex bolts or knobs provided.
5. Attach the eyeshields with the small screws, nuts, and washers provided. Adjust the eyeshield to suit your needs by loosening the hex bolt or knob and moving to the desired position. Retighten fastener. **Figure 2.**

Repeat steps 1-5 for the opposite side.

**NOTE:** The tool rest and eyeshield are designed to minimize the possibility of injury or equipment damage. **DO NOT** operate this grinder without installing these pieces. **ALWAYS WEAR PROPER SAFETY DEVICES WHEN OPERATING THIS, OR ANY, MACHINERY.** Grizzly Imports carries a wide assortment of fine protective equipment. See the latest Grizzly catalog for prices and ordering information.

## **VII. ELECTRICAL SERVICE REQUIREMENTS**

### **A. CIRCUIT LOADING**

Your Model G1062 and G1063 Bench Grinders are wired for 110/120V, single phase operation; neither can be operated at 220/240V. The  $\frac{1}{3}$  H.P. motor on the G1062 will draw 4 amps at 110/120V. The  $\frac{3}{4}$  H.P. motor on the G1063 will draw 8 amps at 110/120V. These are not large loads. However, if you operate your grinder on a circuit that is close to capacity, it might blow a fuse or trip a circuit breaker. If an unusual load does not exist and power failure still occurs, have the circuit inspected by a qualified electrician.

## B. GROUNDING

**This equipment must be grounded.** This grinder is equipped with a power cord and plug with a ground wire. Please ensure that the outlet and circuit you select is wired for 110/120V and is properly grounded. If it is not, it will be necessary to run a separate 12 AWG copper wire from the outlet to a known ground. If adding a new circuit, please ensure that the circuit is connected to the grounding terminal in your electric service panel. Under no circumstances should the grounding pin be removed from any three pronged plug.

## C. GENERAL INFORMATION

**Fusing:** Fuse at 15 amps for 110/120V service. Fuses rated any higher will not adequately protect this motor.

**Extension Cords:** If used, extension cords must be rated Hard Service (Grade S) or better. Conductor size must be 14 AWG for cords up to 50 feet long. Your extension cord must also contain a ground wire and plug pin. Always repair or replace extension cords if they become damaged.

## D. WORD OF CAUTION

In this section we have covered some basic electrical requirements for the safe operation of either the G1062 or G1063 Bench Grinders. As with the safety rules in the preceding section, these requirements are not necessarily comprehensive. Further, you must be sure that your particular electrical configuration complies with state and local codes. The best way to ensure compliance is to check with your local municipality or a licensed electrician.

## VIII. OPERATION

Your G1062 or G1063 Bench Grinder is an excellent tool for grinding rough edges on a variety of steel and cast-iron surfaces. It should not be used for aluminum or wood because the wheels will clog too rapidly.

Both the G1062 and the G1063 turn at a rate of 3,450 RPM. The wheels are capable of generating enough heat to ruin the temper of metal and make it lose its hardness. When grinding the working edges of tools, use a very short, light stroke. Do not leave the surface in contact with the wheel long enough to allow heat to build up. Frequently dip the tool in water to cool it.

## IX. GRINDER SAFETY RULES

We have already covered a number of common-sense safety rules earlier in the instruction manual. Here are some more safety rules to consider before you operate your grinder:

1. **NEVER OPERATE THE GRINDER WITH BROKEN WHEELS.** The grinding wheels operate at 3,450 RPM. A broken wheel could turn into a missile.

2. **NEVER STICK AN OBJECT AGAINST A WHEEL TO STOP THE GRINDER.** Let it slow on its own.
3. **ALWAYS USE THE TOOL REST AND SAFETY GUARDS.** Supports and guards are essential for safe grinder operation.
4. **USE ONLY PROPERLY SIZED WHEELS.** The wrong sized wheel can dangerously increase or decrease operating speed at the grinding surface. A wheel that is too large could come in contact with the wheel housing, potentially damaging the machine.
5. **ALWAYS WEAR EYE PROTECTION.** The grinder can throw off sparks and tiny metal shards. Use eye protection to avoid operator injury.
6. **ADJUST TOOL REST PROPERLY.** The grinder has the potential for binding against a workpiece introduced at an improper angle – and send it flying. Avoid grinding your workpiece at angles greater than 90° to the direction of wheel travel.
7. **ALLOW GRINDER TO REACH FULL SPEED.** Let the grinding wheel reach its full operating speed before using the grinder.
8. **SECURE GRINDER.** Attach the grinder firmly to your benchtop. Secure attachment will ensure your grinder will not move when operated.
9. **AVOID OVERHEATING WORKPIECE.** Excessive or prolonged grinding on a workpiece can heat it to the point where it becomes dangerous to the operator. Excessive grinding can also soften your workpiece and ruin its edge.
10. **NEVER GRIND SMALL STOCK.** Do not attempt to grind or sharpen anything that cannot be adequately supported by the tool rest. Use clamping pliers or a similar holder when grinding parts which cannot be held easily by hand.
11. **KEEP A CLEAN WORK AREA.** The chances of an accident are far less if the area around your grinder is kept free of clutter.
12. **AVOID LOOSE FITTING CLOTHING AND TIE BACK LONG HAIR.** A grinder's spindle, spinning at 3,450 RPM, can suck a tremendous amount of material in a very short time – given the chance. *Don't give it the chance.*

## **X. MAINTENANCE**

Your grinder requires very little maintenance. The bearings are lubricated and sealed at the factory and require no maintenance during their lifetimes. The grinding wheels will eventually be worn to the point where replacement is necessary. Grizzly carries a wide assortment of wheel types and grits designed for this machine. See the latest Grizzly catalog for pricing and ordering information. **CAUTION: IF YOU DROP A WHEEL, DO NOT EVER USE IT. THE TINY FRACTURES CREATED BY THE IMPACT COULD CAUSE THE WHEEL TO EXPLODE AND INJURE YOU SEVERELY.**

To remove and replace a wheel:

1. Remove the eyeshield and the outside wheel housing cover.

2. Turn the shaft nut counterclockwise on the right, or clockwise on the left, while holding the wheel.
- 3 Remove the nut, washer, and the wheel.
4. To install a new wheel, reverse the above procedures.

## XI. CLOSURE

The following pages contain machine specifications, warranty and return information, a parts diagram, and a parts list.

Please write or call the appropriate regional service department if you need service assistance. Our service staff will be glad to help you. If you wish to comment on this manual, please write to our Bellingham, Washington location.

Thank you again for your purchase. We sincerely appreciate your business and hope we have the opportunity to serve you again soon.

## XII. MACHINE DATA

### GRIZZLY MODEL G1062 AND G1063 BENCH GRINDERS

**Model:** .....G1062 .....G1063

**Motor:**

Type .....	TEFC .....	TEFC
Horsepower .....	$\frac{1}{3}$ H.P. ....	$\frac{3}{4}$ H.P.
Voltage .....	110/120V .....	110/120V
Amps .....	4 .....	8
RPMs .....	3450 .....	3450
Phase/Cycle .....	Single/60 HZ .....	Single/60 HZ
Bearings .....	Shielded .....	Shielded

**Wheels:**

Coarse Grit Aluminum Oxide .....	6" x $\frac{3}{4}$ ", $\frac{1}{2}$ " hole .....	8" x 1", $\frac{5}{8}$ " hole
Medium Grit Aluminum Oxide .....	6" x $\frac{3}{4}$ ", $\frac{1}{2}$ " hole .....	8" x 1", $\frac{5}{8}$ " hole

**Features:**

Includes tool rests and eyeshields.

*Specifications, while deemed accurate, are not guaranteed.*

## **XIII. WARRANTY AND RETURNS**

### **LIMITED WARRANTY**

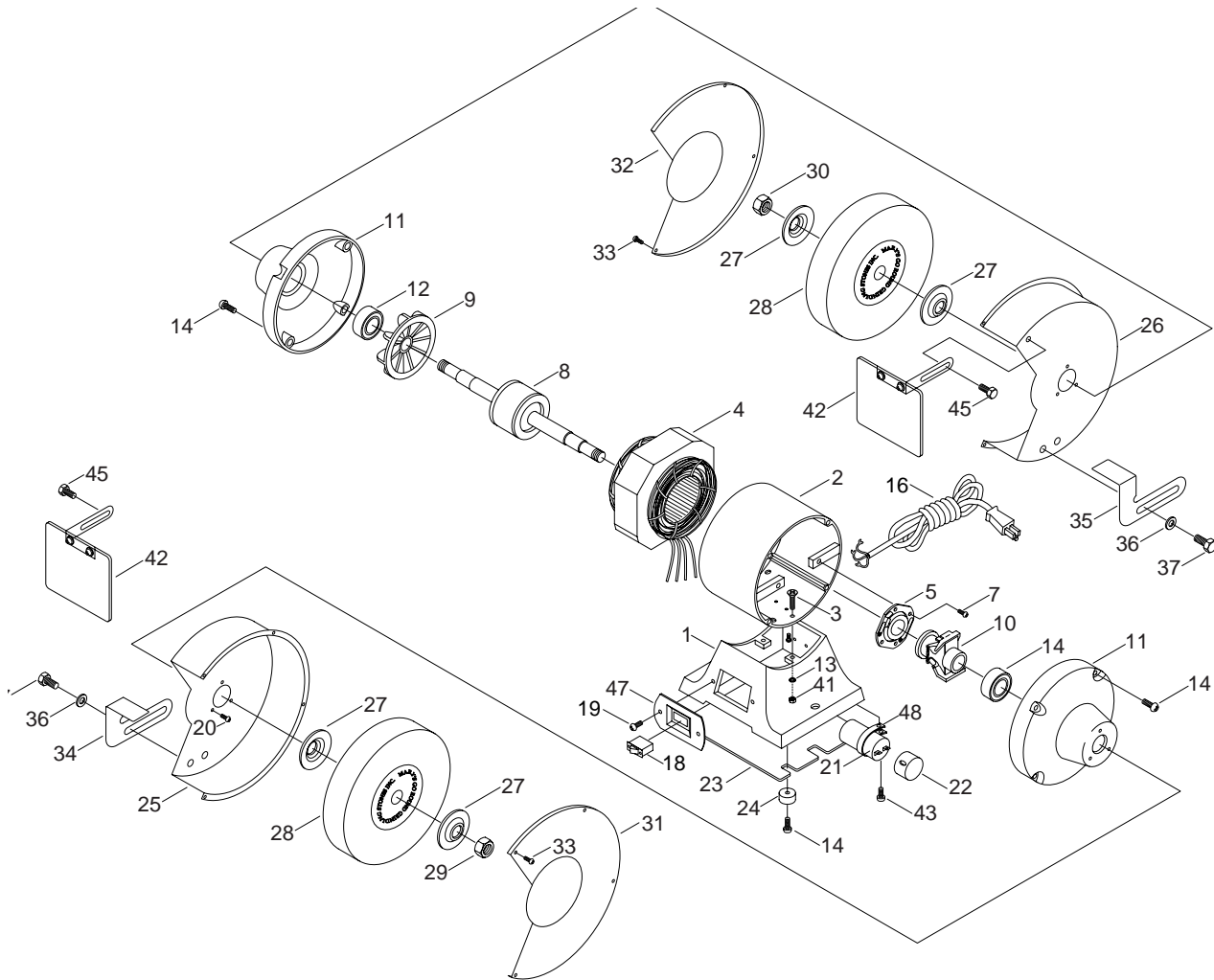
Grizzly Imports, Inc. warrants every product it sells for a period of **1 year** to the original purchaser from the date of purchase. This warranty does not apply to defects due directly or indirectly to misuse, abuse, negligence, accidents, repairs or alterations or lack of maintenance. This is Grizzly's sole written warranty and any and all warranties that may be implied by law, including any merchantability or fitness, for any particular purpose, are hereby limited to the duration of this written warranty. We do not warrant or represent that the merchandise complies with the provisions of any law or acts unless the manufacturer so warrants. In no event shall Grizzly's liability under this warranty exceed the purchase price paid for the product and any legal actions brought against Grizzly shall be tried in the State of Washington, County of Whatcom.

We shall in no event be liable for death, injuries to persons or property or for incidental, contingent, special, or consequential damages arising from the use of our products.

To take advantage of this warranty, contact us by mail or phone and give us all the details. We will then issue you a "Return Number" which must be clearly posted on the outside as well as the inside of the carton. We will not accept any item back without this number. Proof of purchase must accompany the merchandise. The manufacturers reserve the right to change specifications at any time because they constantly strive to achieve better quality equipment.

We make every effort to ensure that our products meet high quality and durability standards and we hope you never need to use this warranty.

## XIV. PARTS DIAGRAM



## XV. PARTS LIST

REF	DESCRIPTION	REF	DESCRIPTION	REF	DESCRIPTION
1	BASE	18	SWITCH	32	LEFT GUARD
2	CASE	19	PHLP HEAD SCREW	33	PHLP HD SCREW
3	FLAT HEAD SCREW	20	PHLP HEAD SCREW	34	RIGHT TOOL REST
4	STATOR	21	CAPACITOR	35	LEFT TOOL REST
5	CONTACT PLATE	22	CAP	36	WASHER
7	PHLP HEAD SCREW	23	BOTTOM COVER	37	HEX BOLT
8	ROTOR	24	FOOT	41	HEX NUT
9	FAN	25	RIGHT GUARD	42	COMPLETE EYE SHIELD
10	CENTRIFUGAL SWITCH	26	LEFT GUARD	43	SCREW
11	END BELL	27	FLANGE	46	HEX BOLT
12	BEARING	28	GRINDING WHEEL	47	SWITCH MOUNT
13	LOCK WASHER	29	NUT LH	48	CLAMP
14	PHLP HEAD SCREW	30	NUT RH		
16	POWER CORD	31	RIGHT COVER		