
Nokia C2-03/C2-06 User Guide

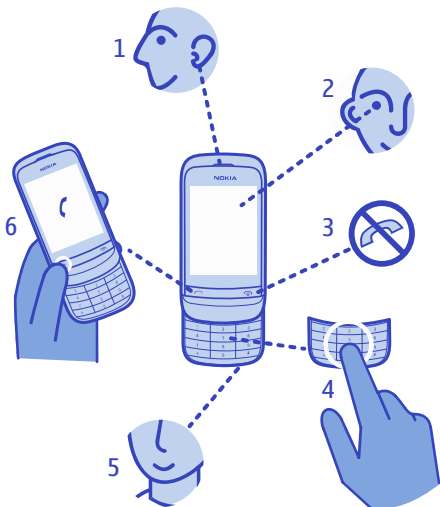
Contents

Keys and parts.....	5
Insert a SIM card and battery.....	7
Insert or remove a second SIM card.....	8
Insert a memory card.....	9
Charge the battery.....	10
Lock or unlock the keys and screen	11
Explore your phone.....	11
Swipe to open applications.....	13
Copy content from your old phone.....	14
Set which SIM card to use.....	15
Indicators.....	16
Make or answer a call.....	18
Call the last dialled number.....	19
View your missed calls.....	19
Change the volume.....	20
Save a name and phone number.....	20
Make calls quickly.....	22
Send a message.....	23

Write text.....	24
Check your voicemail.....	25
Personalise your home screen.....	26
Add shortcuts to your home screen.....	27
Change your ringtone.....	28
Set a song as your ringtone.....	29
Set an alarm.....	30
Add an appointment.....	31
Listen to the radio.....	31
Find and save radio stations.....	32
Play a song.....	34
Take a photo.....	35
Record a video.....	36
Browse the web.....	37
Add a bookmark.....	38
Get social with Communities.....	38
Set up your mail account.....	39
Send a mail.....	40

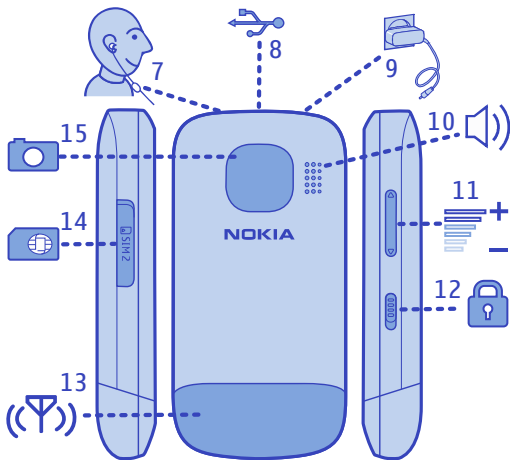
Chat with your friends.....	42
About Maps.....	43
See where you are on the map.....	45
Find a place.....	45
Share your location or a place.....	46
Create a walking route.....	47
Send a photo using Bluetooth.....	48
Copy between your phone and PC.....	49
Restore original settings.....	50
Update phone software using your PC.....	51
Update phone software using your phone.....	51
Back up content to a memory card.....	52
Access codes.....	53
Support.....	55
Protect the environment.....	55
Save energy.....	55
Recycle.....	55
General information.....	57

Keys and parts



- 1 Earpiece
- 2 Screen
- 3 End/Power key

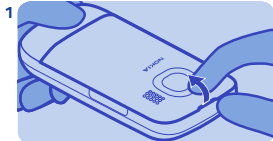
- 4 Keypad
- 5 Microphone
- 6 Call key



- 7 Headset connector (3.5 mm)
- 8 Micro-USB connector
- 9 Charger connector
- 10 Loudspeaker
- 11 Volume keys
- 12 Key lock switch

- 13 Antenna area. See ➞ 7 in "Feature-specific instructions".
- 14 SIM card slot (SIM 2). See ➞ 3.
- 15 Camera lens. Before using the camera, remove the protective tape from the lens.

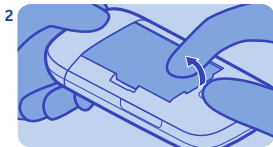
Insert a SIM card and battery



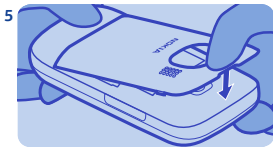
Switch the phone off, then remove the back cover.



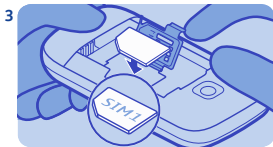
Line up the battery contacts, then push the battery in.




If the battery is in the phone, lift it out.




Press the back cover down until it locks into place.

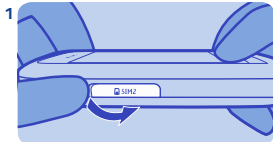


Open the holder, then put the SIM in with the contact area face down. See  2.

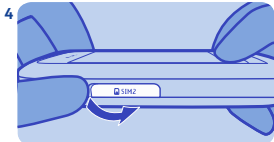


To switch on, press and hold  until the phone vibrates.

Insert or remove a second SIM card



Open the external SIM slot, marked with **SIM2**. See ➡ 4.



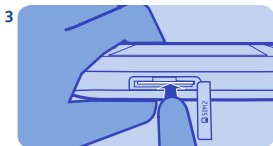
To remove the card, open the SIM slot.



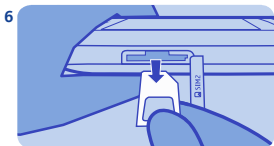
Put the SIM in with the contact area face up.



Push the SIM in until it's free.

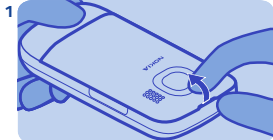


Push the card in until it locks into place. Close the cover.



Pull the SIM out.

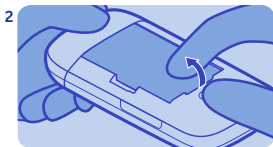
Insert a memory card



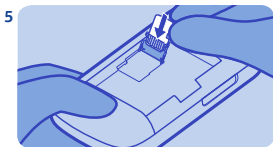
Switch the phone off. Lift and remove the back cover.



Lift the holder.



If the battery is in the phone, lift it out.



Put a compatible memory card in with the contact area face down.



Slide the memory card holder towards the top of the phone.

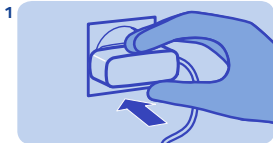


Lower the holder.

Charge the battery



Slide the holder to its original position.



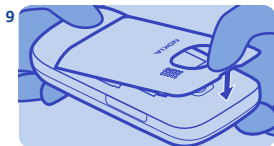
Plug the charger into a wall outlet.



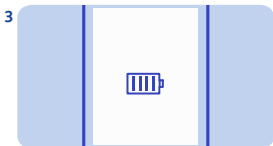
Line up the battery contacts, then push the battery in.



Connect the charger to the phone.
See ➡ 5, 6.



Press the back cover down until it locks into place. See ➡ 1.



Battery full? Unplug from the phone, then from the wall outlet.

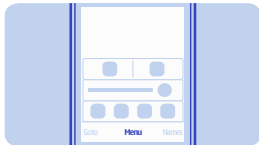
Lock or unlock the keys and screen



Lock the keys and screen when not using your phone.

Explore your phone

1



To see the features and apps in your phone, press **Menu**.

1



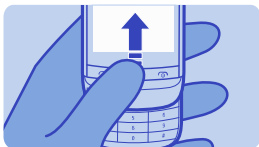
To lock or unlock, slide the key lock switch.

2



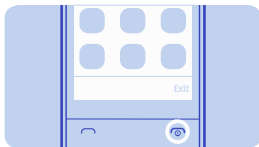
To go back to the previous view, press **Back**.


2

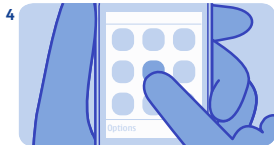


You can also close or open the slide.

3




To go back to the home screen, press .



4 Tap an app or other item to open it.



7 To scroll, slide your finger quickly up or down, then lift your finger. See  8.

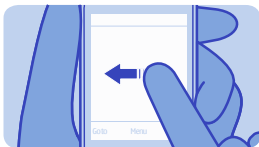


5 Tap and hold an item to see more options.

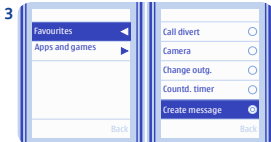


6 To swipe, steadily slide your finger to the desired direction.

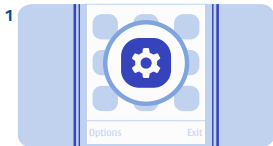
Swipe to open applications



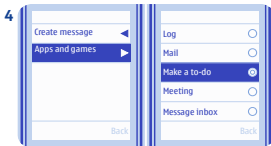
Open your favourite app with a single swipe on the home screen.



Select which app to open when you swipe left.



Select **Menu** > **Settings**.



Select which app to open when you swipe right.

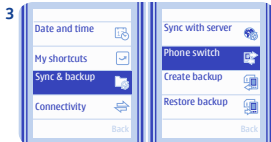


Select **My shortcuts** > **Swipe gesture**.

Copy content from your old phone



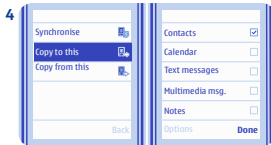
Easily get your contacts, calendar, and other stuff to your new phone.



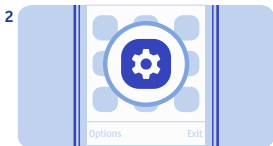
Select **Sync & backup** > **Phone switch**.



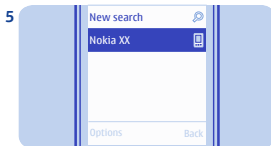
Switch Bluetooth on in both phones.



Select **Copy to this** and what you want to copy, then select **Done**.



Select **Menu** > **Settings**.



Select your old phone from the list of found devices.

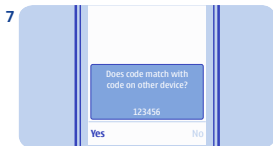
Set which SIM card to use



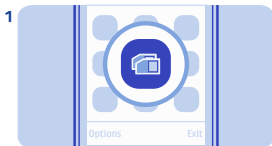
If asked, create a one-time passcode (such as 123), then select **OK**.



Set which SIM to use for calls or the internet connection.



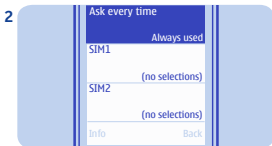
Check that the codes match on both phones.



Select **Menu > SIM mgr..**

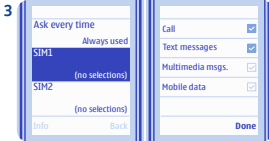


Follow the instructions shown on both phones.





To decide every time which SIM to use, select **Ask every time**.


Indicators



Select **SIM1** or **SIM2** to set which SIM to use for which connection.


 — You have unread messages sent to SIM1 or SIM2.

 — You have unread messages sent to SIM1 and SIM2.


 — You have unsent, cancelled, or failed messages from SIM1 or SIM2.

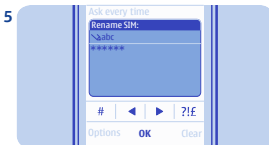


To rename a SIM, select and hold the card, then select **Rename**.

 — You have unsent, cancelled, or failed messages from SIM1 and SIM2.

 — The touch screen and keys are locked.

 — The phone doesn't ring when somebody calls or sends a message.



Write a name, then select **OK**.


 — An alarm is set.


 — The phone is connected to a GPRS or EGPRS network using SIM1.


 — A GPRS or EGPRS connection from SIM1 is open.

 — The GPRS or EGPRS connection from SIM1 is on hold.


 — Bluetooth is on.

 — All incoming calls to SIM1 or SIM2 are forwarded to another number.

 — All incoming calls to SIM1 and SIM2 are forwarded to another number.

 — The profile in use is timed. After a set amount of time, the phone changes back to the previously used profile.

 — A headset is connected to the phone.

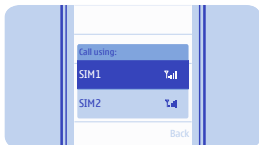
 — The phone is connected to a device, such as a PC, with a USB cable.

Make or answer a call



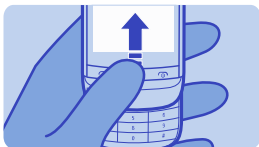
Call your friend. See ➡ 9.

3



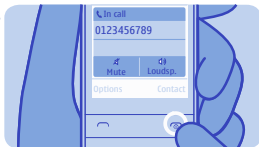
If asked, select which SIM to use.

1



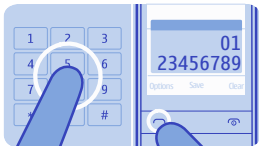
Open the slide.


4



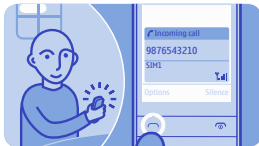
To end the call, press , or close the slide.

2



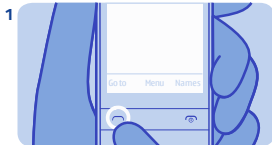
Type in the phone number, then press .

5

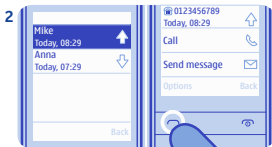


When your phone rings, press , or open the slide. See ➡ 10.

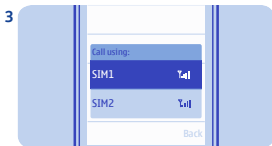
Call the last dialled number



On the home screen, press .

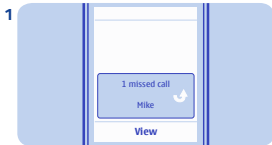


Select the number, then press .

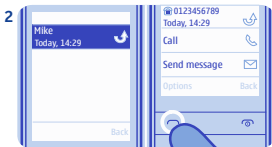



Select the SIM to use.

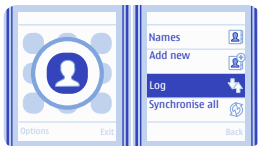
View your missed calls



On the home screen, select **View**. See  11.



To call back, select the number, then press .



Tip: To view missed calls later, select **Menu > Contacts > Log > Missed calls**.

Change the volume

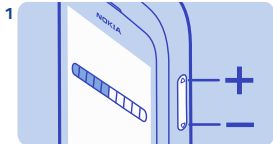
Save a name and phone number



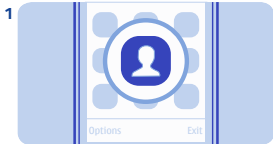
Is the volume too loud during a call or when listening to the radio?



Add new contacts to your phone.



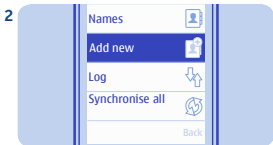
Use the volume keys.



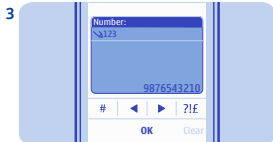
Select **Menu** > **Contacts**.



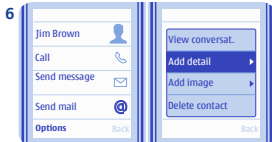
Better.



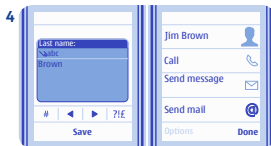
Select **Add new**. If asked, select where to save the contact.



Type in the phone number, then select **OK**.



Select **Options** > **Add detail**.

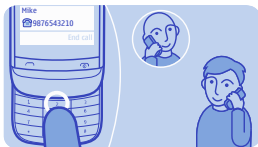


Write the first and last name, then select **Save** > **Done**.

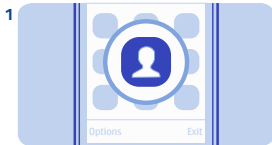


To edit details, select **Names** and a contact.

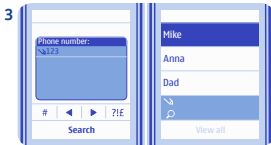
Make calls quickly



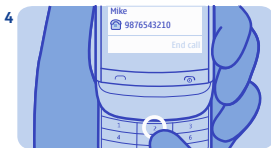
Call someone often? Set their number as a speed dial. See ➞ 12.



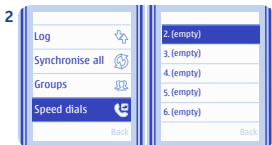
Select **Menu** > **Contacts**.



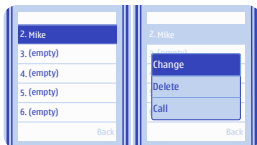
Select **Search** and a contact.



To call, press and hold a number key on the home screen.



Select **Speed dials** and a free slot.



Tip: To change or delete a speed dial, select and hold the slot.

Send a message



Keep in touch with people through messages. See ➡ 14.

3



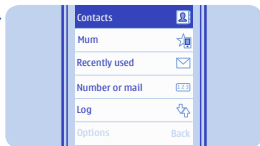
Write your message and select **Continue**.

1



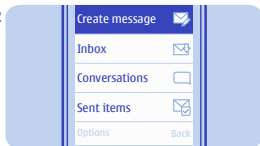
Select **Menu** > **Messaging**.

4



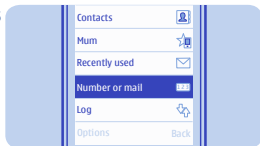
To add a recipient, select **Contacts**.

2



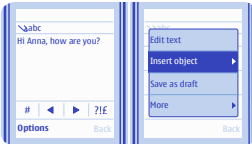
Select **Create message**.

5



To type in a number or mail address, select **Number or mail**.

Write text



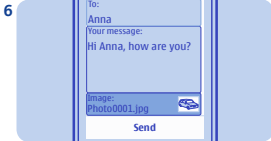
Press a key repeatedly until the letter is shown.

To type in a punctuation mark, press **1** repeatedly.

To type in a special character, press *****, then select the character.

Tip: To add an attachment, select **Options > Insert object**. See ➡ 15, 16, 17.

To switch between character cases, press **#**.



To use number mode, press and hold **#**, then select **Number mode**. To go back to letter mode, press and hold **#**.

If you want to quickly type in a single number, just press and hold the number key.

Select **Send**. If asked, select which SIM to use.

To switch predictive text on or off, select **Options > Prediction > Prediction on** or **Prediction off**. Not all languages are supported.

To change the writing language, select **Options > Writing language**.

Check your voicemail



When you can't answer, you can forward calls to your voicemail.

3

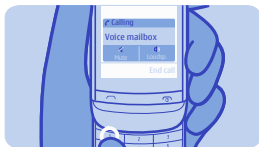


When setting up voicemail, type in your voice mailbox number.

1

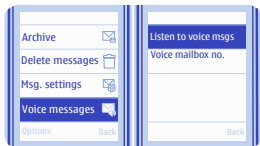


Select **Menu** > **Messaging**.



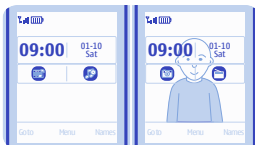
Tip: To quickly call your voicemail, press and hold **1** on the home screen.

2

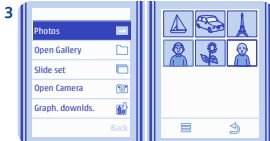


Select **Voice messages** > **Listen to voice msgs**.

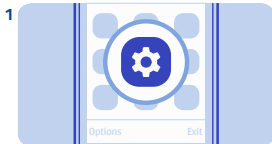
Personalise your home screen



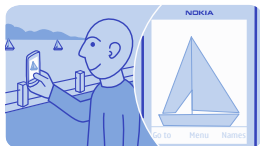
You can change the wallpaper, and rearrange items on the home screen.



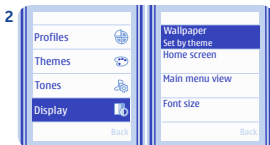
Select a folder and a photo.



Select **Menu** > **Settings**.

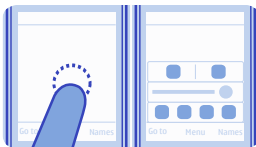


Tip: You can also take a photo on your phone camera, and use that.



Select **Display** > **Wallpaper**.

Add shortcuts to your home screen



Add shortcuts to your favourite apps to your home screen.

3



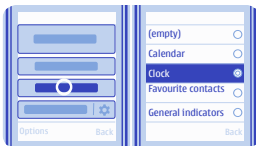
Select **Done**.

1



Tap and hold the home screen, then select **Personalise view**.

2

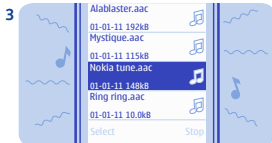


Select a bar, then select an item, such as a widget.

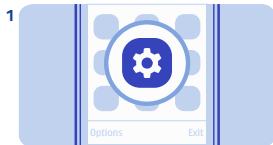
Change your ringtone



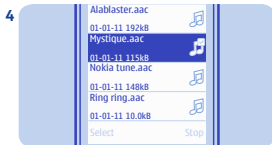
Set a different ringtone for each profile.



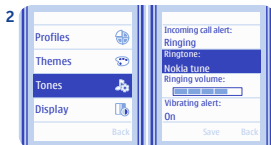
Browse to a ringtone.



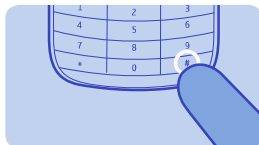
Select **Menu** > **Settings**.



Select the ringtone.



Select **Tones** > **Ringtone:**.

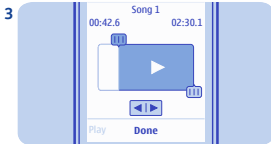


Tip: To switch between the silent and normal profile, press and hold #.

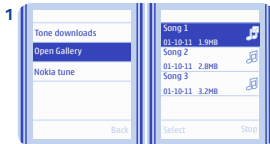
Set a song as your ringtone



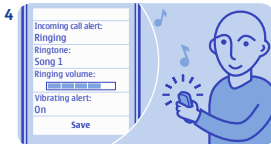
You can set a song from the music player as your ringtone.



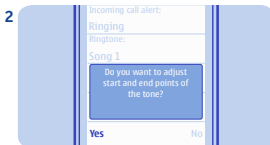
Drag  and  to the start and end points, then select **Done**.



When setting a ringtone, select **Open Gallery**, then browse to the song.



Select **Save**.

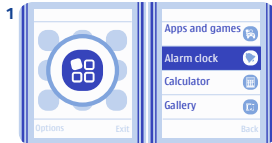


You can mark a section of a song to use as a ringtone. Select **Yes**.

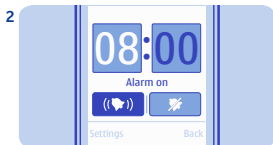
Set an alarm



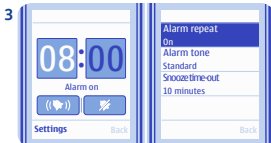
Use your phone as an alarm clock.



Select **Menu** > **Apps** > **Alarm clock**.



Set the alarm time, then select ((♥)).

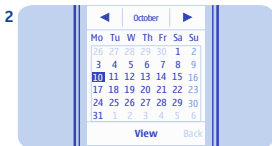


To repeat the alarm, select **Settings** > **Alarm repeat** > **On** and the days.

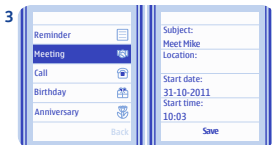
Add an appointment



Select **Menu** > **Calendar**.



Select a date and **View** > **Add**.



Select **Meeting**, fill in the fields, then select **Save**.

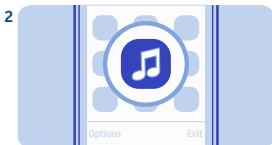
Listen to the radio



Listen to your favourite radio stations on your phone.

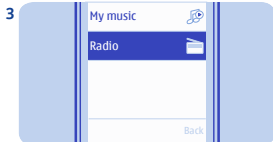


Connect a compatible headset. It acts as an antenna.

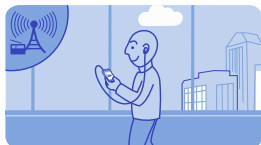


Select **Menu** > **Music**.

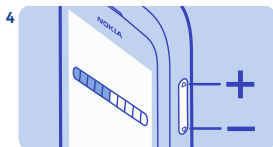
Find and save radio stations



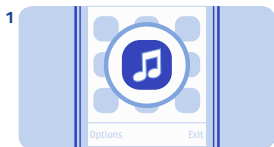
Select **Radio**.



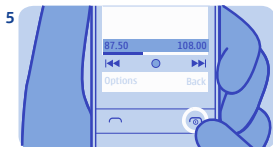
Search for your favourite radio stations



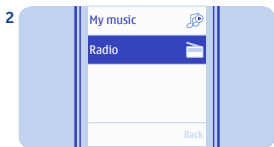
To change the volume, use the volume keys.



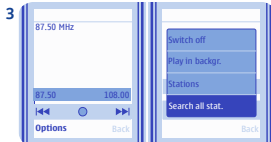
Select **Menu > Music**.



To close the radio, press .



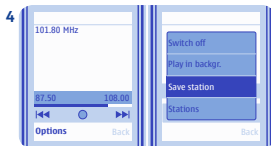
Select **Radio**.



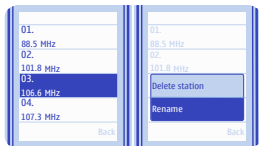
To search for all available stations, select **Options** > **Search all stat..**



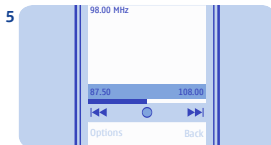
Tip: To switch to a saved station, you can also press a number key.



To save a station, select **Options** > **Save station.**

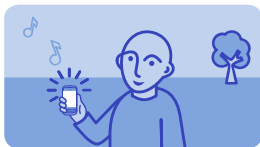


Tip: To rename a station, select and hold it, then select **Rename.**

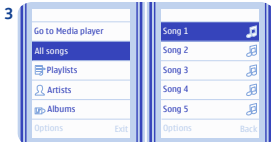


To switch to a saved station, select **Switch to saved station** or **Switch to saved station**.

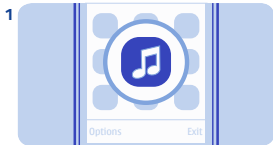
Play a song



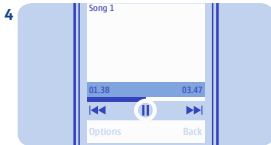
Listen to your favourite music on your phone.



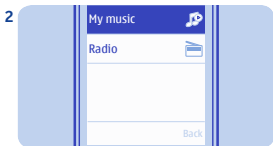
Select the song you want to play.



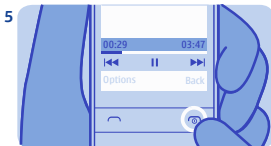
Select **Menu** > **Music**.



To pause or resume playing, select **II** or **▶**.



Select **My music**.



To close the music player, press **◀**.

Take a photo



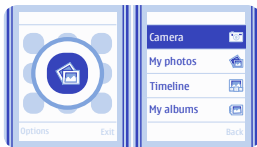
There's a camera in your phone — just aim and snap!

3



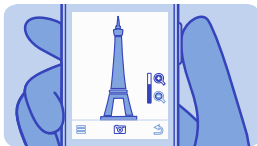
Select .
The photos are saved in My photos.

1



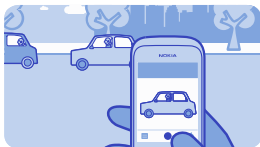
To open the camera, select **Menu > Photos > Camera**.

2

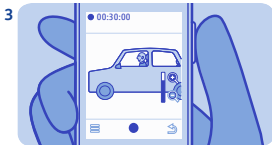


Use the volume keys to zoom in or out.

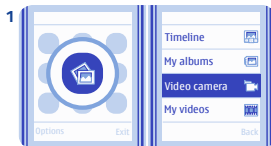
Record a video



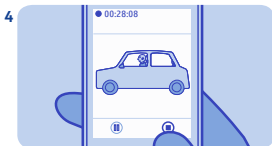
Besides taking photos, you can also record videos with your phone.



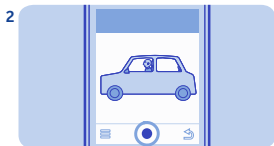
Use the volume keys to zoom in or out.



To open the camera, select **Menu** > **Photos** > **Video camera**.



To stop recording, select . Videos are saved in My videos.



To start recording, select .

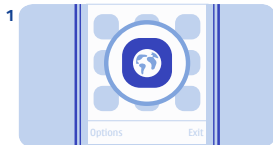
Browse the web



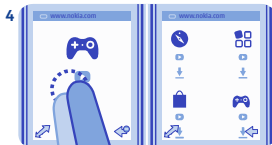
Catch up on the news, and visit your favourite websites.



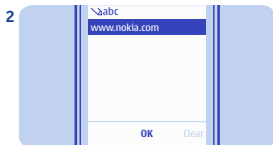
To zoom in, tap the section of the web page you want to see better.



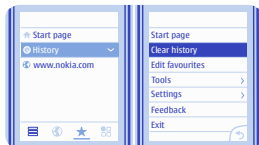
Select **Menu** > **Internet**.



To zoom out, double-tap the screen.



To go to a website, write the web address in the address bar.



Tip: In the Favourites view, you can select **≡** > **Clear history**.

Add a bookmark

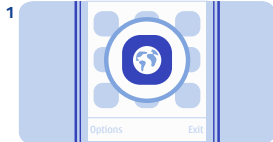


If you visit the same websites often, add them as bookmarks.

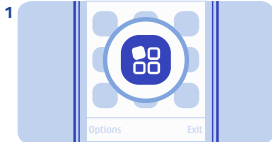
Get social with Communities



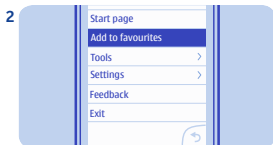
Communities is your gateway to social networking services.



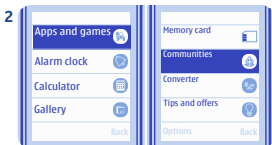
Select **Menu** > **Internet**.




Select **Menu** > **Apps**.

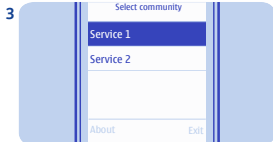


While browsing, select  > **Add to favourites**.



Select **Apps and games** > **Communities** and the SIM. See  19.

Set up your mail account



Select a service, then sign in. See 18, 20.



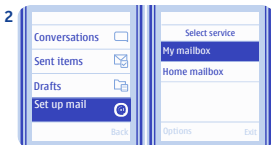
Want to mail, but have no computer at hand? Set up mail in your phone.



Tip: Add Communities to your home screen to see the latest updates.

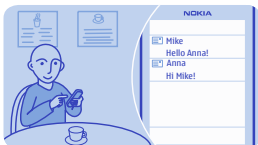


Select **Menu** > **Messaging**.

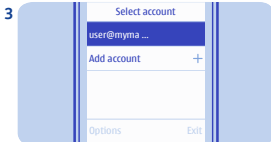


Select **Set up mail** and a mail service, then follow the instructions.

Send a mail



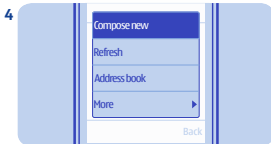
You can read and send mail while on the move.



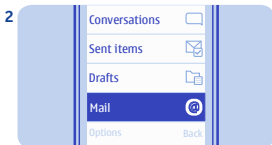
Select a mail account.



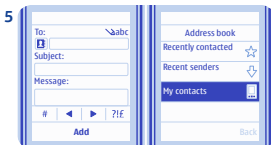
Select **Menu** > **Messaging**.



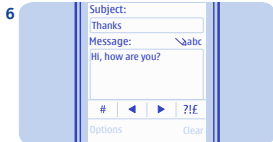
In the mailbox, select **Options** > **Compose new**.



Select **Mail**. If asked, select which SIM to use.



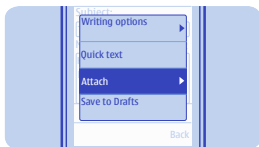
To add a recipient, select **Add**, or manually write the address.



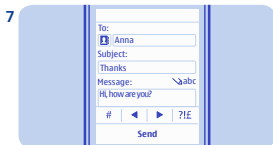
Write the subject and your message.



Tip: To reply to a mail, open the mail, then select **Reply**.



Tip: To attach a file, select **Options** > **Attach**.



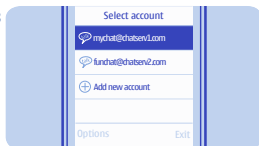
Select **Send**.

Chat with your friends



You can chat with your friends online while on the move.

3

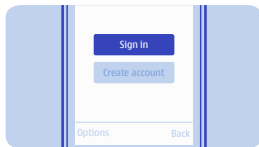


Select a service, then sign in.

1

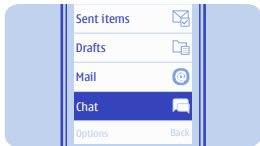


Select **Menu** > **Messaging**.



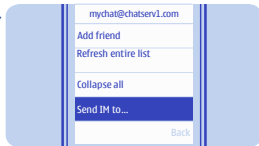
Tip: If you don't have a chat account, you can sign in to Ovi Chat.

2



Select **Chat**. If asked, select which SIM to use.

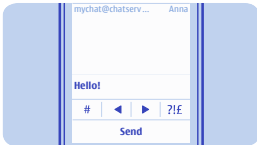
4



Select **Send IM to...** and a contact.

About Maps

5



Write your message in the text box, then select **Send**. See ➡ 13.



Your phone comes with the Maps app, and may have a memory card with preloaded maps for your country. Make sure the memory card is in your phone before using Maps.

6



When you want to continue a conversation, select the thread.


You can only use Maps when using the SIM card in the internal SIM card holder.

Select **Menu > Maps**.

You can browse maps of different cities in your country. You can also:

- View your current location
- Plan a route to a nearby place
- Search for a place or specific address, and save it
- Send your location or a place to a friend in a text message

When you browse to an area which is not covered by the maps already downloaded on the memory card, a

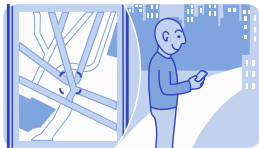
map for the area is automatically downloaded through the internet. See  13.

Network access may be required to find your current location. You may be prompted to select an internet access point.

Some services may not be available in all countries, and may be provided only in selected languages.

Contents of digital maps may sometimes be inaccurate and incomplete. Never rely solely on the content or the service for essential communications, such as in emergencies.

See where you are on the map

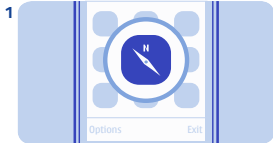


To help get your bearings, check where you are on the map.

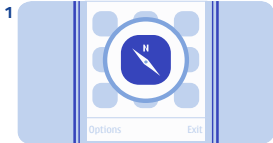
Find a place



Find locations and addresses.



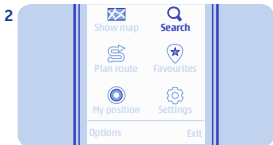
Select **Menu** > **Maps**.



Select **Menu** > **Maps**.



Select **My position**.



Select **Search**.

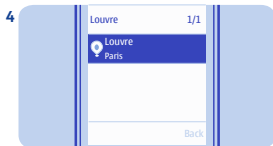
Share your location or a place



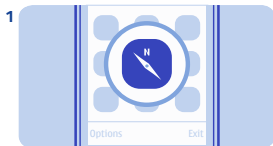
Write the name or address of the place, then select **Go**.



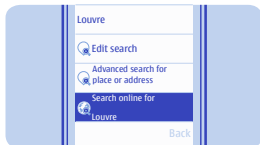
You can send a link to a place to your friend in a text message.



Select from the matching places or addresses.



Select **Menu > Maps**.

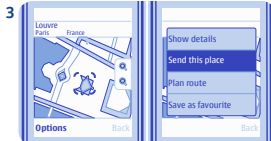


Tip: Can't find the place? To search online, select **Search online for**.



Select **My position** or a place on the map.

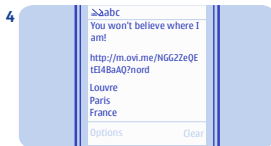
Create a walking route



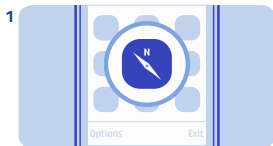
Select **Options** > **Send this place**.



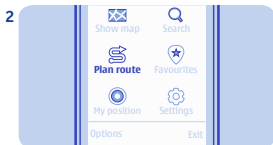
Create a walking route to a nearby place.



Write your message. The link to the location is added.

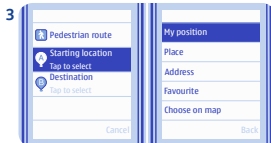


Select **Menu** > **Maps**.



Select **Plan route**.

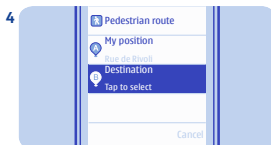
Send a photo using Bluetooth



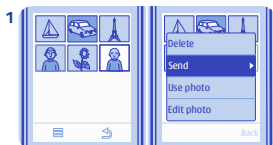
Select **Starting location** and the start point of your walking route.



Send a photo you have taken to your PC.



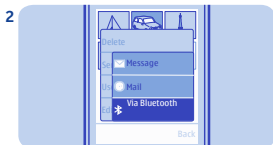
Select **Destination** and the end point of the walking route.



Select and hold the photo, then select **Send**.

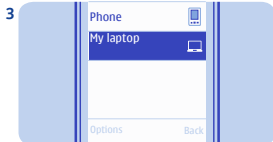


Select **Go > Start**.



Select **Via Bluetooth**.

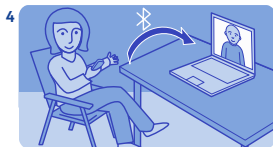
Copy between your phone and PC



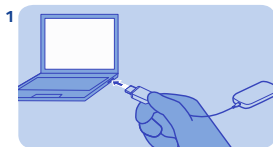
Select the device to connect to. If asked, type in the passcode. See 21.



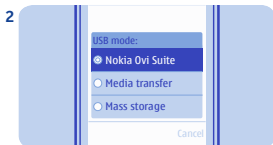
Copy content between your phone and a compatible computer.



The photo is sent to your PC.



Connect your phone to a computer with a compatible USB cable.

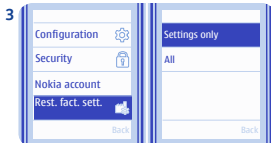


Select **Nokia Ovi Suite**, then copy the content.

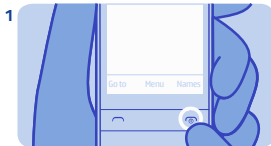
Restore original settings



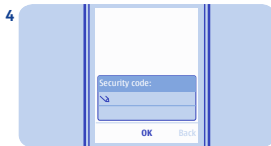
If your phone is not working properly, reset the settings.



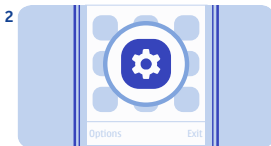
Select **Rest. fact. sett.** > **Settings only**.



End all calls and connections.




Type in the security code, then select **OK**.

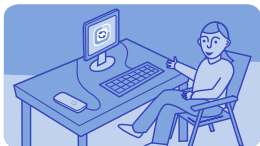


Select **Menu** > **Settings**.



Your phone switches off and on again. This may take longer than usual. See  23.

Update phone software using your PC



Update your phone software with the Nokia Suite PC app. You can also back up the photos and other stuff in your phone to your computer.

You need a compatible PC, a high-speed internet connection, and a compatible USB cable to connect your phone to the PC.

To get more info and to download the app, go to www.nokia.com/support.

See ➡ 22.

Update phone software using your phone



You can update your phone software wirelessly. You can also set your phone to automatically check for updates.

You can only update your software when using the SIM in the internal SIM holder.

Select **Menu > Settings and Device > Device updates**.

1. To check if there is an update, select **Current sw details**.
2. To download and install an update, select **Downl. device sw**, then follow the instructions shown on the phone.

The update may take several minutes. If you encounter problems, contact your network service provider.

Check for updates automatically

Select **Automatic SW update**, then set how often to check.

Back up content to a memory card

Your network service provider may send updates over the air directly to your phone. For more info on this network service, contact your network service provider.



Want to make sure you won't lose any important files? You can back up your phone memory to a compatible memory card.

Select **Menu > Settings > Sync & backup**.

1. Select **Create backup**.
2. Select what you want to back up, then select **Done**.

Restore a backup

Select **Restore backup**.

Access codes

<p>PIN or PIN2 code</p> <p>(4-8 digits)</p>	<p>These protect your SIM against unauthorised use or are required to access some features.</p> <p>You can set your phone to ask for the PIN code when you switch it on.</p> <p>If not supplied with your card or you forget the codes, contact your service provider.</p> <p>If you type in the code incorrectly three times in a row, you need to unblock the code with the PUK or PUK2 code.</p>
<p>PUK or PUK2 code</p> <p>(8 digits)</p>	<p>These are required to unblock a PIN or PIN2 code.</p> <p>If not supplied with your SIM, contact your service provider.</p>
<p>IMEI number</p> <p>(15 digits)</p>	<p>This is used to identify valid phones in the network. The number can also be used to block, for example, stolen phones. You may also need to give the number to Nokia Care services.</p> <p>To view your IMEI number, dial *#06#.</p>
<p>Lock code</p> <p>(security code)</p> <p>(min. 5 digits)</p>	<p>This helps you protect your phone against unauthorised use.</p> <p>You can set your phone to ask for the lock code that you define. The default lock code is 12345.</p> <p>Keep the code secret and in a safe place, separate from your phone.</p>

If you forget the code and your phone is locked, your phone will require service. Additional charges may apply, and all the personal data in your phone may be deleted.

For more information, contact Nokia Care or your phone dealer.

Support



When you want to learn more about how to use your phone, or if you're unsure how your phone should work, read the user guide thoroughly.

If you have an issue, do the following:

- Reboot your phone. Switch the phone off, then remove the battery. After about a minute, put the battery back in, then switch the phone on again.
- Update your phone software
- Restore the original factory settings

If your issue remains unsolved, contact Nokia for repair options. Go to www.nokia.com/repair. Before sending your phone for repair, always back up your data, as all personal data in your phone may be deleted.

Protect the environment

Save energy

You do not need to charge your battery so often if you do the following:

- Close applications and data connections, such as your Bluetooth connection, when not in use.
- Deactivate unnecessary sounds, such as touch screen and key tones.

Recycle



When this phone has reached the end of its working life, all of its materials can be recovered as materials and energy. To guarantee the correct disposal and reuse, Nokia co-operates with its partners through a program called We:recycle. For information on how to recycle your old Nokia products and where to find collection sites, go to www.nokia.com/werecycle, or call the Nokia Care contact centre.

Recycle packaging and user guides at your local recycling scheme.



The crossed-out wheeled-bin symbol on your product, battery, literature, or packaging reminds you that all electrical and electronic products, batteries, and accumulators must be taken to separate collection at the end of their working life. This requirement applies in the European Union. Do not dispose of these products as unsorted municipal waste. For more information on the environmental attributes of your phone, go to www.nokia.com/ecoprofile.

General information

Read these simple guidelines. Not following them may be dangerous or illegal. For further information, read the complete user guide.



SWITCH OFF IN RESTRICTED AREAS

Switch the device off when mobile phone use is not allowed or when it may cause interference or danger, for example, in aircraft, in hospitals or near medical equipment, fuel, chemicals, or blasting areas. Obey all instructions in restricted areas.



ROAD SAFETY COMES FIRST

Obey all local laws. Always keep your hands free to operate the vehicle while driving. Your first consideration while driving should be road safety.



INTERFERENCE

All wireless devices may be susceptible to interference, which could affect performance.



QUALIFIED SERVICE

Only qualified personnel may install or repair this product.



KEEP YOUR DEVICE DRY

Your device is not water-resistant. Keep it dry.



GLASS PARTS

The front cover of the device is made of glass. This glass can break if the device is dropped on a hard surface or receives a substantial impact. If the glass breaks, do not touch the glass parts of the

device or attempt to remove the broken glass from the device. Stop using the device until the glass is replaced by qualified service personnel.



PROTECT YOUR HEARING

Listen to a headset at a moderate level, and do not hold the device near your ear when the loudspeaker is in use.

Product and safety information

Feature-specific instructions

➡ 1 Use only compatible memory cards approved by Nokia for use with this device. Incompatible cards may damage the card and the device and corrupt data stored on the card.

➡ 2 **Important:** This device is designed to be used with a standard SIM card (see figure) only. Use of incompatible SIM cards may damage the card or the device, and may corrupt data stored on the card. Please consult your mobile operator for the use of a SIM card that has a mini-UICC cutout.



➡ 3 If you only have one SIM card, insert the card into the SIM1 card holder. Some features and services may only be available when using the SIM card in the SIM1 card holder. If there is a SIM card only in the SIM2


card holder, you can only make emergency calls.

➡ 4 Both SIM cards are available at the same time when the device is not being used, but while one SIM card is active, for example, making a call, the other is unavailable.


➡ 5 If the battery has not been used for a long time, to begin charging, you may need to connect the charger, then disconnect and reconnect it.

➡ 6 If the battery is completely discharged, it may take several minutes before the charging indicator is displayed or before any calls can be made.

➡ 7 Avoid touching the antenna area while the antenna is in use. Contact with antennas affects the communication quality and may reduce battery life due to higher power level during operation.

➡ 8  **Important:** Avoid scratching the touch screen. Never use an actual pen, pencil, or other sharp object on the touch screen.

➡ 9 To enter the + character, used for international calls, select * twice.

➡ 10  **Warning:** When the flight profile is activated, you cannot make or receive any calls, including emergency calls, or use other

features that require network coverage. To make a call, activate another profile.

➡ 11 Missed and received calls are logged only if supported by the network, and the phone is switched on and within the network service area.

➡ 12 You can only use speed dials for the contacts stored on your phone or on the SIM card in the internal SIM1 card holder.

➡ 13 Using services or downloading content may cause transfer of large amounts of data, which may result in data traffic costs.

➡ 14 You can send text messages that are longer than the character limit for a single message. Longer messages are sent as two or more messages. Your service provider may charge accordingly.

Characters with accents, other marks, or some language options, take more space, limiting the number of characters that can be sent in a single message.

➡ 15 If the item you insert in a multimedia message is too large for the network, the device may automatically reduce the size.

➡ 16 Only compatible devices can receive and display multimedia messages. Messages may look different in different devices.

➡ 17 Sending a message with an attachment may be more expensive than sending a normal text message. For more information, contact your service provider.

➡ 18 Only those features that are supported by the social networking service are available.

➡ 19 Using social networking services requires network support. This may involve the transmission of large amounts of data and related data traffic costs. For information about data transmission charges, contact your service provider.

➡ 20 The social networking services are third party services and not provided by Nokia. Check the privacy settings of the social networking service you are using as you may share information with a large group of people. The terms of use of the social networking service apply to sharing information on that service. Familiarise yourself with the terms of use and the privacy practices of that service.

➡ 21 Operating the device in hidden mode is a safer way to avoid malicious software. Do not accept Bluetooth connection requests from sources you do not trust. You can also deactivate Bluetooth function when you are not using it.

➡ 22 You can only use Nokia Suite with the SIM card in the internal SIM card holder.

➡ 23 Restoring settings does not affect documents or files stored on your phone.

Network services and costs

Your device is approved for use on the (E)GSM 900, 1800 MHz networks. To use the device, you need a subscription with a service provider.

Using network services and downloading content to your device requires a network connection and may result in data traffic costs. Some product features require support from the network, and you may need to subscribe to them.

Take care of your device

Handle your device, battery, charger and accessories with care. The following suggestions help you protect your warranty coverage.

- Keep the device dry. Precipitation, humidity, and all types of liquids or moisture can contain minerals that corrode electronic circuits. If your device gets wet, remove the battery, and allow the device to dry.
- Do not use or store the device in dusty or dirty areas. Moving parts and electronic components can be damaged.
- Do not store the device in high temperatures. High temperatures can shorten the life of the device, damage the battery, and warp or melt plastics.
- Do not store the device in cold temperatures. When the device warms to its normal temperature, moisture can form inside the device and damage electronic circuits.

- Do not attempt to open the device other than as instructed in the user guide.
- Unauthorised modifications may damage the device and violate regulations governing radio devices.
- Do not drop, knock, or shake the device. Rough handling can break internal circuit boards and mechanics.
- Only use a soft, clean, dry cloth to clean the surface of the device.
- Do not paint the device. Paint can clog moving parts and prevent proper operation.
- Switch off the device and remove the battery from time to time for optimum performance.
- Keep your device away from magnets or magnetic fields.
- To keep your important data safe, store it in at least two separate places, such as your device, memory card, or computer, or write down important information.

Recycle

Always return your used electronic products, batteries, and packaging materials to dedicated collection points. This way you help prevent uncontrolled waste disposal and promote the recycling of materials. Check how to recycle your Nokia products at www.nokia.com/recycling.

About Digital Rights Management

When using this device, obey all laws and respect local customs, privacy and legitimate rights of others, including copyrights. Copyright protection may prevent you from copying, modifying, or transferring pictures, music, and other content.

Content owners may use different types of digital rights management (DRM) technologies to protect their intellectual property, including copyrights. This device uses various types of DRM software to access DRM-protected content. With this device you can access content protected with WMDRM 10 and OMA DRM 1.0. If certain DRM software fails to protect the content, content owners may ask that such DRM software's ability to access new DRM-protected content be revoked. Revocation may also prevent renewal of such DRM-protected content already in your device. Revocation of such DRM software does not affect the use of content protected with other types of DRM or the use of non-DRM-protected content.

Digital rights management (DRM) protected content comes with an associated licence that defines your rights to use the content.

If your device has OMA DRM-protected content, to back up both the licences and the content, use the backup feature of Nokia Suite.

Other transfer methods may not transfer the licences which need to be restored with the content for you to be able to continue the use of OMA DRM-protected content after the device memory is formatted. You may also need to restore the licences if the files on your device become corrupted.

Batteries and chargers

Battery and charger information

Your device is intended for use with a BL-5C rechargeable battery. Nokia may make additional battery models available for this device. Always use original Nokia batteries.

This device is intended for use when supplied with power from the following chargers: AC-3. The exact Nokia charger model number may vary depending on the plug type, identified by E, X, AR, U, A, C, K, B, or N.

The battery can be charged and discharged hundreds of times, but it will eventually wear out. When the talk and standby times are noticeably shorter than normal, replace the battery.

Battery safety

Always switch the device off and disconnect the charger before removing the battery. When you unplug a charger or an accessory, hold and pull the plug, not the cord.

When your charger is not in use, unplug it from the electrical plug and the device. Do not leave a fully charged battery connected to a charger, as overcharging may shorten the battery's lifetime. If left unused, a fully charged battery will lose its charge over time.

Always keep the battery between 15°C and 25°C (59°F and 77°F). Extreme temperatures reduce the capacity and lifetime of the battery. A device with a hot or cold battery may not work temporarily.

Accidental short-circuiting can happen when a metallic object touches the metal strips on the battery, for example, if you carry a spare battery in your pocket. Short-circuiting may damage the battery or the connecting object.

Do not dispose of batteries in a fire as they may explode. Dispose of batteries according to local regulations. Recycle when possible. Do not dispose as household waste.

Do not dismantle, cut, open, crush, bend, puncture, or shred cells or batteries. If a battery leaks, do not let battery liquid touch skin or eyes. If this happens, immediately flush the affected areas with water, or seek medical help.

Do not modify, remanufacture, attempt to insert foreign objects into the battery, or immerse or expose it to water or other liquids. Batteries may explode if damaged.

Use the battery and charger for their intended purposes only. Improper use, or use of unapproved batteries or incompatible chargers may present a risk of fire, explosion, or other hazard, and may invalidate any approval or warranty. If you believe the battery or charger is damaged, take it to a service centre for inspection before continuing to use it. Never use a damaged battery or charger. Only use the charger indoors.


Additional safety information

Make an emergency call

1. Make sure the device is switched on.

2. Check for adequate signal strength. You may also need to do the following:

- Insert a SIM card.
 - Deactivate call restrictions you have activated for your device, such as call barring, fixed dialling, or closed user group.
 - Make sure the flight profile is not activated.
 - If the device screen and keys are locked, unlock them.
3. Press the end key repeatedly, until the home screen is displayed.
4. Enter the official emergency number for your present location. Emergency call numbers vary by location.
5. Press the call key.
6. Give the necessary information as accurately as possible. Do not end the call until given permission to do so.

 **Important:** Activate both cellular and internet calls, if your device supports internet calls. The device may attempt to make emergency calls both through cellular networks and through your internet call service provider. Connections in all conditions cannot be guaranteed. Never rely solely on any wireless device for essential communications like medical emergencies.

Small children

Your device and its accessories are not toys. They may contain small parts. Keep them out of the reach of small children.

Medical devices

Operation of radio transmitting equipment, including wireless phones, may interfere with

the function of inadequately protected medical devices. Consult a physician or the manufacturer of the medical device to determine whether they are adequately shielded from external radio frequency energy.


Implanted medical devices

Manufacturers of medical devices recommend a minimum separation of 15.3 centimetres (6 inches) between a wireless device and an implanted medical device, such as a pacemaker or implanted cardioverter defibrillator, to avoid potential interference with the medical device. Persons who have such devices should:

- Always keep the wireless device more than 15.3 centimetres (6 inches) from the medical device.
- Not carry the wireless device in a breast pocket.
- Hold the wireless device to the ear opposite the medical device.
- Turn the wireless device off if there is any reason to suspect that interference is taking place.
- Follow the manufacturer directions for the implanted medical device.


If you have any questions about using your wireless device with an implanted medical device, consult your health care provider.

Hearing

 **Warning:** When you use the headset, your ability to hear outside sounds may be affected. Do not use the headset where it can endanger your safety.

Some wireless devices may interfere with some hearing aids.

Nickel

 **Note:** The surface of this device does not contain nickel in the platings. The surface of this device contains stainless steel.

Protect your device from harmful content

Your device may be exposed to viruses and other harmful content. Take the following precautions:

- Be cautious when opening messages. They may contain malicious software or otherwise be harmful to your device or computer.
- Be cautious when accepting connectivity requests, browsing the internet, or downloading content. Do not accept Bluetooth connections from sources you do not trust.
- Only install and use services and software from sources that you trust and that offer adequate security and protection.
- Install antivirus and other security software on your device and any connected computer. Only use one antivirus application at a time. Using more may affect performance and operation of the device and/or computer.
- If you access preinstalled bookmarks and links to third party internet sites, take the appropriate precautions. Nokia does not endorse or assume liability for such sites.

Operating environment

This device meets radio frequency exposure guidelines in the normal use position at the

ear or at least 1.5 centimetres (5/8 inch) away from the body. Any carry case, belt clip, or holder for body-worn operation should not contain metal and should position the device the above-stated distance from your body.

To send data files or messages requires a quality connection to the network. Data files or messages may be delayed until such a connection is available. Follow the separation distance instructions until the transmission is completed.

Vehicles

Radio signals may affect improperly installed or inadequately shielded electronic systems in motor vehicles such as electronic fuel injection, electronic antilock braking, electronic speed control, and air bag systems. For more info, check with the manufacturer of your vehicle or its equipment.

Only qualified personnel should install the device in a vehicle. Faulty installation or service may be dangerous and may invalidate your warranty. Check regularly that all wireless device equipment in your vehicle is mounted and operating properly. Do not store or carry flammable liquids, gases, or explosive materials in the same compartment as the device, its parts, or accessories. Remember that air bags inflate with great force. Do not place your device or accessories in the air bag deployment area.

Potentially explosive environments

Switch off your device in any area with a potentially explosive atmosphere, for example near gas pumps at service stations. Sparks in such areas could cause an explosion or fire resulting in bodily injury or death. Observe restrictions in fuel service stations, storage, and distribution areas; chemical plants; or where blasting operations are in progress. Areas with a potentially explosive atmosphere are often, but not always, clearly marked. They include areas where you would be advised to turn off your vehicle engine, below deck on boats, chemical transfer or storage facilities and where the air contains chemicals or particles such as grain, dust, or metal powders. You should check with the manufacturers of vehicles using liquefied petroleum gas (such as propane or butane) to determine if this device can be safely used in their vicinity.

Certification information (SAR)

This mobile device meets guidelines for exposure to radio waves.

Your mobile device is a radio transmitter and receiver. It is designed not to exceed the limits for exposure to radio waves recommended by international guidelines. These guidelines were developed by the independent scientific organisation ICNIRP and include safety margins designed to assure the protection of all persons, regardless of age and health.

The exposure guidelines for mobile devices expose a unit of measurement known as the

Specific Absorption Rate or SAR. The SAR limit stated in the ICNIRP guidelines is 2.0 watts/kilogram (W/kg) averaged over 10 grams of tissue. Tests for SAR are conducted using standard operating positions with the device transmitting at its highest certified power level in all tested frequency bands. The actual SAR level of an operating device can be below the maximum value because the device is designed to use only the power required to reach the network. That amount changes depending on a number of factors such as how close you are to a network base station.

The highest SAR value under the ICNIRP guidelines for use of the device at the ear is 0.61 W/kg.

Use of device accessories may result in different SAR values. SAR values may vary depending on national reporting and testing requirements and the network band. Additional SAR information may be provided under product information at www.nokia.com.

DECLARATION OF CONFORMITY

CE 0434
CE 0168

Nokia is transitioning between EU Notified Bodies and this product has been approved as complying with EU regulations with both

Notified Bodies. Either of the CE marks shown may appear on the product during this transition period.

Hereby, NOKIA CORPORATION declares that this RM-702 product is in compliance with the essential requirements and other relevant provisions of Directive 1999/5/EC. A copy of the Declaration of Conformity can be found at <http://www.nokia.com/global/declaration>.

© 2011 Nokia. All rights reserved.

Nokia, Nokia Connecting People, Ovi, and WE: logo are trademarks or registered trademarks of Nokia Corporation. Nokia tune is a sound mark of Nokia Corporation. Other product and company names mentioned herein may be trademarks or tradenames of their respective owners.

Reproduction, transfer, distribution, or storage of part or all of the contents in this document in any form without the prior written permission of Nokia is prohibited. Nokia operates a policy of continuous development. Nokia reserves the right to make changes and improvements to any of the products described in this document without prior notice.



Includes RSA BSAFE cryptographic or security protocol software from RSA Security.



Java and all Java-based marks are trademarks or registered trademarks of Sun Microsystems, Inc.

Portions of the Nokia Maps software are ©1996-2012 The FreeType Project. All rights reserved.

The Bluetooth word mark and logos are owned by the Bluetooth SIG, Inc. and any use of such marks by Nokia is under license.

This product is licensed under the MPEG-4 Visual Patent Portfolio License (i) for personal and noncommercial use in connection with information which has been encoded in compliance with the MPEG-4 Visual Standard by a consumer engaged in a personal and noncommercial activity and (ii) for use in connection with MPEG-4 video provided by a licensed video provider. No license is granted or shall be implied for any other use. Additional information, including that related to promotional, internal, and commercial uses, may be obtained from MPEG LA, LLC. See <http://www.mpegla.com>.

To the maximum extent permitted by applicable law, under no circumstances shall Nokia or any of its licensors be responsible for any loss of data or income or any special,

incidental, consequential or indirect damages howsoever caused.

The contents of this document are provided "as is". Except as required by applicable law, no warranties of any kind, either express or implied, including, but not limited to, the implied warranties of merchantability and fitness for a particular purpose, are made in relation to the accuracy, reliability or contents of this document. Nokia reserves the right to revise this document or withdraw it at any time without prior notice.

The availability of products, features, applications and services may vary by region. For more information, contact your Nokia dealer or your service provider. This device may contain commodities, technology or software subject to export laws and regulations from the US and other countries. Diversion contrary to law is prohibited.

Nokia does not provide a warranty for or take any responsibility for the functionality, content, or end-user support of third-party applications provided with your device. By using an application, you acknowledge that the application is provided as is. Nokia does not make any representations, provide a warranty, or take any responsibility for the functionality, content, or end-user support of third-party applications provided with your device.

The availability of Nokia services may vary by region.

Some operations and features are SIM card and/or network dependent, MMS dependent, or dependent on the compatibility of devices and the content formats supported. Some services are subject to a separate charge.